

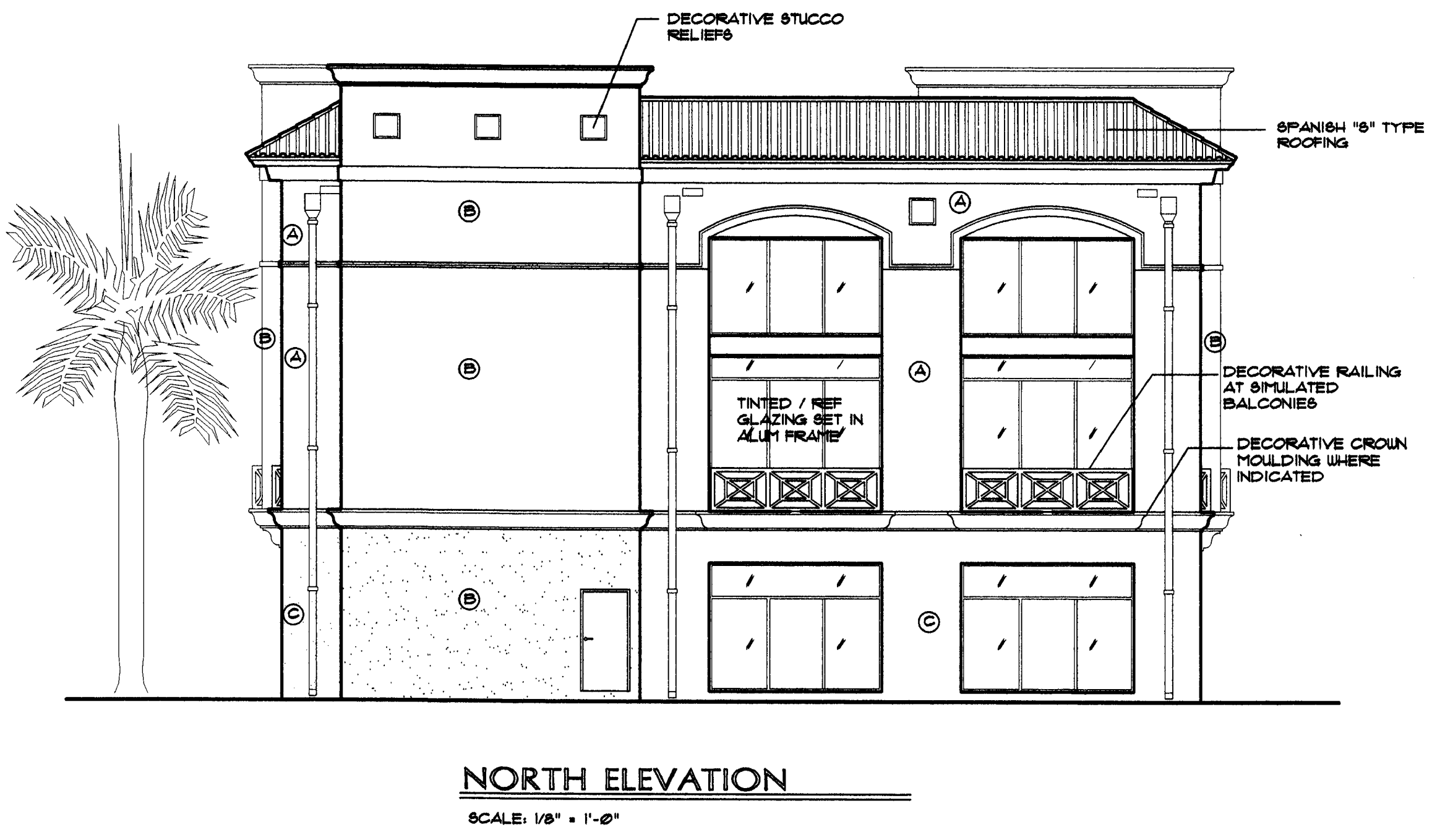
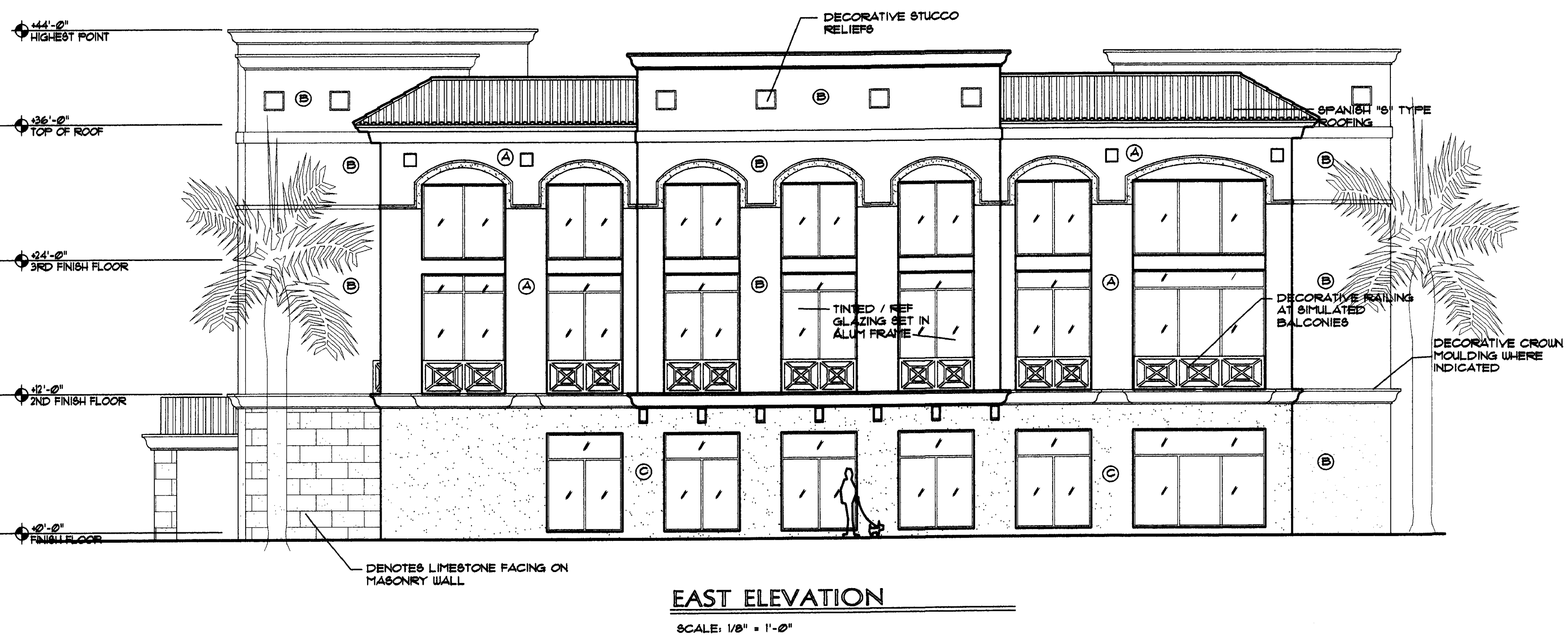
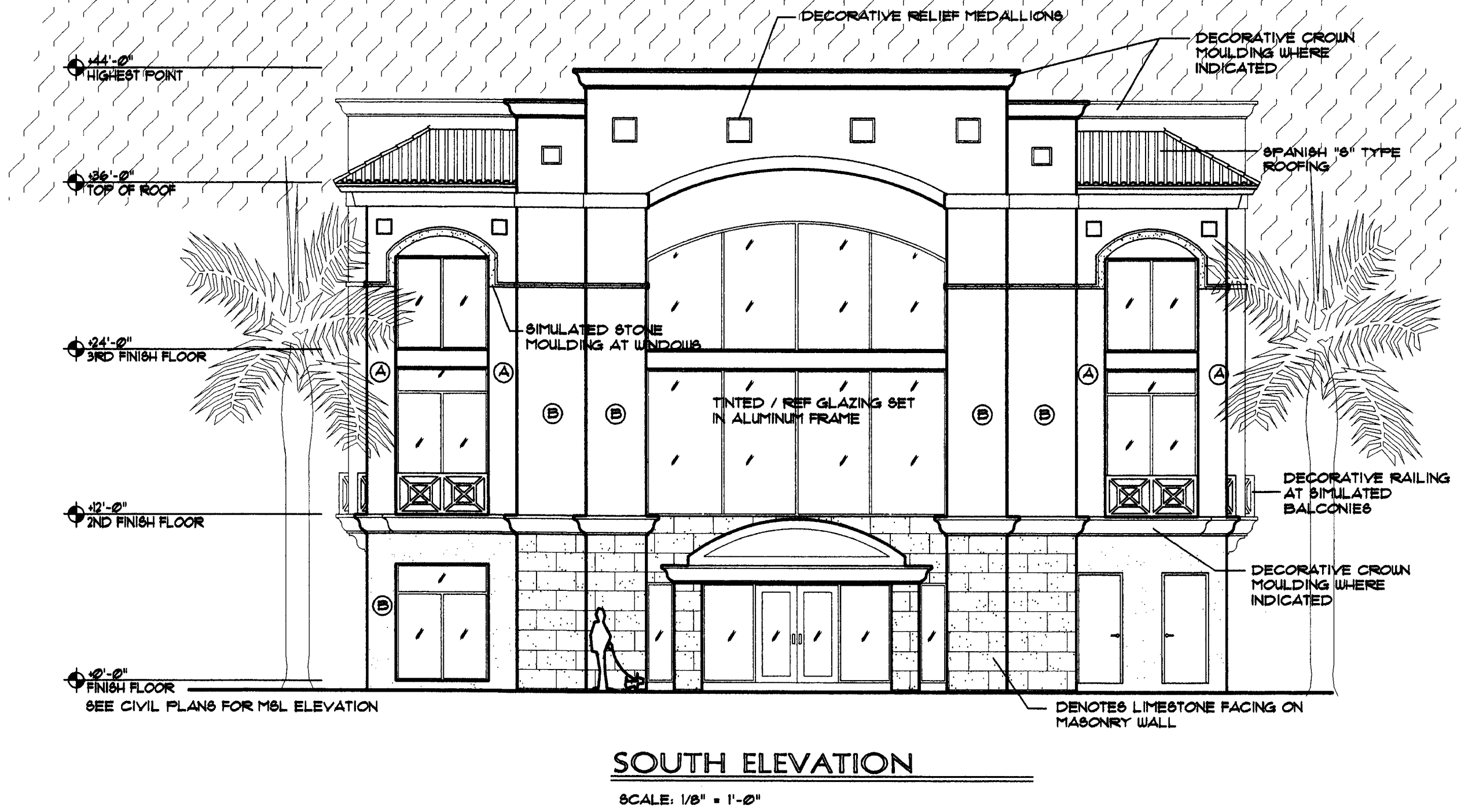
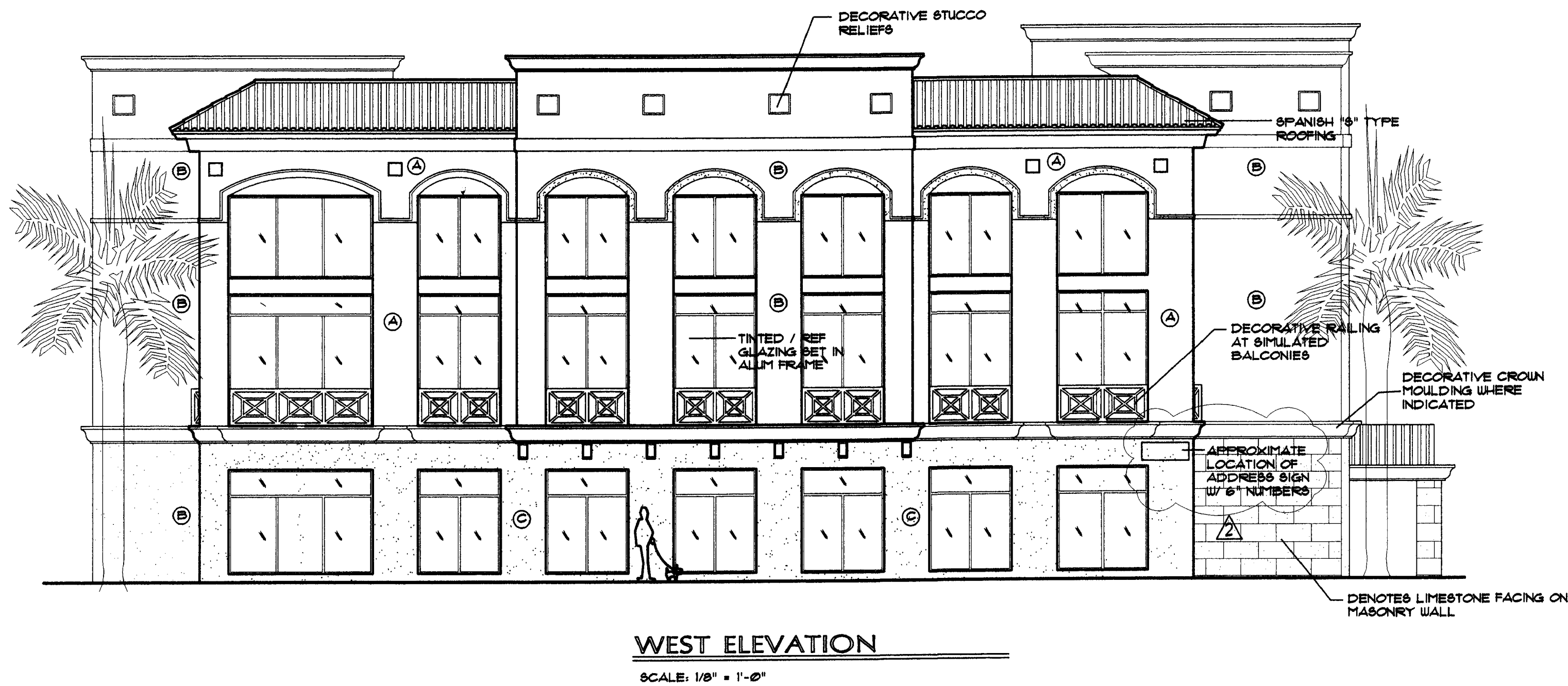
REVISIONS	
11/18/2005	DRG COMMENTS
1/22/2006	CITY COMMENTS

PÉREZ ASSOCIATES
ARCHITECTURE & PLANNING

2631 E. OAKLAND PARK BLVD.
SUITE 201
FORT LAUDERDALE, FL 33306
TELEPHONE (954) 567-2062
FAX (954) 567-2063

JUN 08 2006

Reg. No. A252000651
FRANCISCO J. PEREZ
ARCHITECT

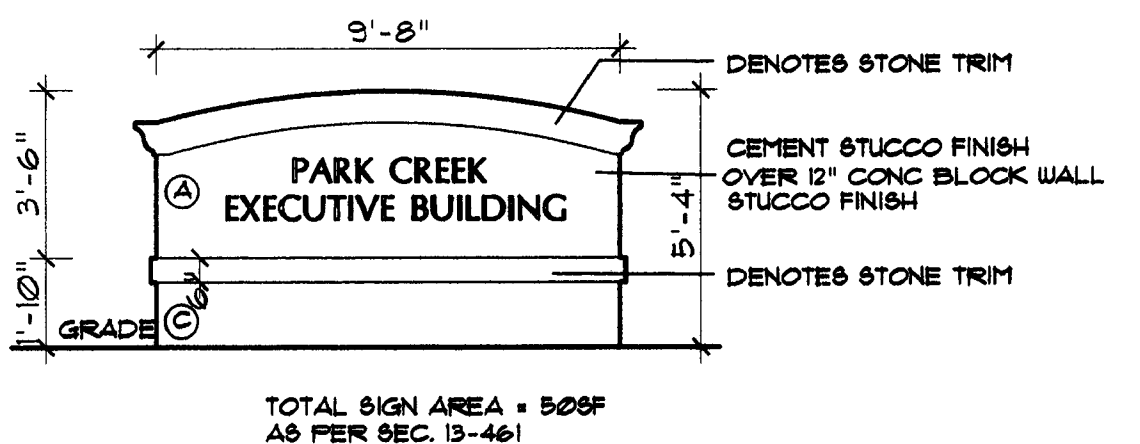


△ COLOR/FINISH SCHEDULE

COLOR NUMBERS RELATE TO SHERWIN WILLIAMS PAINTS

MARK	COLOR	COMMON COLORS △
△	8 W 6312 INVITING IVORY	PALE YELLOW OCHRE
Ⓐ	8U 6313 HARVESTER	MEDIUM YELLOW OCHRE
Ⓑ	8U 6314 TORCHLIGHT	YELLOW OCHRE
Ⓒ	LIMESTONE	NATURAL STONE
	ROOFING	TERRA COTTA BLEND (REDDISH)
	ALUMINUM STOREFRONT	WHITE
	ALUMINUM RAILINGS	WHITE
	STUCCO BANDS	WHITE

△ ROOF EQUIPMENT NOTE
ANY ROOF MOUNTED EQUIPMENT SHALL BE SCREENED FROM VIEW FROM ABUTTING PUBLIC ROAD RIGHTS OF WAY.



△ GROUND SIGN ELEVATION
SIGN IS DOUBLE SIDED

TOTAL SIGN AREA = 500 SF
AS PER SEC. 13-461

PRELIMINARY ELEVATIONS

PROPOSED OFFICE BUILDING for
M & S REAL ESTATE DEVELOPMENT CO., LLC
U. S. 441 (NORTH STATE ROAD 7)
COCONUT CREEK, FLORIDA

DATE	8/11/2005
SCALE	
JOB NO.	2005 22
FILES	ELEV 8-11
SHEET NO.	A 1

3/21/06 165541474
C:\WORKING\DESKTOP\New Plus\MS ELEV 8-11.dwg Tue Jan 24 22:40:41 2006