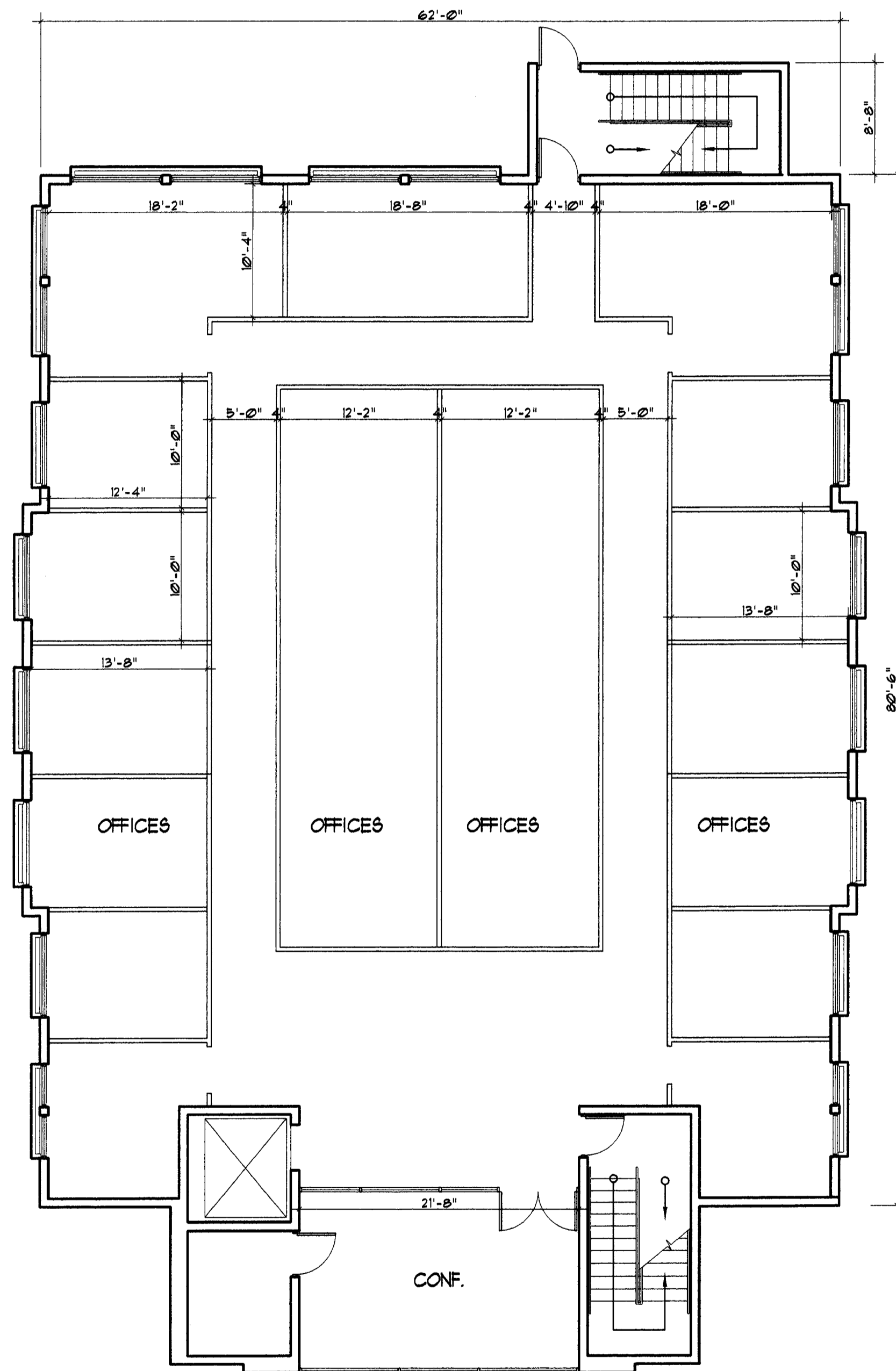
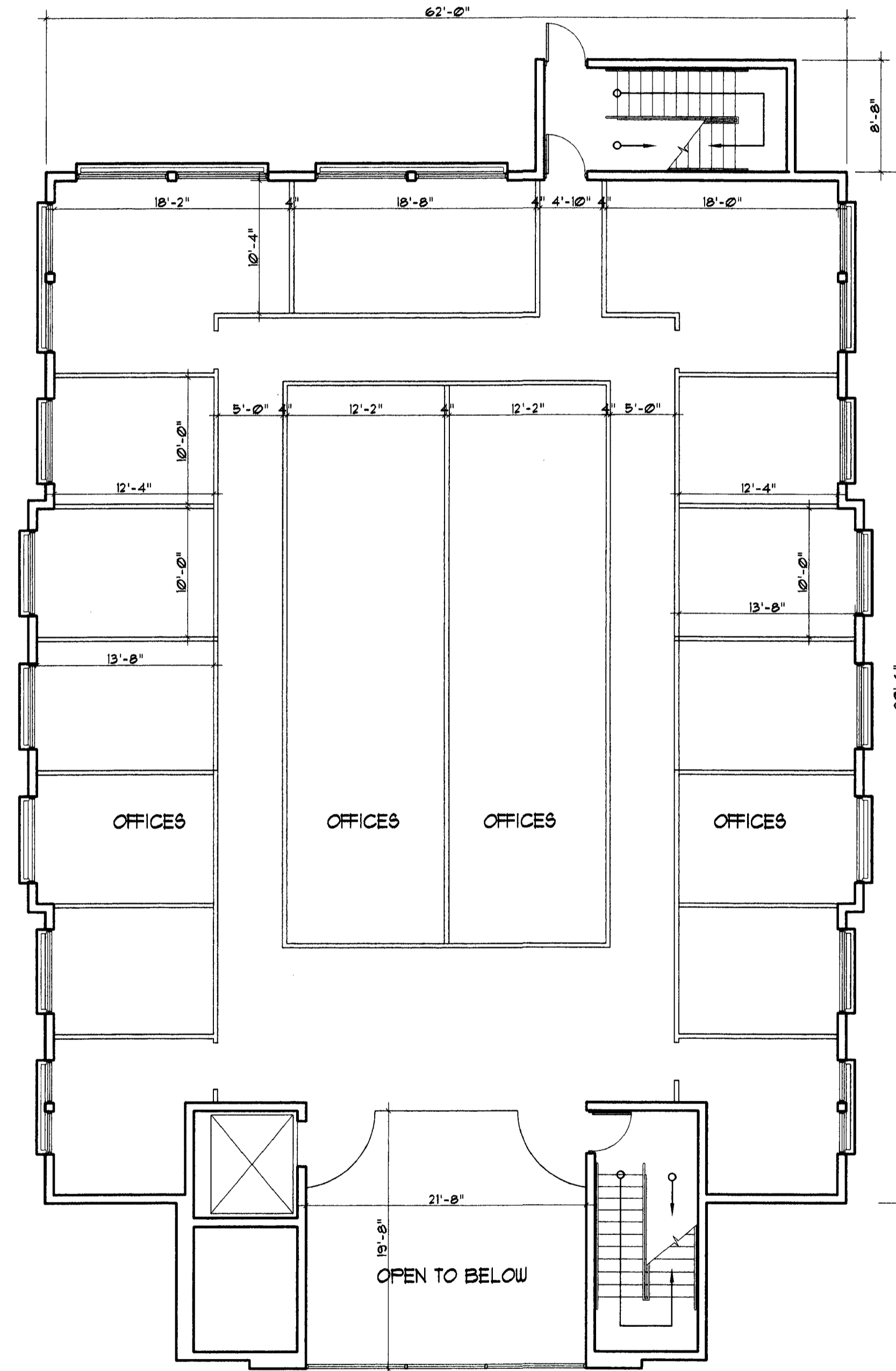


BUILDING AREAS:  $\Delta$

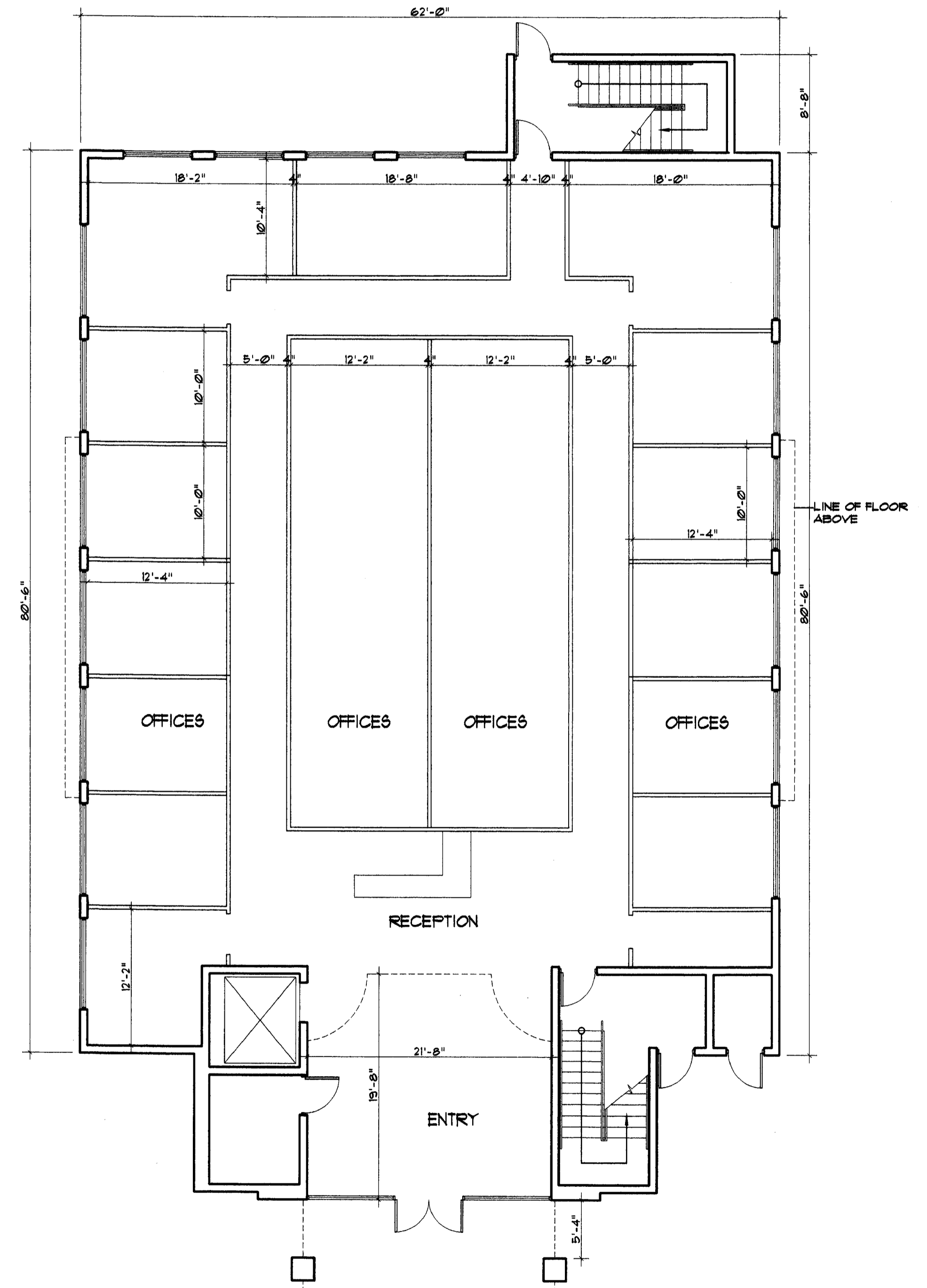
	GROSS AREA:	LEASEABLE AREA:
GROUND FLOOR	5,354 SF	4,943 SF
SECOND FLOOR	4,952 SF	4,541 SF
THIRD FLOOR	5,354 SF	4,358 SF
TOTAL	15,660 SF	13,842 SF



THIRD FLOOR



SECOND FLOOR



GROUND FLOOR

PRELIMINARY FLOORPLANS

REVISIONS
1/18/2005 DRC COMMENTS



2631 E. OAKLAND PARK BLVD.  
SUITE 201  
FORT LAUDERDALE, FL 33306  
TELEPHONE (954) 567-2062  
FAX (954) 567-2063

JUN 08 2006

Reg. No. A428000661  
FRANCISCO J. PEREZ  
ARCHITECT

PROPOSED OFFICE BUILDING for  
M & S REAL ESTATE DEVELOPMENT CO., LLC  
U. S. 441 (NORTH STATE ROAD 7)  
FLORIDA  
COCONUT CREEK

DATE	8/11/2005
SCALE	
JOB NO.	2005 22
FILES	MS FP 8-11
SHEET NO.	A 2