

NOTE:

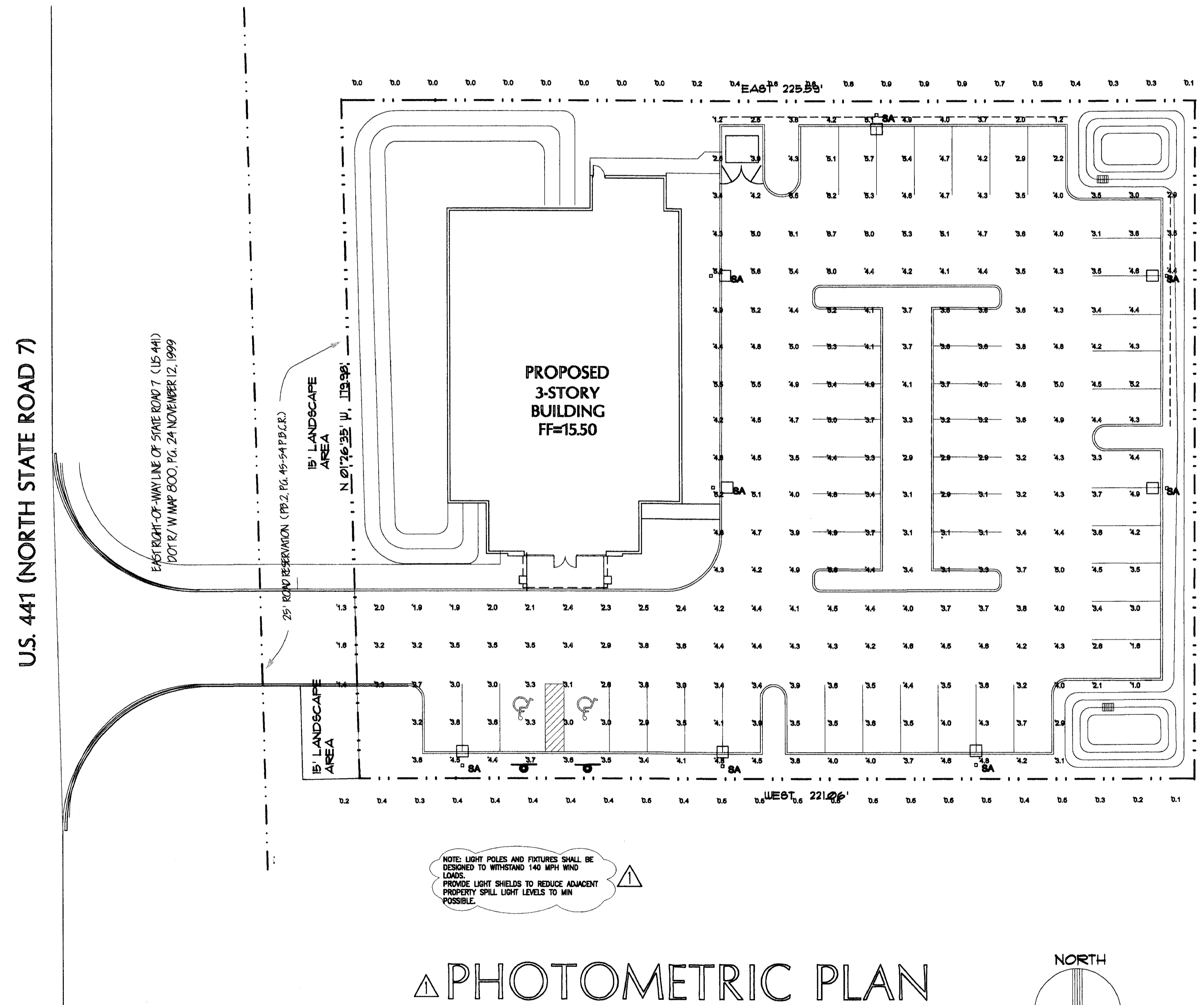
THE EXTERIOR LIGHTING WAS DESIGNED SPECIFYING THE LIGHTING MANUFACTURER. ANY DEVIATION FROM THE DESIGN WILL REQUIRE PLAN REVISIONS, RE-SUBMITTAL OF THE PLAN REVISIONS TO THE PERMITTING AGENCIES, AND POSSIBLE TIME DELAYS. THE CONTRACTOR SHALL INCLUDE ALL COSTS ASSOCIATED WITH ANY DEVIATIONS FOR THE DESIGN IN THE INITIAL PRICING.

THE SPECIFIED MANUFACTURER'S REPRESENTATIVE SHALL BE RESPONSIBLE TO COORDINATE THE INSTALLATION TO INSURE THAT THE SITE LIGHTING REQUIREMENTS ARE MET. PROVIDE ADDITIONAL HOUSE SIDE SHIELDS, LIGHTS, POLES, ADJUSTMENTS, ETC. AS REQUIRED TO MEET THESE REQUIREMENTS.

PROVIDE A SIGNED LETTER, FROM THE MANUFACTURER'S REPRESENTATIVE TO THE ENGINEER, AFTER THE INSTALLATION IS COMPLETE AND INSPECTED, THAT THE SITE LIGHTING IS IN COMPLIANCE WITH THE REQUIREMENTS AND MEETS ALL LOCAL PHOTOMETRIC CODES.

LUMINAIRE SCHEDULE						
Symbol	Label	Qty	Catalog Number	File	Lumens	LLF
□	BA	8	LITHONIA LIGHTING AB2 400M BR48C TB RFRASQWA COLOR (MOUNTED @ 25 FT AFD)	LH10100.lvs	40000	0.70

STATISTICS					
Description	Avg	Max	Min	Max/Min	Avg/Min
Parking Lot	3.9 fc	6.7 fc	1.0 fc	6.7:1	3.9:1
Spill Light at Property Line	0.3 fc	0.9 fc	0.0 fc	N/A	N/A



REVISIONS	
11/15/2005	DRC COMMENTS

Perez Associates
ARCHITECTURE & PLANNING

2631 E. OAKLAND PK. BLVD.
SUITE 201
FORT LAUDERDALE, FL 33308
TELEPHONE 954 567-2062
FAX 954 567-2063
E-mail: PerezArch@aol.com

Reg. No. AA26000661
FRANCISCO J. PEREZ
ARCHITECT

PROPOSED OFFICE BUILDING for
M & S REAL ESTATE DEVELOPMENT CO., LLC
U. S. 441 (NORTH STATE ROAD 7)
COCONUT CREEK, FLORIDA

DATE	8/18/2005
SCALE	
JOB NO.	2005 22
FILE #	PHOTO
SHEET NO.	PHM -1