

GENERAL NOTE: ALL
TENANT SIGNS TO COMPLY
WITH APPROVED SIGNAGE
PLAN.

APR 01 2008

Egis J. Korba Victor K. Yue
AR 0015112 AR 0013082

Issue: SITE PLAN Submittal 03-28-2006
Date: 03-28-2006
DRC Comments #1 04-27-2006
DRC Comments #2 07-06-2006
Rev. #3 Tree & Plant 07-19-2006
Rev. #4 Final Engr. 12-15-2006
Rev. #5 Final Site App. 01-29-2007
Rev. #6 Admin. App. 06-25-2007
Rev. #7 Admin. App. 08-16-2007
Rev. #8 Admin. App. 12-04-2007
Bldg 1, Bank Bldg G, PG3
Rev. #9 Revised Admin. 03-07-2008
Approval Resubmission
Rev. #10 Revised Admin. 04-01-2008
Approval per Comments



**DORSKY
HODGSON
PARRISH
YUE**

AA 26001261

Architecture
Planning
Interiors
Environmental
Graphics

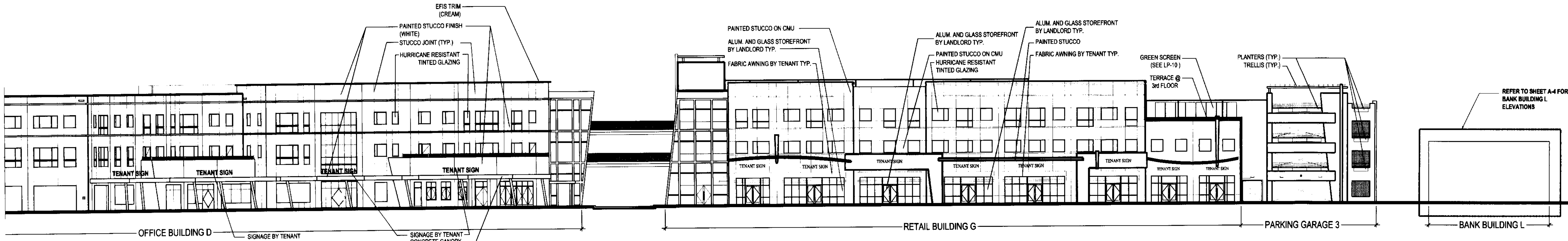
Cleveland
Fort Lauderdale
Washington DC

Ft. Lauderdale, Florida 33394
Phone (954) 524-8686
Fax (954) 524-8604

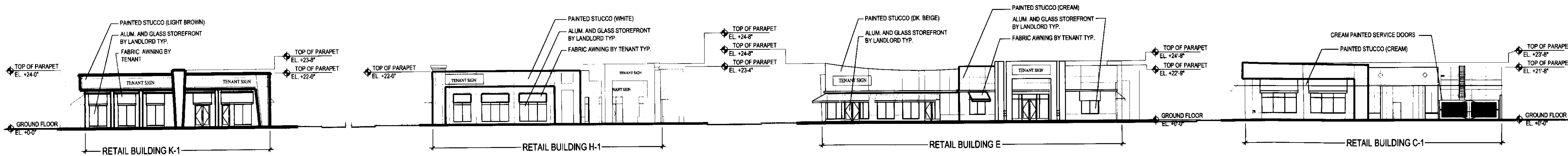
ELEVATIONS
APPLICANT: **COCONUT CREEK DEVELOPMENT LLC**
Job No.: 2005113
Drawn: S.A.
Checked: V.S.
Date: 03-29-06

SOUTH WEST CORNER OF LYONS ROAD AND WILES ROAD, COCONUT CREEK, FLORIDA

ALL RIGHTS RESERVED



9 SOUTH ELEVATION
BUILDING D, G, L
1" = 20'



12 WEST ELEVATION
BUILDING K1, H1, E, C1
1" = 20'

