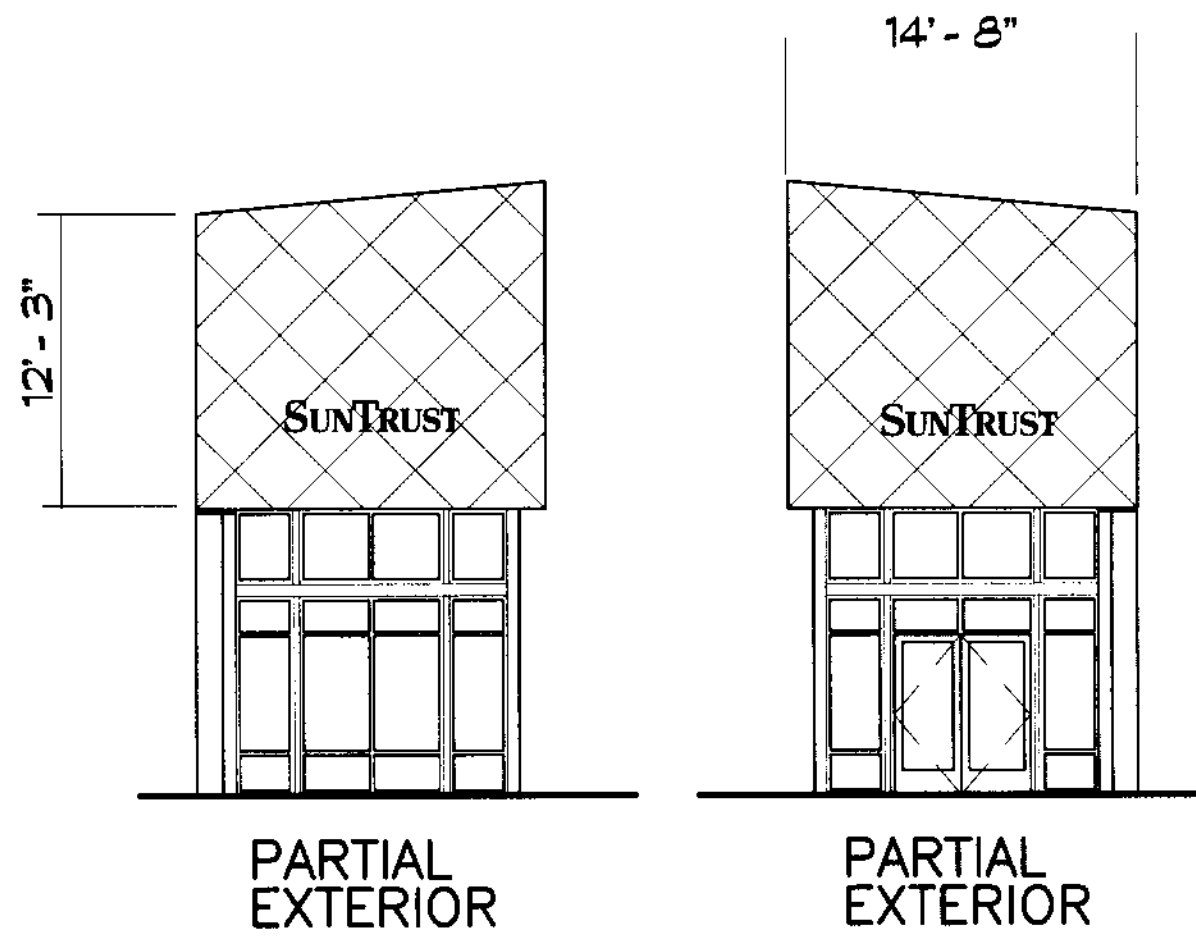


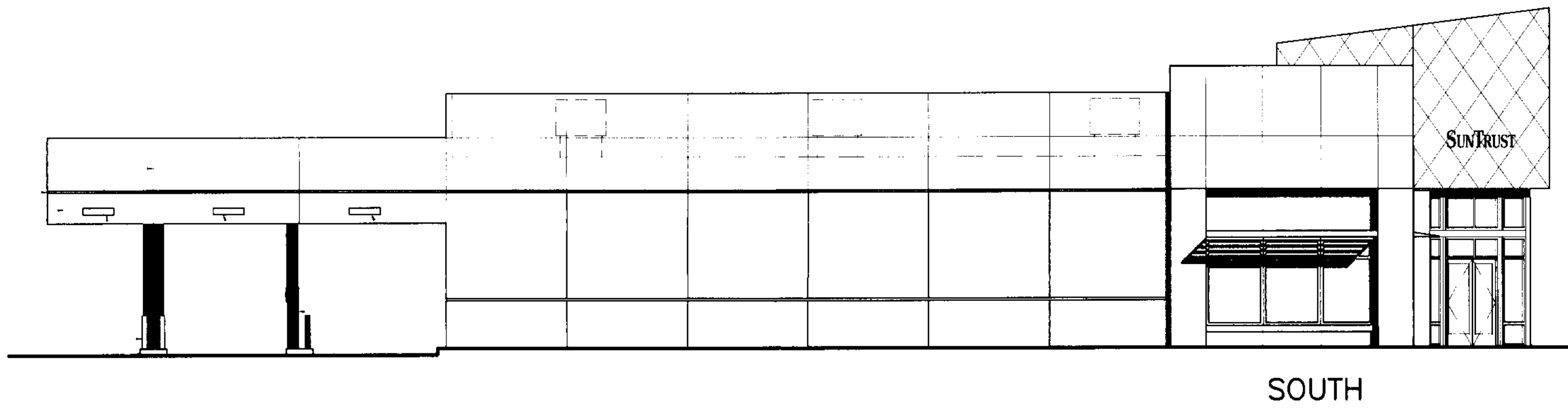
EAST



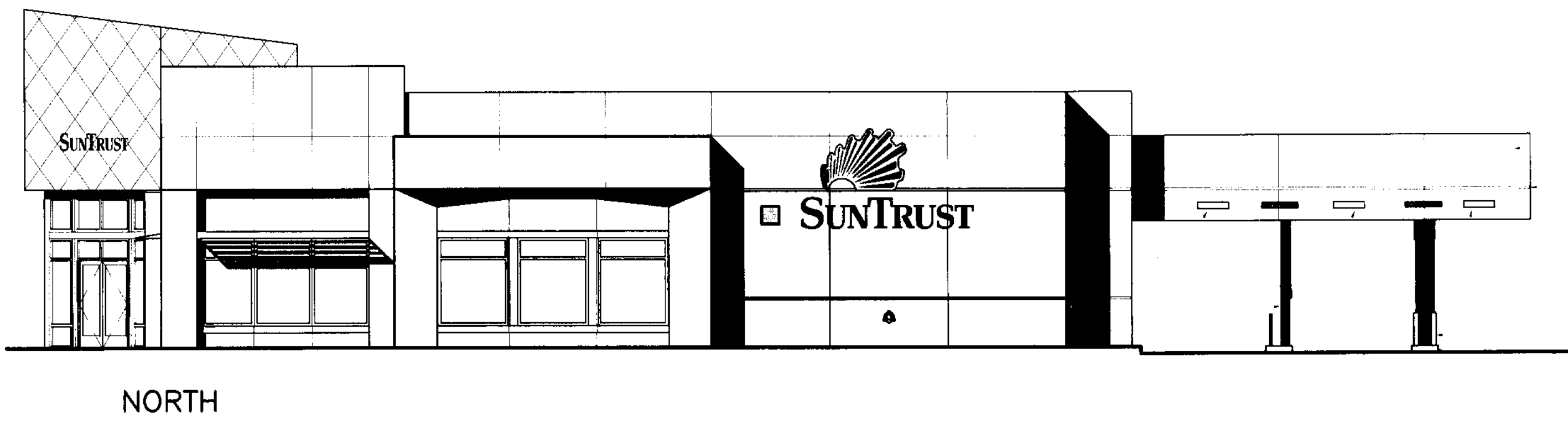
PARTIAL
EXTERIOR

PARTIAL
EXTERIOR

Two sets of LIS-25-B as
seen from various elevations
See sheet 3 for more details

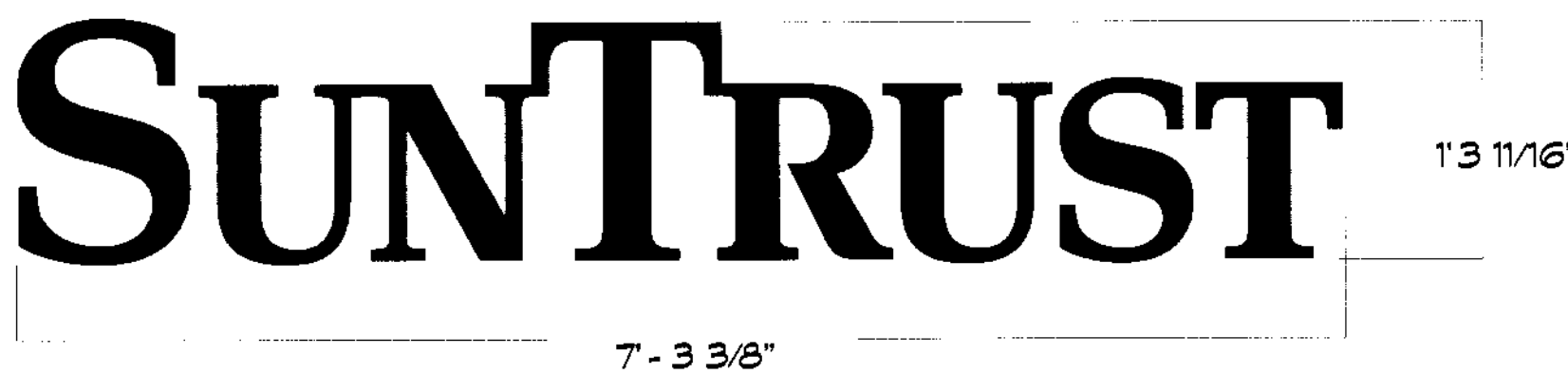


SOUTH



NORTH

ELEV
1 ELEVATIONS
SCALE 1/8" = 1'-0"

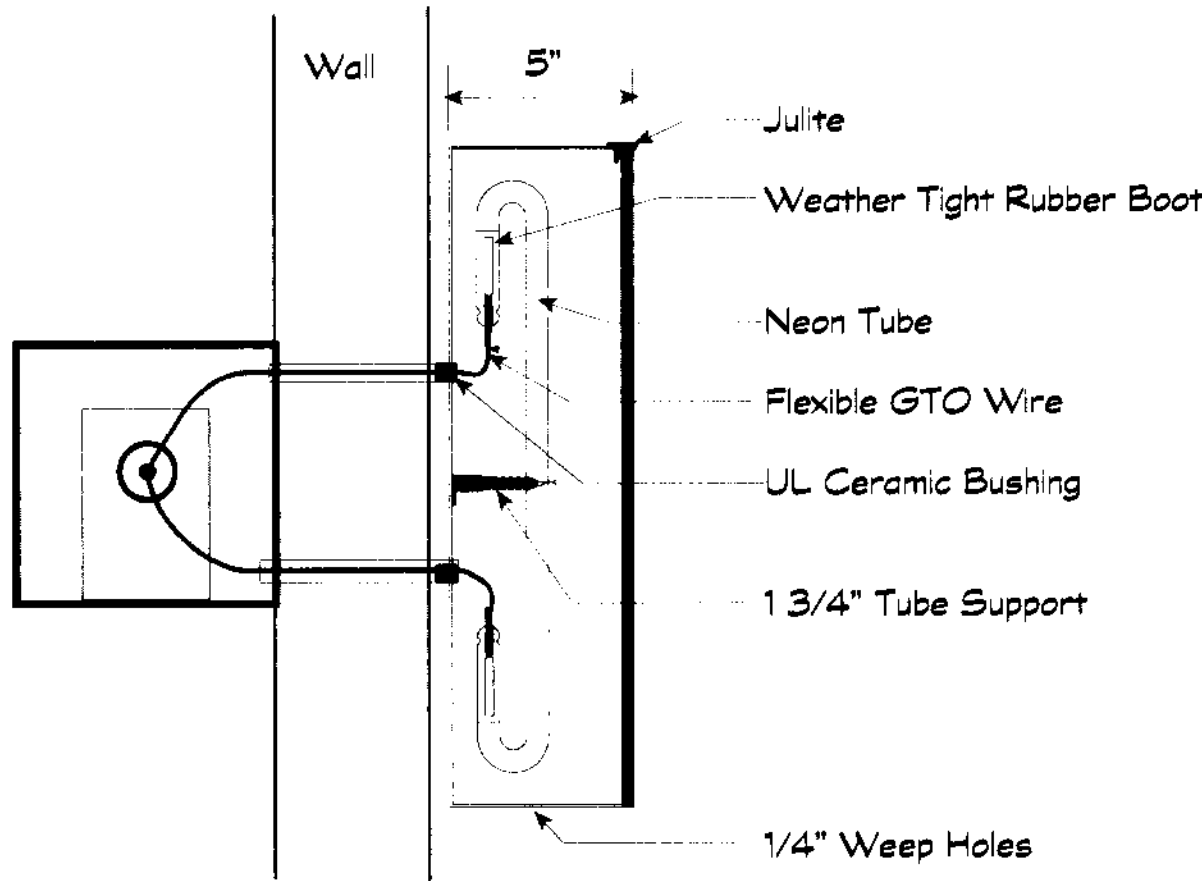


LIS-15-B SunTrust Channel Letters SunBurst
is one piece with push through graphics back-
ground and returns are painted SunTrust silver.
SunTrust is channel letters with blue perforated
vinyl face that illuminates white at night with
silver julite and silver returns


NOTE:

1. The Logo and Channel letters on the side
of the building shall be 30" max. in height.

ELEV
1 ELEVATION LIS-15-B-SO CHANNEL LETTERS
SCALE 1" = 1'-0"



SECTION CHANNEL LETTERS
REMOTE TRANSFORMERS
SCALE NTS

 1876 Delcor Avenue Hwy 5 Atlanta GA 30318 VOICE (404) 531-7553 FAX (404) 531-4323 MARKIII.F01	JOB NAME: SunTrust Coconut Creek	DESIGNER: JMC	DATE: 11/11/07	REVISIONS: <div><div></div></div>	CUSTOMER APPROVAL: SIGNATURE NAME	DRAWING 2 of 2
	PROJECT ADDRESS:	CUSTOMER REP: Ron Wright	FILE NAME: STPromenadeFL1.ai			