



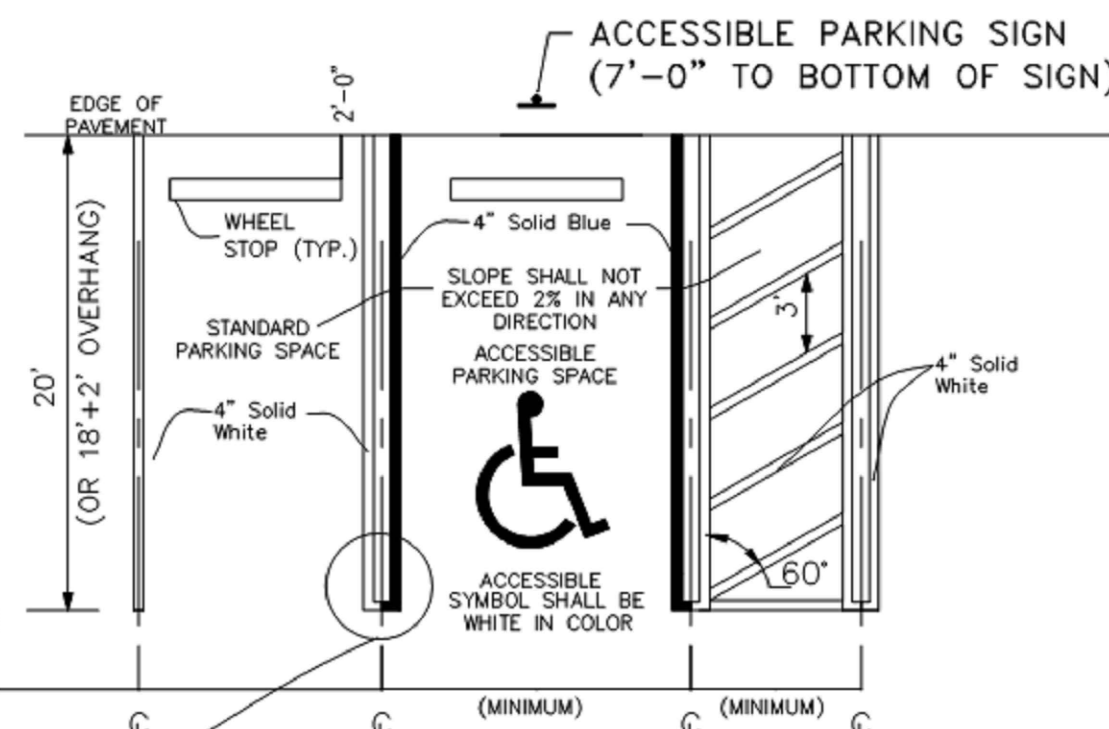
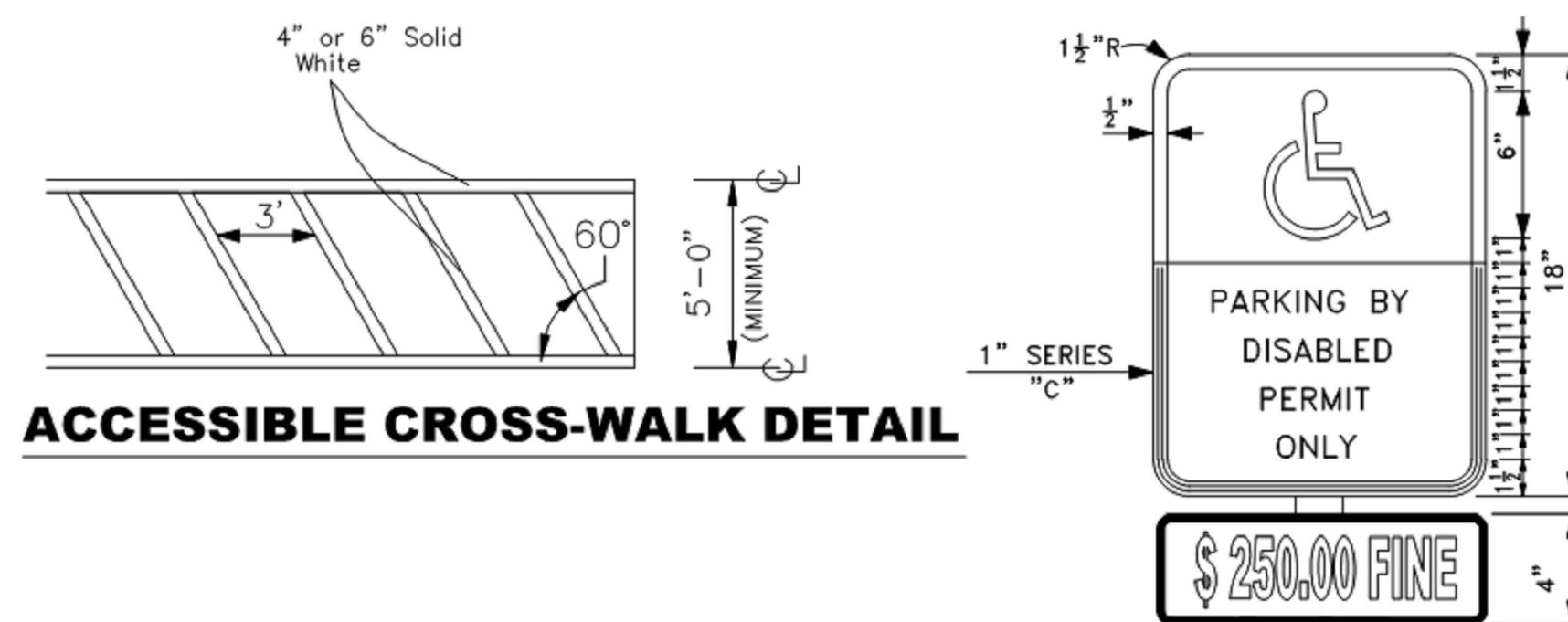
- ## HANDICAP SIGN

F.D.O.T. INDEX NO. 17355

INSTALL SIGN IN FRONT OF HANDICAP SPACE



- NOTES:**
1. ACCESSIBLE PARKING SPACES SHALL COMPLY WITH THE FLORIDA BUILDING CODE, ADAAG, AND CITY OF COCONUT CREEK ORDINANCES.

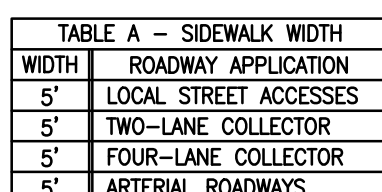


ACCESSIBLE PARKING DETAIL

			UTILITIES AND ENGINEERING DEPARTMENT			
			HANDICAP PARKING DETAILS			
Date	Revisions	Appr. by	Date: April 2006	Scale: N.T.S.	Dwg: F320	Fig: 320



PAVEMENT MARKINGS



SIDEWALK JOINTS	
TYPE	LOCATION
"A"	P.C. P.T. OF CURVES
"B"	5'-0" CENTER TO CENTER ON SIDEWALKS

SECTION

- NOTES:**
1. CONCRETE TO BE TYPE I 2500 P.S.I.
 2. USE OF REINFORCED CEMENT IS PROHIBITED
 3. 4" THK. MIN. (TYP.); 6" THK. AT DRIVEWAYS, EXTENDED TWO-FEET BEYOND DRIVE, ON BOTH SIDES.
 4. SIDEWALK SLOPES SHALL MEET THE REQUIREMENTS OF THE AMERICAN WITH DISABILITIES ACT.
 5. CONSTRUCT EXPANSION JOINTS AT SPACINGS SHOWN ABOVE; AT POINT OF CURVATURE; AT ADJOINING STRUCTURES; AND, AT THE END OF DAYS WORK.

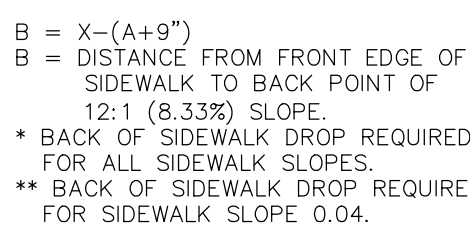
CITY OF COCONUT CREEK
UTILITIES AND ENGINEERING DEPARTMENT

TYPICAL SIDEWALK DETAILS

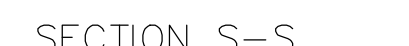


1. CONCRETE CYLINDER TESTS SHALL BE REQUIRED AT A MINIMUM OF ONE PER 50 CU. YDS. OR LESS, AND PERFORMED BY AN APPROVED INDEPENDENT LABORATORY AT THE CONTRACTOR'S EXPENSE.
2. CURB SHALL BE POURED MONOLITHICALLY AND CONSTRUCTED IN ACCORDANCE WITH THIS DETAIL.
3. CONTROL JOINTS SHALL BE TOOLED OR CUT EVERY TEN (10) FEET.
4. ALL AREAS BEHIND CURBS SHALL BE BACKFILLED WITHIN 72 HOURS OF PLACEMENT.

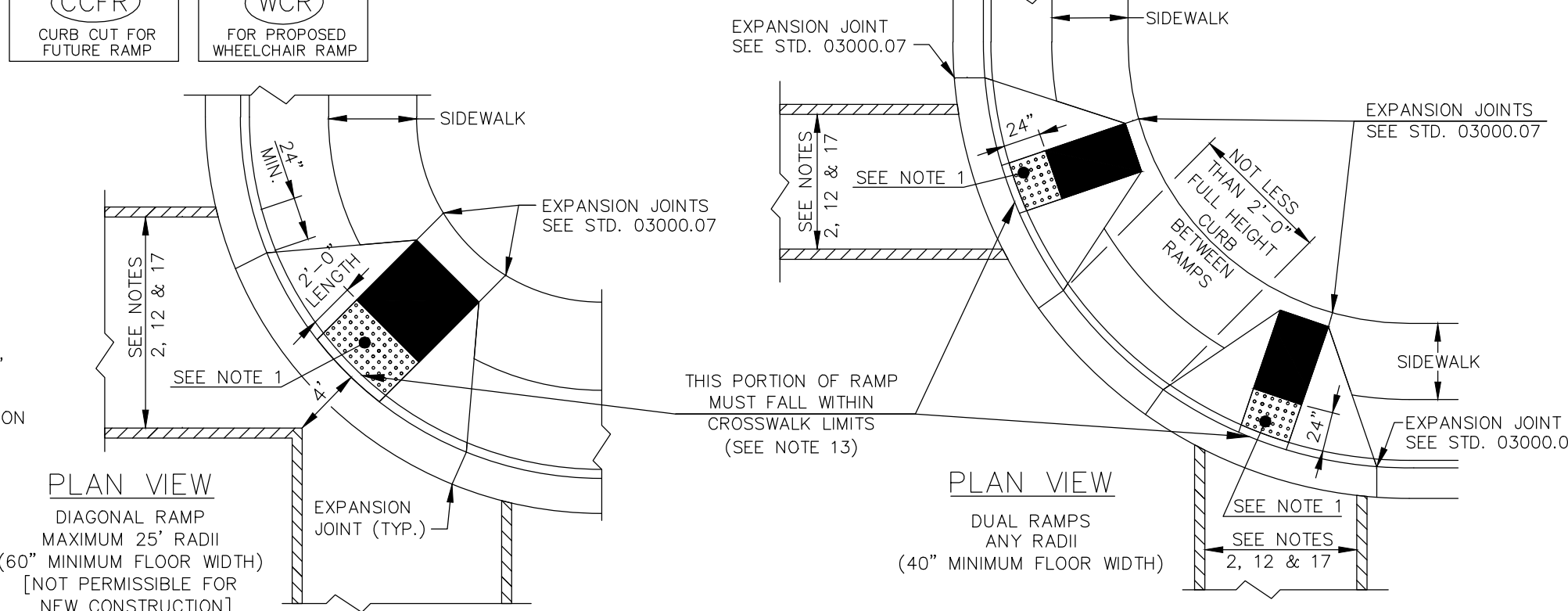
CITY OF COCONUT CREEK UTILITIES AND ENGINEERING DEPARTMENT			
TYPE "D" CURB			
Date: April 2006	Scale: N.T.S.	Dwg: F357	Fig: 357



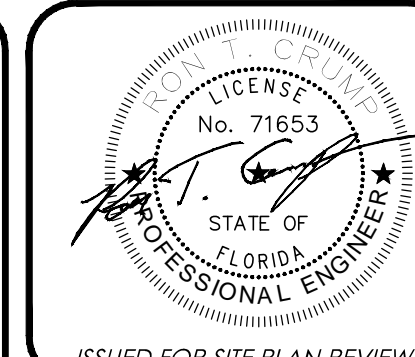
ALTERNATE MATERIAL MAY BE SUBSTITUTED, PROVIDED THE PRODUCT IS ON THE TOWN'S APPROVED MANUFACTURER LIST AND THE MANUFACTURER'S PRODUCT AND INSTALLATION SPECIFICATIONS ARE FOLLOWED.



NOTE: A PORTION OF ONE OR BOTH RAMPS
MAY EXTEND OUTSIDE THE RETURN.



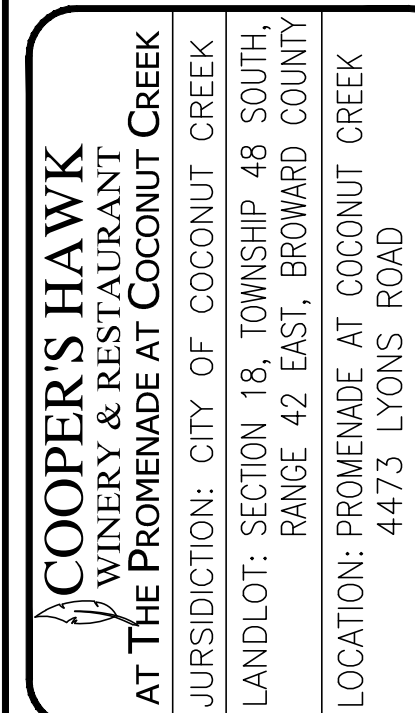
STANDARD ADA RAMP



ISSUED FOR SITE PLAN REVIEW

[illegible]

These drawings and the design represented herein are the exclusive property of The Contineo Group. Reproduction or any use of these drawings other than for the project intended without the express written consent of The Contineo Group is prohibited.



SITE DETAILS

JOB NO: 15-187	SHEET C7.0
DATE: 02/16/16	PLAN REVIEW