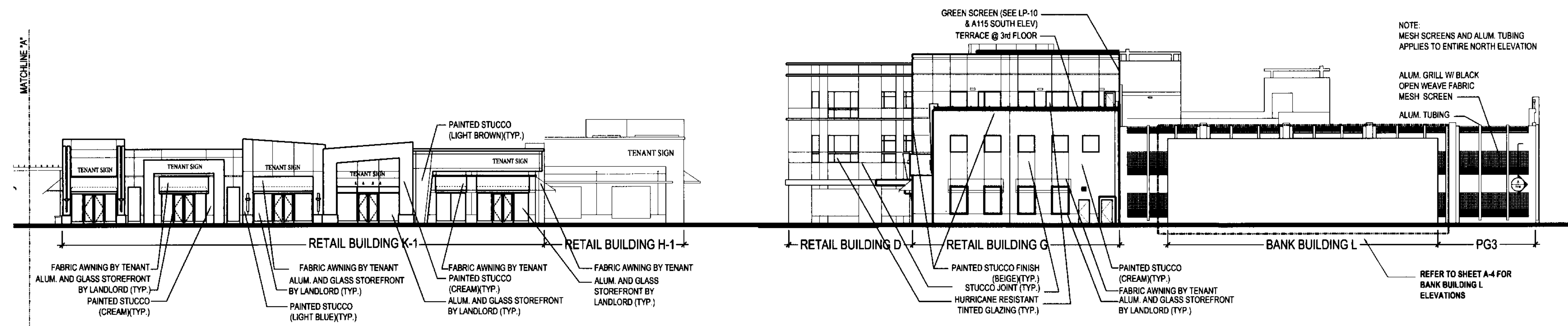
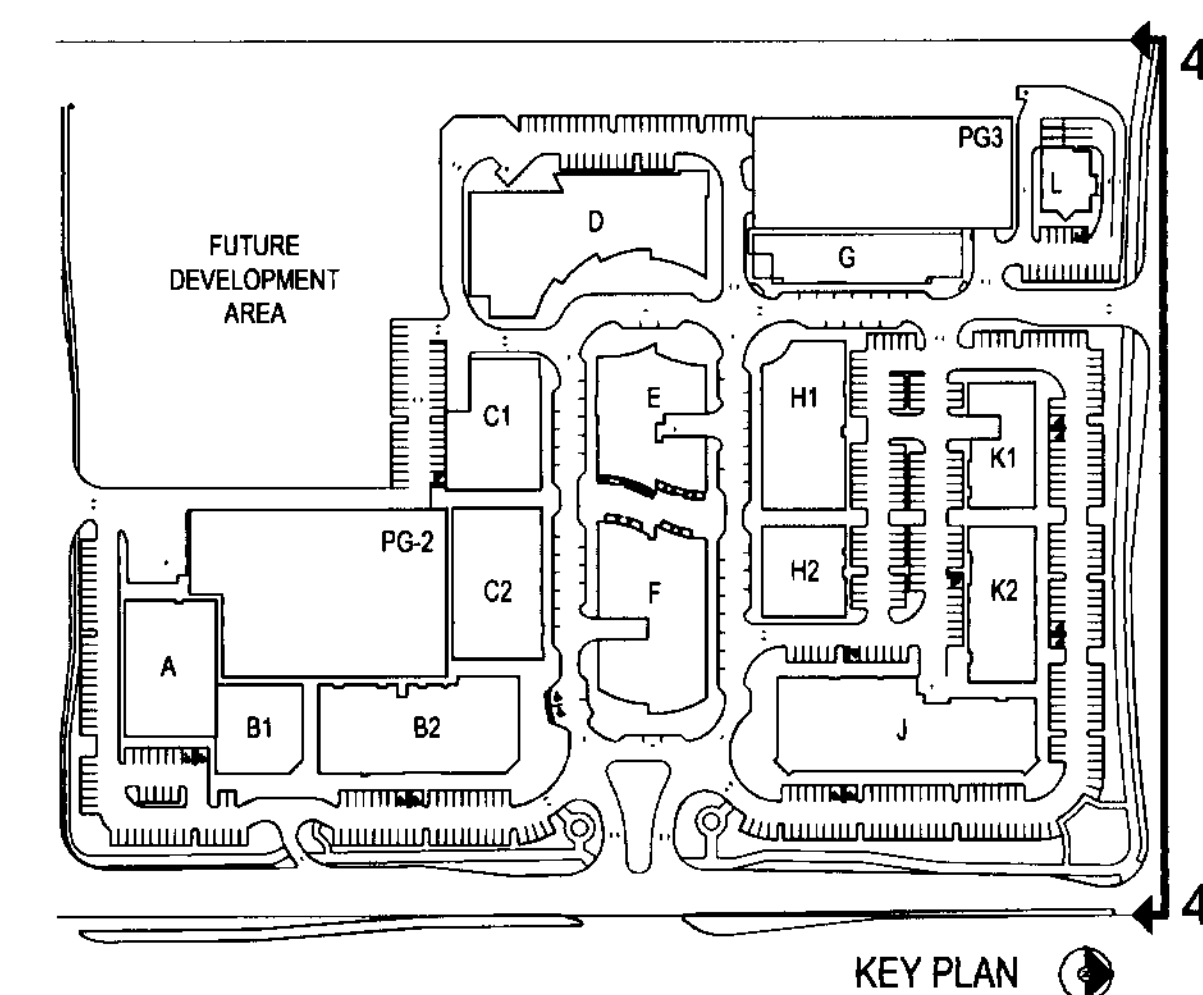


4  
111 NORTH ELEVATION  
BUILDING J, K2 1" = 20'



4  
111 NORTH ELEVATION (CONT.)  
BUILDING K1, G, L 1" = 20'



ELEVATIONS

APPLICANT: COCONUT CREEK DEVELOPMENT LLC

Job No.: 2005113 Date: 03-23-09 Checked: Drawn: SOUTH WEST CORNER OF LYONS ROAD AND WILES ROAD, COCONUT CREEK, FLORIDA

ALL RIGHTS RESERVED

**DORSKY  
HODGSON  
PARRISH  
YUE**  
AA 26001261  
Architecture  
Planning  
Interiors  
Environmental  
Graphics  
Cleveland  
Fort Lauderdale  
Washington DC  
Ft. Lauderdale, Florida 33394  
Phone (954) 524-8686  
Fax (954) 524-8604

APR 14 2009  
Regis J. Korba Victor K. Yue  
AR 0015112 AR 0013087

Issue: Date:  
SITE PLAN Submittal 03-28-2006  
DRC Comments #1 04-27-2006  
DRC Comments #2 07-06-2006  
Rev. #3 Tree & Plant 07-19-2006  
Rev. #4 Final Engin. 12-15-2006  
Rev. #5 Final Site App. 01-29-2007  
Rev. #6 Admin. App. 06-25-2007  
Rev. #7 Admin. App. 08-16-2007  
Rev. #8 Admin. App. 12-04-2007  
Hdg. L. Bank Bldg G, PG3  
Rev. #9 Revised Admin. 03-07-2008  
Approval Resubmission  
Rev. #10 Revised Admin. 04-01-2008  
Approval per Comments  
Rev. #14 Revised Admin. 08-01-2008  
Central Plaza Area  
Rev. #16 Revised Admin. 09-15-2008  
City Comments - Central Plaza Area  
Rev. #17 VE PG3 03-23-2009

A 111