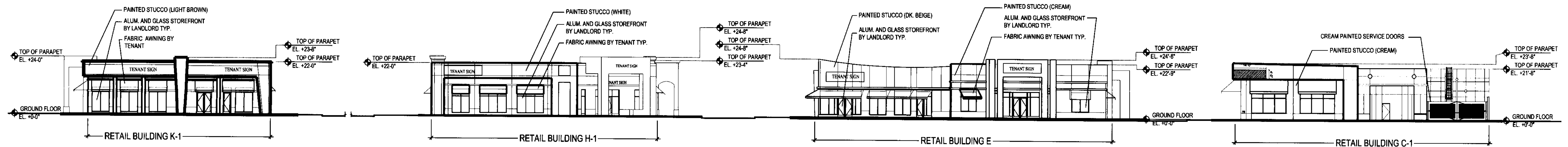
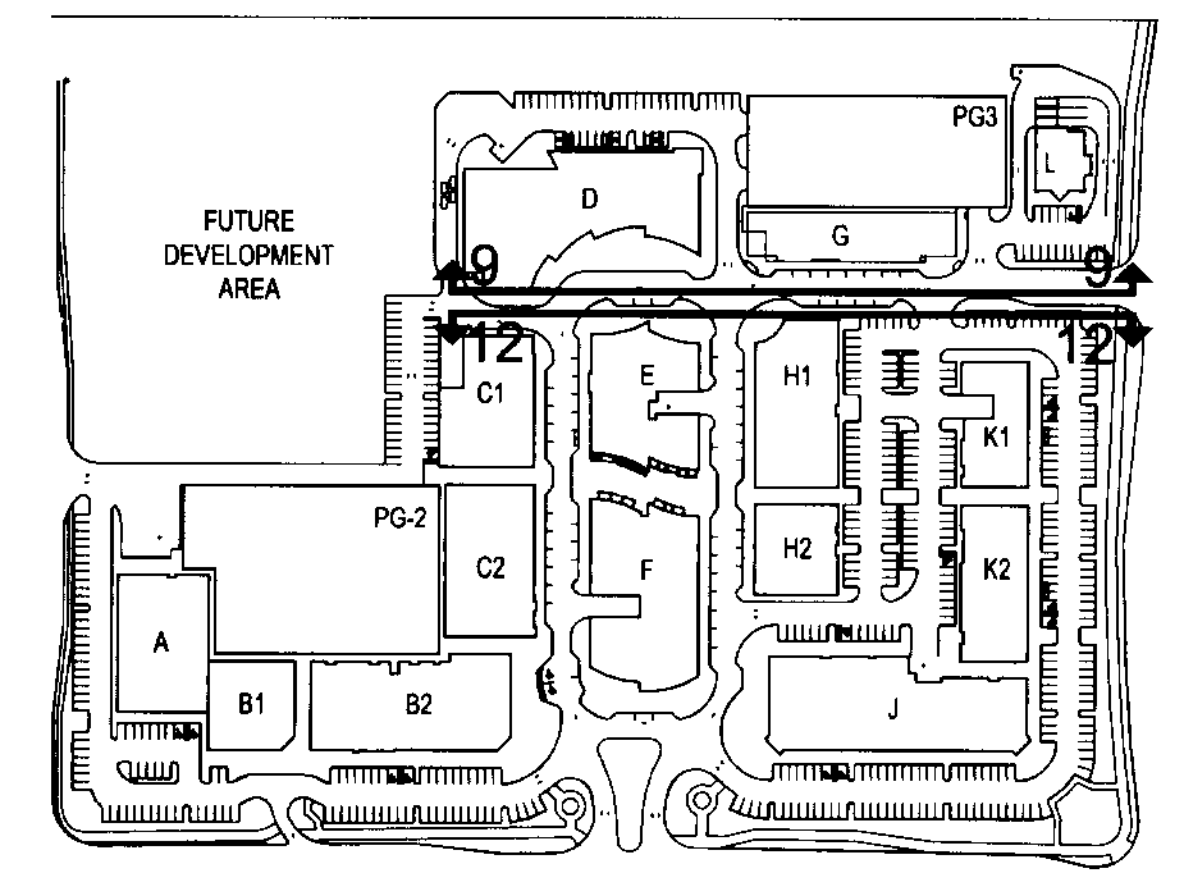


9 EAST ELEVATION  
115 BUILDING D, G, L  
1" = 20'



12 WEST ELEVATION  
115 BUILDING K1, H1, E, C1  
1" = 20'



KEY PLAN

TENANT SIGNS TO COMPLY WITH APPROVED SIGNAGE PLAN.

APR 14 2009

Regis J. Korba Victor K. Y. AR 0015112 AR 00130

Issue: 03-28-2  
SITE PLAN Submittal 04-27-2  
DRC Comments #1 07-06-2  
DRC Comments #2 07-19-2  
Rev. #3 Tree & Plant 12-15-2  
Rev. #4 Final Engin. 01-29-2  
Rev. #5 Final Site App. 06-25-2  
Rev. #6 Admin. App. 08-16-2  
Rev. #7 Admin. App. 12-04-2  
Rev. #8 Admin. App. 03-07-2  
Hdg. L-Bank Bldg. C, PG3  
Rev. #9 Revised Admin. Approval Resubmission 04-01-2  
Rev. #10 Revised Admin. Approval per Comments 08-01-2  
Rev. #14 Revised Admin. Central Plaza Area 09-15-2  
Rev. #16 Revised Admin. City Comments - Central Plaza Area 03-23-2  
Rev. #17 VE PG3



**DORSKY  
HODGSON  
PARRISH  
YUE**

AA 26001261

Architecture  
Planning  
Interiors  
Environmental  
Graphics

Cleveland  
Fort Lauderdale  
Washington DC

Ft. Lauderdale, Florida 33394  
Phone (954) 524-8686  
Fax (954) 524-8604

ELEVATIONS  
APPLICANT: COCONUT CREEK DEVELOPMENT LLC  
Job No.: 2005113  
Date: 03-23-09  
South West Corner of Lyons Road and Wiles Road, Coconut Creek, Florida  
Checked: Drawn: 2005113

A 115