

REAR (WEST) ELEVATION

SCALE: 1/8" = 1'-0"

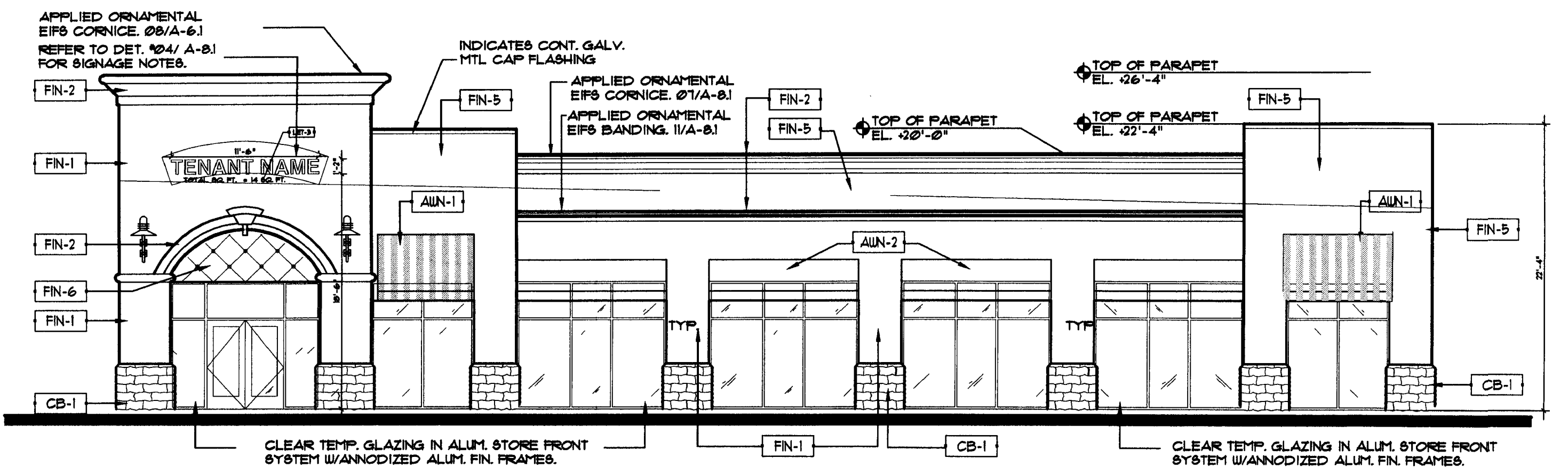
03



FRONT (EAST) ELEVATION

SCALE: 1/8" = 1'-0"

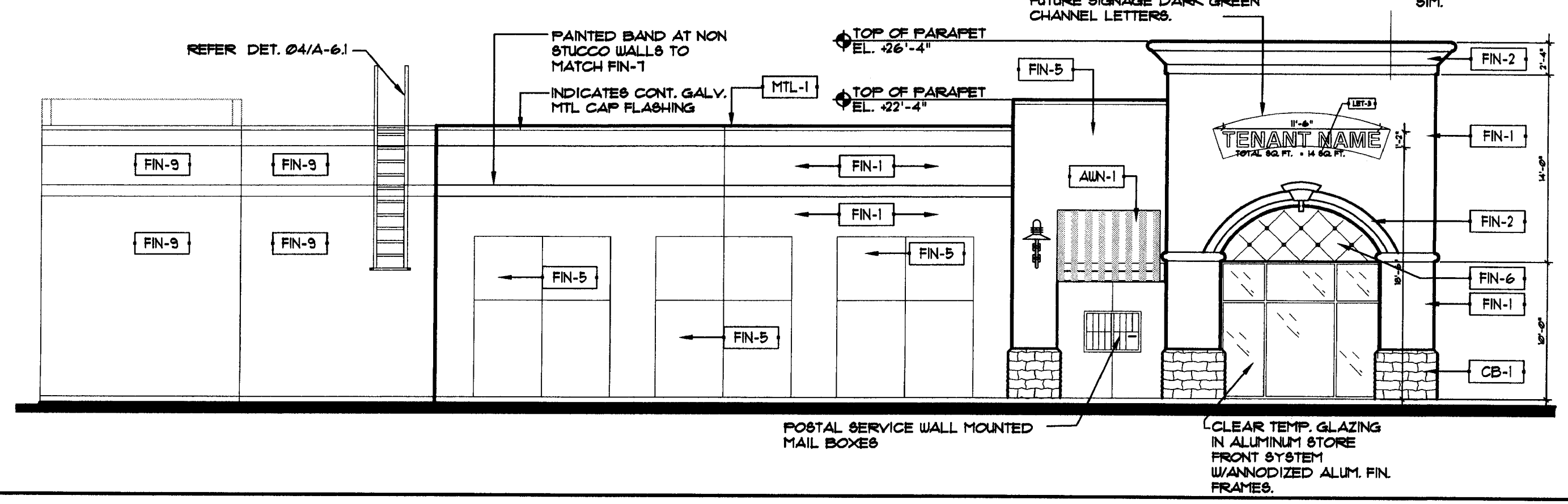
02



SIDE (NORTH) ELEVATION

SCALE: 1/8" = 1'-0"

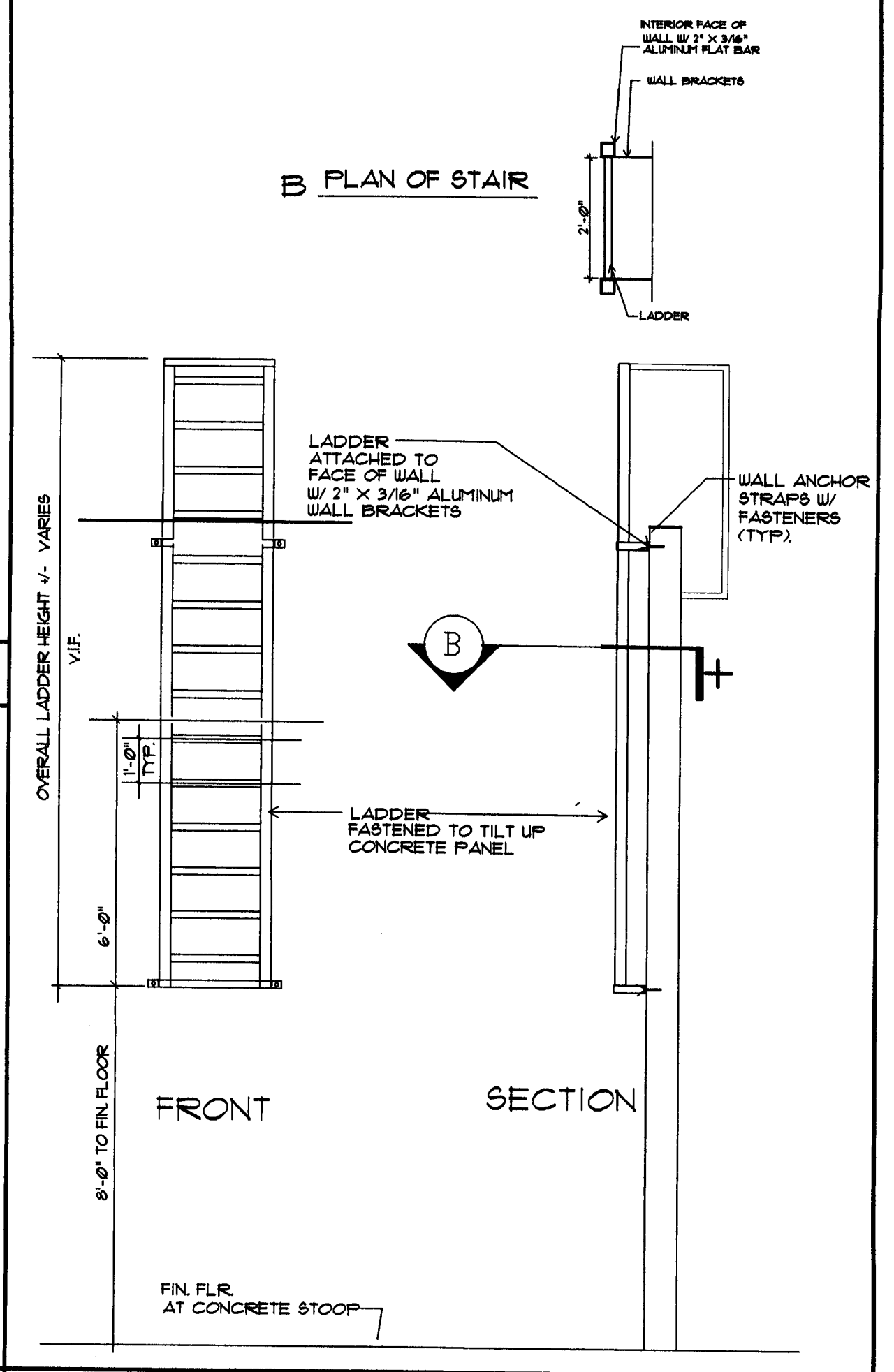
06



SIDE (SOUTH) ELEVATION

SCALE: 1/8" = 1'-0"

05



EXTERIOR LADDER DETAIL

04

MARK	DESCRIPTION
CB-1	4"x8"x16" SPLITFACE BLOCK VENEER (WITH CORNERS AS REQ'D) WITH BLOCK VENEER ANCHORS TO PLYWOOD SUBSTRATE. PROVIDE 4"x8"x16" SPLIT FACE SLOPED BILL CAP. PAINT BENJAMIN MOORE BROOKLINE BEIGE #HC-41.
CB-2	NOT USED
FIN-1	PEBBLE TEXTURE STUCCO PAINTED BENJAMIN MOORE MYSTIC BEIGE #2162-60 SATIN
FIN-2	PEBBLE TEXTURE EIFS TRIM BAND. COLOR TO MATCH BENJAMIN MOORE WHITE CLOUD #2193-10
FIN-3	UNDER ALL CANOPIES, BM #2162 OCTOBER SKY
FIN-4	NOT USED
FIN-5	PEBBLE TEXTURE STUCCO PAINTED BENJAMIN MOORE BROOKLINE BEIGE # HC-41.
FIN-6	PEBBLE TEXTURE STUCCO 16"x16" PATTERN W/ 1/4" x 1/4" V SCORING PAINTED BENJAMIN MOORE BROOKLINE BEIGE # HC-41.
FIN-7	CONT. STUCCO REVEAL BANDS COLOR TO MATCH BENJAMIN MOORE WHITE CLOUD #2193-10
FIN-8	HOLLOW METAL DOORS PAINTED BROOKLINE BEIGE #HC-41
FIN-9	CONCRETE BLOCK WITH CONC. SEALER. PAINTED TO MATCH BENJAMIN MOORE MYSTIC BEIGE # 2162-60
MTL-1	PRE-FINISHED METAL TO MATCH FIN-2
AUN-1	FIRE RESISTIVE FABRIC AINING; COATED POLY/COTTON FABRIC HOOVER CANVAS PRODUCTS UNITEK-#669 TERRA COTA.
AUN-2	FIRE RESISTIVE FABRIC AINING; COATED POLY/COTTON FABRIC HOOVER CANVAS PRODUCTS UNITEK-#664 FOREST GREEN W/ 65% KHAKI.

EXTERIOR FINISH SCHEDULE

01

REVISIONS:

SEAL

CONSULTANT
JEFFREY L. PEAL
FL Reg. # 9002

Architectural 6400 inc.
A Division of Stiles Corporation
300 S.E. 2nd Street
Fort Lauderdale, Florida 33301
954 - 621 - 9180

A PROPOSED RETAIL BUILDING:
WESTCREEK COMMONS
RETAIL 'B'
HILLSBORO AND LYONS
COCONUT CREEK, FLORIDA

EXTERIOR ELEVATIONS

A-6.1
DRC

PROJECT NO. 01023
DRAWN BY: GM/D.A.H.G.
CHECKED BY: GM
DATE: 4-15-02
PERMIT SET: RETAIL 'B'

T:\BACKUP\Westcreek Commons\Retail\Construction Documents\Retail B 1023 A 6.1.dwg, A.E.I., 04/15/02 03:15:35 PM, C:\DWG\2002\3.dwg, GMA