

LEGEND:

- TREE OR PALM TO BE RELOCATED
SEE SHEET LA-5 PLANT LIST FOR KEY NAME
SEE TREE SURVEY FOR TREE/PALM NAME AND SIZE
- NEW TREE, SHRUB OR GROUNDCOVER
SEE SHEET LA-5 PLANT LIST FOR KEY NAME AND SPECIFICATION
- PLANT QUANTITY

- PROPOSED TREE SYMBOLS
(SEE PLAN FOR TYPE & QUANTITY)
- PROPOSED PALM SYMBOLS
(SEE PLAN FOR TYPE & QUANTITY)
- EXISTING CABBAGE PALM TO REMAIN
- EXISTING SLASH PINE TO REMAIN
- EXISTING OAK TREE TO REMAIN
- RELOCATED OAK TREE
- RELOCATED CABBAGE PALM

NOTES:

SEE SHEET LA-3 FOR LANDSCAPE CALCULATIONS.
SEE SHEET LA-3 FOR PLANT LIST.
SEE SHEET LA-4 FOR PLANTING DETAILS & SPECIFICATIONS.

PROF TO E

PROF TO E

LYONS

SIGHT TRIANGLE

25' HIGH BERT

25' HIGH BERT

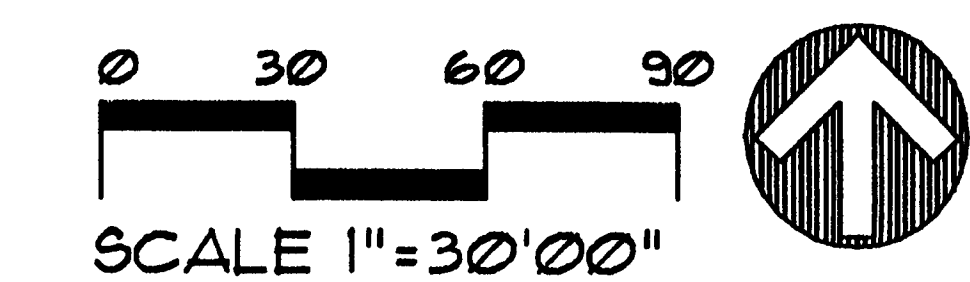
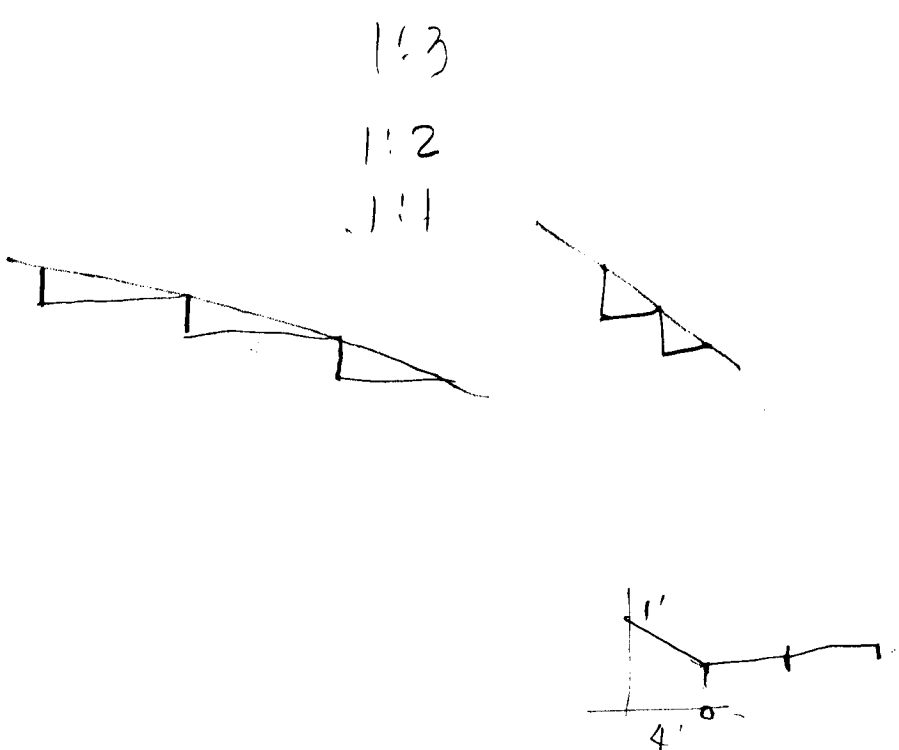
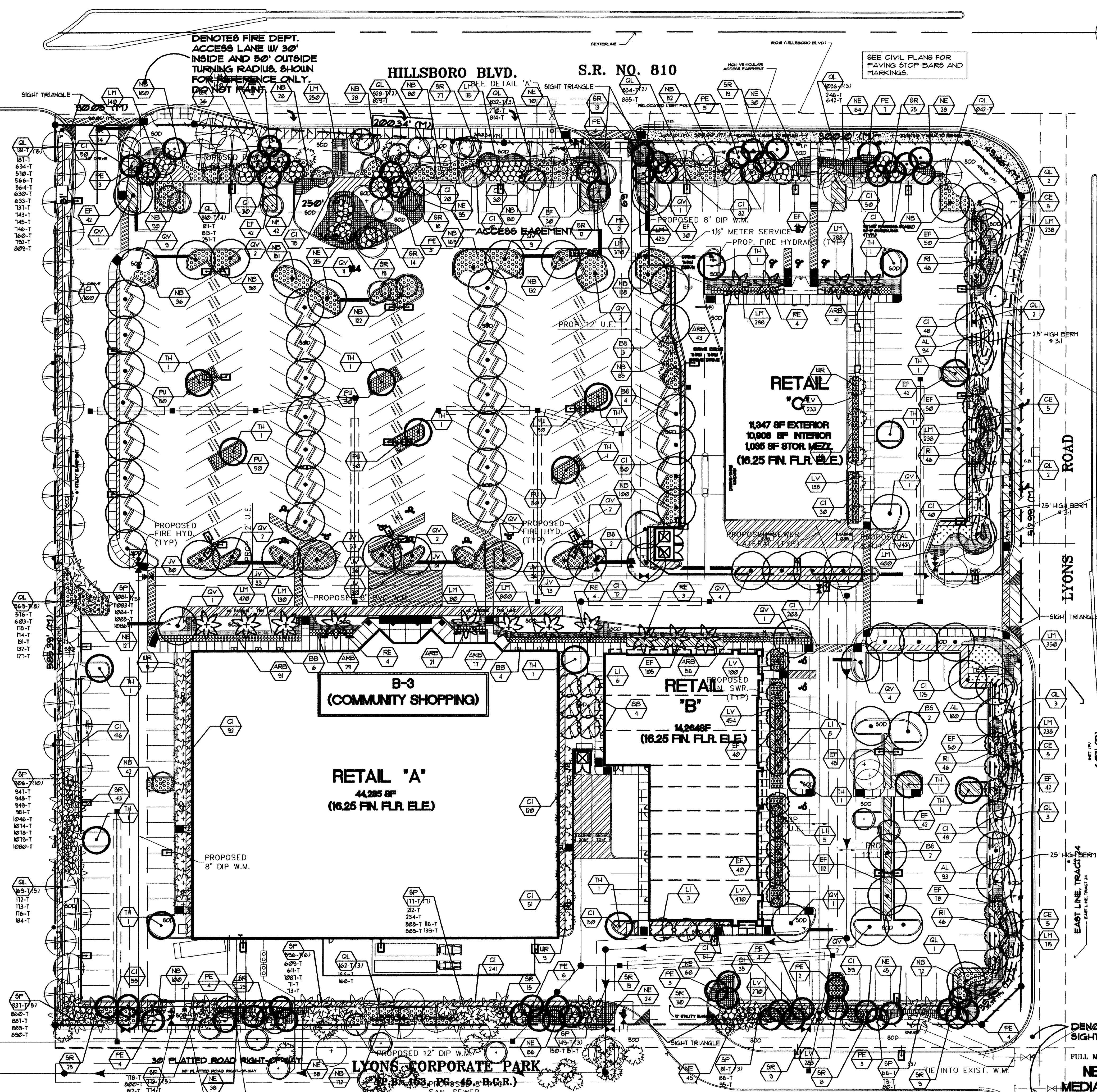
EAST LINE, TRACT 4

DENOTES 25' HIGH BERT

FULL MEDIAN OPEN

NEW FULL MEDIAN OPEN

EXIST 8" F.M.



RECEIVED
AUG 08 2002
Stiles Construction

PREPARED BY:
ECOPLAN
ECOLOGICAL / ENVIRONMENTAL LAND PLANNING
LAND USE ANALYSIS LANDSCAPE ARCHITECTURE
555 SE 4th AVENUE, FORT LAUDERDALE, FL 33136
PH (954) 524-3722 FAX (954) 524-5229

Architecture 6400 inc.
A Division of Stiles Corporation
300 S.E. 2nd Street
Fort Lauderdale, Florida
954 - 627- 9100 33301

**SITE PLAN
SUBMITTAL**

WESTCREEK COMMONS
CITY OF COCONUT CREEK, FLORIDA
LYONS ROAD AND HILLSBORO BLVD.

**TREE
PLANTING PLAN**

DATE	AUGUST 28, 2001	
PROJECT NUMBER	0126	
DRAWN BY	JBE	
CHECKED BY	RH	
SCALE	1"=30'00"	
REVISION	DATE	BY
SITE PLAN REVISIONS	10-12-01	JBE
AND DRC COMMENTS		
DRC COMMENTS	11-5-01	JBE
SITE PLAN MOD.	2-5-02	JBE
SITE PLAN MOD.	3-7-02	JBE
PLANTING MOD.	4-5-02	JBE
SHEET NUMBER:		

LA-2
DRC

Philip Stiles

ZONING PUD
(PLAN UNIT
DEVELOPMENT)

**B-3
(COMMUNITY SHOPPING)**

RETAIL 'A'
44,285 SF
(16.25 FN. FLR. ELE.)

RETAIL 'B'
14,264 SF
(16.25 FN. FLR. ELE.)

RETAIL
11,347 SF EXTERIOR
10,808 SF INTERIOR
1,055 SF STOR. MEZZ.
(16.25 FN. FLR. ELE.)

LYONS CORPORATE PARK

03 REGIONAL LYONS CORPORATE PARK