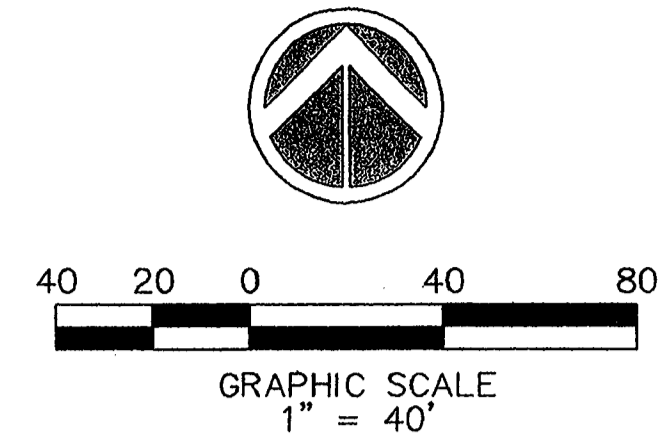
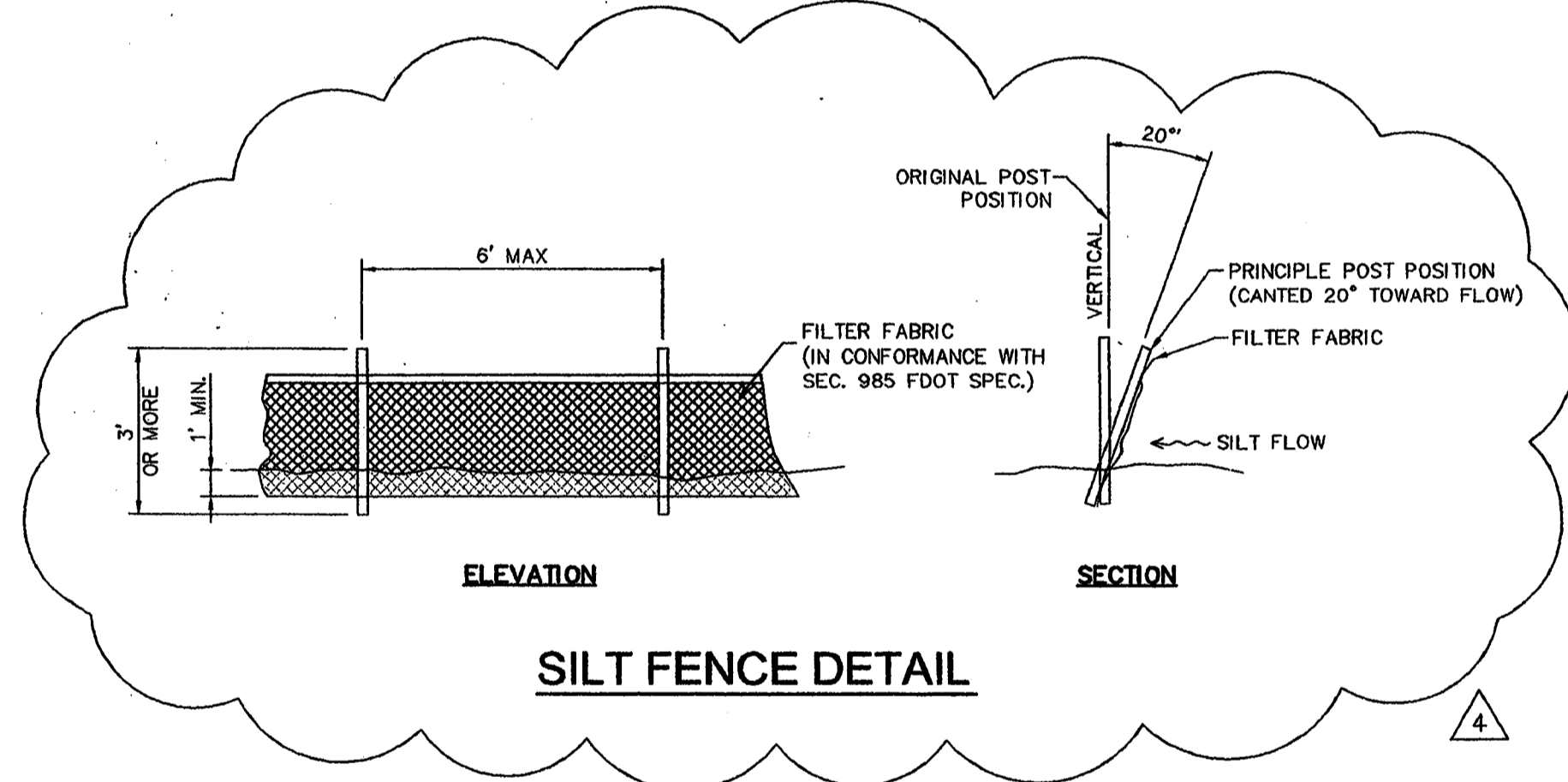
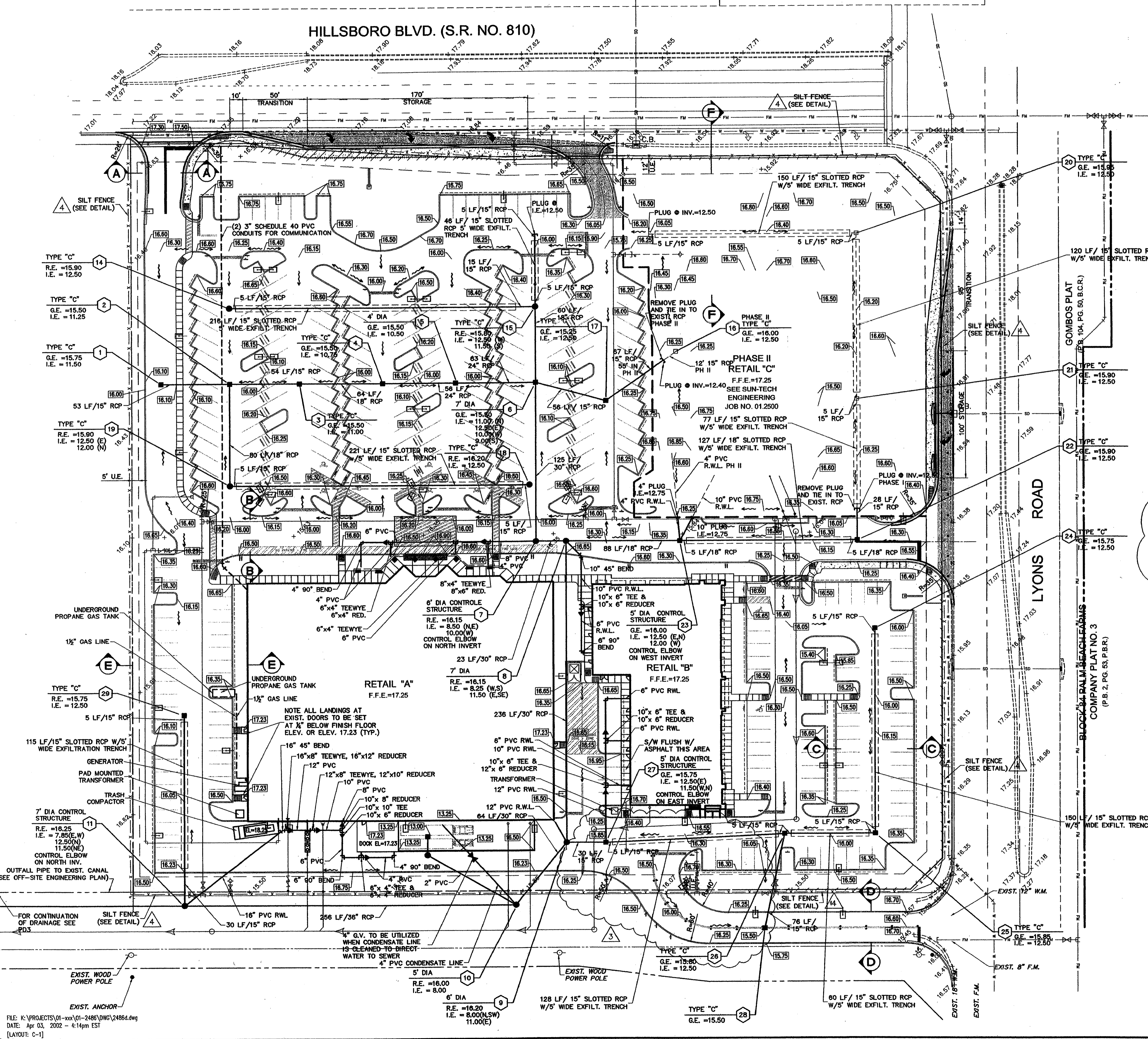


CENTRUM HILLSBORO PLAT
(P.B. 148, PG. 6, B.C.R.)



HILLSBORO BLVD. (S.R. NO. 810)



ON-SITE PAVEMENT NOTES:

1. THE WEARING SURFACE SHALL BE 1 1/2\"/>

PAVING & DRAINAGE LEGEND

R.E.	RIM ELEVATION
G.E.	GRATE ELEVATION
I.E.	INVERT ELEVATION
→	DIRECTION OF FLOW
150' @ 0.5%	PAVEMENT SLOPE
P.R.B.	POLLUTION RETARDANT BASIN
F.F. = 10.00	FINISHED FLOOR ELEVATION
○	EXISTING OR FUTURE UTILITIES
○	CATCH BASIN
○	STRUCTURE DESIGNATION
100 LF / 15\"/>	
150' @ 0.5%	EXISTING GRADE
0.00	PROPOSED GRADE
	D.I.P. PIPE

Sun-Tech Engineering, Inc.
Engineers - Planners - Surveyors
1600 West Oakland Park Boulevard
Ft. Lauderdale, FL 33311
E-Mail: suntech@suntechengineering.com
Phone (954)777-3123
Fax (954)777-3114

REVISIONS

NO.	DATE	DESCRIPTION
1	01-15-02	PER CITY REVIEW
2	02-04-02	PER REVISED SITE PLAN
3	03-08-02	REVISED SOUTH ENTRANCE

WESTCREEK COMMONS
FLORIDA
PAVING, GRADING AND DRAINAGE PLAN
COCONUT CREEK

DATE:
NOV. 2001

SCALE:
1" = 40'

DESIGNED BY:
M.G.

DRAWN BY:
A.E.V.

JOB NUMBER
01-2486

SHEET No.
PD1

RECEIVED
APR 0 8 2002
Stiles Construction

SEAL
APR 0 5 2002

K:\PROJECTS\01-2486\DWG\2486.dwg, C:\DWG\2002\04-14-02 PM 1:11 Sun-Tech Engineering, Inc. (DWG)
 FILE: K:\PROJECTS\01-2486\DWG\2486.dwg
 DATE: Apr 03, 2002 - 4:14pm EST
 [LAYOUT: C-1]