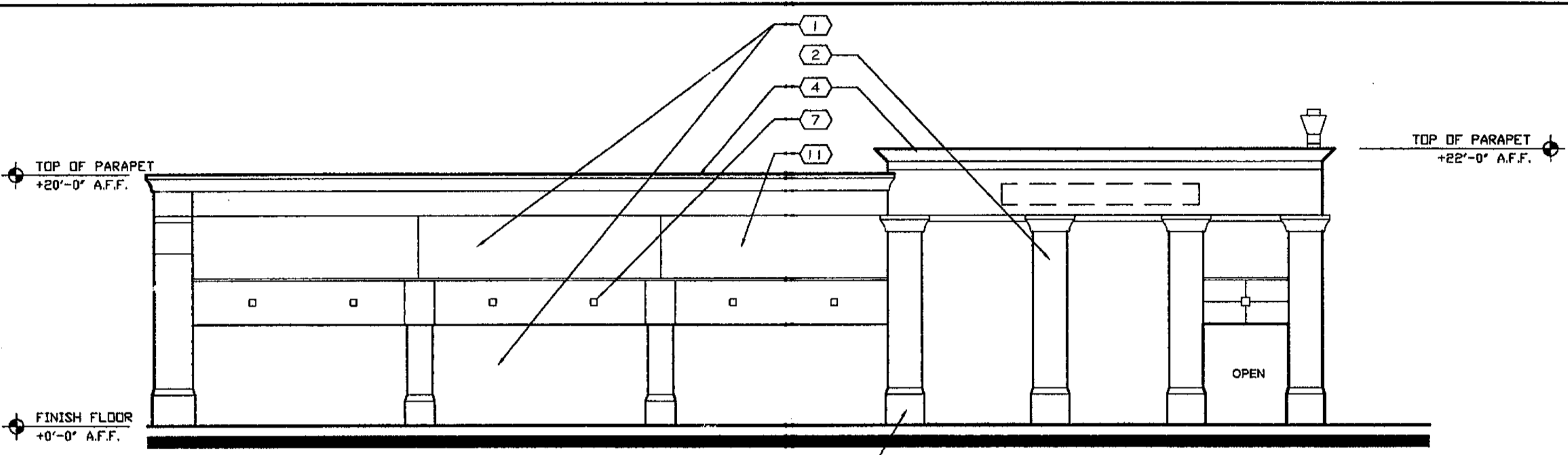


WEST ELEVATION

SCALE: 1/8" = 1'-0"

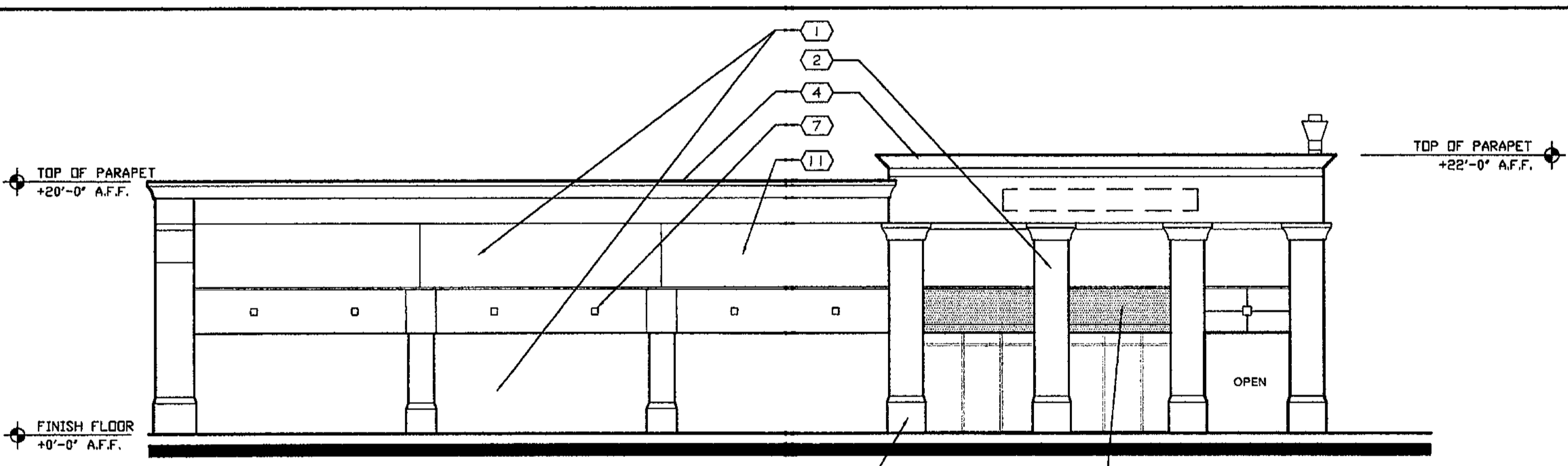
4  
 A-3.1



NORTH ELEVATION

SCALE: 1/8" = 1'-0"

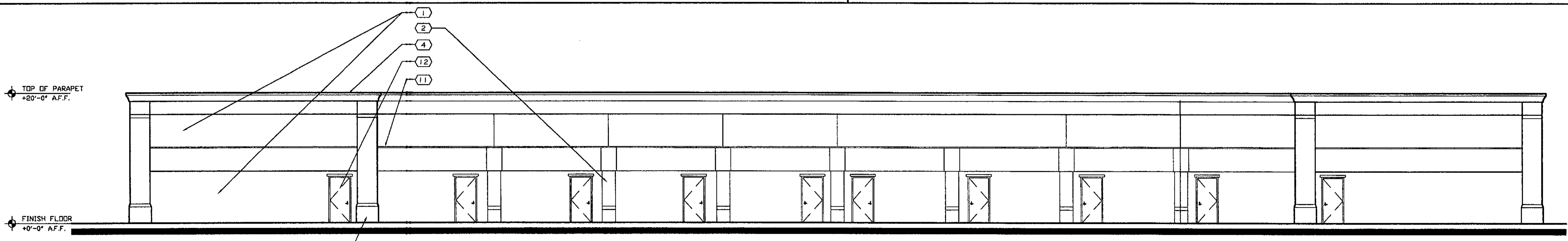
3  
 A-3.1



SOUTH ELEVATION

SCALE: 1/8" = 1'-0"

2  
 A-3.1



EAST ELEVATION

SCALE: 1/8" = 1'-0"

1  
 A-3.1

- 1 FIELD WALL - COLOR: DESERT FAWN - 8222W BY DURON PAINTS. ( LITE BEIGE )
- 2 COLUMN SHAFT - COLOR: BALSAM BARK - 8224M BY DURON PAINTS. ( MEDIUM BEIGE )
- 3 COLUMN BASE - COLOR: AUTUMN WHEAT - 8225D BY DURON ( DARK BEIGE )
- 4 APPLIED FOAM BANDS W/ STUCCO FINISH - COLOR: HAYSEED 8220W BY DURON PAINTS. ( OFFWHITE GREY )
- 5 STOREFRONT SYSTEM W/ FACTORY APPLIED PAINT ENAMEL - COLOR: DARK BRONZE
- 6 WALL MOUNTED LIGHT FIXTURE. COLOR: DARK BRONZE
- 7 INSCRIBED ON THE WALL SOLID 8"X8" MEDALLION - COLOR: BALSAM BARK - 8224M BY DURON PAINTS. ( MEDIUM BEIGE )
- 8 INDICATES REVERSE ALUMINUM CHANNEL LETTERS BACKLIT, UP TO 30" IN HEIGHT. COLOR: RED OR AS ALLOWED BY COCONUT CREEK LAND DEVELOPMENT CODE, SIGN CRITERIA. REFER TO SHEET A-3.2 FOR SIGN PLAN.
- 9 VINYL AWNING - COLOR: TERRACOTA BY SUMBRELLA OR EQUAL.
- 10 DECORATIVE KEYSTONE INSCRIBED ON WALL - COLOR: BALSAM BARK - 8224M BY DURON PAINTS. ( MEDIUM BEIGE )
- 11 INSCRIBED ON THE WALL REVEAL LINE.
- 12 METAL SERVICE DOOR - COLOR: DESERT FAWN - 8222W BY DURON PAINTS. ( LITE BEIGE )
- 13 ADDRESS SIGN WITH 3" HIGH NUMBERS MAXIMUM. COLOR: WHITE

KEY NOTES

5  
 A-3.1