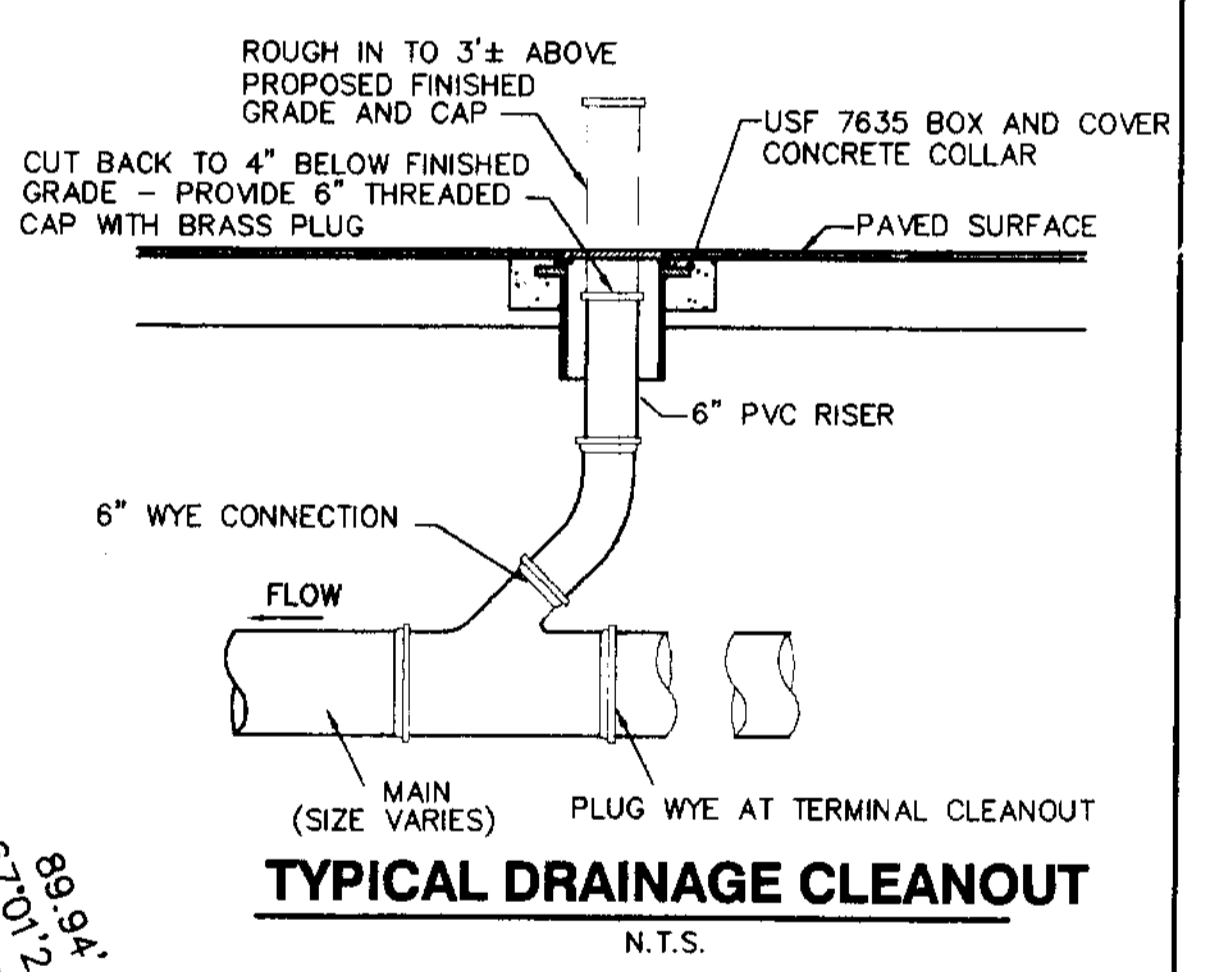


DRAINAGE STRUCTURES	
S-1	INLET TYPE "C" GRATE ELEV. 15.08 15" RCP INV. ELEV. (S) 10.00
S-2	INLET TYPE "C" GRATE ELEV. 15.08 15" RCP INV. ELEV. (S) 9.80 15" RCP INV. ELEV. (N) 9.80
S-3	INLET TYPE "C" GRATE ELEV. 15.08 15" RCP INV. ELEV. (N) 9.60 18" RCP INV. ELEV. (S) 9.60
S-4	MANHOLE TYPE "P" RIM ELEV. 16.50 18" RCP INV. ELEV. (E) 9.40 18" RCP INV. ELEV. (W) 9.40
S-5	MANHOLE TYPE "P" W/ PRB (W) RIM ELEV. 15.25 18" RCP INV. ELEV. (E) 9.10 18" RCP INV. ELEV. (W) 9.10
S-6	INLET TYPE "D" GRATE ELEV. 12.00 18" RCP INV. ELEV. (E) 8.50

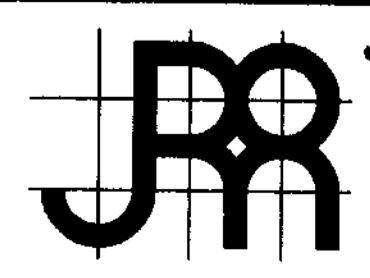
R = 2,606.48'
Δ = 9'43'33"
L = 442.44'

SAWGRASS EXPRESSWAY



- NOTES**
- SEE SHEET 2 FOR TYPICAL SECTIONS, NOTES AND DETAILS.
 - SEE SHEET 3 FOR WATER AND SEWER SERVICE PLAN.
 - DRAINAGE PIPE SHALL BE REINFORCED CONCRETE PIPE, CLASS III, WALL B, ASTM C-76 SPECIFICATION.
 - PVC PIPE AND FITTING FOR DRAINAGE SHALL BE SDR-35 PIPE PER ASTM D-3034.
 - 7-90 INDICATES EXIST. GRADE
8-20 INDICATES PROPOSED GRADE

DESIGNED BY	JWR	8/04			
DRAWN BY	JWR	8/04			
CHECKED BY	JWR	8/04			
APPROVED BY	JWR	8/04	REV PER CITY COMMENTS	1	9/23/04 JWR
NAME	DATE		REVISIONS	NO.	DATE BY



JOSEPH ROLES AND ASSOC., INC.
CONSULTING ENGINEERS
7501 N.W. 4th STREET, SUITE 101
PLANTATION, FLORIDA 33317
PHONE (954) 581-1945
CERTIFICATE OF AUTHORIZATION NO. 3948

RETAIL CENTER AT WINSTON PARK
LYONS ROAD AND WINSTON PARK BLVD.
COCONUT CREEK, FLORIDA
GRADING AND DRAINAGE PLAN

DATE:	AUGUST, 2004
SCALE:	1" = 30'
PROJECT NO.	102-419-03
SHEET NO.	6 OF 10