

FLOOR PLAN ELEV "A"

A.C. NOTE:
 ALL A.C. UNITS ARE TO BE ON LEFT SIDE OF LOT REGARDLESS OF HOUSE ORIENTATION

SQUARE FOOTAGES	
LIVING AREA	2053
GARAGE	425
ENTRY	37
TOTAL	2515



I HEREBY CERTIFY AS THE BUILDING DESIGN ENGINEER OF RECORD, THAT THE BUILDING DESIGN AS SHOWN ON THESE PLANS (STRUCTURAL COMPLIANCE ONLY) AND AS ACCOMPANIED BY DESIGN AND SUPPORT DOCUMENTS CONFORMS TO SECTION R301.1.3, R301.2.1, AND R301.2.1.2 OF THE 2007 FLORIDA BUILDING CODE, RESIDENTIAL AND THE 2007 FLORIDA BUILDING CODE. THIS DESIGN ENGINEER'S PROFESSIONAL SEALS AND SIGNATURE HAVE BEEN PREPARED IN COMPLIANCE WITH THE 2007 FLORIDA BUILDING CODE WITH THE 2009 SUPPLEMENTS.

CRAIG E. GUNDERSON, P.E. #060102 DATE

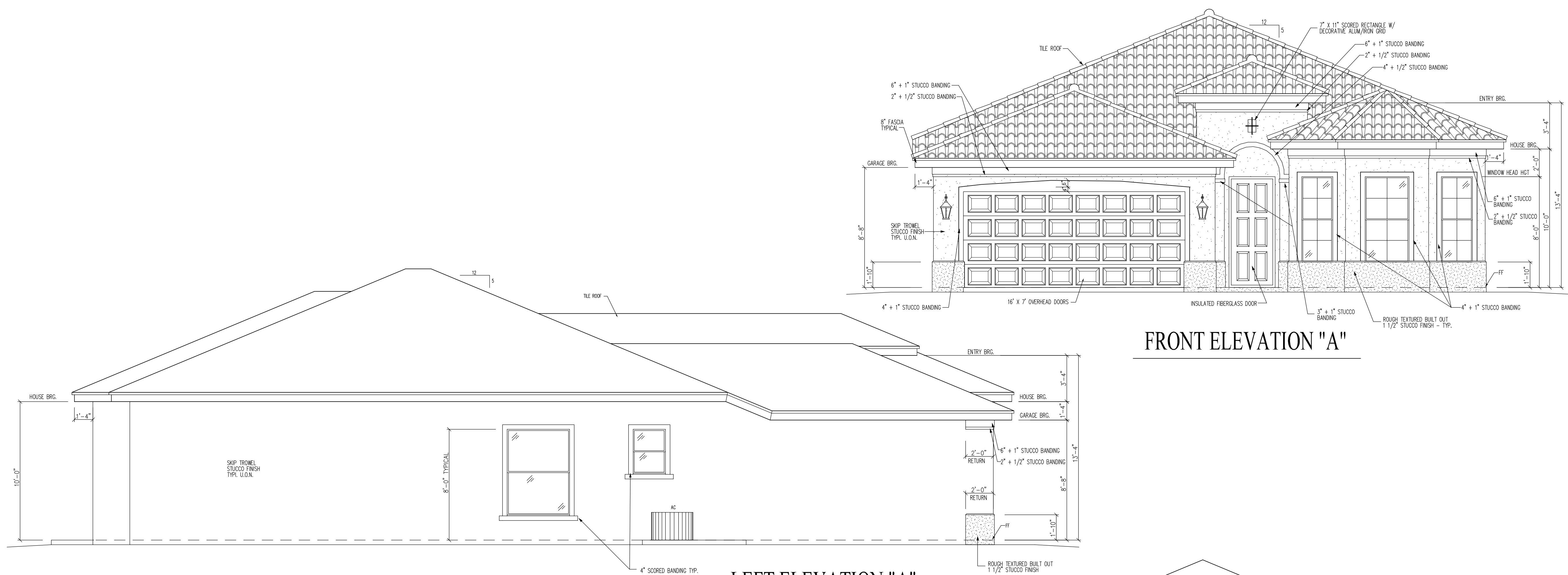
GulfCoast Engineering, LLC
 CERTIFICATE OF AUTHORIZATION #9910
 703 CAPE CORAL PARKWAY W. STE 201
 CAPE CORAL, FL 33914
 PH: 239-458-6633 FAX: 239-458-6733

STANDARD PACIFIC HOMES OF FLORIDA
 PROJECT: CARINO MODEL ELEVATION A
 405 N. RIO STREET, SUITE 330
 TAMPA, FLORIDA 33609
 PH: 813.288.7767
 F: 813.288.7689

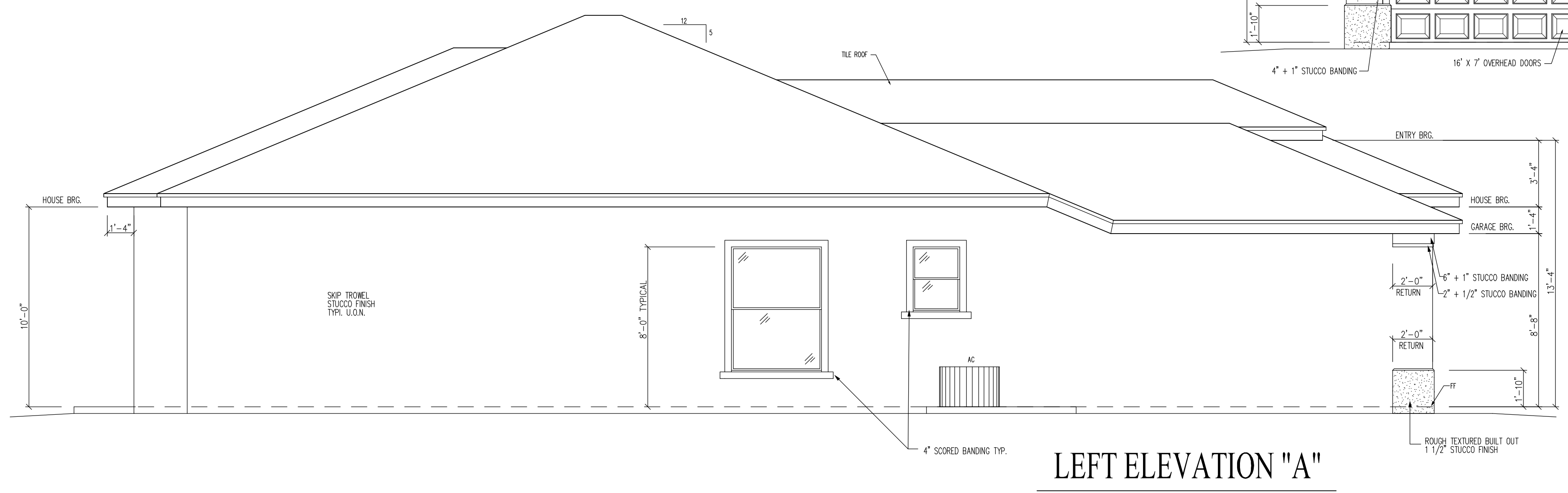
© 2010 COPYRIGHT GULFCOAST ENGINEERING, LLC

SCALE: 1/4" = 1'
 LESS NOTED OTHERWISE
 RELIM: 08/20/10
 REV: 09/10/10
 REV: 11/09/10
 REV: 11/12/10

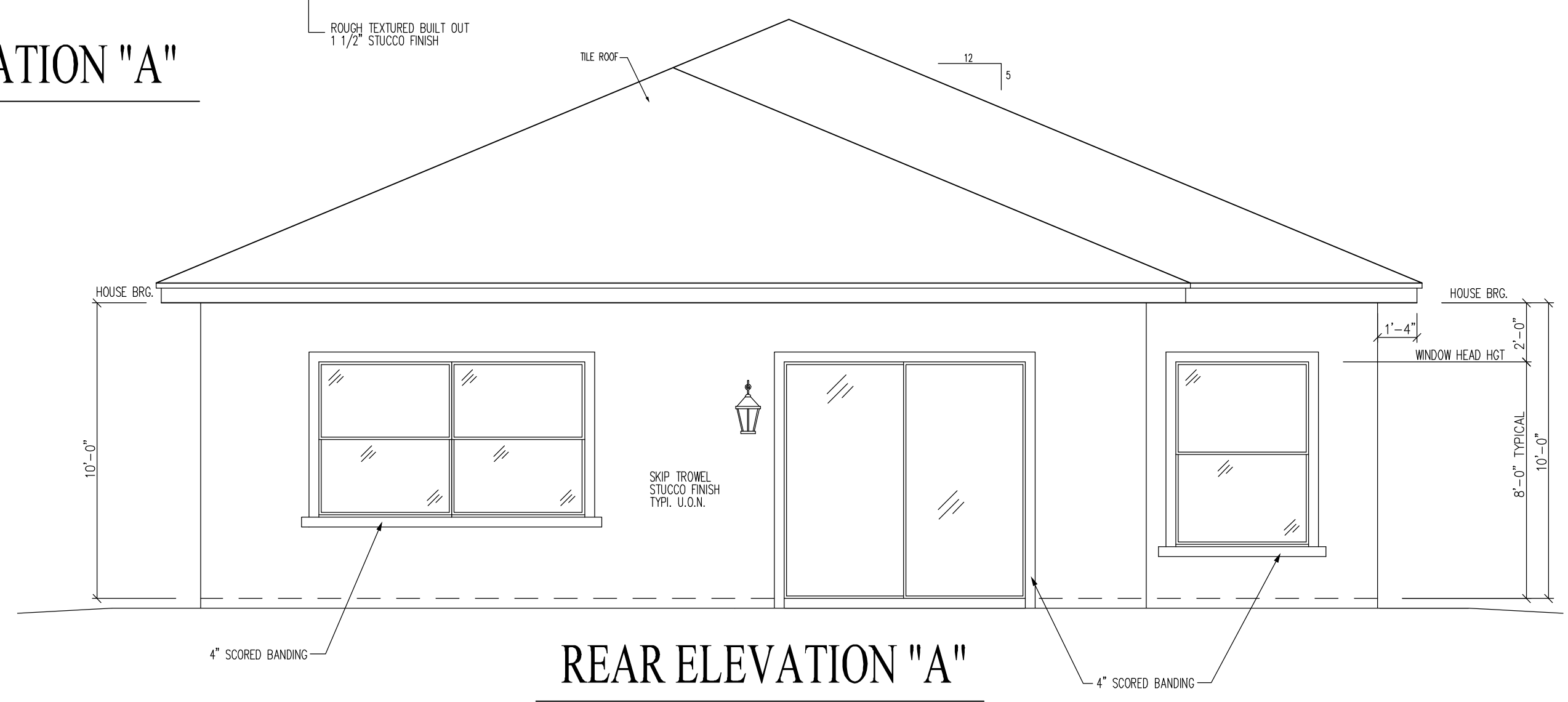
FLOOR PLAN
A-2.1A



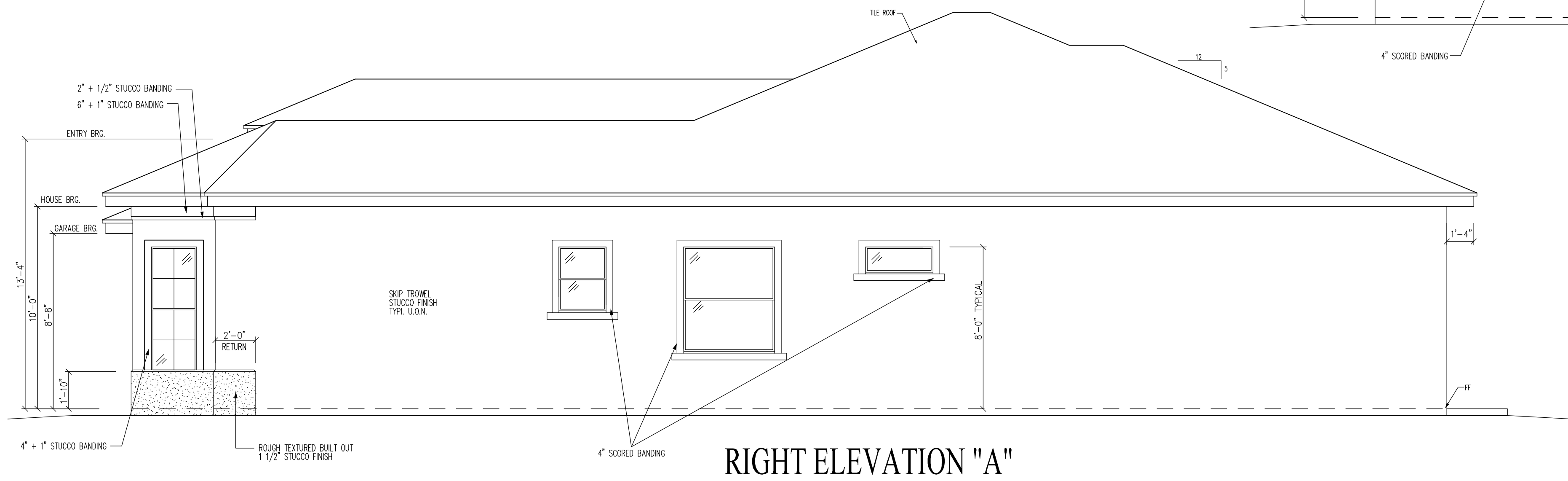
FRONT ELEVATION "A"



LEFT ELEVATION "A"



REAR ELEVATION "A"



RIGHT ELEVATION "A"

I HEREBY CERTIFY AS THE BUILDING DESIGN ENGINEER OF RECORD, THAT THE BUILDING DESIGN AS SHOWN ON THESE PLANS (STRUCTURAL COMPLIANCE ONLY) AND AS ACCOMPANIED BY DESIGN AND SUPPORT DOCUMENTS CONFORMS TO SECTION R301.1.3, R301.2.1, AND R301.2.1.2 OF THE 2007 FLORIDA BUILDING CODE RESIDENTIAL AND THE 2007 FLORIDA BUILDING CODE. THIS DESIGN ENGINEER'S SEAL AND SIGNATURE ARE REQUIRED BY THE FLORIDA BUILDING CODE. THE DESIGN ENGINEER'S COMPANY HAS HAD THIS DESIGN PREPARED IN COMPLIANCE WITH THE 2007 FLORIDA BUILDING CODE WITH THE 2009 SUPPLEMENTS.

CRAIG E. GUNDERSON, P.E. #060102 DATE

GulfCoast Engineering, LLC

CERTIFICATE OF AUTHORIZATION #9910
 703 CAPE CORAL PARKWAY W. STE 201
 CAPE CORAL, FL 33914
 PH: 239-458-6633 FAX: 239-458-6733

STANDARD PACIFIC HOMES OF FLORIDA

PROJECT: CARINO MODEL ELEVATION A

405 N. REO STREET, SUITE 330
 TAMPA, FLORIDA 33609

PH: 813.288.7767
 F: 813.288.7689

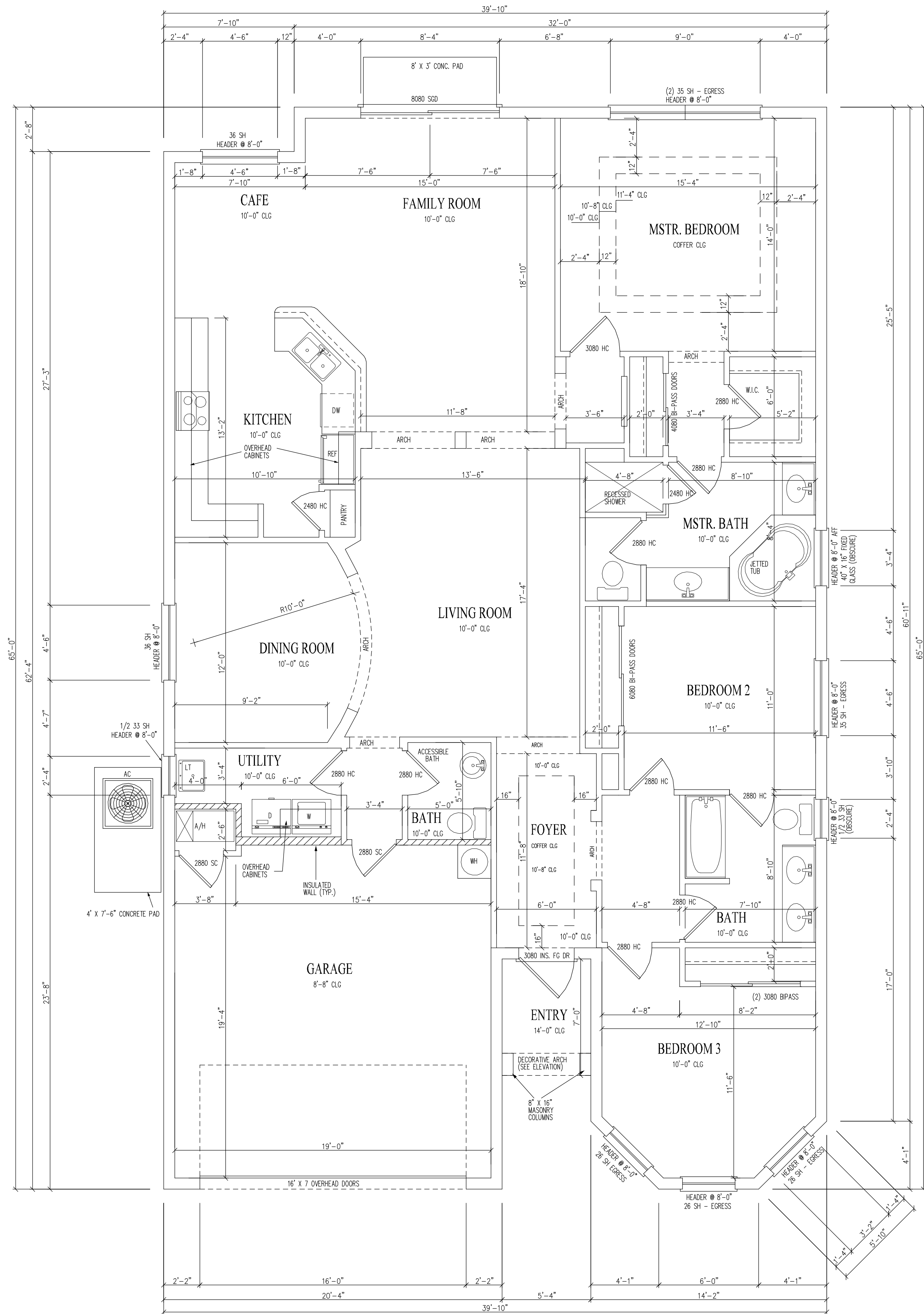
PROJECT: CARINO MODEL ELEVATION A

SCALE: 1/4" = 1'
 UNLESS NOTED OTHERWISE

PRELIM: 08/20/10
 REV: 09/10/10
 REV: 11/09/10
 REV: 11/12/10

ELEVATIONS

A-3.0A



A.C. NOTE:
 ALL A.C. UNITS ARE TO BE ON LEFT SIDE OF LOT REGARDLESS OF HOUSE ORIENTATION

SQUARE FOOTAGES	
LIVING AREA	2053
GARAGE	425
ENTRY	37
TOTAL	2515

FLOOR PLAN ELEV "B"

I HEREBY CERTIFY AS THE BUILDING DESIGN ENGINEER OF RECORD, THAT THE BUILDING DESIGN AS SHOWN ON THESE PLANS (STRUCTURAL COMPLIANCE WITH SECTION 8901.13, 8901.14, AND 8901.2.12 OF THE 2007 FLORIDA BUILDING CODE RESIDENTIAL AND THE 2007 FLORIDA BUILDING CODE. THIS CERTIFICATION DOES NOT INCLUDE ROOF COMPONENTS OF WHICH THE TRUSS DESIGN ENGINEER IS THE ENGINEER OF RECORD. PLANS HAVE BEEN PREPARED IN COMPLIANCE WITH THE 2007 FLORIDA BUILDING CODE WITH THE 2009 SUPPLEMENTS.

CRAIG E. GUNDERSON, P.E. #060102 DATE

GulfCoast Engineering, LLC

CERTIFICATE OF AUTHORIZATION #9910
 703 CAPE CORAL PARKWAY W. STE 201
 CAPE CORAL, FL 33914
 PH: 239-458-8633 FAX: 239-458-6733

STANDARD PACIFIC HOMES OF FLORIDA

405 N. REO STREET, SUITE 330
 TAMPA, FLORIDA 33609

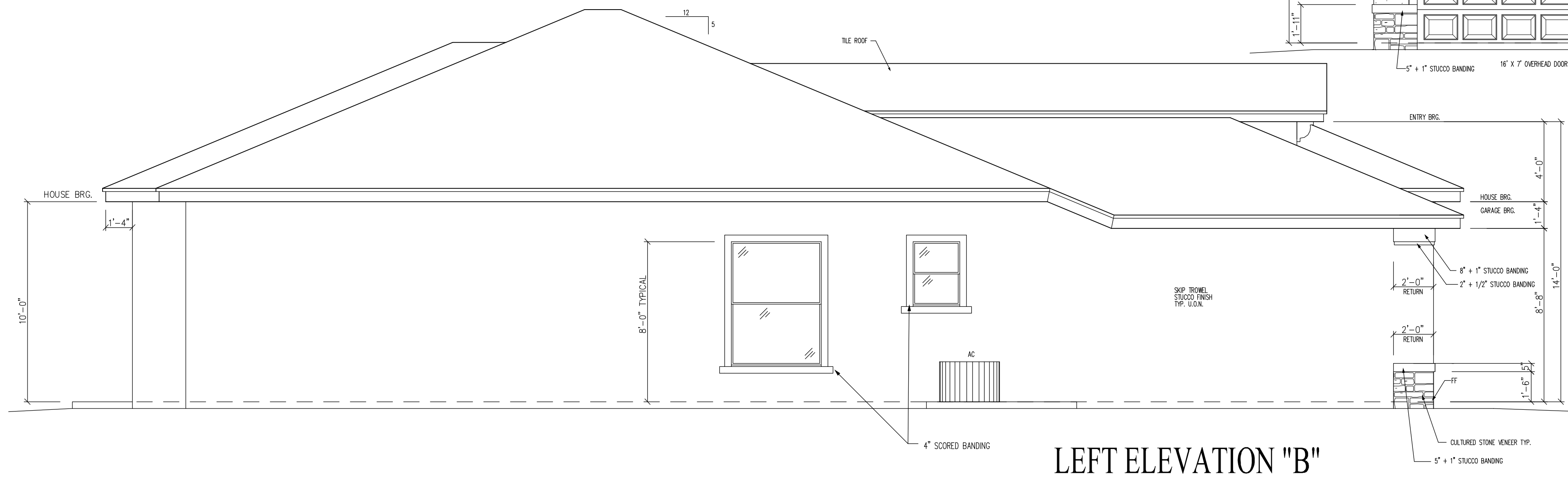
PH: 813.288.7767
 F: 813.288.7689

PROJECT:
**CARINO MODEL
 ELEVATION B**

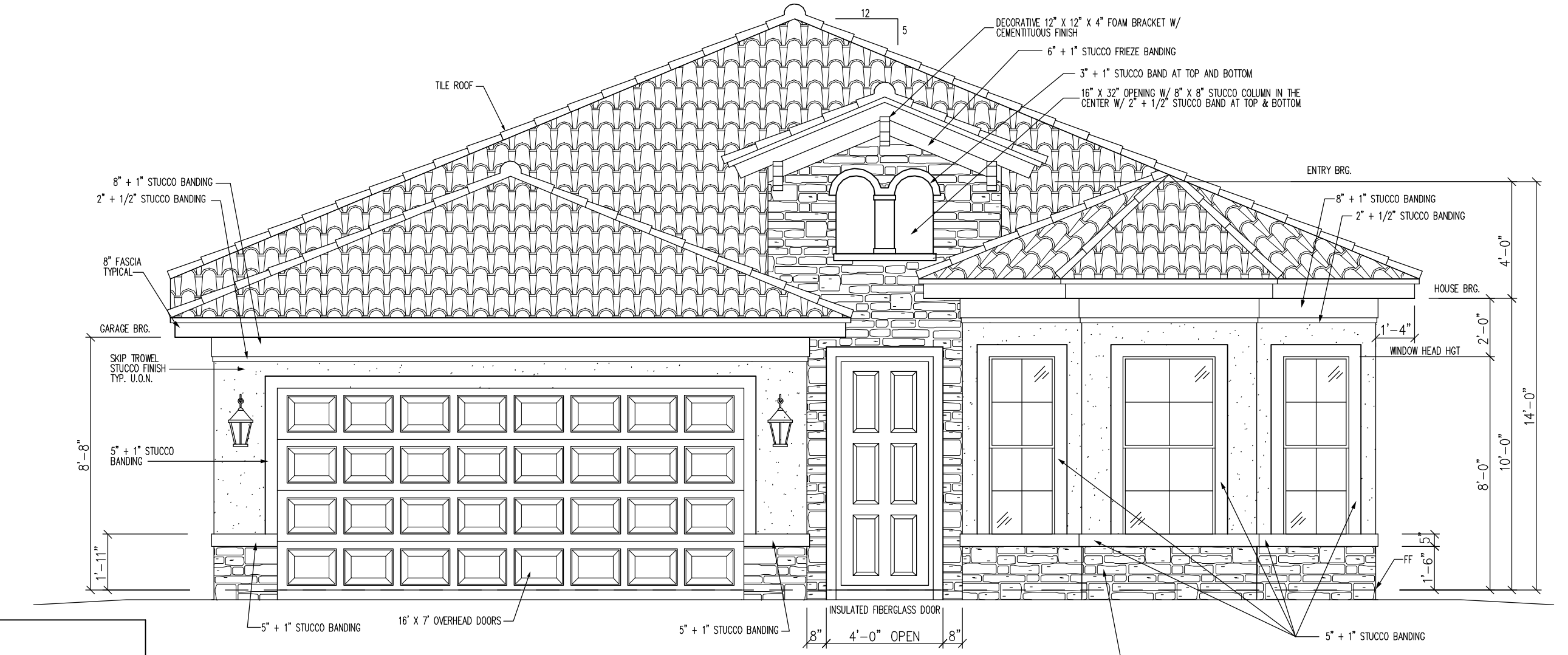
SCALE: 1/4" = 1'
 UNLESS NOTED OTHERWISE
 PRELIM: 08/20/10
 REV: 09/07/10
 REV: 11/09/10
 REV: 11/12/10

© 2010 COPYRIGHT GULFCOAST ENGINEERING, LLC

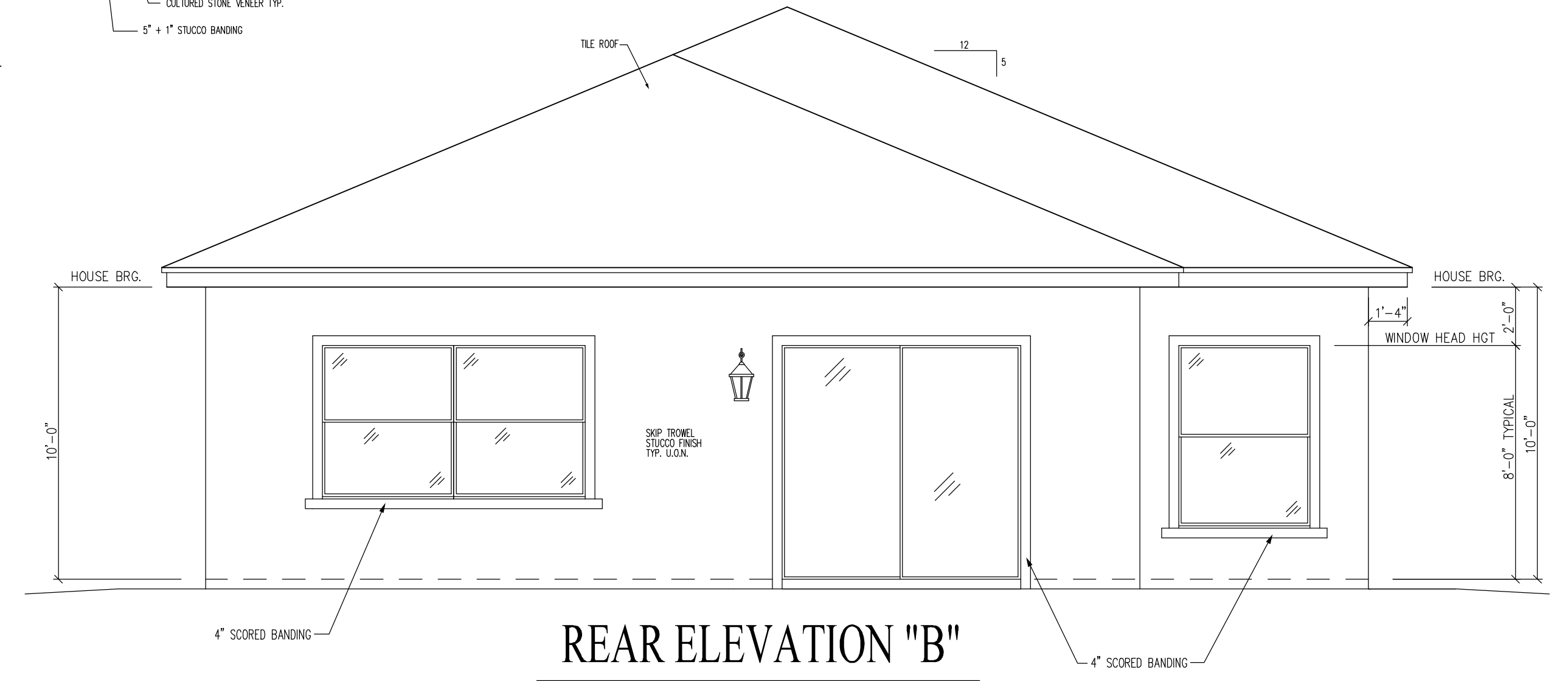
FLOOR PLAN
A-2.1B



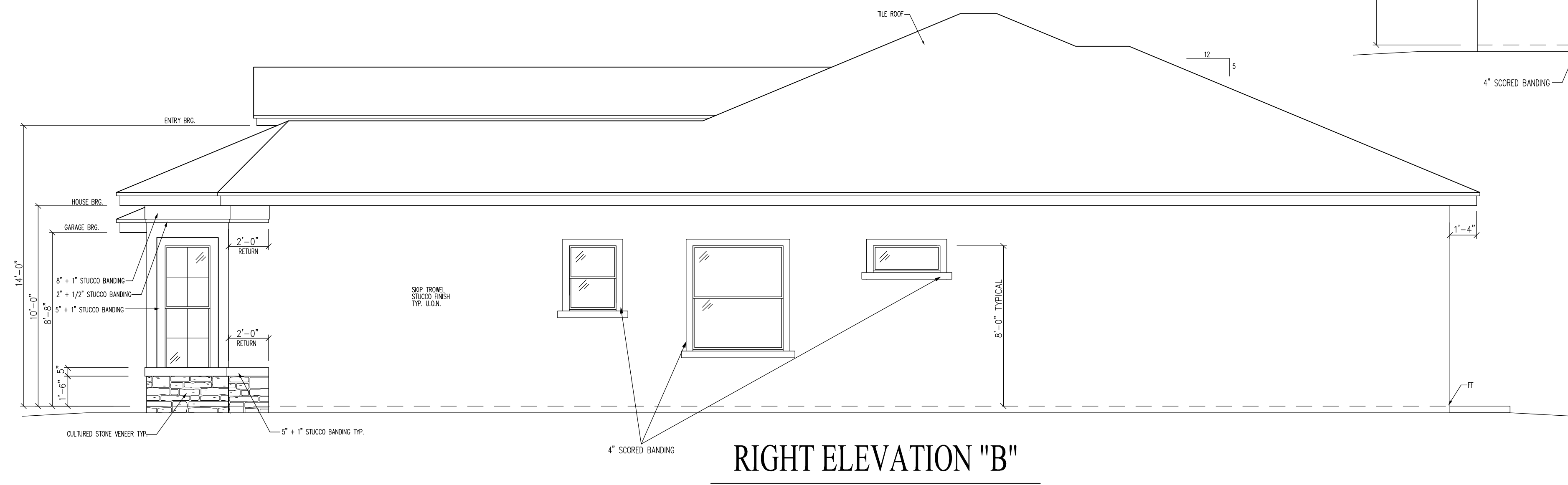
LEFT ELEVATION "B"



FRONT ELEVATION "B"



REAR ELEVATION "B"



RIGHT ELEVATION "B"

I HEREBY CERTIFY AS THE BUILDING DESIGN ENGINEER OF RECORD, THAT THE BUILDING DESIGN AS SHOWN ON THESE PLANS (STRUCTURAL COMPLIANCE AS SHOWN ON THESE PLANS) IS IN ACCORDANCE WITH THE 2007 FLORIDA BUILDING CODE RESIDENTIAL AND THE 2007 FLORIDA BUILDING CODE TRUSS DESIGN ENGINEER IS THE ENGINEER OF RECORD. PLANS HAVE BEEN PREPARED IN COMPLIANCE WITH THE 2007 FLORIDA BUILDING CODE WITH THE 2009 SUPPLEMENTS.

CRAIG E. GUNDERSON, P.E. #060102 DATE

GEE
GulfCoast Engineering, LLC
 CERTIFICATE OF AUTHORIZATION #9910
 703 CAPE CORAL PARKWAY W. STE 201
 CAPE CORAL, FL 33914
 PH: 239-458-8633 FAX: 239-458-8733

STANDARD PACIFIC HOMES OF FLORIDA
CARINO MODEL ELEVATION B
 405 N. REG STREET, SUITE 330
 TAMPA, FLORIDA 33609
 PH: 813.288.7767
 F: 813.288.7689

PROJECT:
CARINO MODEL ELEVATION B
 © 2010 COPYRIGHT GULFCOAST ENGINEERING, LLC

SCALE: 1/4" = 1'
 UNLESS NOTED OTHERWISE
 PRELIM: 08/20/10
 REV: 09/07/10
 REV: 11/09/10
 REV: 11/12/10