

1st FLOOR PLAN ELEV. "A"

A.C. NOTE:
 ALL A.C. UNITS ARE TO BE ON LEFT SIDE OF LOT REGARDLESS OF HOUSE ORIENTATION

SQUARE FOOTAGES	
1ST FLOOR LIVING	1563
2ND FLOOR LIVING	1549
ENTRY	101
GARAGE	606
TOTAL	3819



I HEREBY CERTIFY AS THE BUILDING DESIGN ENGINEER OF RECORD, THAT THE BUILDING DESIGN AS SHOWN ON THESE PLANS (STRUCTURAL COMPLIANCE ONLY) AND AS ACCOMPANIED BY THESE DOCUMENTS, IS IN ACCORDANCE WITH THE FLORIDA BUILDING CODE RESIDENTIAL AND THE 2007 FLORIDA BUILDING CODE. THIS CERTIFICATION DOES NOT INCLUDE ROOF COMPONENTS OF WHICH THE TRUSS DESIGN ENGINEER IS THE ENGINEER OF RECORD. PLANS HAVE BEEN PREPARED IN COMPLIANCE WITH THE 2007 FLORIDA BUILDING CODE WITH THE 2009 SUPPLEMENTS.

CRAIG E. GUNDERSON, P.E. #060102 DATE

GulfCoast Engineering, LLC
 CERTIFICATE OF AUTHORIZATION #9910
 703 CAPE CORAL PARKWAY W. STE 201
 CAPE CORAL, FL 33914
 PH: 239-458-6633 FAX: 239-458-6733

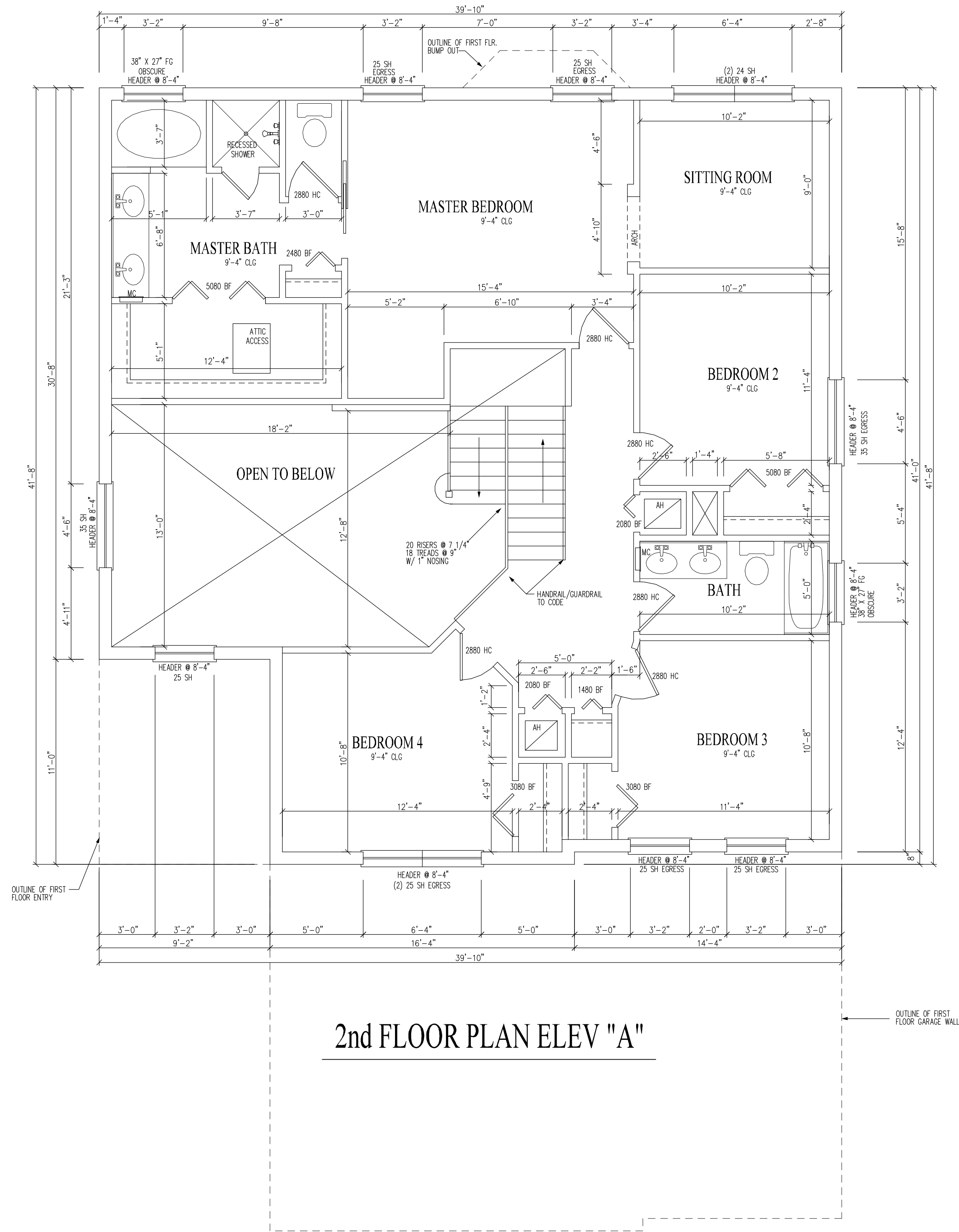
STANDARD PACIFIC HOMES OF FLORIDA
 405 N. REO STREET, SUITE 330
 TAMPA, FLORIDA 33609
 PH: 813.288.7767
 F: 813.288.7689

PROJECT:
 DRAKE MODEL
 ELEVATION A

© 2010 COPYRIGHT GULFCOAST ENGINEERING, LLC

SCALE: 1/4" = 1'
 *UNLESS NOTED OTHERWISE
 PRELIM: 08/24/10
 REV: 11/09/10

1ST FLOOR PLAN
 A-2.1A



2nd FLOOR PLAN ELEV "A"

I HEREBY CERTIFY AS THE BUILDING DESIGN ENGINEER OF RECORD, THAT THE BUILDING DESIGN AS SHOWN ON THESE PLANS (STRUCTURAL COMPLIANCE ONLY) AND AS ACCOMPANIED BY THESE PLANS AND SUPPLEMENTAL DOCUMENTS, IS IN ACCORDANCE WITH THE 2007 FLORIDA BUILDING CODE, RESIDENTIAL AND THE 2007 FLORIDA BUILDING CODE, TRUSS DESIGN. THIS CERTIFICATION DOES NOT INCLUDE ROOF COMPONENTS OF WHICH THE TRUSS DESIGN ENGINEER IS THE ENGINEER OF RECORD. PLANS HAVE BEEN PREPARED IN COMPLIANCE WITH THE 2007 FLORIDA BUILDING CODE WITH THE 2009 SUPPLEMENTS.

CRAIG E. GUNDERSON, P.E. #060102 DATE

GulCoast Engineering, LLC

CERTIFICATE OF AUTHORIZATION #9910
 703 CAPE CORAL PARKWAY W. STE 201
 CAPE CORAL, FL 33914
 PH: 239-458-6633 FAX: 239-458-6733

STANDARD PACIFIC HOMES OF FLORIDA

405 N. REO STREET, SUITE 330
 TAMPA, FLORIDA 33609

PH: 813.288.7767
 F: 813.288.7689

PROJECT:

**DRAKE MODEL
 ELEVATION A**

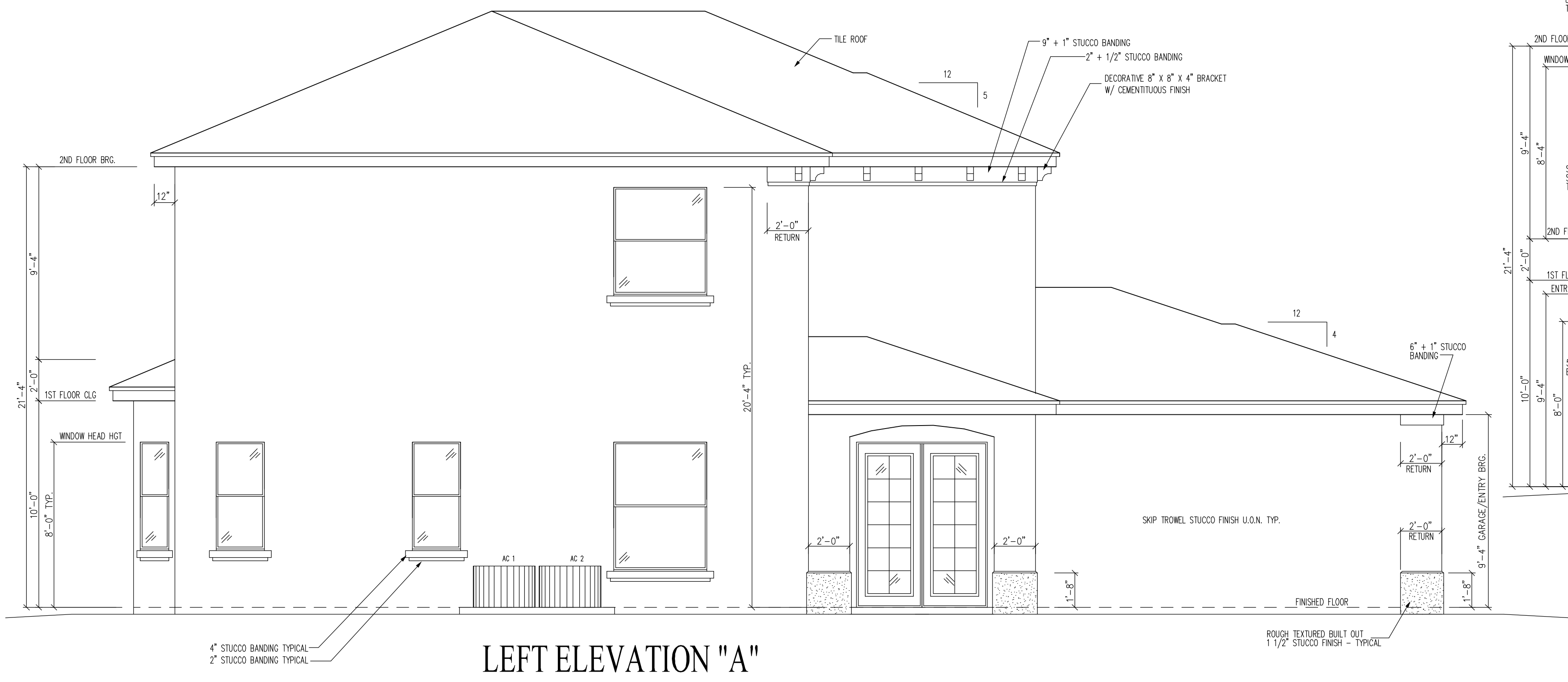
SCALE: 1/4" = 1'
 UNLESS NOTED OTHERWISE

PRELIM: 08/24/10
 REV: 11/09/10

© 2010 COPYRIGHT GULF COAST ENGINEERING, LLC

2ND FLOOR PLAN

A-2.2A



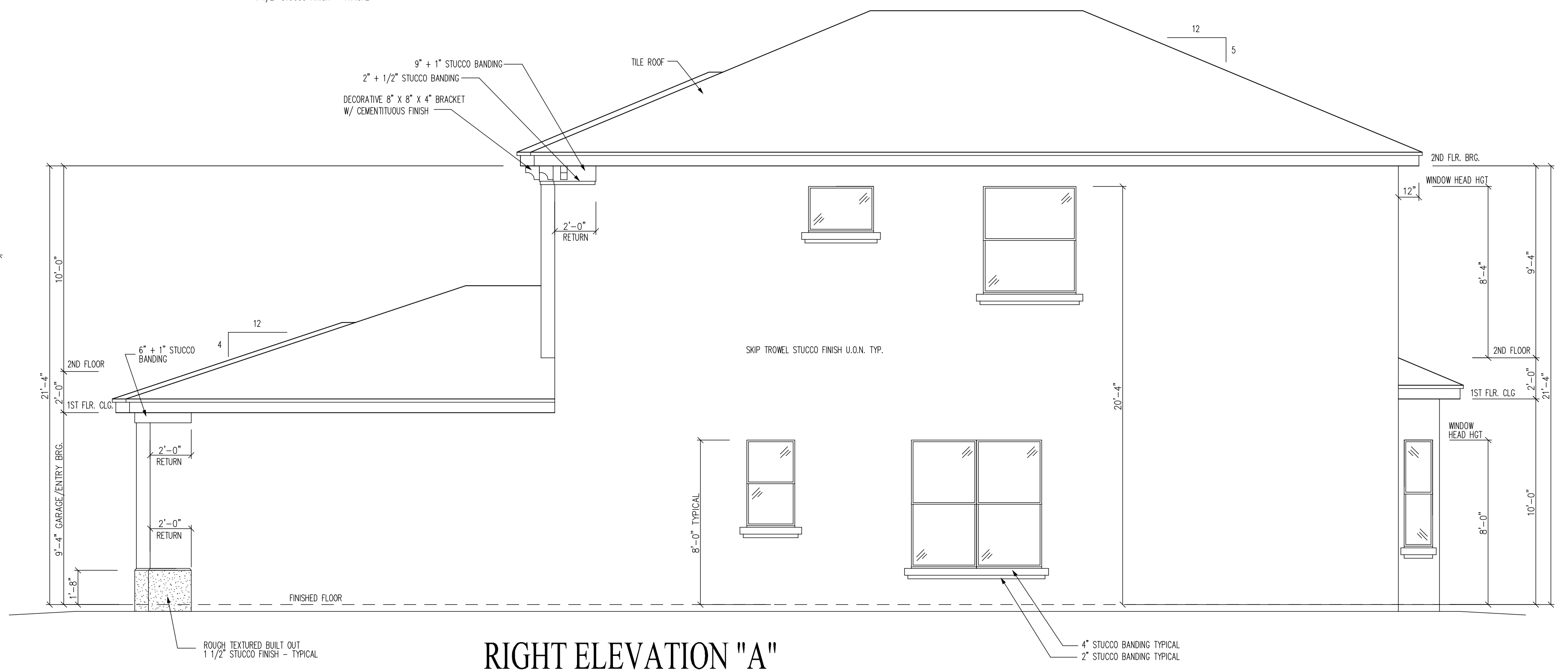
LEFT ELEVATION "A"



FRONT ELEVATION "A"



REAR ELEVATION "A"



RIGHT ELEVATION "A"

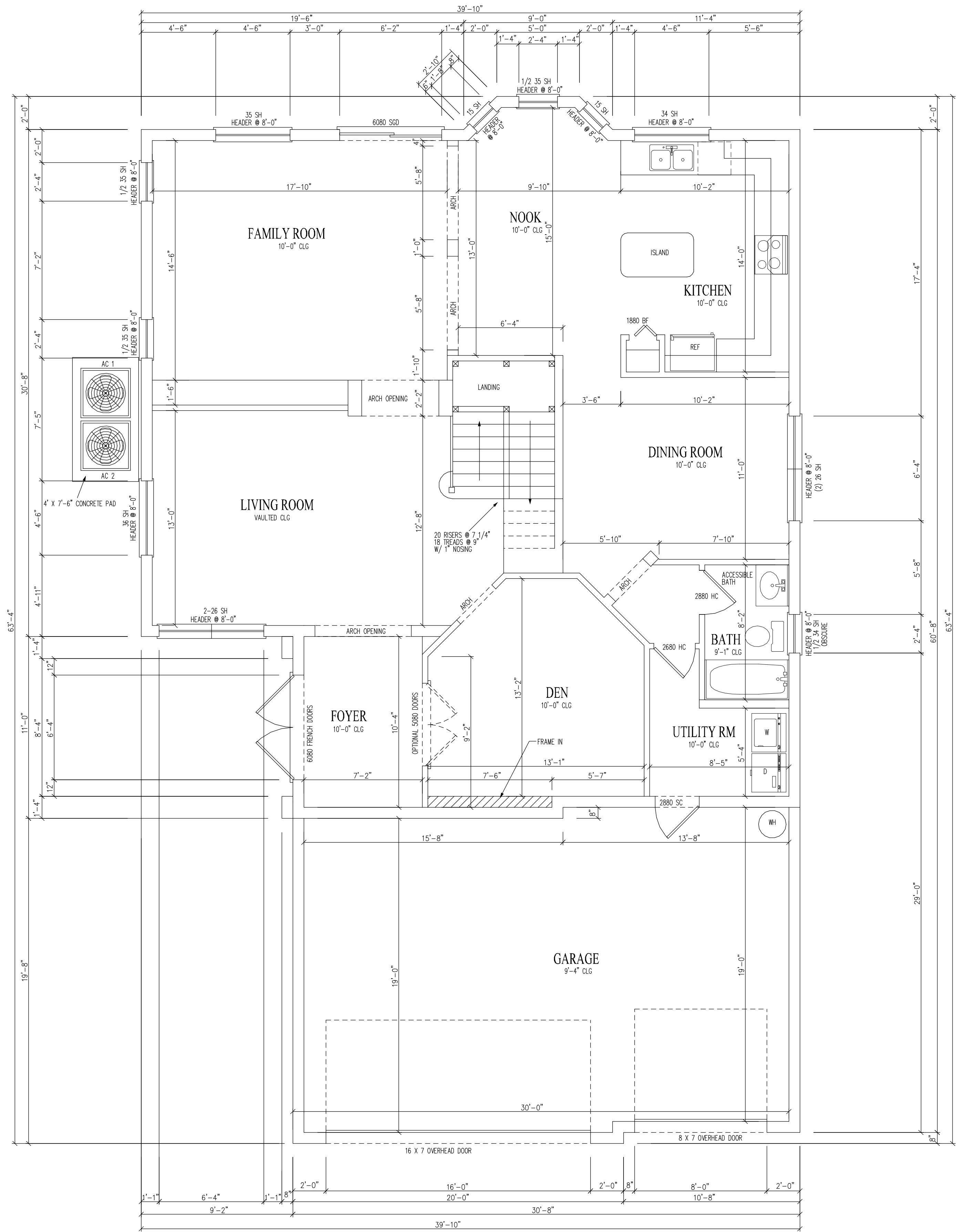
I HEREBY CERTIFY AS THE BUILDING DESIGN ENGINEER OF RECORD, THAT THE BUILDING DESIGN AS SHOWN ON THESE PLANS (STRUCTURAL COMPLIANCE ONLY) AND AS ACCOMPANIED BY DESIGN AND SPECIFICATION DOCUMENTS, MEETS ALL REQUIREMENTS OF THE 2007 FLORIDA BUILDING CODE RESIDENTIAL AND THE 2007 FLORIDA BUILDING CODE. THIS CERTIFICATION DOES NOT INCLUDE ROOF COMPONENTS OF WHICH THE TRUSS DESIGN ENGINEER IS THE ENGINEER OF RECORD. PLANS HAVE BEEN PREPARED IN COMPLIANCE WITH THE 2007 FLORIDA BUILDING CODE WITH THE 2009 SUPPLEMENTS.
 CRAIG E. GUNDERSON, P.E. #060102 DATE

GulfCoast Engineering, LLC
 CERTIFICATE OF AUTHORIZATION #9910
 703 CAPE CORAL PARKWAY W. STE 201
 CAPE CORAL, FL 33914
 PH: 239-458-6633 FAX: 239-458-6733

STANDARD PACIFIC HOMES OF FLORIDA
 PROJECT: **DRAKE MODEL ELEVATION A**
 405 N. REO STREET, SUITE 330
 TAMPA, FLORIDA 33609
 PH: 813.288.7767
 F: 813.288.7689

SCALE: 1/4" = 1'
 UNLESS NOTED OTHERWISE
 PRELIM: 08/24/10
 REV: 11/09/10

ELEVATIONS
A-3.0A



1st FLOOR PLAN ELEV. "B"

SQUARE FOOTAGES	
1ST FLOOR LIVING	1563
2ND FLOOR LIVING	1549
GARAGE	606
TOTAL	3718

A.C NOTE:
 ALL A.C. UNITS ARE TO BE ON LEFT SIDE OF LOT REGARDLESS OF HOUSE ORIENTATION

I HEREBY CERTIFY AS THE BUILDING DESIGN ENGINEER OF RECORD, THAT THE BUILDING DESIGN AS SHOWN ON THESE PLANS (STRUCTURAL COMPLIANCE ONLY) AND AS ACCOMPANIED BY DESIGN AND SUPPORT DOCUMENTS (FOUNDATION, MECHANICAL, ELECTRICAL, PLUMBING, AND FIRE) IS IN ACCORDANCE WITH THE FLORIDA BUILDING CODE, RESIDENTIAL AND THE 2007 FLORIDA BUILDING CODE. THIS CERTIFICATION DOES NOT INCLUDE ROOF COMPONENTS OF WHICH THE TRUSS DESIGN ENGINEER IS THE ENGINEER OF RECORD. PLANS HAVE BEEN PREPARED IN COMPLIANCE WITH THE 2007 FLORIDA BUILDING CODE WITH THE 2009 SUPPLEMENTS.

CRAIG E. GUNDERSON, P.E. #060102 DATE

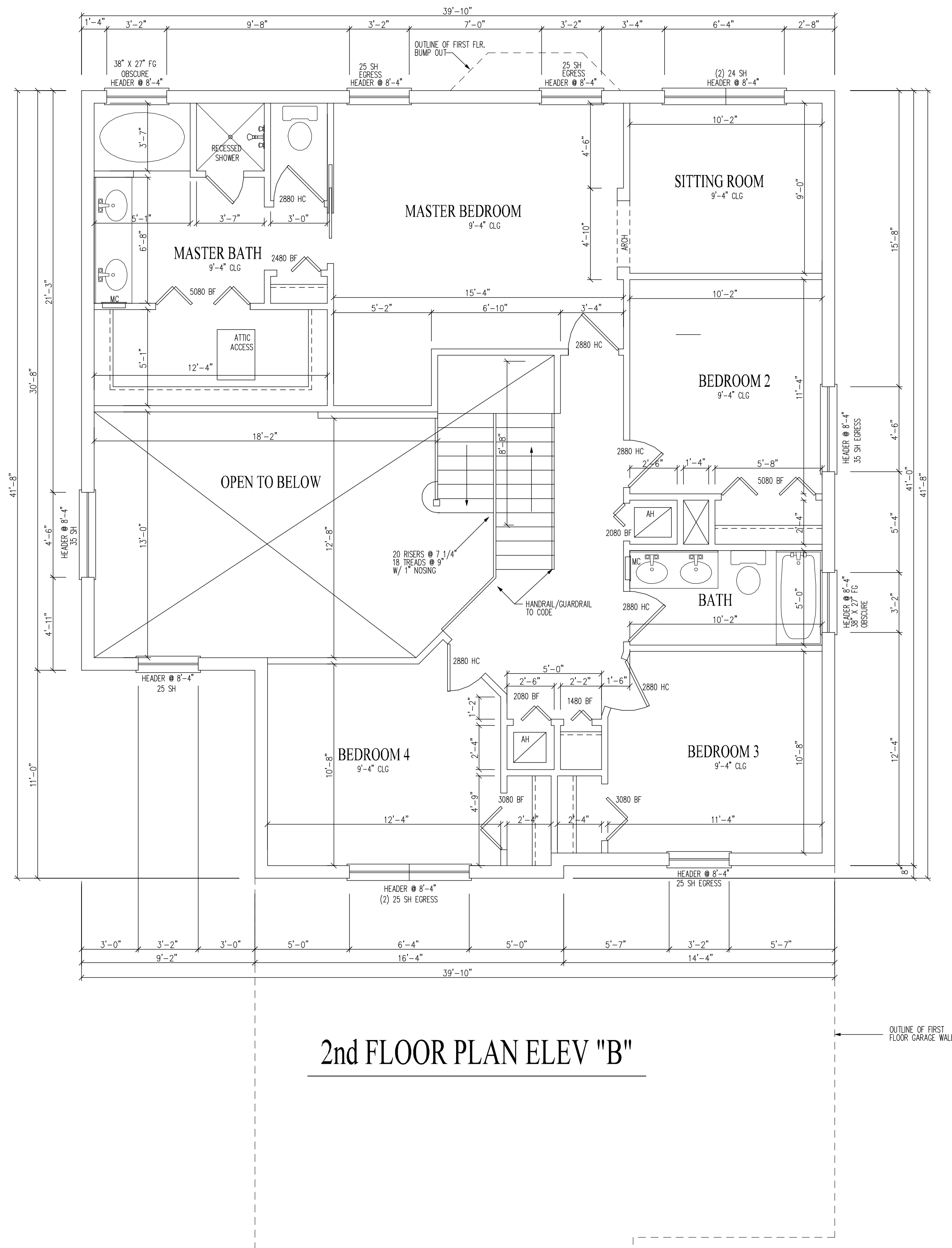
GCE
 GulfCoast Engineering, LLC
 CERTIFICATE OF AUTHORIZATION #9910
 703 CAPE CORAL PARKWAY W. SITE 201
 CAPE CORAL, FL 33914
 PH: 239-458-6633 FAX: 239-458-6733

STANDARD PACIFIC HOMES OF FLORIDA
 405 N. REO STREET, SUITE 330
 TAMPA, FLORIDA 33609
 PH: 813.288.7767
 F: 813.288.7689

PROJECT:
 DRAKE MODEL
 ELEVATION B

SCALE: 1/4" = 1'
 UNLESS NOTED OTHERWISE
 PRELIM: 08/24/10
 REV: 11/09/10

© 2010 COPYRIGHT GULF COAST ENGINEERING, LLC



2nd FLOOR PLAN ELEV "B"

OUTLINE OF FIRST FLOOR GARAGE WALL

PROJECT:

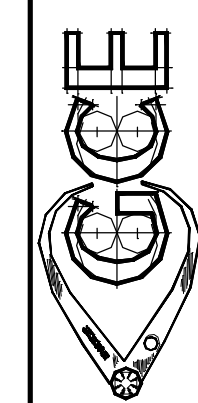
DRAKE MODEL
ELEVATION B

2ND FLOOR PLAN

A-2.2B

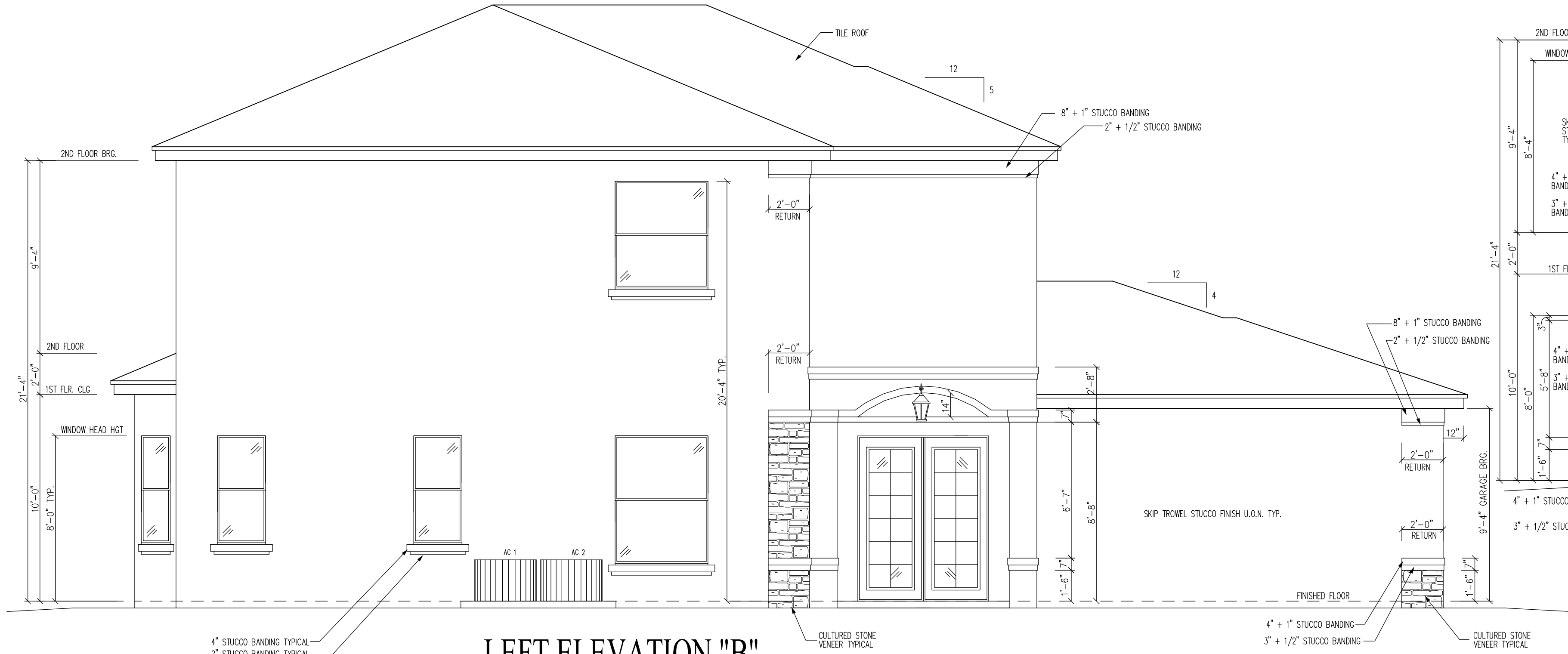
SCALE: 1/4" = 1'
UNLESS NOTED OTHERWISE
PRELIM: 08/24/10
REV: 11/09/10

STANDARD PACIFIC HOMES
OF FLORIDA
405 N. REO STREET, SUITE 330
TAMPA, FLORIDA 33609



GulfCoast Engineering, LLC
CERTIFICATE OF AUTHORIZATION #9910
703 CAPE CORAL PARKWAY W. SITE 201
CAPE CORAL, FL 33914
PH: 239-458-6633 FAX: 239-458-6733

I HEREBY CERTIFY AS THE BUILDING DESIGN ENGINEER OF RECORD, THAT THE BUILDING DESIGN AS SHOWN ON THESE PLANS (STRUCTURAL COMPLIANCE ONLY) AND AS ACCOMPANIED BY DESIGN AND SUPPORT DOCUMENTS (FOUNDATION, MECHANICAL, ELECTRICAL, PLUMBING, AND ROOFING) COMPLY WITH THE FLORIDA BUILDING CODE RESIDENTIAL AND THE 2007 FLORIDA BUILDING CODE. THIS CERTIFICATION DOES NOT INCLUDE ROOF COMPONENTS OF WHICH THE TRUSS DESIGN ENGINEER IS THE ENGINEER OF RECORD. PLANS HAVE BEEN PREPARED IN COMPLIANCE WITH THE 2007 FLORIDA BUILDING CODE WITH THE 2009 SUPPLEMENTS.
CRAIG E. GUNDERSON, P.E. #060102 DATE



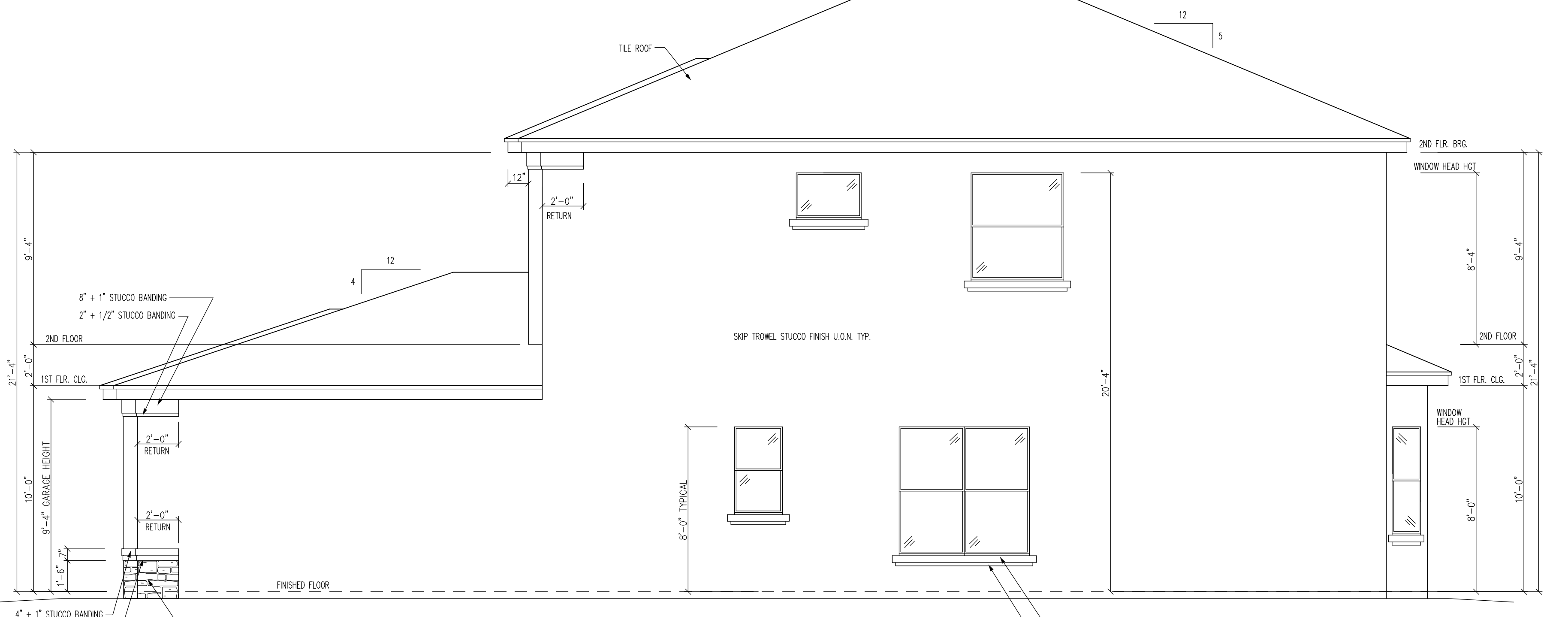
LEFT ELEVATION "B"



FRONT ELEVATION "B"



REAR ELEVATION "B"



RIGHT ELEVATION "B"

I HEREBY CERTIFY AS THE BUILDING DESIGN ENGINEER OF RECORD, THAT THE BUILDING DESIGN AS SHOWN ON THESE PLANS (STRUCTURAL COMPLIANCE ONLY) AND AS ACCOMPANIED BY DESIGN AND SUPPORT DOCUMENTS (FOUNDATION, MECHANICAL, ELECTRICAL, PLUMBING, AND FIRE) IS IN ACCORDANCE WITH THE FLORIDA BUILDING CODE RESIDENTIAL AND THE 2007 FLORIDA BUILDING CODE. THIS CERTIFICATION DOES NOT INCLUDE ROOF COMPONENTS OF WHICH THE TRUSS DESIGN ENGINEER IS THE ENGINEER OF RECORD. PLANS HAVE BEEN PREPARED IN COMPLIANCE WITH THE 2007 FLORIDA BUILDING CODE WITH THE 2009 SUPPLEMENTS.

CRAIG E. GUNDERSON, P.E. #060102 DATE

GCE
GulfCoast Engineering, LLC
 CERTIFICATE OF AUTHORIZATION #9910
 703 CAPE CORAL PARKWAY W. STE 201
 CAPE CORAL, FL 33914
 PH: 239-458-6633 FAX: 239-458-6733

STANDARD PACIFIC HOMES OF FLORIDA
 PROJECT: **DRAKE MODEL ELEVATION B**
 405 N. REO STREET, SUITE 330
 TAMPA, FLORIDA 33609
 PH: 813.288.7767
 F: 813.288.7689

SCALE: 1/4" = 1'
 UNLESS NOTED OTHERWISE
 PRELIM: 08/24/10
 REV: 11/09/10

ELEVATIONS
A-3.0B