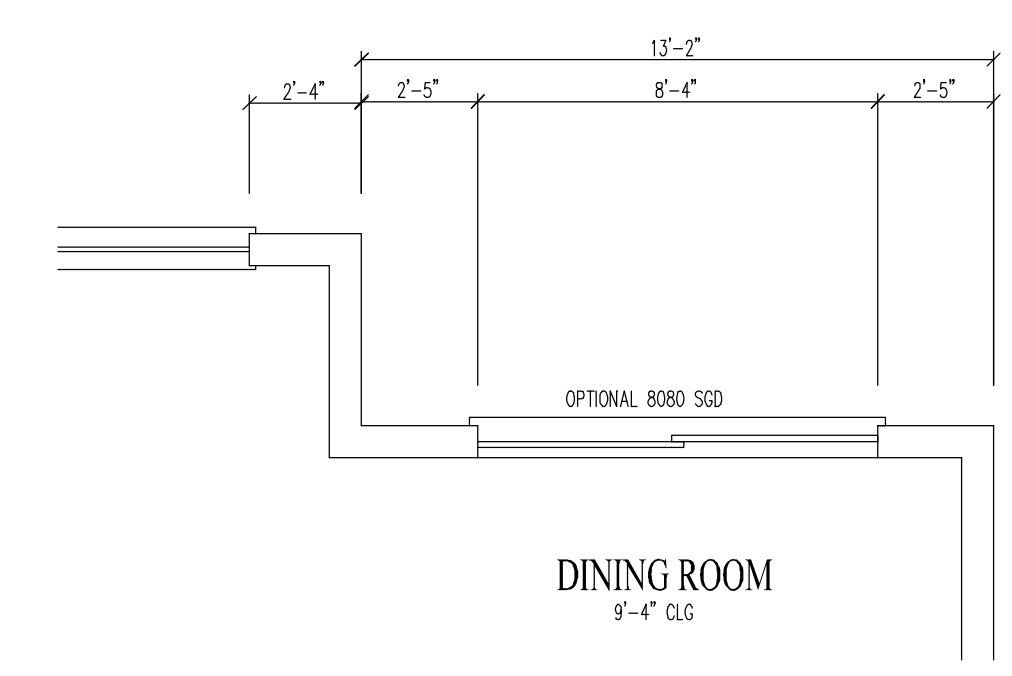
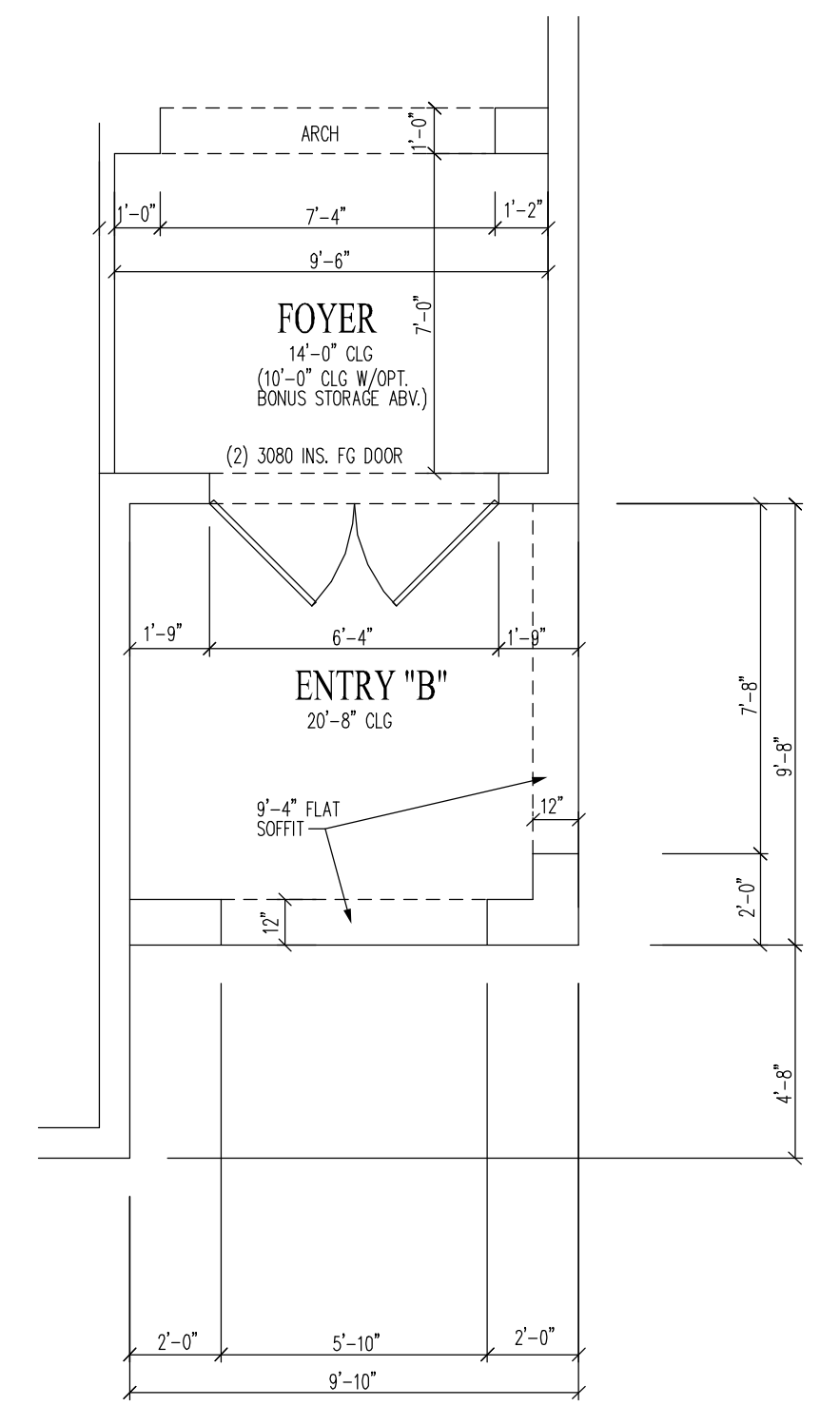


1st FLOOR PLAN "A"



OPTIONAL SGD @ DINING ROOM

A.C. NOTE:
 ALL A.C. UNITS ARE TO BE ON LEFT SIDE OF LOT REGARDLESS OF HOUSE ORIENTATION



ENTRY "B" 1ST FLOOR PLAN

SQUARE FOOTAGES	
1ST FLOOR LIVING	1735
2ND FLOOR LIVING	1851
GARAGE	639
ENTRY "A"	82
BALCONY	72
TOTAL W/ ENTRY "A"	4379
OPTIONAL ENTRY "B"	95
OPTIONAL "C" BALCONY	72
OPTIONAL BONUS STORAGE	85

I HEREBY CERTIFY AS THE BUILDING DESIGN ENGINEER OF RECORD, THAT THE BUILDING DESIGN AS SHOWN ON THESE PLANS (STRUCTURAL COMPLIANCE ONLY) AND AS ACCOMPANIED BY DESIGN AND SUPPORT DOCUMENTS CONFORMS TO SECTION R3011.3, R3012.1, AND R3012.1.2 OF THE 2007 CODE. THIS CERTIFICATION DOES NOT INCLUDE ROOF COMPONENTS OF WHICH THE TRUSS DESIGN ENGINEER IS THE ENGINEER OF RECORD. PLANS HAVE BEEN PREPARED IN COMPLIANCE WITH THE 2007 FLORIDA BUILDING CODE WITH THE 2009 SUPPLEMENTS.

CRAIG E. GUNDERSON, P.E. #060102 DATE

GulfCoast Engineering, LLC
 CERTIFICATE OF AUTHORIZATION #9910
 703 CAPE CORAL PARKWAY W. SITE 201
 CAPE CORAL, FL 33914
 PH: 239-458-6633 FAX: 239-458-6783

STANDARD PACIFIC HOMES OF FLORIDA
 405 N. REO STREET, SUITE 330
 TAMPA, FLORIDA 33609
 PH: 813.288.7767
 F: 813.288.7689

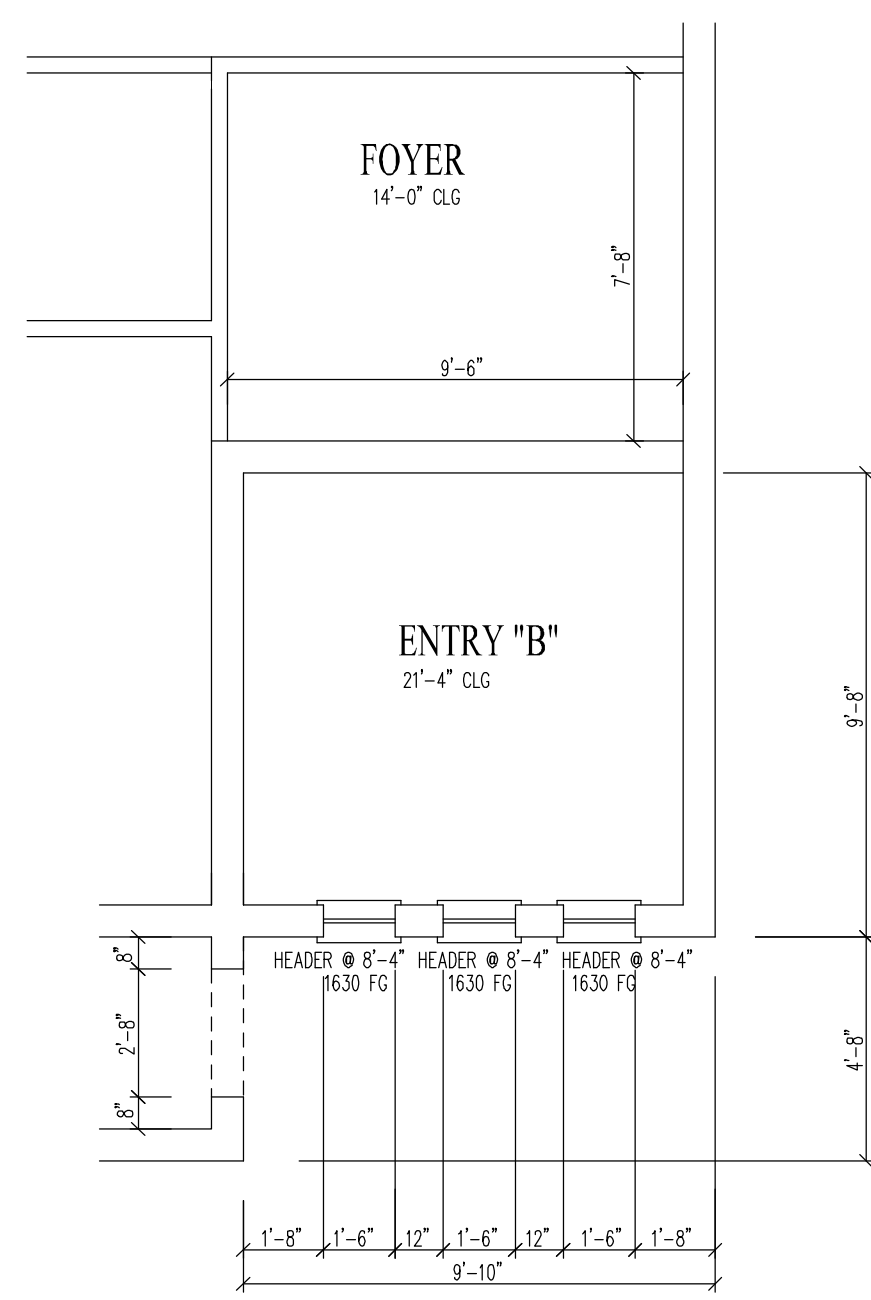
PROJECT:
 MODENA ELEVATION A

© 2010 COPYRIGHT GULFCOAST ENGINEERING, LLC

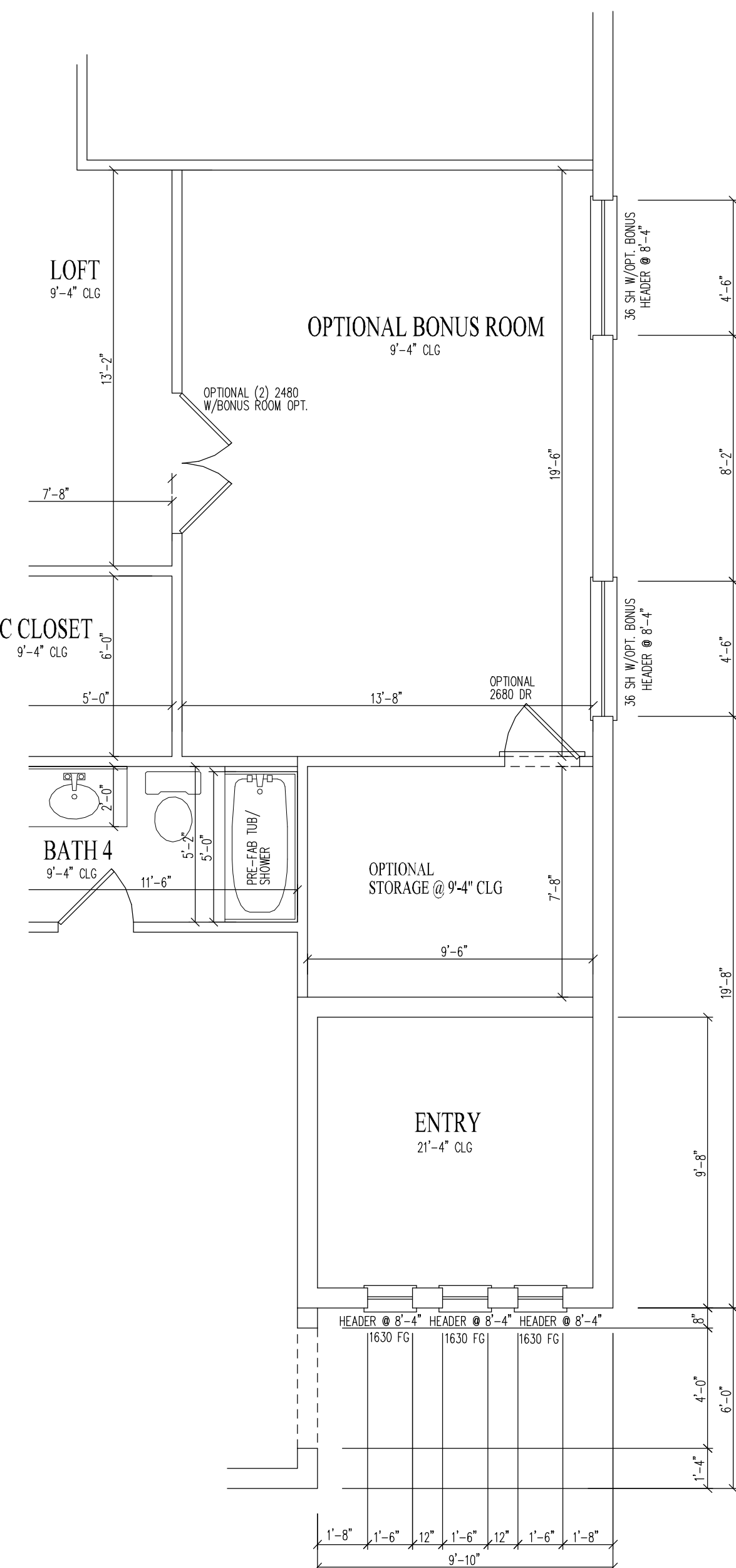
ADMINISTRATIVE APPROVAL 12/02/10
APPROVED

SCALE: 1/4" = 1'
 UNLESS NOTED OTHERWISE
 DATE: 08/26/10
 REV: 11/09/10
 REV: 11/12/10

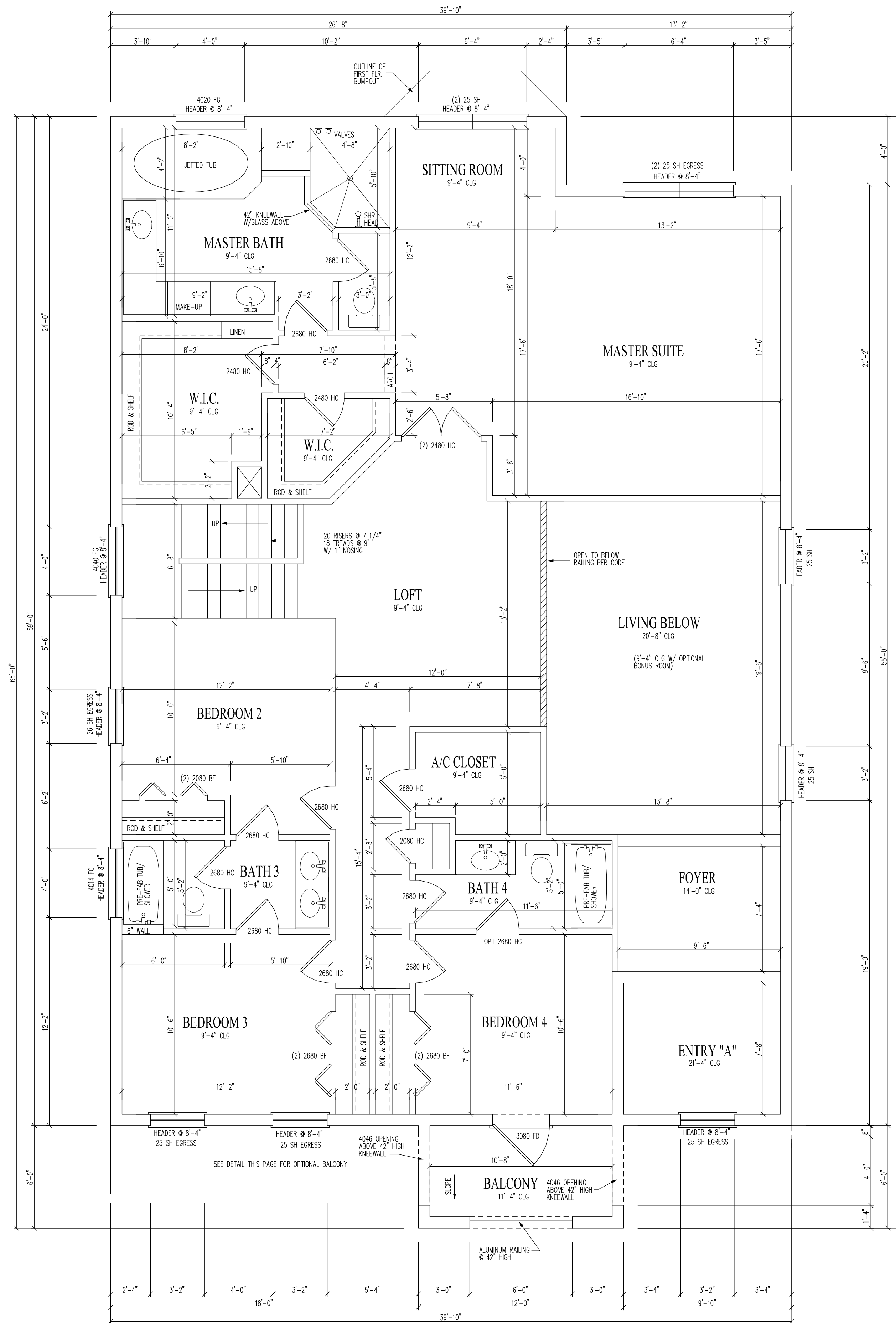
1ST FLOOR PLAN
 A-2.1A



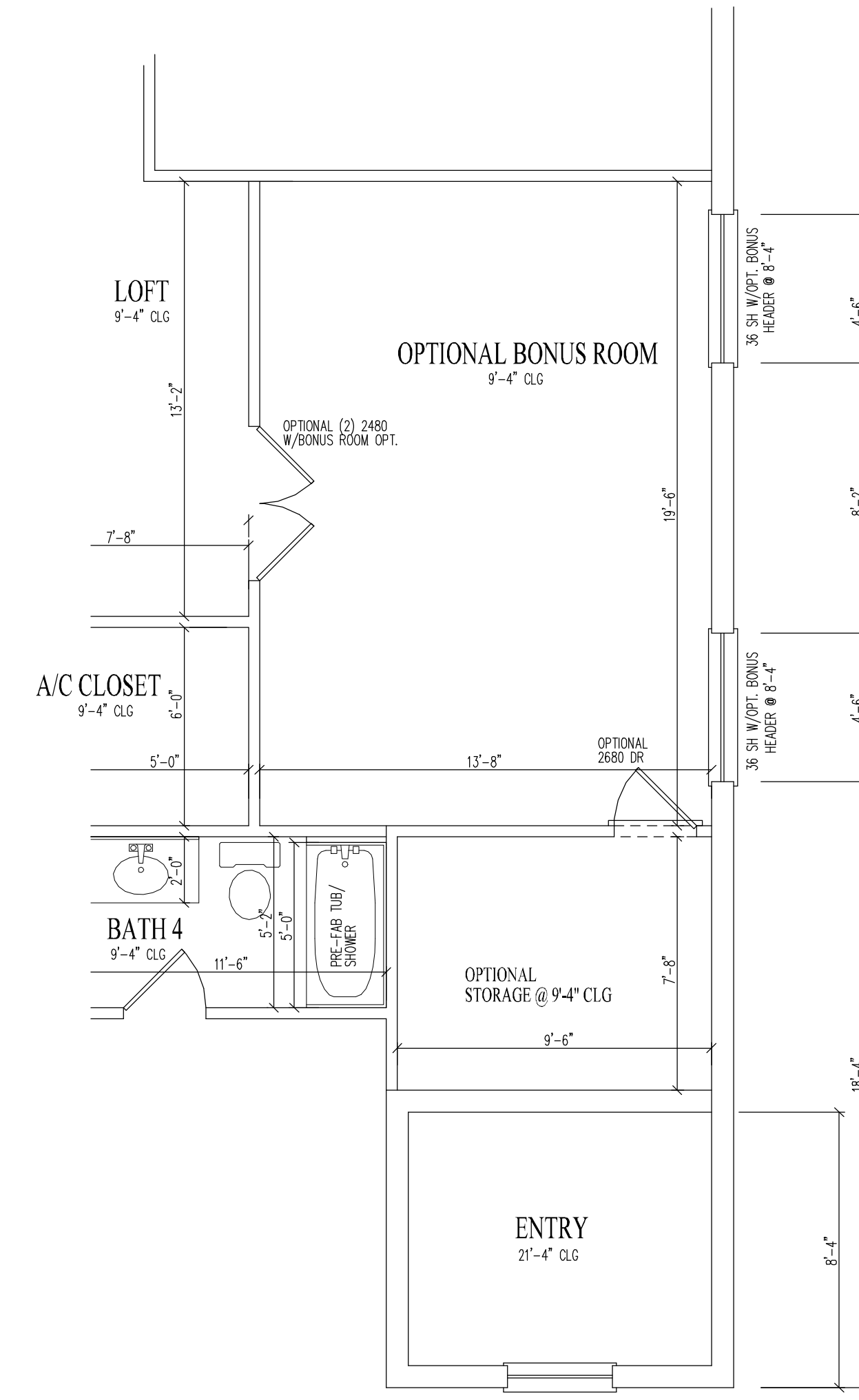
ENTRY "B" 2ND FLOOR PLAN



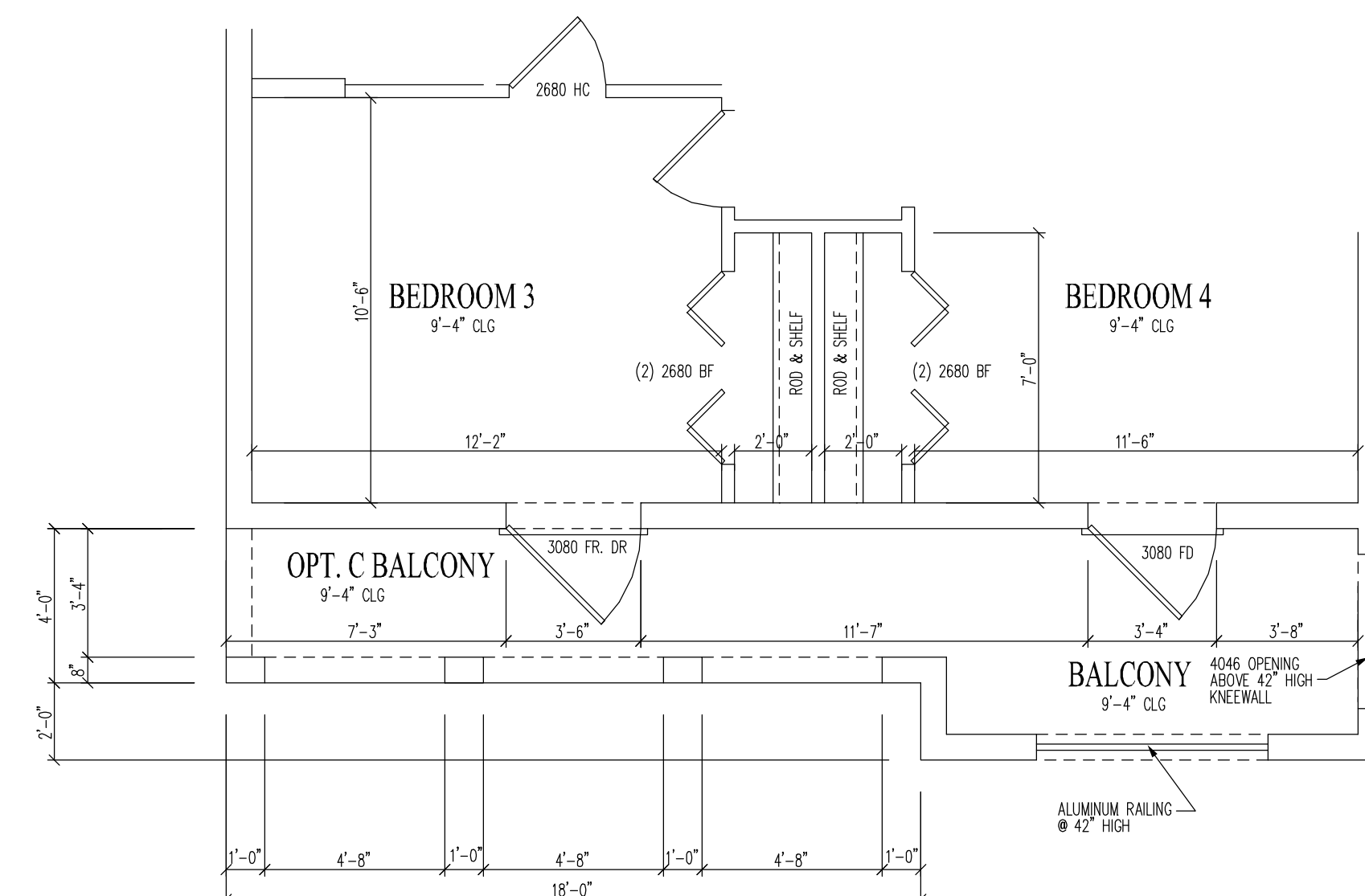
OPTIONAL BONUS ROOM "B"



2nd FLOOR PLAN "A"



OPTIONAL BONUS ROOM "A"



OPTIONAL "C" BALCONY

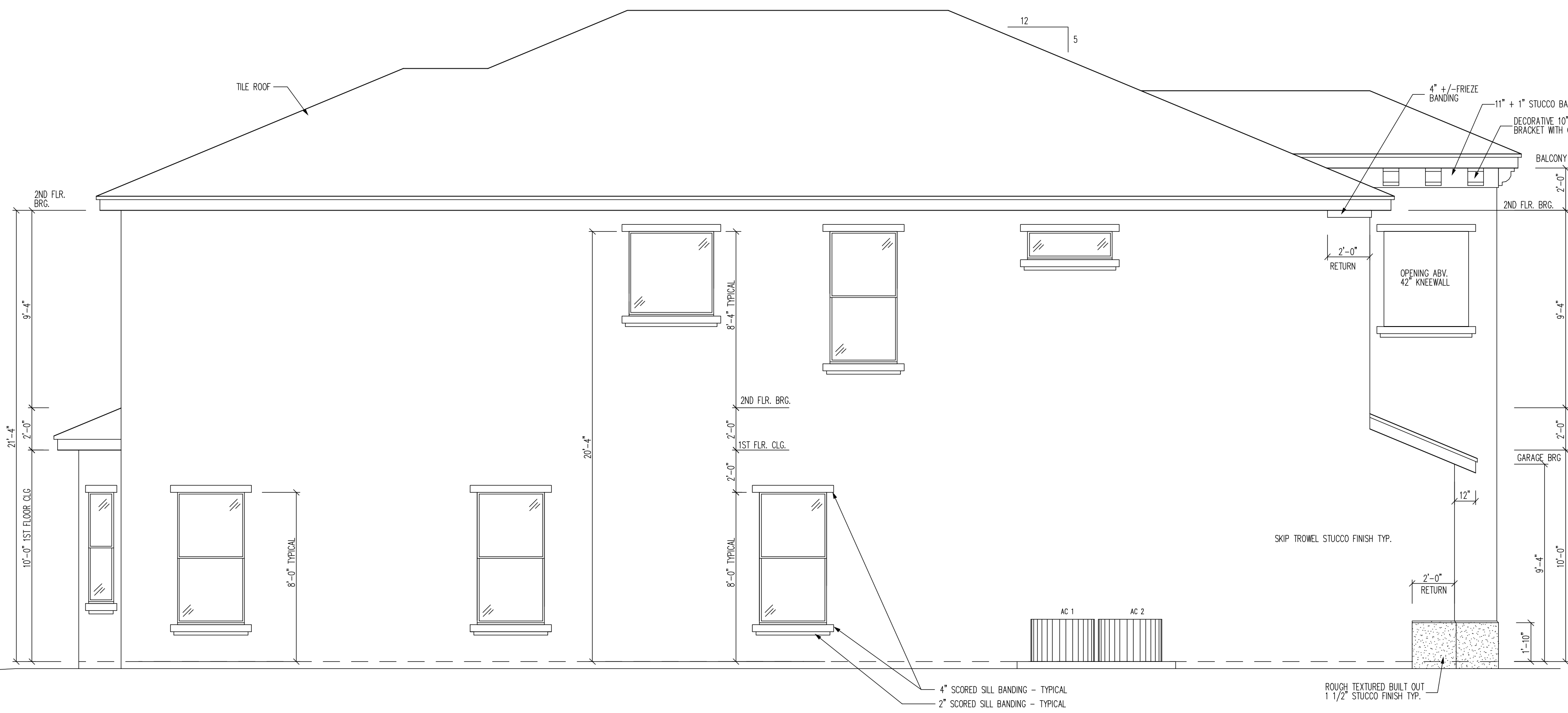
I HEREBY CERTIFY AS THE BUILDING DESIGN ENGINEER OF RECORD, THAT THE BUILDING DESIGN AS SHOWN ON THESE PLANS (STRUCTURAL COMPLIANCE ONLY) AND AS ACCOMPANIED BY DESIGN AND SUPPORT DOCUMENTS CONFORMS TO SECTION R301.1.3, R301.2.1, AND R301.2.1.2 OF THE 2007 CODE. THIS CERTIFICATION DOES NOT INCLUDE ROOF COMPONENTS OF WHICH THE TRUSS DESIGN ENGINEER IS THE ENGINEER OF RECORD. PLANS HAVE BEEN PREPARED IN COMPLIANCE WITH THE 2007 FLORIDA BUILDING CODE WITH THE 2009 SUPPLEMENTS.

GulfCoast Engineering, LLC
 CERTIFICATE OF AUTHORIZATION #9910
 703 CAPE CORAL PARKWAY W. SITE 201
 CAPE CORAL, FL 33914
 PH: 239-458-6633 FAX: 239-458-6783

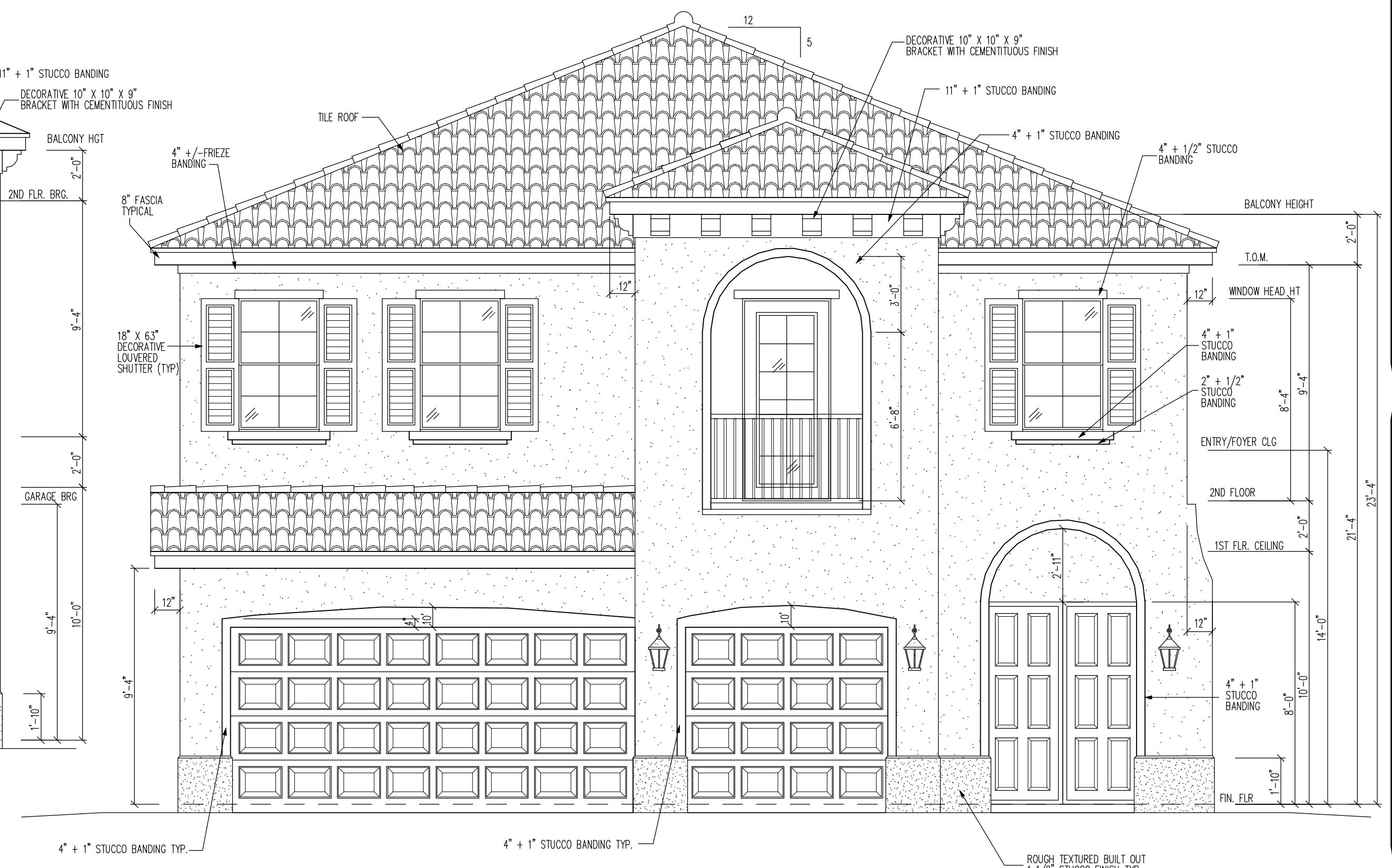
STANDARD PACIFIC HOMES OF FLORIDA
 405 N. RFO STREET, SUITE 330
 TAMPA, FLORIDA 33609
 PH: 813.288.7767
 F: 813.288.7689

PROJECT: MODENA ELEVATION A
 SCALE: 1/4" = 1'
 UNLESS NOTED OTHERWISE
 PRELIM: 08/26/10
 REV: 11/09/10
 REV: 11/12/10

2ND FLOOR PLAN
A-2.2A



LEFT ELEVATION "A"



FRONT ELEVATION "A"



REAR ELEVATION "A"



RIGHT ELEVATION "A"

I HEREBY CERTIFY AS THE BUILDING DESIGN ENGINEER OF RECORD, THAT THE BUILDING DESIGN AS SHOWN ON THESE PLANS (STRUCTURAL COMPLIANCE ONLY) AND AS ACCOMPANIED BY DESIGN AND SUPPORT DOCUMENTS CONFORMS TO SECTION F3011.3, F3012.1, AND F3012.1.2 OF THE 2007 CODE. THIS CERTIFICATION DOES NOT INCLUDE ROOF COMPONENTS OF WHICH THE TRUSS DESIGN ENGINEER IS THE ENGINEER OF RECORD. PLANS HAVE BEEN PREPARED IN COMPLIANCE WITH THE 2007 FLORIDA BUILDING CODE WITH THE 2009 SUPPLEMENTS.

CRAIG E. GUNDERSON, P.E. #060102 DATE

GulfCoast Engineering, LLC

CERTIFICATE OF AUTHORIZATION #9910
 703 CAPE CORAL PARKWAY W. SITE 201
 CAPE CORAL, FL 33914
 PH: 239-458-6633 FAX: 239-458-6733

STANDARD PACIFIC HOMES OF FLORIDA

405 N. REO STREET, SUITE 330
 TAMPA, FLORIDA 33609

PH: 813.288.7767
 F: 813.288.7689

PROJECT:
 MODENA
 ELEVATION A

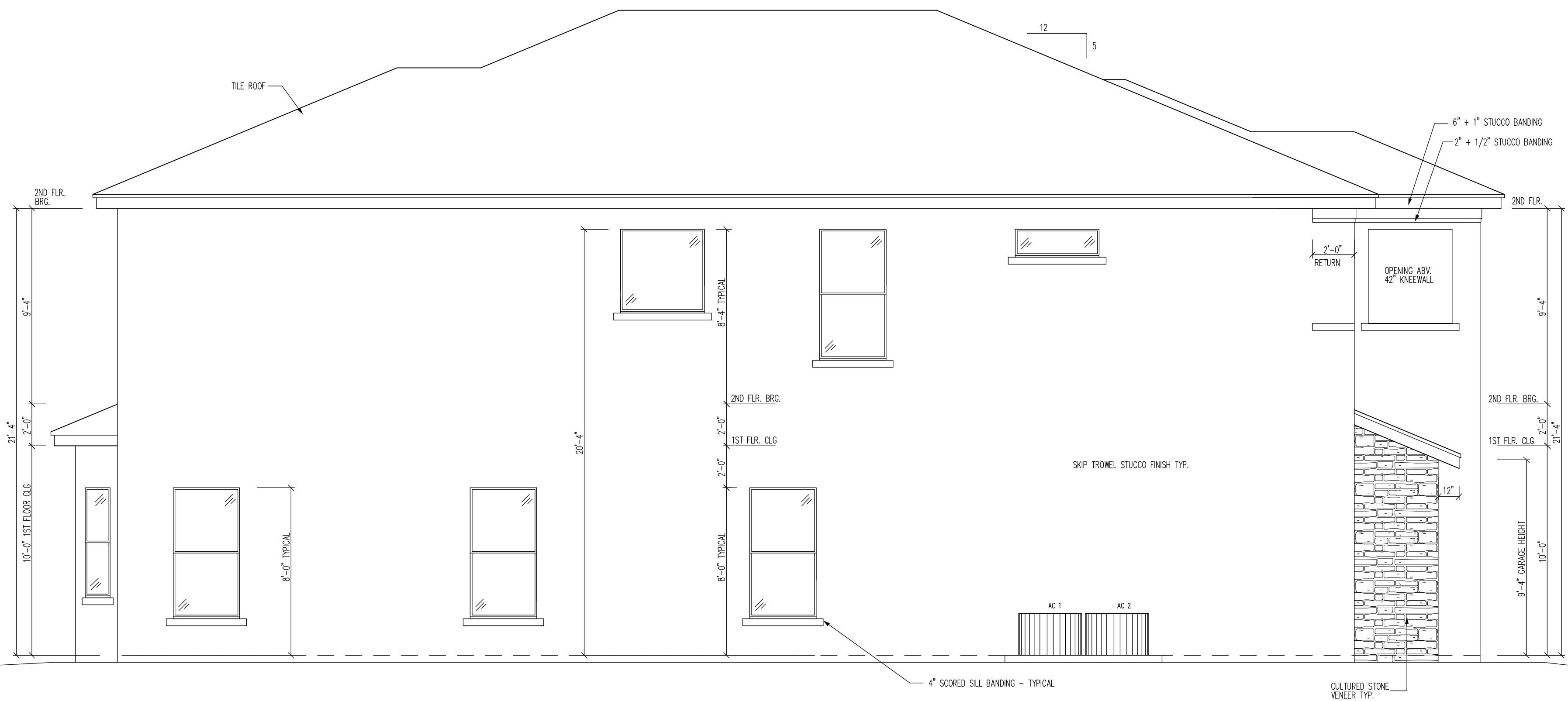
SCALE: 1/4" = 1'
 UNLESS NOTED OTHERWISE

PRELIM: 08/26/10
 REV: 11/09/10
 REV: 11/12/10

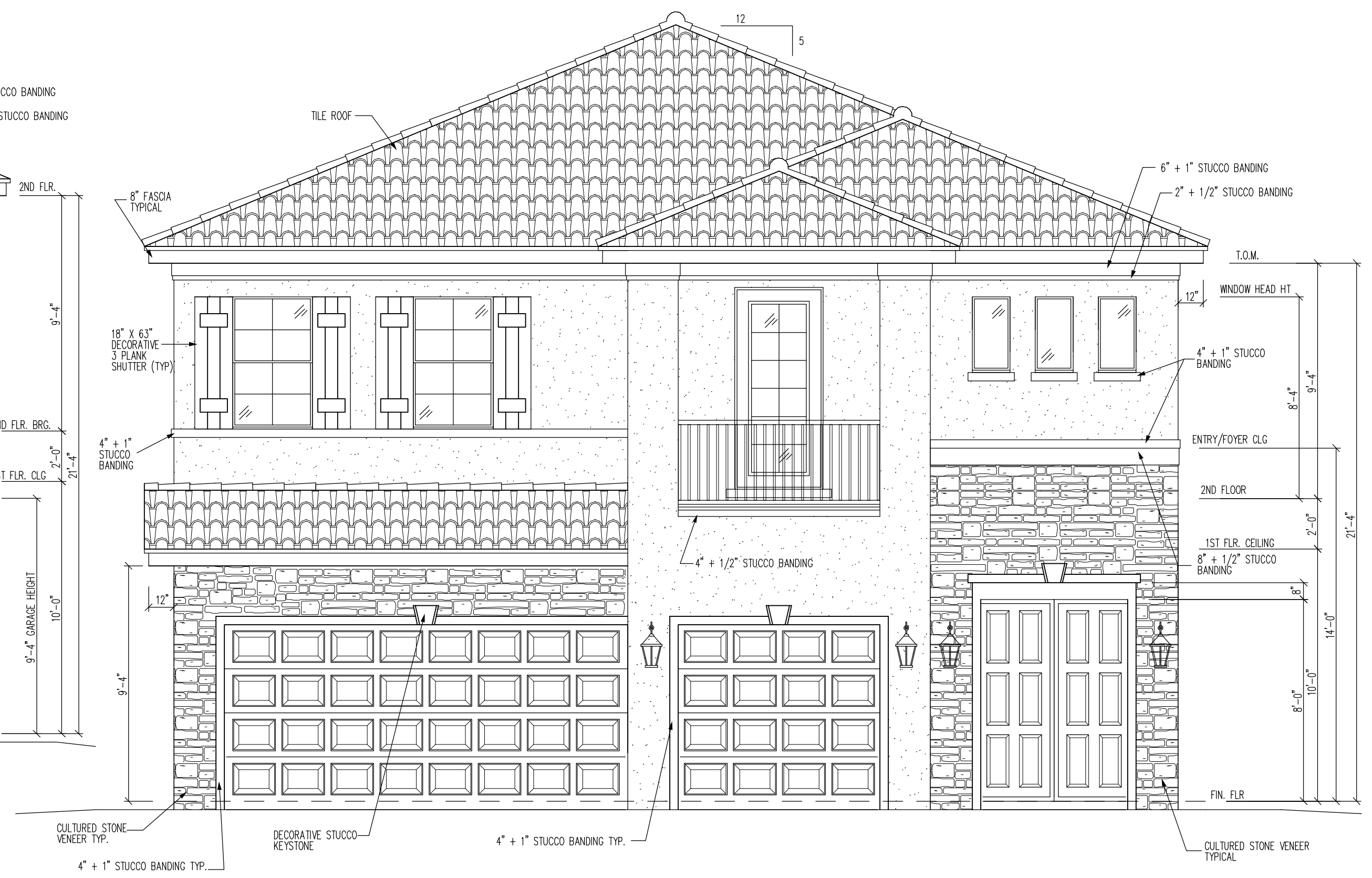
© 2010 COPYRIGHT GULFCOAST ENGINEERING, LLC

ELEVATIONS

A-3.0A



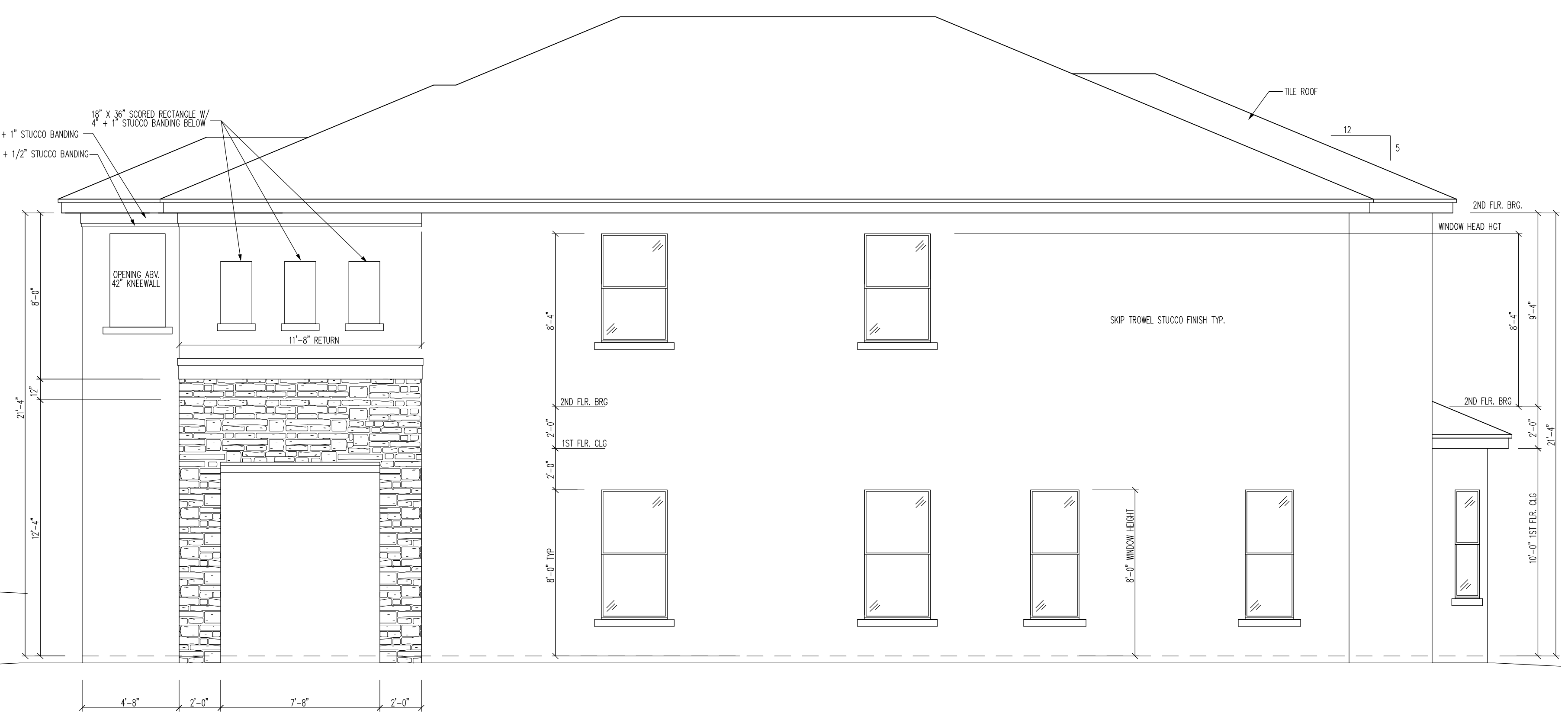
LEFT ELEVATION "B"



FRONT ELEVATION "B"



REAR ELEVATION "B"



RIGHT ELEVATION "B"

THE ENGINEER HAS PREPARED THIS DESIGN IN COMPLIANCE WITH THE 2007 FLORIDA BUILDING CODE WITH THE 2009 SUPPLEMENTS. THIS DESIGN ENGINEER IS THE ENGINEER OF RECORD. PLANS HAVE BEEN PREPARED IN COMPLIANCE WITH THE 2007 FLORIDA BUILDING CODE WITH THE 2009 SUPPLEMENTS.

HEREBY CERTIFY AS THE BUILDING DESIGN ENGINEER OF RECORD, THAT THE BUILDING DESIGN AS SHOWN ON THESE PLANS (STRUCTURAL COMPLIANCE ONLY) AND AS ACCOMPANIED BY DESIGN AND SUPPORT DOCUMENTS CONFORMS TO SECTION R301.1.3, R301.2.1, AND R301.2.1.2 OF THE 2007 FLORIDA BUILDING CODE RESIDENTIAL AND THE 2007 FLORIDA BUILDING CODE RESIDENTIAL SUPPLEMENTS. THE DESIGN ENGINEER HAS BEEN LICENSED IN THE STATE OF FLORIDA AND IS A MEMBER OF THE PROFESSION OF PROFESSIONAL ENGINEERS IN THE STATE OF FLORIDA.

CRAIG E. GUNDERSON, P.E. #060102 DATE

GulfCoast Engineering, LLC

CERTIFICATE OF AUTHORIZATION #0910
 708 CAPE CORAL PARKWAY W. STE 201
 CAPE CORAL, FL 33914
 PH: 239-458-6633 FAX: 239-458-6733

STANDARD PACIFIC HOMES OF FLORIDA

PROJECT: MODENA ELEVATION B

405 N. REO STREET, SUITE 330
 TAMPA, FLORIDA 33609

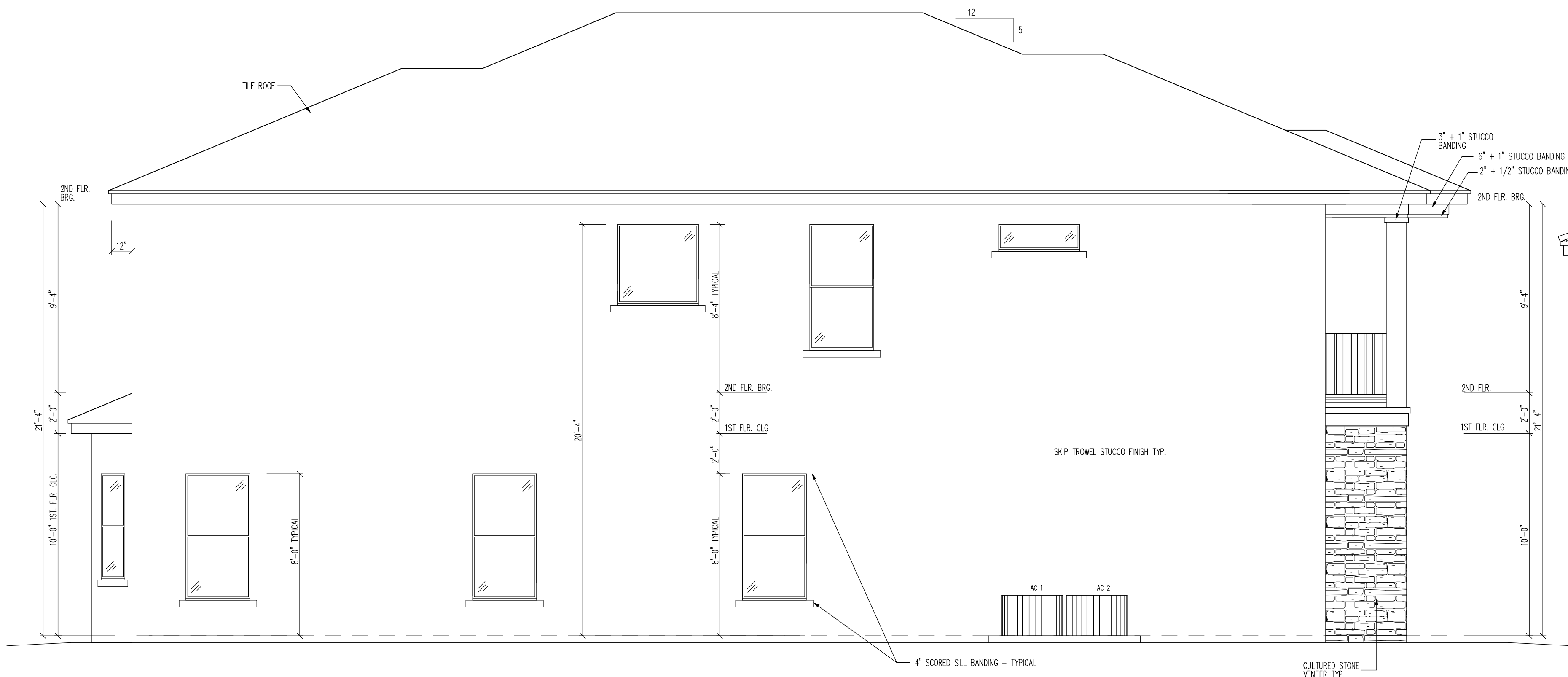
PH: 813.288.7767
 F: 813.288.7689

© 2010 COPYRIGHT GULFCOAST ENGINEERING, LLC

SCALE: 1/4" = 1'
 UNLESS NOTED OTHERWISE
 PRELIM: 08/26/10
 REV: 11/09/10

ELEVATIONS

A-3.0B



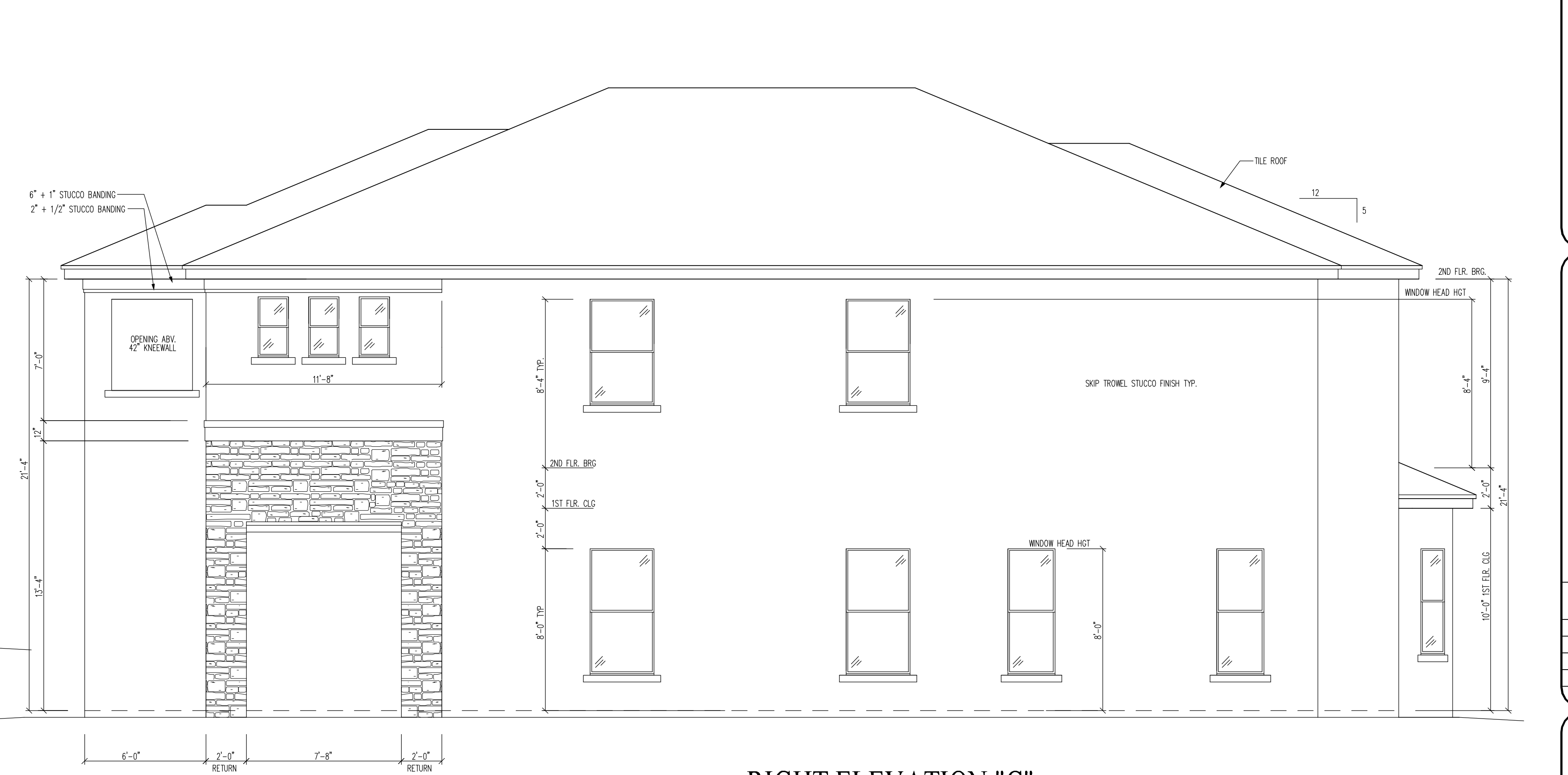
LEFT ELEVATION "C"



FRONT ELEVATION "C"



REAR ELEVATION "C"



RIGHT ELEVATION "C"

I HEREBY CERTIFY AS THE BUILDING DESIGN ENGINEER OF RECORD, THAT THE DESIGN AND CONSTRUCTION OF THIS PROJECT HAS BEEN COMPLETED IN ACCORDANCE WITH THE FLORIDA BUILDING CODE, AS AMENDED BY DESIGN AND SUPPORT DOCUMENTS ONLY, AND AS ACCOMPANIED BY DESIGN AND SUPPORT DOCUMENTS CONFORMS TO SECTION R301.1.3, R301.2.1, AND R301.2.1.2 OF THE 2007 FLORIDA BUILDING CODE RESIDENTIAL AND THE 2007 FLORIDA BUILDING CODE. THIS CERTIFICATION DOES NOT INCLUDE ROOF COMPONENTS OF WHICH THE TRUSS DESIGN ENGINEER IS THE ENGINEER OF RECORD. PLANS HAVE BEEN IN COMPLIANCE WITH THE 2007 FLORIDA BUILDING CODE WITH THE 2009 SUPPLEMENTS.

CRAIG E. GUNDERSON, P.E. #060102 DATE

GEE
GulfCoast Engineering, LLC
 CERTIFICATE OF AUTHORIZATION #9910
 703 CAPE CORAL PARKWAY W. STE. 201
 CAPE CORAL, FL 33914
 PH: 239-458-6833 FAX: 239-458-6733

STANDARD PACIFIC HOMES OF FLORIDA
 405 N. REO STREET, SUITE 330
 TAMPA, FLORIDA 33609
 PH: 813.288.7767
 F: 813.288.7689

PROJECT:
MODENA ELEVATION C
 SCALE: 1/4" = 1'
 UNLESS NOTED OTHERWISE
 PRELIM: 08/26/10
 REV: 11/09/10

ELEVATIONS
A-3.0C