

# SAN MELLINA

## SITE PLAN APPLICATION COCONUT CREEK, FLORIDA

JANUARY 2006

### INDEX OF DRAWINGS

SHEET NO.	DESCRIPTION
T-1	COVER SHEET
SP-1	SITE PLAN
S1	BOUNDARY/TOPO/TREE SURVEY (2 SHEETS)
PL-1	PLAT COVER & LAYOUT (2 SHEETS)
G1, G2	PROPOSED GATEHOUSE (2 SHEETS)
S-1	MODEL "A" - SEVILLA FLOOR PLANS
S-2	MODEL "A" - SEVILLA ELEVATIONS
S-3	MODEL "A" - SEVILLA ELEVATIONS
V-1	MODEL "B" - VENEZIA FLOOR PLANS
V-2	MODEL "B" - VENEZIA ELEVATIONS
V-3	MODEL "B" - VENEZIA ELEVATIONS
M-1	MODEL "C" - MODENA FLOOR PLANS
M-2	MODEL "C" - MODENA FLOOR PLANS
M-3	MODEL "C" - MODENA FLOOR PLANS
C-1	MODEL "D" - CARINO FLOOR PLANS
C-2	MODEL "D" - CARINO ELEVATIONS
C-3	MODEL "D" - CARINO ELEVATIONS
AA	SUPPLEMENTAL ARCHITECTURAL DETAILS
LS1 OF LS6	LANDSCAPE PLAN
LS2 OF LS6	VINKEMULDER ROAD
LS3 OF LS6	NW 39TH AVENUE
LS4 OF LS6	TYPICAL MODELS
LS5 OF LS6	LANDSCAPE NOTES AND DETAILS
LS6 OF LS6	MITIGATION PLAN
L1	SITE PHOTOMETRICS PLAN
C-1	MASTER ENGINEERING PLAN
C-3	OFF SITE UTILITY PLAN

#### DEVELOPER:

**RECENGY HOMES, INC.**  
2840 UNIVERSITY DRIVE  
CORAL SPRINGS, FLORIDA 33065  
PH: 954-755-1775 FAX: 954-453-1668

#### ARCHITECT:

**MAURICE MENASCHE, AIA**  
12525 ORANGE DRIVE, SUITE 122  
DAVIE, FLORIDA 33330  
PH: 954-474-8540 FAX: 954-474-8559

#### LANDSCAPE ARCHITECT/SURVEYOR:

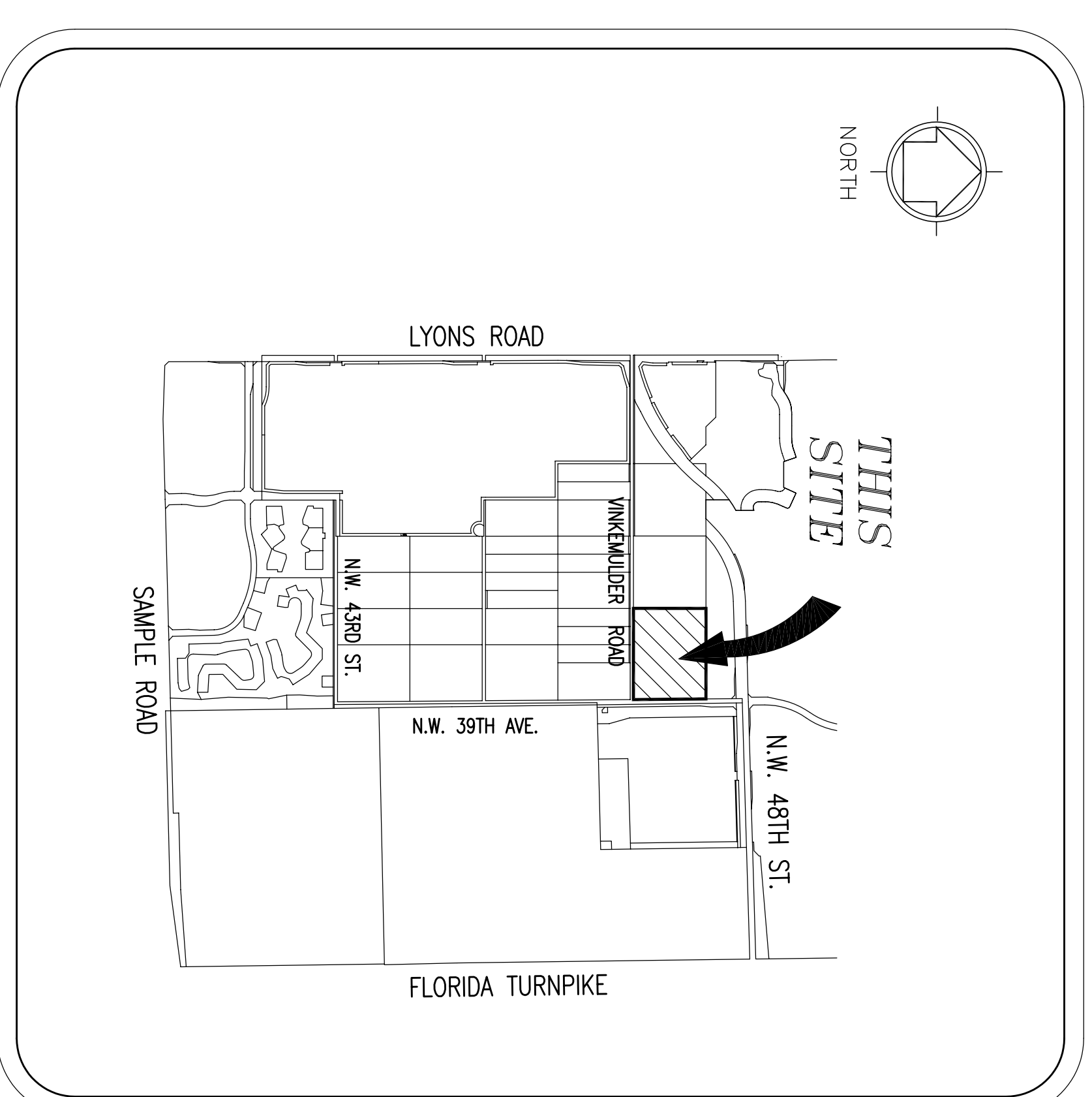
**CCL/IBI**  
2200 PARK CENTRAL BLVD. NORTH, SUITE 100  
POMPANO BEACH, FLORIDA 33064  
PH: 954-974-2200 FAX: 954-973-2686

#### CIVIL ENGINEER/SITE PLANNER:

**HARRIS ENGINEERING, INC.**  
2743 N.W. 19TH STREET  
POMPANO BEACH, FLORIDA 33069  
PH: 954-971-7200 FAX: 954-971-8200

#### LIGHTING ENGINEER:

**PROGRESSIVE DESIGN & ENGINEERING, INC.**  
10891 LA REINA ROAD, SUITE 100  
DELRAY BEACH, FLORIDA 33446  
PH: 561-498-2304 FAX: 561-498-2305



LOCATION SKETCH

NOT TO SCALE

## HARRIS ENGINEERING, INC. CONSULTING ENGINEERS

2743 N.W. 19TH STREET  
POMPANO BEACH, FL 33069  
Phone 954-971-7200

Certificate of Authorization No. 9912

ENGINEER'S PROJECT NO. 6136

01/18/06

SEAL