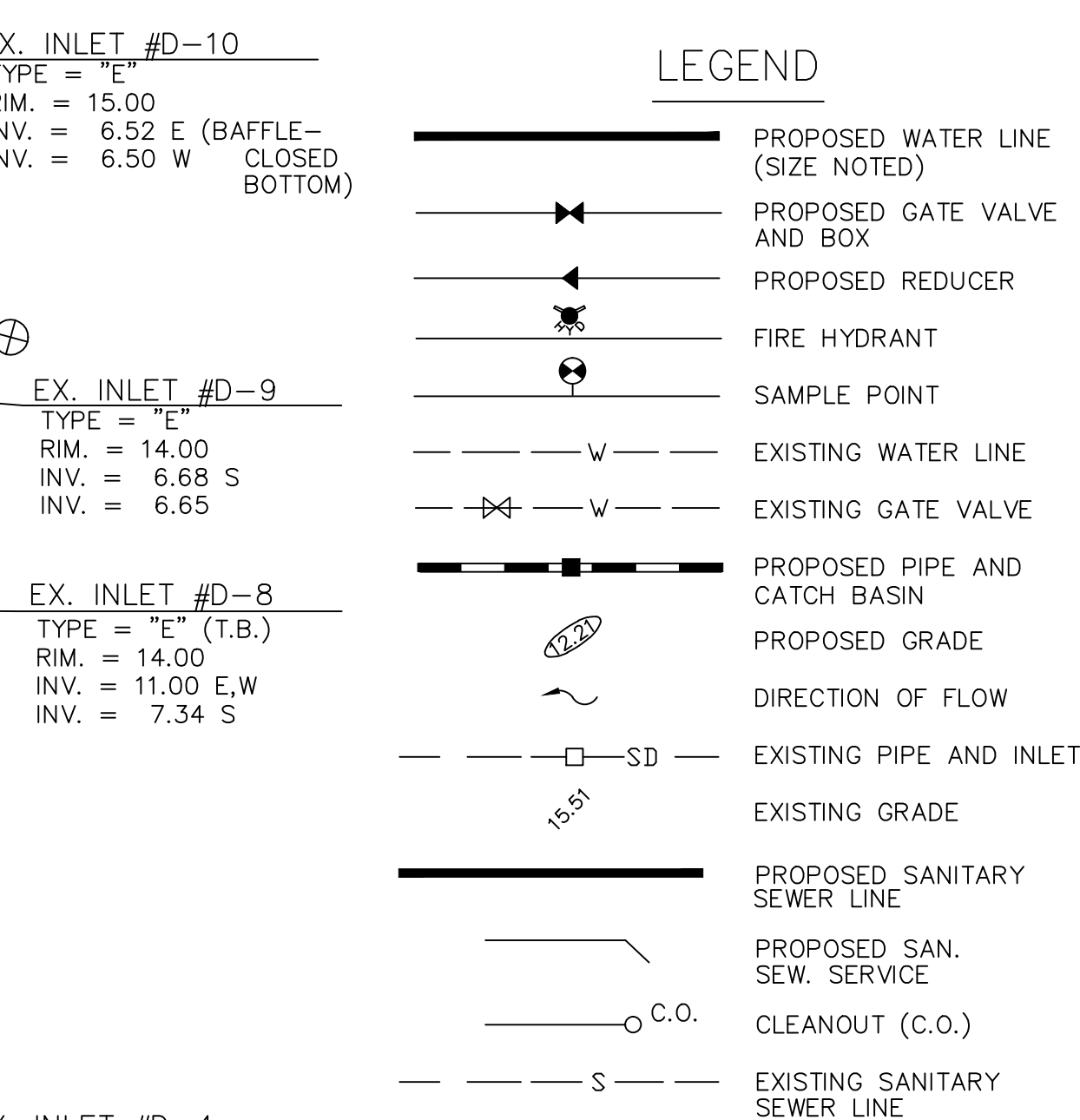
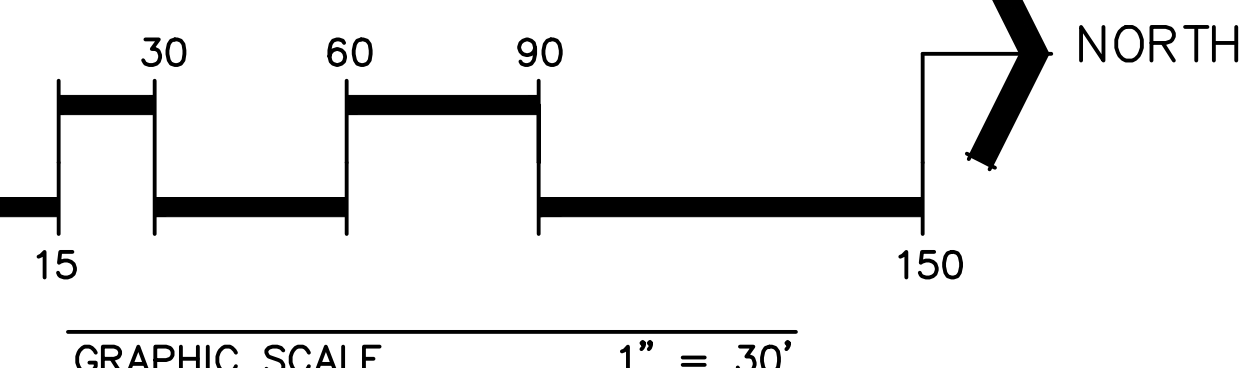
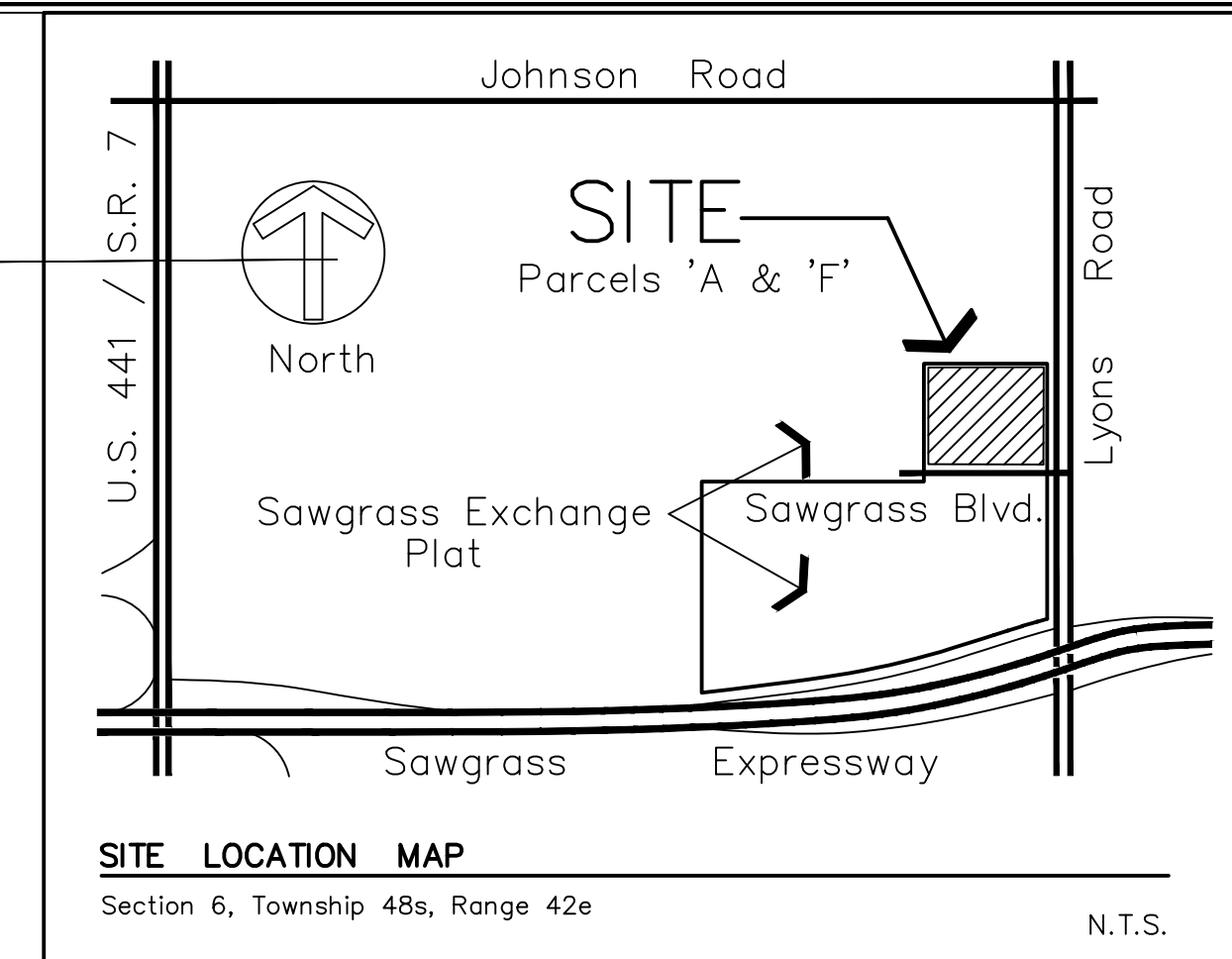


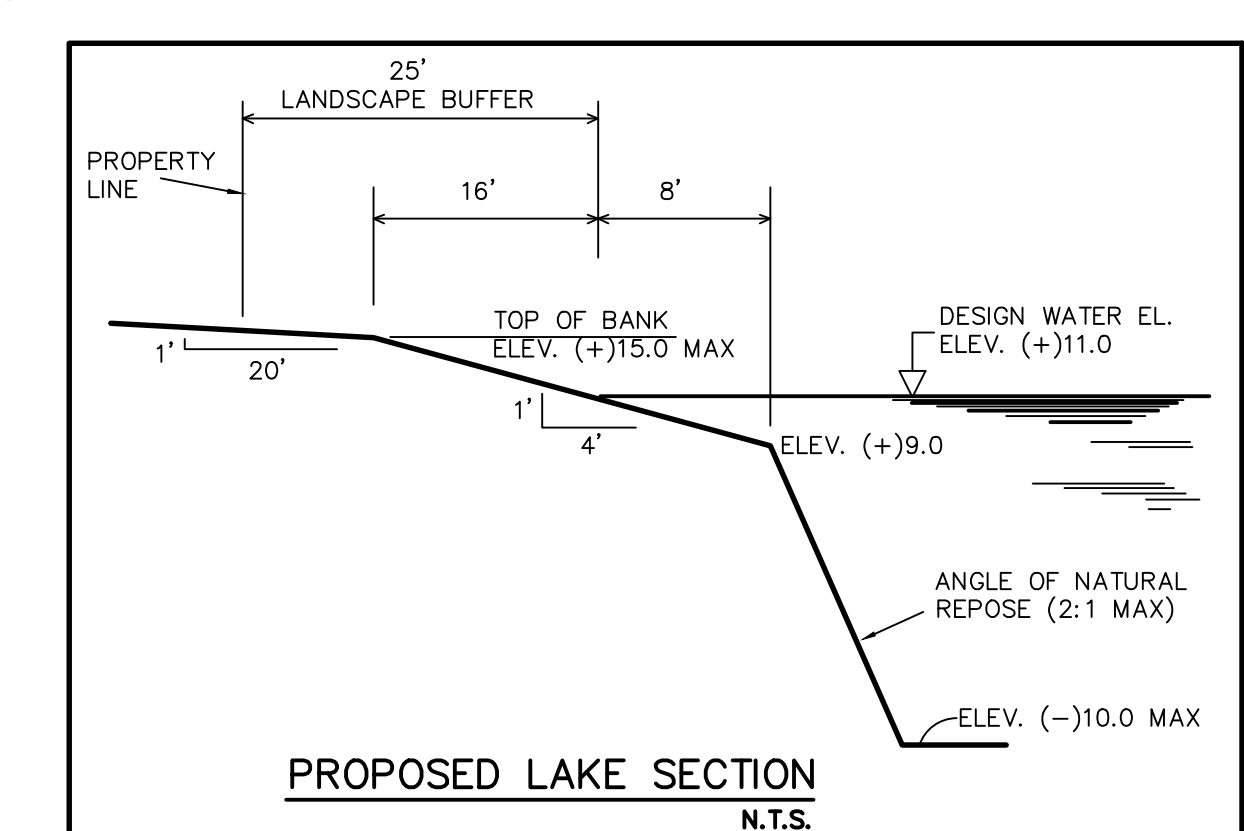
LOT 101, BLOCK 85
PALM BEACH FARMS COMPANY PLAT NO. 3
(PLAT BOOK 2, PAGES 45-54, PBCR)

N00°24'54"W 645.00'



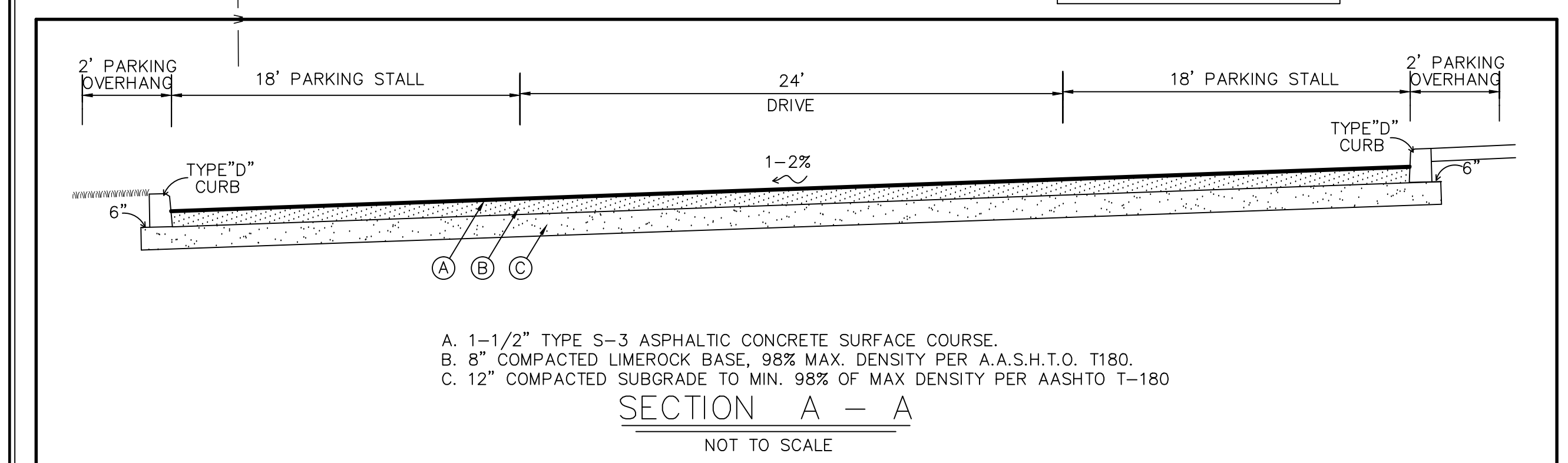
NOTE:
(T.B.) = ALL FRAME & GRATE SHALL BE TRAFFIC BEARING.

NOTE:
CONTRACTOR SHALL RESTORE PERIMETER BUFFER TO ORIGINAL CONDITION AT THE COMPLETION OF UTILITY WORK. THIS RESTORATION SHALL INCLUDE IRRIGATION, SOD, LANDSCAPE MATERIAL, MULCH AND FINAL GRADING.



NOTE:
CONTRACTOR SHALL RESTORE PERIMETER BUFFER TO ORIGINAL CONDITION AT THE COMPLETION OF UTILITY WORK. THIS RESTORATION SHALL INCLUDE IRRIGATION, SOD, LANDSCAPE MATERIAL, MULCH AND FINAL GRADING.

NOTE:
CONTRACTOR SHALL RESTORE PERIMETER BUFFER TO ORIGINAL CONDITION AT THE COMPLETION OF UTILITY WORK. THIS RESTORATION SHALL INCLUDE IRRIGATION, SOD, LANDSCAPE MATERIAL, MULCH AND FINAL GRADING.



A. 1-1/2" TYPE S-3 ASPHALTIC CONCRETE SURFACE COURSE.
B. 8" COMPACTED LIMESTONE BASE, 98% MAX. DENSITY PER A.A.S.H.T.O. T180.
C. 12" COMPACTED SUBGRADE TO MIN. 98% OF MAX DENSITY PER AASHTO T-180

**ALL ELEVATIONS ARE IN "NATIONAL GEODETIC VERTICAL DATUM 1929" (NGVD 29).
(SUBTRACT 1.56' TO OBTAIN NAVD 88 ELEVATIONS)**

S.F.W.M.D. PERMIT NO: 06-00551-S
B.C. LICENSE NO: SWM-192-6
MIN. FIN. FLR. = EL. 16.0 NGVD
MIN. C. ROAD. = EL. 14.0 NGVD
WATER CONTROL EL. = EL. 11.0 NGVD

NOTE:
PROVIDE THERMOPLASTIC STRIPING FOR ALL STOP BAR AND DOUBLE YELLOW STRIPING.

REVISE PER CITY DRC COMMENTS	DATE	BY
REVISE PER NEW BUILDING FOOTPRINTS	01/08/03	T.M.M.
REVISE PER CITY	11/26/02	EFE
REVISE PER CITY	11/20/02	EFE
REVISE PER ADDITIONAL COMMENTS	10/25/02	G.A.H.
REVISE PER DRC COMMENTS	10/10/02	T.M.M.
REVIEWS	DATE	BY

CAULFIELD & WHEELER, INC.
CIVIL ENGINEERING - LAND PLANNING
LANDSCAPE ARCHITECTURE - SURVEYING
7801A W. PALMETTO PARK ROAD - SUITE 1000
BOCA RATON, FLORIDA 33433
PHONE (561)-392-1991 / FAX (561)-750-1452

Sawgrass Office Complex
Florida
Coconut Creek
STORMWATER MANAGEMENT PLAN

DATE 10/17/02
DRAWN BY TMM
F.B./ PG. N/A
SCALE 1"=30'

JOHN F. WHEELER
REGISTERED ENGINEER
L.C. NO. 25478
STATE OF FLORIDA
DATE

JOB # 3995
SHT. NO.
C-1
OF 2 SHEETS