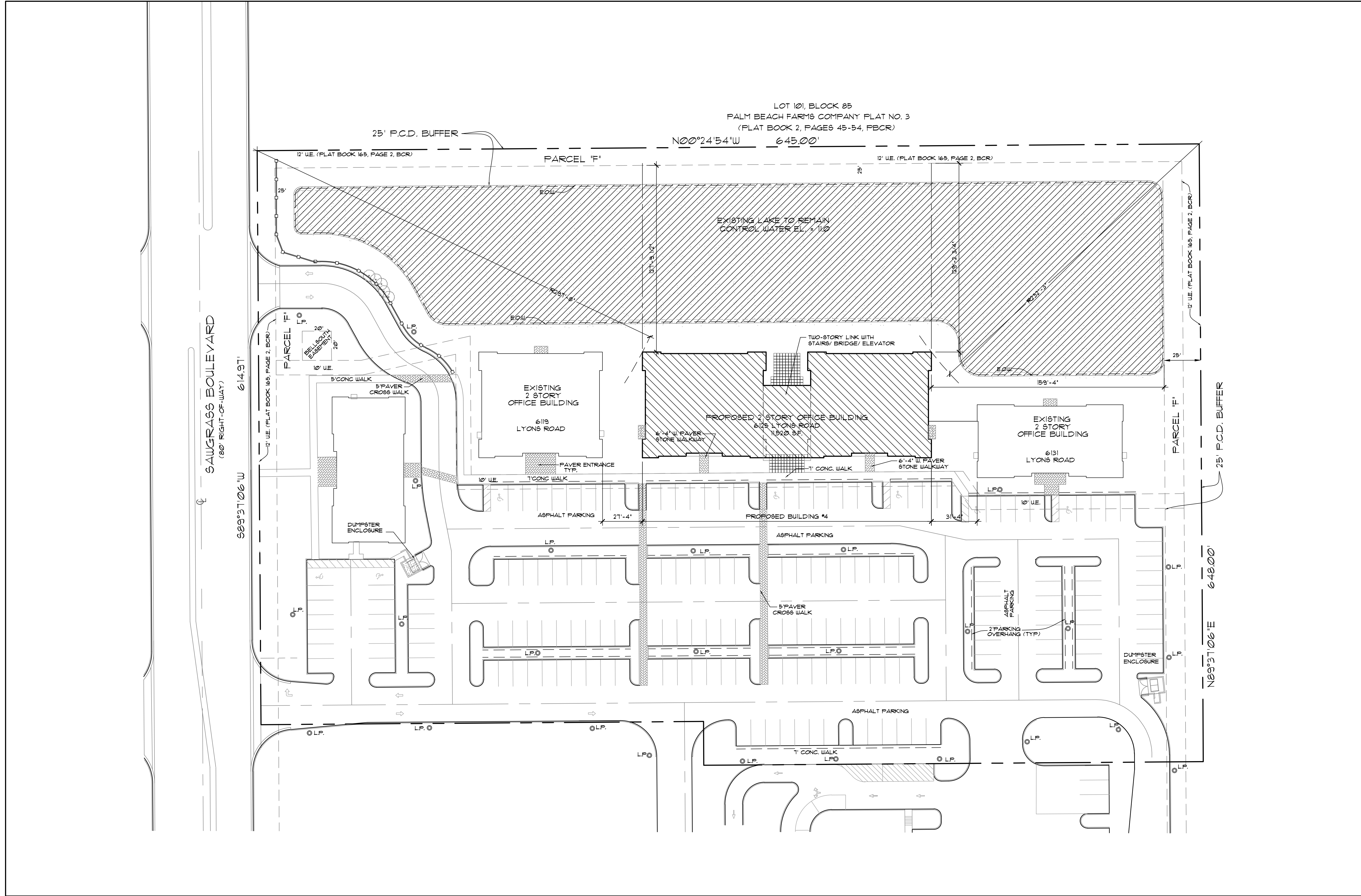
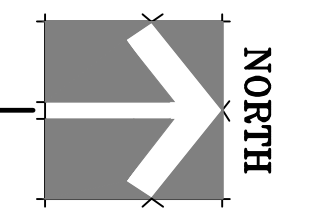


I:\Projects\2014\14079 D.R. Horton Headquarters\A2.0\_Site Plan\_14079.dwg - 11/21/2014 3:57:06 PM - DWG To PDF.pc3



1 SITE PLAN  
 SCALE: 1" = 30'-0"



D.R. HORTON CORPORATE OFFICES  
 SAUGRASS BOULEVARD  
 COCONUT CREEK, FLORIDA

KENNETH R. CARLSON - ARCHITECT, P.A.  
 1002 E. NEWPORT CENTER DR. SUITE 101  
 DEERFIELD BEACH, FLORIDA 33442  
 PH. (954) 421 - 8848  
 e-mail: krc@krcarlson.com

Revisions:  
 ▲  
 ▲  
 ▲  
 ▲

DRAWN BY: RCO  
 CHECKED BY: KSC  
 DATE: 08/07/14  
 SCALE: 1/1  
 PROJECT #: 14079  
 CAD Dwg FILE:

KENNETH R. CARLSON  
 AR 12546

SHEET OF  
 A2.0  
 PAGE OF