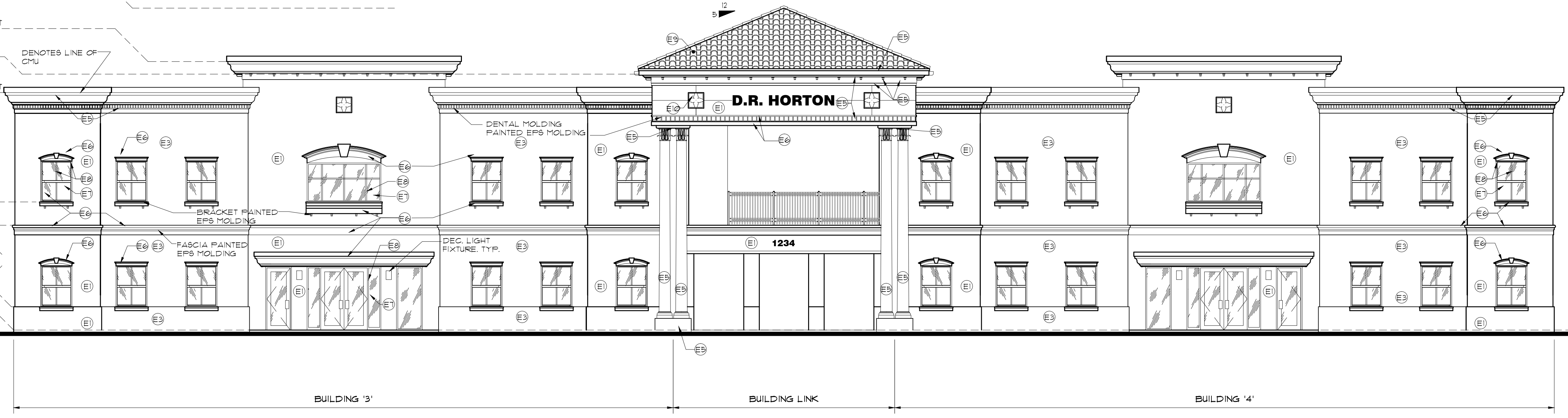


- PEAK OF ROOF
EL. 41'-6" AFF.
- TOP OF CMU PARAPET
EL. 34'-8" AFF.
- ROOF BEARING
EL. 32'-11 1/2" AFF.
- TOP OF CMU PARAPET
EL. 30'-9" AFF.
- TOP OF WINDOW
EL. 22'-3" AFF.
- TOP OF SILL
EL. 16'-6" AFF.
- TOP OF 2ND FLOOR
EL. 13'-6" AFF.
- TOP OF WINDOW
EL. 8'-4" AFF.
- TOP OF SILL
EL. 3'-0" AFF.
- FIN. FLR. SLAB
EL. 0'-0" AFF.



1 PROPOSED FRONT ELEVATION - (EAST SIDE)
1/8" = 1'-0"



2 PROJECT EAST ELEVATION
1/16" = 1'-0"

D. R. HORTON HEADQUARTERS
SAUGRASS BOULEVARD
COCONUT CREEK, FLORIDA 33---

KENNETH R. CARLSON - ARCHITECT, P.A.
1002 E. NEWPORT CENTER DR. SUITE 101
DEERFIELD BEACH, FLORIDA 33442
P.H. (954) 421 - 8848
FAX (954) 421 - 9929
e-mail: krc@krcarchitect.com

Revisions:

DRAWN BY: RCO
CHECKED BY: KRC
DATE: 08/07/14
SCALE: 1/16"
PROJECT #: 14279
CAD FILE: A5.0

KENNETH R. CARLSON
AR 12546

SHEET OF
A5.0
PAGE OF

I:\Projects\2014\14079 D R Horton Headquarters\A5.0 ELEVATIONS\14079.dwg, A5.0, 9/22/2014 10:45:32 AM, Copyright Kenneth R. Carlson - Architect, P.A. 2014