

LOCATION MAP

LEGAL DESCRIPTION:

ALL OF TRACT "C" OF "LYONS AND SAMPLE ROAD PLAT" ACCORDING TO THE PLAT THEREOF AS RECORDED IN PLAT BOOK 152 AT PAGE 44 OF THE PUBLIC RECORDS OF BROWARD COUNTY, FLORIDA, BEING MORE PARTICULARLY DESCRIBED AS FOLLOWS:

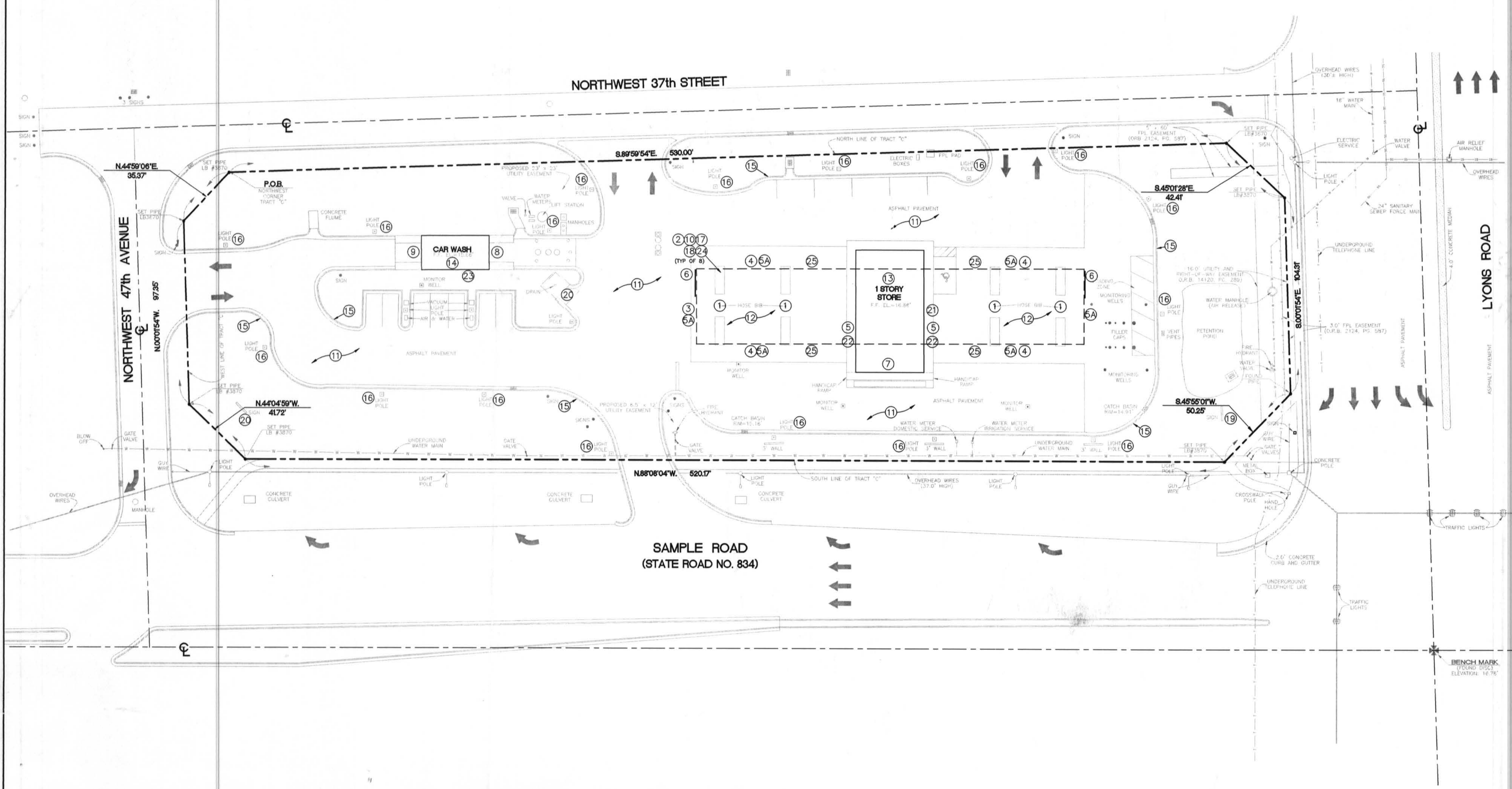
BEGIN AT THE NORTHWEST CORNER OF SAID TRACT "C"; THENCE RUN SOUTH 89 DEGREES 59 MINUTES 54 SECONDS EAST ALONG THE NORTH LINE OF SAID TRACT "C" FOR A DISTANCE OF 530.00 FEET TO A POINT; THENCE RUN SOUTH 45 DEGREES 01 MINUTES 28 SECONDS EAST FOR A DISTANCE OF 42.41 FEET TO A POINT; THENCE RUN SOUTH 00 DEGREES 01 MINUTES 54 SECONDS EAST ALONG THE EAST LINE OF SAID TRACT "C" FOR A DISTANCE OF 104.31 FEET TO A POINT; THENCE RUN SOUTH 45 DEGREES 55 MINUTES 01 SECONDS WEST FOR A DISTANCE OF 50.25 FEET TO A POINT; THENCE RUN NORTH 88 DEGREES 08 MINUTES 04 SECONDS WEST ALONG THE SOUTH LINE OF SAID TRACT "C" FOR A DISTANCE OF 520.17 FEET TO A POINT; THENCE RUN NORTH 44 DEGREES 04 MINUTES 59 SECONDS WEST FOR A DISTANCE OF 41.72 FEET TO A POINT; THENCE RUN NORTH 00 DEGREES 01 MINUTES 54 SECONDS WEST ALONG THE WEST LINE OF SAID TRACT "C" FOR A DISTANCE OF 97.35 FEET TO A POINT; THENCE RUN NORTH 44 DEGREES 59 MINUTES 06 SECONDS EAST FOR A DISTANCE OF 35.37 FEET TO THE POINT OF BEGINNING.

NOTES:

- 1. AREA OF THIS SITE IS: 92,294 SQUARE FEET = (2,1188 AC.)
2. ELEVATIONS ARE BASED ON N.G.V. DATUM, BROWARD COUNTY BENCH MARK NO. 2732, ELEVATION: 14.52 FEET.
3. BEARINGS ARE BASED ON THE NORTH LINE OF TRACT C BEING S.89°59'54"E.
4. LATITUDE OF THIS SITE IS: 26° 16' 31" NORTH.
5. LONGITUDE OF THIS SITE IS: 80° 11' 09" WEST.
6. THIS SITE LIES IN SECTION 18, TOWNSHIP 48 SOUTH, RANGE 42 EAST, BROWARD COUNTY, FLORIDA.
7. THIS SURVEY WAS DRAFTED UTILIZING AUTOCAD, RELEASE 12 SOFTWARE ON AN IBM COMPATIBLE COMPUTER. SHOULD A 3 1/2" OR 5 1/4" FLOPPY DISK WITH THIS SURVEY DATA BE DESIRED, CONTACT PULICE LAND SURVEYORS, INC.
8. BROWARD COUNTY TAX FOLIO NUMBER IS: 48-42-191-01-001.

SCOPE OF WORK:

- 1. REMOVE SPANDRELS
2. REPAIR COLUMNS WITH ACM
3. REMOVE BACKLIGHTED SIGNAGE
4. DEACTIVATE CANOPY LIGHT BOX; PAINT LENS AND FRAME WHITE
5. PAINT CANOPY FASCIA WHITE AND INSTALL A RAISED NON-ILLUMINATED RED BAND ON LYONS AND SAMPLE ROAD SIDES OF CANOPY. THE RAISED NON-ILLUMINATED RED BAND 2 3/8" ABOVE THE BOTTOM EDGE OF THE EXISTING FASCIA, ON NON-STREET SIDES INSTALL A RED VINYL TAPE DECAL IN ALIGNMENT WITH THE RAISED NON-ILLUMINATED RED BAND.
6. INSTALL 19 5/8" INDIVIDUAL INTERNALLY ILLUMINATED THREE DIMENSIONAL CHANNEL LETTERS. THE LETTERS ARE BACKLIGHTED WITH NEON. THE LOGOTYPE MODULE IS POSITIONED ADJACENT TO AN EXTERNAL CORNER MODULE ON THE CANOPY FASCIA MOST USABLE TO THE STREET. THE LETTERS WILL BE LOCATED 2 3/8" ABOVE THE BOTTOM OF THE FASCIA AND THE LETTERS WILL START 33 1/2" FROM THE CORNER OF THE FASCIA.
7. INSTALL RED ACM OR PLASTIC FOODMART DECAL LETTERS. THE UPPER CASE IS 9" AND THE LOWER CASE IS 7". ALL LETTERING IS RED ON WHITE. THE LETTERING IS PLACED ON THE FASCIA STARTING 6 1/2" FROM THE BOTTOM OF THE FASCIA.
8. INSTALL RED ACM OR PLASTIC ENTER LETTERS. THE UPPER CASE IS 9" AND THE LOWER CASE IS 7". ALL LETTERING IS RED ON YELLOW. THE LETTERING IS PLACED ON THE YELLOW PORTION OF THE FASCIA STARTING 6 1/2" FROM THE COLOR CODE AREA WITH THE BOTTOM OF THE LETTERS 6 1/2" FROM THE BOTTOM OF THE FASCIA.
9. INSTALL RED ACM OR PLASTIC EXIT DECAL LETTERS. THE UPPER CASE IS 9" AND THE LOWER CASE IS 7". ALL LETTERING IS RED ON WHITE. THE LETTERING IS PLACED ON THE YELLOW PORTION OF THE FASCIA STARTING 6 1/2" FROM THE COLOR CODE AREA WITH THE BOTTOM OF THE LETTERS 6 1/2" FROM THE BOTTOM OF THE FASCIA.
10. INSTALL DISPENSER VALANCE AND GRAPHICS.
11. SEAL COAT PARKING LOTS. RE-STRIPE ADA AND PARKING.
12. PRESSURE WASH AND PAINT CANOPY DECK WHITE.
13. PAINT MART WHITE, PAINT ENTIRE WAINSCOT GREY.
14. PAINT CARWASH WHITE WITH 12" GREY BOTTOM BAND.
15. PAINT CURBS WHITE.
16. PAINT YARD LIGHTS AND POLES WHITE.
17. PAINT ISLAND FORMS WHITE.
18. PAINT CANOPY COLUMNS WHITE WITH 12" GREY BAND.
19. PAINT EXISTING MONUMENT SIGN STRUCTURE WHITE WHILE LEAVING THE EXISTING FACE TO REMAIN.
20. PAINT TRASH ENCLOSURES WHITE WITH 12" GREY BAND. PAINT DOORS AND FRAMES GREY.
21. PAINT NON-PUBLIC DOORS AND FRAMES WHITE.
22. PAINT FOODMART FASCIA WHITE.
23. PAINT CARWASH FASCIA WHITE.
24. DECAL DISPENSERS.
25. INSTALL CLEARANCE, NO SMOKING AND MISCELLANEOUS DECALS.



APPROVED
DATE: 10/3/01
ADMINISTRATIVE APPROVAL

Table with columns: NO., DATE, REVISION, BY, CHK. Contains revision history for canopy red band and signage.

PLANS PREPARED BY: MDM Services, Inc. ENGINEERING & ENVIRONMENTAL

EQUIVA SERVICES LLC, EQUILON Shell, MOTIVA Texaco. 12700 NORTHBOROUGH DRIVE HOUSTON, TX. 77067-2508

SITE PLAN
4701 W. SAMPLE ROAD
COCONUT CREEK, FL.

Table with columns: SCALE, DATE, DRAWN BY, SITE NO., CHECKED BY, APPROVED BY, MDM JOB NO., DWG NO., SHEET NO.

LEVEL 1