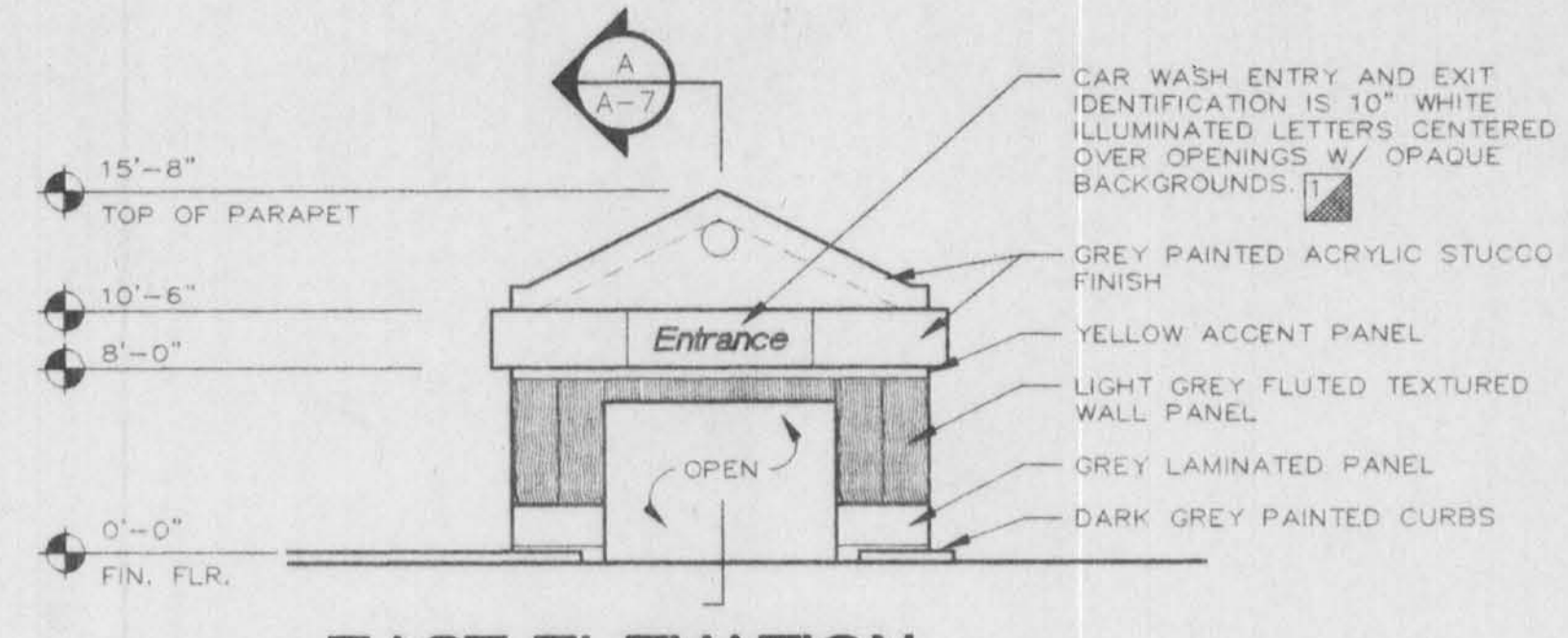
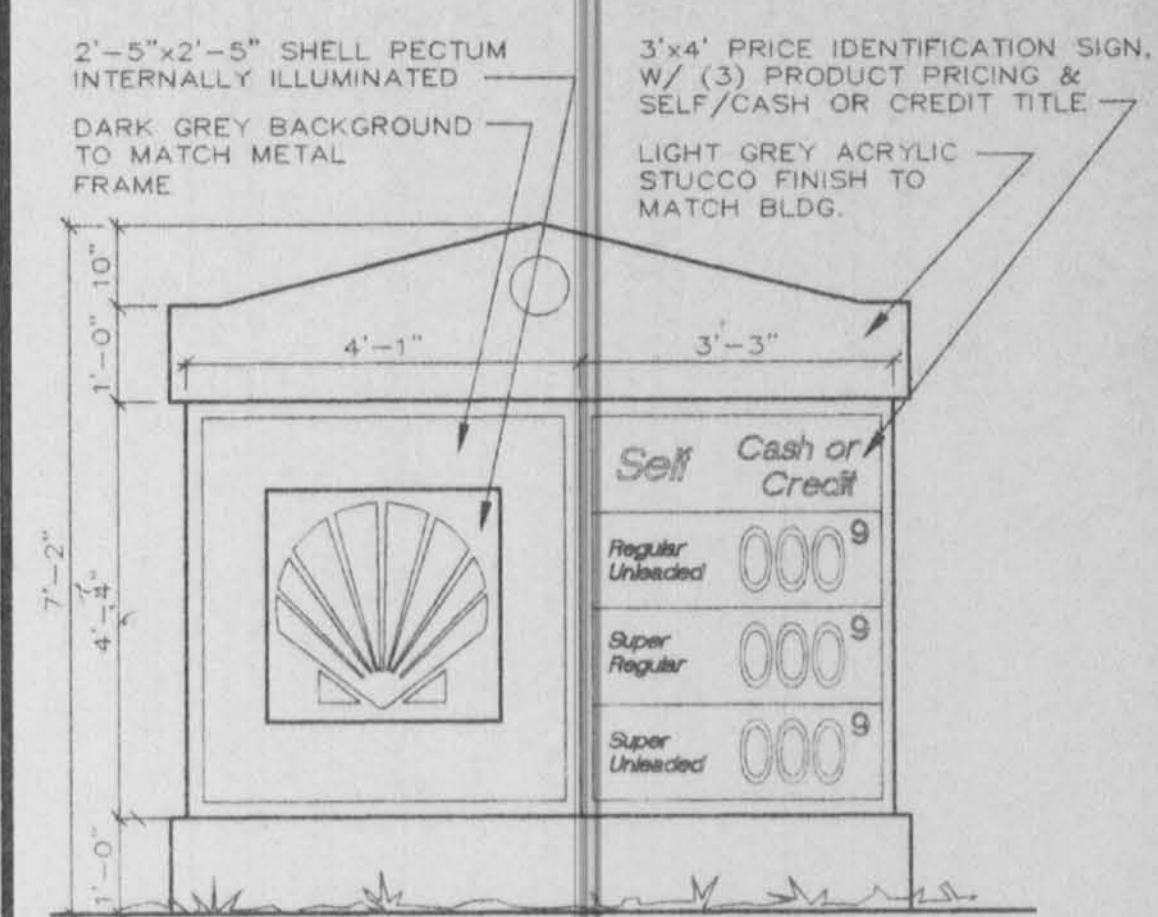


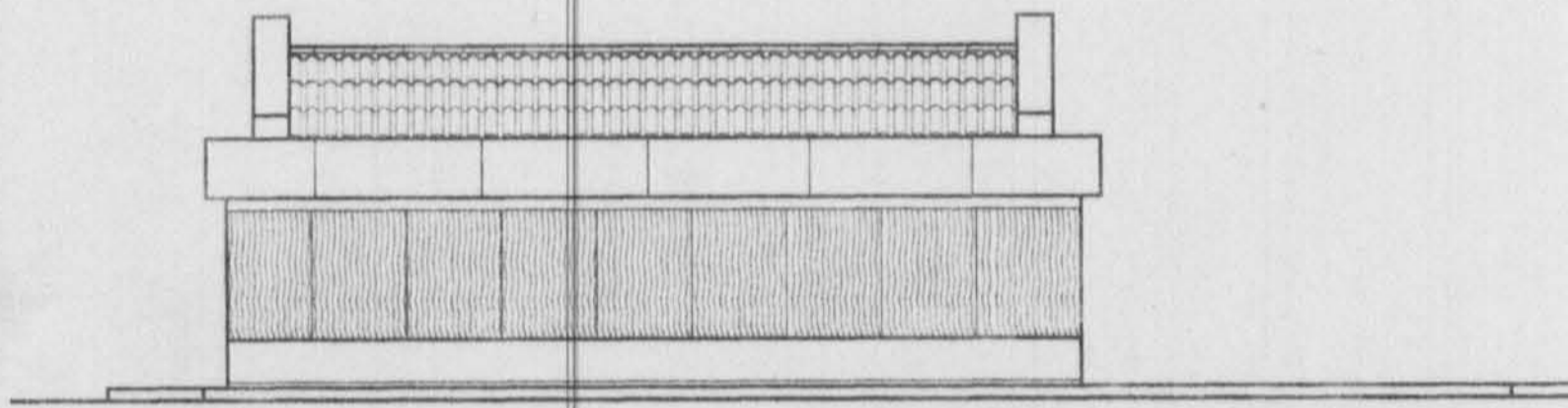
SOUTH ELEVATION - SAMPLE ROAD
SCALE: 1/8" = 1'-0"



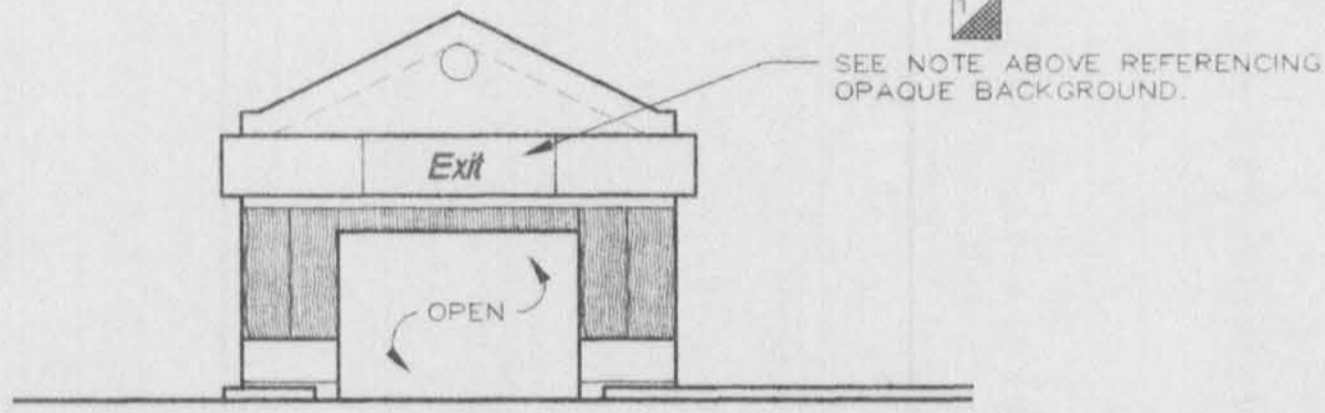
EAST ELEVATION
SCALE: 1/8" = 1'-0"



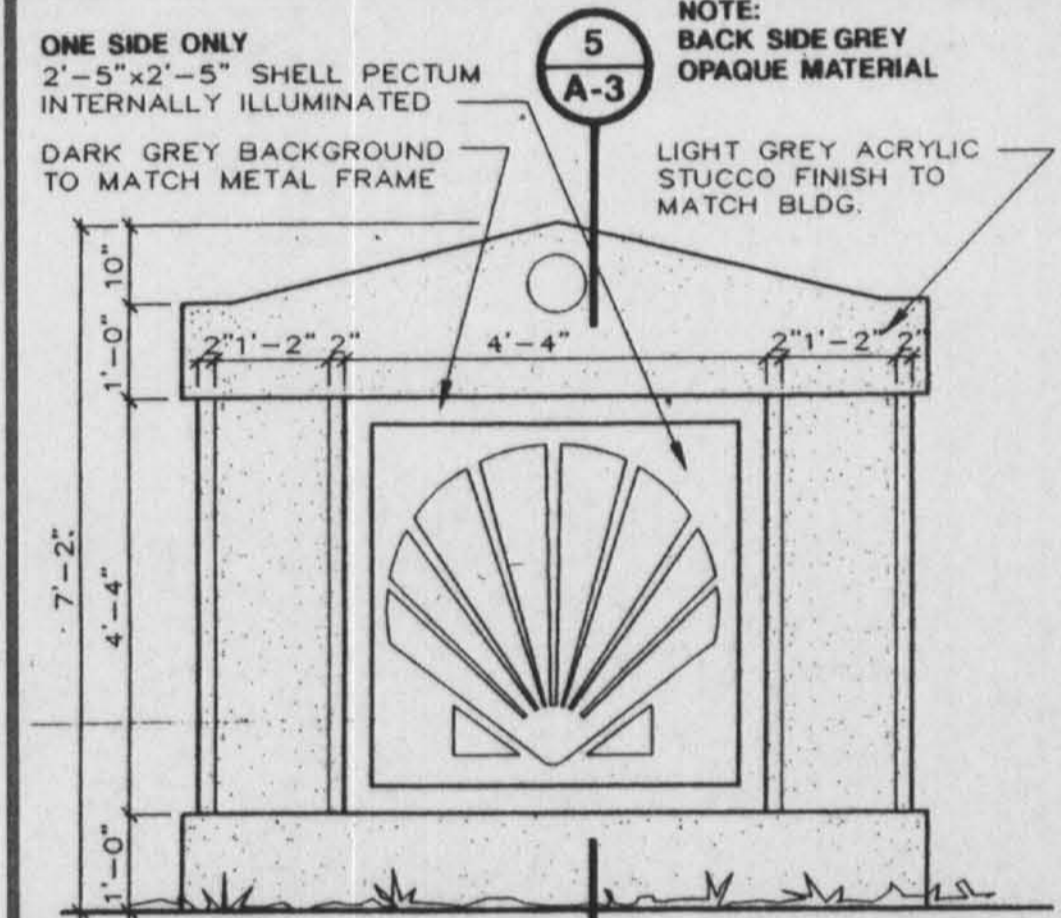
GROUND SIGN ELEV.
SCALE: 1/2" = 1'-0"



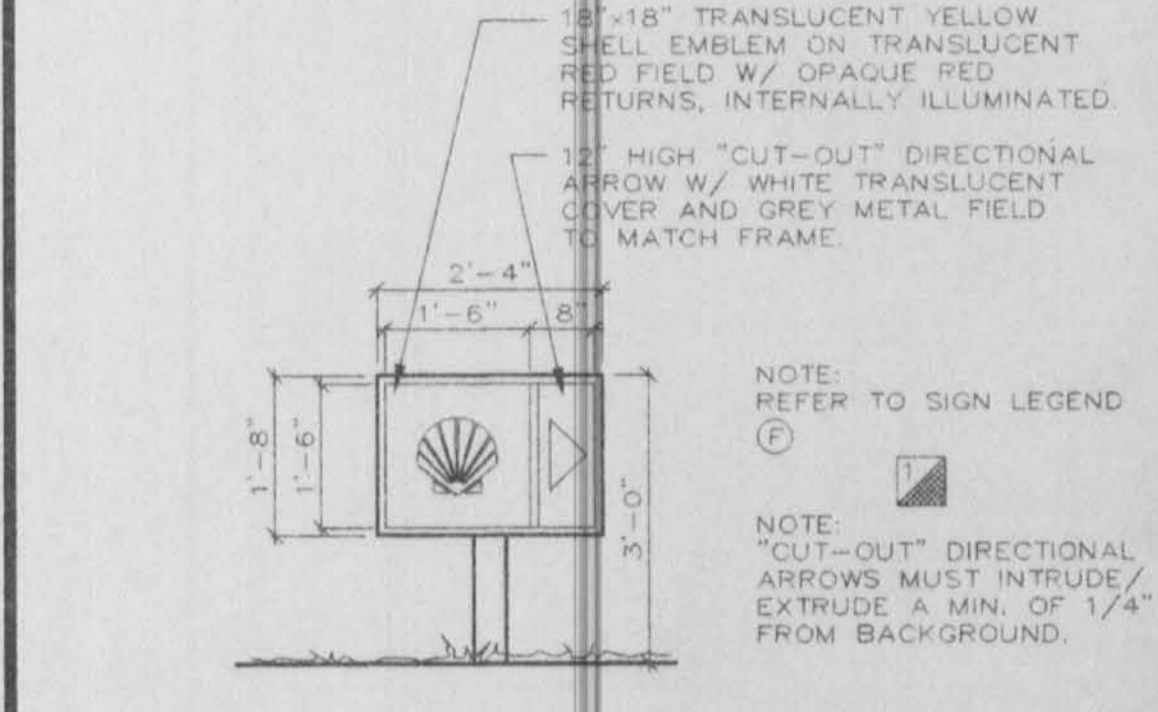
NORTH ELEVATION
SCALE: 1/8" = 1'-0"



WEST ELEVATION
SCALE: 1/8" = 1'-0"



GROUND SIGN - ELEVATION
SCALE: 1/2" = 1'-0"



DIRECTIONAL SIGN ELEV.
SCALE: 1/2" = 1'-0"

ARCHITECT
JEFF FALKANGER & ASSOCIATES INCORPORATED

614 SOUTH FEDERAL HWY.
FT. LAUDERDALE, FL 33301
(305) 764-6575

2830 WINKLER AVENUE
SUITE #108-A
FT. MYERS, FL 33916
(813) 277-9333

COPYRIGHT © 1994
ARCHITECT JEFF FALKANGER AND ASSOCIATES INC.
ALL RIGHTS RESERVED. THIS DOCUMENT
OR PARTS THEREOF, MAY NOT BE REPRODUCED
IN ANY FORM WITHOUT PERMISSION

DESIGNED
DRAWN
CHECKED

25 MAR 1994
SIGN PERMIT REVISIONS

REVISIONS

COMM 92079 DATE 25 MAR, 1994

SHELL OIL CO.
AMERICAN EQUITY SITE DEVELOPERS

LYONS & SAMPLE RD.
COCONUT CREEK, FL.

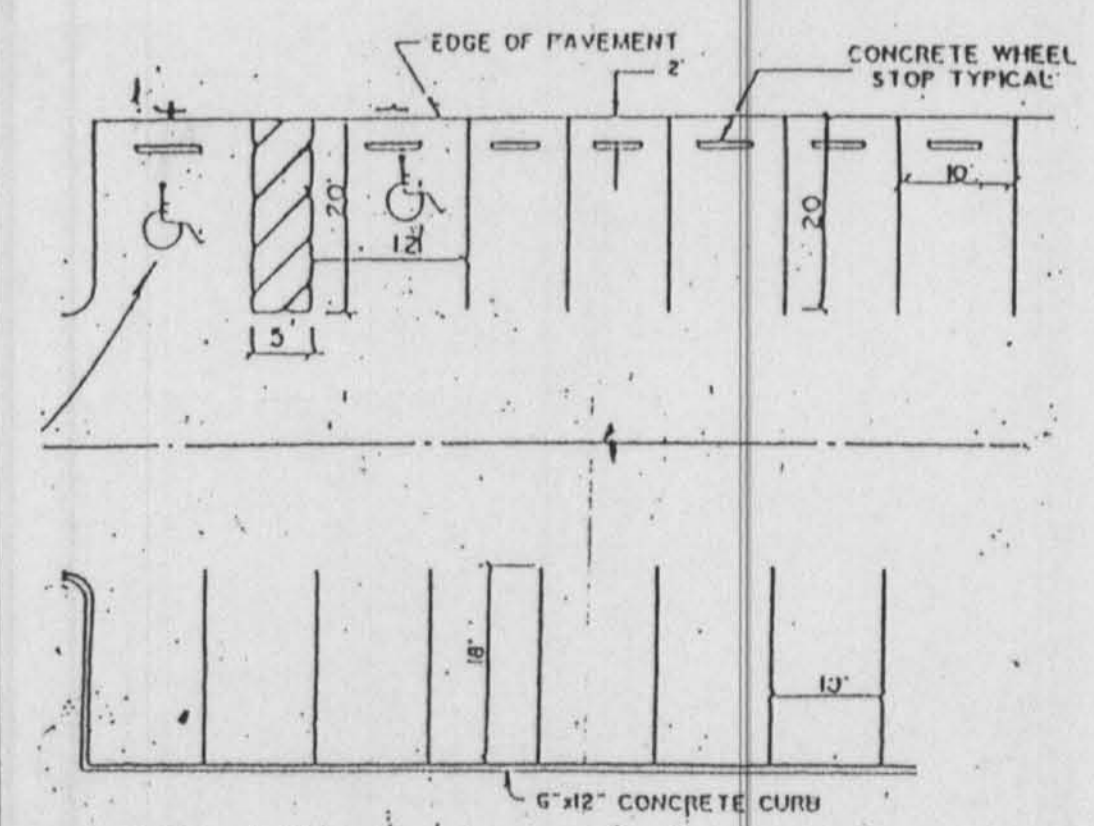
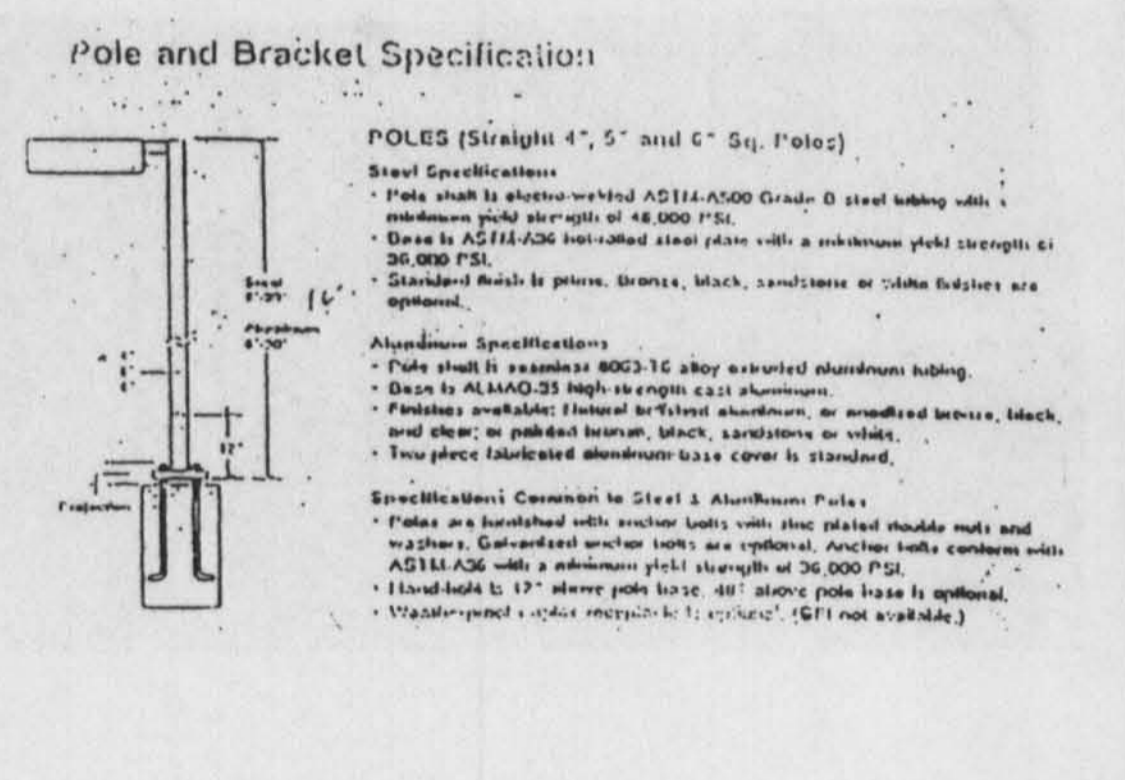
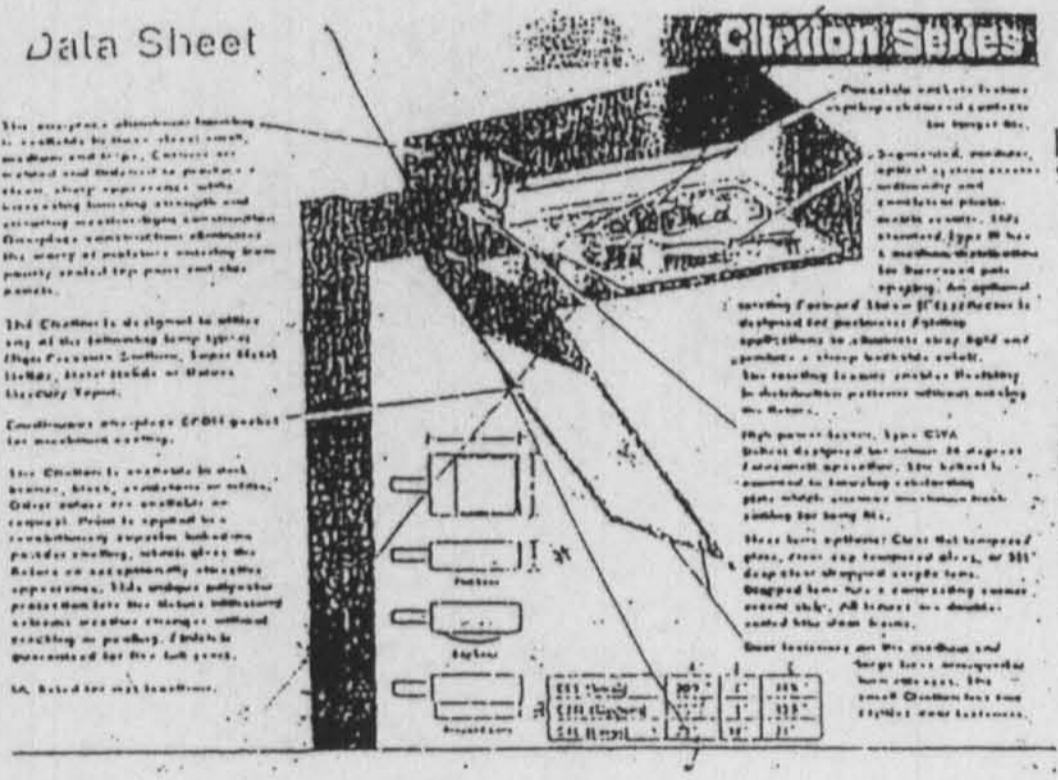
EXTERIOR CAR WASH ELEVATIONS

SIGN ELEVATIONS SITE DETAILS

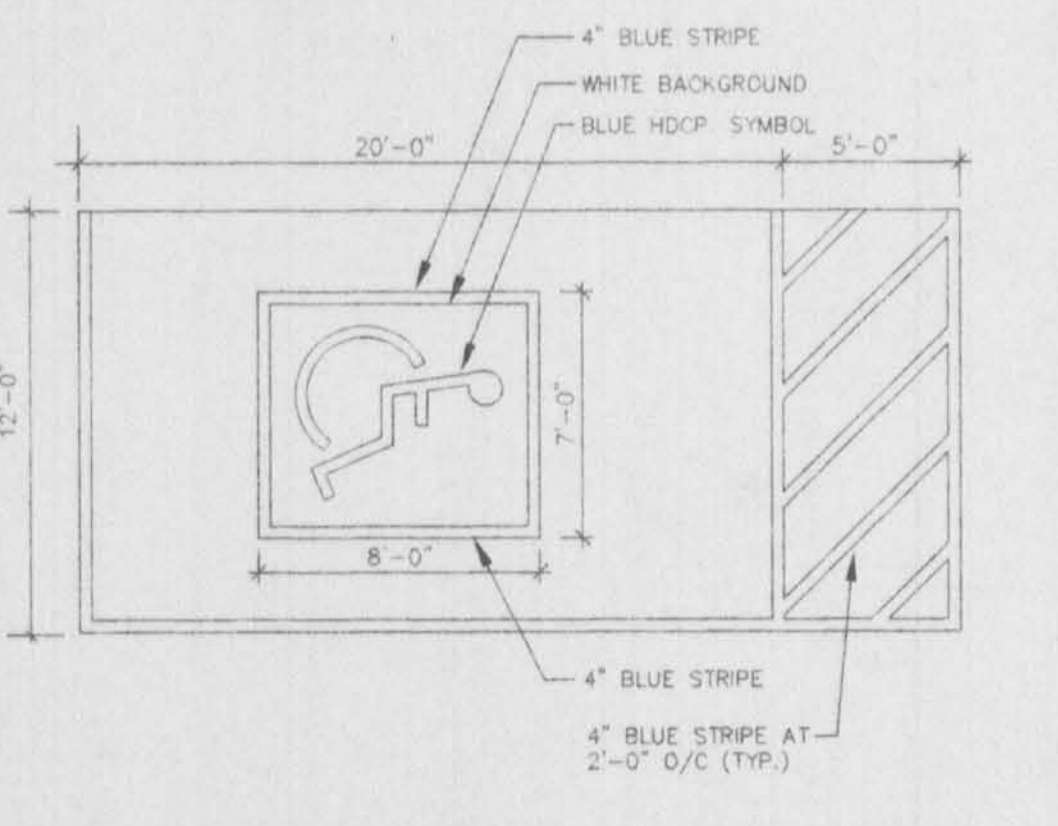
A-3 OF **7**



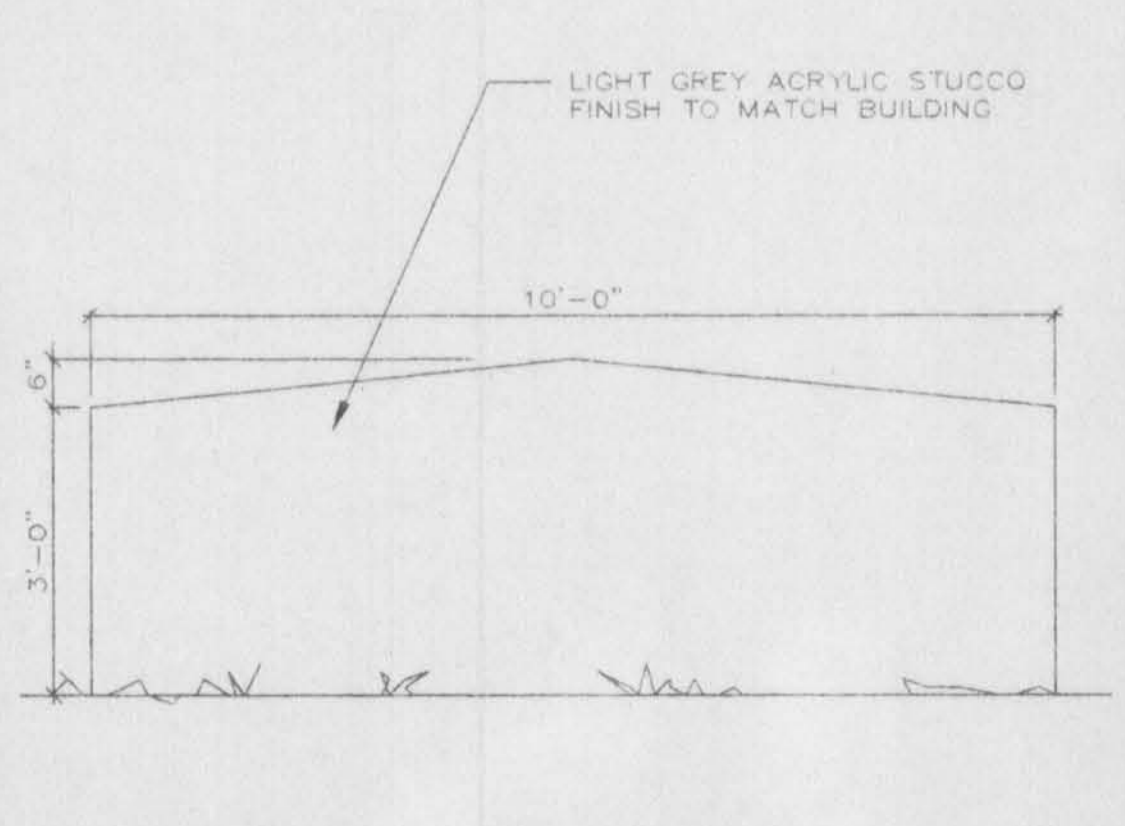
HANDICAP SIGN DETAIL
N.T.S. FLORIDA STATUTES, SECTION 316.1955



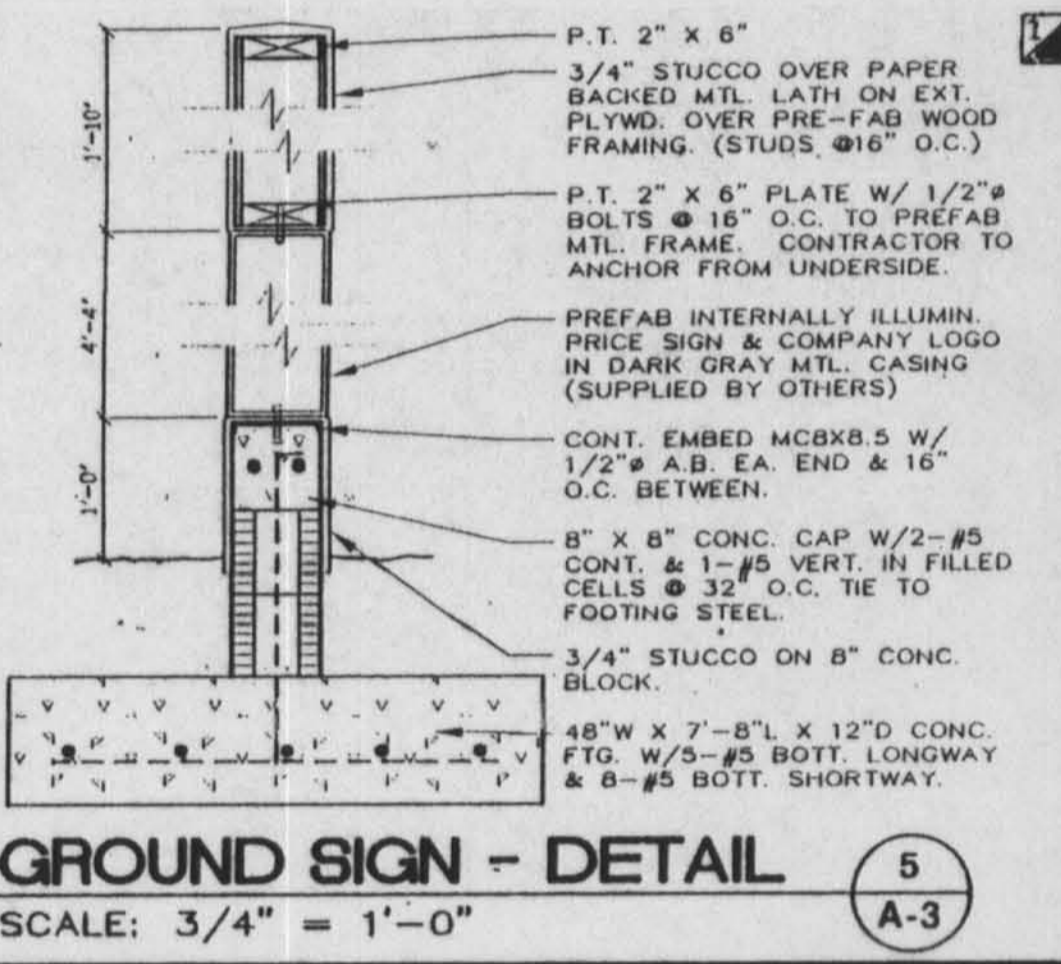
PARKING DETAILS
SCALE: 1/8" = 1'-0"



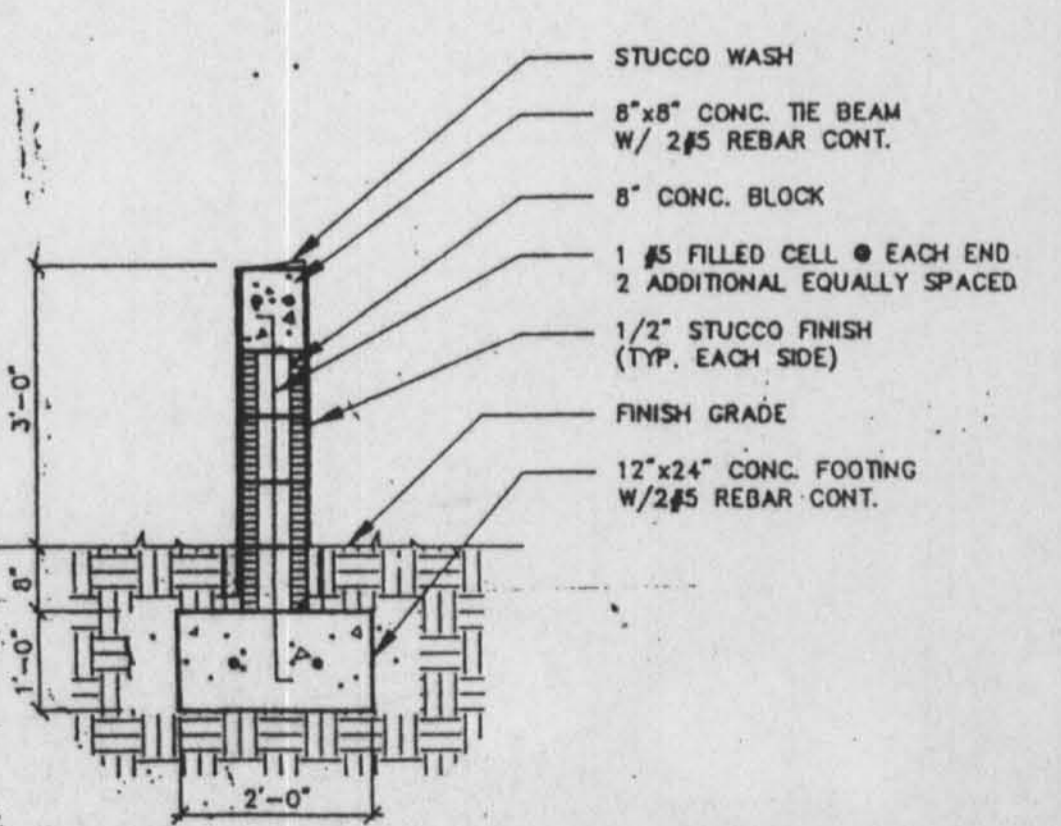
HDGP. PARKING
SCALE: 1/8" = 1'-0"



WALL ELEVATION
SCALE: 1/2" = 1'-0"



GROUND SIGN - DETAIL
SCALE: 3/4" = 1'-0"



WALL DETAIL (SECTION)
SCALE: 1/2" = 1'-0"

- SIGN LEGEND**
- (A) "FOOD MART", INTERNALLY ILLUMINATED BUILDING FASCIA PANEL /BACKGROUND, OPAQUE SIGN W/ 18" PUSH-OUT LETTERS. LETTERS ARE WHITE TRANSLUCENT WITH GREY OPAQUE RETURNS.
ALLOWABLE SIGN LENGTH: (36 L.F. x 75%) = 27 L.F.
ACTUAL SIGN LENGTH: 9'-3" LENGTH
ACTUAL SIGN AREA: 15.25 S.F.
PROJECTION FROM PANEL: APPROX. 3"-4"
 - (B) "CAR WASH", INTERNALLY ILLUMINATED BUILDING FASCIA PANEL /BACKGROUND, OPAQUE SIGN W/ 18" PUSH-OUT LETTERS. LETTERS ARE WHITE TRANSLUCENT WITH GREY OPAQUE RETURNS.
ALLOWABLE SIGN LENGTH: (36 L.F. x 75%) = 27 L.F.
ACTUAL SIGN LENGTH: 9'-3" LENGTH
ACTUAL SIGN AREA: 13.88 S.F.
PROJECTION FROM PANEL: APPROX. 3"-4"
 - (C) "SELF", 10" HIGH "CUT-OUT" LETTERS WITH WHITE TRANSLUCENT COVER AT ENDS OF SPANDREL PANELS, INTERNALLY ILLUMINATED. ALL "CUT-OUT" LETTERS MUST INTRUDE/EXTRUDE A MIN. 1/4" FROM OPAQUE BACKGROUND.
ALLOWABLE SIGN AREA: 50 S.F.
ACTUAL SIGN LENGTH: 2'-0"
ACTUAL SIGN AREA: 1.67 S.F.
 - (D) "SHELL", PUMP ISLAND CANOPY FASCIA PANEL/BACKGROUND, OPAQUE W/ 18" PUSH-OUT LETTERS, INTERNALLY ILLUMINATED, LETTERS ARE WHITE TRANSLUCENT WITH GREY OPAQUE RETURNS.
ALLOWABLE SIGN LENGTH: (50 L.F. x 75%) = 37.5 L.F.
ACTUAL SIGN LENGTH: 5'-10" LENGTH
ACTUAL SIGN AREA: 8.75 S.F.
PROJECTION FROM PANEL: APPROX. 3"-4"
 - (E) DIRECTIONAL SIGNS: 18"x18" TRANSLUCENT YELLOW SHELL EMBLEM ON TRANSLUCENT RED FIELD WITH OPAQUE RED RETURNS, INTERNALLY ILLUMINATED. 12" HIGH "CUT-OUT" DIRECTIONAL ARROW WITH WHITE TRANSLUCENT COVER & GREY METAL FIELD TO MATCH FRAME. (SEE "NOTE" ON SIGN ELEVATION DETAIL)
 - (F) IDENTIFICATION SIGN: 2'-5"x2'-5" TRANSLUCENT YELLOW SHELL EMBLEM ON TRANSLUCENT RED FIELD WITH OPAQUE RED RETURNS, INTERNALLY ILLUMINATED. PRICE SIGNAGE TO BE 3'x4" BLACK LETTERING ON INTERNALLY ILLUMINATED TRANSLUCENT YELLOW FIELD WITH CHANGEABLE PRICE COPY. FRAMING AND FIELD AROUND SHELL EMBLEM SHALL BE DARK GREY METAL.
 - (G) "ENTRANCE/EXIT", LOCATED ON ENDS OF CAR WASH, SHALL BE 10" HIGH "CUT-OUT" LETTERS WITH WHITE TRANSLUCENT ON FASCIA PANEL, INTERNALLY ILLUMINATED. ALL "CUT-OUT" LETTERS MUST INTRUDE/EXTRUDE A MIN. 1/4" FROM OPAQUE BACKGROUND.
- NOTE:**
ALL ILLUMINATED SIGNS WILL HAVE DISCONNECT SWITCHES.

LAST DATE PRINTED 4-4-94