

1 CONCRETE CURB (TYPE 'D') DETAIL

SCALE: NONE

2 TYPE 'F' CURB & GUTTER DETAIL

SCALE: NONE

3 CONCRETE PAVEMENT SECTION

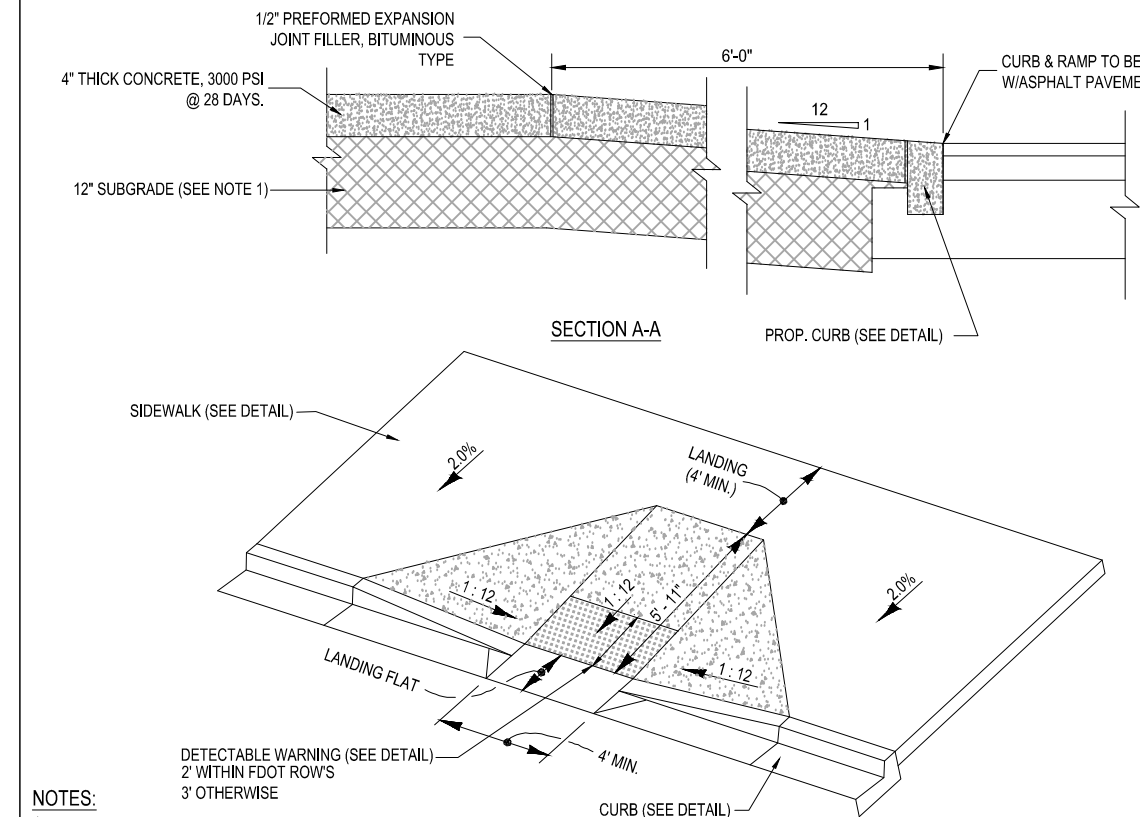
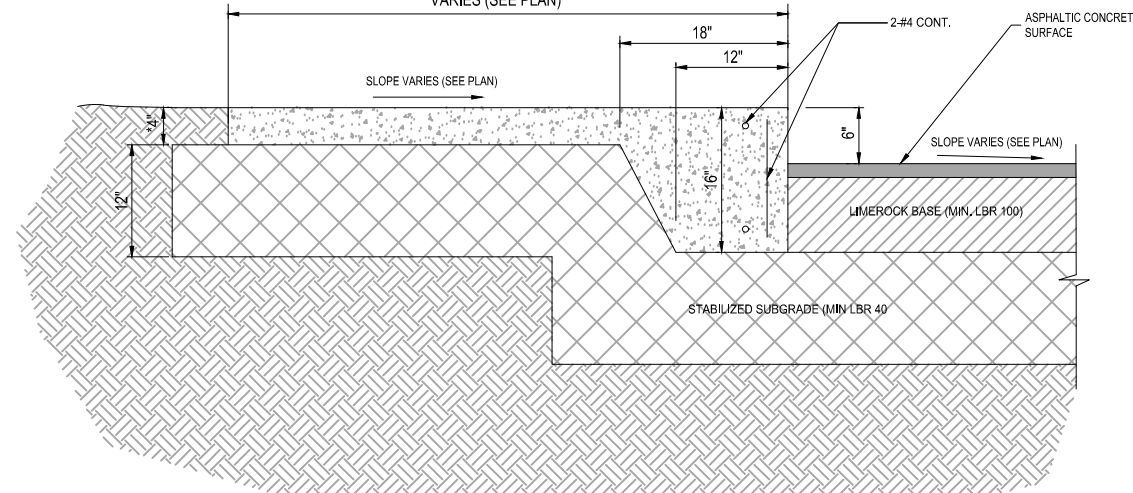
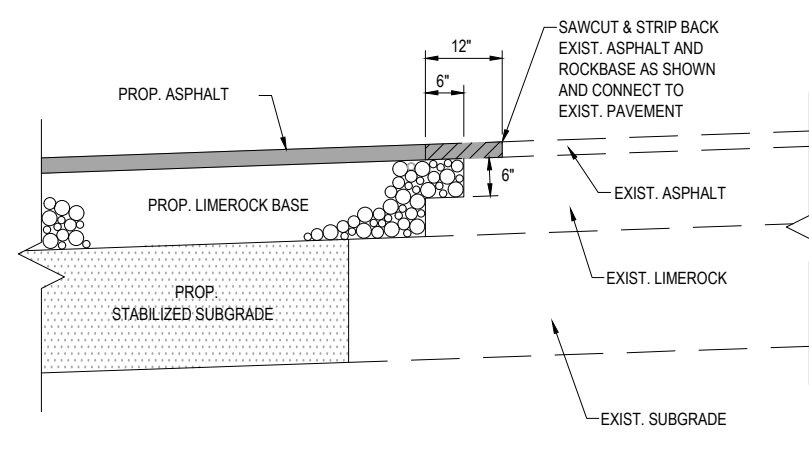
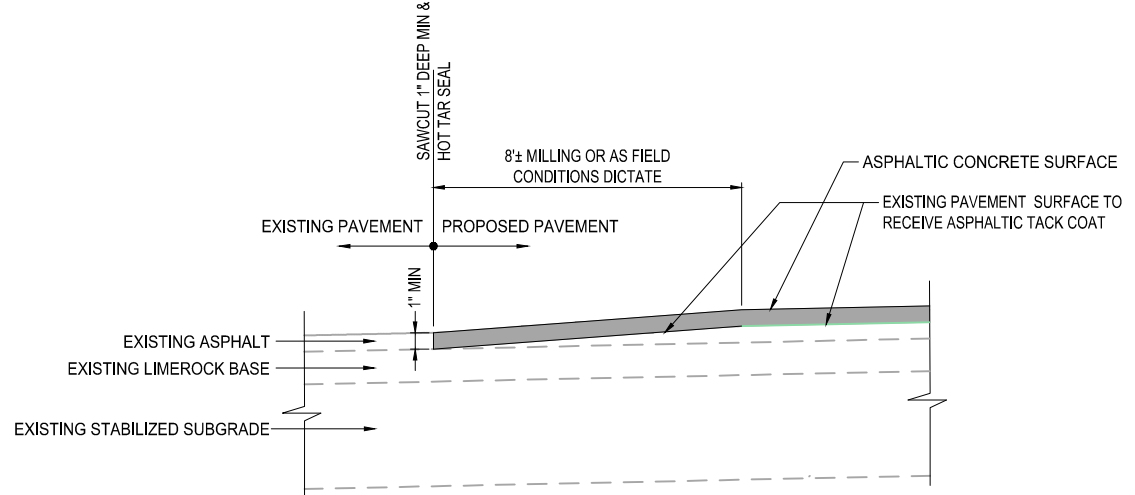
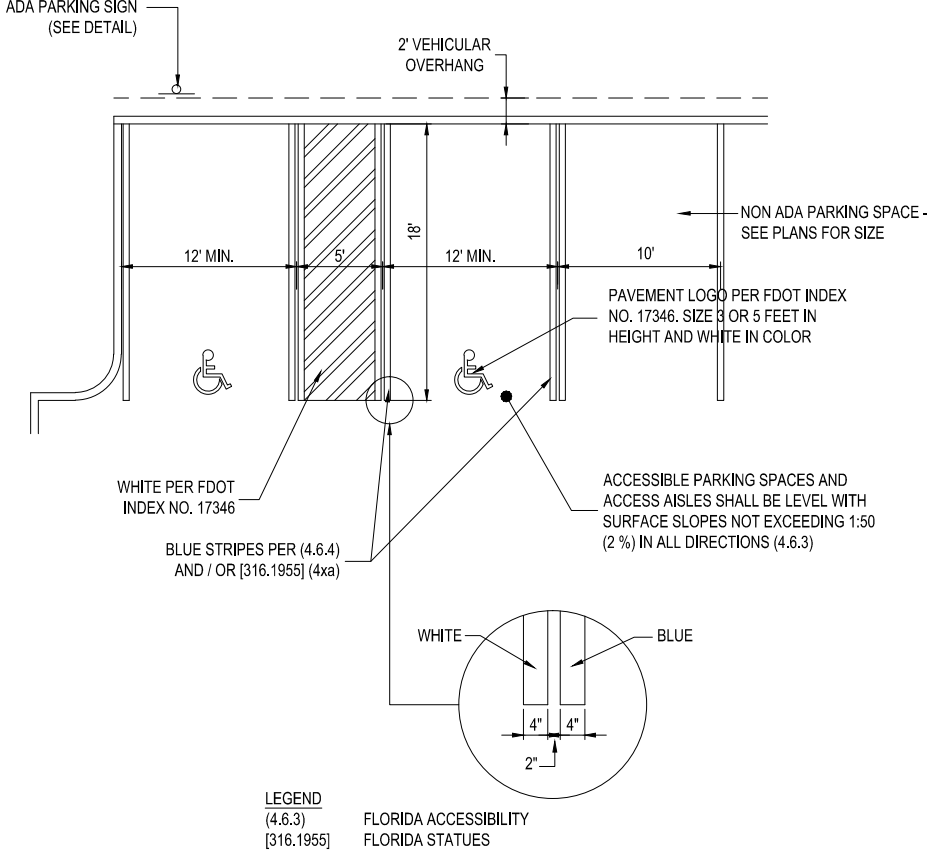
SCALE: NONE

4 VALLEY GUTTER DETAIL

SCALE: NONE

5 BOLLARD DETAIL

SCALE: NONE



6 ACCESSIBLE PARKING SPACE - ADA COMPLIANT

SCALE: NONE

7 PAVEMENT SAWCUT/MILLING DETAIL

SCALE: NONE

8 CONNECTION TO EXISTING PAVEMENT DETAIL

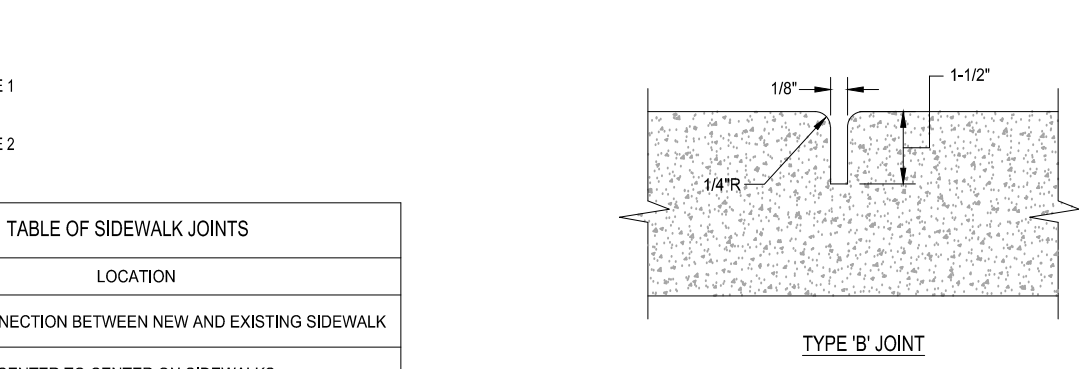
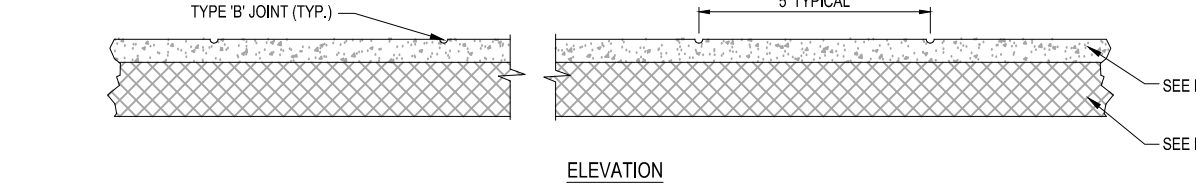
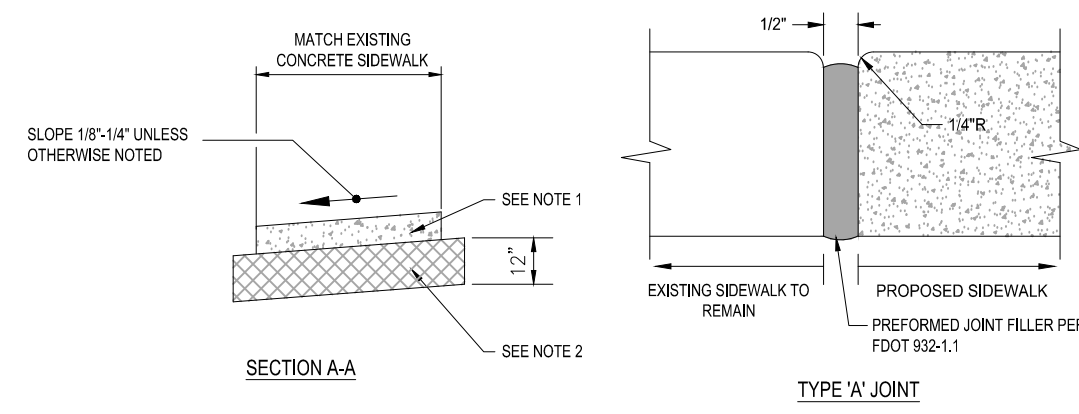
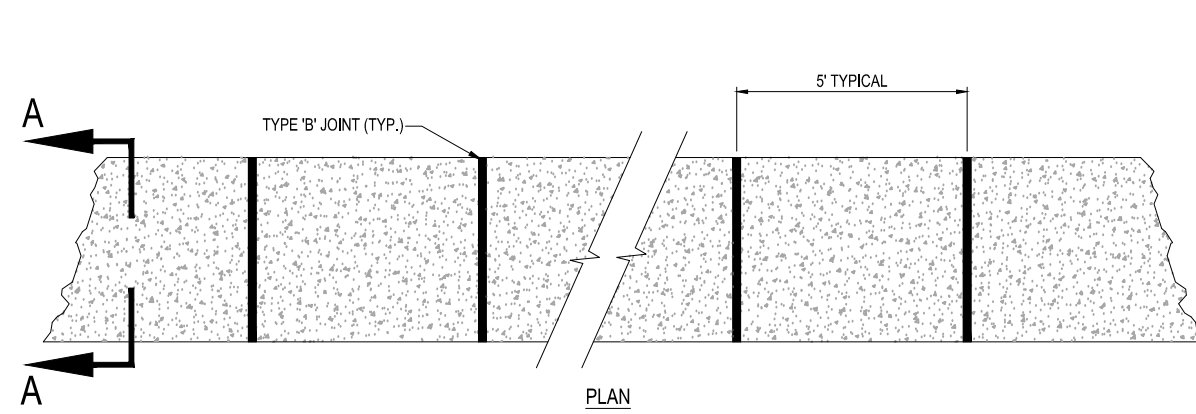
SCALE: NONE

9 THICKENED EDGE SIDEWALK DETAIL

SCALE: NONE

10 ADA CURB RAMP DETAIL - FDOT CR-A

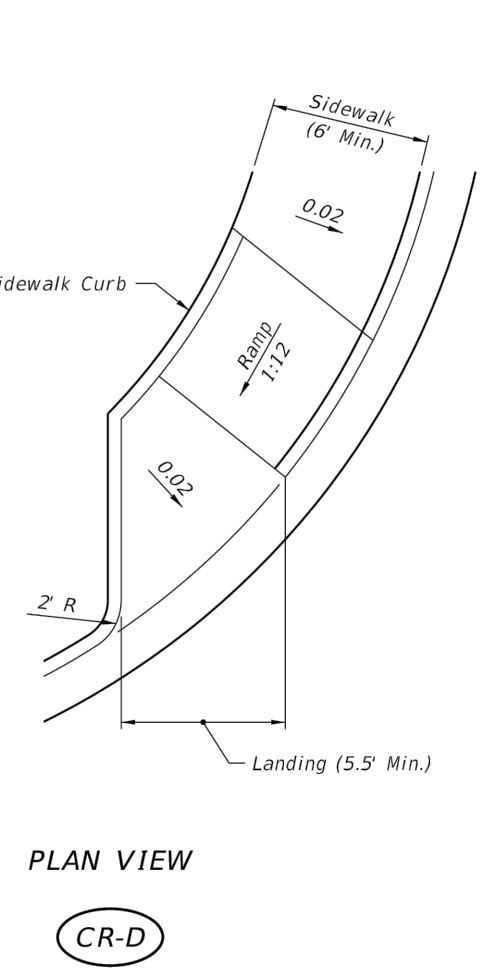
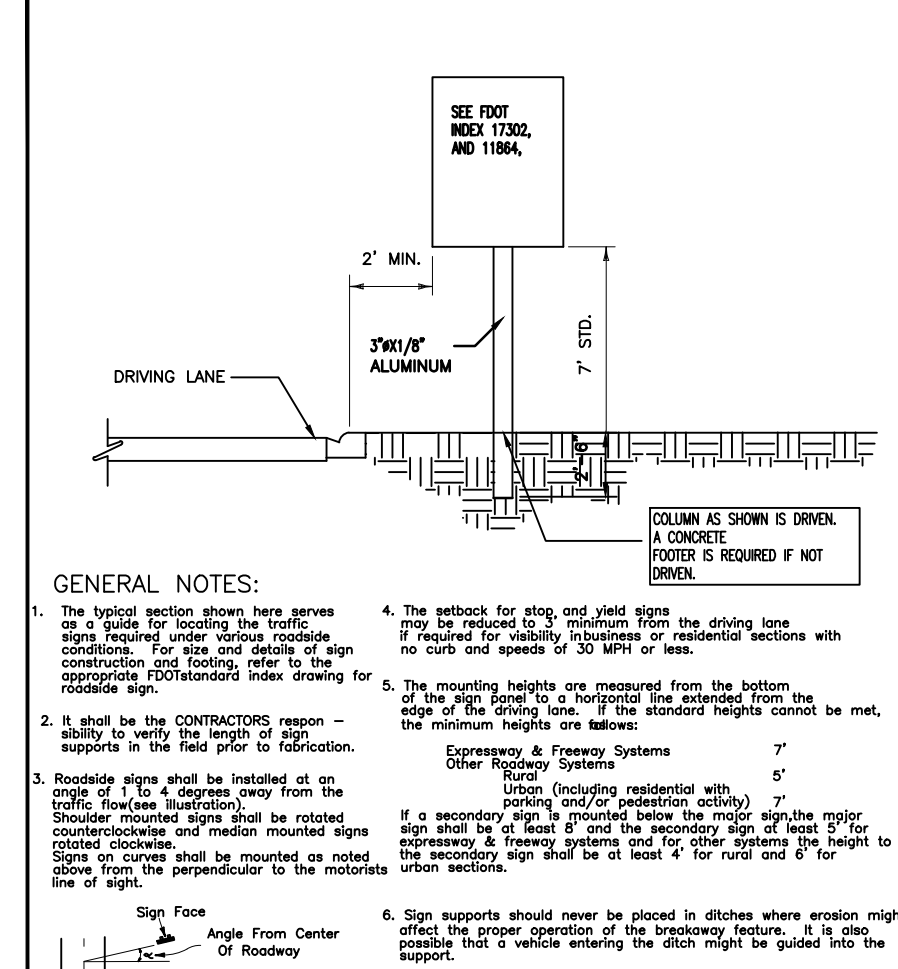
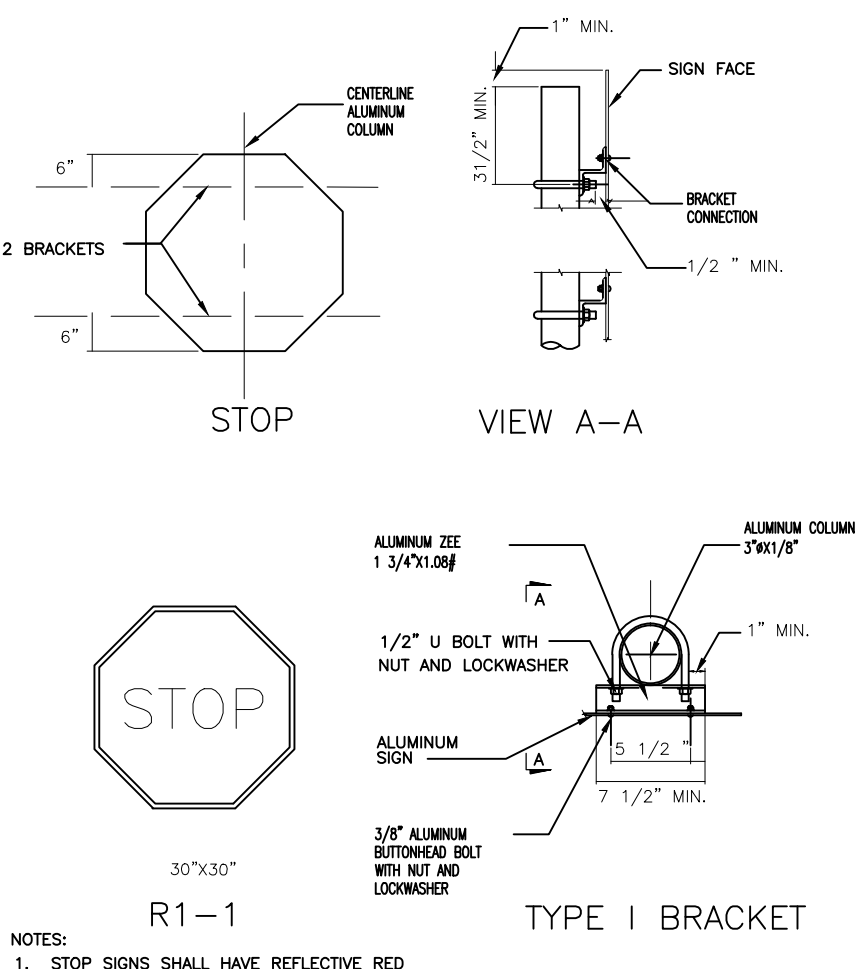
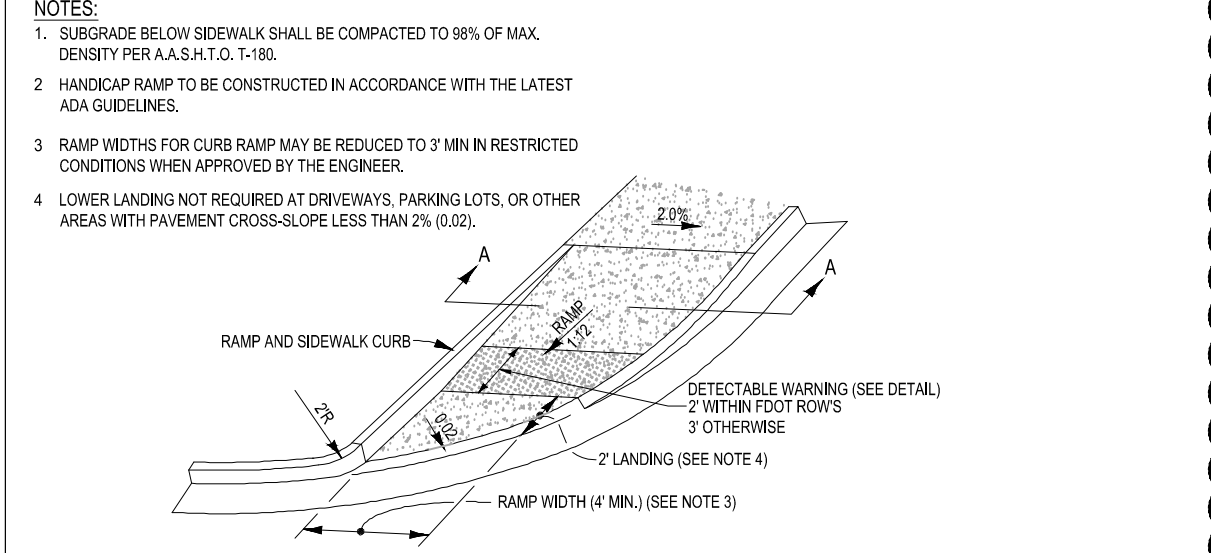
SCALE: NONE



NOTES:

- SIDEWALK SHALL BE 4" THICK EXCEPT IN DRIVEWAYS WHERE THE THICKNESS SHALL BE 6"
- SUBGRADE BELOW SIDEWALK SHALL BE COMPACTED TO 98% OF MAX. DENSITY PER A.A.S.H.T.O. T-190. (12" THICKNESS)
- CONCRETE STRENGTH SHALL BE MIN. 3000 PSI @ 28 DAYS.
- SIDEWALK REMOVAL & REPLACEMENTS TO CONSIST OF FULL FLAGS.
- PROVIDE EXPANSION JOINT (TYPE 'A') AT CONNECTIONS BETWEEN NEW AND EXISTING SIDEWALK.

TYPE	LOCATION
'A'	AT CONNECTION BETWEEN NEW AND EXISTING SIDEWALK
'B'	5 FEET CENTER TO CENTER ON SIDEWALKS.

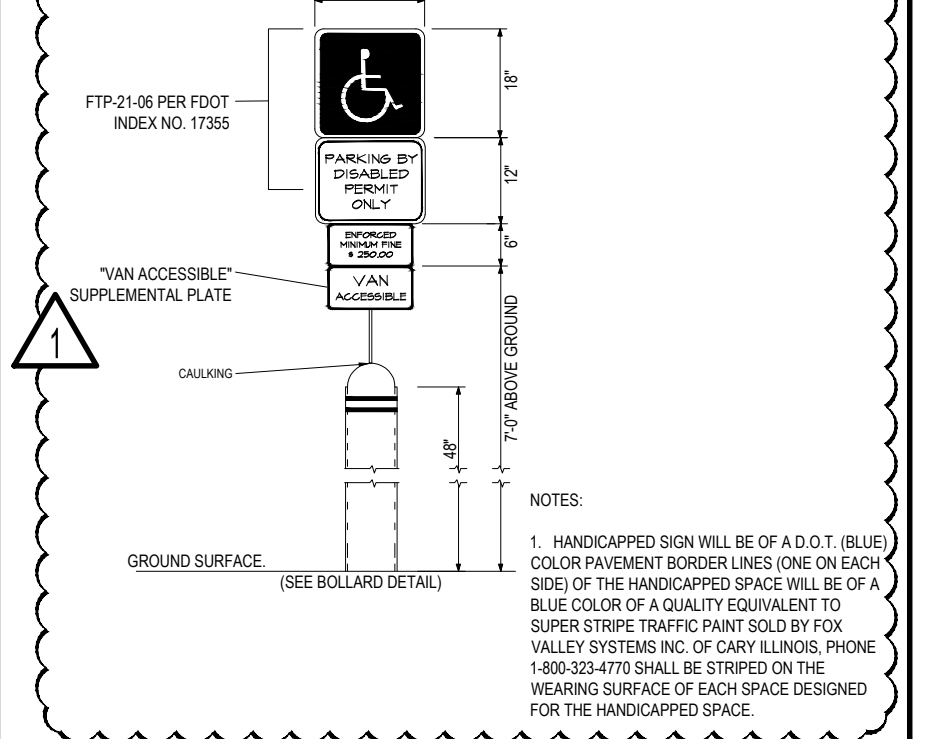


11 SIDEWALK DETAILS

SCALE: NONE

12 ADA CURB RAMP DETAIL - FDOT CR-G

SCALE: NONE



ADA ACCESSIBLE PARKING SIGNS (FL) N.T.S.

THOMAS ENGINEERING GROUP
 CIVIL ENGINEERS - PROJECT MANAGERS - LAND PLANNING - LANDSCAPE ARCHITECTS
 1000 CORPORATE DR. #480 W. KENNEDY BLVD. FT. 125 W. INDIANTOWN RD.
 FORT LAUDERDALE, FL 33304 FORT LAUDERDALE, FL 33409
 P: 954-202-7000 P: 954-379-4100
 WWW.THOMASENGINEERINGGROUP.COM

REVISIONS

REV.	DATE	COMMENT	BY:
1	02/9/16	PER DRC COMMENTS	MEC

811 KNOW WHAT'S BELOW ALWAYS CALL 811 BEFORE YOU DIG
 www.callsunshine.com

SITE ELEMENTS

PROJECT No.:	F140188
DRAWN BY:	AAM
CHECKED BY:	DATE: 07/28/15 (TYP.)
CAD I.D.:	F140188 - SITE DETAILS

SHELL / DAILY'S C-STORE No. 1810

FOR **FIRST COAST ENERGY**

CITY OF COCONUT CREEK FLORIDA

THOMAS ENGINEERING GROUP
 RADICE III
 1000 CORPORATE DRIVE, SUITE 250
 FORT LAUDERDALE, FL 33304
 PH: (954) 202-7000
 FX: (954) 202-7070
 www.ThomasEngineeringGroup.com

MICHAEL A. TROXELL
 PROFESSIONAL ENGINEER
 June 6, 2017
 FLORIDA LICENSE No. 52672
 FLORIDA BUSINESS CERT. OF AUTH. No. 27528

SHEET TITLE: **SITE DETAILS**
 SHEET NUMBER: **C-04**