

4%
OF CANOPY
WIDTH

West Elevation - S/F Shell Sign Cabinet

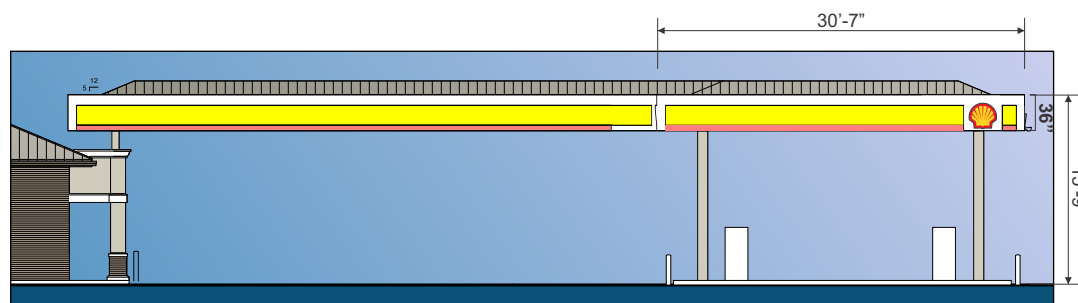
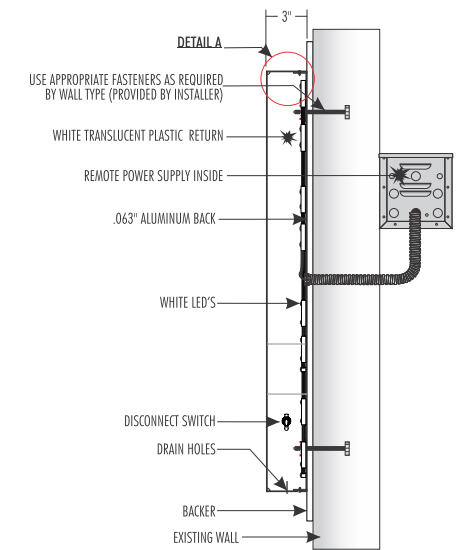
1/16" = 1'-0"

QTY: 1

Display Square Footage: 7.8

COLOR / MATERIALS SCHEDULE	
1	PMS 485C RED
2	PMS 185C RED
3	PMS 300C BLUE
4	PMS 116CV YELLOW
5	PMS 294C DARK BLUE
6	OPAQUE WHITE
7	GRAY B20-4011
8	WHITE ACRYLIC

COMPLIANT WITH SECTION
13.466.4 - CANOPY FUEL SIGNS.



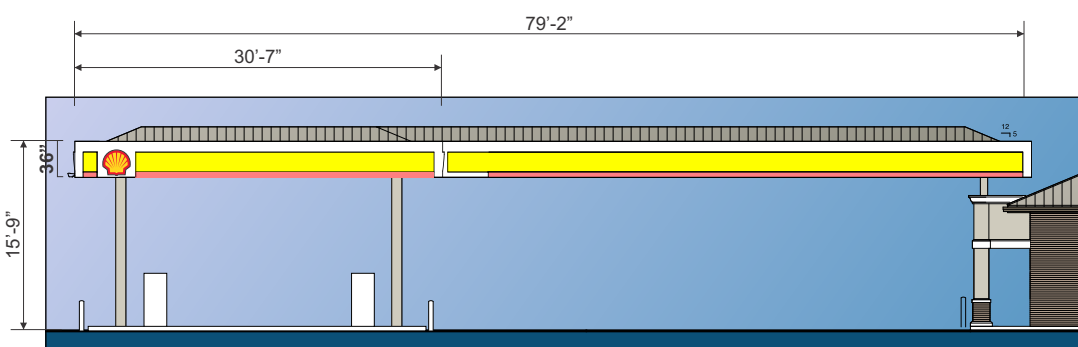
10%
OF CANOPY
WIDTH

North Elevation - S/F Shell Sign Cabinet

1/16" = 1'-0"

QTY: 1

Display Square Footage: 7.8

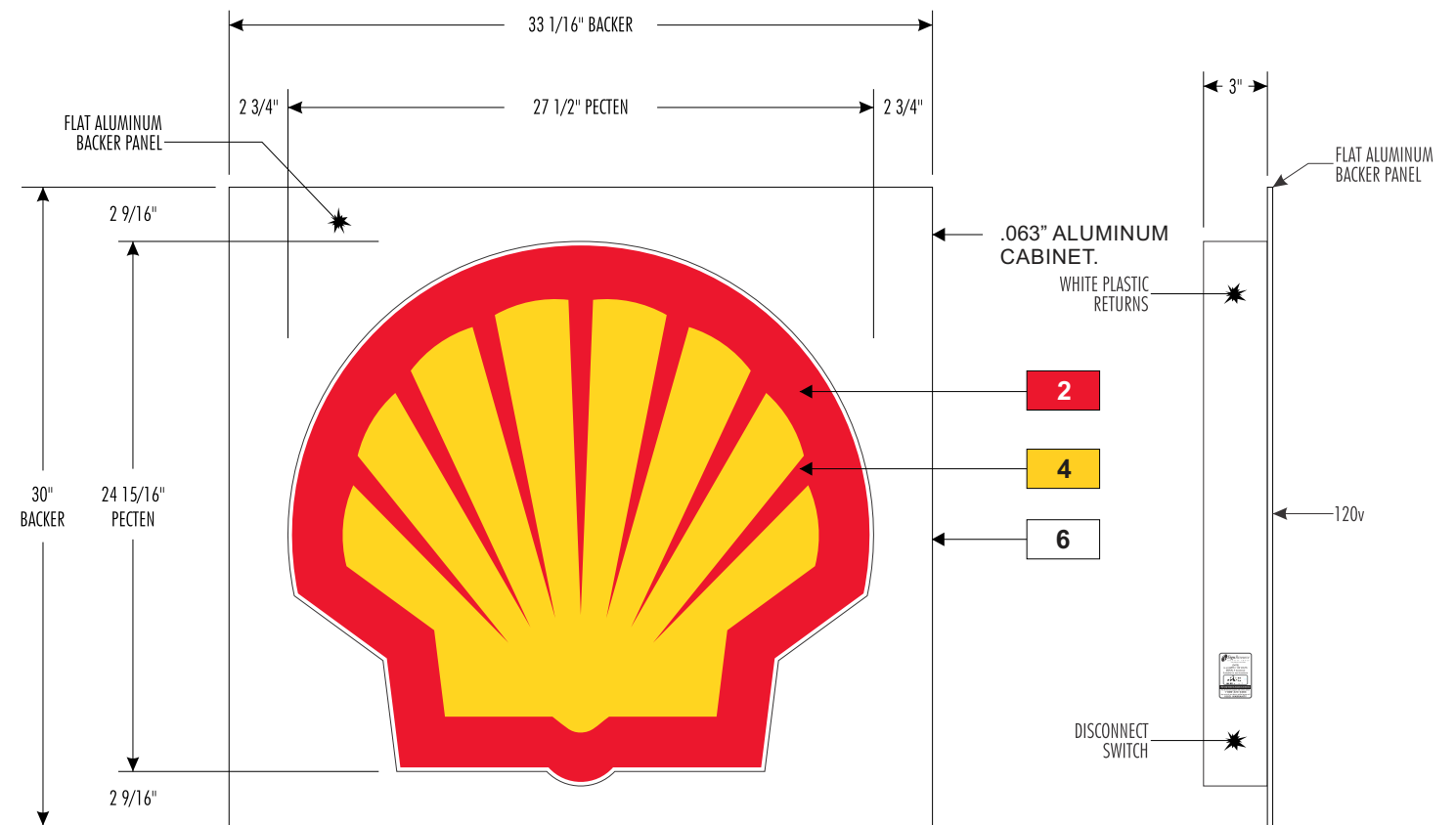


South Elevation - S/F Shell Sign Cabinet

1/16" = 1'-0"

QTY: 1

Display Square Footage: 7.8



FRONT VIEW

SIDE VIEW

F

Front Elevation and End View - S/F Shell Sign Cabinet

1" = 1'-0"

QTY: 3

Display Square Footage: 7.8 (EACH SIGN)

harbinger
sign of the future

5300 SHAD ROAD, JACKSONVILLE, FL. 32257 904.268.4681

#1810
4701 W. Sample Rd.
Coconut Creek, FL 33073

FCEI79-R8 #1810 Coconut Creek, FL DRC REVIEW

F:\First Coast Energy - (Daily's)\ART\Art CDR
FCEI79-R8 #1810 Coconut Creek, FL DRC REVIEW.cdr

05.04.15 : ORIGINAL CONCEPT
09.23.15 : R1 - various - tb
10.28.15 : R2 - carwash size - tb
04.29.16 : R3 - added "Daily's" c/l to back - tb
10.14.15 : R4 - "Daily's" c/l chg. to cabinet - tb
01.18.17 : R5 - reduced front c/l. removed gas canopy - tb
02.06.17 : R6 - added enter/exit to carwash - tb
05.25.17 : R7 - increased size of carwash signs - tb
07.11.17 : R8 - removed pectens / carwash layout - tb

Salesperson: RW

PM: JC

Designer: TB

Page: 9

customer approval

date:



Complies with
UL 48
CSA C22.2 No.207

THE SIGNS ON THESE PAGES HAVE BEEN DESIGNED
TO MEET OR EXCEED ALL APPLICABLE CODES OR
REQUIREMENTS OF THE NEC-2011 AND/OR
THE 2010 FBC AND/OR THE 2007 SFBC