

- ### CITY OF COCONUT CREEK STANDARD LANDSCAPE NOTES
- All landscape and specifications shall meet or exceed the minimum requirements as provided in the City of Coconut Creek Land Development Code. Plans are incomplete without written notes and specifications.
 - All planting material shall meet or exceed Florida Grade #1 as specified in Grades and Standards for Nursery Plants, current edition. Trees shall not be tipped, topped, or sheared prior to installation.
 - Landscape shall be placed to the side of abutting streets, canals, lakes or other lands.
 - All mechanical equipment, irrigation pump stations and equipment, FPL transformers, pool pumps, etc., must be screened on three (3) sides by landscape shrubs.
 - NOTE: The quantity of screening shrubs in addition to the required number of shrubs as provided in the code calculation table. All screening shrubs shall be planted for proper operation of equipment being screened and/or per the requirements of the utility as necessary. All hedge material required for screening purposes shall be planted with branches touching. Adjust on-center spacing as necessary and/or provide additional plants to provide an adequate screen.
 - Sight distance concerns must be maintained for clear sight visibility from thirty (30) inches to seventy-two (72) inches. Measurement shall be made from top of root ball planted at proper elevation.
 - Guys/bracing practices shall not permit nails, screws, wires, etc., to penetrate outer surfaces of trees, palms or other plant material. Trees, palms and plant material rejected due to this practice shall be replaced with the inspector's choice.
 - Buttup material, wire cages, plastic/canvas straps, etc., must be cut and removed for the top one-half (1/2) depth of the root ball. Trees and shrubs grown in grow bags or grow bag type material must have such material REMOVED ENTIRELY prior to planting the tree or shrub.
 - All plant material shall be free of pests, insects, disease, weeds, etc.
 - All required landscape material shall be installed using a planting soil mix comprised of a type appropriate to the individual proposed plant material and the native soil found on the site.
 - All plant material shall be planted at the proper depth, as originally grown and/or so the top of the root ball is flush or slightly above finished grade immediately after planting. All trees should provide trunk taper when properly planted at the correct planting depth.
 - All plant material shall be watered in at time of planting to eliminate air pockets in the root zone area. Upon completion of work, the site shall be cleaned of all debris, superfluous materials, and equipment caused by this permit to the satisfaction of the inspector.
 - Refer to Coconut Creek Fire Equipment Clear Zone diagram to maintain a safe zone fronting fire hydrants. Do not plant trees, shrubs or groundcover within Electric Meter Clear Zone. Provide a safe zone as described by the Electrical Inspector.
 - All landscaped areas shall be provided with an underground fully automatic irrigation system using pop-up sprinklers. System shall provide 100% coverage with 50% overlap (minimum) using rust free water, except preserved areas remaining in natural state. A rain sensor device or switch shall be installed that will override the irrigation system when adequate rainfall has occurred. Water shall not be directed toward or provided onto impervious surfaces and/or be designed or installed to throw water over an impervious surface such as a sidewalk, etc. Hours of operation for all irrigation systems shall be limited to 5:00 a.m. to 8:00 a.m., only or as may be further restricted by South Florida Water Management District or other jurisdictional authority.
 - Irrigation permits and plans shall be submitted for approval at time of building permits.
 - All non-single family or duplex irrigation systems other than City water systems shall require a South Florida Water Management District water use permit prior to issuance of an irrigation permit and installation of the irrigation system as required.
 - All site amenities to include site street lights, landscape common open space, irrigation common open space, buffers, berms, landscape entry features, etc., leading up to and including the most center and/or first certificate of occupancy may be completed and functional prior to issuance of the first requested certificate of occupancy.
 - The height of all required, designed and installed berms shall be to the highest adjacent curb whether it is the sidewalk, parking area, vehicular use area, surrounding ground, etc. Where a berm abuts a sidewalk, there shall be a one (1) foot level area adjacent to the sidewalk prior to the start of the berm.
 - An inspection is required prior to the backfilling of trees/palms in all parking medians and sidewalks.
- NOTE: THIS COMMENT SHEET IS TO BE PLACED ON ALL LANDSCAPE PLANS "AS IS".

CITY OF COCONUT CREEK, FL SEC 13-443 - CODE OF ORDINANCES - Minimum Landscape Requirements

ZONING: B-3 to PMDD
PROPOSED USE: Convenience Store with Fuel Pumps
TOTAL SITE AREA: 92,294 sq. ft. (2.12 Acres)

SEC. 13-443.6
 1 Tree & 5 Shrubs/1000 sq. ft. of Parcel Area NOT UTILIZED for structure or parking
 25,796 sq. ft.

SEC. 13-443.7 Special Provisions
Main Building
 For every 40 ft. of building frontage abutting parking or VUA (300')
 1 Tree
 20 Shrubs
 30 Ground Cover

Car Wash
 For every 40 ft. of building frontage abutting parking or VUA (154')
 1 Tree
 20 Shrubs
 30 Ground Cover

SEC. 13-443.119. Roadway Landscape Buffer Standards
Medians
 1 Tree/200' of Perimeter Buffer (10' width along p/s)
 (40) shrubs per two thousand (2,000) square feet
 Min. (3) different maintained tiers of landscape excluding required sod

SEC. 13-443.121. Interior Landscape Requirements
 1 Tree/10 Parking Spaces Provided (25 spaces)
 1 to 1.6 ft./100 sq. ft. of paved area (43,297.36 sq. ft.)

SEC. 13-443.131. Street Trees
 NY 47th Ave. & NW 37th St.
 Street trees at 1 Tree/40' of street frontage (498.82')
 (498.82/40) = 12.47 trees

MAIN STREET DESIGN STANDARDS: Frontage Road (Perimeter) Greenery
Outside Road
 1 Shade Tree 30' L of street frontage (Overhead utility line) (812.13')
 (812.13/30) = 27.07 trees

1 Accent Tree/700 s.f. (15,885.48 s.f.)
 (15,885.48 / 700) = 22.7 trees

40% of pervious area to be covered by Shrubs/Groundcover not to exceed 30" H.
 Note: Ex. SFVMD Swale limits avail. greenway area (15,885.48 s.f./40%) = 397.16 sq. ft.

Lyons Road
 1 Shade Tree 30' L of street frontage (Overhead utility line) (196.98')
 (196.98/30) = 6.57 trees

1 Accent Tree/700 s.f. (1537.84 s.f.)
 (1537.84 / 700) = 2.2 trees

40% of pervious area to be covered by Shrubs/Groundcover not to exceed 30" H.
 Note: Ex. SFVMD Swale limits avail. greenway area (1537.84 s.f./40%) = 384.46 sq. ft.

SEC. 13-443.144. Mitigation
 Replacement so that there is no loss of tree canopy coverage upon maturity
 3848.855 s.f. of Tree Canopy removed (3848.855 / 800) = 4.81 trees

TOTAL REQUIRED TREES:
 126 TREES
 146 TREES (96.5% NATIVE)
 EXCEEDS

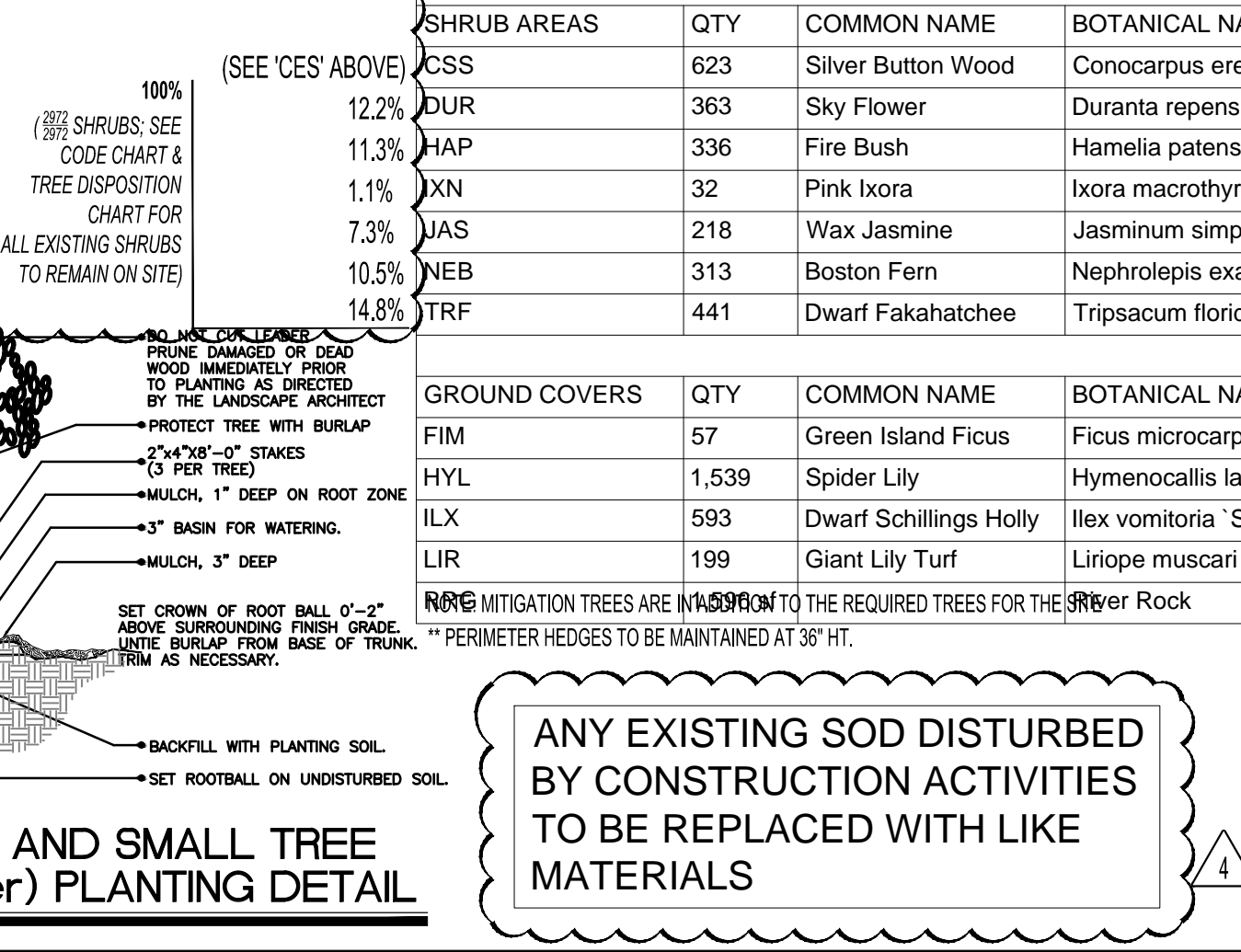
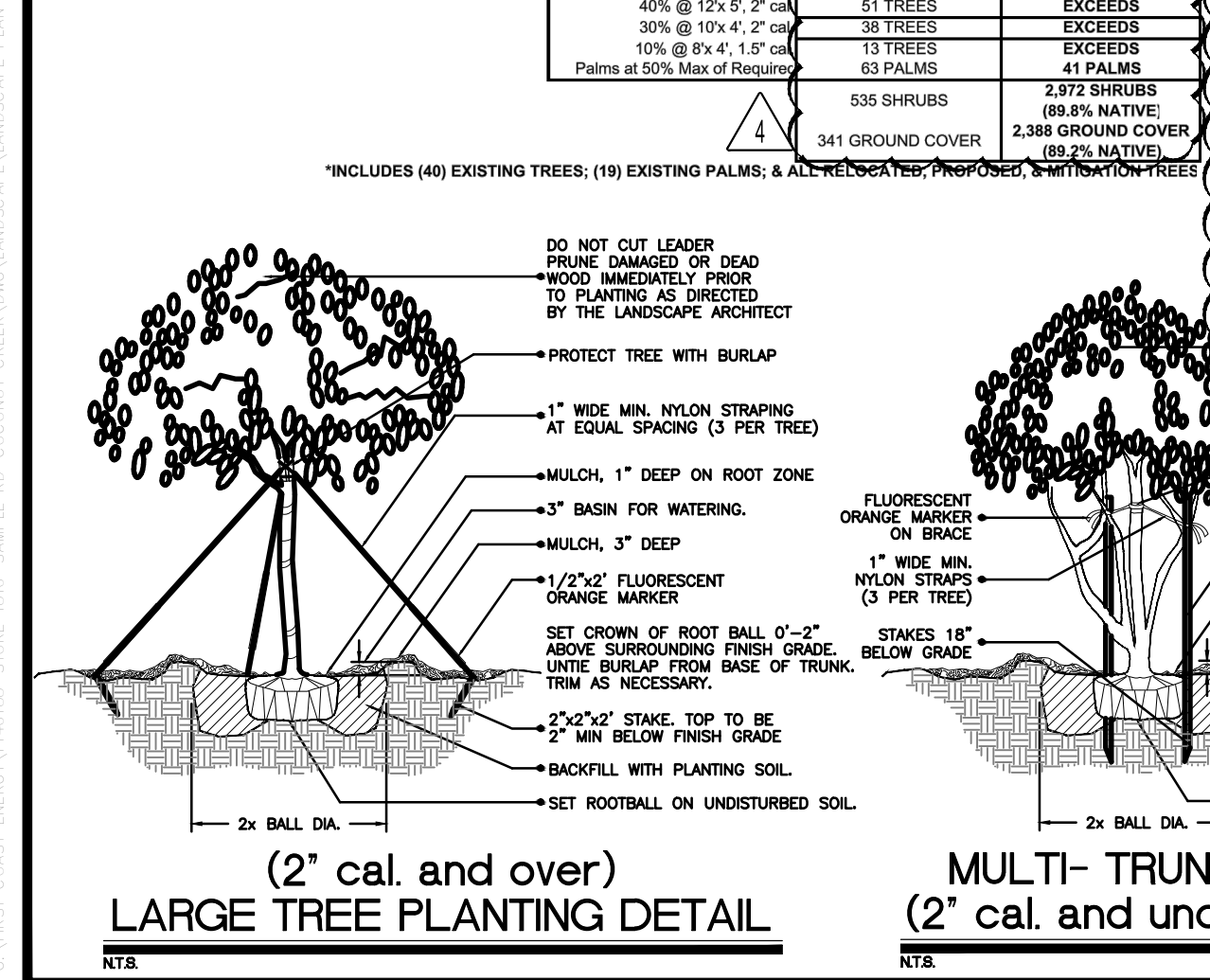
40% @ 12x5, 2" GA
 30% @ 10x4, 2" GA
 10% @ 8x4, 1.5" GA
 Palms at 50% Max of Required

100% (SEE 'CES' ABOVE)
 (SEE 'CE' ABOVE)
 (SEE 'IC' ABOVE)

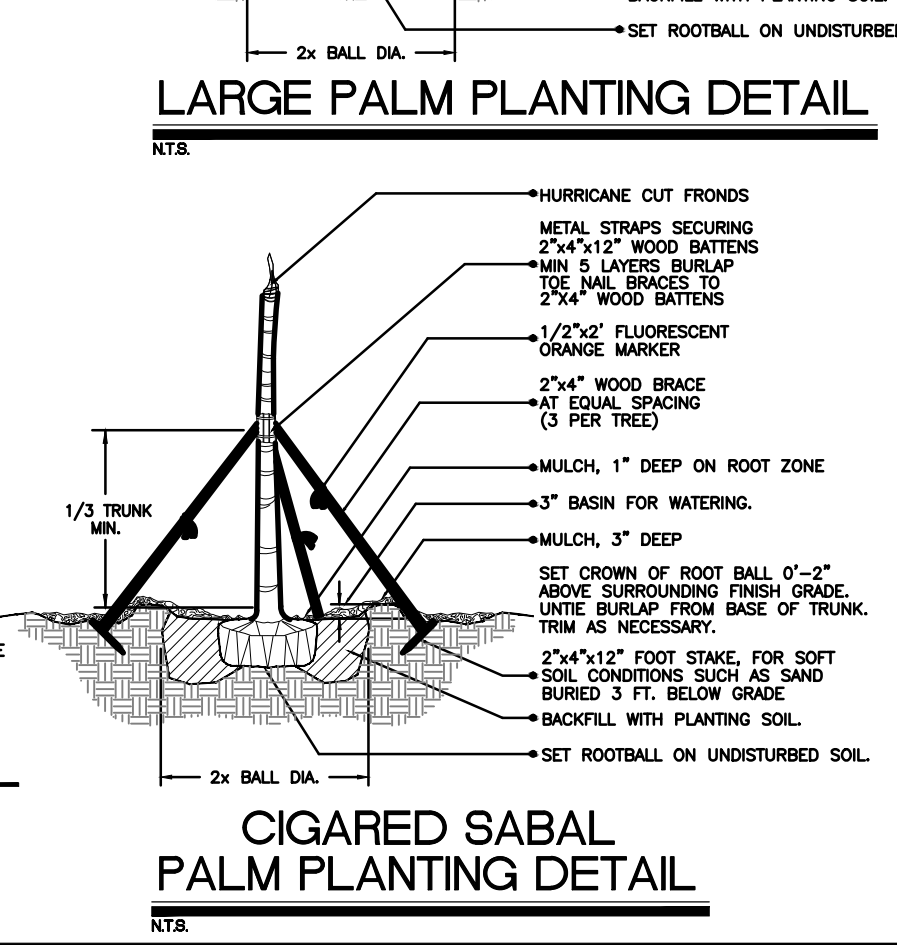
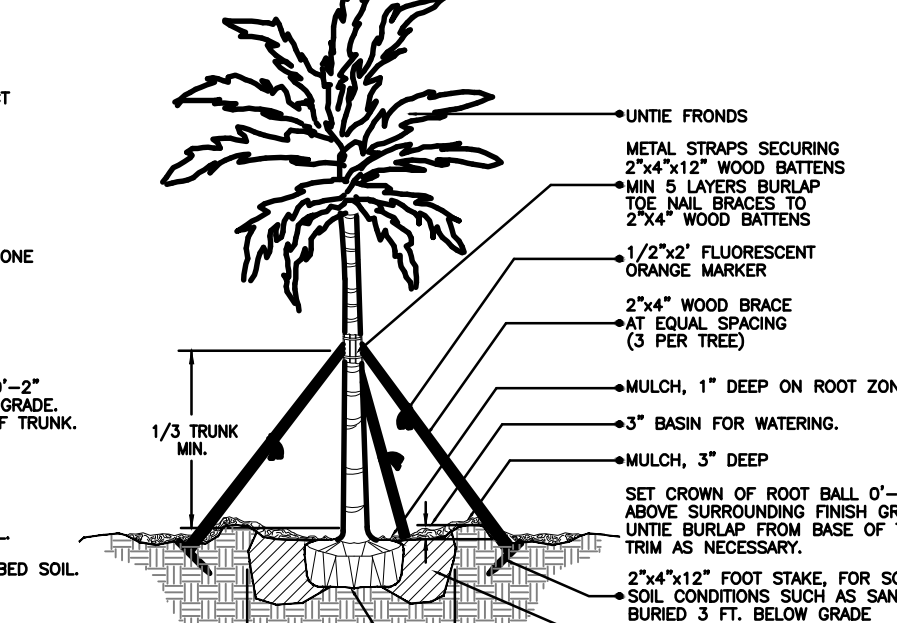
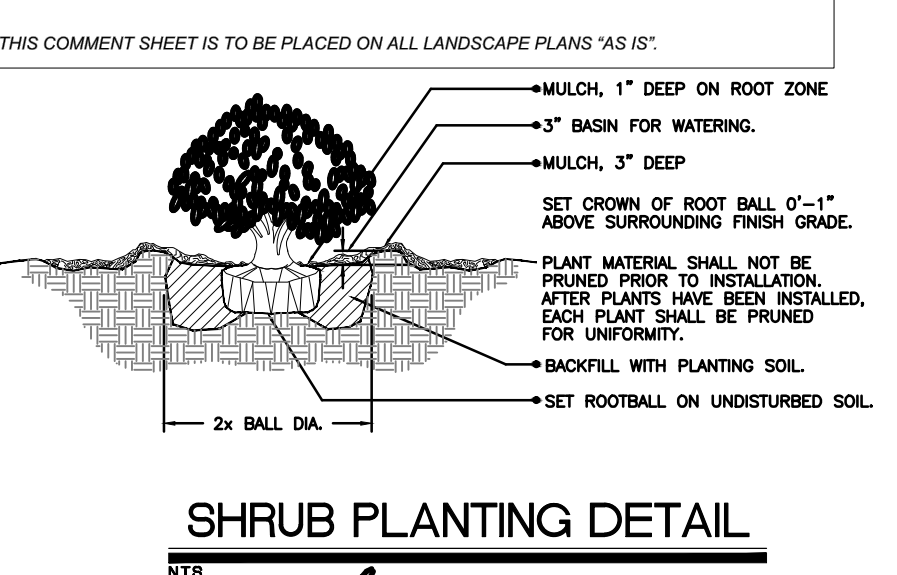
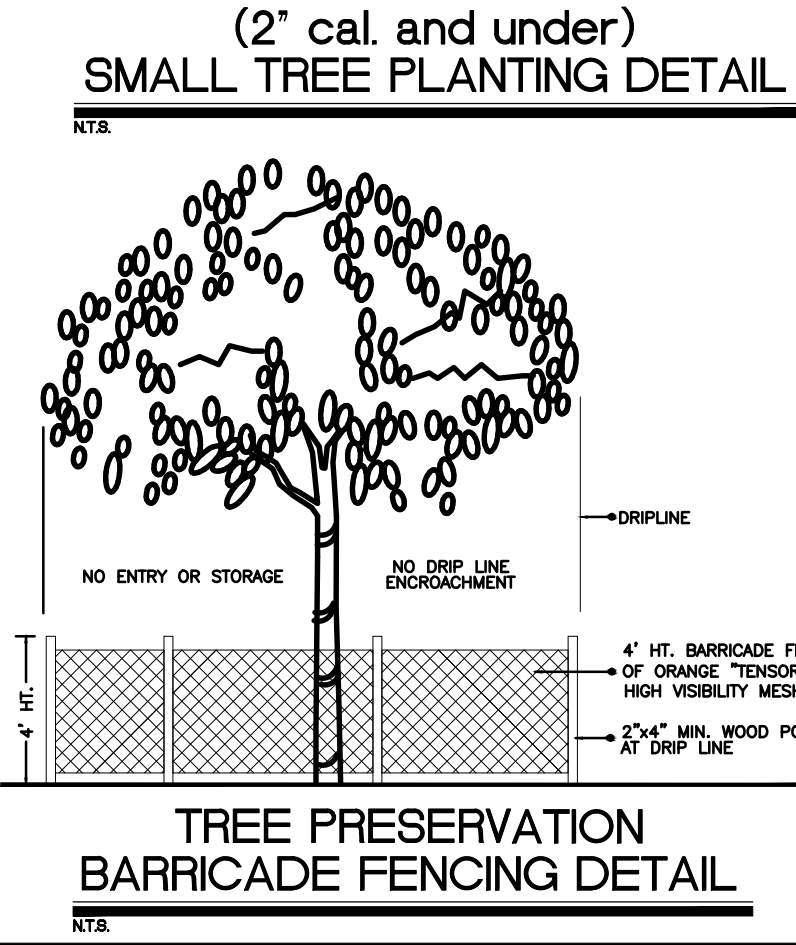
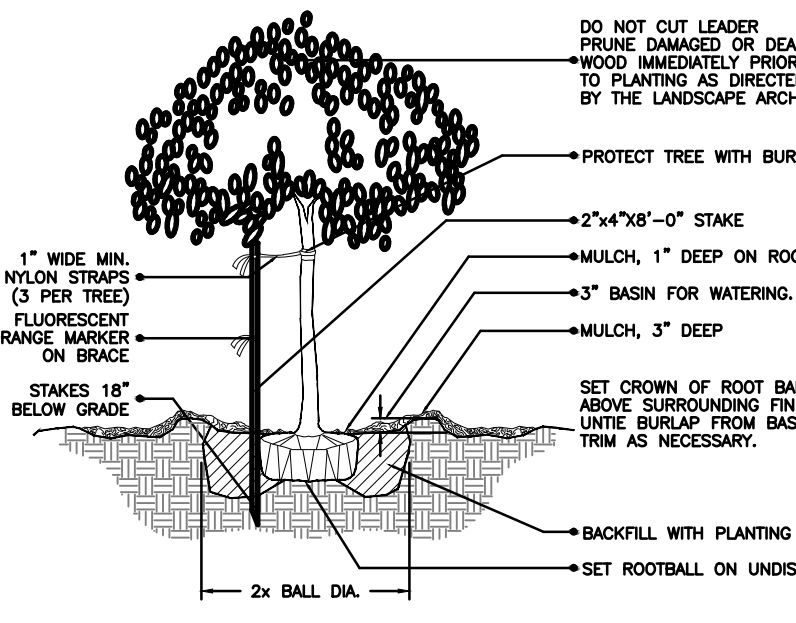
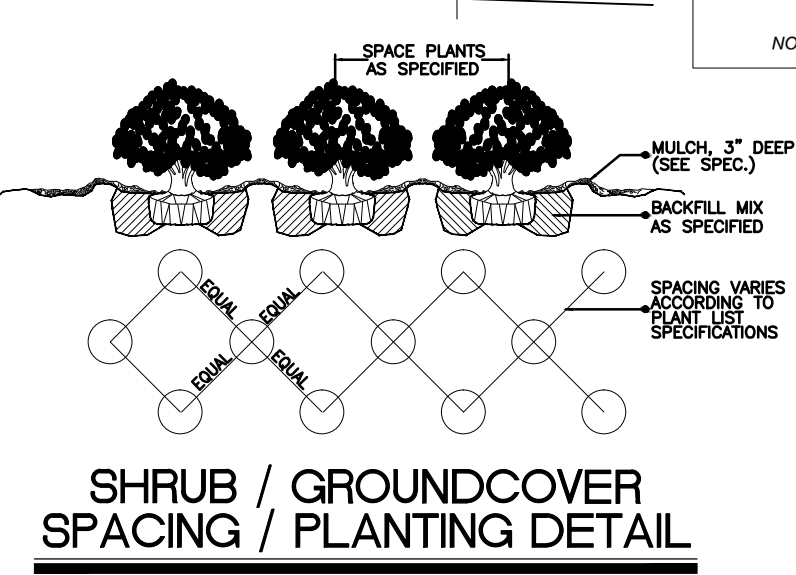
PLANT SCHEDULE

TREES	QTY	COMMON NAME	BOTANICAL NAME	SPECIFICATIONS	CAL/DBH	HEIGHT	SPREAD	NATIVE	XERIC	REMARKS	
AR	8	Red Maple	Acer rubrum	B & B	2.5" Cal	10' Ht	4'	Yes	Medium		
CE	4	Green Buttonwood	Conocarpus erectus	B & B	3" Cal	12' Ht	6'	Yes	High	5' CT	
CE-S	30	Silver Button Wood	Conocarpus erectus sericeus	B & B	2" Cal	8' Ht	4-5'	Yes	High	4' CT	
CS	2	Orange Geiger Tree	Cordia sebestena	NA	2" Cal	10' Ht	5'	Yes	High	4' CT	
C	1	Dahoon Holly	Ilex cassine	B & B	2.5" Cal	12' Ht	5-6'	Yes	High	6' CT	
LN	2	Crape Myrtle	Lagerstroemia x 'Natchez'	NA	2" Cal	8' Ht	4-5'	No	High	4' CT; Standard	
MG	3	Magnolia Blanchard	Magnolia grandiflora	B & B	3" Cal	12' Ht	5-6'	Yes	High	5' CT	
TC	1	Yellow Trumpet Tree	Tabebuia caribaea	B & B	3" Cal	12' Ht	5-6'	No	High	4' CT	
BSM	4	Jumbo Limbo	Bursera simaruba	B & B	3" Cal	12-14' Ht	5-6'	Yes	High	4' CT	
PEM	2	Slash Pine	Pinus Elliotti	B & B	2.5" Cal	12' Ht	5-6'	Yes	Medium		
QVM	1	Southern Live Oak	Quercus virginiana	B & B	2.5" Cal	12' Ht	4-5'	Yes	High	For mitigation	
TDM	6	Bald Cypress	Taxodium distichum	B & B	3" Cal	14' Ht	8'	Yes	High		
MITIGATION TREES	QTY	COMMON NAME	BOTANICAL NAME	SPECIFICATIONS	CAL/DBH	HEIGHT	SPREAD	NATIVE	XERIC	REMARKS	
	4	Jumbo Limbo	Bursera simaruba	B & B	3" Cal	12-14' Ht	5-6'	Yes	High	4' CT	
	2	Slash Pine	Pinus Elliotti	B & B	2.5" Cal	12' Ht	5-6'	Yes	Medium		
	1	Southern Live Oak	Quercus virginiana	B & B	2.5" Cal	12' Ht	4-5'	Yes	High	For mitigation	
	6	Bald Cypress	Taxodium distichum	B & B	3" Cal	14' Ht	8'	Yes	High		
RELOCATED TREES	QTY	COMMON NAME	BOTANICAL NAME	SPECIFICATIONS	CAL/DBH	HEIGHT	SPREAD	NATIVE	XERIC	REMARKS	
CER	1	Buttonwood	Conocarpus erectus	B & B	Varies	12' Ht	varies	Yes	High		
CR	3	Dahoon Holly	Ilex cassine	B & B	Varies	varies	varies	Yes	High	6' CT	
SPR	22	Cabbage Palmetto	Sabal palmetto	B & B	Varies	varies	18-22' oa	10'	Yes	Medium	
SHRUB DIVERSIFICATION CALCS	SHRUBS	QTY	COMMON NAME	BOTANICAL NAME	SPECIFICATIONS	SPACING	HEIGHT	SPREAD	NATIVE	XERIC	REMARKS
	CES	39	Silver Button Wood	Conocarpus erectus sericeus	NA	24"	24"	18-24"	Yes	High	Full to base
	CHH**	545	Red Tip Cocoplum	Chrysobalanus icaco 'Red Tip'	NA	24"	24"	18-24"	Yes	High	Full to base
	COT	16	Black Magic Ti Plant	Cordyline terminalis 'Black Magic'	7 gal	As Shown	30"	24"	No	Medium	3 ppp
	LAN	15	Crape Myrtle	Lagerstroemia x 'Natchez'	15 gal	1.5" Cal	5' ht.	3'	No	High	STANDARD
	MYC	11	Wax Myrtle	Myrica cerifera	n/a	30"	36"	30"	Yes	High	
	SPG	6	Purple Ground Orchid	Spathoglottis plicata 'Purple'	3 gal	As Shown	18" - 24"	18-24"	No	Medium	
	TRJ	14	Confederate Jasmine	Trachelospermum jasminoides 'Confederate'	15 gal	As Shown	5-6' Ht	4-5'	No	Medium	espallier to green screen
SHRUB AREAS	QTY	COMMON NAME	BOTANICAL NAME	SPECIFICATIONS	SPACING	HEIGHT	SPREAD	NATIVE	XERIC	REMARKS	
	CSS	623	Silver Button Wood	Conocarpus erectus sericeus	n/a	24"	18-24"	18-24"	Yes	High	
	DUR	363	Sly Flower	Duranta repens 'Dwarf Golden'	n/a	18"	16-18"	16-18"	Yes	High	Full
	HAP	336	Fire Bush	Hamelia patens	n/a	24"	18-24"	18-24"	Yes	High	Full to base
	IXN	32	Pink Ixora	Ixora macrothyrsa 'Nora Grant'	n/a	24"	18-24"	18-24"	No	Medium	Full to base
	JAS	218	Wax Jasmine	Jasminum simplicifolium	n/a	24"	24"	24"	No	Medium	
	NEB	313	Boston Fern	Nephrolepis exaltata 'Bostoniensis'	n/a	24"	18"	18"	Yes	High	
	TRF	441	Dwarf Fakahatchee	Tripsacum floridanum	n/a	24"	18"	18"	Yes	High	
GROUND COVERS	QTY	COMMON NAME	BOTANICAL NAME	SPECIFICATIONS	SPACING	HEIGHT	SPREAD	NATIVE	XERIC	REMARKS	
	FIM	1,539	Green Island Ficus	Ficus microcarpa 'Green Island'	n/a	18"	14-16"	14-16"	No	Medium	
	HYL	1,539	Spider Lily	Hymenocallis latifolia	n/a	18"	14-16"	14-16"	Yes	High	
	ILX	593	Dwarf Schillings Holly	Ilex vomitoria 'Schillings Dwarf'	n/a	18"	12-14"	12-14"	Yes	High	
	LIR	199	Giant Lily Turf	Liriope muscari	n/a	18"	12-14"	10-12"	No	High	Full clumps
					n/a					2-1/2" - 3"; Gray	

RELOCATED TREES ARE IN SHADY TO THE REQUIRED TREES FOR THE SPREADER ROCK PERIMETER HEDGES TO BE MAINTAINED AT 36" HT.



ANY EXISTING SOD DISTURBED BY CONSTRUCTION ACTIVITIES TO BE REPLACED WITH LIKE MATERIALS



THOMAS ENGINEERING GROUP

CIVIL ENGINEERS - PROJECT MANAGERS - LAND PLANNING - LANDSCAPE ARCHITECTS

1000 CORPORATE DR. FORT LAUDERDALE, FL 33304
 4890 W. KENNEDY BLVD. FT. LAUDERDALE, FL 33309
 125 W. INDIAN TOWN RD. JUPITER, FL 33408
 P. 954-202-7000 P. 954-203-7603 P. 813-379-4100

REVISIONS

REV.	DATE	COMMENT	BY
4	1/31/17	PER DRC COMMENTS	MDG

811

KNOW WHAT'S BELOW ALWAYS CALL 811 BEFORE YOU DIG

It's fast. It's free. It's the law.

www.callsunshine.com

PROJECT No.: F140198
 DRAWN BY: RJK
 CHECKED BY: MGD
 DATE: 07/14/2015
 DATE: 07/14/2015
 DATE: 07/14/2015
 DATE: 07/14/2015

PROJECT: SHELL / DAILY'S C-STORE No. 1810

FOR FIRST COST ENERGY

CITY OF COCONUT CREEK, FLORIDA

THOMAS ENGINEERING GROUP

RADICE III
 1000 CORPORATE DRIVE, SUITE 250
 FORT LAUDERDALE, FL 33304
 PH: (954) 202-7000
 FX: (954) 202-7070
 www.ThomasEngineeringGroup.com

MICHAEL D. GROSSWIRTH

REGISTERED LANDSCAPE ARCHITECT
 June 23, 2017
 FLORIDA LICENSE No. 6666871
 FLORIDA BUSINESS CERT. OF AUTH. No. 27528

SHEET TITLE: LANDSCAPE PLAN
 SHEET NUMBER: L-02