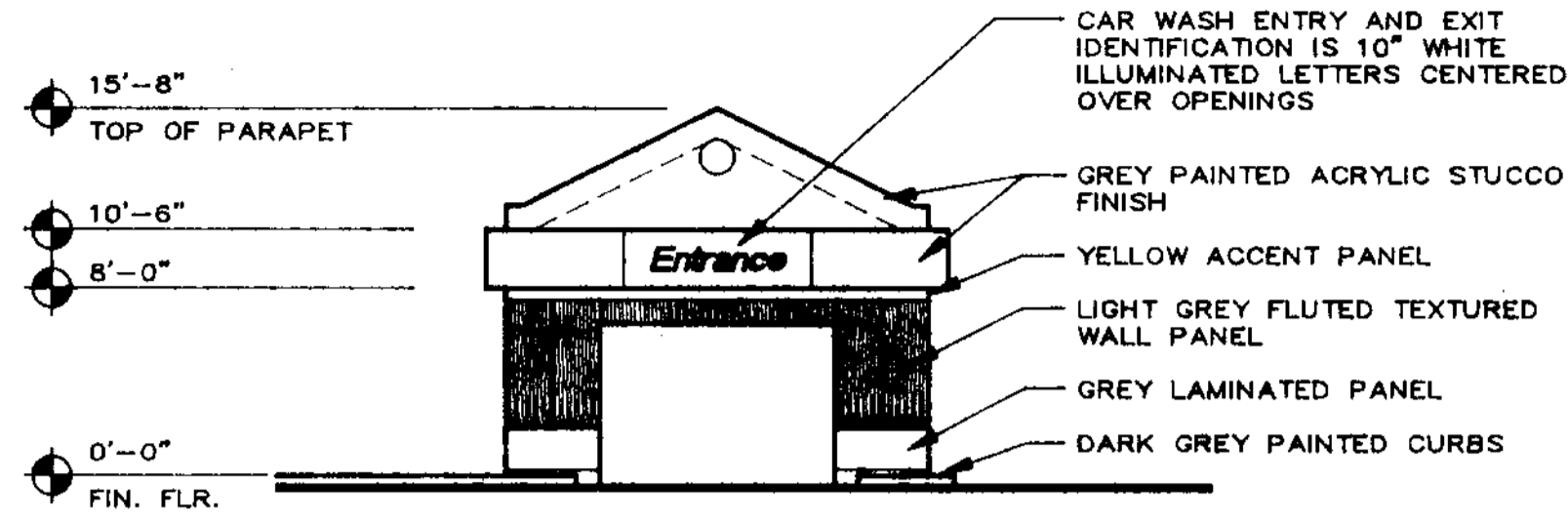
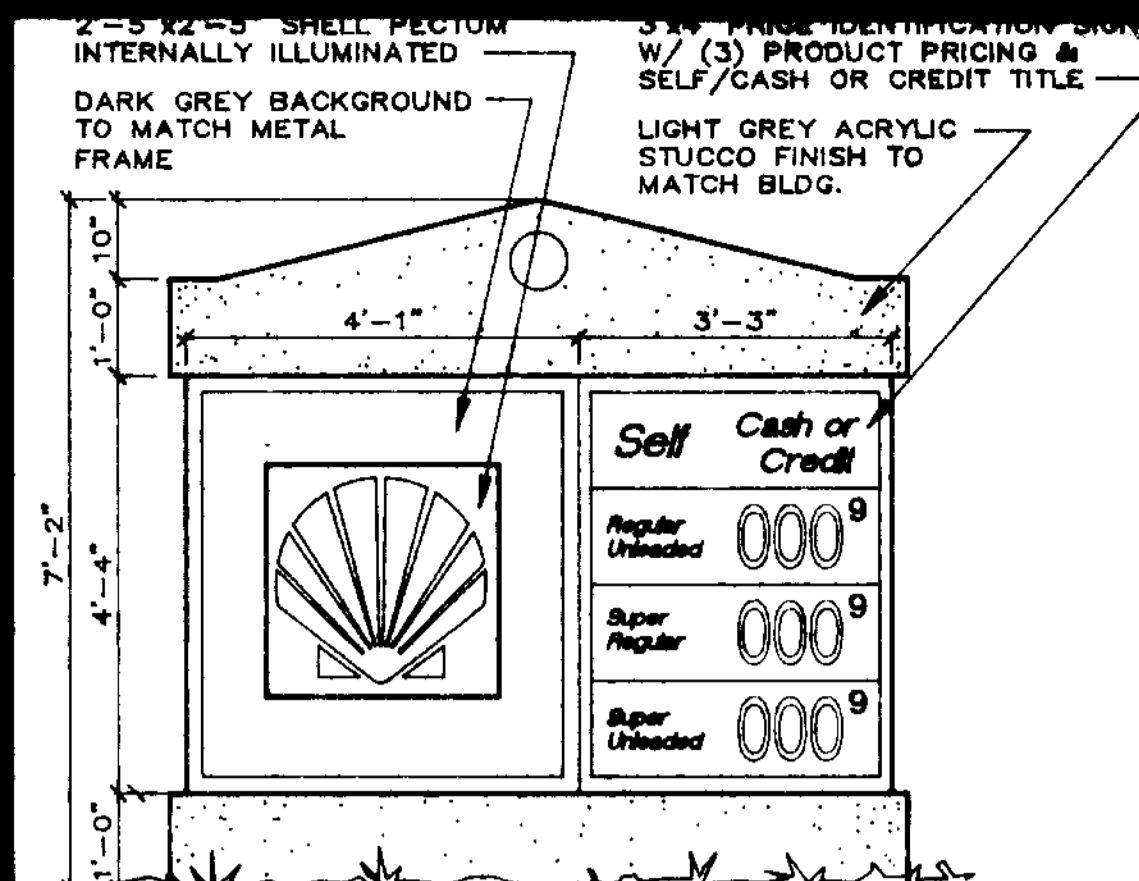


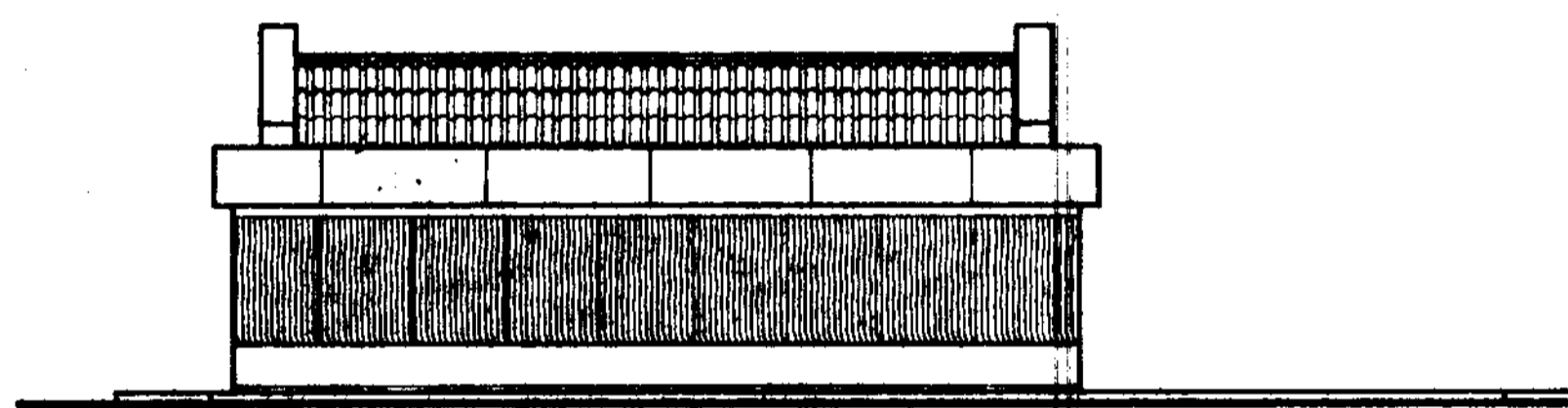
SOUTH ELEVATION - SAMPLE ROAD
SCALE: 1/8" = 1'-0"



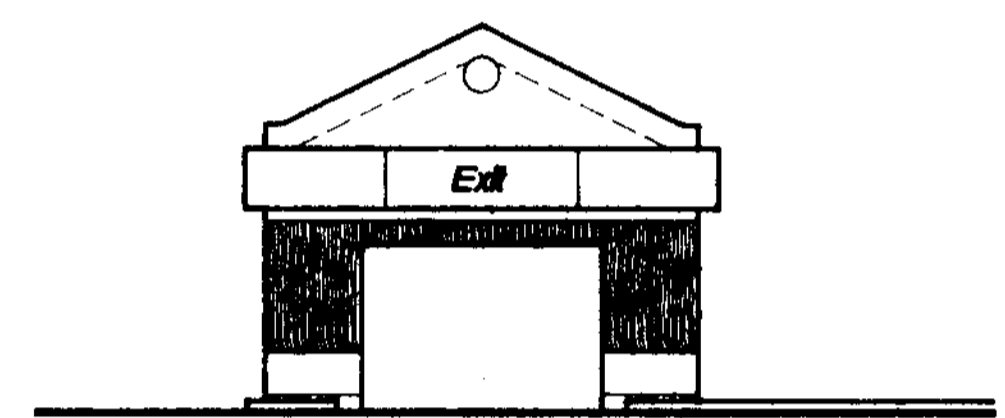
EAST ELEVATION
SCALE: 1/8" = 1'-0"



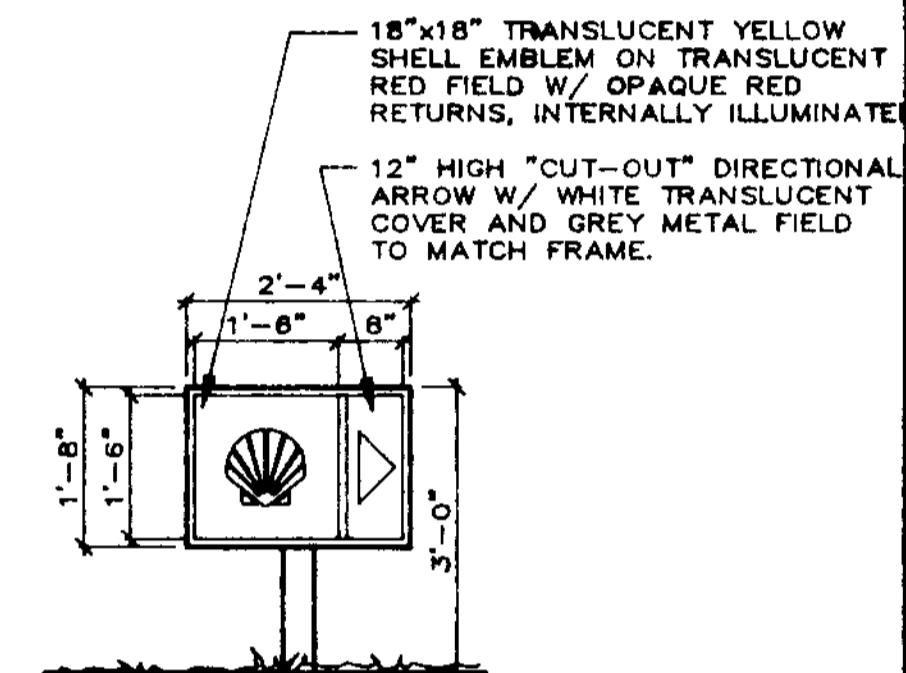
GROUND SIGN ELEV.
SCALE: 1/2" = 1'-0"



NORTH ELEVATION
SCALE: 1/8" = 1'-0"



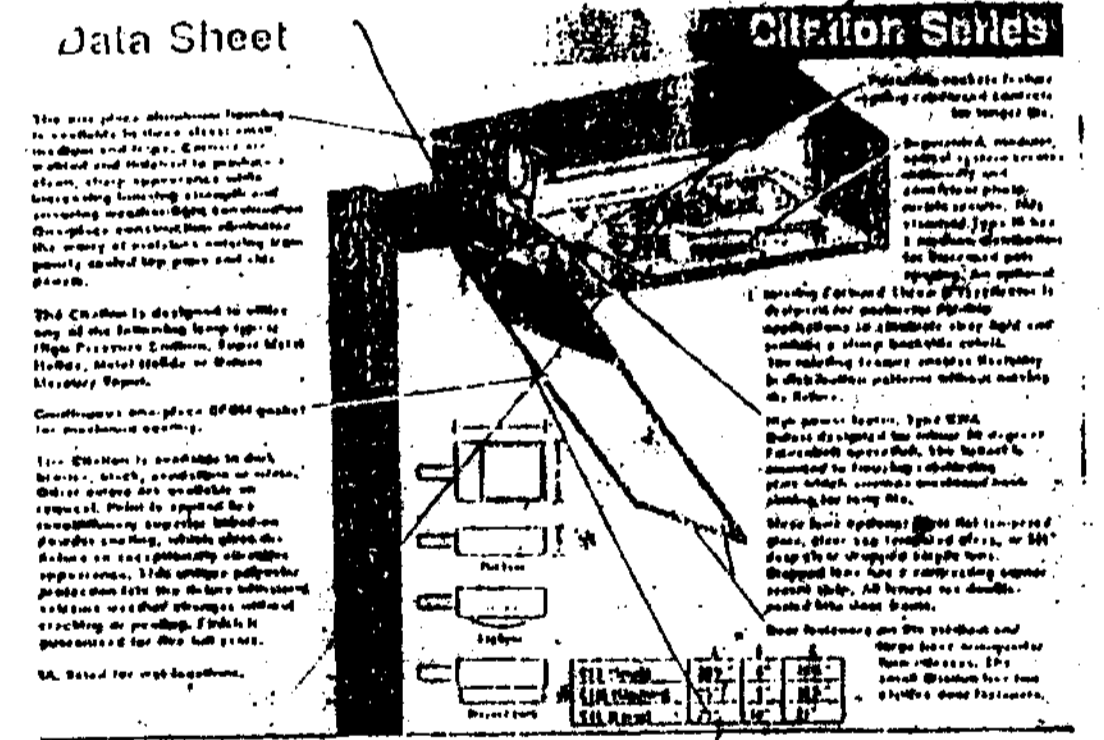
WEST ELEVATION
SCALE: 1/8" = 1'-0"



DIRECTIONAL SIGN ELEV.
SCALE: 1/2" = 1'-0"

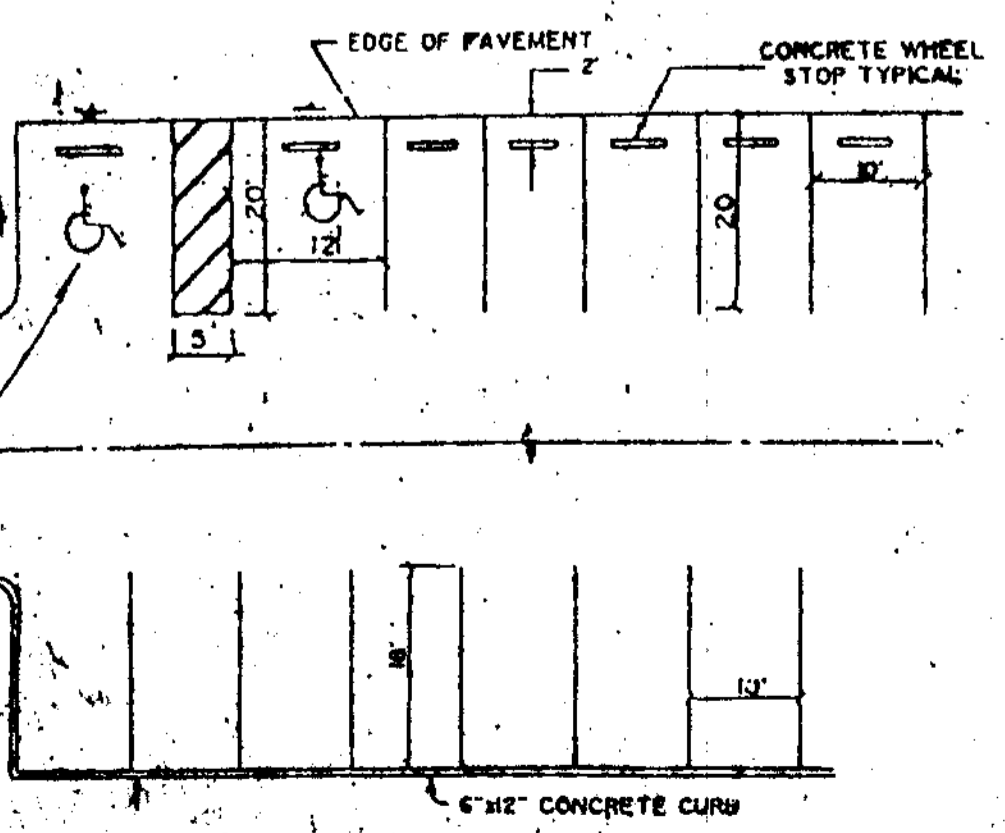
SIGN LEGEND

- A. "FOOD MART": 24" HIGH RAISED CHANNEL LETTERS WITH WHITE TRANSLUCENT COVERS & GRAY CHANNELS, INTERNALLY ILLUMINATED.
ALLOWABLE SIGN LENGTH: (36 L.F. x 75%) = 27 L.F.
ACTUAL SIGN LENGTH: 10'-2" LENGTH
ACTUAL SIGN AREA: 15.25 S.F.
- B. "CAR WASH": 18" HIGH RAISED CHANNEL LETTERS WITH WHITE TRANSLUCENT COVER & GRAY CHANNELS, INTERNALLY ILLUMINATED.
ALLOWABLE SIGN LENGTH: (36 L.F. x 75%) = 27 L.F.
ACTUAL SIGN LENGTH: 9'-3" LENGTH
ACTUAL SIGN AREA: 13.88 S.F.
- C. "SELF": 10" HIGH "CUT-OUT" LETTERS WITH WHITE TRANSLUCENT COVER AT ENDS OF SPANDREL PANELS, INTERNALLY ILLUMINATED.
ALLOWABLE SIGN AREA: 5.0 S.F.
ACTUAL SIGN LENGTH: 2'-0"
ACTUAL SIGN AREA: 1.67 S.F.
- D. "SHELL": PUMP ISLAND CANOPY FASCIA 18" HIGH RAISED CHANNEL LETTERS WITH WHITE TRANSLUCENT COVERS & GRAY CHANNEL RETURNS, INTERNALLY ILLUMINATED.
ALLOWABLE SIGN LENGTH: (50 L.F. x 75%) = 37.5 L.F.
ACTUAL SIGN LENGTH: 5'-10" LENGTH
ACTUAL SIGN AREA: 8.75 S.F.
- E. DIRECTIONAL SIGNS: 18"x18" TRANSLUCENT YELLOW SHELL EMBLEM ON TRANSLUCENT RED FIELD WITH OPAQUE RED RETURNS, INTERNALLY ILLUMINATED. 12" HIGH "CUT-OUT" DIRECTIONAL ARROW WITH WHITE TRANSLUCENT COVER & GRAY METAL FIELD TO MATCH FRAME.
- F. IDENTIFICATION SIGN: 2'-5"x2'-5" TRANSLUCENT YELLOW SHELL EMBLEM ON TRANSLUCENT RED FIELD WITH OPAQUE RED RETURNS, INTERNALLY ILLUMINATED. PRICE SIGNAGE TO BE 3"x4" BLACK LETTERING ON INTERNALLY ILLUMINATED TRANSLUCENT YELLOW FIELD WITH CHANGEABLE PRICE COPY, FRAMING AND FIELD AROUND SHELL EMBLEM SHALL BE DARK GRAY METAL.
- G. "ENTRANCE/EXIT": LOCATED ON ENDS OF CAR WASH, SHALL BE 10" HIGH "CUT-OUT" LETTERS WITH WHITE TRANSLUCENT ON FASCIA PANEL, INTERNALLY ILLUMINATED.

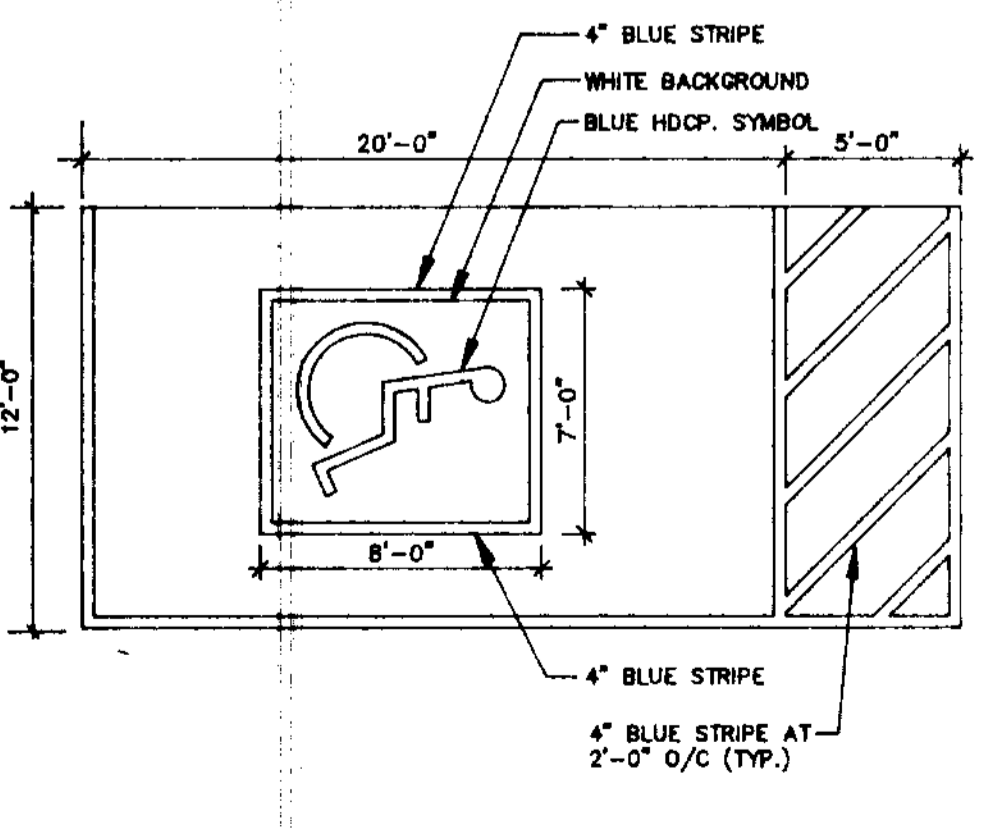


Pole and Bracket Specification:

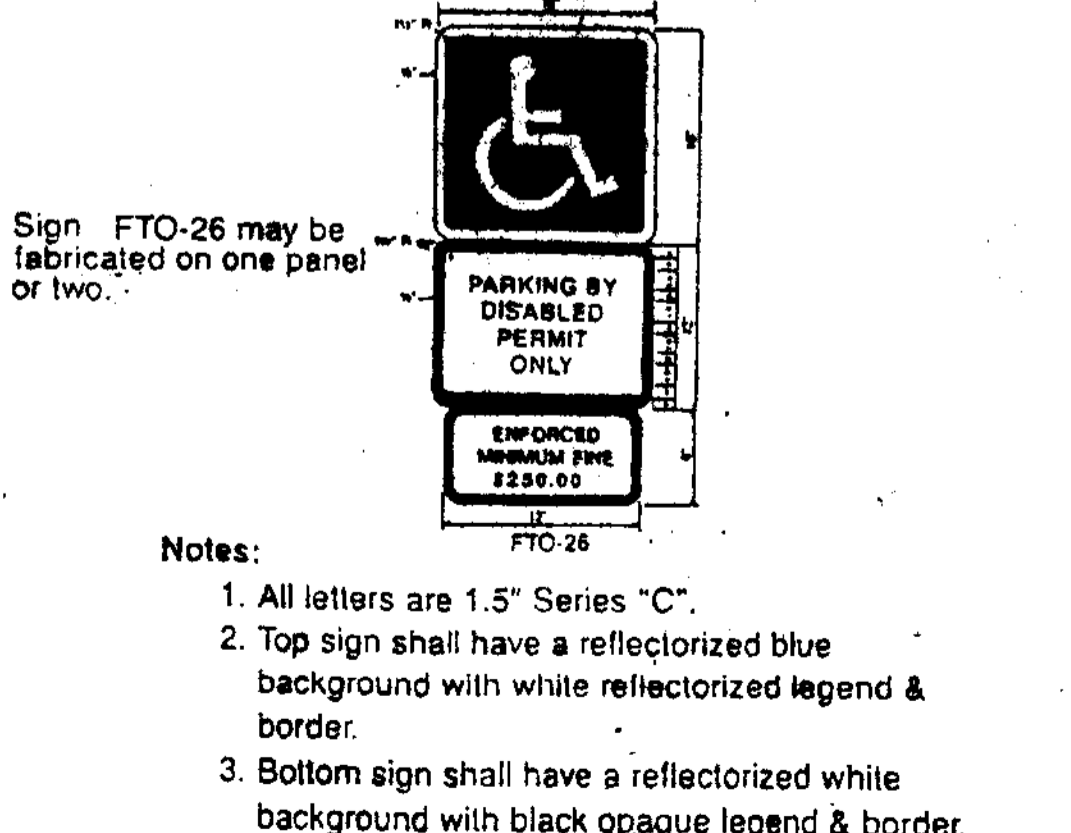
- POLES (Straight 4", 5" and 6" Sq. Poles)
- Steel Specifications:
 - Poles shall be aluminum clad A513/AA60 Grade B steel tubing with a minimum yield strength of 40,000 PSI.
 - Base to ADA/ANSI hot-dipped steel plate with a minimum yield strength of 40,000 PSI.
 - Structural steel to plate, brace, clamp, components or other fasteners are specified.
- Aluminum Specifications:
 - Poles shall be aluminum clad 6063-T5 alloy extruded aluminum tubing.
 - Base to AL6063-T5 high strength cast aluminum.
 - Fasteners shall be stainless steel or aluminum.
 - Structural steel to plate, brace, clamp, components or other fasteners are specified.
 - Two-piece fabricated aluminum base cover is standard.
- Specifications for Steel & Aluminum Poles:
 - Poles are to be finished with anodized aluminum with the standard double coat and 12 mils. of anodized aluminum base per specification. Anodized finish conforms with ASTM A623 with a minimum yield strength of 24,000 PSI.
 - Anodized to 12" above pole base; 48" above pole base is optional.
 - Vertical poles to be anodized to 11' above base; (27' not available).



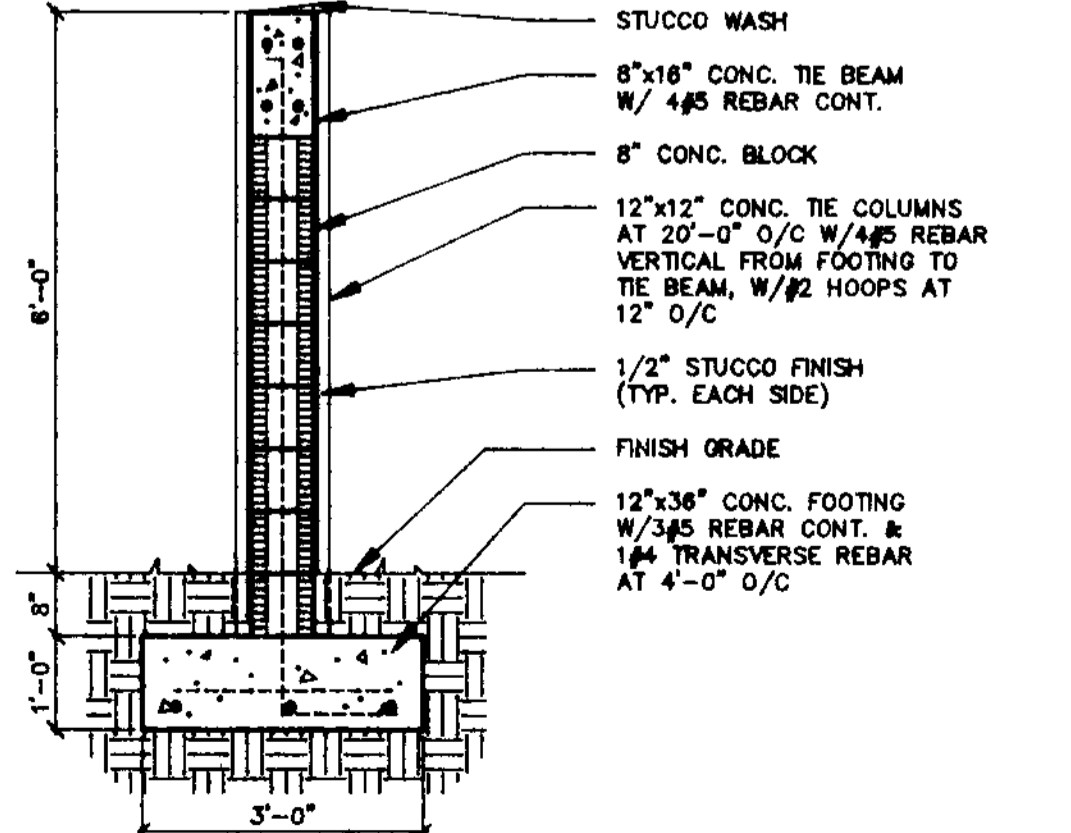
PARKING DETAILS (1) A-3



HDCP. PARKING (2) A-3



HANDICAP SIGN DETAIL (3) A-3
N.T.S. FLORIDA STATUTES, SECTION 316.1955



WALL DETAIL (SECTION) (4) A-3
1/2" = 1'-0"

ARCHITECT
JEFF FALKANGER & ASSOCIATES INCORPORATED
614 SOUTH FEDERAL HWY. FT. LAUDERDALE, FL 33301
(305) 784-6575
2000 MAIN ST., SUITE #801 FT. MYERS, FL 33901
(813) 332-1554

DESIGNED
DRAWN
CHECKED

REVISIONS
92079
OCT. 05, 1992

SHELL OIL CO.
AMERICAN EQUITY SITE DEVELOPERS

LYONS & SAMPLE RD.
COCONUT CREEK, FL.

EXTERIOR CAR WASH ELEVATIONS

SIGN ELEVATIONS

A-3 3