

General Notes

All plant material shall conform to the Standards for Florida No. 1 or better as given in "Grades and Standards for Florida Nursery Plants", Florida Department of Agriculture.

All landscaping shall be installed in a sound workmanship-like manner and according to accepted good planting procedures.

All open areas to receive 100% solid sod.

Plant material shall be irrigated with an automatic irrigation system. Such systems shall be operated by an irrigation controller capable of watering high water requirement areas on a different schedule from low water requirement areas, i.e. separate zones.

All planted beds or hedges to receive 2" shredded cypress bark mulch.

1. Scope of Work

A.) The scope of work includes furnishing all plants, materials, equipment and labor necessary for planting of plant materials indicated in the Drawings +/- specifications.

2. Materials

A.) Quality and Size - Plants shall have a habit of growth that is normal for the species and shall be measurements specified in the plant list, which are the minimum acceptable sizes. Plants shall be measured before pruning with branched in the normal position. Any necessary pruning shall be done at the time of planting. Requirements for branching, grading, quality, balling and burlapping of plants in the plant list generally follow the code of standards recommended by the American Association of Nurserymen, Inc. in the American Standard for Nursery Stock. Plants shall be free of weed or any other objectionable vegetation.

3. Fertilizer - Commercial Fertilizer

A.) Apply at the time of planting. Fertilizer shall be a high quality organic containing nitrogen, phosphoric acid, and potash in equal percentages of available plant food by weight.
B.) Apply at the following rates to planting bed and saucer area around each tree and shrub.

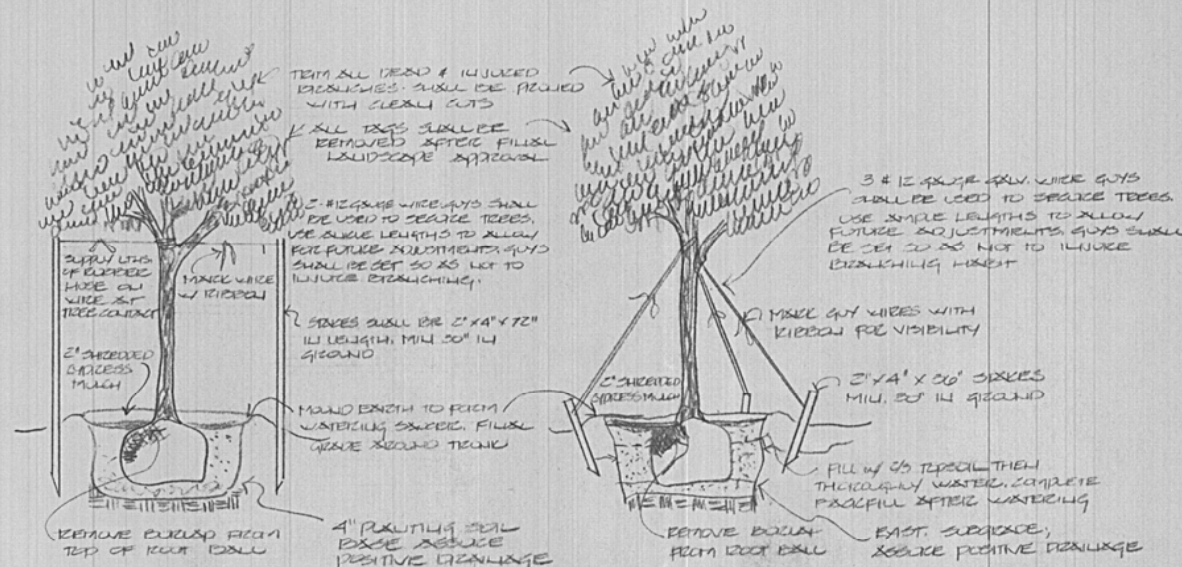
- Trees:
Caliber 4" or larger: 5 lbs. per inch of caliber
Caliber under 4": 3 lbs. per inch of caliber
Shrubs: 2 lbs. per 100 sq. ft. of area
Groundcovers: 2 lbs. per 100 sq. ft. of area
Palms: 1 lb. per inch of palm trunk caliber

5. Guying and Staking

A.) Guy and Stake all trees immediately after planting. Trees less than 1 1/2" caliber shall be staked in three directions with either double strands of no. 12 galvanized wire attached to an approved anchor driven below grade. All wires which may come in contact with any part of the tree shall be covered with new rubber hose. Place guys not less than 1/3 of the height of the tree above finished grade and above substantial limbs one inch or more in diameter, if possible. All hoses shall be interlocked around tree trunk. Place anchors so that guys are equally spaced and at 45 degree angles to horizontal. Keep guys tight until project completion.
B.) Alternate Staking Method - Cleats banded to the tree and stakes nailed to the cleats. No nails or fasteners shall directly penetrate the trunk. Wood battens 2 x 4" 12" length shall be attached to the trunk but are to be separated from the trunk by a minimum of 4" of burlap. Stakes shall be 2" x 2" pine cut to a length of 5-6' with a 45 degree cut on one end. Stakes shall be evenly spaced around each tree. Stakes shall be properly secured.

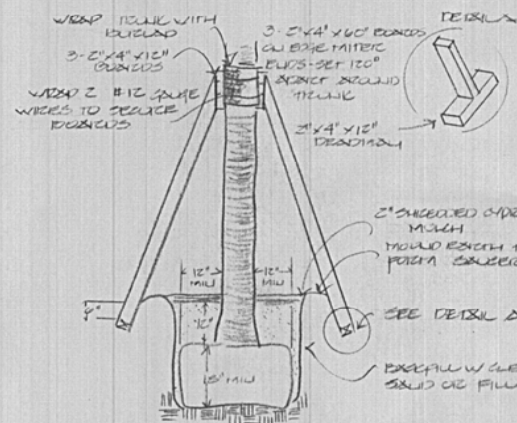
6. Warranty

A.) All trees and palms will be guaranteed for a period of six months commencing with the date of acceptance.
B.) All bed plantings, groundcovers shall be guaranteed for a period of 90 days.



**PLANTING & STAKING DETAIL
TREES LESS THAN 2" CALIBER
(8-10' HT. MAX.)**

**PLANTING & STAKING DETAIL
TREES 2" CALIBER & GREATER
(TREES OVER 10' HT.)**



ADDITIONAL NOTES:

AS PER CITY OF COCONUT CREEK LANDSCAPE ORDINANCE SEC 13-443-114 ALL DRAINAGES, AIR UNITS, SPRINKLER PUMPS & ELECTRICAL TRANSFORMERS SHALL BE SCREENED ON THREE (3) SIDES. MIN. 3' HGT. & 18" DIA. AT THE TIME OF PLANTING, & SHALL EXCEED THE VERTICAL HEIGHT OF THE OBJECT BY AT LEAST 6" WITHIN TWO (2) YEARS OF ISSUING

AS PER CITY OF COCONUT CREEK LANDSCAPE ORDINANCE SEC. 13-443 (141-C) RIGHT DISTANCE OF LANDSCAPING ADJACENT PUBLIC RIGHTS OF WAY AND POINTS OF ACCESS SHALL BE MAINTAINED.

A. LANDSCAPE SHALL BE PLANTED TO EDGE OF SEPARATING STREETS, CANALS, LAKES OR OTHER BODIES.

D. ALL MECHANICAL EQUIPMENT, AIR CONDITIONING, IRRIGATION PUMPS, PA TRANSFORMERS, MUST BE SCREENED ON THREE (3) SIDES BY LANDSCAPE SCREENS.

C. SITE DISTANCE SCREENS MUST BE MAINTAINED FOR CLEAR VISIBILITY FROM THIRTY (30) INCHES TO SEVENTY-TWO (72) INCHES, TREE TRUNKS EXCLUDED

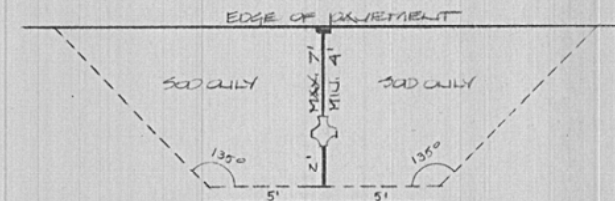
D. GUYING & STAKING DEVICES SHALL NOT PENETRATE WAILS, SCREENS, WIRES, ETC TO PENETRATE OTHER SURFACE OF PAINT OR TREE. TREES OR PAINTS REJECTED DUE TO THIS PENETRATION SHALL BE REPLACED WITH INSPECTOR ON SITE.

E. BURLAP MATERIAL, WIRE CAGES & PLASTIC SHEETS SHALL BE CUT & REMOVED FROM TOP ONE-HALF (1/2) OF ROOT BALL

F. ALL PLANTING MATERIAL SHALL MEET OR EXCEED FLORIDA GRADE #1 AS SPECIFIED IN GRASSES & SHRUBS FOR NURSERY PLANTS & PALM II, PALMS & TREES, CURRENT EDITION

5. ALL LANDSCAPE AND SPECIFICATIONS SHALL MEET OR EXCEED THE MINIMUM REQUIREMENTS AS SHOWN IN THE CITY OF COCONUT CREEK LAND DEVELOPMENT CODE.

REQUIREMENTS APPLYING TO FIRE HYDRANTS, FIRE COLLECTIONS AND ANY OTHER FIRE EQUIPMENT FOR UTILIZING FIRE HOSE, ON PUBLIC OR PRIVATE PROPERTY.



FIRE HYDRANT CLEAR EDGE

BY THE JURISDICTION OF THE SOUTH FLORIDA FIRE PREVENTION CODE SECTION 0211.2 THE CLEAR ZONE SHALL BE FREE OF LANDSCAPE (EXCEPT SO2), MAILBOXES, FENCING, LAMP POSTS AND ALL OTHER OBJECTS EXCEPT OTHER FIRE FIGHTING EQUIP.



Sunny State Nursery and Landscape Co.

| SPECIFICATIONS | | | |
|----------------|-----------|----|------|
| SCALE | REVISIONS | BY | DATE |
| DATE | | | |
| DRW. NO. | | | |
| DATE | | | |
| TITLE | | | |