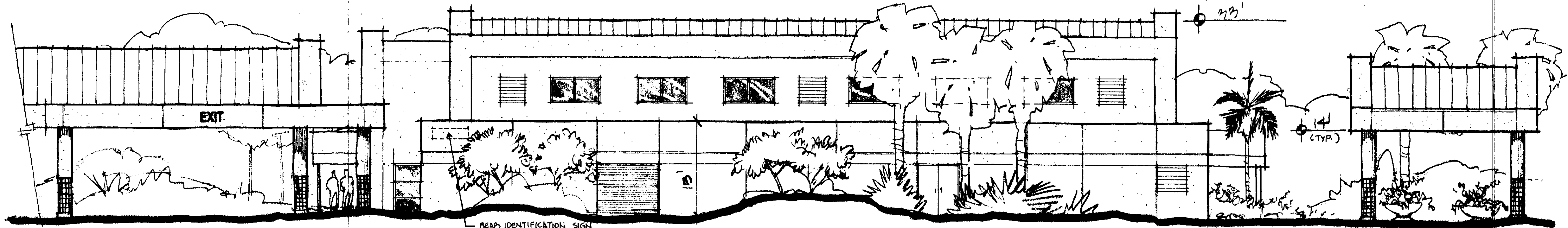


**ROOF PLAN** SCALE: 1" = 20'

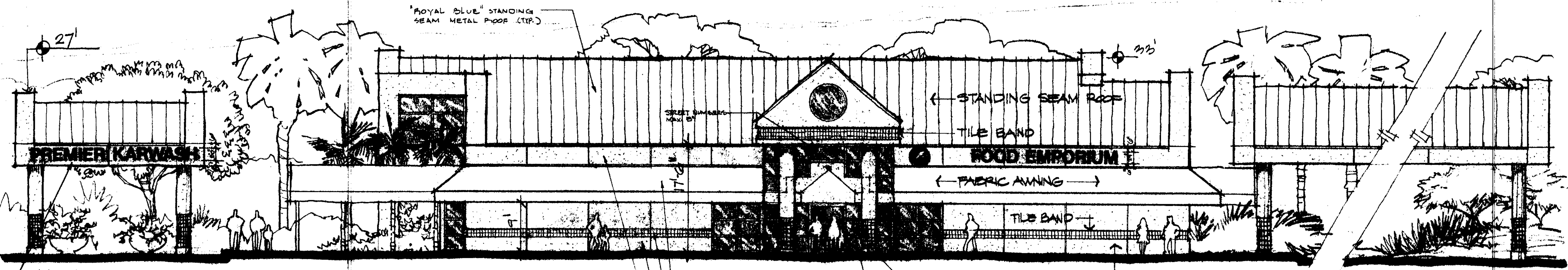
NOTE: 1. SEE SHEET A-3 FOR FREE-STANDING MONUMENT SIGN ELEVATIONS  
 2. ALL SIGNAGE SHALL COMPLY WITH CITY SIGN ORDINANCE SEC. 13-456 THRU SEC. 13-460  
 3. ROOF MATERIAL: STANDING SEAM METAL ROOF SYSTEM; "ROYAL BLUE" (TYPICAL) AS MANUFACTURED BY "ALLIED ROOF SYSTEMS" OR EQUAL

**SIGN LEGEND**

- A. "CHEVRON" (SEE "B" BELOW)
  - B. "PREMIER TOUCHLESS KARWASH"  
 .24" OPEN CHANNEL LETTERS W/WHITE PLEXIGLAS FACE & CONCEALED WHITE NEON INTERIOR; BLUE TRIM ON SIDE OF RAISED LETTERS. IDENTICAL STYLE LETTERS (TYPICAL LETTER STYLE THROUGHOUT)  
 .12" X 12" X 75" = 59 S.F. X 2' HIGH = 118 S.F. ALLOWED > 118 S.F. INSTALLED
  - C. "CHEVRON"  
 .24" OPEN FACE CHANNEL LETTERS; MATCH "A"  
 .12" X 12" X 75" = 41 S.F. X 2' HIGH = 82 S.F. ALLOWED > 82 S.F. INSTALLED
  - D. "FOOD EMPORIUM"; 24" LETTERS (MATCH "A", "B", "C") (SEE "E" BELOW FOR ALLOWED S.F.)
  - E. "LOGO"; 24" DIAM; MAX. 3 COLORS  
 .116 L.F. X 75" = 87 L.F. X 2' HIGH = 174 S.F. ALLOWED > 80 S.F. INSTALLED
  - F. "PREMIER KARWASH"  
 .24" OPEN FACE CHANNEL LETTERS W/WHITE PLEXIGLAS FACE AND CONCEALED WHITE NEON INTERIOR; IDENTICAL STYLE LETTERS  
 .30 L.F. X 75" = 22.5 L.F. X 2' HIGH = 45 S.F. ALLOWED > 45 S.F. INSTALLED
  - G. "EXIT"  
 .12" REVERSE CHANNEL LETTERS; WHITE; BACKLIT NEON; IDENTICAL STYLE  
 .3 S.F. ALLOWED > 3 S.F. INSTALLED
  - H. "ENTER"  
 .12" REVERSE CHANNEL LETTERS; MATCH "G"  
 .3 S.F. ALLOWED > 3 S.F. INSTALLED
  - I. NOT USED.
  - J. REAR IDENTIFICATION SIGN:  
 .6" REVERSE CHANNEL LETTERS; WHITE; MATCHING STYLE  
 .3 S.F. ALLOWED > 3 S.F. INSTALLED
  - K. "ENTER" & "EXIT" SIGNS: SEE ELEVATION SHEET A-3  
 .3 S.F. ALLOWED > 3 S.F. INSTALLED
  - L. MONUMENT SIGN #1: SEE SHEET A-3  
 .12" REVERSE CHANNEL LETTERS; BLUE W/BACKLIT NEON (TYPICAL) .2" DIAM. LOGO; MAX. 3 COLORS  
 .12" X 1/2" = 560 L.F. X 88 S.F. + (56 X 82" = 3 S.F.) = 111 S.F. ALLOWED > 31 S.F. INSTALLED
  - M. MONUMENT SIGN #2: SEE SHEET A-3  
 .12" REVERSE CHANNEL LETTERS; BLUE W/BACKLIT NEON (TYPICAL)  
 .COMPNY NAME & LOGO; WHITE LETTERS; BLUE LOGO; BACKLIT; 3 S.F. ALLOWED > 3 S.F. INSTALLED  
 .PRICE DATA; WHITE BACKLIT PANEL; 12 S.F. ALLOWED; 12 S.F. INSTALLED  
 .32 S.F. OVERALL ALLOWED > 27 S.F. INSTALLED
- NOTE: 1. LANDSCAPE SHADE OF ALL FREE-STANDING SIGNS & CONCEAL ANY SPOTLIGHT ILLUMINATION ("K,L,M")  
 2. MIN. 6" CLEAR @ TOP & BOT. OF ALL SIGN SIGNS & LOGOS



**NORTH ELEVATION** SCALE: 1/8" = 1'-0"



**SOUTH ELEVATION** SCALE: 1/8" = 1'-0"

FABRIC AWNING: "ROYAL BLUE" TO MATCH METAL ROOFING  
 TILE BAND: "COBALT BLUE" AS PER AMERICAN OLEAN OR EQUAL  
 PAINT: #059 (PEACH) AS MFG'D. BY "BENJAMIN MOORE" OR EQUAL (TYPICAL)  
 ROUND COLUMNS STUCCO FINISH  
 BUSINESS HOURS SIGN: MAX. 1/2" NO. FT. TOTAL AREA MAX. 4" LETTERS

**EDLUND & DRITENBAS ARCHITECTS, P.A.**  
 AR - AA 000086  
 140 S.W. 12th AVE., #101-C, DEERFIELD BEACH, FL., 33442  
 PHONE (561) 429-9905 FAX: (561) 421-8289

SEAL: *Edlund* 7-15-91

**GAS FACILITY AND CONVENIENCE MART**  
 MERTO BUILDERS AND KNIGHT ENERGY  
 COCONUT GROVE, FLORIDA

PROJECT: \_\_\_\_\_  
 FOR: \_\_\_\_\_

NO.	DATE	REVISIONS

COMM. NO.: 000001  
 DATE: 4.14.91  
 BY: \_\_\_\_\_  
 CHKD: \_\_\_\_\_

SHEET **A-2**  
 OF THREE

7.15.91  
 9.2.91  
 9.3.91