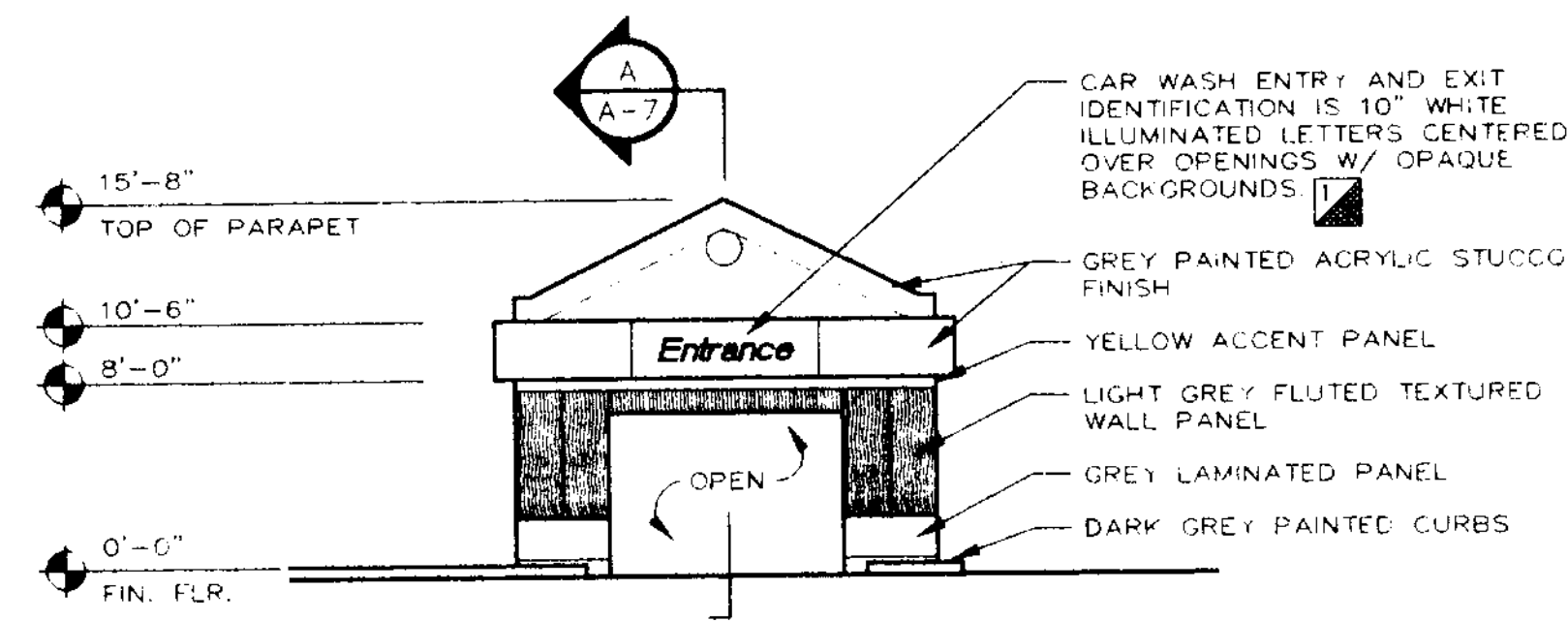


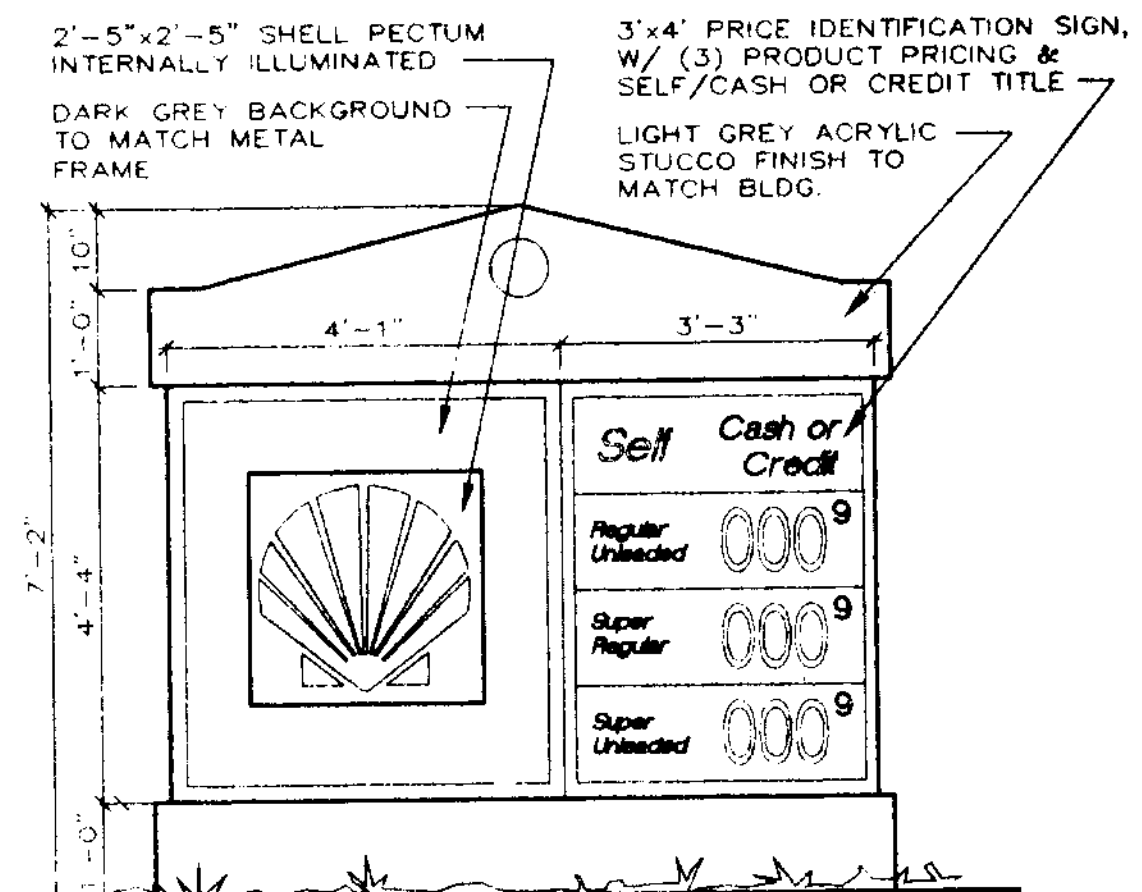
**SOUTH ELEVATION - SAMPLE ROAD**

SCALE: 1/8" = 1'-0"



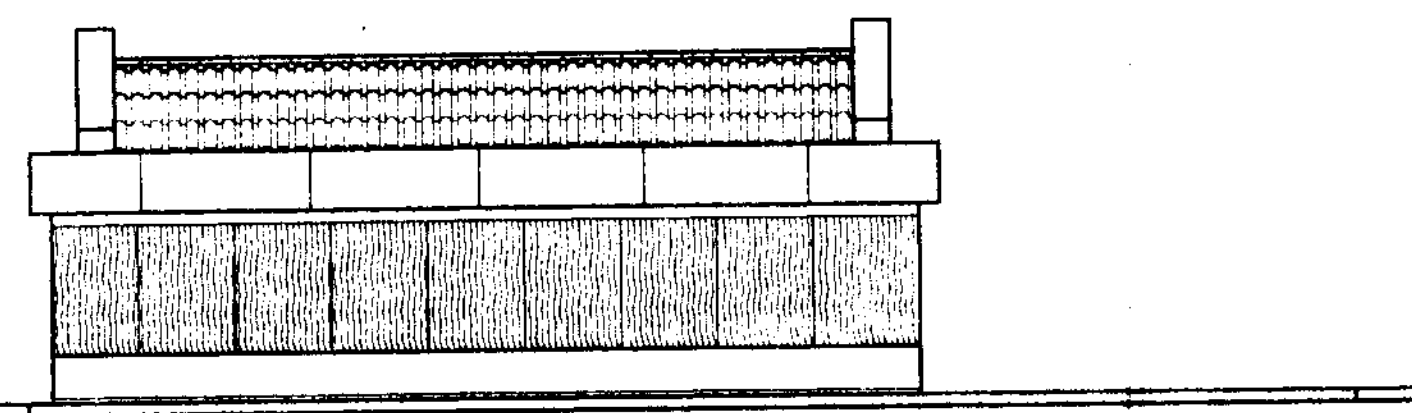
**EAST ELEVATION**

SCALE: 1/8" = 1'-0"



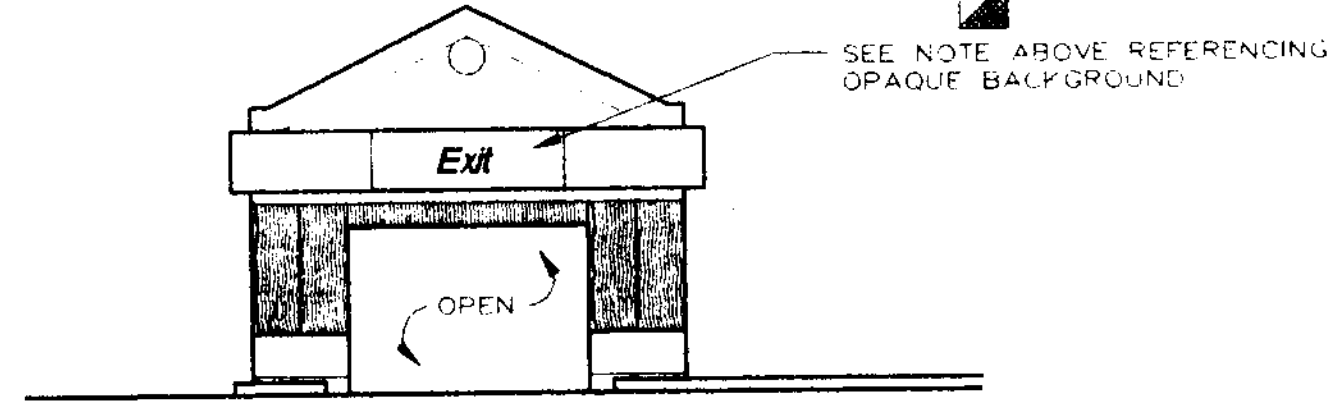
**GROUND SIGN ELEV.**

SCALE: 1/2" = 1'-0"



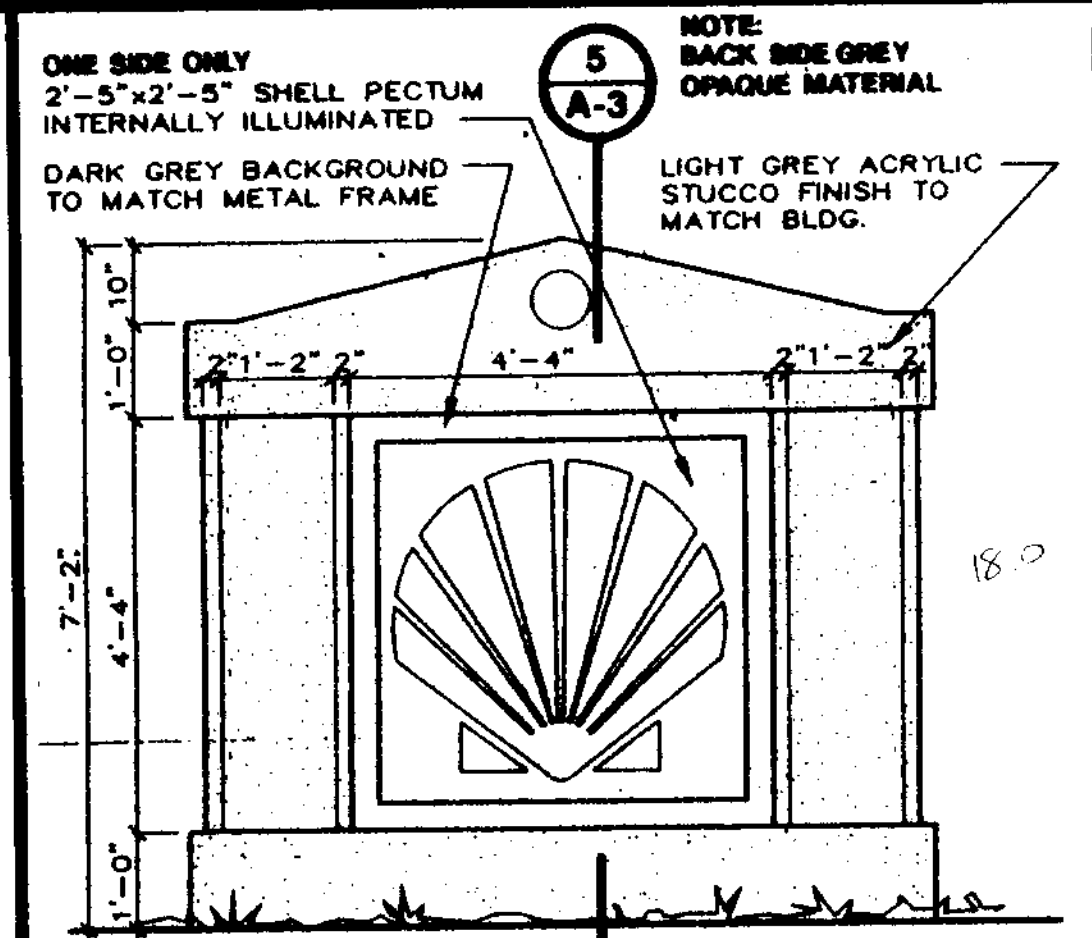
**NORTH ELEVATION**

SCALE: 1/8" = 1'-0"



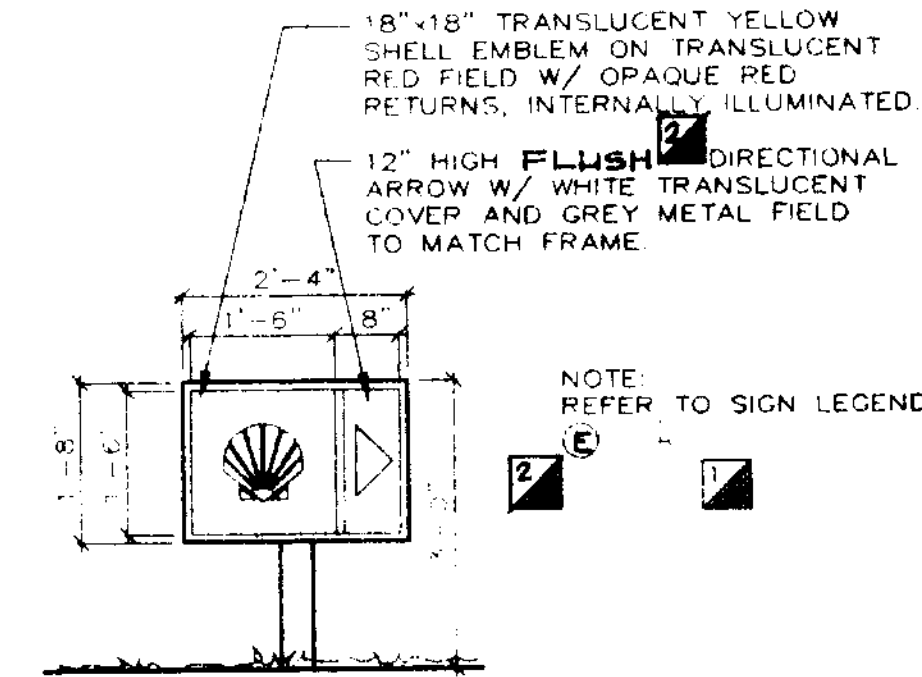
**WEST ELEVATION**

SCALE: 1/8" = 1'-0"



**GROUND SIGN - ELEVATION**

SCALE: 1/2" = 1'-0"



**DIRECTIONAL SIGN ELEV.**

SCALE: 1/2" = 1'-0"

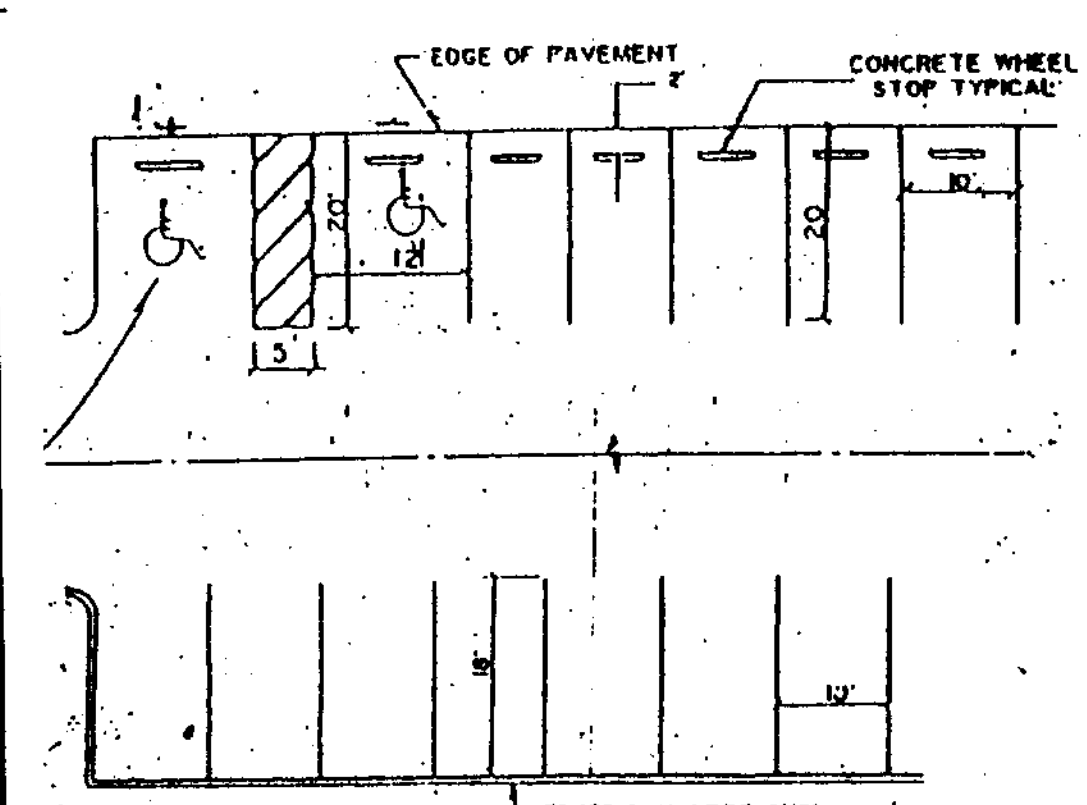
Sign FTO-26 may be fabricated on one panel or two.

**Notes:**

- All letters are 1.5" Series "C".
- Top sign shall have a reflectorized blue background with white, reflectorized legend & border.
- Bottom sign shall have a reflectorized white background with black opaque legend & border.

**HANDICAP SIGN DETAIL**

N.T.S. FLORIDA STATUTES, SECTION 316.1855



**PARKING DETAILS**

1 A-3

**Data Sheet**

**Citation Series**

**Pole and Bracket Specification**

**POLES (Straight 4", 5" and 6" Sq. Poles)**

**Steel Specifications**

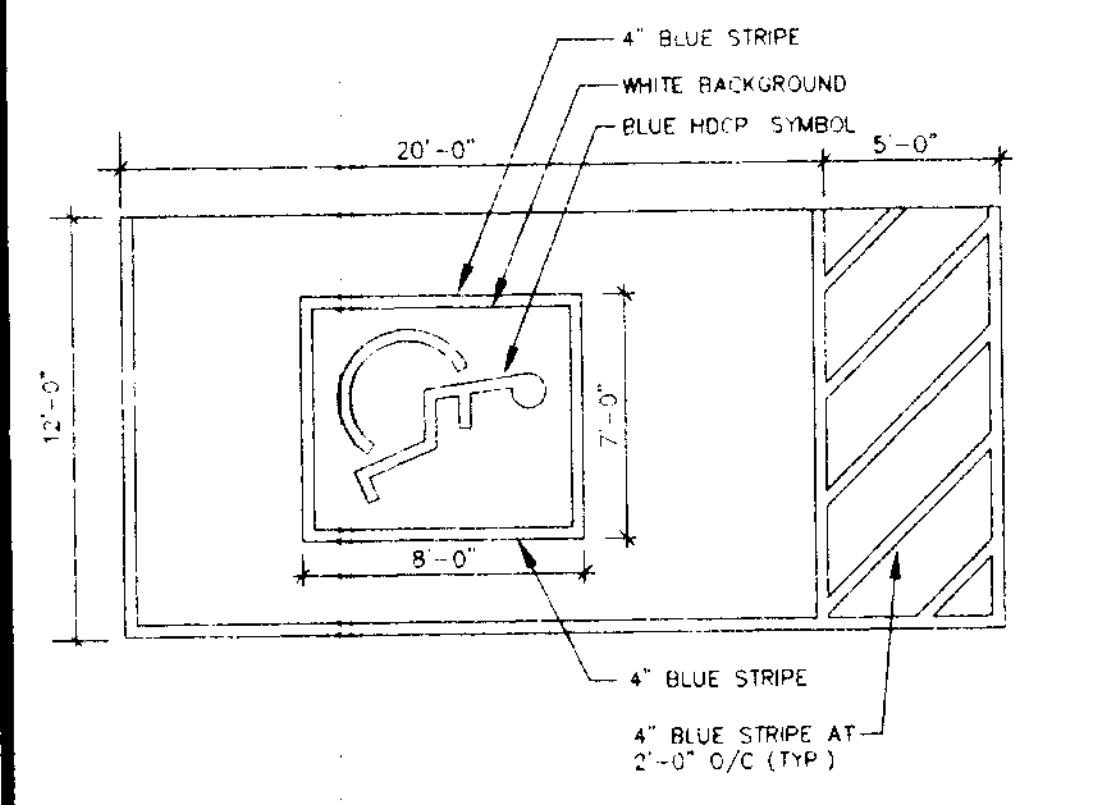
- Poles shall be electro-coated A513-A500 Grade B steel tubing with a minimum yield strength of 48,000 PSI.
- Diagonals shall be galvanized steel plate with a minimum yield strength of 36,000 PSI.
- Standard finish is prime, bronze, black, sandstone or white.

**Aluminum Specifications**

- Poles are finished with anodized aluminum or powder coated finish.
- Diagonals are finished with anodized aluminum or powder coated finish.
- Standard finish is clear, bronze, black, sandstone or white.

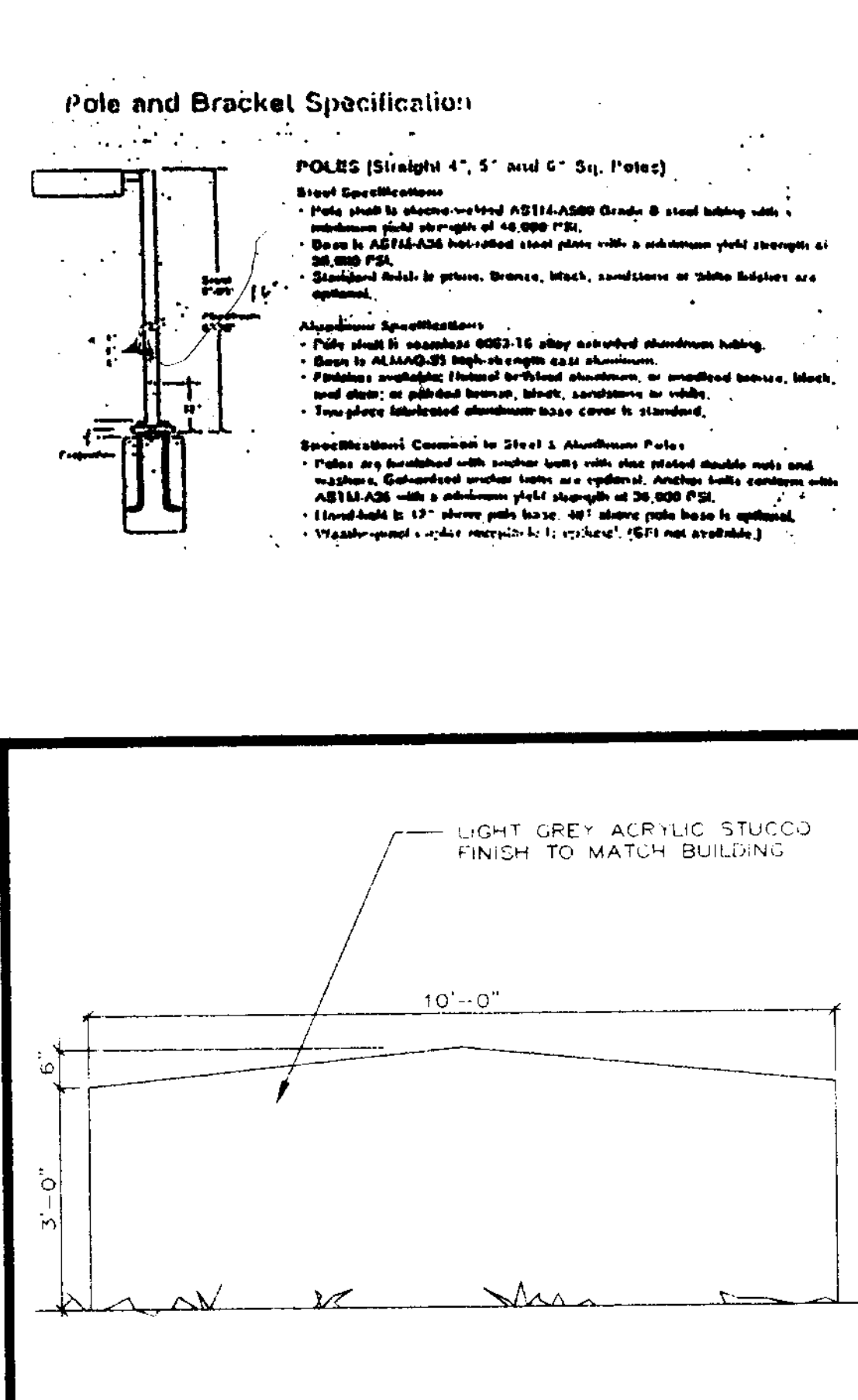
**Structural Connection to Steel & Aluminum Poles**

- Poles are finished with anodized aluminum or powder coated finish and weather-protected under nuts or caps.
- Diagonals are finished with anodized aluminum or powder coated finish.
- Standard finish is clear, bronze, black, sandstone or white.



**HDCP. PARKING**

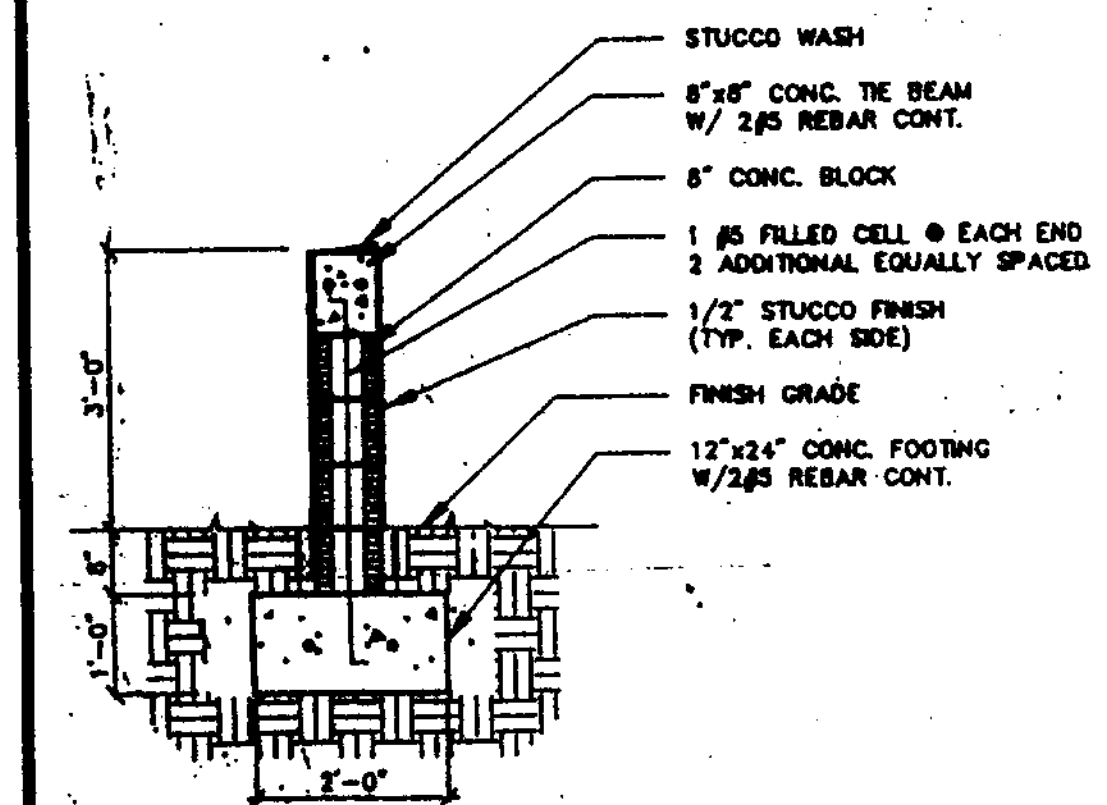
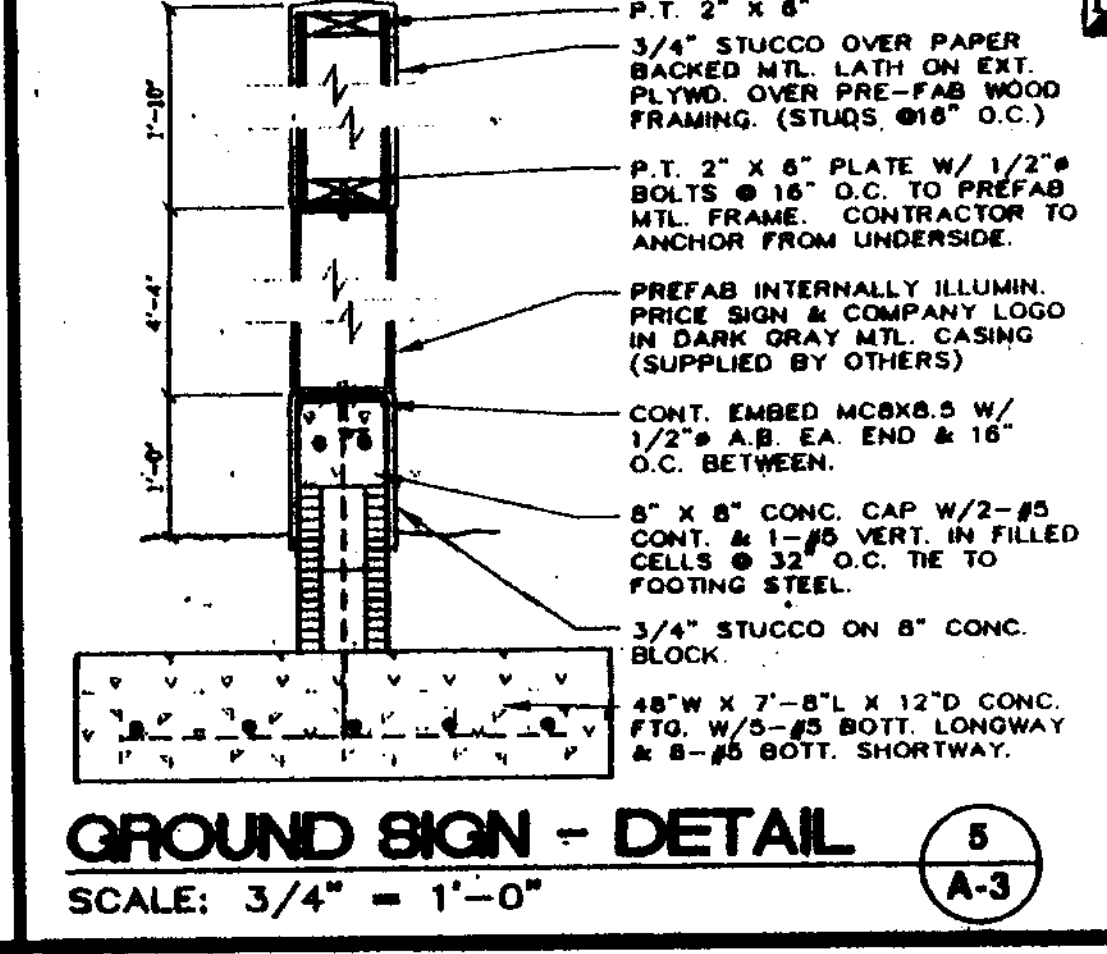
2 A-3



**WALL ELEVATION**

1/2" = 1'-0"

3 A-3



**WALL DETAIL (SECTION)**

1/2" = 1'-0"

4 A-3

**SIGN LEGEND**

(A) "FOOD MART" INTERNALLY ILLUMINATED BUILDING FASCIA PANEL /BACKGROUND, OPAQUE SIGN W/ 18" PUSH-OUT LETTERS. LETTERS ARE WHITE TRANSLUCENT WITH GREY OPAQUE RETURNS.

ALLOWABLE SIGN LENGTH: (36 L.F. x 75%) = 27 L.F.  
 ACTUAL SIGN LENGTH: 10'-2" LENGTH  
 ACTUAL SIGN AREA: 15.25 S.F.  
 PROJECTION FROM PANEL: APPROX. 3"-4"

(B) "CAR WASH" INTERNALLY ILLUMINATED BUILDING FASCIA PANEL /BACKGROUND, OPAQUE SIGN W/ 18" PUSH-OUT LETTERS. LETTERS ARE WHITE TRANSLUCENT WITH GREY OPAQUE RETURNS.

ALLOWABLE SIGN LENGTH: (36 L.F. x 75%) = 27 L.F.  
 ACTUAL SIGN LENGTH: 9'-3" LENGTH  
 ACTUAL SIGN AREA: 13.88 S.F.  
 PROJECTION FROM PANEL: APPROX. 3"-4"

(C) "SELF" 10" HIGH "OUT-OUT" LETTERS WITH WHITE TRANSLUCENT COVER AT ENDS OF SPANREL PANELS. INTERNALLY ILLUMINATED. ALL "OUT-OUT" LETTERS MUST INTRUDE/EXTRUDE A MIN. 1/4" FROM OPAQUE BACKGROUND.

ALLOWABLE SIGN AREA: 50 S.F.  
 ACTUAL SIGN LENGTH: 2'-0"  
 ACTUAL SIGN AREA: 1.67 S.F.

(D) "SHELL" PUMP ISLAND CANOPY FASCIA PANEL/BACKGROUND, OPAQUE W/ 18" PUSH-OUT LETTERS. INTERNALLY ILLUMINATED. LETTERS ARE WHITE TRANSLUCENT WITH GREY OPAQUE RETURNS.

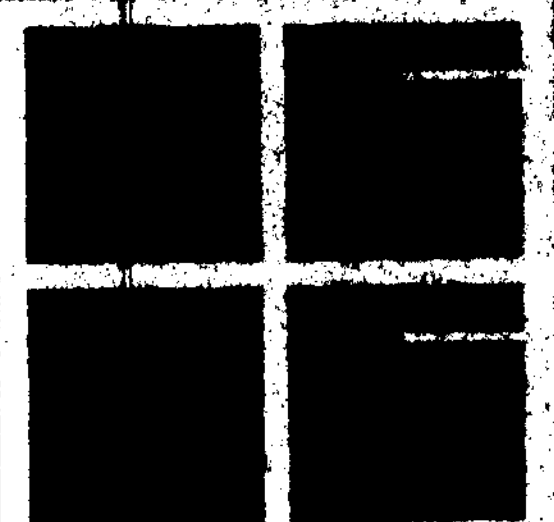
ALLOWABLE SIGN LENGTH: (50 L.F. x 75%) = 37.5 L.F.  
 ACTUAL SIGN LENGTH: 5'-10" LENGTH  
 ACTUAL SIGN AREA: 8.75 S.F.  
 PROJECTION FROM PANEL: APPROX. 3"-4"

(E) DIRECTIONAL SIGNS 18"x18" TRANSLUCENT YELLOW SHELL EMBLEM ON TRANSLUCENT RED FIELD WITH OPAQUE RED RETURNS. INTERNALLY ILLUMINATED. 12" HIGH FLUSH DIRECTIONAL ARROW WITH WHITE TRANSLUCENT COVER & GREY METAL FIELD TO MATCH FRAME (SEE "NOTE" ON SIGN ELEVATION DETAIL).

(F) IDENTIFICATION SIGN 2'-5"x2'-5" TRANSLUCENT YELLOW SHELL EMBLEM ON TRANSLUCENT RED FIELD WITH OPAQUE RED RETURNS. INTERNALLY ILLUMINATED. PRICE SIGNAGE TO BE 3" x 4" BLACK LETTERING ON INTERNALLY ILLUMINATED TRANSLUCENT YELLOW FIELD WITH CHANGEABLE PRICE COPY. FRAMING AND FIELD AROUND SHELL EMBLEM SHALL BE DARK GREY METAL.

(G) "ENTRANCE/EXIT": LOCATED ON ENDS OF CAR WASH. SHALL BE 10" HIGH "OUT-OUT" LETTERS WITH WHITE TRANSLUCENT ON FASCIA PANEL. INTERNALLY ILLUMINATED. ALL "OUT-OUT" LETTERS MUST INTRUDE/EXTRUDE A MIN. 1/4" FROM OPAQUE BACKGROUND.

**NOTE:** ALL ILLUMINATED SIGNS WILL HAVE DISCONNECT SWITCHES.



**ARCHITECT**  
**JEFF FALKANGER & ASSOCIATES INCORPORATED**

614 SOUTH FEDERAL HWY.  
 FT. LAUDERDALE, FL 33301  
 (305) 764-6575

2830 WINKLER AVENUE  
 SUITE #108-A  
 FT. MYERS, FL 33916  
 (813) 277-9333

COPYRIGHT © 1994 ARCHITECT JEFF FALKANGER AND ASSOCIATES INC. ALL RIGHTS RESERVED. THIS DOCUMENT OR PARTS THEREOF, MAY NOT BE REPRODUCED IN ANY FORM WITHOUT PERMISSION.

DESIGNED  
 DRAWN  
 CHECKED

MAY 10 1994

25 MAR 1994 SIGN PERMIT REVISIONS  
 29 APRIL 1994 SIGN PERMIT REV.

| NO. | DATE          | DESCRIPTION           |
|-----|---------------|-----------------------|
| 1   | 25 MAR 1994   | SIGN PERMIT REVISIONS |
| 2   | 29 APRIL 1994 | SIGN PERMIT REV.      |

**SHELL OIL CO.**  
**AMERICAN EQUITY SITE DEVELOPERS**

LYONS & SAMPLE RD.  
 COCONUT CREEK, FL.

**EXTERIOR CAR WASH ELEVATIONS**

**SIGN ELEVATIONS SITE DETAILS**

A-3 OF 7

LAST DATE PRINTED 4.4.94/5.10.94