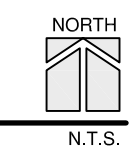


**LANDSCAPE SHEET KEY**



- SHEET LP-6 BUILDINGS 1, 2, 3, 4, 5, & 16
- SHEET LP-7 BUILDINGS 6, 7, 8, 9, 10, 11, 12, 13, 14, 15, 17, 18, 19, & 20
- SHEET LP-8 NOTES AND DETAILS

**Landscape Requirements**

CODE SECTION	REQUIREMENT
13-443.2	MINIMUM LANDSCAPE REQMT. / PUD 1 tree and 6 shrubs per 2000 s.f. of open space 162,478 s.f./2000 = 81 trees req. 486 shrubs req.
13-443.7(a)	CORNER LOT 1 tree and 4 shrubs per corner lot 10 lots = 10 trees and 40 shrubs
13-443.7(d)	FRONT AND SIDE BLDG. LANDSCAPE 1 tree and 10 shrubs (or 30 g'cover) per 40 l.f. 4915 l.f./40 = 122 trees req. 1220 shrubs (or 3660 g'cover) req.
13-443.8	PERIMETER LANDSCAPE 1 tree per 40 l.f., continuous hedge 2222 l.f. / 40 = 55 trees and 1111 shrubs
13-443.12(a)	INTERIOR LANDSCAPE/VEHICULAR USE AREA 1 tree per 10 spaces 43 spaces/10 = 4 trees req.
13-443.13	STREET TREES 1 tree per 40 l.f. 5924 l.f. / 40 = 148 trees
ROADWAY LANDSCAPE BUFFER STANDARDS	
13-443.15(c)2	OPEN SPACE TREES 1 tree / 2000 s.f. buffer 23,087 s.f. / 2000 = 12 trees required
13-443.15(c)4	HEDGE 1 / 2 l.f. buffer 932 l.f. / 2 = 466 shrubs required
13-443.15(c)2	OPEN SPACE SHRUBS 40 shrubs / 2000 s.f. buffer 23,087 s.f. / 2000 (40) = 461 shrubs required

**Landscape Totals**

	required	provided
Trees (does not include palms)	432	458
Shade/Canopy trees (40% min.)	173	229
Intermediate trees (30% min.)	130	186
Small trees (10% max.)	43	43 (counted out of total 253 provided)
Palms (50% max.)*	216	156
Native Trees & Palms (40% min.)	179	500 (81% of provided trees & palms)
* Cabbage & Alexander counted 3:1		
Shrubs	3744	7003
Native Shrubs (40% min.)	1498	4934 (70% of provided shrubs)

**Screening Above Ground Equipment**

ALL ABOVE GROUND EQUIPMENT SHALL BE SCREENED ON 3 SIDES WITH 24" HT. COCOPLUM HEDGE MATERIAL PLANTED AS PER SPECIFICATION IN PLANT KEY. HEDGE MATERIAL QUANTITIES WILL VARY DEPENDING ON LOCATION AND SIZE OF EQUIPMENT AND MAY NOT BE SHOWN ON PLAN IF EQUIP. IS ADDED AT A LATER DATE. PROVIDE A 3' CLEAR ZONE BETWEEN EQUIPMENT AND HEDGE OR AS MAY BE REQUIRED BY UTILITY. EQUIPMENT INCLUDES, BUT IS NOT LIMITED TO, A/C CONDENSERS, UTILITY EQUIPMENT, MECHANICAL EQUIPMENT, TRANSFORMER BOX, VALVES, EXHAUST VENTS, ETC.

**Landscape Placement**

- TREES SHALL BE MIN. 10' FROM WATER MAINS AND SHALL HAVE A 36" DEPTH ROOTBARRIER. SEE DETAIL SHEET LP-8.
- TREES SHALL BE A MIN. 15' FROM LIGHT POLES, SMALL TREES AND PALMS SHALL BE 10' FROM LIGHT POLES. SEE DETAIL LP-8.
- SEE FIRE HYDRANT CLEAR ZONE DETAIL ON LP-8.

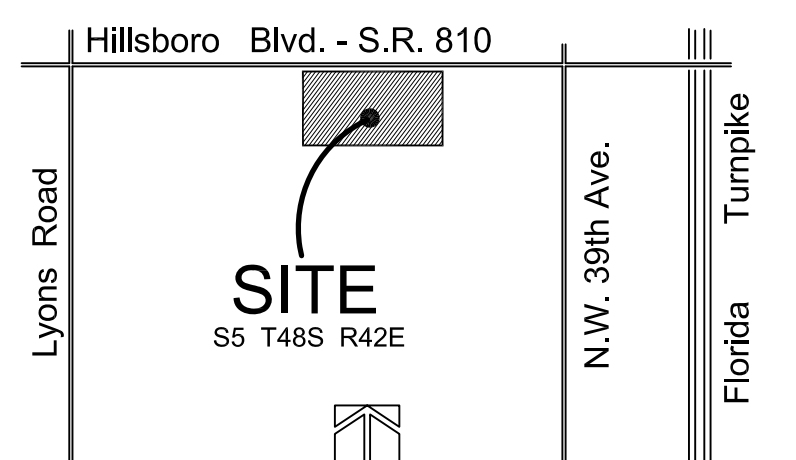
**Cabbage Palm Relocation Notes**

AS OF 2006 THERE WERE APPROXIMATELY 156 EXISTING CABBAGE PALMS FROM THE SITE THAT WERE LOCATED IN A TEMPORARY HOLDING AREA.

An inventory of the relocated palms shall be conducted by the contractor and landscape architect prior to final planting to determine which palms are currently of health and quality to use on site.

Utilize these selected existing palms to create a staggered, natural appearance in each grouping.

SEE SHEET LP-8 FOR ADDITIONAL NOTES AND DETAILS CONCERNING CABBAGE PALM RELOCATION.



**Site Location Map**

Cabana/Pool Building address- 4014 Allerdale Place  
Coconut Creek, FL 33073

**Plant Key** COMMON AREA IS LP-2, LP-3, LP-4, & LP-5  
TYPICAL LOT LANDSCAPE IS LP-6 & LP-7

Common Area Quan.	Typical Lot Landscape Quan.	Site Total	Symbol	Botanic Name / Common Name Specification	Degree of Drought Tolerance
	455	455	AD	Asparagus densiflorus 'Myersii' / Foxtail Asparagus 12" o.a., full, 15' o.c.	VERY
200	200	AN	Annuals	Quan, noted is s.f. of planting bed. By owner/seasonal selection	VERY
280	280	BH	BUTTERFLY HABITAT (see also VE) The butterfly habitat shown on sht. LP-5 shall be planted with an equal mix of the following plants in a random, 'naturalistic' manner: 70-Pentas Lacerata - Red 70-Asclepias Tuberosa - Orange Milkweed 70-Stachytarpheta Jamaicensis - Porterweed 70-Asclepias Curassavica - Bloodflower Milkweed Ea. plant shall be 6-12" ht., full, 24" o.c., max.	N.A.	
10	10	CB	Cordia Boissieri / White Geiger 10' ht. x 4.5' spr., 2.5' cal., 5' c.t. standard	VERY	
58	58	CC*	Capparis cynophallophora / Jamaican Caper 36" ht. x 18-24" spr., FULL	VERY	
6	6	CD*	Coccoloba diversifolia / Pigeon Plum 12' ht. x 5.5' spr., 2.5' d.b.h., 5' c.t.	VERY	
44	44	CE*	Cococarpus Erectus / Green Buttonwood 12-14' ht. x 5' spr., 3" d.b.h., balanced branching, 5' c.t.	VERY	
35	35	CH	Chamaedorea cataractarum / Cat Palm 36-42" ht. x 3/8" spr., FULL	-	
936	2470	CI*	Chrysobalanus Icaco 'Red Tip' / Red Tip Coccoloba 24' ht. x 15' spr., 24" o.c., Adjust quantity to plant with branches touching.	VERY	
17	17	CM	Chamaedorea seifrizii / Reed Palm 36-42" ht. x 24-30" spr., min. 8 stems, FULL	-	
17	17	CN	Cocos Nucifera 'Maypan' / Maypan Coconut Palm 4-8' c.w., stagger heights in each grouping	VERY	
55	55	CR*	Cusida Rosea / Pitch Apple 10' ht. x 4.5' spr., 3" cal., 5' c.t.	VERY	
42	42	CT	Cordyline fruticosa 'Kiwi' / Kiwi TI Plant 36-42" ht. x 24-30" spr., min. 3 main stems, FULL	-	
308	308	CU*	Coccoloba Uvifera / Seagrape 30" ht. x 18-24" spr., 24" o.c., adjust quantity to plant with branches touching.	VERY	
6	6	CUJ-1*	Coccoloba Uvifera / Seagrape 10' ht. x 6' spr., 5' c.t., standard	VERY	

**Plant Key** COMMON AREA IS LP-2, LP-3, LP-4, & LP-5  
TYPICAL LOT LANDSCAPE IS LP-6 & LP-7

Common Area Quan.	Typical Lot Landscape Quan.	Site Total	Symbol	Botanic Name / Common Name Specification	Degree of Drought Tolerance
260	260	CVG	Codiaeum variegatum 'Gold Dust' / Gold Dust Croton 24" ht. x 15-18" spr., 24" o.c.	VERY	
132	132	CVM	Codiaeum variegatum 'Mamey' / Mamey Croton 24" ht. x 15-18" spr., 24" o.c.	VERY	
17	17	DR	Delonix Regia / Royal Poinciana 12' ht. x 7' spr., 3-12" d.b.h.	VERY	
1014	1014	DT	Dianella isamanica variegata / Variegated Flax Lily 12" o.a., full, 15' o.c.	VERY	
60	60	ES	Euphorbia Milli 'Short & Sweet' / Pink Dwarf Crown of Thorns 12" ht., full, 15' o.c.	VERY	
963	600	FM	Ficus microcarpa 'Green Island' / Green Island Ficus 12" ht. x 12-15" spr., 24" o.c.	VERY	
383	383	HA	Hamelia Patens 'Compacta' / Dwarf Firebush 24" ht. x 15" spr., 24" o.c.	VERY	
162	162	HC*	Hymenocallis Latifolia / Spider Lily 18" ht., full, 24" o.c.	VERY	
81	81	HP*	Hamelia Patens / Firebush 30" ht. x 15" spr.	VERY	
102	102	HR	Hibiscus Rosa-sinensis / Pink Hibiscus 24" ht. x 18" spr., 24" o.c.	MOD.	
16	16	HS	Hibiscus Rosa-sinensis / Pink Hibiscus 'Standard' 5' ht. x 3' spr., standard	MOD.	
17	17	IC*	Ilex cassine / Dahoon Holly 12' ht. x 5' spr., 3" d.b.h., balanced branching, 5' c.t.	VERY	
400	432	IV*	Ilex vomitoria 'Shellings Dwarf' / Dwarf Yaupon Holly 10-12" ht. x 18" spr., 15" o.c.	VERY	
10	10	JH	Jatropha Hastata / Jatropha 5' ht. x 4' spr., full	VERY	
582	582	JV	Jasminum volubile / Wax Jasmine 18" ht. x 18 spr., 18" o.c.	MOD.	
76	76	LJ	Ligustrum Japonicum / Japanese Privet 10' ht. x 6' spr., 5' c.t., multi-stem tree form	VERY	
27	27	LL*	Lysiloma Latifolia / Lysiloma 12' ht. x 6.5' spr., 4" d.b.h., 5' c.t.	-	
569	569	MC*	Muhlenbergia Capillaris / Muhly Grass 12-18" o.a., full, 24" o.c.	VERY	

**Plant Key** COMMON AREA IS LP-2, LP-3, LP-4, & LP-5  
TYPICAL LOT LANDSCAPE IS LP-6 & LP-7

Common Area Quan.	Typical Lot Landscape Quan.	Site Total	Symbol	Botanic Name / Common Name Specification	Degree of Drought Tolerance
31	31	MF*	Myrcianthes Fragrans / Simpson Stopper 5' ht. x 3' spr., full	VERY	
660	660	MF-1*	Myrcianthes Fragrans / Simpson Stopper 20" ht. x 12" spr., 24" o.c., Adjust quantity to plant with branches touching.	VERY	
418	418	NM*	Naprolepis Cordata / Sword Fern 12" ht. x 12" spr., 24" o.c.	-	
4	4	PA*	Passiflora Incarnata / Passionflower, Maypop 36" ht., train on trellis	MOD	
100	100	PE-1	Pychosperma elegans / Alexander Palm c.w.(bottom of crownshaft) as noted on plan, single heavy trunk	VERY	
8	8	PE-1*	Pychosperma Elegans / Alexander Palm 14-16' ht., double trunk, Palm shall be sized to clear cabana bldg.	VERY	
136	136	PN	Psychotria ligustrifolia / Dwarf Wild Coffee 16" ht. x 12" spr., 24" o.c.	-	
520	520	PP	Podocarpus 'Pringles' / Pringles Podocarpus 10-12" ht. x 12" spr., 15" o.c.	-	
39	39	PV	Petrea volubilis / Queen's Wreath 36" ht., min. 3 runners, train on trellis	VERY	
14	14	PU	Plumeria Obtusa / Plumeria 'Singapore Pink' 8-10' ht., x 4-6' spr.	VERY	
25	25	QV*	Quercus Virginiana / Live Oak 12' ht. x 6.5' spr., 4" d.b.h., 5' c.t.	VERY	
66	66	QV-1*	Quercus Virginiana 'Highrise' / 'Highrise' Live Oak 14' ht. x 6.5' spr., 4" d.b.h., 5' c.t.	VERY	
21	21	RE*	Roystonia Elata / Royal Palm g.w. ht. as noted on plan	VERY	
255	255	RT	Coccoloba diversifolia / Pigeon Plum 10' ht. x 4-6' spr., 5' c.t. Conocarpus erectus sericeus / Silver Buttonwood 10' ht. x 4-6' spr., 5' c.t. Ilex cassine / Dahoon Holly 10' ht. x 4-6' spr., 5' c.t. Lagerstemia Indica / Crape Myrtle 10' ht. x 4-6' spr., 5' c.t., 3 trunks varieties / color selection Muskogee - pink Natchez - white Tuscadora - dark pink Magnolia 'Little Gem' / Little Gem Magnolia 10' ht. x 4-6' spr., 5' c.t.	VERY	

**Plant Key** COMMON AREA IS LP-2, LP-3, LP-4, & LP-5  
TYPICAL LOT LANDSCAPE IS LP-6 & LP-7

Common Area Quan.	Typical Lot Landscape Quan.	Site Total	Symbol	Botanic Name / Common Name Specification	Degree of Drought Tolerance
835	835	SA	Schefflera Arboricola 'Trinette' / Dwarf Schefflera 18" ht. x 12" spr., 24" o.c.	-	
50	50	SM*	Sweetenia Mahagoni / West Indies Mahogany 12' ht. x 6.5' spr., 4" d.b.h., 5' c.t.	VERY	
144	144	SP*	Sabal Palmetto / Cabbage Palm stagger hts. in group 10-18' c.t., new palms with boots Quan. includes any relocated palms from site. Match palms within each grouping.	VERY	
	88	SP-1*	Sabal palmetto / Cabbage Palm c.t. ht. as noted on plan, WITH BOOTS	VERY	
15	15	SP-2*	Sabal Palmetto / Cabbage Palm 20" c.t., matched in character, ht., trunk size.	VERY	
7	7	TR*	Thrinax Radiata / Florida Thatch Palm 4-5' ht., doubles	VERY	
15	15	VE	BUTTERFLY HABITAT (VINES) The butterfly habitat shown on sht. LP-5 notes 15 vines each trained to a post as detailed on sht. LP-8. The species and quantities shall be as follows: 8-Aristolochia Spp. - Dutchman's Pipe 7-Passiflora Incarnata - May Pop 36" ht., min. 3 runners ea., train to post	N.A.	
835	662	1497	VS	Viburnum Suspensum / Sandankwa Viburnum 24" ht. x 15" spr., 24" o.c., Adjust quantity to plant with branches touching.	MOD.
77	39	116	ZF*	Zamia Floridana / Coonite 12" o.a., full	VERY
			SOD	St. Augustine 'Floritam' solid sodded areas, see also notes & detail LP-8	

Drought tolerance is per 'SFWMD Xeriscap Plant Guide'  
PLAN QUANTITIES TAKE PRECEDENCE OVER THOSE NOTED ABOVE  
\* = Native to Florida  
Abbreviations:  
c.t. - clear trunk  
d.b.h. - diameter at breast height  
g.w. - greywood  
ht. - height  
o.a. - overall  
o.c. - on-center spacing  
spr. - spread

NO.	DATE	BY	REVISIONS
1	12/15/14 <td>SET</td> <td></td>	SET	

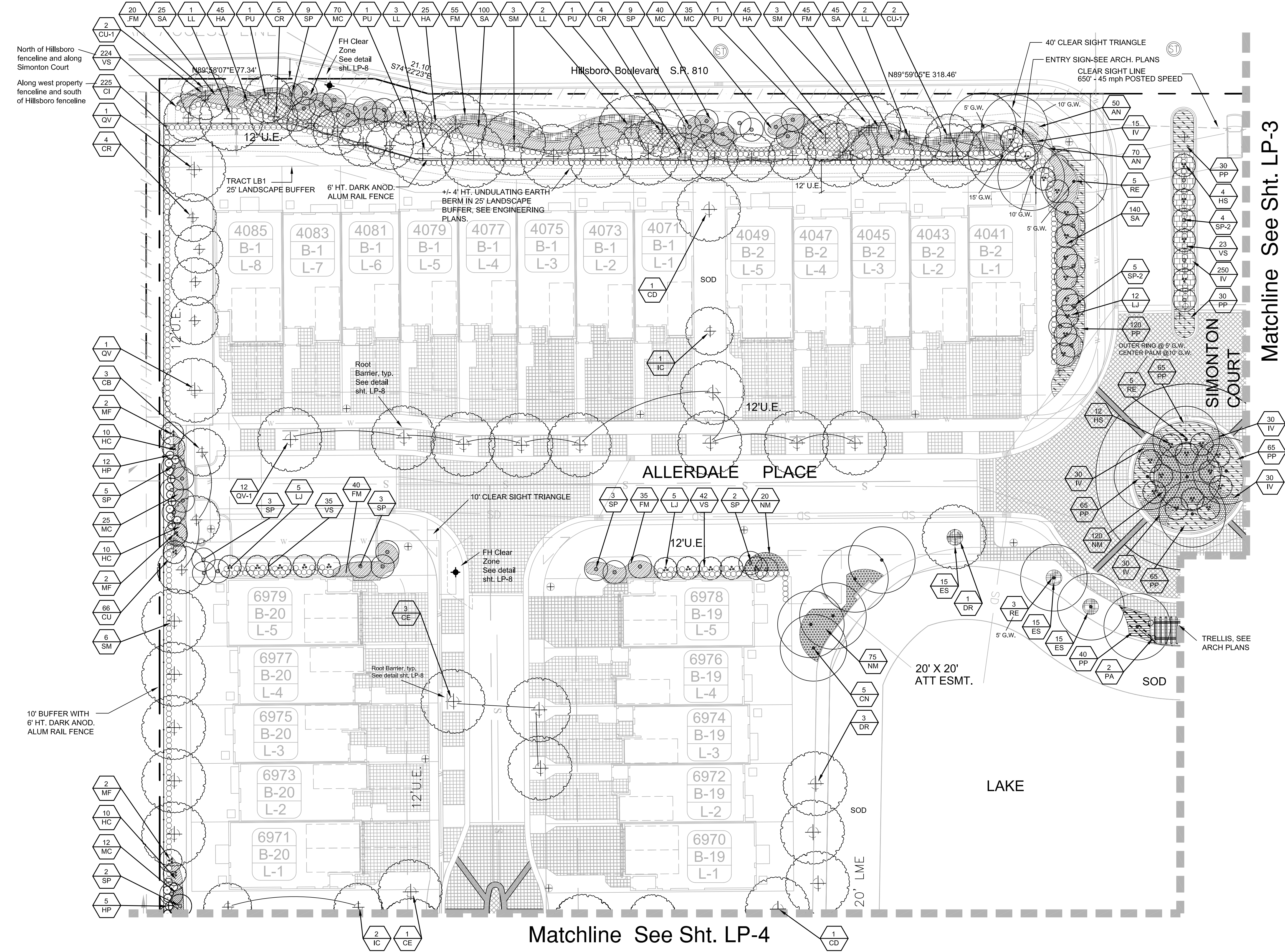
**Covelli Design Associates Inc.**  
2395 N.W. Corporate Blvd., Suite 213  
Coconut Creek, Florida 33451  
561-910-0330  
LC 26000287  
covellidesign.com  
Urban Planning • Landscape Architecture

**Landscape Plan**  
Simonton Court  
Coconut Creek Florida

Date Scale: 09-29-2014 As Noted  
PN# 1176

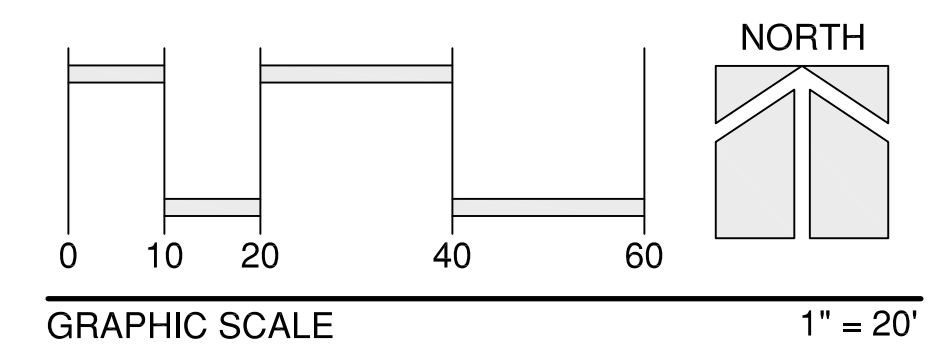
SUBMITTED BY:  
STEVEN E. TATE  
LANDSCAPE ARCHITECT  
No. 967  
STATE OF FLORIDA  
-FOR THE FIRM-  
DATE: 12-22-14

Drawing No.  
**LP-1**  
OF 8



Matchline See Sht. LP-3

Matchline See Sht. LP-4



12/15/14	SET
Revisions pursuant to staff review dated 10/20/14	
Revisions	

**Covelli Design Associates Inc.**  
 Urban Planning • Landscape Architecture

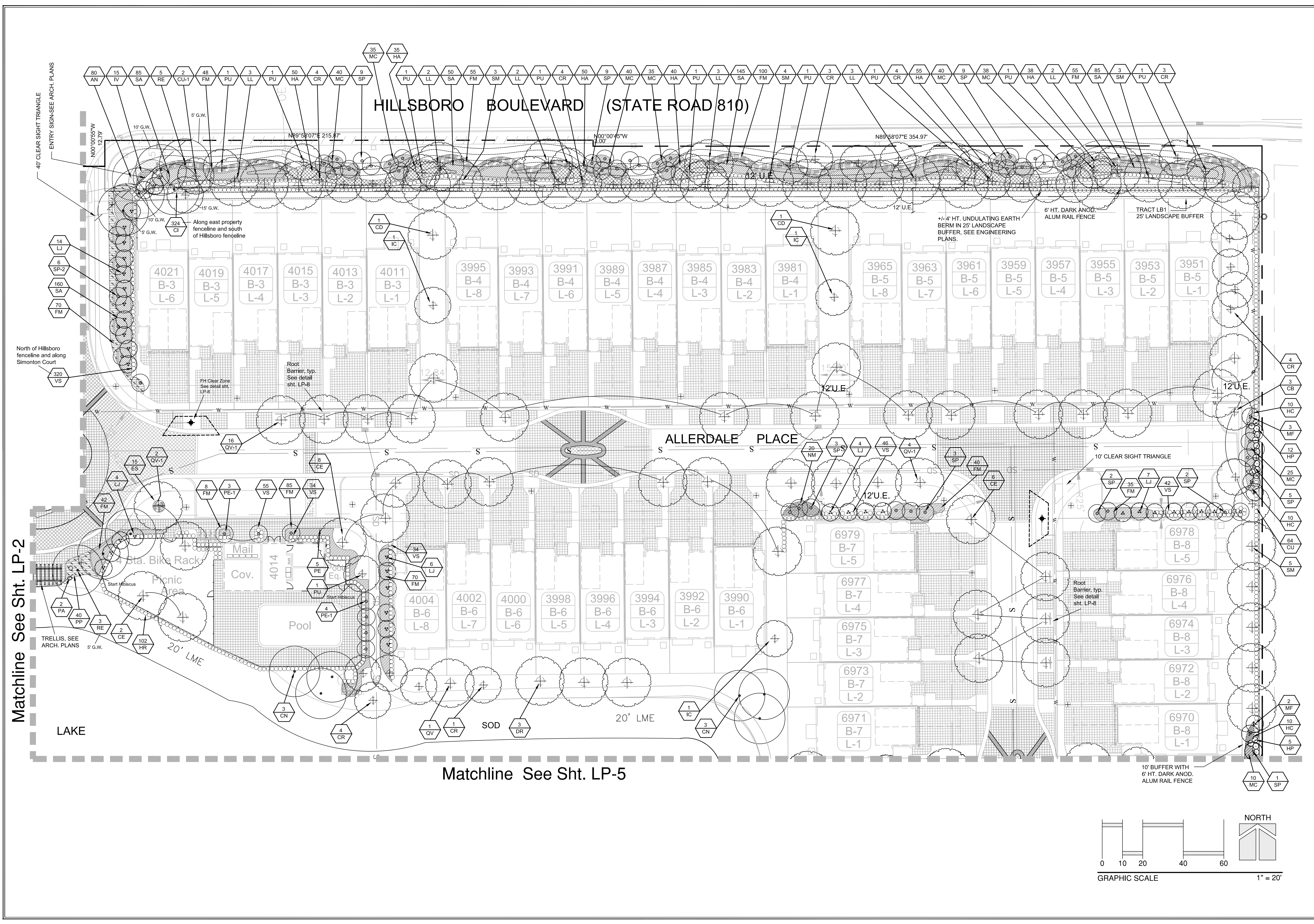
2295 N.W. Corporate Blvd., Suite 213  
 Fort Lauderdale, Florida 33451  
 561-910-0330  
 LC 26000287  
 covellidesign.com

**Landscape Plan**  
**Simonton Court**  
 Coconut Creek Florida

Date 09-29-2014  
 Scale As Noted  
 PN# 1176

SUBMITTED BY—  
 STEVEN E. TATE  
 LANDSCAPE ARCHITECT  
 No. 967  
 STATE OF FLORIDA  
 —FOR THE FIRM—  
 DATE 12-22-14

Drawing No.  
**LP-2**  
 OF 8



Matchline See Sht. LP-2

Matchline See Sht. LP-5

12/15/14	SET
Revisions pursuant to staff review dated 10/20/14	
Revisions	

**Covelli Design Associates Inc.**  
 Urban Planning • Landscape Architecture  
 2295 N.W. Corporate Blvd., Suite 213  
 Fort Lauderdale, Florida 33451  
 561-910-0330  
 LC 26000287  
 covellidesign.com

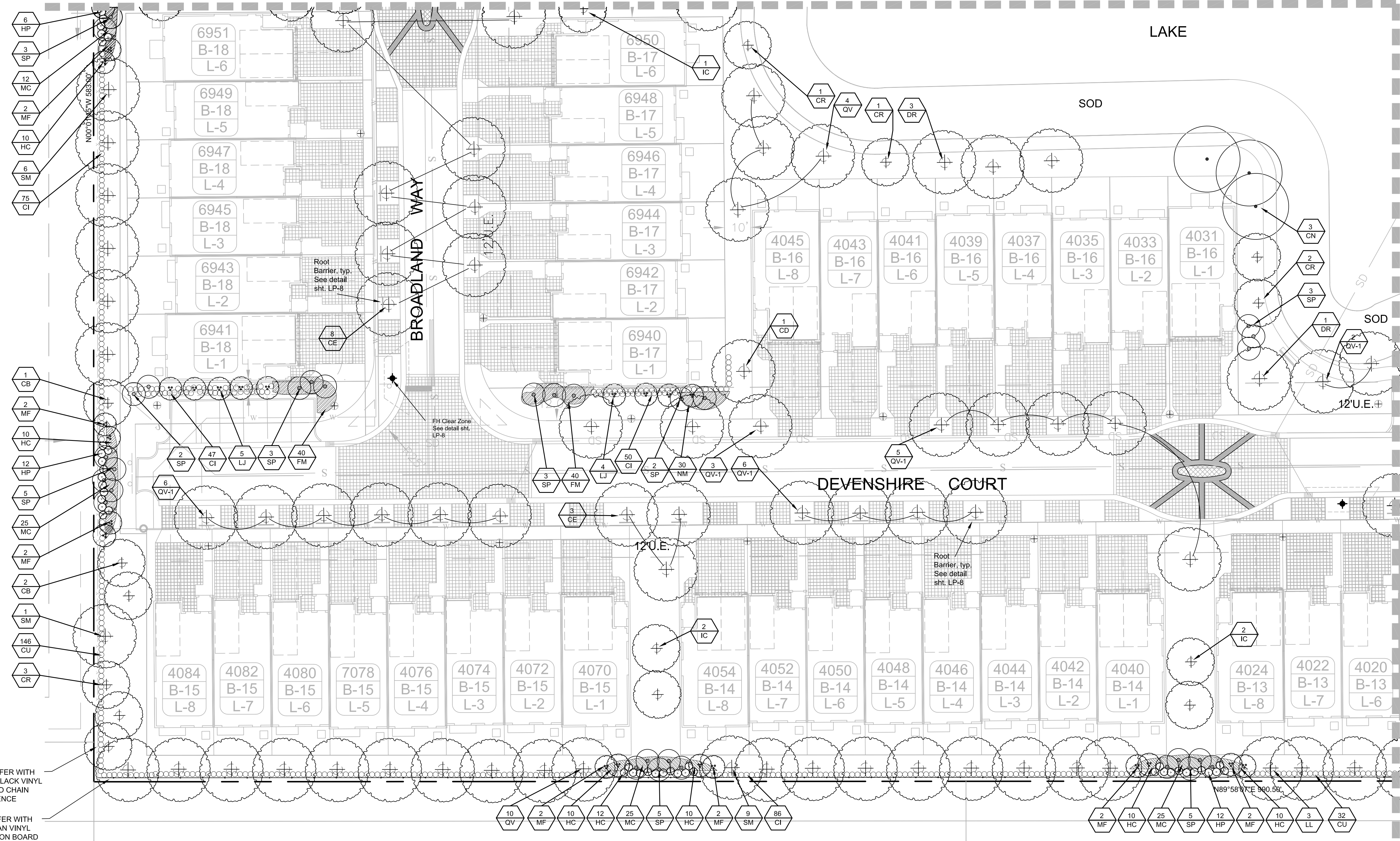
**Landscape Plan**  
**Simonton Court**  
 Coconut Creek Florida

Date 09-29-2014  
 Scale As Noted  
 PN# 1176

SUBMITTED BY—  
 STEVEN E. TATE  
 LANDSCAPE ARCHITECT  
 No. 967  
 STATE OF FLORIDA  
 FOR THE FIRM—  
 DATE 12-22-14

Drawing No.  
**LP-3**  
 OF 8

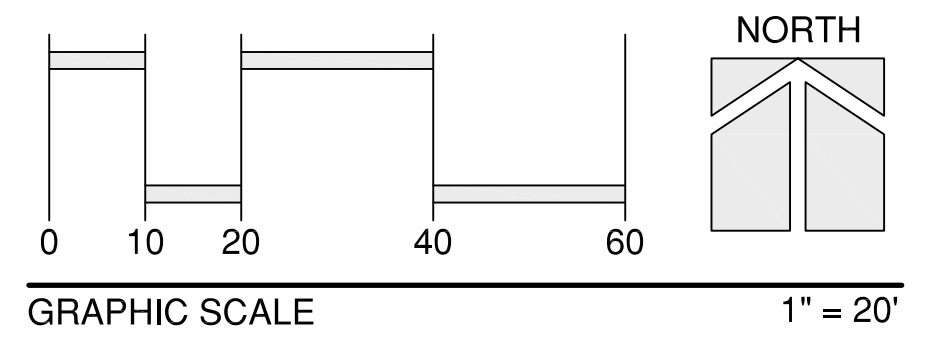
Matchline See Sht. LP-2



Matchline See Sht. LP-5

10' BUFFER WITH 6' HT. BLACK VINYL COATED CHAIN LINK FENCE

10' BUFFER WITH 6' HT. TAN VINYL BOARD ON BOARD FENCE



Revisions	
12/15/14	SET
Revisions pursuant to staff review dated 10/20/14	

**Covelli Design Associates Inc.**  
 Urban Planning • Landscape Architecture

2295 N.W. Corporate Blvd., Suite 213  
 Fort Lauderdale, Florida 33451  
 561-910-0330

LC 26000287  
 covellidesign.com

**Landscape Plan**  
**Simonton Court**  
 Coconut Creek, Florida

Date 09-29-2014  
 Scale As Noted  
 PN# 1176

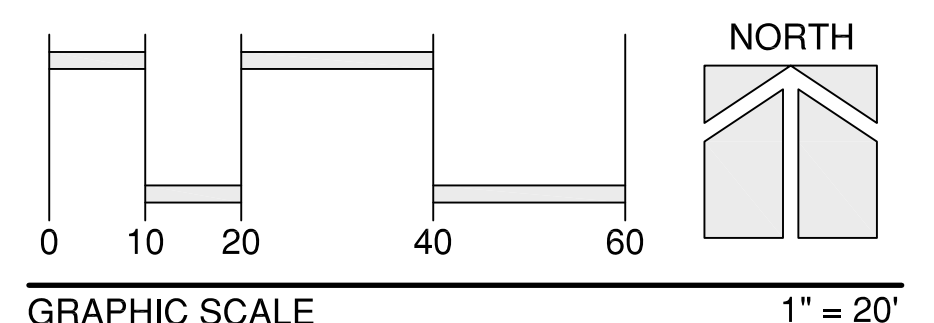
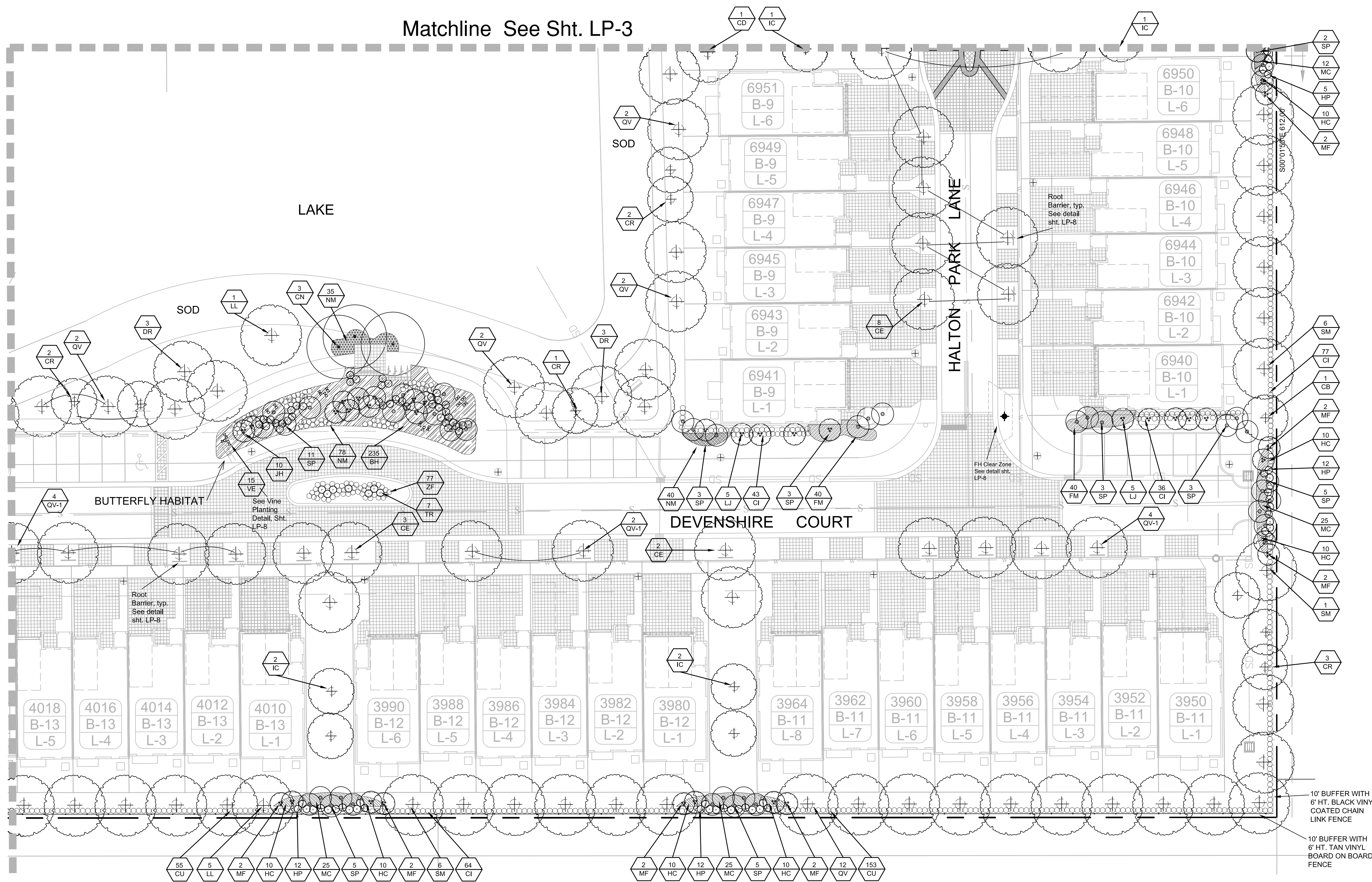
SUBMITTED BY—

STEVEN E. TATE  
 LANDSCAPE ARCHITECT  
 No. 967  
 STATE OF FLORIDA  
 —FOR THE FIRM—  
 DATE 12-22-14

Drawing No.  
**LP-4**  
 OF 8

Matchline See Sht. LP-3

Matchline See Sht. LP-4



Revisions	DATE	BY
	12/15/14	SET

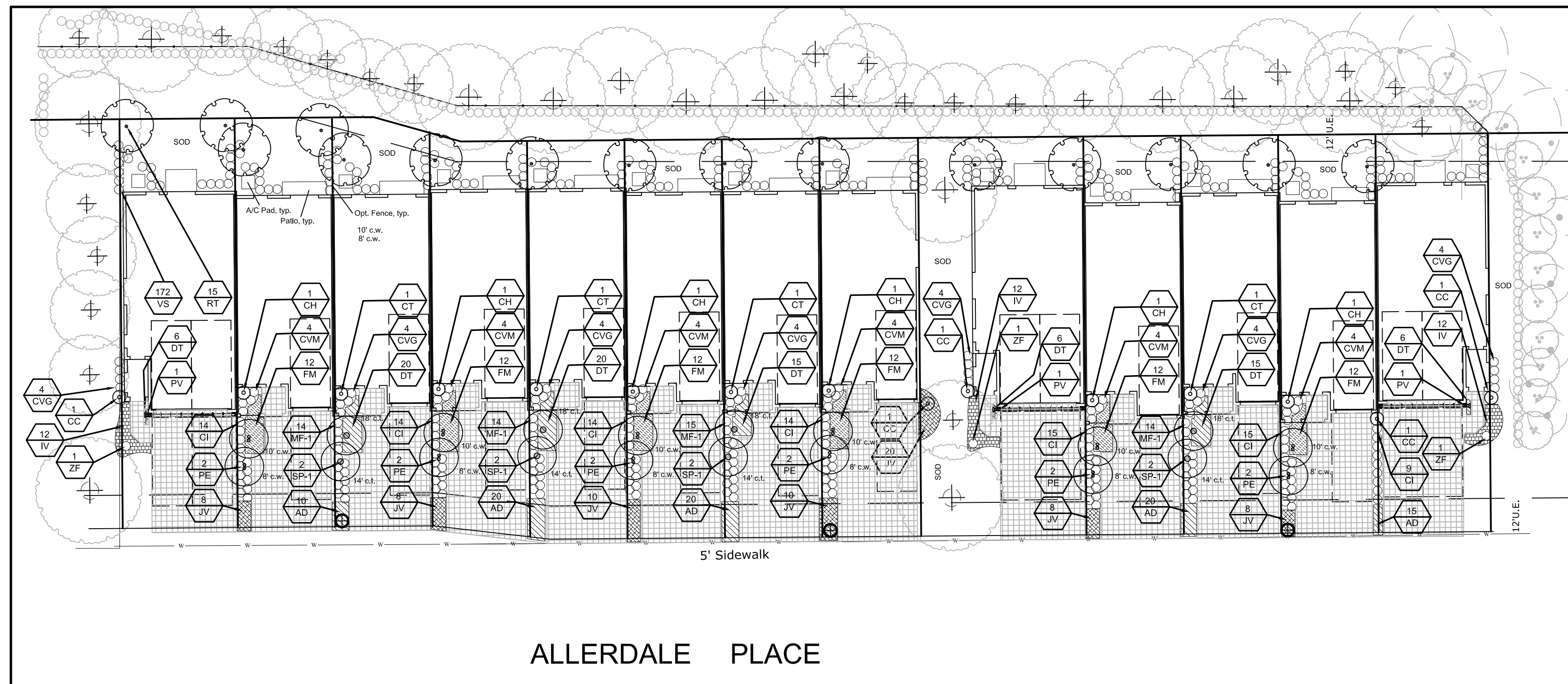
**Covelli Design Associates Inc.**  
 Urban Planning • Landscape Architecture  
 2395 N.W. Corporate Blvd., Suite 213  
 Fort Lauderdale, Florida 33451  
 561-910-0330  
 LC 26000287  
 covellidesign.com

**Landscape Plan**  
**Simonton Court**  
 Coconut Creek Florida

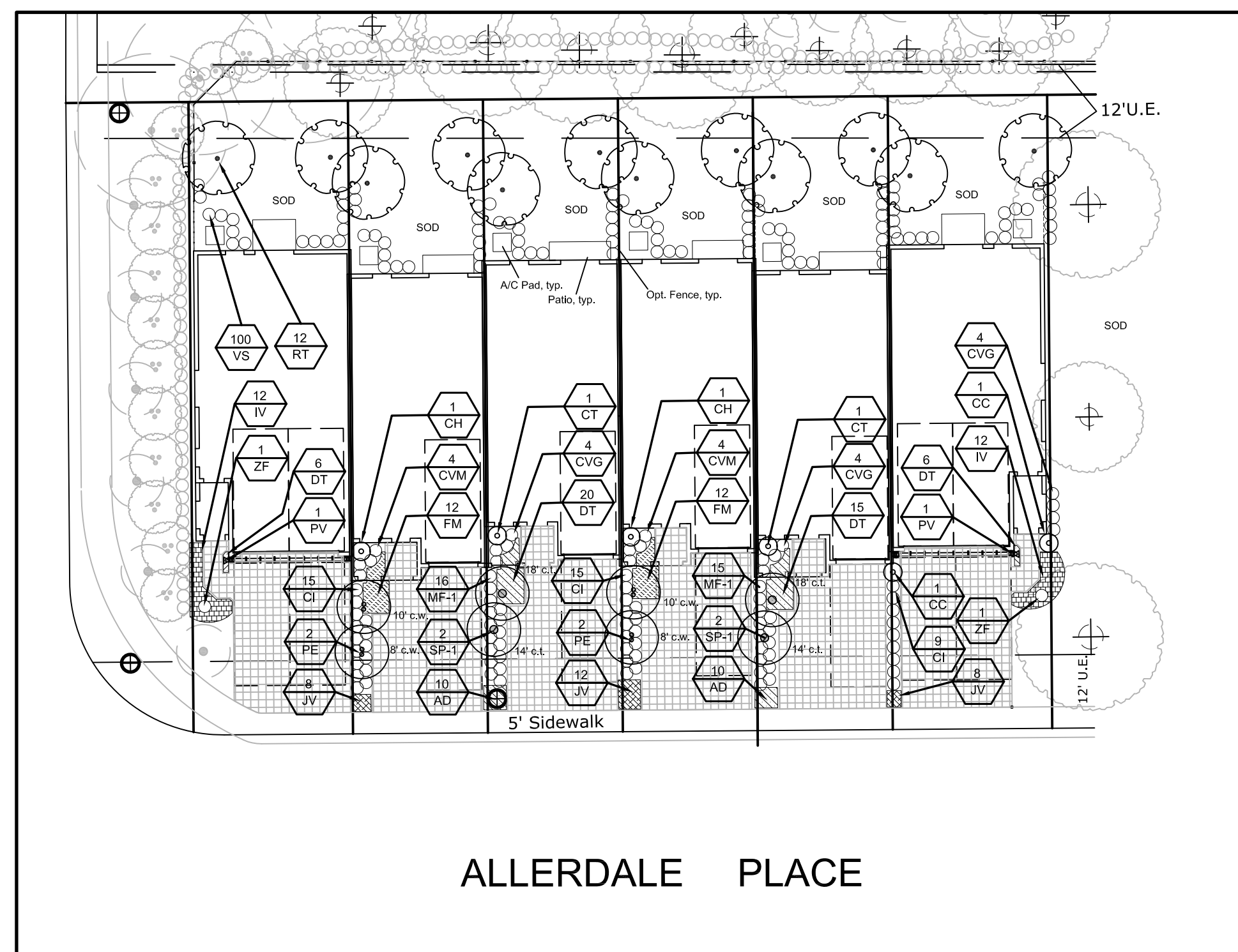
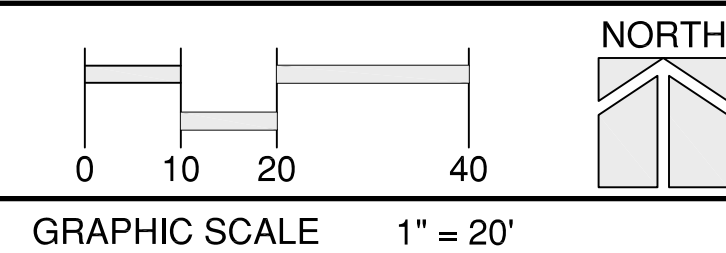
Date 09-29-2014  
 Scale As Noted  
 PN# 1176

SUBMITTED BY-  
 STEVEN E. TATE  
 LANDSCAPE ARCHITECT  
 No. 967  
 STATE OF FLORIDA  
 -FOR THE FIRM-  
 DATE 12-22-14

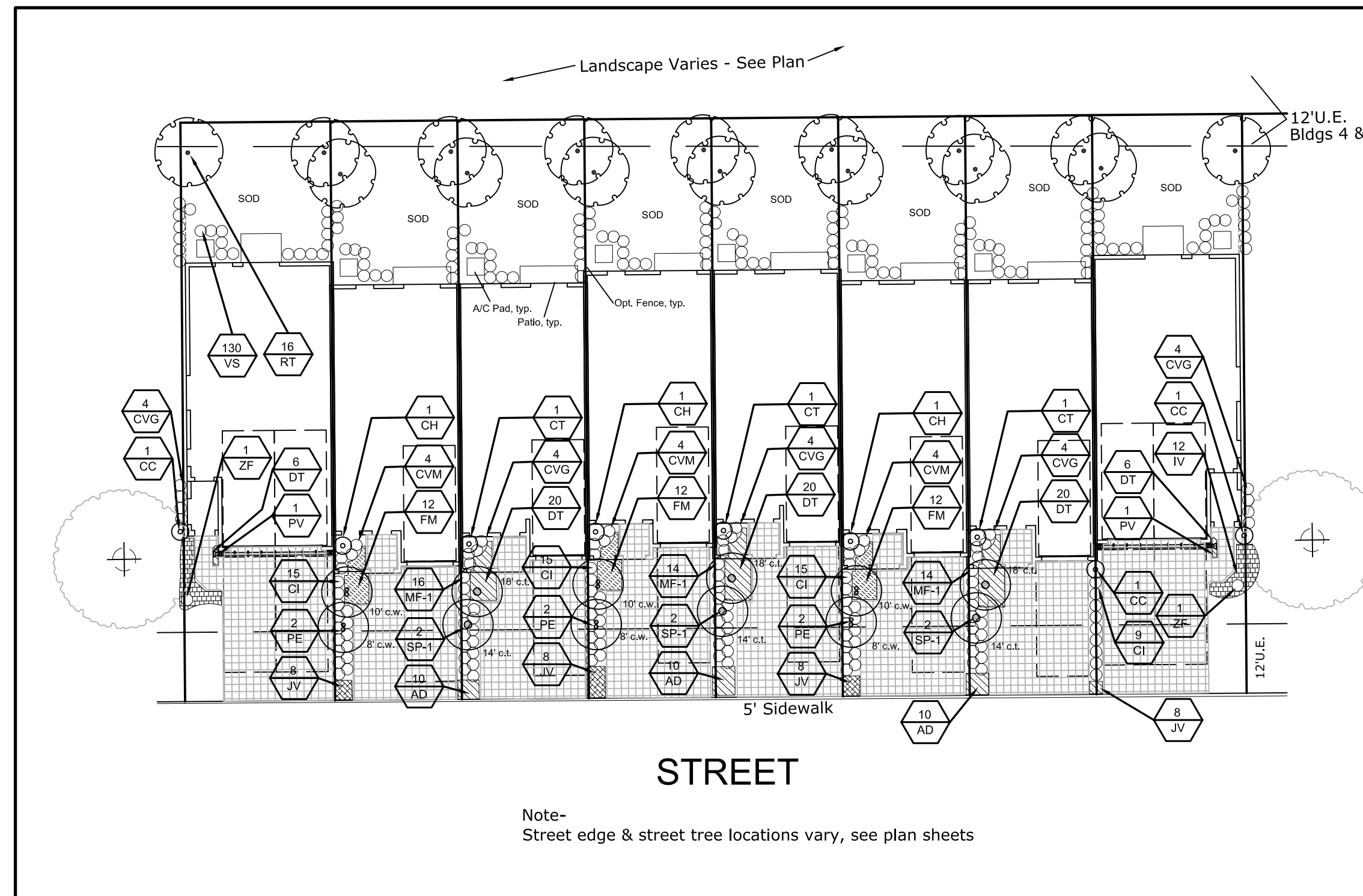
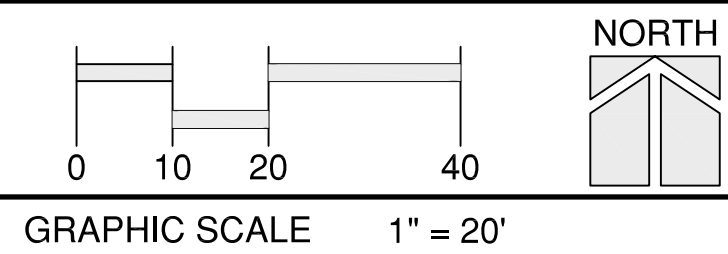
Drawing No.  
**LP-5**  
 OF 8



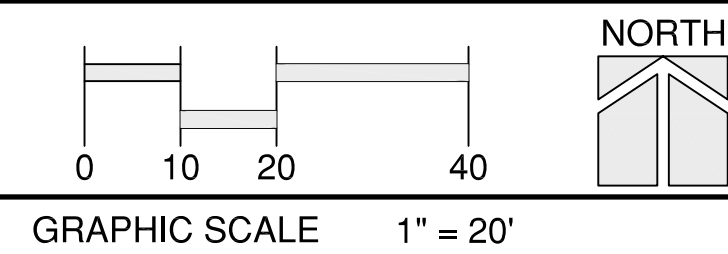
TYPICAL LOT LANDSCAPE PLAN  
RESIDENTIAL BUILDINGS 1 & 2



TYPICAL LOT LANDSCAPE PLAN  
RESIDENTIAL BUILDING 3



TYPICAL LOT LANDSCAPE PLAN  
RESIDENTIAL BUILDINGS 4, 5, & 16



**NOTE - SCREENING ABOVE GROUND EQUIPMENT**  
ALL ABOVE GROUND EQUIPMENT SHALL BE SCREENED ON 3 SIDES WITH 24" HT. COCOPALM HEDGE MATERIAL PLANTED AS PER SPECIFICATION IN PLANT KEY. HEDGE MATERIAL QUANTITIES WILL VARY DEPENDING ON LOCATION AND SIZE OF EQUIPMENT AND MAY NOT BE SHOWN ON PLAN IF EQUIP. IS ADDED AT A LATER DATE. PROVIDE A 3' CLEAR ZONE BETWEEN EQUIPMENT AND HEDGE OR AS MAY BE REQUIRED BY UTILITY.  
EQUIPMENT INCLUDES, BUT IS NOT LIMITED TO, A/C CONDENSERS, UTILITY EQUIPMENT, MECHANICAL EQUIPMENT, TRANSFORMER BOX, VALVES, EXHAUST VENTS, ETC.

**LANDSCAPE PLACEMENT NOTES**  
1. TREES SHALL BE MIN. 10' FROM WATER MAINS AND SHALL HAVE A 36" DEPTH ROOTBARRIER. SEE DETAIL SHEET LP-8.  
2. TREES SHALL BE A MIN. 15' FROM LIGHT POLES, SMALL TREES AND PALMS SHALL BE 10' FROM LIGHT POLES. SEE DETAIL LP-8.  
3. SEE FIRE HYDRANT CLEAR ZONE DETAIL ON LP-8.

See Sht. LP-1 Plant Key  
See Sht. LP-8 for Details & Notes

Revisions	SET	12/15/14

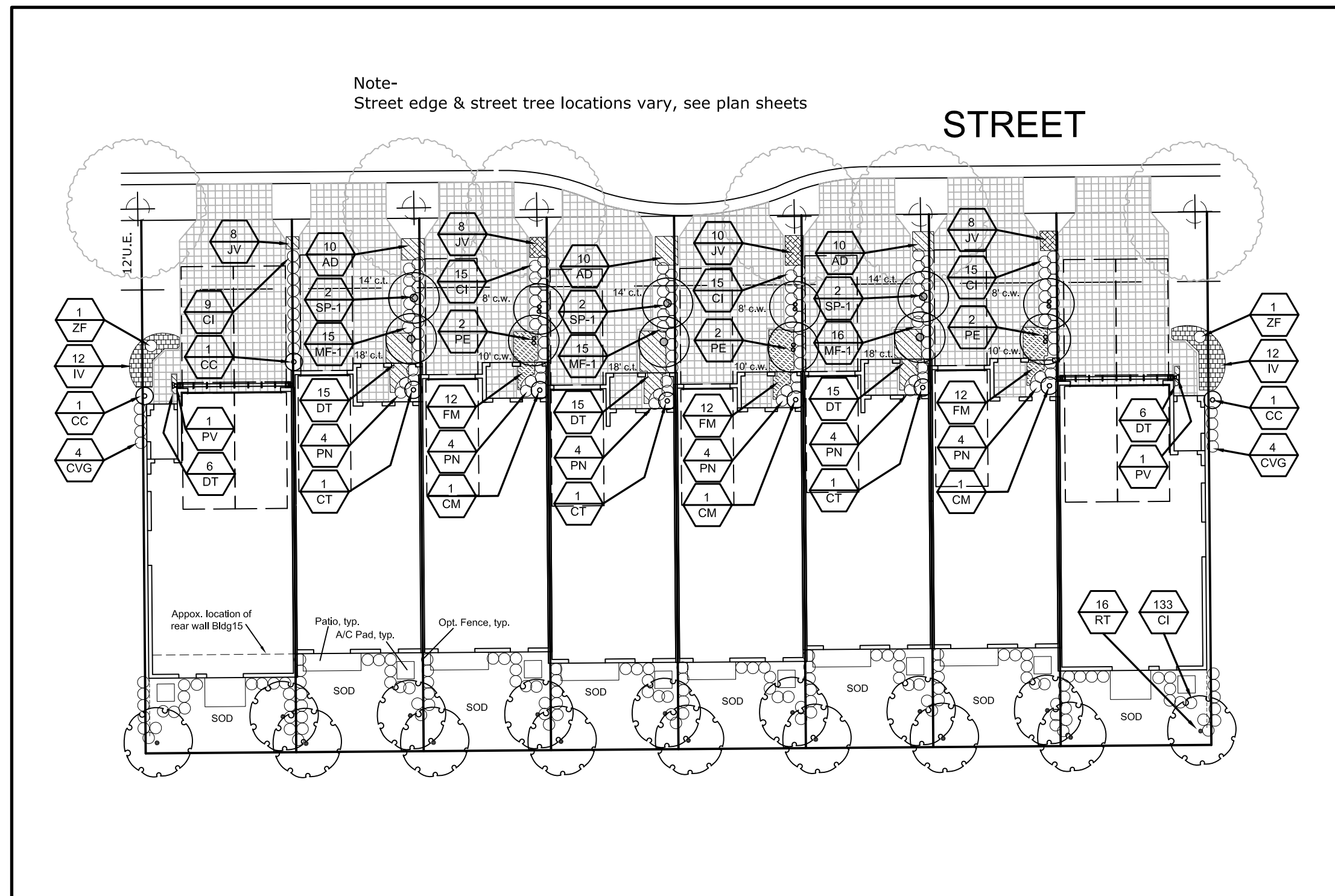
**Covelli Design Associates Inc.**  
Urban Planning • Landscape Architecture  
2395 N.W. Corporate Blvd., Suite 213  
Fort Lauderdale, Florida 33451  
561-910-0330  
LC 26000287  
covellidesign.com

**Landscape Plan**  
Simonton Court  
Coconut Creek, Florida

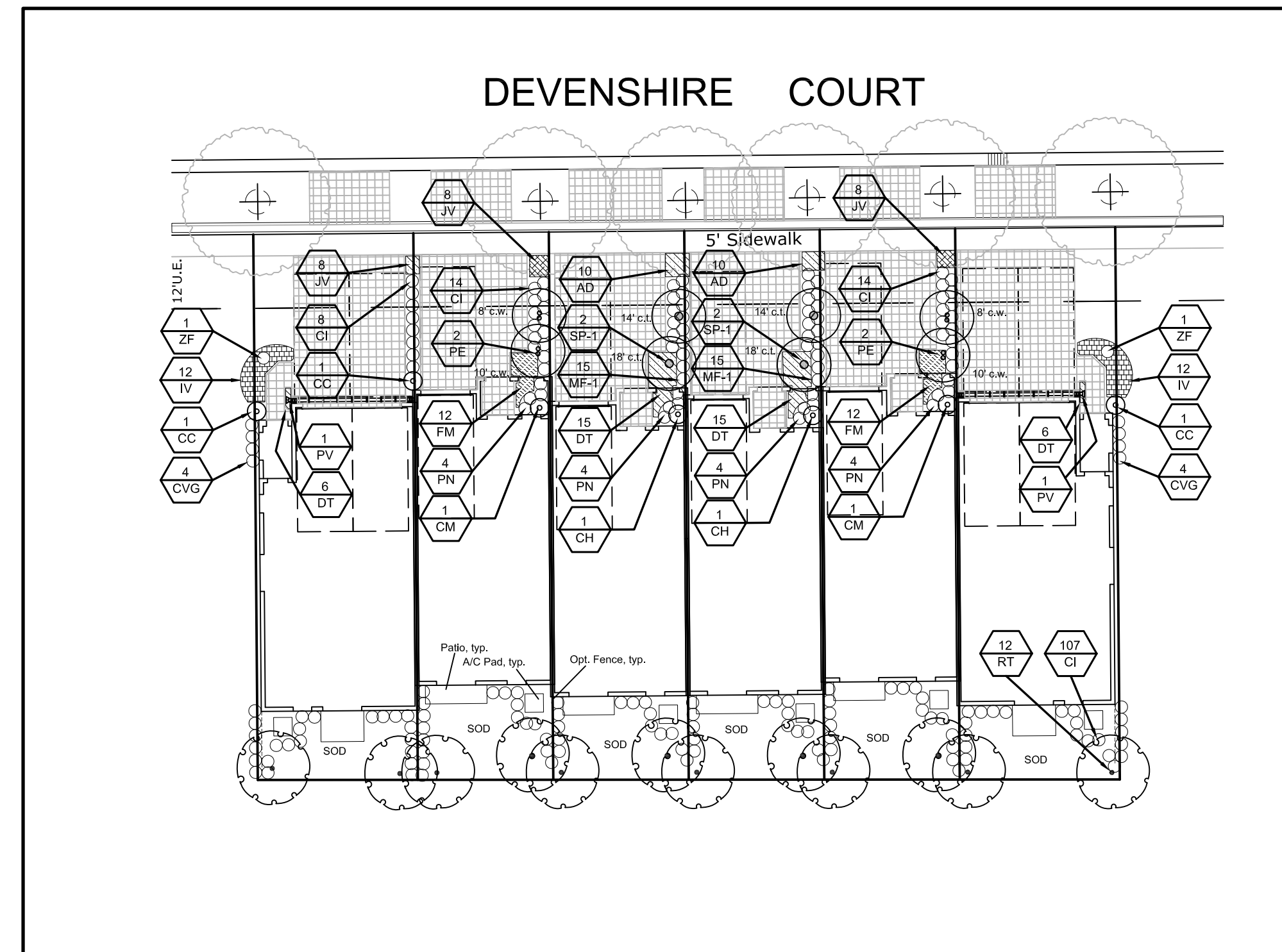
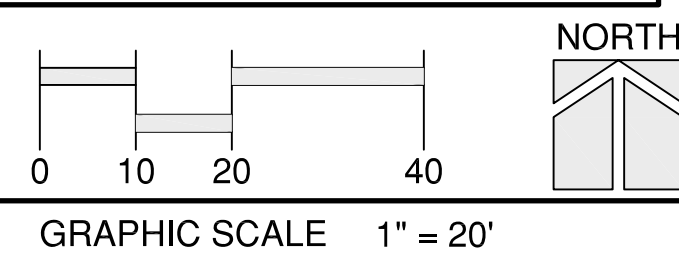
Date 09-29-2014  
Scale As Noted  
PN# 1178

SUBMITTED BY-  
STEVEN E. TATE  
LANDSCAPE ARCHITECT  
No. 967  
STATE OF FLORIDA  
-FOR THE FIRM-  
DATE 12-22-14

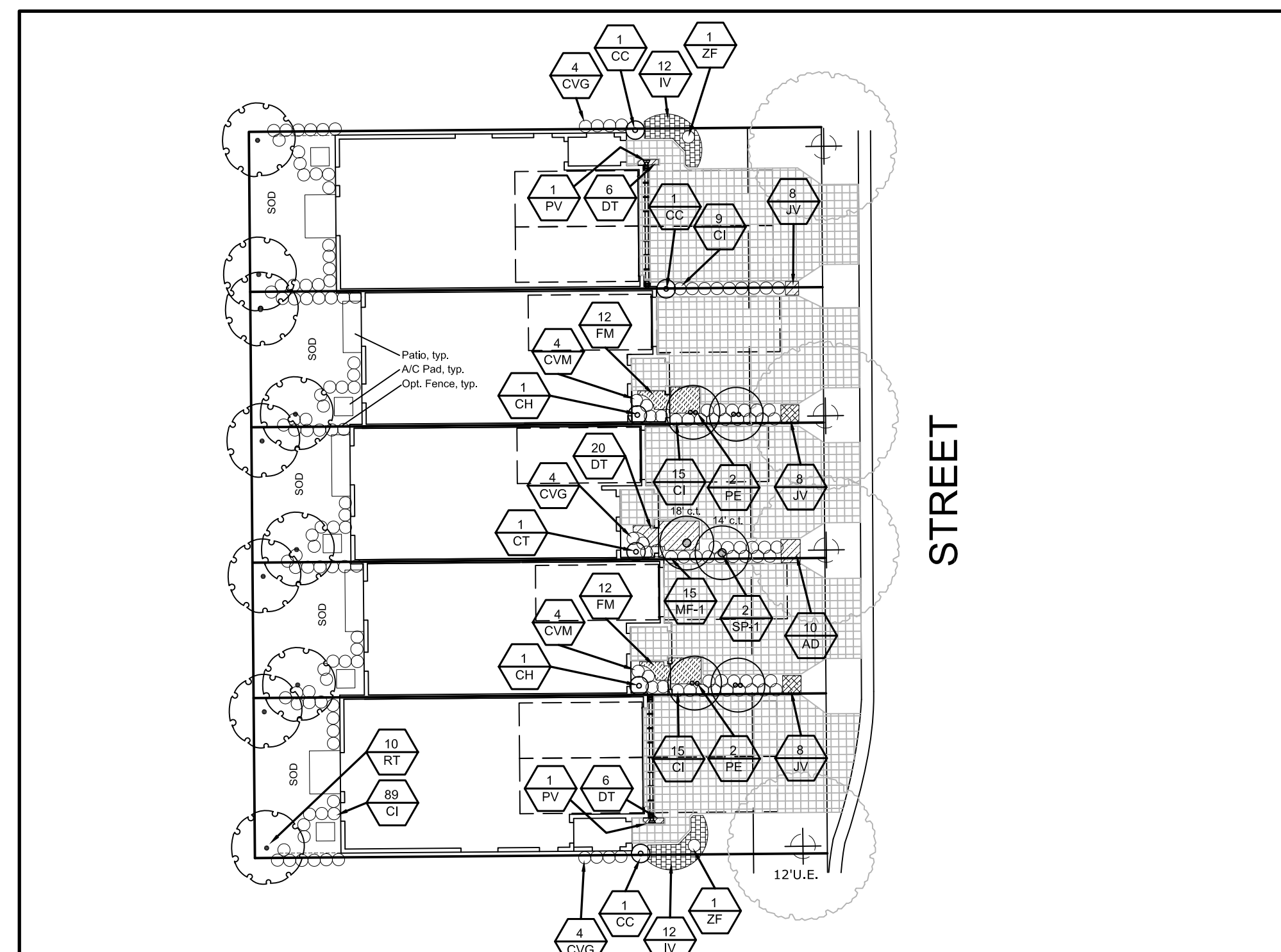
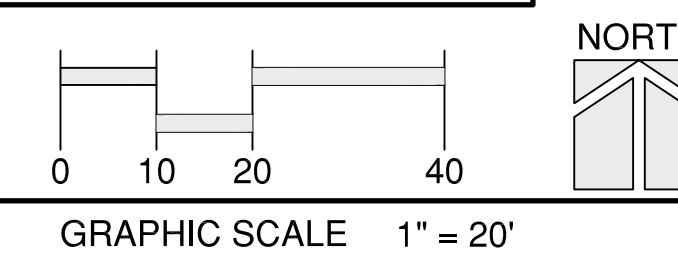
Drawing No.  
**LP-6**  
OF 8



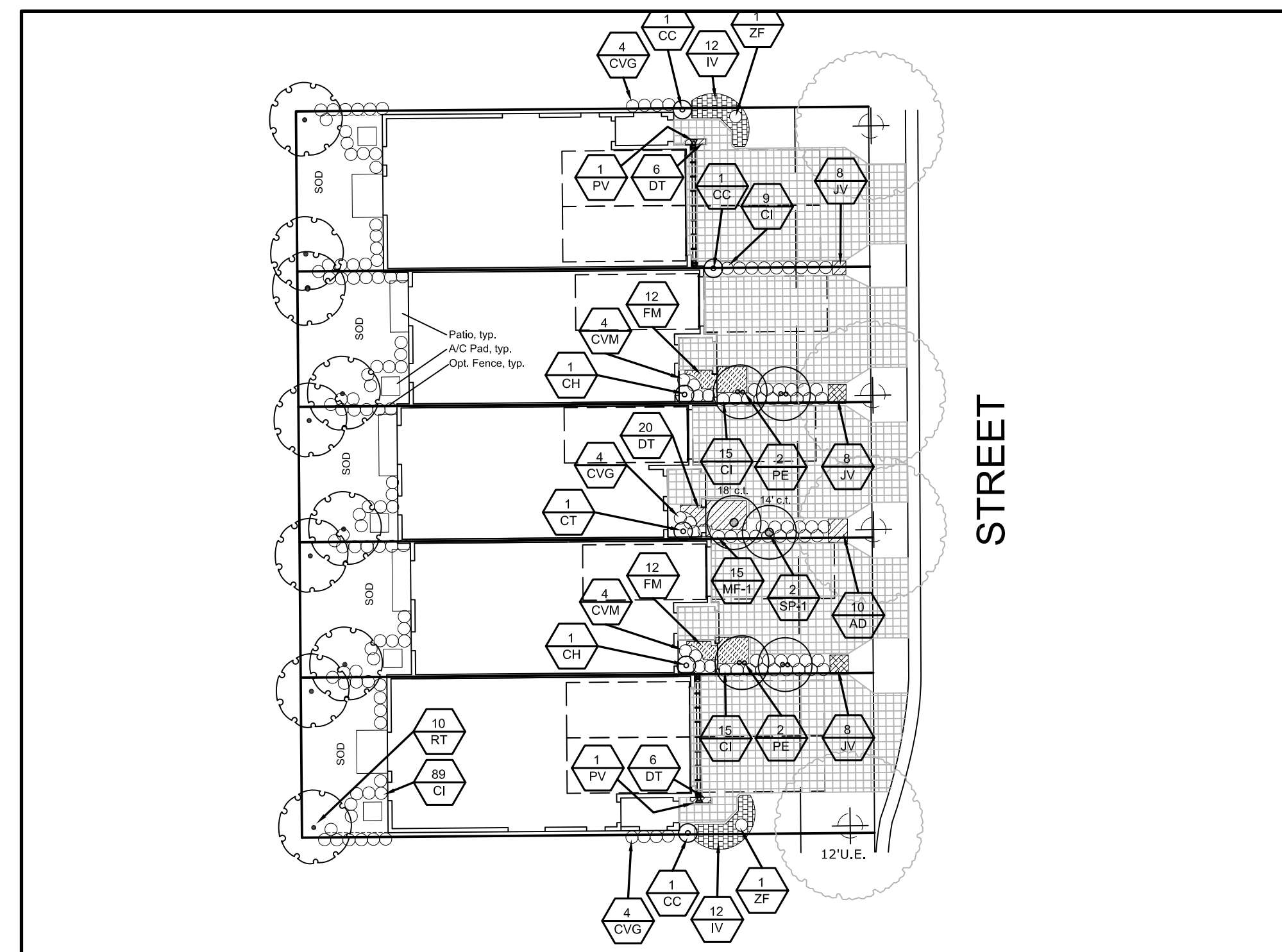
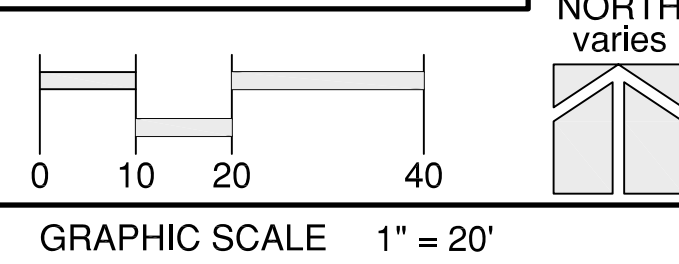
TYPICAL LOT LANDSCAPE PLAN  
RESIDENTIAL BUILDINGS 6, 11, 13, 14, & 15



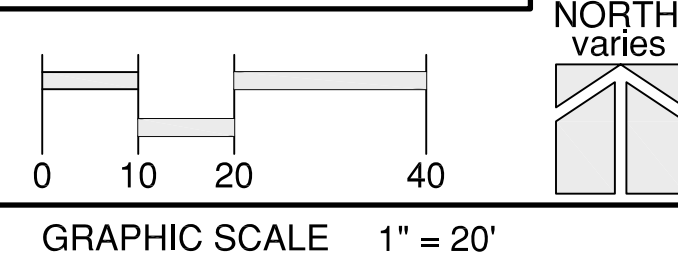
TYPICAL LOT LANDSCAPE PLAN  
RESIDENTIAL BUILDING 12



TYPICAL LOT LANDSCAPE PLAN  
RESIDENTIAL BUILDINGS 9, 10, 17, & 18



TYPICAL LOT LANDSCAPE PLAN  
RESIDENTIAL BUILDINGS 7, 8, 19, & 20



**NOTE - SCREENING ABOVE GROUND EQUIPMENT**

ALL ABOVE GROUND EQUIPMENT SHALL BE SCREENED ON 3 SIDES WITH 24" HT. COCOPLUM HEDGE MATERIAL PLANTED AS PER SPECIFICATION IN PLANT KEY. HEDGE MATERIAL QUANTITIES WILL VARY DEPENDING ON LOCATION AND SIZE OF EQUIPMENT AND MAY NOT BE SHOWN ON PLAN IF EQUIP. IS ADDED AT A LATER DATE. PROVIDE A 3' CLEAR ZONE BETWEEN EQUIPMENT AND HEDGE OR AS MAY BE REQUIRED BY UTILITY. EQUIPMENT INCLUDES, BUT IS NOT LIMITED TO, A/C CONDENSERS, UTILITY EQUIPMENT, MECHANICAL EQUIPMENT, TRANSFORMER BOX, VALVES, EXHAUST VENTS, ETC.

**LANDSCAPE PLACEMENT NOTES**

1. TREES SHALL BE MIN. 10' FROM WATER MAINS AND SHALL HAVE A 36" DEPTH ROOTBARRIER. SEE DETAIL SHEET LP-8.
2. TREES SHALL BE A MIN. 15' FROM LIGHT POLES. SMALL TREES AND PALMS SHALL BE 10' FROM LIGHT POLES. SEE DETAIL LP-8.
3. SEE FIRE HYDRANT CLEAR ZONE DETAIL ON LP-8.

NO.	DESCRIPTION	DATE

**Covelli Design Associates Inc.**  
 2295 N.W. Corporate Blvd., Suite 213  
 Fort Lauderdale, Florida 33451  
 561-910-0330  
 LC 26000287  
 covellidesign.com  
 Urban Planning • Landscape Architecture

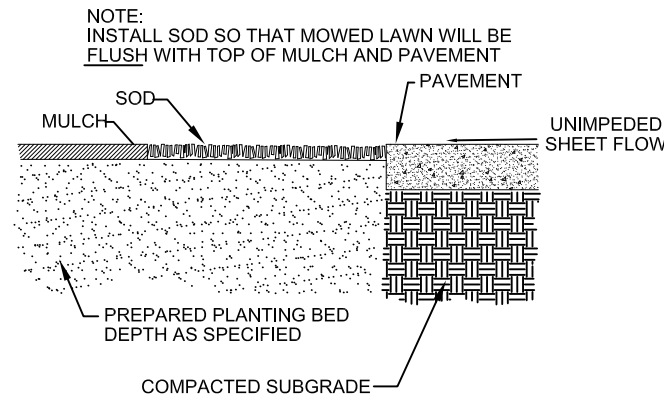
**Landscape Plan**  
**Simonton Court**  
 Coconut Creek Florida

Date 09-29-2014  
 Scale As Noted  
 PN# 1176

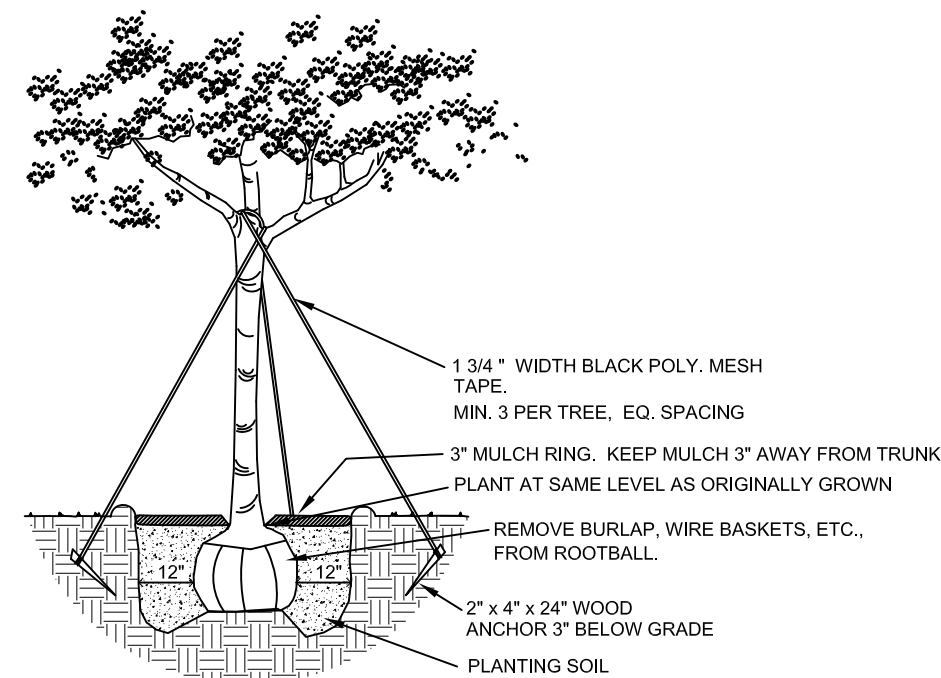
SUBMITTED BY-  
 STEVEN E. TATE  
 LANDSCAPE ARCHITECT  
 No. 967  
 STATE OF FLORIDA  
 -FOR THE FIRM-  
 DATE 12-22-14

Drawing No.  
**LP-6**  
 OF 8

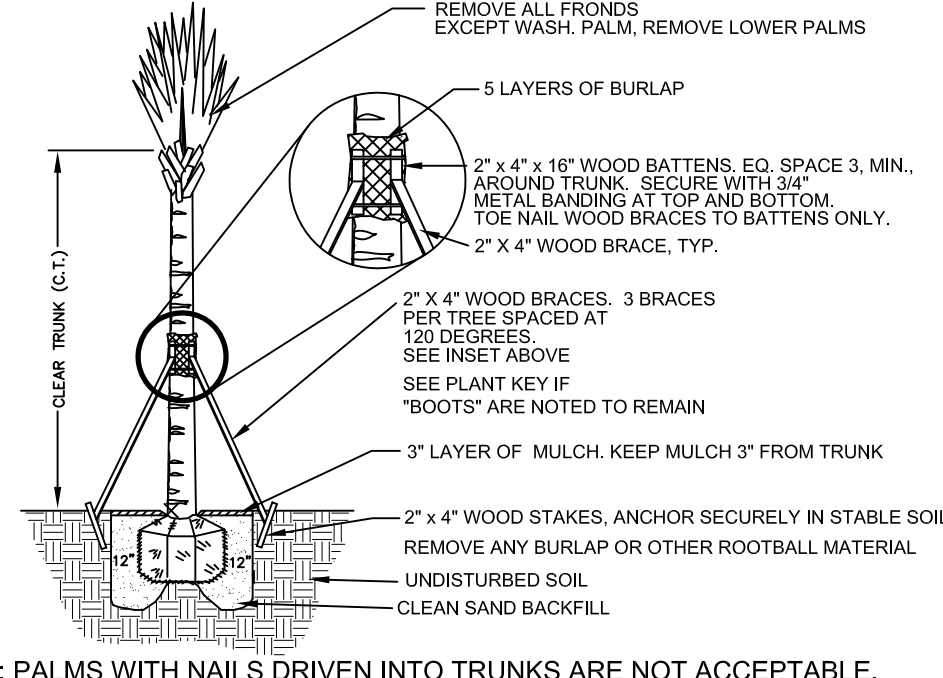
See Sht. LP-1 Plant Key  
 See Sht. LP-8 for Details & Notes



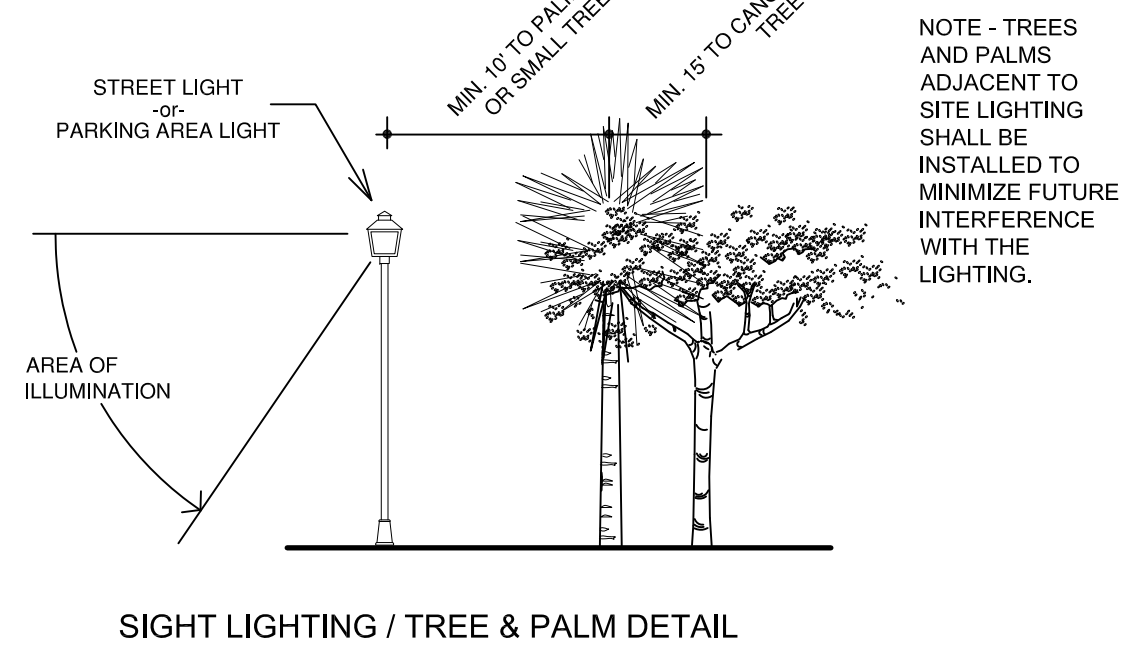
**SOD / MULCH INSTALLATION**  
NOT TO SCALE



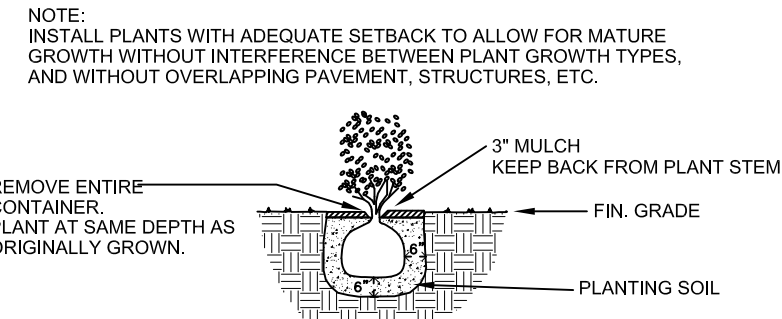
**TREE PLANTING DETAIL**  
NOTE: MULTI-TRUNK TREE PLANTING SIMILAR.  
NOT TO SCALE



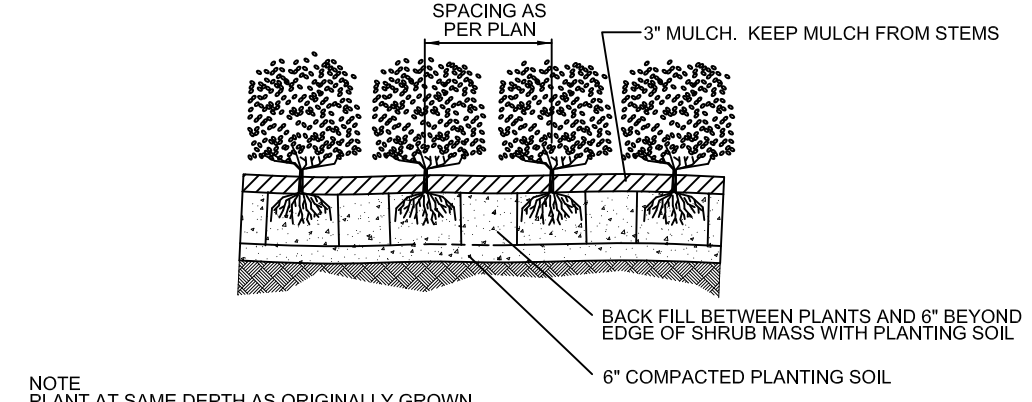
**CABBAGE PALM PLANTING DETAIL**  
**WASHINGTON PALM PLANTING DETAIL**  
(Relocated Palm Similar)  
NOT TO SCALE



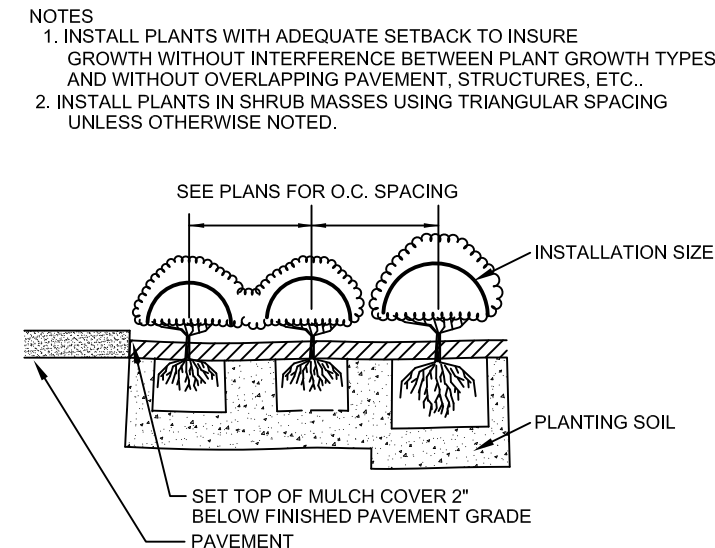
**SIGHT LIGHTING / TREE & PALM DETAIL**  
NOT TO SCALE



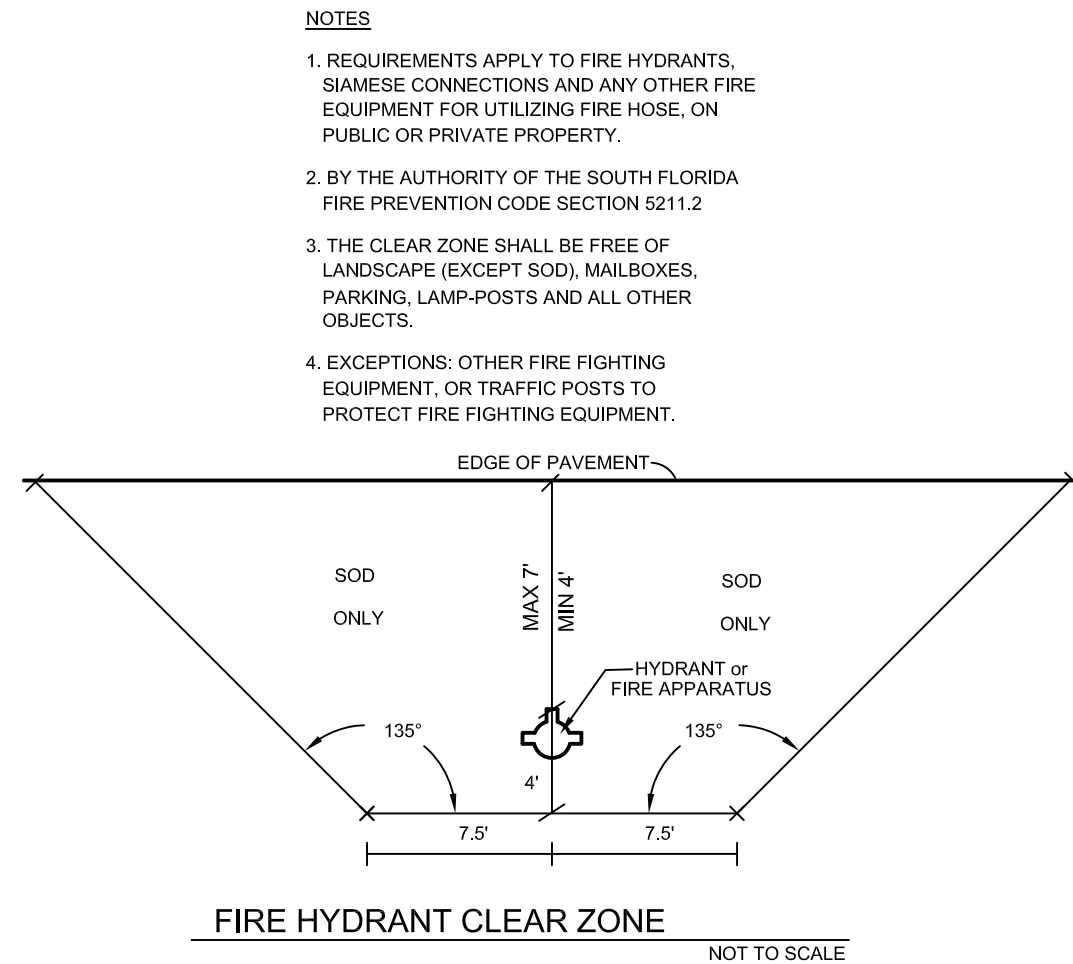
**SHRUB PLANTING DETAIL**  
NOT TO SCALE



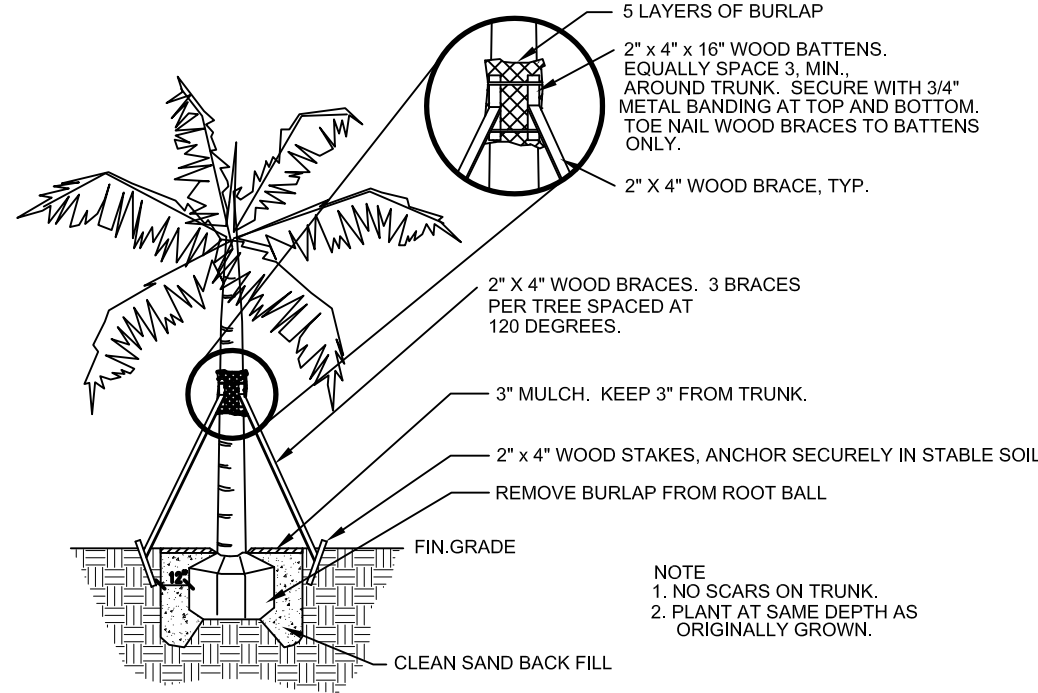
**SHRUB MASS PLANTING**  
NOTE: PLANT AT SAME DEPTH AS ORIGINALLY GROWN.  
NOT TO SCALE



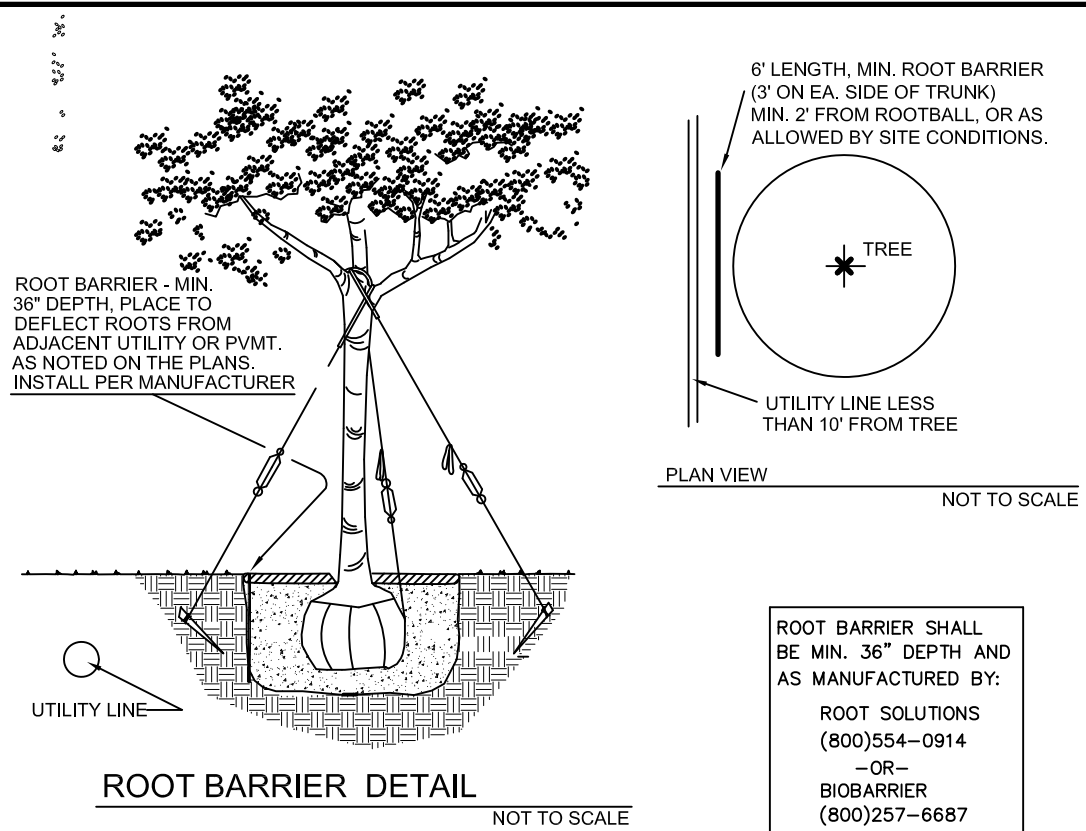
**SHRUB SPACING**  
NOT TO SCALE



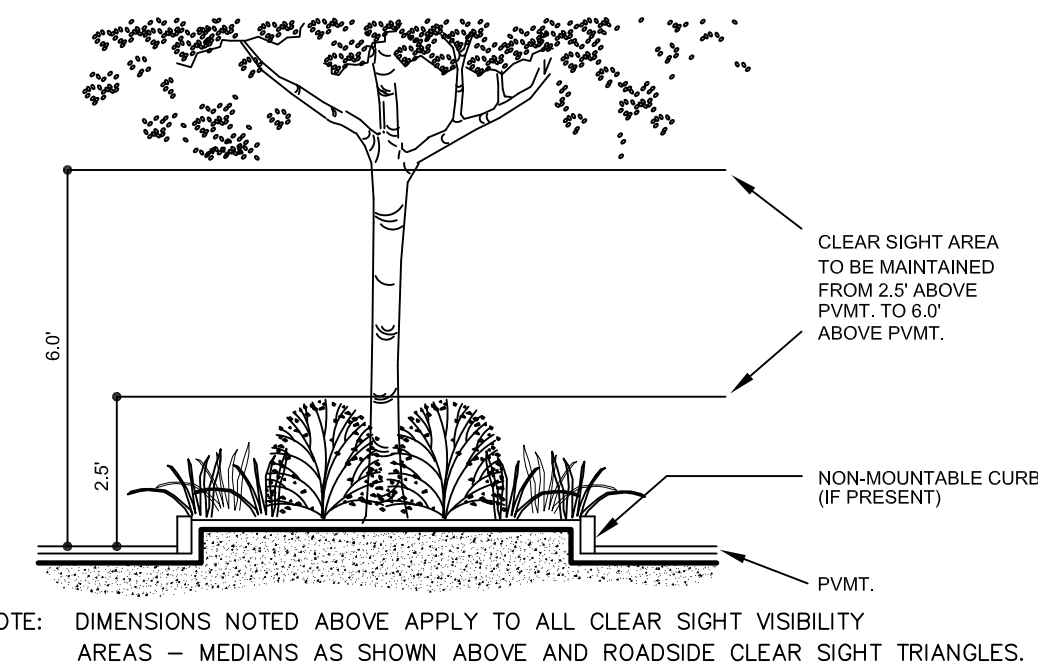
**FIRE HYDRANT CLEAR ZONE**  
NOT TO SCALE



**ROYAL PALM PLANTING DETAIL**  
(Coconut Palm Similar)  
NOT TO SCALE



**ROOT BARRIER DETAIL**  
NOT TO SCALE



**SECTION CLEAR SIGHT AREA WITHIN SAFE SIGHT DISTANCE TRIANGLE**  
NOT TO SCALE

ALWAYS CALL TWO FULL BUSINESS DAYS BEFORE YOU DIG

**CALL 811**  
sunshine 811.com

**811**  
Know what's below.  
Call before you dig.

**PALM RELOCATION NOTES**

- Palms shall be dug with the largest rootball possible.
- Prune fronds as follows:  
Cabbage Palms - Remove all fronds and loose leaf bases.  
Coconut Palms - Remove all fruit and flower spikes.
- Relocate palms to new location on site and install according to planting detail.
- Set up temporary watering system utilizing the existing or a temp. city water meter. Each palm shall receive two bubblers spaced on opposite sides of the rootball. Palms shall be watered to ensure rootball remains moist during the establishment period.  
SUBMIT A WATERING SCHEDULE AND SCHEMATIC LAYOUT FOR APPROVAL TO LANDSCAPE ARCHITECT.

**CITY OF COCONUT CREEK STANDARD LANDSCAPE COMMENTS**

- All landscape and specifications shall meet or exceed the minimum requirements as provided in the City of Coconut Creek Land Development Code. Plans are incomplete without written notes and specifications.
- All planting material shall meet or exceed Florida Grade #1 as specified in Grades and Standards for Nursery Plants, current edition. Trees shall not be tipped, topped, or shaped prior to installation.
  - Landscape shall be placed to edge of abutting streets, canals, lakes or other lands.
  - All mechanical equipment, air conditioning, irrigation pump stations and equipment, FPL transformers, pool pumps, etc., must be screened on three (3) sides by landscape shrubs.  
**NOTE:** The quantity of screening shrubs is in addition to the required number of shrubs as provided in the code calculation table. All screening shrubs shall be planted for proper operation of equipment being screened and/or per the requirements of the utility as necessary. All hedge material required for screening purposes shall be planted with branches touching. Adjust on-center spacing as necessary and/or provide additional plants to provide an adequate screen.
  - Sight distance concerns must be maintained for clear sight visibility from thirty (30) inches to seventy-two inches, tree trunks excluded. Measurement shall be made from top of root ball planted at proper elevation.
  - Guying/staking practices shall not permit nails, screws, wires, etc., to penetrate outer surfaces of trees, palms or other plant material. Trees, palms and plant material rejected due to this practice shall be replaced with the inspector on site.
  - Burlap material, wire cages, plastic/canvas straps, etc., must be cut and removed for the top one-half (1/2) depth of the root ball. Trees and shrubs grown in grow bags or grow bag type material must have such material REMOVED ENTIRELY prior to planting the tree or shrub.
  - All plant material shall be free of pests, insects, disease, weeds, etc.
  - All required landscape material shall be installed using a planting soil mix comprised of a type appropriate to the individual proposed plant material and the native soil found on the site.
  - All plant material shall be planted at the proper depth, as originally grown and/or so the top of the root ball is flush or slightly above finished grade immediately after planting. All trees should provide trunk taper when properly planted at the correct planting depth.
  - All plant material shall be watered in at time of planting to eliminate air pockets in the root zone area.
  - Color-treated or dyed mulch will not be accepted.
  - Upon completion of work, the site shall be cleared of all debris, superfluous materials, and equipment caused by this permit to the satisfaction of the inspector.
  - Refer to Coconut Creek Fire Equipment Clear Zone diagram to maintain a safe zone fronting fire hydrants.
  - Do not plant trees, shrubs or groundcover within Electric Meter Clear Zone. Provide a safe zone as described by the Electrical Inspector.
  - All landscaped areas shall be provided with an underground fully automatic irrigation system using pop-up sprinklers. System shall provide 100% coverage with a 50% overlap (minimum) using rust free water, except preserved areas remaining in natural state. A rain sensor device or switch shall be installed that will override the irrigation system when adequate rainfall has occurred. Water shall not be directed and/or provided onto impervious surfaces and/or be designed or installed to throw water over an impervious surface such as a sidewalk, etc. Hours of operation for all irrigation systems shall be limited to 5:00 p.m. to 8:00 a.m. only or as may be further restricted by South Florida Water Management District or other jurisdictional agency.
  - Irrigation permits and plans shall be submitted for approval at time of building permits.
  - All non-single family or duplex irrigation systems other than City water systems shall require a South Florida Water Management District water use permit prior to issuance of an irrigation permit and installation of the irrigation system as required.
  - All site amenities to include site street lights, landscape common open space, irrigation common open space, buffers, berms, landscape entry features, etc. leading up to and including the model center and/or first certificate of occupancy must be completed and functional prior to issuance of the first requested certificate of occupancy.
  - The height of all required, designed and installed berms shall be from the highest adjacent point whether it is the sidewalk, parking area, vehicular use area, surrounding ground, etc. Where a berm abuts a sidewalk, there shall be a one (1) foot level sod area adjacent to the sidewalk prior to the start of incline for the berm.
  - An inspection is required prior to the backfilling of trees/palms in all parking medians and islands.

**SUPPLEMENTAL LANDSCAPE NOTES**

- All sizes shown for plant material on the plan are to be considered as minimums. All plant material must meet or exceed these minimum requirements for both height and spread. Any other requirements for specific shape or effect as noted on the plan will also be required for acceptance.
- All plant material and work shall be guaranteed for one-year from date of final job acceptance. During the one year guarantee, any plant material that dies or is in an unhealthy condition shall be replaced with the same plant type at least equal to the size and quality originally specified. The replacement material shall also be guaranteed for one year from the date of its installation. The guarantee will be null and void if plant material is damaged or killed by lightning, hurricane force winds, hail or freeze.
- The landscape contractor is responsible for verifying there are no conflicts with above or below ground utilities prior to commencing landscape installation. notify owner if conflicts exist.
- Any trees to remain shall be pruned in such a way to promote proper horticultural and natural tree growth.
- All trees and palms shall be placed a minimum of 10' from underground utilities. see details.
- Ground covers shall be spaced as noted or to insure ground cover within 6 months of planting.
- Place sod on smooth sod bed. Remove any rocks and other debris prior to sodding. Sod shall be placed so there are no gaps or voids between pieces. On slopes place sod at 90° to slope direction. Stake sod or otherwise ensure its establishment on slopes.
- Mulch shall be eucalyptus or melaleuca mulch. All trees in sod areas are to have a 30" ring covered with a 3" layer of mulch. Dyed mulch is not acceptable.
- All plant material shall be fertilized with a tablet form balanced fertilizer containing minor elements. Follow manufacturer's recommendations for rates. Sod areas shall be fertilized with a granular form balanced fertilizer with minor elements following manufacturer's recommendations for rates.
- Planting soil shall be a mix of 1/3 native soil, 1/3 clean sand & 1/3 peat.
- All landscaping shall be installed in a workmanlike manner, and according to accepted good planting procedures with quality plant materials as herein described.

12/15/14	SET
Revisions pursuant to staff review dated 10/20/14	
Revisions	

2395 N.W. Corporate Blvd., Suite 213  
Fort Lauderdale, Florida 33451  
561-910-0330

**Covelli Design Associates Inc.**  
Urban Planning • Landscape Architecture

LC 26000287  
covellidesign.com

**Landscape Details & Notes**

Simonton Court  
Coconut Creek  
Florida

Date	09-29-2014
Scale	As noted
PN#	1065

Steven E. Tate  
Landscape Architect  
No. 967  
State of Florida  
-FOR THE FIRM-  
Date 12-22-14

Drawing No.  
**LP-8**  
OF 8