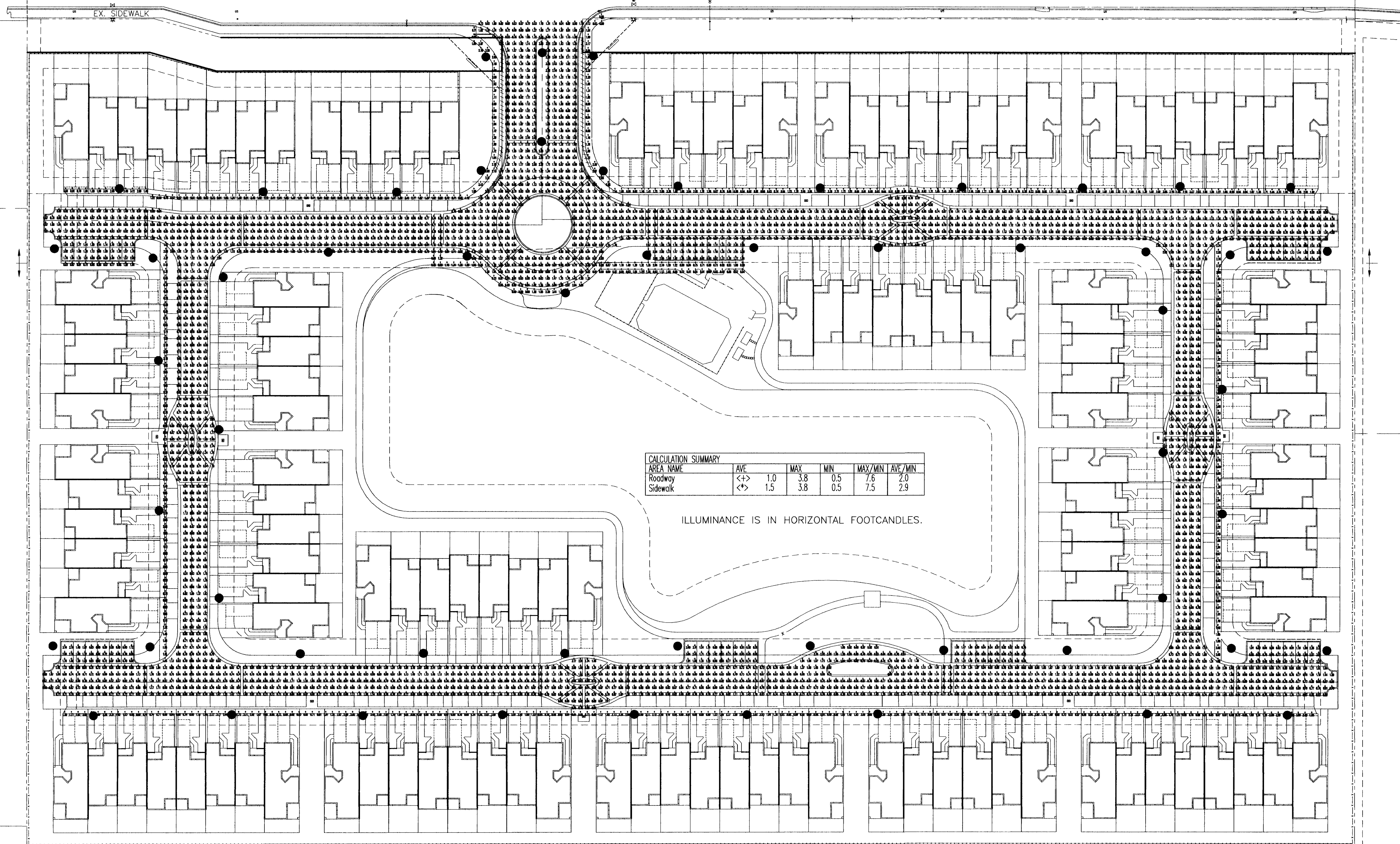


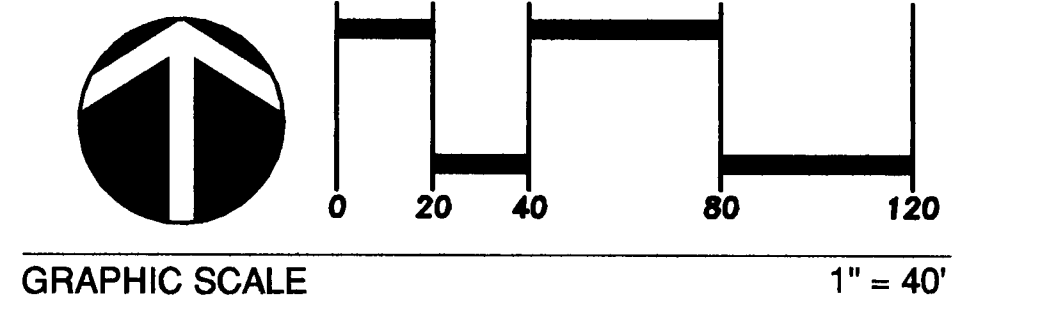
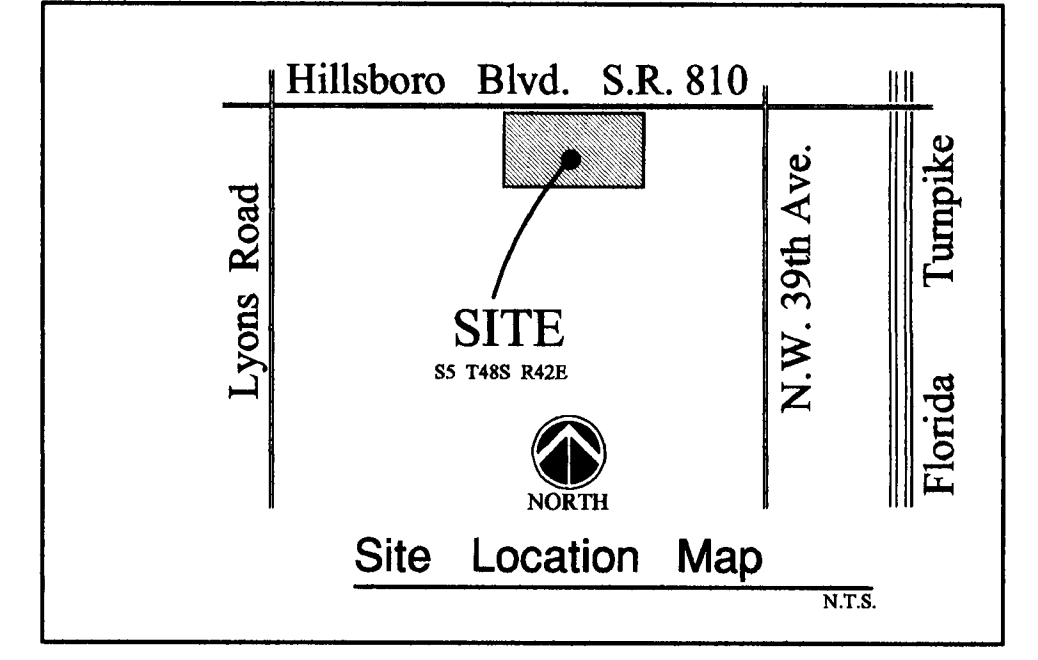
HILLSBORO BOULEVARD (STATE ROAD 810)

ASPHALT ROADWAY



CALCULATION SUMMARY						
AREA NAME	AVE	MAX	MIN	MAX/MIN	AVE/MIN	
Roadway	<+>	1.0	3.8	0.5	7.6	2.0
Sidewalk	<+>	1.5	3.8	0.5	7.5	2.9

ILLUMINANCE IS IN HORIZONTAL FOOTCANDLES.

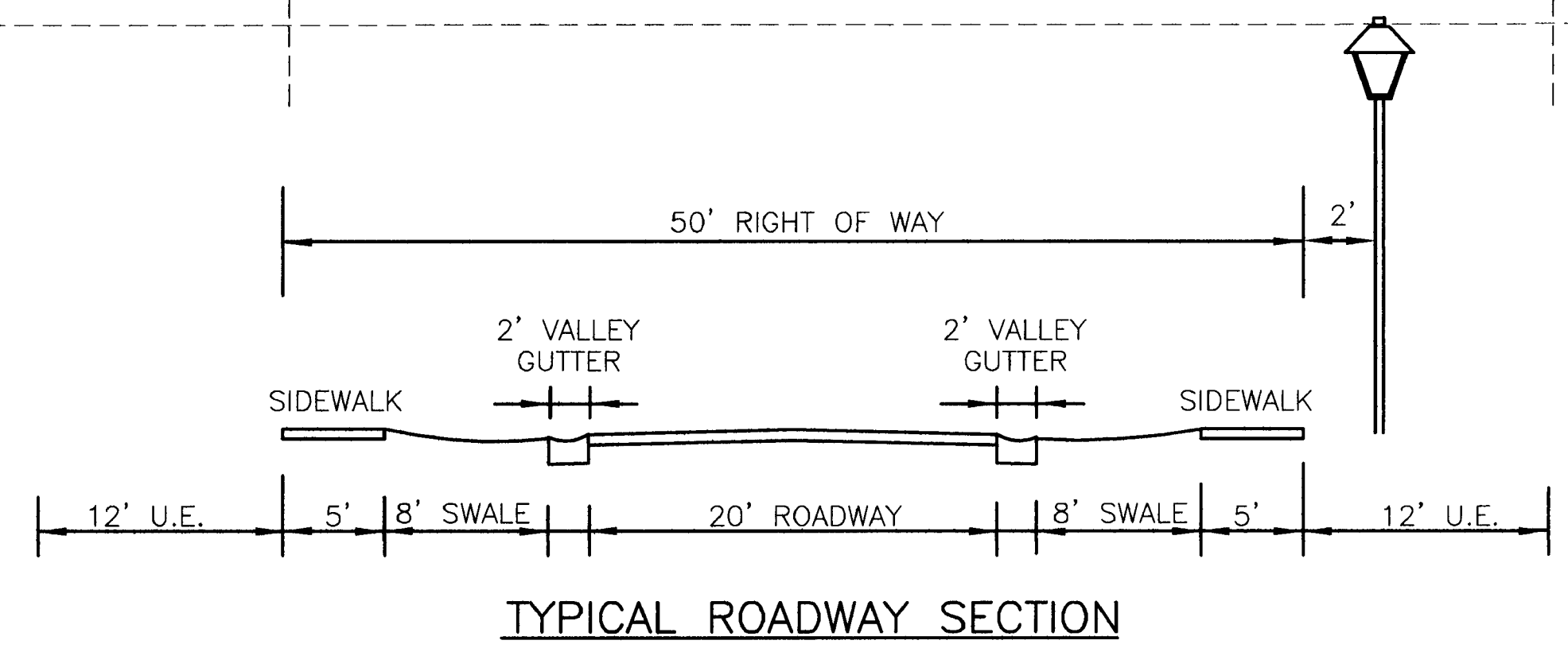


ROADWAY LIGHTING NOTES:

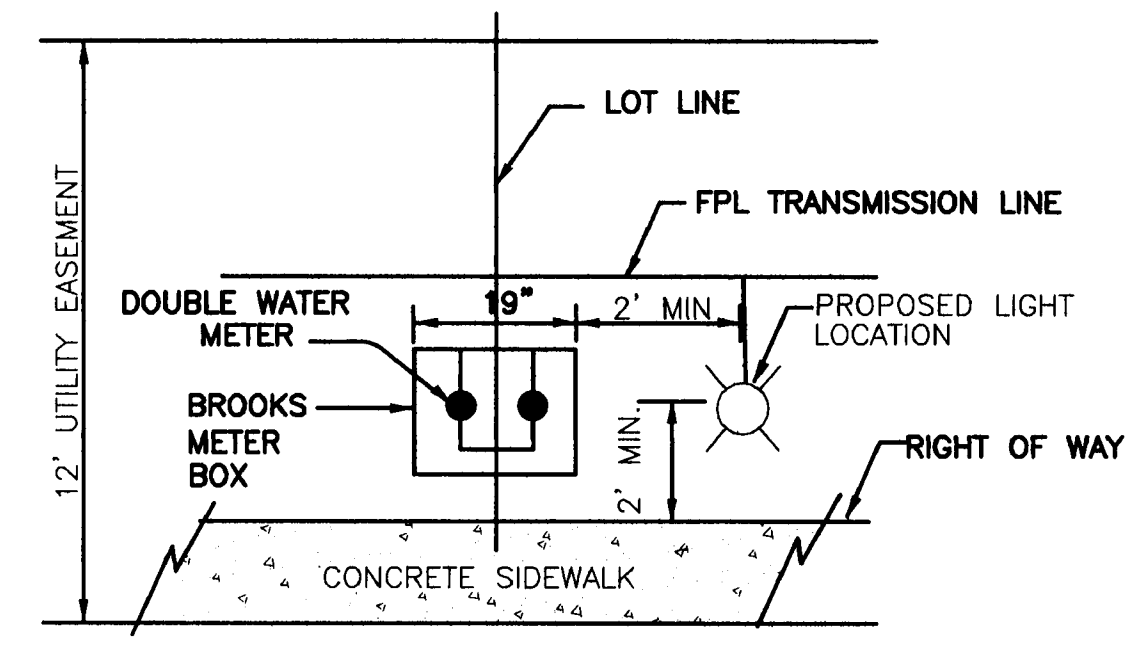
- LUMINAIRE SHALL BE AS INDICATED PER LUMINAIRE NOTES.
- LUMINAIRE SPECIFICATION:
100 WATT HIGH PRESSURE SODIUM, 15' MOUNTING HEIGHT AS INDICATED, BLACK FINISH ALUMINIUM HOUSING, ACRYLIC LENS.
SUPPLIED AND INSTALLED BY F.P.L.
- POLE SPECIFICATIONS:
15' MOUNTING HEIGHT, BLACK FIBERGLASS TO MEET SOUTH FLORIDA BUILDING CODE REQUIREMENTS, AS SUPPLIED AND INSTALLED BY F.P.L.
- ALL WIRING SHALL BE UNDERGROUND, 24" MIN. CONDUIT BURIAL DEPTH.
- LOCATION OF FIXTURES SHALL BE A MINIMUM OF 4' FROM ALL UTILITIES.
- LIGHTING SHALL MEET THE CITY OF COCONUT CREEK CODE.
- PROPOSED FIXTURE SHALL BE SETBACK 2' FROM SIDEWALK

ROADWAY LUMINAIRES:

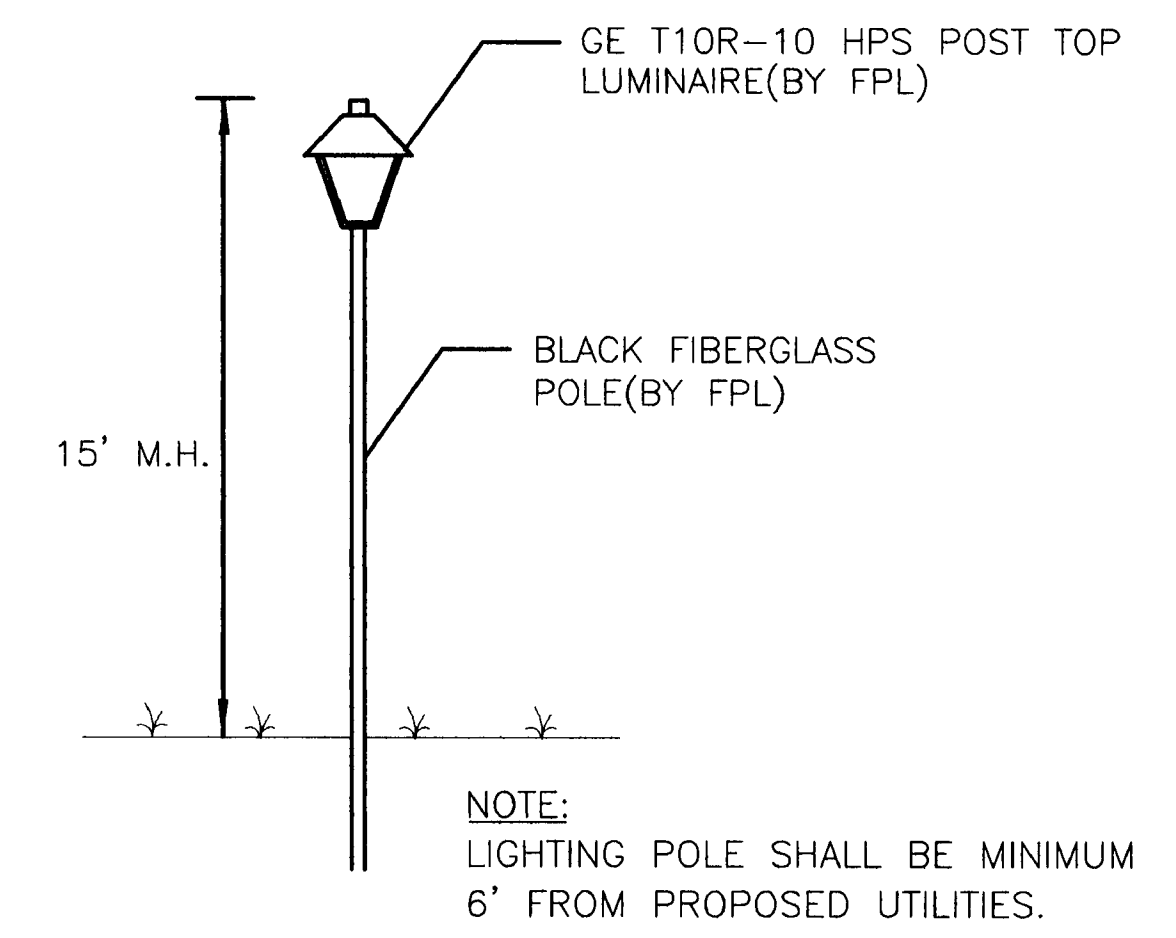
- GENERAL ELECTRIC T10R-10, 100 WATT HIGH PRESSURE SODIUM LUMINAIRE WITH A MOUNTING HEIGHT OF 15'. INITIAL LUMENS PER LAMP = 9500
- LIGHT LOSS FACTOR: 1.00
- NUMBER OF POLES: 58
- SUPPLIED AND INSTALLED BY F.P.L.



TYPICAL ROADWAY SECTION
N.T.S.
INSTALLED BY FPL



LIGHT POLE LOCATION
N.T.S.



ROADWAY LIGHTING DETAIL
N.T.S.

NOTE:
LIGHTING POLE SHALL BE MINIMUM 6' FROM PROPOSED UTILITIES.

HILLERS ELECTRICAL ENGINEERING, INC.
23257 STATE ROAD 7, SUITE 100
BOCA RATON, FLORIDA 33428
(561) 451-9165
(561) 451-4888 FAX
LICENSE NO. EB 000877

BY	
DATE	
REVISIONS	
FILE NAME	CWJ/EI

CAULFIELD & WHEELER, INC.
CIVIL ENGINEERING - LAND PLANNING
LANDSCAPE ARCHITECTURE - SURVEYING
7301A W. PALMETTO PARK ROAD - SUITE 00A
BOCA RATON, FLORIDA 33433
PHONE (561)-392-1991 / FAX (561)-750-1452

Site Lighting Calculation Plan
Simonton Court
Coconut Creek, Florida

DATE	03/31/05
DRAWN BY	SH
F.B./PG.	N/A
SCALE	1" = 40'

V. Miller
9/7/05
PAUL F. HILLERS, PE
NO. 41022

JOB # 4633
SHT. NO.
E-1
OF 1 SHEETS