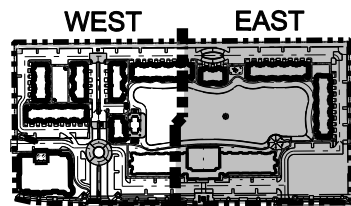


**LEGEND**

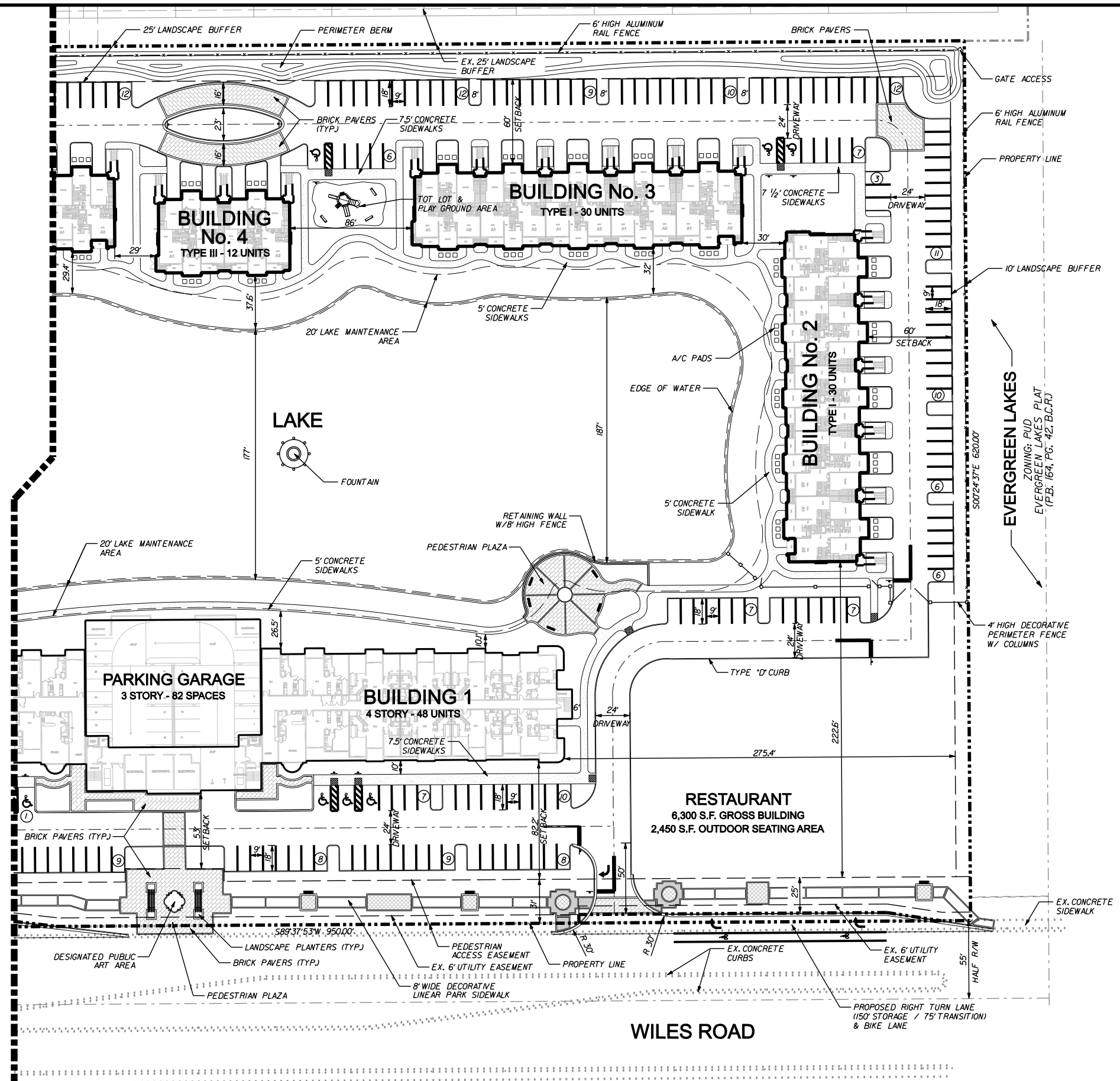
- 100'-24" R.C.P. LENGTH - SIZE - MATERIAL
- PAVEMENT FLOW LINE
- PAVEMENT RIDGE LINE
- 0.60% PAVEMENT SLOPE & DIRECTION
- X FLOW DIRECTION
- (5.00) PROPOSED GRADE
- (5.00) EXISTING GRADE
- F.F. +12.00 FINISHED FLOOR ELEVATION
- SEWER / DRAINAGE MANHOLE
- DRAINAGE INLET
- CURB INLET
- YARD DRAIN BASIN
- Y DOUBLE SEWER SERVICE
- SINGLE SEWER SERVICE
- FIRE HYDRANT
- TAPPING SLEEVE & VALVE
- DOUBLE WATER METER
- SINGLE WATER METER
- GATE VALVE
- EXISTING VALVE
- EXISTING FIRE HYDRANT
- BACTERIOLOGICAL SAMPLING POINT
- R.C.P. REINFORCED CONCRETE PIPE
- H.D.P.E. HIGH DENSITY POLYETHYLENE PIPE
- C.A.P. CORRUGATED ALUMINUM PIPE
- W.M. WATER MAIN
- G.V. GATE VALVE
- F.H. FIRE HYDRANT
- R.E. RIM ELEVATION
- I.E. INVERT ELEVATION
- E.O.P. EDGE OF PAVEMENT
- P.R.B. POLLUTION RETARDANT Baffle
- D.W.E. DESIGN WATER ELEVATION
- /// SAWCUT & WIDENING

**48 HOURS BEFORE DIGGING**  
 BROWARD - PALM BEACH - INDIAN RIVER  
 ST. LUCIE - MARTIN COUNTIES  
**CALL TOLL FREE**  
**1-800-432-4770**  
 SUNSHINE STATE 1 CALL  
 UNDERGROUND UTILITIES  
 NOTIFICATION CENTER



**KEY MAP**

MATCH LINE - SEE SHEET SP-3



NO.	DATE	BY	REVISION
6	5/27/10	M.K.	REVISED PER D.R.C. REVIEW COMMENTS
5	1/22/10	A.Q.	REVISED PER D.R.C. REVIEW COMMENTS
4	12/7/09	A.Q.	REVISED PER D.R.C. REVIEW COMMENTS
3	6/25/09	M.K.	UPDATED SITE PLAN & REVISED PER D.R.C. REVIEW COMMENTS
2	9/26/08	M.K.	REVISED PER D.R.C. REVIEW COMMENTS
1	6/25/08	G.H.	REVISED PER D.R.C. REVIEW COMMENTS

Designed by: A.Q. Date: 4/08  
 Drawn by: G.H. Date: 4/08  
 Checked by: N.S. Date: 4/08

Approved by: ANTONIO QUEVEDO  
 Date: 10/21/2010  
 Registered Engineer Number 59471  
 State of Florida

**HSQ GROUP, INC.**  
 Consulting Engineers • Planners • Transportation  
 1489 West Palmetto Park Road, Suite 340  
 Boca Raton, Florida 33486 (561) 392-0221  
 Authorization Number 26258

**BEL LAGO**  
**SITE PLAN - EAST**

PROJECT NUMBER  
**0906-14**  
 SHEET NUMBER  
**SP-4**