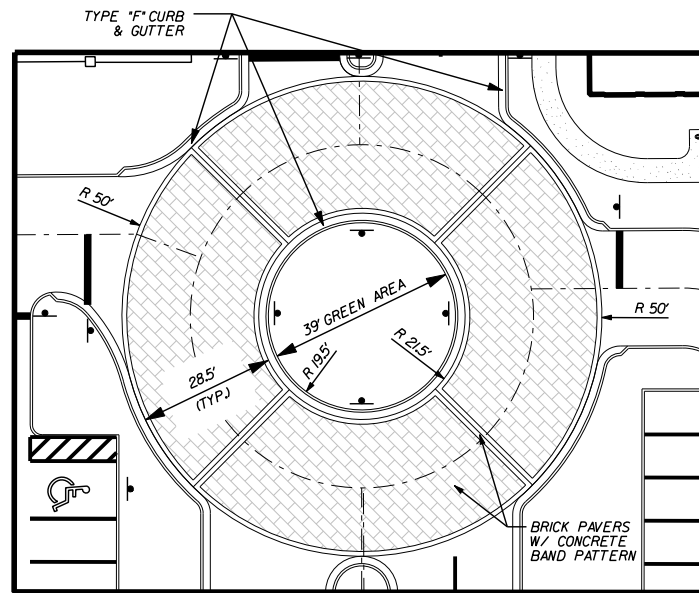


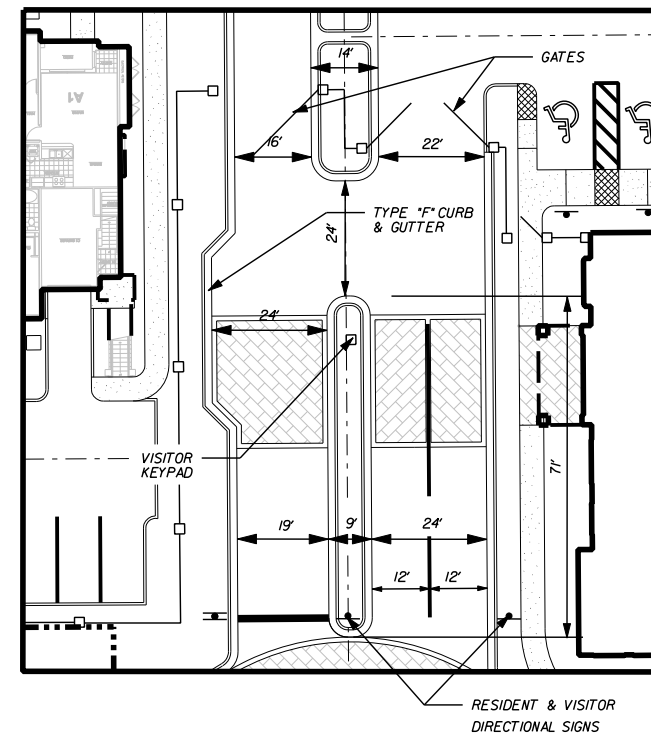
**MAIN ENTRANCE @ WILES ROAD**

SCALE: 1"=20'



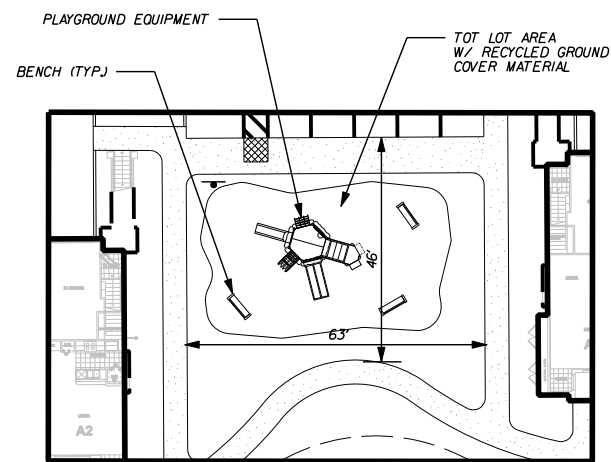
**ROUND-A-BOUT**

SCALE: 1"=20'



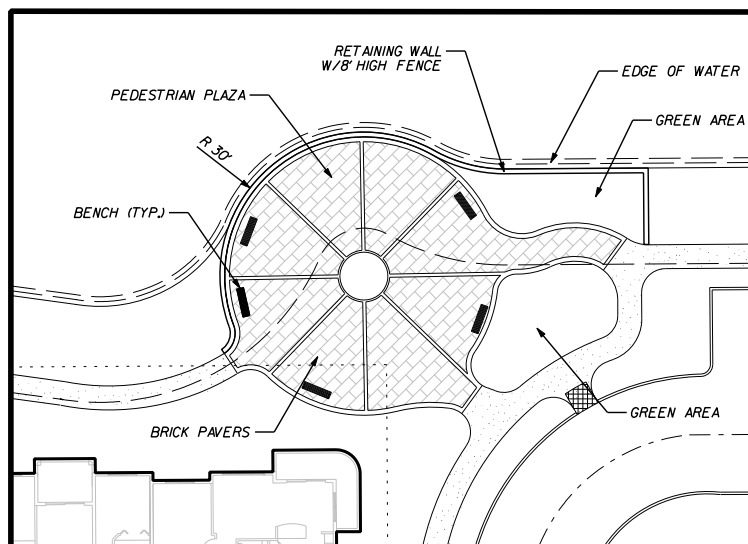
**MAIN RESIDENTIAL ENTRANCE**

SCALE: 1"=20'



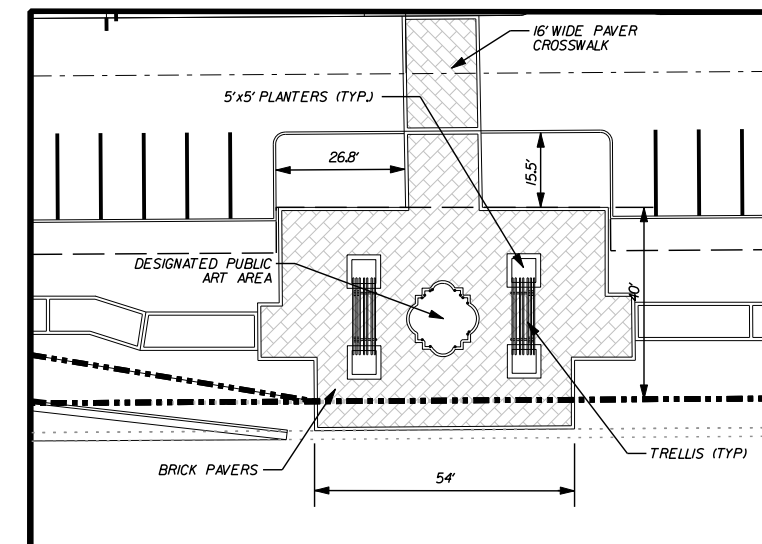
**TOT LOT & PLAYGROUND AREA**

SCALE: 1"=20'



**PEDESTRIAN PLAZA @ LAKE**

SCALE: 1"=20'



**PEDESTRIAN PLAZA @ WILES ROAD**

SCALE: 1"=20'

NO.	DATE	BY	REVISION
3	12/7/09	A.Q.	REVISED PER D.R.C. REVIEW COMMENTS
2	6/25/09	M.K.	UPDATED SITE PLAN & REVISED PER D.R.C. REVIEW COMMENTS
1	9/26/08	M.K.	REVISED PER D.R.C. REVIEW COMMENTS

Designed by: A.Q. Date: 6-08  
 Drawn by: G.H. Date: 6-08  
 Checked by: N.S. Date: 6-08

Approved by: ANTONIO QUEVEDO

Registered Engineer Number 59471 Date: 10/21/2010  
 State of Florida



**HSQ GROUP, INC.**  
 Consulting Engineers • Planners • Transportation  
 1489 West Palmetto Park Road, Suite 340  
 Boca Raton, Florida 33486 (561) 392-0221  
 Authorization Number 26258

**BEL LAGO**  
 SITE PLAN DETAILS

PROJECT NUMBER  
 0906-14  
 SHEET NUMBER  
 SP-5

10/21/2010 BEL LAGO DRAWINGS SITE PLAN 090614-SP05-TITLE.DGN