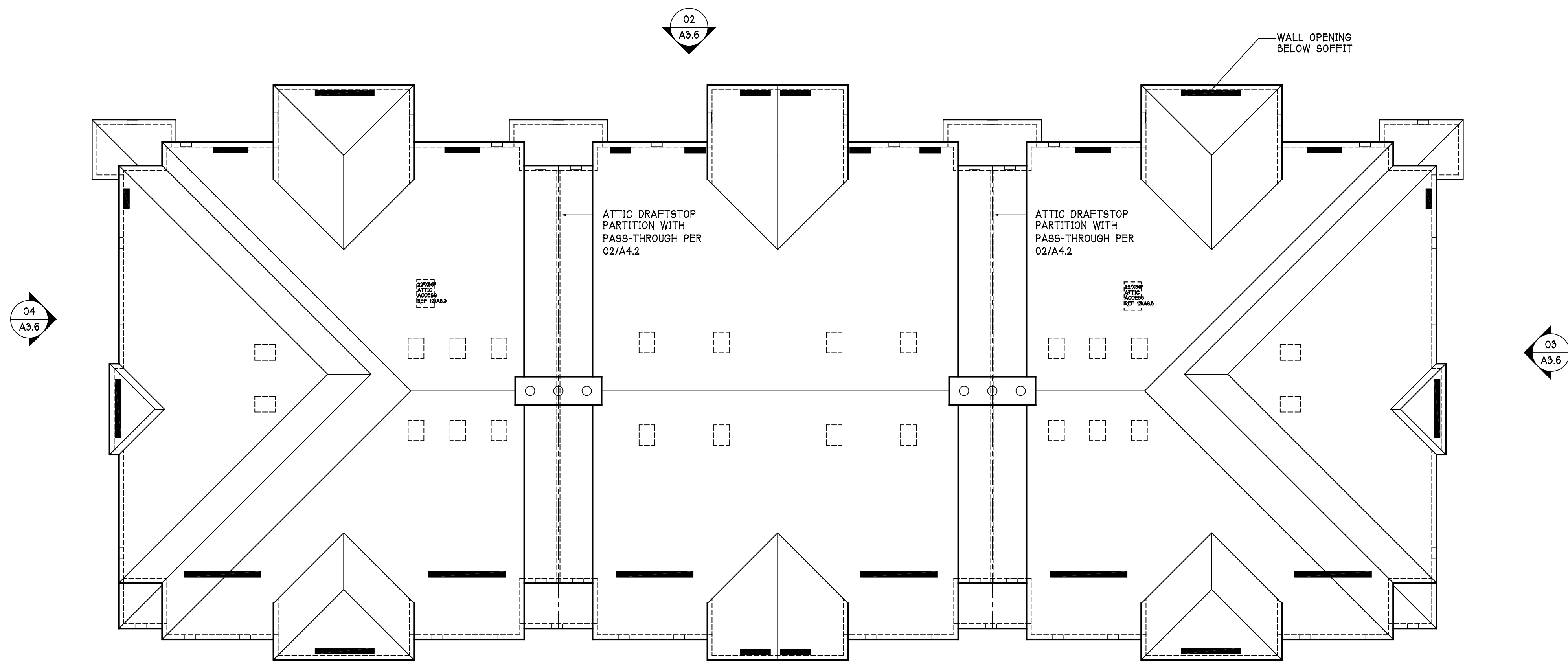


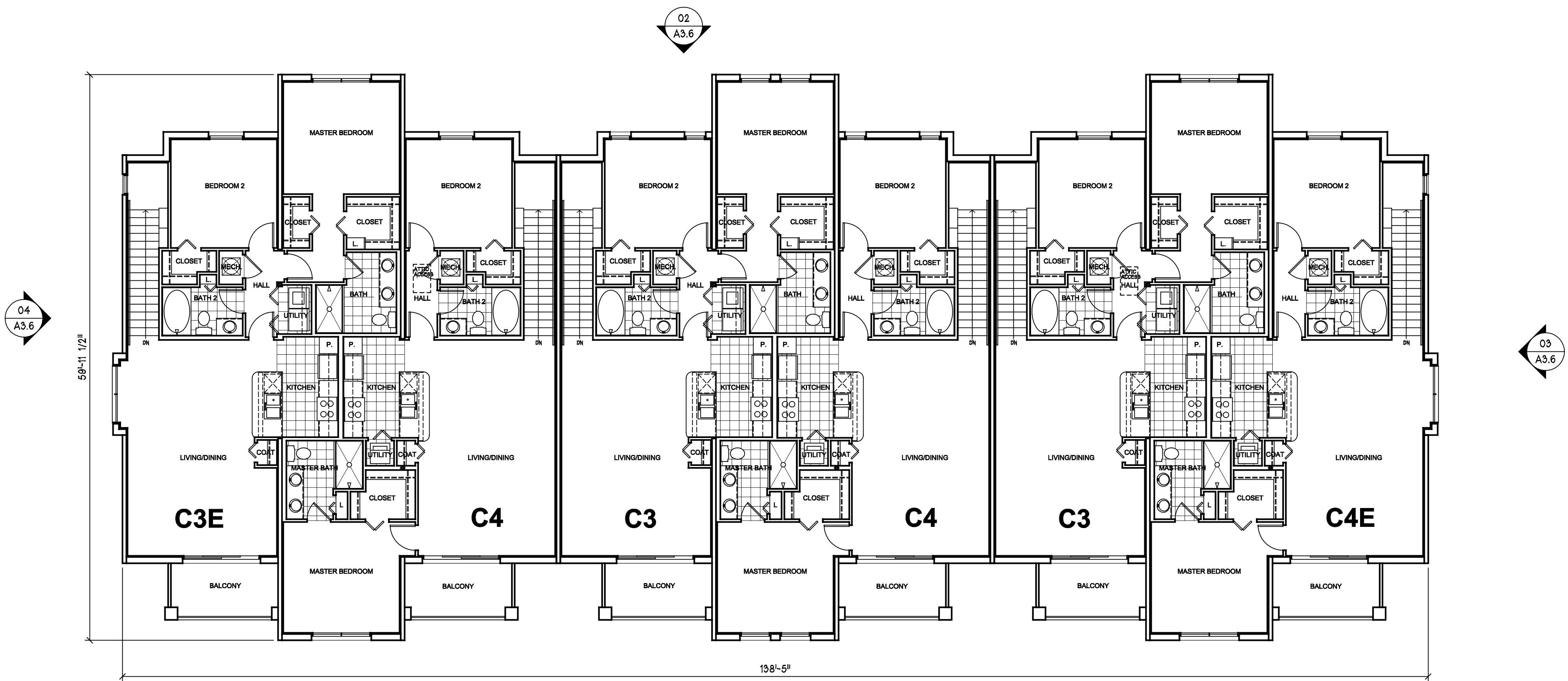
THIS ELECTRONIC DRAWING FILE IS RELEASED UNDER THE AUTHORITY OF STB ARCHITECTS AND PLANNERS INC. JERRY W. STEWART, PRINCIPAL, TEX. ARCH. REG. NO. 34692 ON JULY 31, 2004, WHO MAINTAINS THE ORIGINAL FILE. THIS ELECTRONIC FILE MAY BE USED AS A BACKGROUND DRAWING PURSUANT TO RULE 100.09 OF THE RULES AND EXAMINERS. NO PERSON MAY MAKE ANY MODIFICATIONS TO THIS ELECTRONIC DRAWING FILE WITHOUT THE ARCHITECT'S EXPRESSED WRITTEN PERMISSION. H:\0709\DD\A3-05



02 ROOF PLAN - BUILDING TYPE II (BUILDINGS NO. 1 & 8)
 1/8" = 1'-0"

VENT LEGEND

- *HAGAN® CLOAKED VENT TILE
 92 SQ. IN. NFVA MIN.
 (8 PER MODULE, MIN.)
- 5" x 14" SCREENED SOFFIT VENTS
 65 SQ. IN. NFVA MIN.
 (12 PER MODULE, MIN.)
 AS SHOWN ON ROOF PLAN.



01 THIRD FLOOR - BUILDING TYPE II (BUILDINGS NO. 1 & 8)
 1/8" = 1'-0"

NOT FOR CONSTRUCTION
 ©2008 STB Architects and Planners, Inc.
 Proprietary Designs of STB Architects and Planners, Inc.
 NOT TO BE COPIED, USED OR REPRODUCED
 WITHOUT WRITTEN PERMISSION.

STB
architects & planners, inc.
 8144 walnut hill lane · suite 460 lb 107 · dallas, tx 75231
 (214) 739-8080 fax (214) 739-8084

BEL LAGO - Coconut Creek, Florida
 Altman Development Corporation
CARRIAGE HOME
 C A P A R T M E N T S

revisions:

date: 09/19/08
 job no.: 0708

sheet number:
A3.5
 of