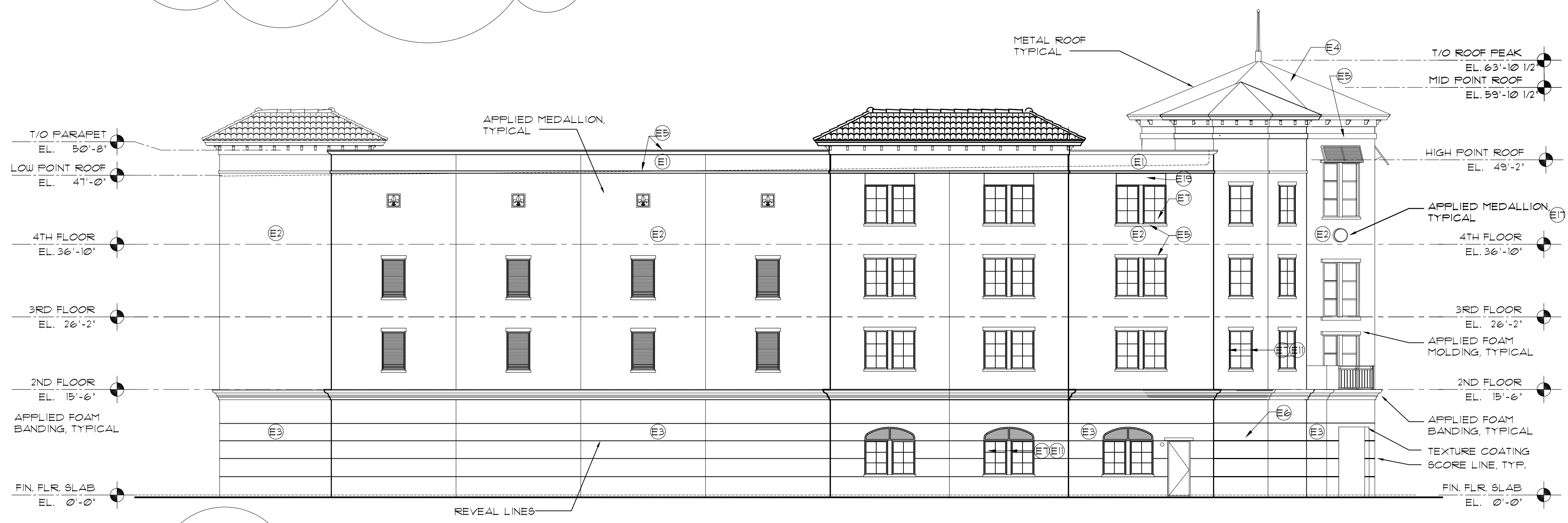


1 NORTH (REAR) ELEVATION
3/32'-1'-0"



2 WEST ELEVATION
3/32'-1'-0"

MARK	DESCRIPTION	PAINT SCHEDULE						NOTE:	COMMON COLOR NAMES:	MARK	DESCRIPTION	PAINT SCHEDULE						NOTE:	COMMON COLOR NAMES:
		MFR	CATALOG NO	COLOR	TYPE	FINISH	COATS					MFR	CATALOG NO	COLOR	TYPE	FINISH	COATS		
E1	PAINTED MEDIUM TEXTURE STUCCO FINISH	SHERWIN WILLIAMS	SW 6140	MODERATE WHITE	EXT. LATEX	FLAT	2	3 COATS SHERWIN WILLIAMS A-100 EXTERIOR LATEX SEMI GLOSS ON 2 COATS SHERWIN WILLIAMS A-100 LOXON MASONRY PRIMER	WHITE	E11	STOREFRONT GLAZING	YKK	-	BLACK	IMPACT	-	-	IMPACT RATED GLASS WITH STOREFRONT FRAME	BLACK
E2	PAINTED MEDIUM TEXTURE STUCCO FINISH	SHERWIN WILLIAMS	SW 6106	KILIM BEIGE	EXT. LATEX	FLAT	2	2 COATS SHERWIN WILLIAMS A-100 EXTERIOR LATEX SEMI GLOSS ON 2 COATS SHERWIN WILLIAMS A-100 LOXON MASONRY PRIMER	LIGHT BEIGE	E12	FABRIC AWNING	SUNBRELLA	-	-	-	-	-	-	-
E3	PAINTED MEDIUM TEXTURE STUCCO FINISH	SHERWIN WILLIAMS	SW 6066	SAND TRAP	EXT. LATEX	FLAT	2	2 COATS SHERWIN WILLIAMS A-100 EXTERIOR LATEX SEMI GLOSS ON 2 COATS SHERWIN WILLIAMS A-100 LOXON MASONRY PRIMER	BEIGE	E13	STOREFRONT GLAZING	YKK	1	TINTED	IMPACT	-	-	IMPACT RATED GLASS WITH STOREFRONT FRAME	-
E4	STANDING SEAM METAL ROOF	-	-	PATINA GREEN	PRE-FINISHED	FACTORY	-	-	GREEN	E14	ALUMINUM BAHAMA SHUTTER	-	-	-	-	-	-	-	-
E5	APPLIED FOAM BANDING	SHERWIN WILLIAMS	SW 6140	MODERATE WHITE	EXTERIOR LATEX	SEMI GLOSS	2	2 COATS SHERWIN WILLIAMS A-100 EXTERIOR LATEX FLAT ON 2 COATS SHERWIN WILLIAMS A-100 LOXON MASONRY PRIMER	WHITE	E15	RECESSED PANEL	-	-	-	-	-	-	-	-
E6	DECORATIVE LOUVER	-	-	PATINA GREEN	PRE-FINISHED	FACTORY	-	-	GREEN	E16	42" HIGH DECORATIVE RAILING	CUSTOM	-	MATCH PATINA GREEN	POWDER COAT	FACTORY	-	-	GREEN
E7	STOREFRONT FRAME	YKK	-	GREEN	ANODIZED	FACTORY	-	-	-	E17	PINEAPPLE GROVE MEDALLION	-	-	-	-	-	-	-	ROUND MEDALLION
E8	MAN DOOR 4 FRAMES	-	-	-	-	-	-	-	-	E18	PINEAPPLE GROVE MEDALLION	-	-	-	-	-	-	-	SQUARE MEDALLION
E9	PAINTED WOOD FASCIA AND TRIM	SHERWIN WILLIAMS	SW 6140	MODERATE WHITE	-	SATIN	2	2 COATS SHERWIN WILLIAMS A-100 EXTERIOR LATEX SATIN ON 1 COAT SHERWIN WILLIAMS A-100 EXTERIOR LATEX PRIMER	WHITE	E19	RECESSED PANEL	-	-	-	-	-	-	-	-
E10	PAINTED METAL DOOR, FRAME AND MISC.	SHERWIN WILLIAMS	SW 6066	SAND TRAP	POWDER COAT	FACTORY	-	-	LIGHT BEIGE	E20	6" TILE ROOF	-	-	-	-	-	-	-	-

3 EXTERIOR FINISH SCHEDULE
3/32'-1'-0"

SAFE AND SECURE
BELL LAGO WILLES ROAD
COCONUT CREEK, FLORIDA

KENNETH R. CARLSON - ARCHITECT, P.A.
1002 E. NEWPORT CENTER DR. SUITE 101
DEERFIELD BEACH, FLORIDA 33442
PH. (954) 421 - 8848
FAX (954) 421 - 9979
e-mail: krc@krcarlson.com

Revisions:
11/07/03 PER CLIENT REG.
08/05/04 PER CLIENT REG.
04/18/08 PER CLIENT REG.

DRAWN BY: JJB
CHECKED BY: KSC
DATE: 4/18/08
SCALE: NOTED
PROJECT #: 08071
CAD Dwg FILE: A5.0

AR 12546
KENNETH R. CARLSON

SHEET OF
A5.1
PAGE X OF