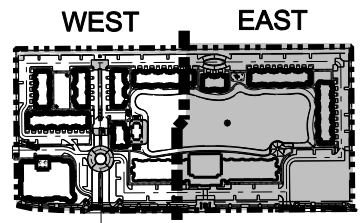


### DRAINAGE INLET SCHEDULE

- S-9 TYPE "C" INLET  
W/ U.S.F. 4155-6209  
FRAME & GRATE  
R.E. 14.00  
I.E. 10.00 E
- S-9A 4" DIA. MANHOLE W/ TOP  
SLAB & U.S.F. 580  
RING & COVER  
R.E. 14.50  
I.E. 5.73 N  
8.50 S (P.R.B.)
- S-9B 11" 0" ENDWALL  
FDOT INDEX 250  
CAP OF ENDWALL 11.58  
I.E. 8.33 N
- S-10 TYPE "D" INLET  
W/ U.S.F. 4155-6209  
FRAME & GRATE  
R.E. 14.00  
I.E. 10.00 N  
9.80 W  
5.73 S
- S-10A 12" SQUARE YARD DRAIN W/  
HINGED GRATE & 6" CONCRETE  
APRON  
R.E. 14.45  
I.E. 10.50 S
- S-11 4" DIA. MANHOLE W/ TOP  
SLAB & U.S.F. 580  
RING & COVER  
R.E. 14.50  
I.E. 5.73 N  
8.50 S (P.R.B.)
- S-12 11" 0" ENDWALL  
FDOT INDEX 250  
CAP OF ENDWALL 11.58  
I.E. 8.33 N
- S-13 TYPE "C" INLET  
W/ U.S.F. 4155-6209  
FRAME & GRATE  
R.E. 14.00  
I.E. 10.00 N  
10.00 S
- S-13A 12" SQUARE YARD DRAIN W/  
HINGED GRATE & 6" CONCRETE  
APRON  
R.E. 14.25  
I.E. 10.50 S
- S-14 TYPE "C" INLET  
W/ U.S.F. 4155-6209  
FRAME & GRATE  
R.E. 14.00  
I.E. 10.00 E  
9.46 W
- S-14A 12" SQUARE YARD DRAIN W/  
HINGED GRATE & 6" CONCRETE  
APRON  
R.E. 14.20  
I.E. 10.50 W
- S-15 4" DIA. MANHOLE W/ TOP  
SLAB & U.S.F. 580  
RING & COVER  
R.E. 15.45  
I.E. 9.50 N  
9.50 SW (P.R.B.)  
10.00 E
- S-16 11" 0" ENDWALL  
FDOT INDEX 250  
CAP OF ENDWALL 11.58  
I.E. 8.33 NE
- S-17 TYPE "C" INLET  
W/ U.S.F. 4155-6209  
FRAME & GRATE  
R.E. 14.00  
I.E. 10.00 E  
9.08 W (P.R.B.)
- S-17A 12" SQUARE YARD DRAIN W/  
HINGED GRATE & 6" CONCRETE  
APRON  
R.E. 14.20  
I.E. 10.37 W
- S-18 TYPE "C" INLET  
W/ U.S.F. 4155-6209  
FRAME & GRATE  
R.E. 14.00  
I.E. 10.00 E
- S-19 TYPE "D" INLET  
W/ U.S.F. 4155-6209  
FRAME & GRATE  
R.E. 14.00  
I.E. 9.50 W  
9.50 NE  
10.00 SW
- S-20 TYPE "D" INLET  
W/ U.S.F. 4155-6209  
FRAME & GRATE  
R.E. 14.00  
I.E. 9.90 E  
8.50 SW  
8.00 N
- S-21 15" 0" ENDWALL  
FDOT INDEX 250  
CAP OF ENDWALL 11.58  
I.E. 7.33 E

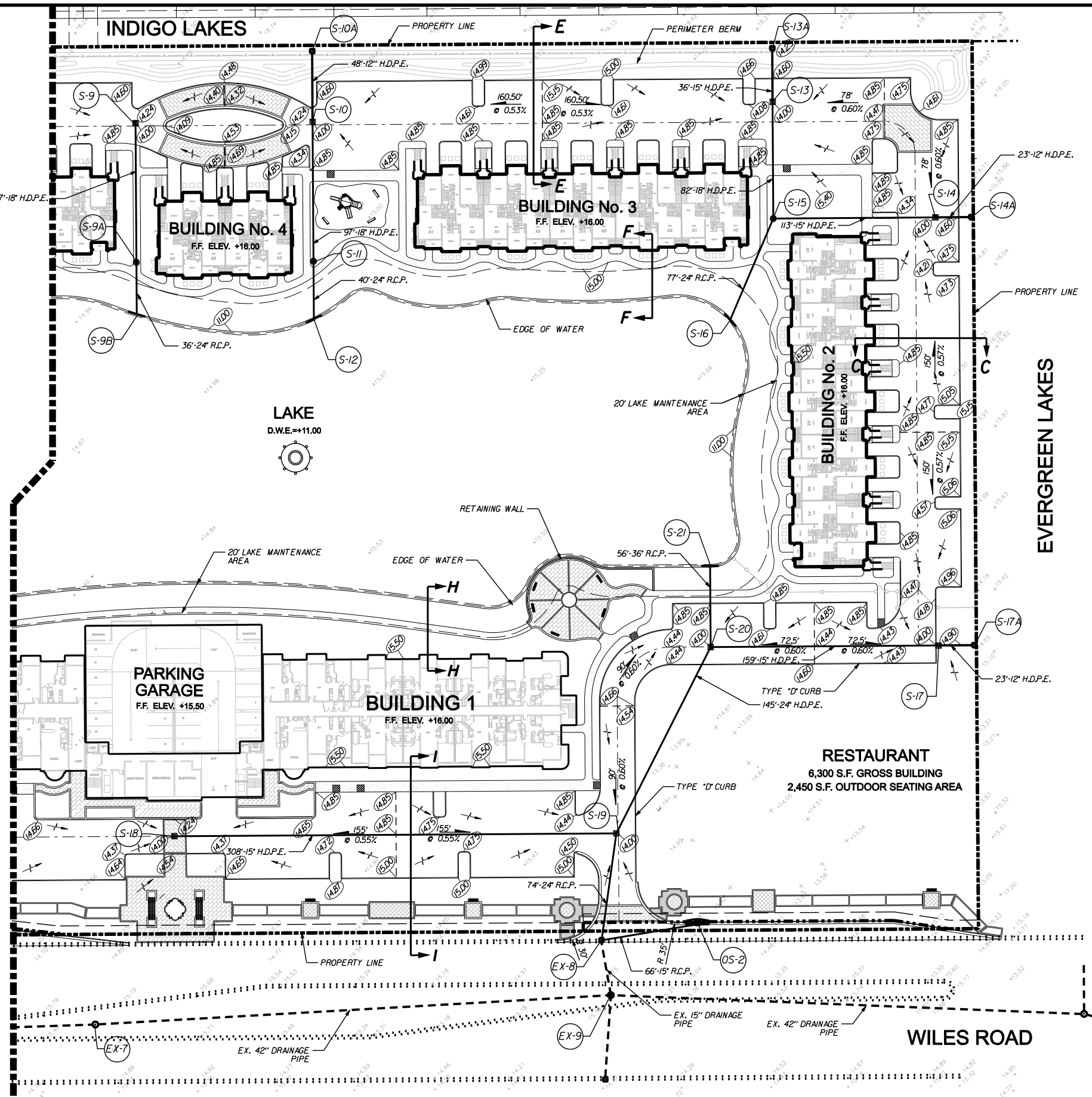
### LEGEND

- 100'-24" R.C.P. LENGTH - SIZE - MATERIAL
- PAVEMENT FLOW LINE
- PAVEMENT RIDGE LINE
- 0.60% PAVEMENT SLOPE & DIRECTION
- FLOW DIRECTION
- 15.00 PROPOSED GRADE
- 15.00 EXISTING GRADE
- F.F. +12.00 FINISHED FLOOR ELEVATION
- SEWER / DRAINAGE MANHOLE
- DRAINAGE INLET
- ▬ CURB INLET
- YARD DRAIN BASIN
- Y DOUBLE SEWER SERVICE
- SINGLE SEWER SERVICE
- ⊕ FIRE HYDRANT
- ⊕ TAPPING SLEEVE & VALVE
- ⊕ DOUBLE WATER METER
- ⊕ SINGLE WATER METER
- ⊕ GATE VALVE
- ⊕ EXISTING VALVE
- ⊕ EXISTING FIRE HYDRANT
- ⊕ BACTERIOLOGICAL SAMPLING POINT
- R.C.P. REINFORCED CONCRETE PIPE
- H.D.P.E. HIGH DENSITY POLYETHYLENE PIPE
- C.A.P. CORRUGATED ALUMINUM PIPE
- W.M. WATER MAIN
- GV. GATE VALVE
- F.H. FIRE HYDRANT
- R.E. RIM ELEVATION
- I.E. INVERT ELEVATION
- E.O.P. EDGE OF PAVEMENT
- P.R.B. POLLUTION RETARDANT BAFFLE
- D.W.E. DESIGN WATER ELEVATION



KEY MAP

MATCH LINE - SEE SHEET 2



**48 HOURS BEFORE DIGGING**  
 BROWARD - PALM BEACH - INDIAN RIVER  
 ST. LUCIE - MARTIN COUNTIES  
**CALL TOLL FREE 1-800-432-4770**  
 SUNSHINE STATE CALL UNDERGROUND UTILITIES NOTIFICATION CENTER

NO.	DATE	BY	REVISION
5	5/27/10	M.K.	REVISED PER D.R.C. REVIEW COMMENTS
4	12/7/09	M.K.	REVISED PER D.R.C. REVIEW COMMENTS
3	6/25/09	M.K.	UPDATED SITE PLAN & REVISED PER D.R.C. REVIEW COMMENTS
2	9/26/08	M.K.	REVISED PER D.R.C. REVIEW COMMENTS
1	6/25/08	G.H.	REVISED PER D.R.C. REVIEW COMMENTS

Designed by: A.Q. Date: 4/08  
 Drawn by: G.H. Date: 4/08  
 Checked by: N.S. Date: 4/08

Approved by: ANTONIO QUEVEDO  
 Registered Engineer Number 59471 Date: 10/21/2010  
 State of Florida

**HSQ GROUP, INC.**  
 Consulting Engineers • Planners • Transportation  
 1489 West Palmetto Park Road, Suite 340  
 Boca Raton, Florida 33486 (561) 392-0221  
 Authorization Number 26258

**BEL LAGO**  
**PAVING AND DRAINAGE PLAN - EAST**

PROJECT NUMBER	0906-14
SHEET NUMBER	3 of 18

21-PROJECT 15 22009 0906-14 BEL LAGO DRAWINGS CONSTRUCTION PLANS 090614-PP001-EAST.DGN 10/21/2010