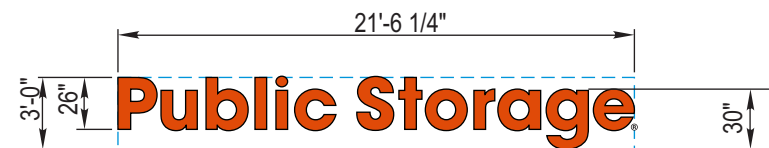
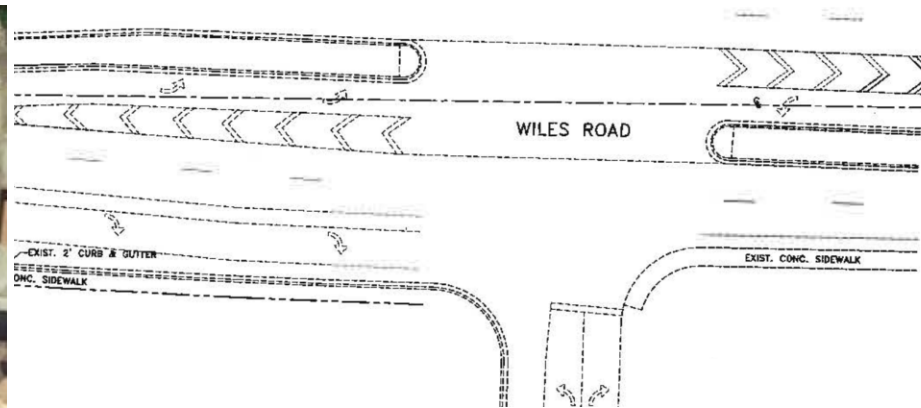


'1' CHANNEL LETTERS - LED ILLUM.
SCALE: 1/8" = 1'-0"
AREA: 97.5 SF



'2' CUSTOM REV CHANNEL LETTERS - NON-ILLUM'D
SCALE: 1/8" = 1'-0"
AREA: 64.4 SF



UPDATED PER CITY OF COCONUT CREEK DRC COMMENTS DATED 02/23/15

It is the intent and purpose of this color rendering to provide a basic color representation of your sign finish and color. However, digital media and printed colors will vary from actual paint finish and color. Existing painted surfaces will have a perceptible difference in shade and sheen from your sign finish. Providing a sample of the paint you wish to match or a Matthews paint color formula will minimize the differences.

16265 Star Road Nampa, ID 83687 toll free: 800.592.8058 tele: 208.345.4020 fax: 208.336.9886 www.imagenational.com



PROJECT TITLE:



LOCATION:

5479 Wiles Ave.
Coconut Creek, FL

DATE:

08.12.2014

DRAWN BY:

MLP

S.O.:

COMPUTER FILE:
PBS-COCONUT CREEK R7 021915-C

ACCOUNT EXEC.

L. Rodriguez

REVISION:

R7 021915 MLP

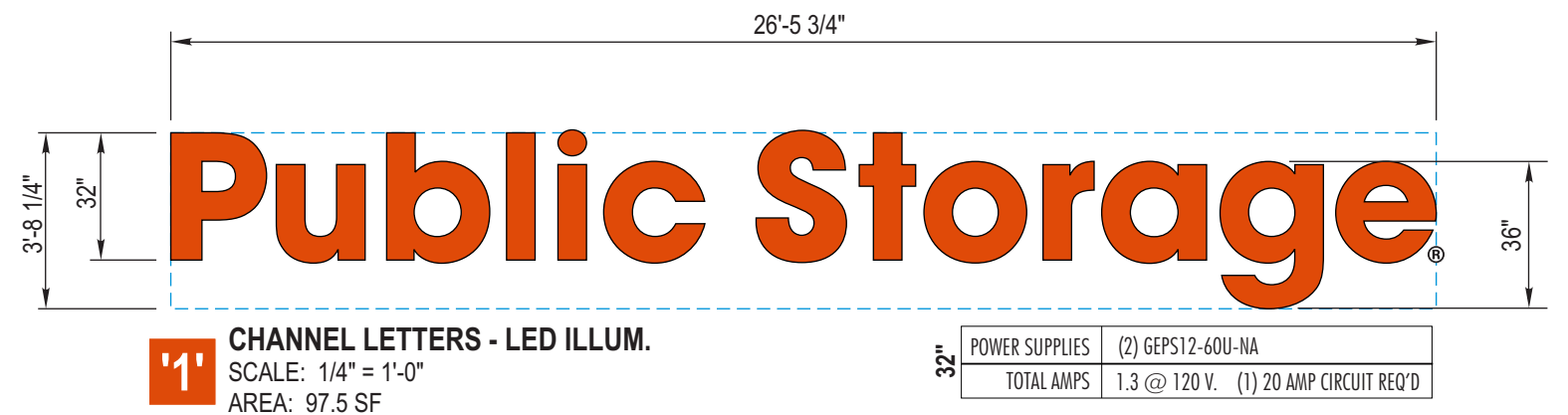
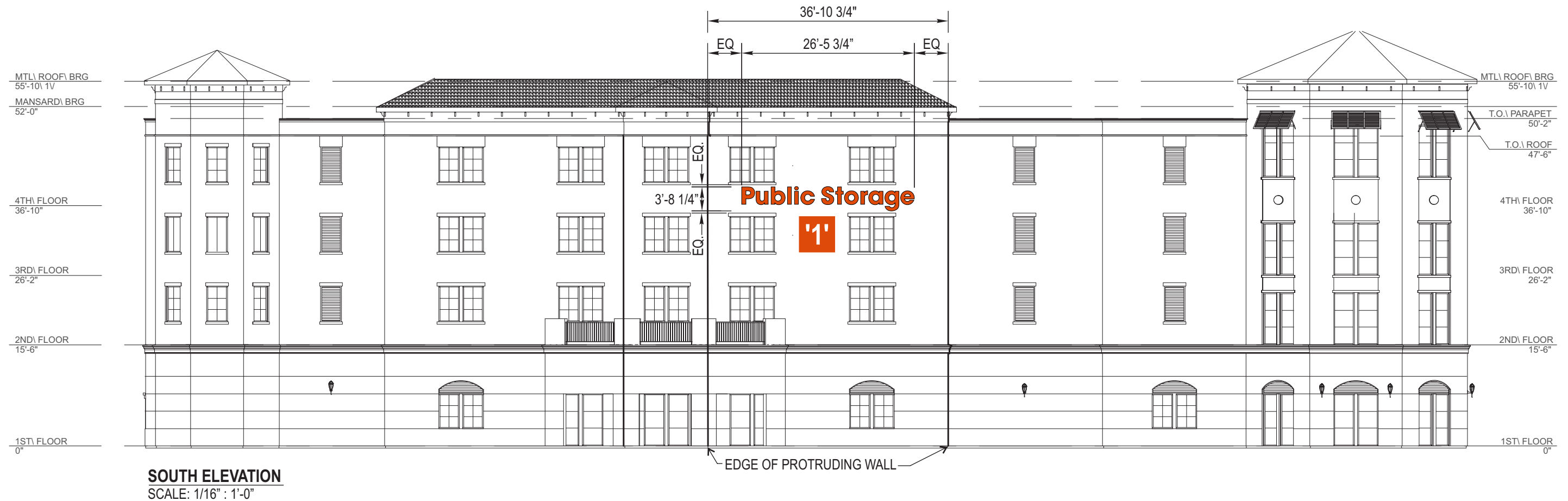


NAMPA PLANT -
UL #433195-001

U.S. & PR. - All signs conform to UL-48/2161 (labeled accordingly) & must comply with UL-411 install procedures. Canada - all signs must be CAS compliant. This sign is intended to be installed in accordance with the requirements of Article 600 of the National Electrical Code and/or applicable local codes. This includes proper grounding and bonding of the sign.

page #

1 of 5



CUSTOM: ALL WIRING MUST BE AT THE TOP OF THE LETTERS

It is the intent and purpose of this color rendering to provide a basic color representation of your sign finish and color. However, digital media and printed colors will vary from actual paint finish and color. Existing painted surfaces will have a perceptible difference in shade and sheen from your sign finish. Providing a sample of the paint you wish to match or a Matthews paint color formula will minimize the differences.

16265 Star Road Nampa, ID 83687 toll free: 800.592.8058 tele: 208.345.4020 fax: 208.336.9886 www.imagenational.com



PROJECT TITLE:



LOCATION:

5479 Wiles Ave.
Coconut Creek, FL

DATE:

08.12.2014

DRAWN BY:

MLP

S.O.:

COMPUTER FILE:

PBS-COCONUT CREEK R7 021915-C

ACCOUNT EXEC.

L. Rodriguez

REVISION:

R7 021915 MLP

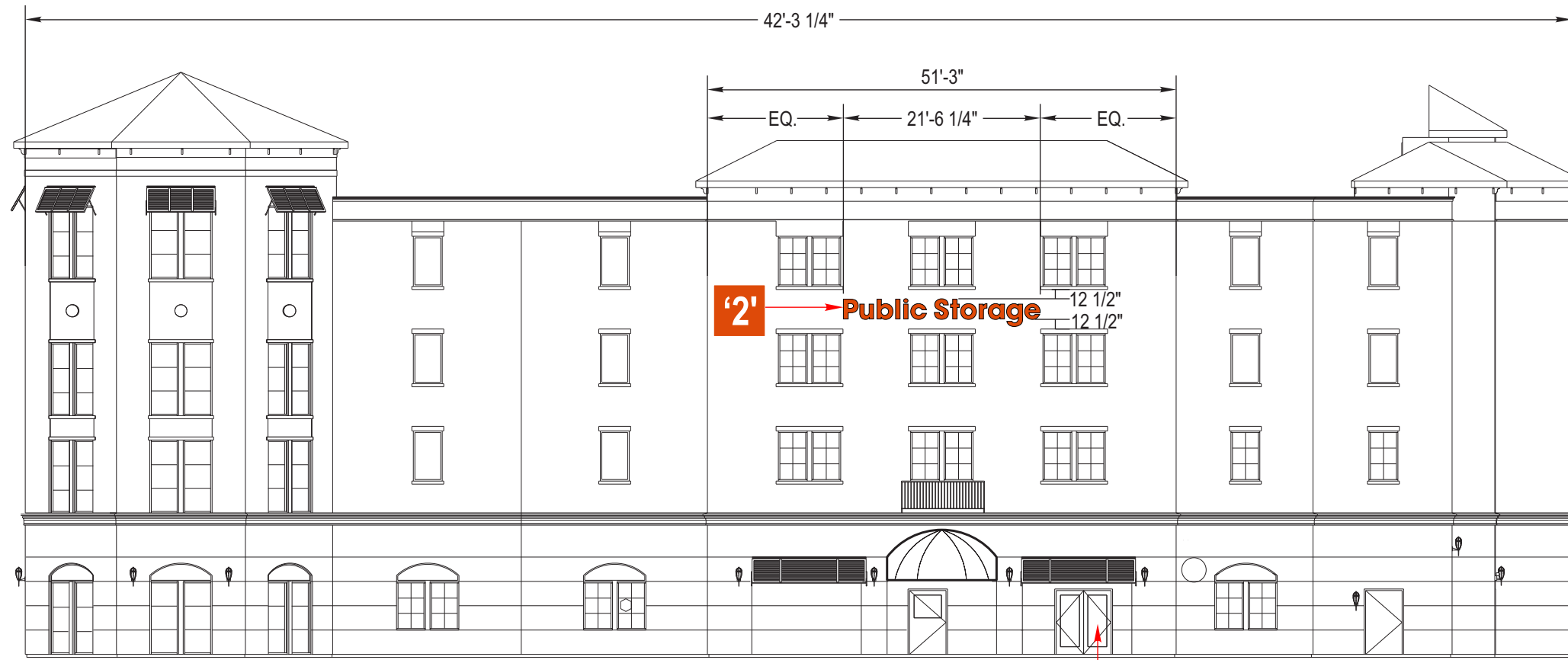


NAMPA PLANT -
UL #433195-001

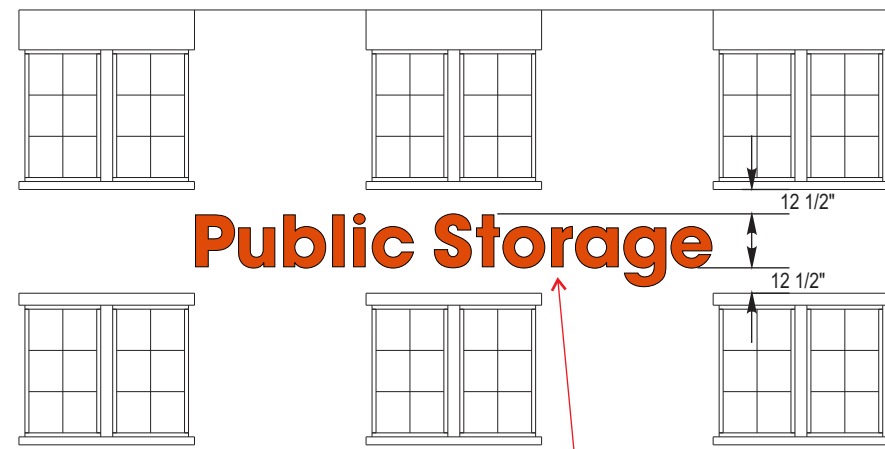
U.S. & PR. - All signs conform to UL-48/2161 (labeled accordingly) & must comply with UL-411 install procedures. Canada - all signs must be CAS compliant. This sign is intended to be installed in accordance with the requirements of Article 600 of the National Electrical Code and/or applicable local codes. This includes proper grounding and bonding of the sign.

page #

2 of 5



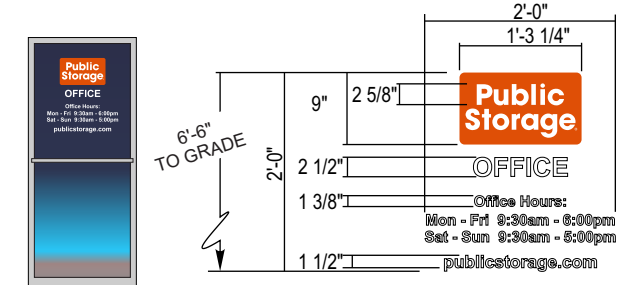
EAST ELEVATION
SCALE: 1/16" : 1'-0"



ENLARGED ELEVATION
SCALE: 1/8" : 1'-0"
CENTER SIGN ON WALL



'2' CUSTOM REV CHANNEL LETTERS - NON-ILLUM'D
SCALE: 1/4" = 1'-0"
AREA: 64.4 SF
CUSTOM FEATURE: NON-ILLUM'D



VINYL SCHEDULE	
COLOR	
3M VINYL 3632-3126 ORANGE	
3M VINYL OPAQUE WHITE 7725-10	

'3' 1ST SURFACE DOOR VINYL
SCALE: 1/2" = 1'-0"

It is the intent and purpose of this color rendering to provide a basic color representation of your sign finish and color. However, digital media and printed colors will vary from actual paint finish and color. Existing painted surfaces will have a perceptible difference in shade and sheen from your sign finish. Providing a sample of the paint you wish to match or a Matthews paint color formula will minimize the differences.

16265 Star Road Nampa, ID 83687 toll free: 800.592.8058 tele: 208.345.4020 fax: 208.336.9886 www.imagenational.com



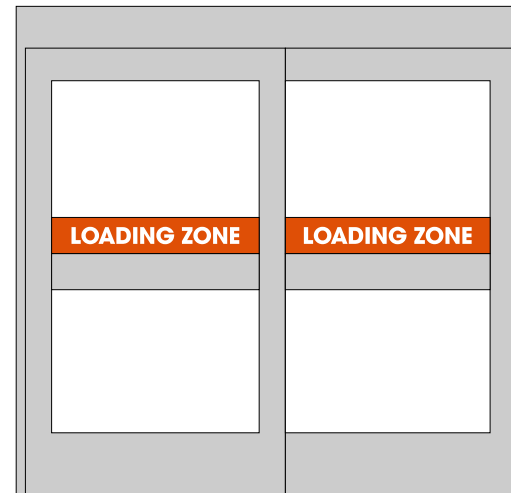
PROJECT TITLE: LOCATION:
5479 Wiles Ave.
Coconut Creek, FL

DATE: 08.12.2014
S.O.:
ACCOUNT EXEC. L. Rodriguez

DRAWN BY: MLP
COMPUTER FILE: PBS-COCONUT CREEK R7 021915-C
REVISION: R7 021915 MLP

UL UNDERWRITERS LABORATORIES ELECTRIC SIGN NAMPA PLANT - UL #433195-001
U.S. & PR. - All signs conform to UL-48/2161 (labeled accordingly) & must comply with UL-41J install procedures. Canada - all signs must be CAS compliant. This sign is intended to be installed in accordance with the requirements of Article 600 of the National Electrical Code and/or applicable local codes. This includes proper grounding and bonding of the sign.

page #
3 of 5



NOTE: TYPICAL LOADING ZONE VINYL PLACEMENT



'4' 1ST SURFACE DOOR VINYL
SCALE: 1" = 1'-0"

NOTE: VERIFY SIZE W/ SURVEY

VINYL SCHEDULE	
COLOR	
	3M VINYL 3632-3126 ORANGE
	3M VINYL OPAQUE WHITE 7725-10

It is the intent and purpose of this color rendering to provide a basic color representation of your sign finish and color. However, digital media and printed colors will vary from actual paint finish and color. Existing painted surfaces will have a perceptible difference in shade and sheen from your sign finish. Providing a sample of the paint you wish to match or a Matthews paint color formula will minimize the differences.

16265 Star Road Nampa, ID 83687 toll free: 800.592.8058 tele: 208.345.4020 fax: 208.336.9886 www.imagenational.com



PROJECT TITLE:



LOCATION:

5479 Wiles Ave.
Coconut Creek, FL

DATE:

08.12.2014

DRAWN BY:

MLP

S.D.:

COMPUTER FILE:

PBS-COCONUT CREEK R7 021915-C

ACCOUNT EXEC.

L. Rodriguez

REVISION:

R7 021915 MLP



NAMPA PLANT -
UL #433195-001

U.S. & PR. - All signs conform to UL-48/2161 (labeled accordingly) & must comply with UL-41J install procedures. Canada - all signs must be CAS compliant. This sign(s) is intended to be installed in accordance with the requirements of Article 600 of the National Electrical Code and/or applicable local codes. This includes proper grounding and bonding of the sign.

page #

4 of 5

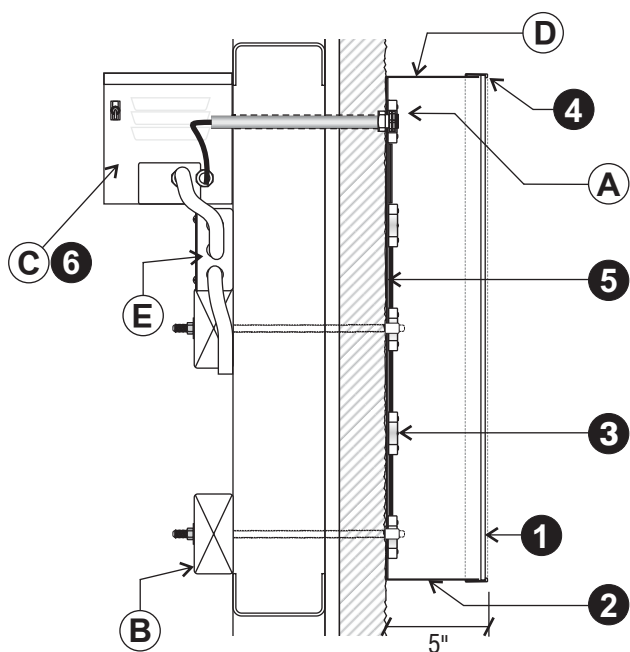


'1' CHANNEL LETTERS - LED ILLUM.
 SCALE: 3/16" = 1'-0"
 AREA: 97.5 SF

POWER SUPPLIES	(2) GEPS12-60U-NA
TOTAL AMPS	1.3 @ 120 V. (1) 20 AMP CIRCUIT REQ'D



CUSTOM: ALL WIRING MUST BE AT THE TOP OF THE LETTERS



TYPICAL SECTION DETAIL
NOT TO SCALE

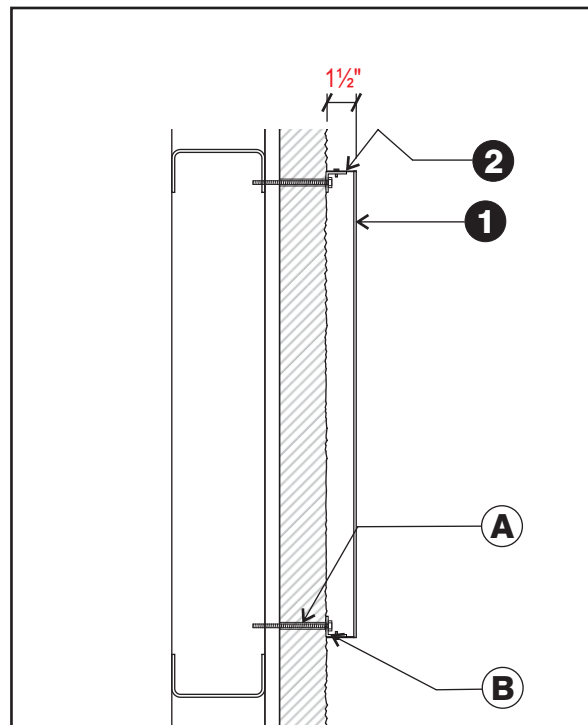
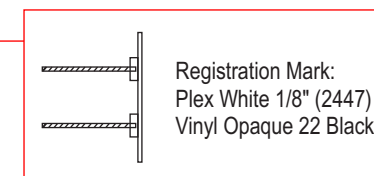
1 LETTER FACE: MATERIAL: 3/16" 2447 WHITE ACRYLIC WITH FIRST SURFACE ORANGE VINYL TO MATCH 3M 3630-3126 ORANGE	2 RETURNS: MATERIAL: 5" .040 ALUMINUM COLOR: BLACK
3 ILLUMINATION: MATERIAL: GE L.E.D. ILLUMINATION COLOR: WHITE	4 TRIM CAP: MATERIAL: 1" JEWELITE COLOR: BLACK
5 BACKS: MATERIAL: PRE-PAINTED .063 ALUM. COLOR: WHITE	6 ELECTRICAL: REMOTE. T.B.D. AMPS @ 120 V.

APPROVED FASTENER SCHEDULE		
	3/8" - 1/2" LAG SCREW	FOR USE WITH WOOD OR EIFS WALL SYSTEMS. 1 1/2" MIN PENETRATION (EXCLUDING TIP)
	1/4" - 3/8" THREADED ROD	FOR USE WITH WOOD, CONCRETE BLOCK OR EIFS WALL SYSTEMS

- I N S T A L L**
- A. 1/4" Rivet Nut Inserts in Back of Letter for Non-Corrosive Securement Using Appropriate Mounting Hardware
 - B. Blocking as Required per Location
 - C. Disconnect Switch at Transformer Can
 - D. 1/4" Drain Holes as Required
 - E. 20 amp 120 V. Circuits Required (Supplied by Others Than Image National)



'2' CUSTOM REV CHANNEL LETTERS - NON-ILLUM'D
 SCALE: 1/4" = 1'-0"
 AREA: 64.4 SF
CUSTOM FEATURE: NON-ILLUM'D



TYPICAL SECTION DETAIL
NOT TO SCALE

PARTS LIST:

ITEM #	DESCRIPTION
1	Alum .125 Mill 5' x 10' (FACES)
2	Alum Coil - painted to match faces (RETURNS)

INSTALL LIST:

ITEM #	DESCRIPTION
A.	Non-Corrosive Securement Lag bolt or Lag & Shield Attachment (or appropriate mounting hardware)
B.	1" Wall Mounted Alum. Clip - Screw Attachment to Letter

APPROVED FASTENER SCHEDULE		
	3/8" - 1/2" LAG SCREW	FOR USE WITH WOOD OR EIFS WALL SYSTEMS. 1 1/2" MIN PENETRATION (EXCLUDING TIP)
	1/4" - 3/8" THREADED ROD	FOR USE WITH WOOD, CONCRETE BLOCK OR EIFS WALL SYSTEMS

It is the intent and purpose of this color rendering to provide a basic color representation of your sign finish and color. However, digital media and printed colors will vary from actual paint finish and color. Existing painted surfaces will have a perceptible difference in shade and sheen from your sign finish. Providing a sample of the paint you wish to match or a Matthews paint color formula will minimize the differences.

16265 Star Road Nampa, ID 83687 toll free: 800.592.8058 tele: 208.345.4020 fax: 208.336.9886 www.imagenational.com



PROJECT TITLE:



LOCATION:

5479 Wiles Ave.
Coconut Creek, FL

DATE:

08.12.2014

DRAWN BY:

MLP

S.D.:

COMPUTER FILE:

PBS-COCONUT CREEK R7 021915-C

ACCOUNT EXEC.

L. Rodriguez

REVISION:

R7 021915 MLP



NAMPA PLANT -
UL #433195-001

U.S. & PR. - All signs conform to UL-48/2161 (labeled accordingly) & must comply with UL-411 install procedures. Canada - all signs must be CAS compliant. This sign is intended to be installed in accordance with the requirements of Article 600 of the National Electrical Code and/or applicable local codes. This includes proper grounding and bonding of the sign.

page #

5 of 5