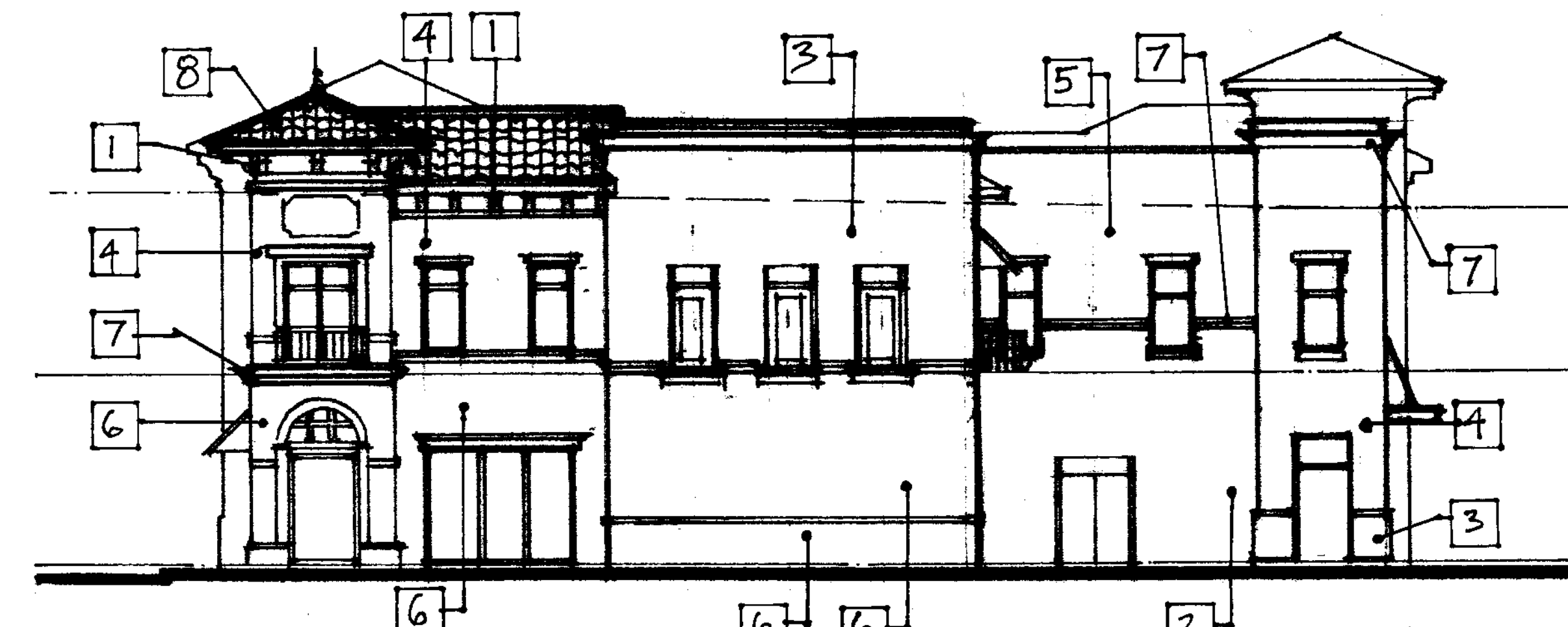


BUILDING B - NORTH ELEVATION

3/32" = 1'-0"

04091

JULY 22 05

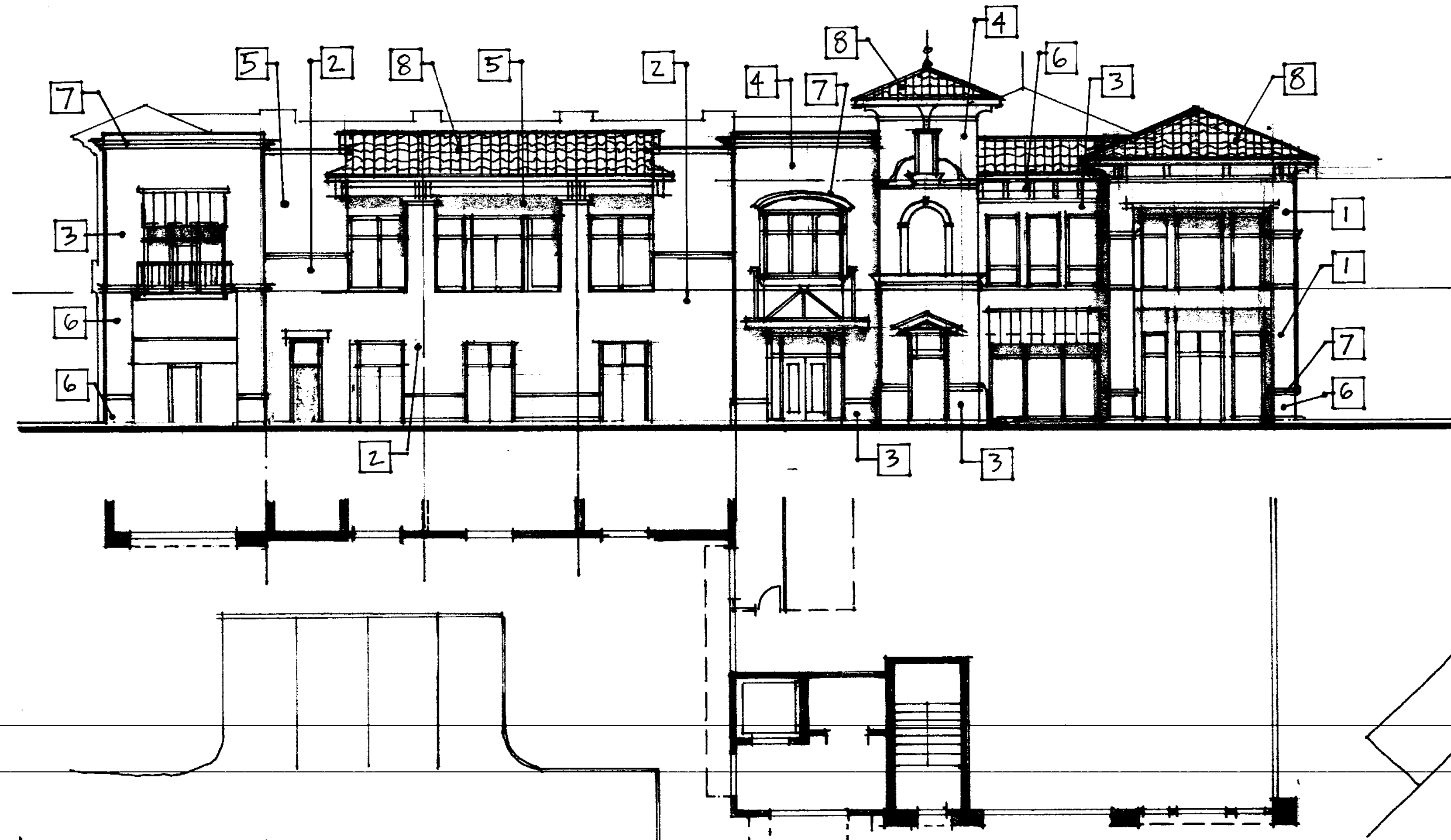


BUILDING B - WEST ELEVATION

3/32" = 1'-0"

04091

JULY 22 05



BUILDING B SOUTH ELEVATION

3/32" = 1'-0"

04091

JULY 22 05



BUILDING B - EAST ELEVATION

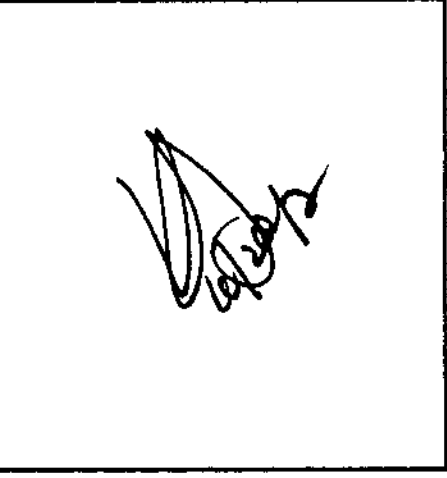
3/32" = 1'-0"

04091

JULY 22 05

MATERIAL LEGEND

	DESCRIPTION
1	STUCCO - PAINTED MUSLIN (SHERWIN WILLIAMS #0133)
	STUCCO - PAINTED EUCALYPTUS LEAF (SHERWIN WILLIAMS #2142)
2	STUCCO - PAINTED ARMAGNAC (SHERWIN WILLIAMS #0334)
3	STUCCO - PAINTED COL. REVIVAL GREEN (SHERWIN WILLIAMS #2520)
4	STUCCO - PAINTED NEW COL. YELLOW (SHERWIN WILLIAMS #2632)
	STUCCO - PAINTED SALAMI (SHERWIN WILLIAMS #0512)
5	STUCCO - PAINTED COMPATIBLE CREAM (SHERWIN WILLIAMS #0507)
6	STUCCO - PAINTED FAVORITE TAN (SHERWIN WILLIAMS #0137)
	STUCCO - PAINTED SUPERIOR BRONZE (SHERWIN WILLIAMS #0152)
	EPS - PAINTED "SLIPPY BLUE" (SHERWIN WILLIAMS #0225)
	EPS - PAINTED MUSLIN (SHERWIN WILLIAMS #0133)
	EPS - PAINTED UNIVERSAL KHAKI (SHERWIN WILLIAMS #0150)
7	EPS - PAINTED PURE WHITE (SHERWIN WILLIAMS #7705)
	EPS - PAINTED SUPERIOR BRONZE (SHERWIN WILLIAMS #0152)
	EPS - PAINTED SUPERIOR BRONZE (SHERWIN WILLIAMS #0152)
	CANVAS CANOPY BY SUNBRELLA PATTERNS 8017-000 ROYAL BLUE
	CANVAS CANOPY BY SUNBRELLA PATTERNS 8703-000 CRAMSON RED NATURAL 6 BAR
8	CAST CONCRETE TILE BY MONIER LIFE TILE "GRANDVINE BLEND" TBCC8144F



#	DATE	DESCRIPTION

Notes: Dimensions on these drawings shall take precedence over scaled dimensions. Contractor shall verify all dimensions and conditions on these drawings. Field verify all conditions prior to laying out or fabricating. All dimensions shall be as shown on these drawings. All work shall be done in accordance with the specifications and conditions shown on these drawings. All materials shall be of the highest quality and shall be subject to the approval of the architect. All work shall be done in accordance with the specifications and conditions shown on these drawings. All materials shall be of the highest quality and shall be subject to the approval of the architect. All work shall be done in accordance with the specifications and conditions shown on these drawings. All materials shall be of the highest quality and shall be subject to the approval of the architect.