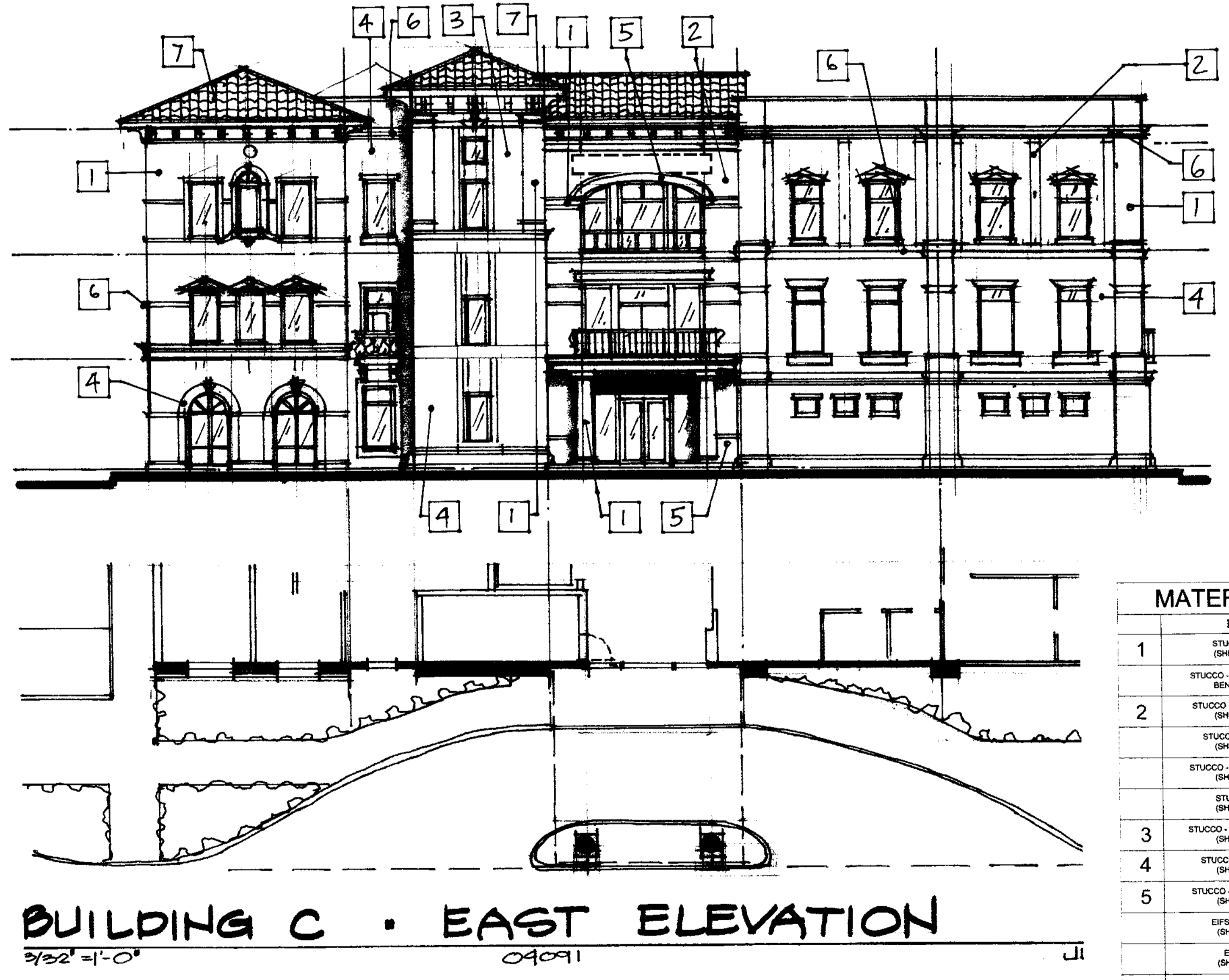
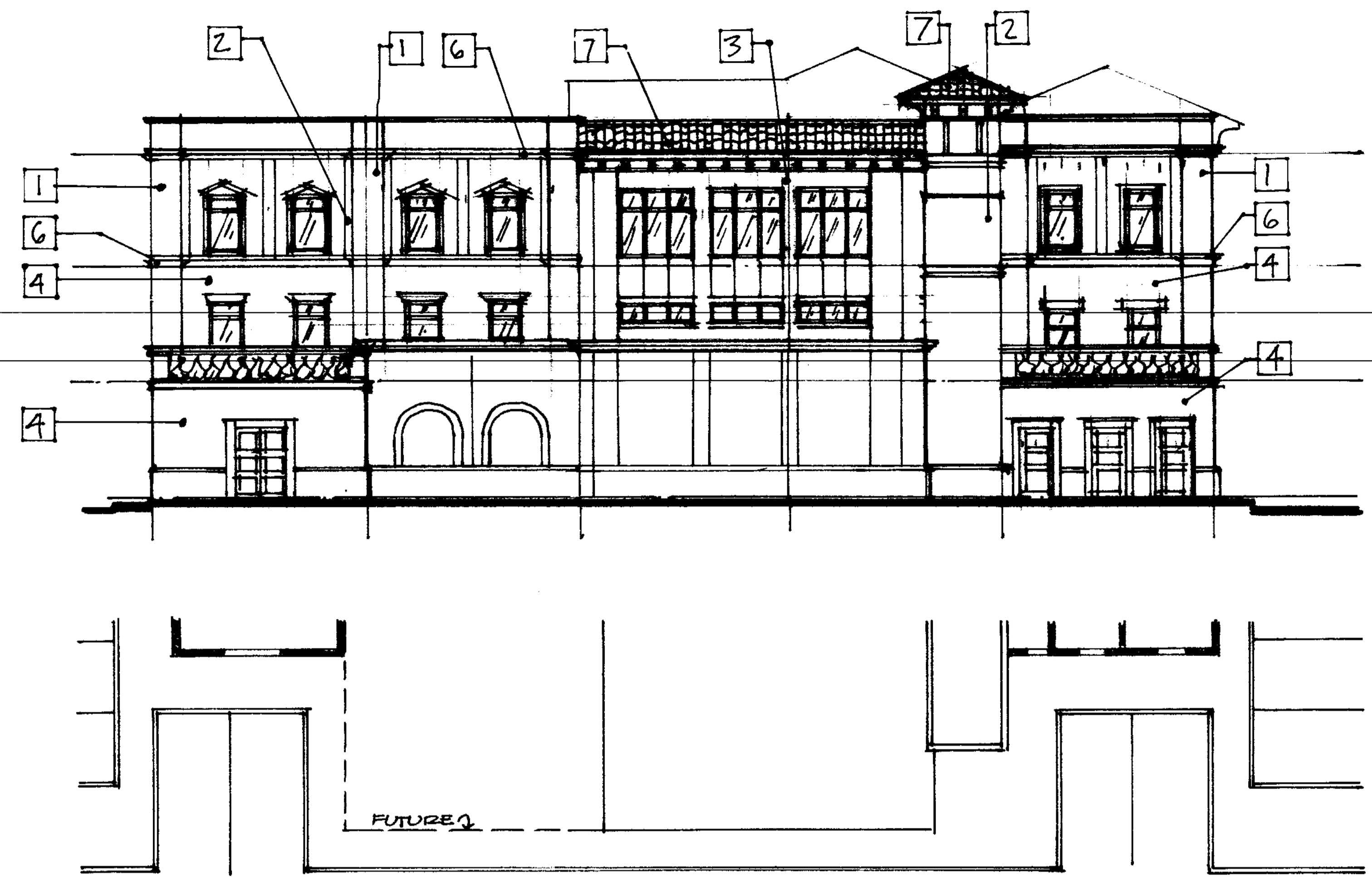
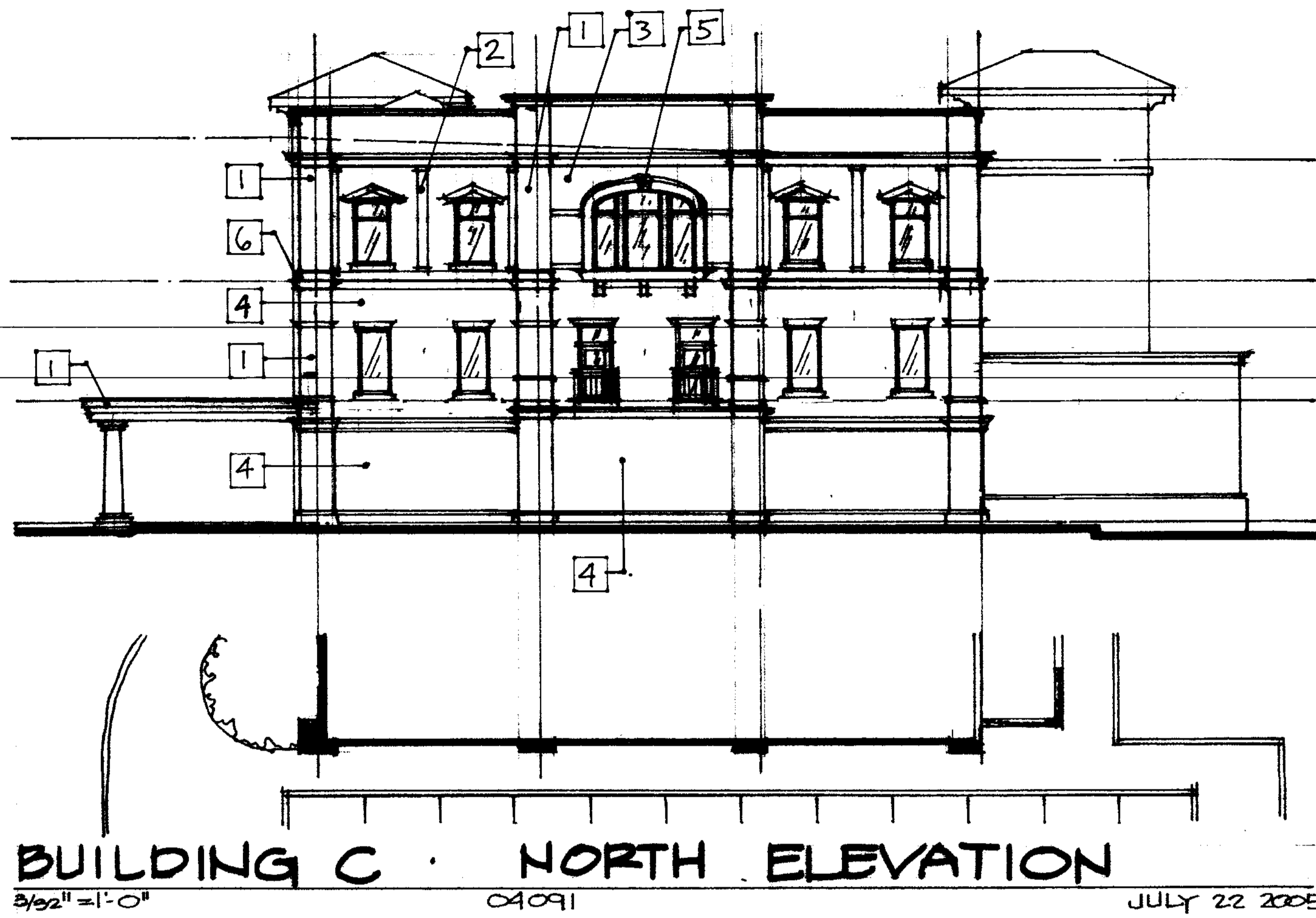


#	DATE	DESCRIPTION



MATERIAL LEGEND

DESCRIPTION
1 STUCCO - PAINTED MUDLIN (SHERWIN WILLIAMS #1133)
2 STUCCO - PAINTED 'EUCALYPTUS LEAF' (BENJAMIN MOORE #2144-20)
3 STUCCO - PAINTED 'NEW GOLD YELLOW' (SHERWIN WILLIAMS #1513)
4 STUCCO - PAINTED 'SALMY' (SHERWIN WILLIAMS #612)
5 STUCCO - PAINTED 'COMPATIBLE CREAM' (SHERWIN WILLIAMS #6387)
6 STUCCO - PAINTED 'FAVORITE TAN' (SHERWIN WILLIAMS #6152)
7 STUCCO - PAINTED 'SUPERIOR BRONZE' (SHERWIN WILLIAMS #6152)
EIFS - PAINTED 'SLEEPY BLUE' (SHERWIN WILLIAMS #625)
EIFS - PAINTED 'UNIVERSAL KUMFY' (SHERWIN WILLIAMS #6150)
EIFS - PAINTED 'PURE WHITE' (SHERWIN WILLIAMS #1000)
EIFS - PAINTED 'SUPERIOR BRONZE' (SHERWIN WILLIAMS #6152)
CANVAS CANOPY BY SUNBRELLA PATTERNS #611-0000 ROYAL BLUE
CANVAS CANOPY BY SUNBRELLA PATTERNS #103-0000 CRIMSON RED NATURAL 6 BAR
7 CAST CONCRETE TILE BY MONIER LIFE TILE 'BRANDYWINE BLEND' 18C926144F

All drawings are the property of Scott Architecture, Interiors, Graphics, Planning, Inc. and shall remain the property of the firm. No part of these drawings may be reproduced, stored in a retrieval system, or transmitted in any form or by any means, electronic, mechanical, photocopying, recording, or by any information storage and retrieval system, without the prior written permission of the firm. The firm shall not be held responsible for any errors or omissions in these drawings. The firm shall not be held responsible for any damage to property or injury to persons resulting from the use of these drawings. The firm shall not be held responsible for any damage to property or injury to persons resulting from the use of these drawings. The firm shall not be held responsible for any damage to property or injury to persons resulting from the use of these drawings.