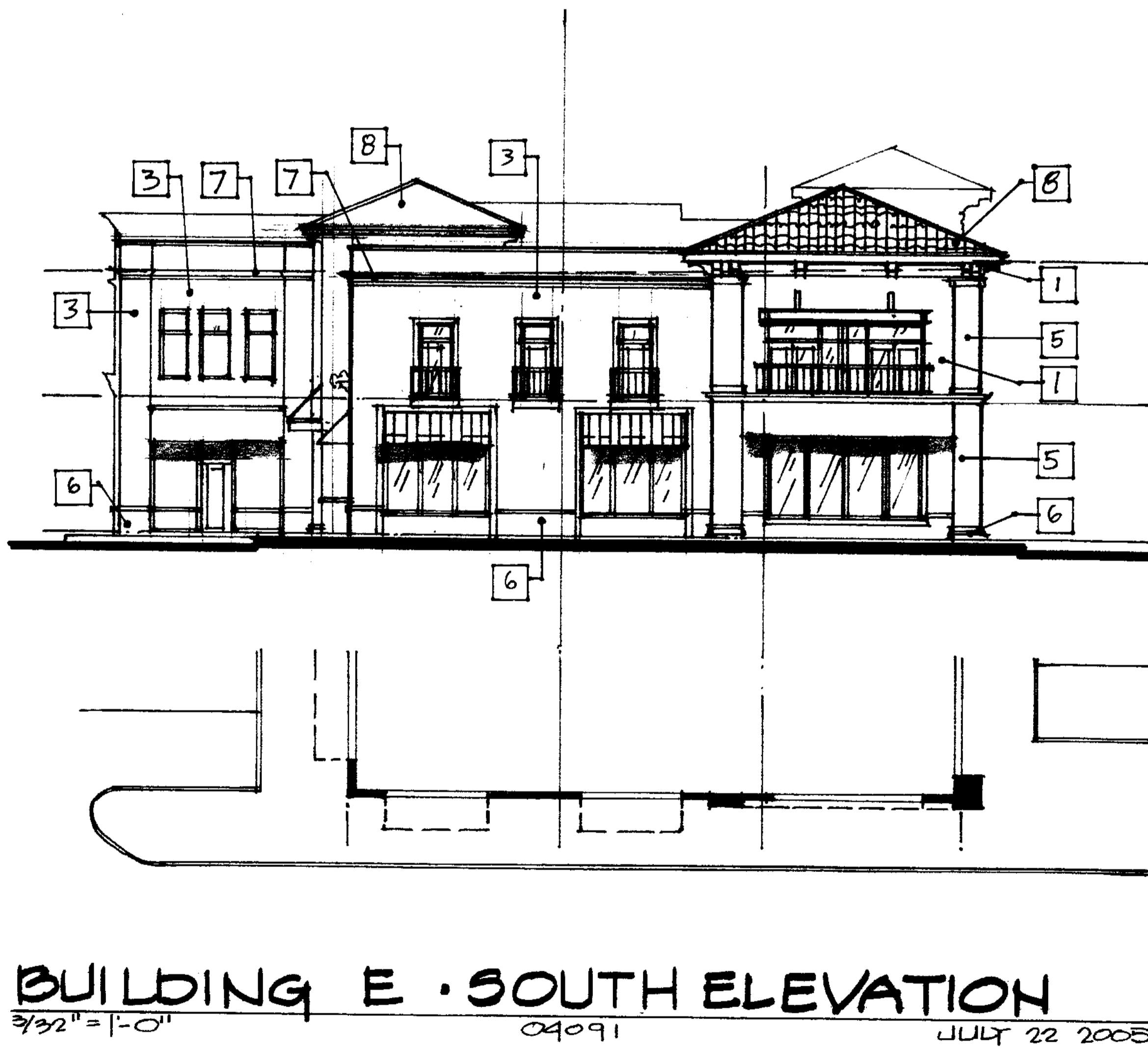


BUILDING E - NORTH ELEVATION
3/32" = 1'-0" 04091 JULY 22 2005



BUILDING E - WEST ELEVATION
3/32" = 1'-0" 04091 JULY 22 2005



BUILDING E - SOUTH ELEVATION
3/32" = 1'-0" 04091 JULY 22 2005



BUILDING E - EAST ELEVATION
3/32" = 1'-0" 04091 JULY 22 2005

| MATERIAL LEGEND | |
|--|--|
| DESCRIPTION | |
| 1 STUCCO - PAINTED MUSLIN (SHERWIN WILLIAMS #6133) STUCCO - PAINTED 'ACACYPUS LEAF' (SHERWIN WILLIAMS #14100) | |
| 2 STUCCO - PAINTED 'ARMAGNAC' (SHERWIN WILLIAMS #6344) | |
| 3 STUCCO - PAINTED 'NEW COTON YELLOW' (SHERWIN WILLIAMS #3262) | |
| 4 STUCCO - PAINTED 'SEVIVAL GREEN' (SHERWIN WILLIAMS #2826) STUCCO - PAINTED 'BALMY' (SHERWIN WILLIAMS #6912) STUCCO - PAINTED 'COMPATIBLE CREAM' (SHERWIN WILLIAMS #6197) | |
| 5 STUCCO - PAINTED 'FAVORITE TAN' (SHERWIN WILLIAMS #6157) | |
| 6 STUCCO - PAINTED 'SUPERIOR BRONZE' (SHERWIN WILLIAMS #6192) EPS - PAINTED 'SLEEPY BLUE' (SHERWIN WILLIAMS #6225) EPS - PAINTED 'MUSLIN' (SHERWIN WILLIAMS #6192) EPS - PAINTED 'UNIVERSAL WHITE' (SHERWIN WILLIAMS #6192) | |
| 7 EPS - PAINTED 'PURE WHITE' (SHERWIN WILLIAMS #7005) EPS - PAINTED 'SUPERIOR BRONZE' (SHERWIN WILLIAMS #6192) CANVAS CANOPY BY 'SUNBRELLA PATTERNS' 817-0000 ROYAL BLUE CANVAS CANOPY BY 'SUNBRELLA PATTERNS' 817-0000 CRIMSON RED NATURAL 8184H | |
| 8 CAST CONCRETE TILE BY 'MONIER LIFE TILE' 'CASA GRANDE BLEND' 183C36144F | |

REVISIONS:

| # | DATE | DESCRIPTION |
|---|------|-------------|
| | | |
| | | |
| | | |

DRAWN BY: MM

CHECKED BY: KD

DATE: 07-20-05

SHEET:

E

TSPA JOB No. 04046