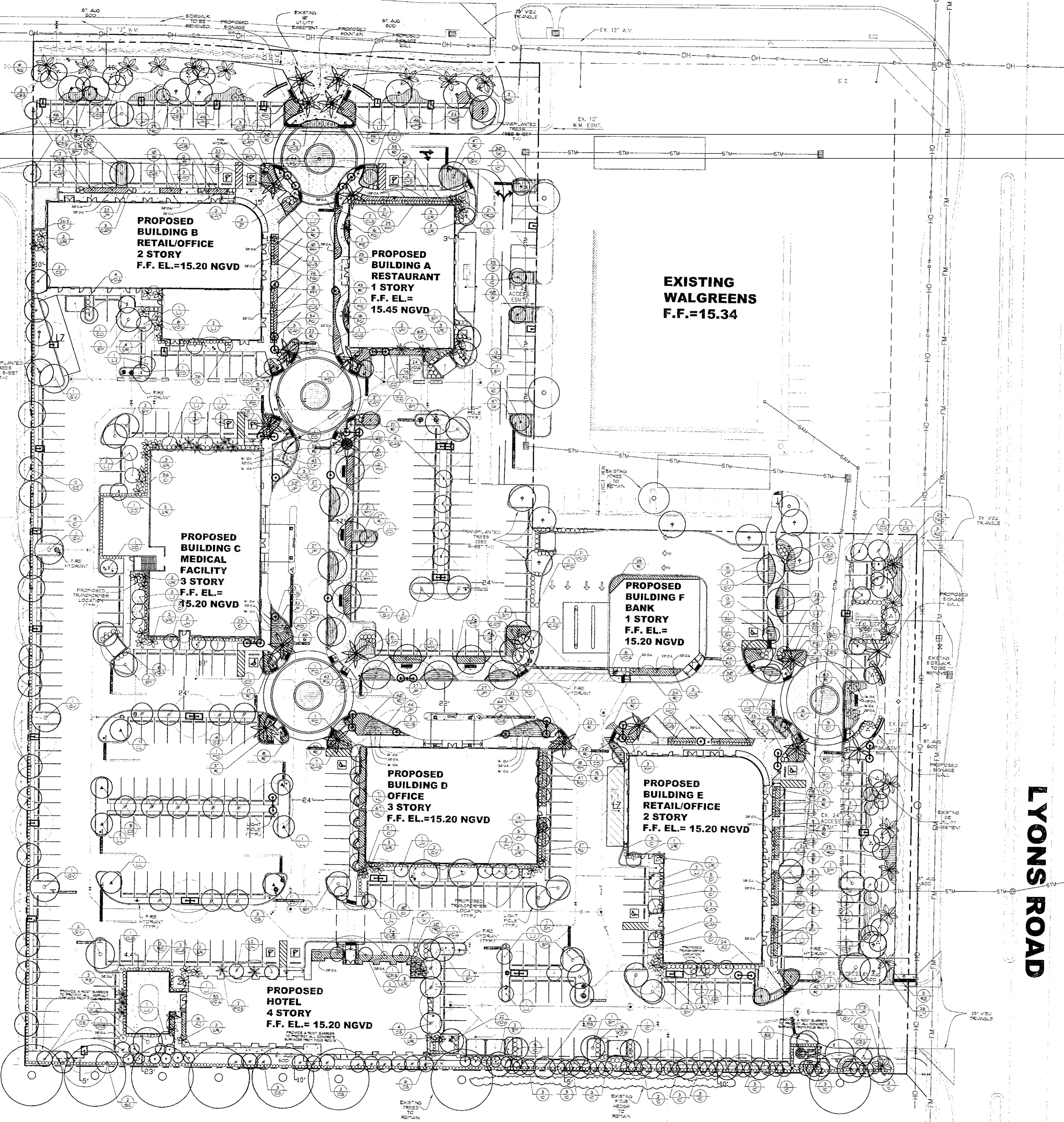


COCONUT CREEK PARKWAY



LAND DEVELOPMENT CODE ARTICLE III Subdivision IV

**DEVELOPMENT PARCEL 1
Sec.13-443 (7) (E)
Landscape between buildings and VUA**

BUILDING A (300 LF BUILDING FRONTAGE) 1 TREE/40 LF (10 TREES) 20 SHRUBS/40 LF 30 GROUND COVER/40 LF	5 TREES REQUIRED 175 SHRUBS PROVIDED 360 GROUND COVER REQUIRED
BUILDING B (480 LF BUILDING FRONTAGE) 1 TREE/40 LF (12 TREES) 20 SHRUBS/40 LF 30 GROUND COVER/40 LF	13 TREES REQUIRED 244 SHRUBS PROVIDED 360 GROUND COVER PROVIDED
BUILDING C (960 LF BUILDING FRONTAGE) 1 TREE/40 LF (24 TREES) 20 SHRUBS/40 LF 30 GROUND COVER/40 LF	13 TREES PROVIDED 244 SHRUBS PROVIDED 360 GROUND COVER PROVIDED
BUILDING D (480 LF BUILDING FRONTAGE) 1 TREE/40 LF (12 TREES) 20 SHRUBS/40 LF 30 GROUND COVER/40 LF	10 TREES PROVIDED 200 SHRUBS PROVIDED 300 GROUND COVER PROVIDED
BUILDING E (480 LF BUILDING FRONTAGE) 1 TREE/40 LF (12 TREES) 20 SHRUBS/40 LF 30 GROUND COVER/40 LF	10 TREES PROVIDED 200 SHRUBS PROVIDED 300 GROUND COVER PROVIDED
BUILDING F (264 LF BUILDING FRONTAGE) 1 TREE/40 LF (6.6 TREES) 20 SHRUBS/40 LF 30 GROUND COVER/40 LF	1 TREES PROVIDED 103 SHRUBS PROVIDED 284 GROUND COVER PROVIDED
PROPOSED HOTEL (444 LF BUILDING FRONTAGE) 1 TREE/40 LF (11 TREES) 20 SHRUBS/40 LF 30 GROUND COVER/40 LF	12 TREES PROVIDED 222 SHRUBS PROVIDED 360 GROUND COVER PROVIDED

**Sec.13-443 (12)
Vehicular Use Areas**

(A) 1 TREE PER 10 SPACES 40 SPACES PROVIDED	4 TREES REQUIRED 4 TREES PROVIDED
(B) 1 TREE PER 100 SF OF PAVED AREA 100,000 SF VUA 300 X 400 SPACES 100,000 SF - 10,000 SF 60,000 SF	8,000 SF LANDSCAPE REQUIRED 60,000 SF LANDSCAPE PROVIDED 600 SF TREE ATTACHMENT

**Sec.13-443 (4)
ON SITE TREES AND SHRUBS**

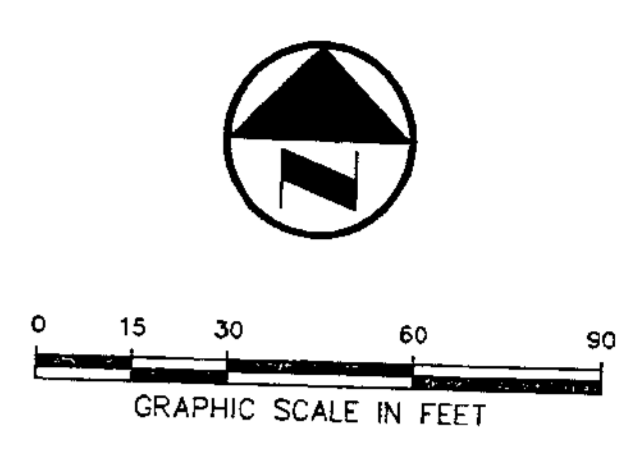
1 TREE / 600 SF LANDSCAPE AREA 67,000 SF / 112,000	67 TREES REQUIRED
3 SHRUBS / 600 SF LANDSCAPE AREA 163,000 SF / 166,000	51 TREES / 10 EXT. TREES PROVIDED 31 PROP. TREES REQUIRED 30 SHRUBS PROVIDED 310 SHRUBS PROVIDED

**Sec.13-443 (6)
Buffer Requirements**

South - ABUTTING RESIDENTIAL 3 TREES / 100 LF FT. 347.5 TREES CONTINUOUS HEDGE	4 TREES REQUIRED 4 TREES PROVIDED CONTINUOUS HEDGE PROVIDED
West - ABUTTING School 1 TREE / 40 LF FT. 613 LF / 40 = 15.3 TREES CONTINUOUS HEDGE	16 TREES REQUIRED 16 TREES PROVIDED CONTINUOUS HEDGE

Street Tree Requirement

COCONUT CREEK PARKWAY 1740 LF 372 LF x 61 TREES	13 TREES ADDED TO THE INTERIOR OF THE SITE DUE TO THE EDUCATIONAL CORRIDOR DESIGN
LYONS ROAD 1740 LF 372 LF x 63 TREES	14 TREES ADDED TO THE INTERIOR OF THE EDUCATIONAL CORRIDOR DESIGN



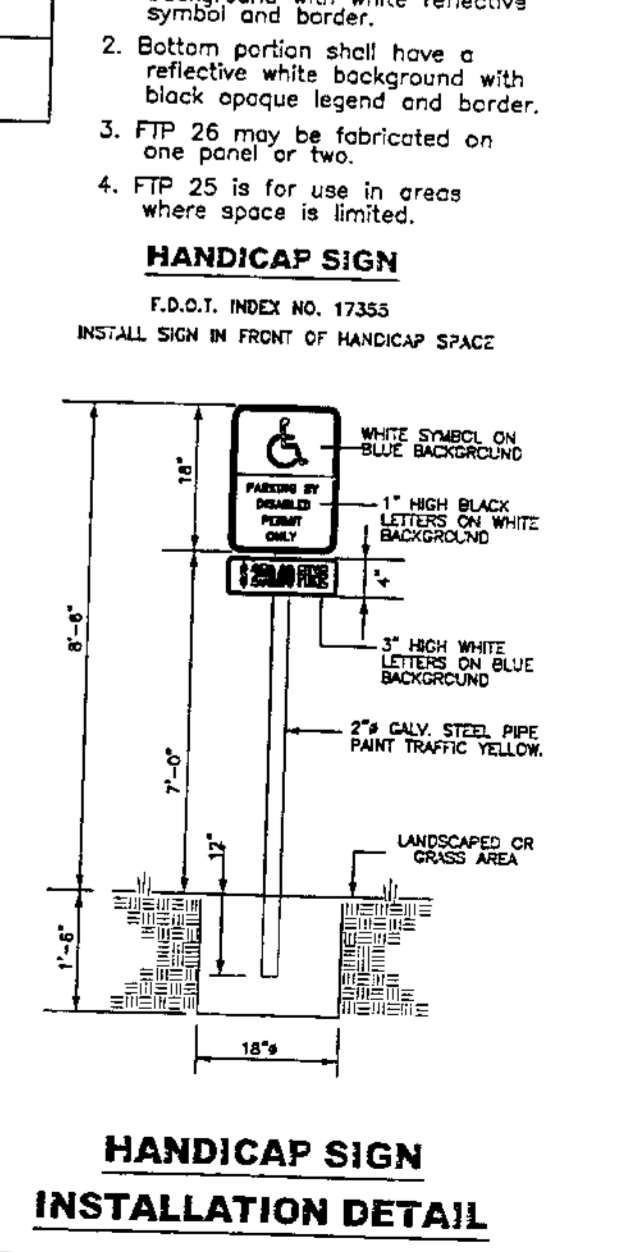
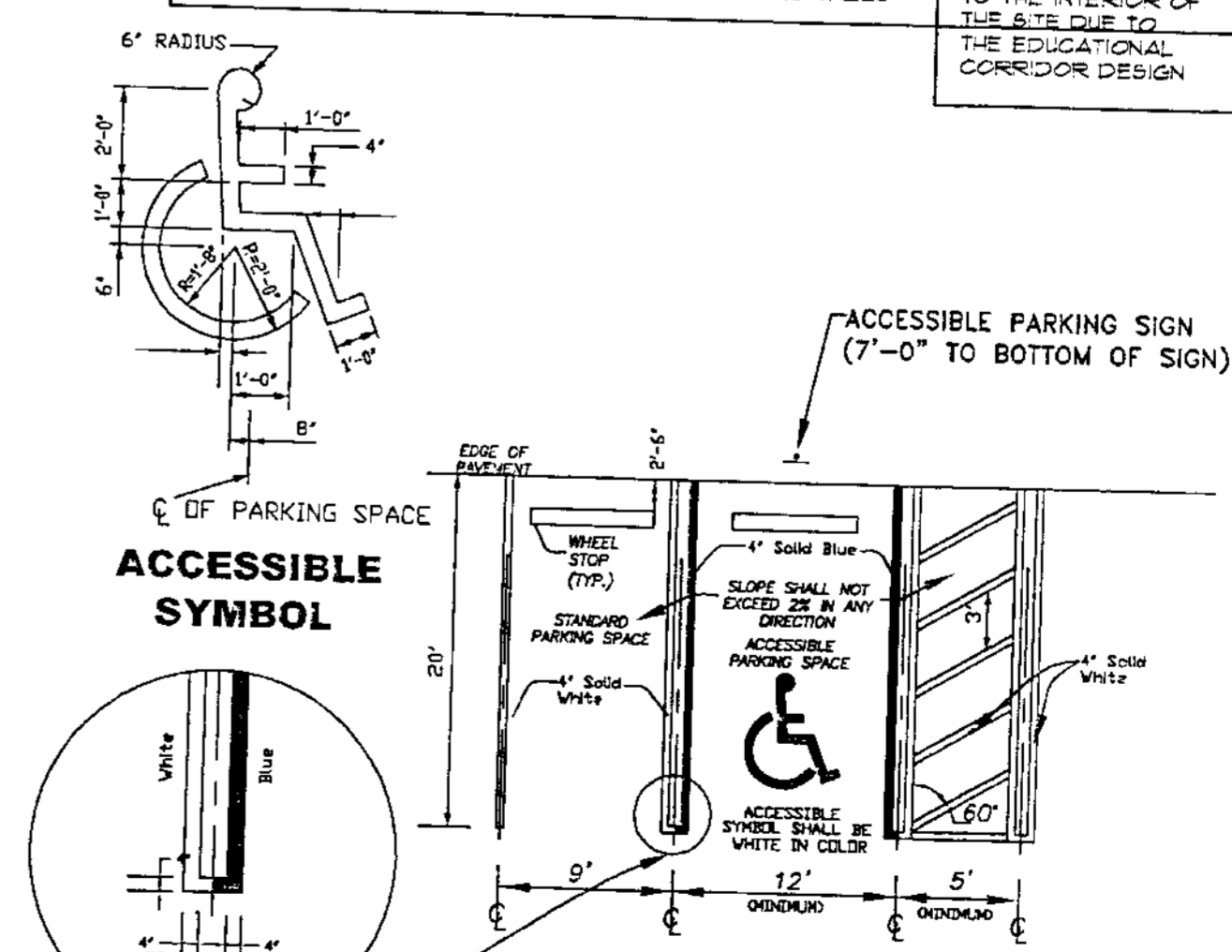
DATE:	8-19-05	SCALE:	1"=30'
DESIGN BY:	MRK	DRAWN BY:	MRK
CHECKED BY:	MRK	DATE:	9-27-05
APPROVED BY:	JDH	DATE:	

DESCRIPTION:

1. PLZ. RE-SUBMITTAL
1. PLZ. SUBMITTAL

GRAVEN - THOMPSON AND ASSOCIATES, INC.
ENGINEERS • PLANNERS • SURVEYORS
3506 W. PALM BLVD., SUITE 200, FORT LAUDERDALE, FLORIDA 33309
TEL: (954) 356-4444 FAX: (954) 328-4444
FLORIDA LICENSED PROFESSIONAL ARCHITECTURE BUSINESS NO. 20004171
FLORIDA LICENSED PROFESSIONAL LANDSCAPE ARCHITECTURE BUSINESS NO. 20004171
NATIONAL BOARD MEMBER OF THE SOCIETY OF PROFESSIONAL LANDSCAPE ARCHITECTS
MEMBER OF THE AMERICAN SOCIETY OF PLANNERS AND THE AMERICAN SOCIETY OF SURVEYORS

STRADA DIVIRIFIED REALTY LANDSCAPE PLAN



PROJECT NO.
05-0061

L-1
SHEET OF