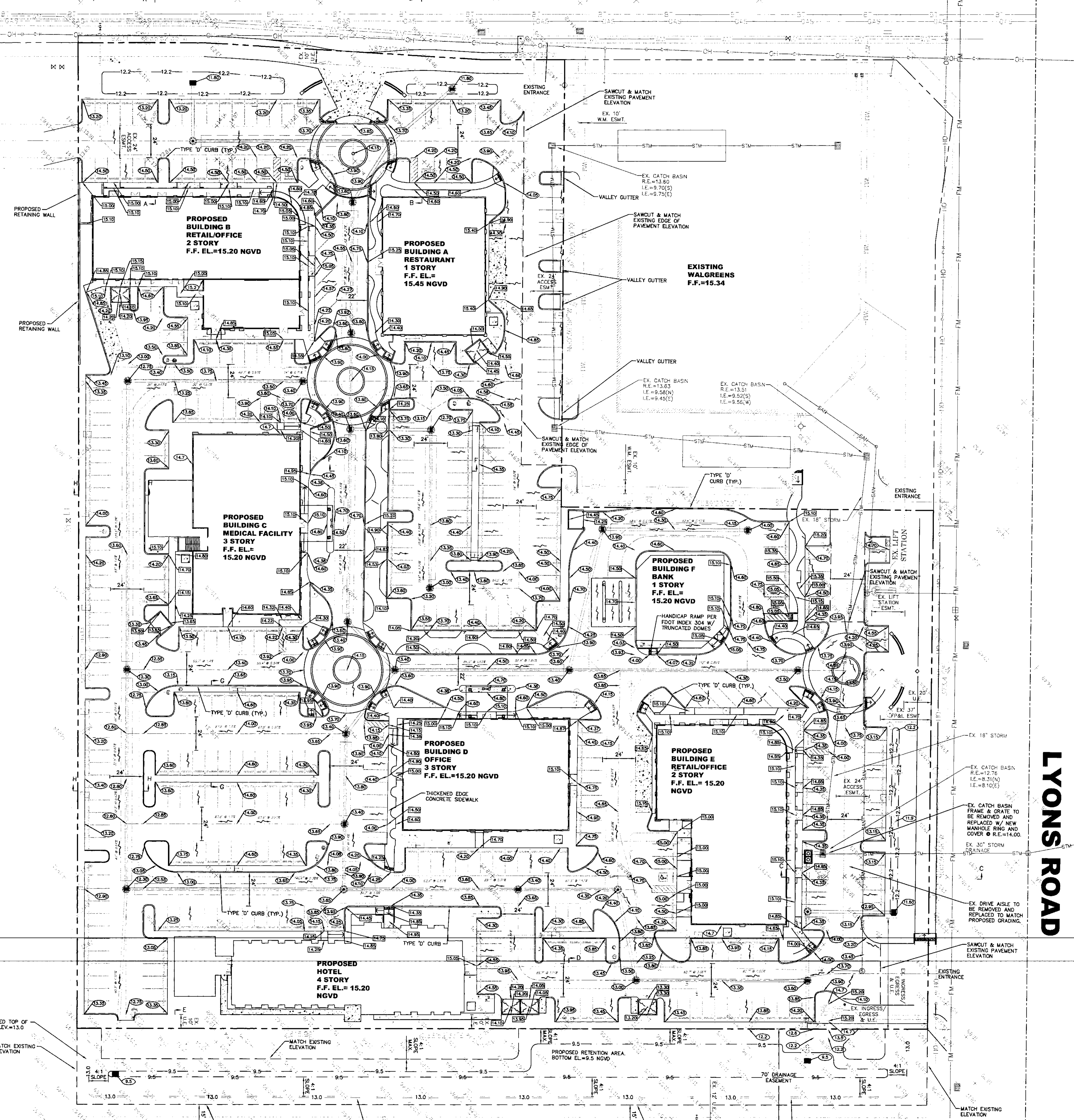


COCONUT CREEK PARKWAY

HCESD REF. # 05000000



LYONS ROAD

- PROPOSED LEGEND—PAVING & GRADING**
- (X.XX) INDICATES SPOT ELEVATION
 - (X.XX) INDICATES SIDEWALK/CONCRETE ELEVATION
 - FLOW ARROW
 - INDICATES PROPOSED PAVEMENT CROSS-SECTION W/ 1-1/2" D.O.T. TYPE 5-B ASPHALT, 6" LIMEROCK BASE, AND 12" STABILIZED SUBGRADE. (REFER TO CROSS-SECTION LEGEND FOR SPECIFICATIONS).
 - PROPOSED STORM INLET WITH EXFILTRATION TRENCH
 - PROPOSED STORM MAINTENANCE ACCESS STRUCTURE
 - INDICATES CLEANOUT FOR ROOF DRAIN
 - F.F.= INDICATES FINISH FLOOR ELEVATION
 - L.F. INDICATES LINEAR FOOTAGE OF PIPE
- EXISTING LEGEND**
- PROPERTY LINE
 - STW STORM SEWER
 - SAN SANITARY SEWER
 - WM WATER MAIN
 - FM FORCE MAIN
 - GAS GAS LINE
 - BURIED TELEPHONE
 - OVERHEAD WIRE
 - ⊕ FIRE HYDRANT
 - ⊗ GATE VALVE
 - ⊘ PLUG
 - ⊘ SANSE FIRE CONNECTION
 - ⊘ WATER METER
 - ⊘ REDUCER
 - ⊘ PLUG
 - ⊙ SANITARY MANHOLE
 - ⊙ SANITARY CLEANOUT
 - ⊙ CATCH BASIN
 - ⊙ STORM MANHOLE
 - ⊙ POWER POLE
 - ⊙ POLE ANCHOR
 - ⊙ METAL LIGHT POLE W/ CONCRETE BASE
 - ⊙ UTILITY BOX
 - ⊙ SPOT ELEVATION

- ABBREVIATION LEGEND**
- D.I.P. DUCTILE IRON PIPE
 - P.V.C. POLYMER CONCRETE
 - C.M.P. CORRUGATED METAL PIPE
 - R.C.P. REINFORCED CONCRETE PIPE
 - W.C.P. WITHEED CLAY PIPE
 - P.E. POLYETHYLENE
 - P.R.B. POLLUTION RETARDANT Baffle
 - R.W.L. RAIN WATER LEADER
 - U.E. UTILITY EASEMENT
 - ESMT. EXISTING EASEMENT
 - EX.-EXIST. EXISTING ELEVATION
 - EX.-ELEV. EXISTING ELEVATION
 - L.F. LINEAR FEET
 - I.E. INVERT ELEVATION
 - G.E. GRATE ELEVATION
 - R.M. RIM ELEVATION
 - G.O.P. BOTTOM OF PIPE
 - T.O.P. TOP OF PIPE
 - R/W RIGHT OF WAY
 - F.H. FIRE HYDRANT
 - G.V. GATE VALVE
 - CB CATCH BASIN
 - M.H. MANHOLE
 - C.O. CLEANOUT
 - W.M. WATER MAIN
 - DRN. DRAINAGE
 - STW. STORM SEWER
 - SAN. SANITARY SEWER
 - S.S. SANITARY SEWER MAINTENANCE ACCESS STRUCTURE
 - M.A.S. MAINTENANCE ACCESS STRUCTURE
 - F.F. FINISH FLOOR
 - N.G.V.D. NATIONAL GEODETIC VERTICAL DATUM
 - F.S. FLORIDA STATE
 - N.V.A.L. NON VEHICULAR ACCESS LINE

PERMIT SET
MUST BE ON JOBSITE AT ALL TIMES DURING CONSTRUCTION

ALL MATERIAL USED AND INSTALLATIONS MADE WITHIN THE PUBLIC RIGHT-OF-WAY OR EASEMENTS SHALL BE IN ACCORDANCE WITH BROWARD COUNTY HIGHWAY CONSTRUCTION AND ENGINEERING DIVISION SPECIFICATIONS.

NOTICE
APPROVAL OF THIS PLAN DOES NOT CONSTITUTE A PERMIT FOR CONSTRUCTION. A PERMIT FOR CONSTRUCTION MUST BE OBTAINED FROM THE BROWARD COUNTY HIGHWAY CONSTRUCTION AND ENGINEERING DIVISION PRIOR TO COMMENCING CONSTRUCTION IN THE PUBLIC RIGHT-OF-WAY.

NOTICE
INSPECTION REQUIRED 24 HRS. PRIOR TO COMMENCING ANY WORK IN THE PUBLIC R/W CONTACT THE BROWARD COUNTY HIGHWAY CONSTRUCTION AND ENGINEERING DIVISION AT (954) 577-4800 FOR INSPECTION

BROWARD COUNTY HIGHWAY CONSTRUCTION AND ENGINEERING DIVISION

PLAN CONSISTENT WITH PLAT REQUIREMENTS
PUBLIC RIGHT OF WAY APPROVAL FOR PAVING, GRADING AND DRAINAGE
BY: _____ DATE: _____
DOES NOT INCLUDE APPROVAL OF FANDBY MARKING & SIGNS

DATE:	8/23/05	BY:	
SCALE:	1"=30'	DATE:	
DESIGN BY:	MJC	DESCRIPTION:	
DRAWN BY:	MJC		
CHECKED BY:	MJC		
APPROVED BY:			

GRAVEN THOMPSON AND ASSOCIATES INC.
ENGINEERS • PLANNERS • SURVEYORS
3945 S.W. 10TH STREET, FORT LAUDERDALE, FLORIDA 33309
3045 FAX (954) 444-4400 TEL: (954) 759-6466
FLORIDA LICENSE # 238-8440 ARCHITECTURE BUSINESS PLAN # 000071
FLORIDA LICENSE # 238-8440 ARCHITECTURE BUSINESS PLAN # 000071

STRADA

DIVERSIFIED REALTY INC.

PRELIMINARY PAVING & GRADING PLAN

Robert M. Connors
Florida P.E. No. 41863
NOV 22 2005

PROJECT NO. 05-0061

C-1

SHEET 1 OF 5