

NOTES:

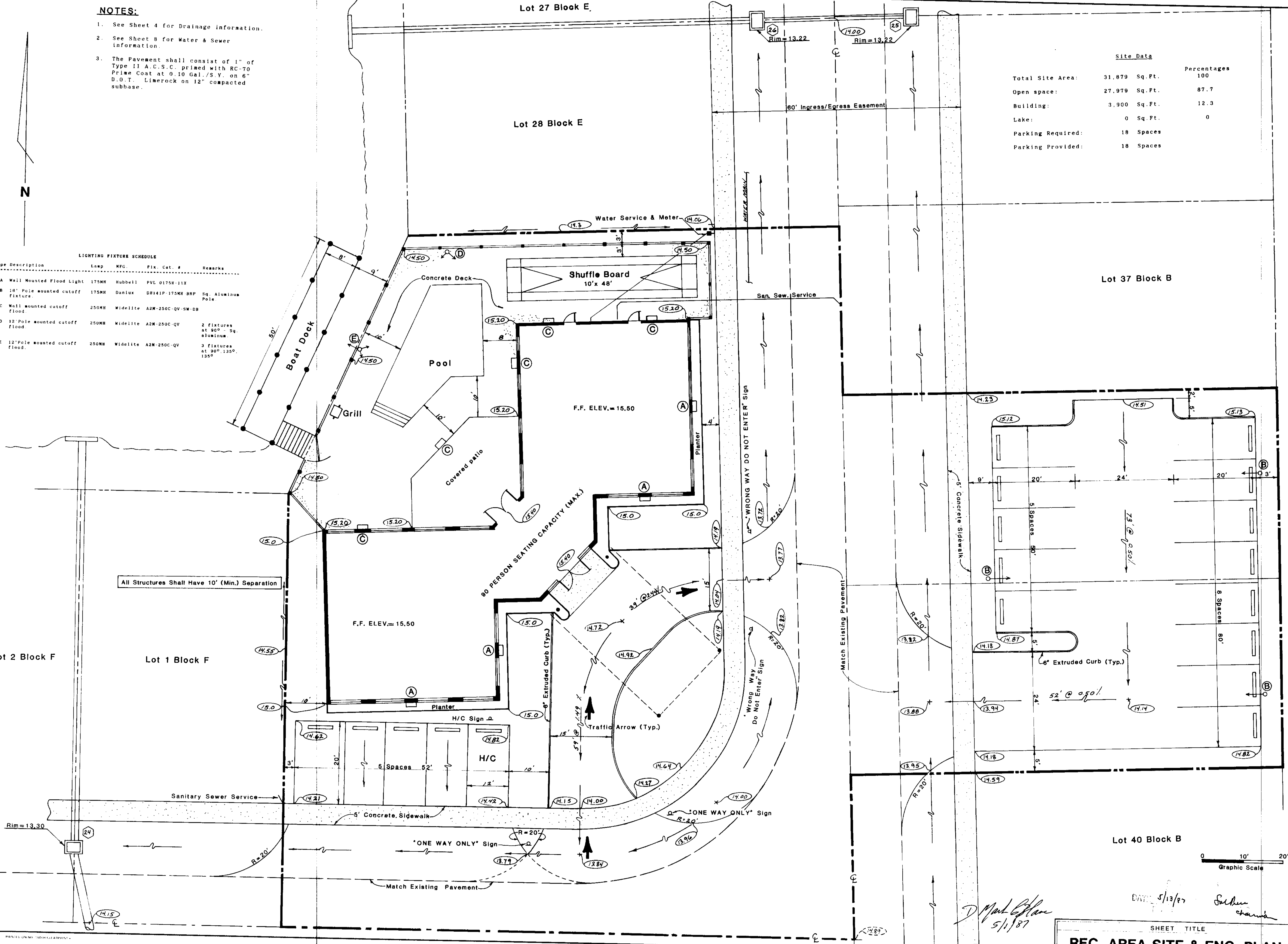
- See Sheet 4 for Drainage information.
- See Sheet 8 for Water & Sewer information.
- The Pavement shall consist of 1" of Type II A.C.S.C. primed with RC-70 Prime Coat at 0.10 Gal./S.Y. on 6" D.O.T. Limerock on 12" compacted subbase.

REVIS
Add Mark
on Lot 24
Add Eng

Site Data		Percentages
Total Site Area:	31,879 Sq.Ft.	100
Open space:	27,979 Sq.Ft.	87.7
Building:	3,900 Sq.Ft.	12.3
Lake:	0 Sq.Ft.	0
Parking Required:	18 Spaces	
Parking Provided:	18 Spaces	

LIGHTING FIXTURE SCHEDULE

Type Description	Lamp	MFG.	Fix. Cat. #	Remarks
A Wall Mounted Flood Light	175MH	Hubbell	PVL 0175H-11X	
B 10' Pole mounted cutoff fixture	175MH	Danlux	DM141P-175MH BRP	Sq. Aluminum Pole
C Wall mounted cutoff Flood	250MH	Widelite	A2N-250C-QV-SM-DB	
D 12' Pole mounted cutoff Flood	250MH	Widelite	A2N-250C-QV	2 fixtures at 90° - Sq. aluminum
E 12' Pole mounted cutoff Flood	250MH	Widelite	A2N-250C-QV	3 fixtures at 90° 135° 135°



GRIFFIN/EVANS & ASSOCIATES, INC.
Consulting Engineers, Planners & Surveyors
5398 South West 61 Avenue
Davie, Florida 33314
(305) 473-6877

TALLOWOOD ISLE

FLORIDA'S TURNPIKE



D. Paul Clark
5/1/87

DATE 5/13/87
Sullivan

SHEET TITLE
REC. AREA SITE & ENG. PLAN

Scale	1" = 10'
Date	Feb. 1987
Drawn by	Jce
Sheet	19
Of Sheets	
Job	87003