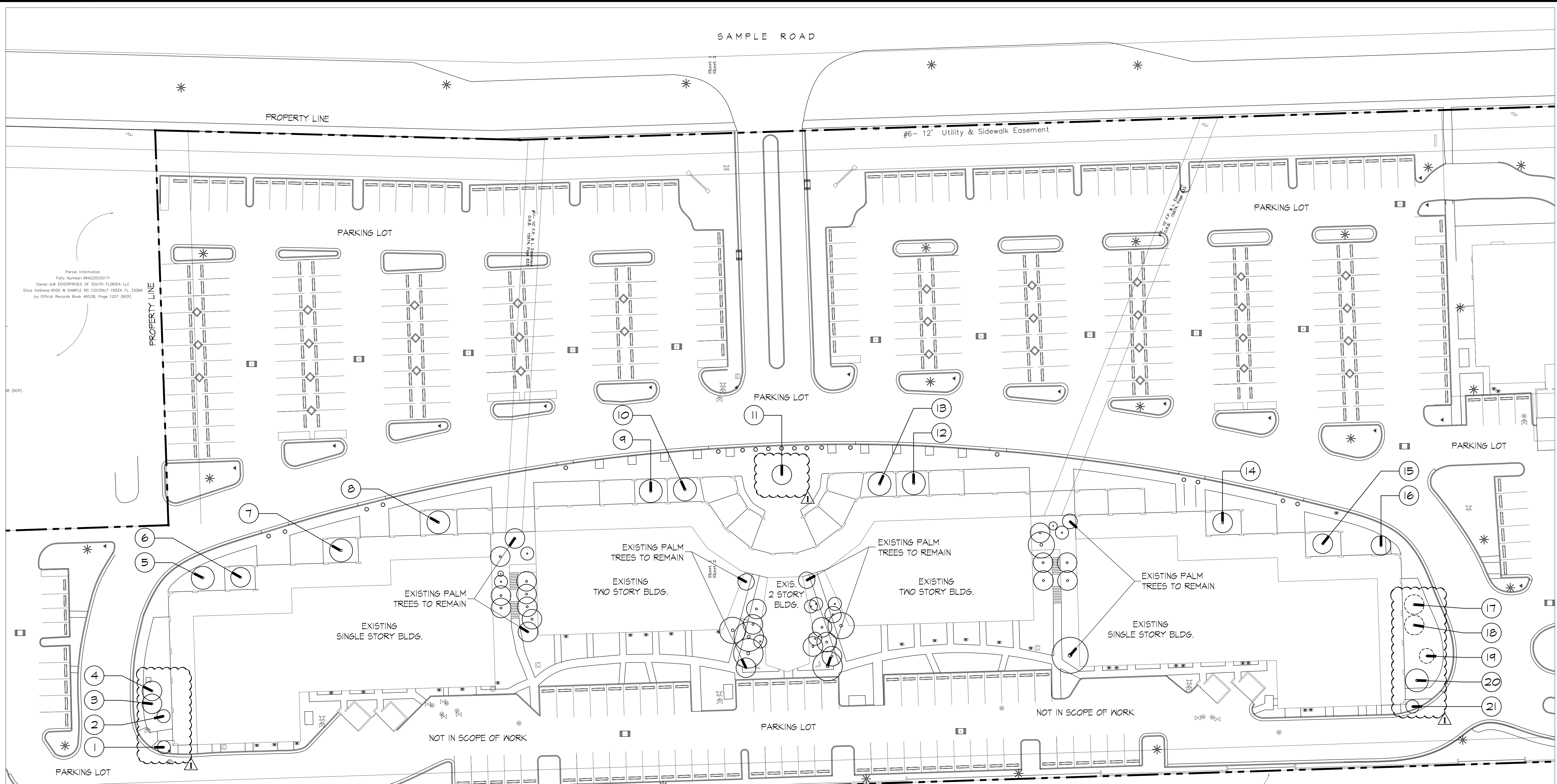


**TOWN CENTER PLAZA**  
4400 West Sample Road, Coconut Creek, Florida 33066  
**TREE SURVEY & DISPOSITION PLAN**

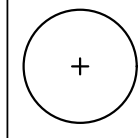
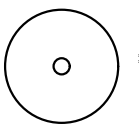
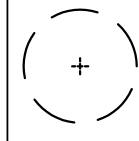
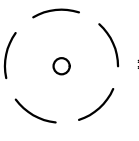
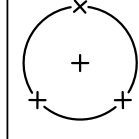
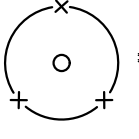


REMOVED FROM SET  
(NO MITIGATION REQUIRED)

**TOWN CENTER PLAZA - TREE DISPOSITION LIST**

| NUMBER        | COMMON NAME      | BOTANICAL NAME       | DBH (IN) | HEIGHT (FT) | SPREAD (FT) | CONDITION | DISPOSITION | CANOPY SF |
|---------------|------------------|----------------------|----------|-------------|-------------|-----------|-------------|-----------|
| 1             | Sabal Palm       | Cabbage palm         | 10       | 22          | 8'          | GOOD      | REMAIN      | 0.0       |
| 2             | Queen Palm       | Syagrus romanoffiana | 10       | 18          | 6           | FAIR      | REMAIN      | 0.0       |
| 3             | Queen Palm       | Syagrus romanoffiana | 12       | 30          | 12          | FAIR      | REMAIN      | 0.0       |
| 4             | Queen Palm       | Syagrus romanoffiana | 12       | 34          | 12          | FAIR      | REMAIN      | 0.0       |
| 5             | foxtail Palm     | Wodyetia bifurcata   | 14       | 35          | 15          | GOOD      | REMAIN      | 0.0       |
| 6             | foxtail Palm     | Wodyetia bifurcata   | 12       | 30          | 12          | GOOD      | REMAIN      | 0.0       |
| 7             | foxtail Palm     | Wodyetia bifurcata   | 14       | 35          | 15          | GOOD      | REMAIN      | 0.0       |
| 8             | foxtail Palm     | Wodyetia bifurcata   | 12       | 30          | 12          | GOOD      | REMAIN      | 0.0       |
| 9             | foxtail Palm     | Wodyetia bifurcata   | 14       | 30          | 14          | GOOD      | REMAIN      | 0.0       |
| 10            | foxtail Palm     | Wodyetia bifurcata   | 14       | 20          | 14          | GOOD      | REMAIN      | 0.0       |
| 11            | Hybrid Date Palm | Phoenix dactylifera  | 5        | 14          | 14          | POOR      | REMAIN      | 0.0       |
| 12            | foxtail Palm     | Wodyetia bifurcata   | 12       | 30          | 14          | GOOD      | REMAIN      | 0.0       |
| 13            | foxtail Palm     | Wodyetia bifurcata   | 12       | 30          | 14          | GOOD      | REMAIN      | 0.0       |
| 14            | foxtail Palm     | Wodyetia bifurcata   | 12       | 30          | 14          | GOOD      | REMAIN      | 0.0       |
| 15            | foxtail Palm     | Wodyetia bifurcata   | 12       | 30          | 14          | GOOD      | REMAIN      | 0.0       |
| 16            | foxtail Palm     | Wodyetia bifurcata   | 12       | 30          | 14          | GOOD      | REMAIN      | 0.0       |
| 17            | Queen Palm       | Syagrus romanoffiana | 12       | 30          | 12          | GOOD      | RELOCATE    | 0.0       |
| 18            | Queen Palm       | Syagrus romanoffiana | 12       | 30          | 12          | GOOD      | RELOCATE    | 0.0       |
| 19            | Sabal Palm       | Cabbage palm         | 18       | 20          | 9           | FAIR      | RELOCATE    | 0.0       |
| 20            | Queen Palm       | Syagrus romanoffiana | 10       | 30          | 14          | FAIR      | REMAIN      | 0.0       |
| 21            | Sabal Palm       | Cabbage palm         | 10       | 22          | 8           | FAIR      | REMAIN      | 0.0       |
| total sq. ft. |                  |                      |          |             |             |           |             | 0.0       |

**DISPOSITION LEGEND:**

|  |  |
|--|--|
|  TREE TO REMAIN       |  PALM TO REMAIN       |
|  TREE TO BE RELOCATED |  PALM TO BE RELOCATED |
|  TREE TO BE REMOVED   |  PALM TO BE REMOVED   |

**REVISIONS:**

|            |              |
|------------|--------------|
| 03-03-2020 | DRC COMMENTS |
|            |              |
|            |              |
|            |              |

November 18, 2019  
DATE  
S.O.Q.  
DRAWN BY:  
M.J.  
APPROVED BY:

This drawing is the property of Design Studio Boca, and is an instrument of service not to be reproduced in whole or in part without the express written permission of same.

