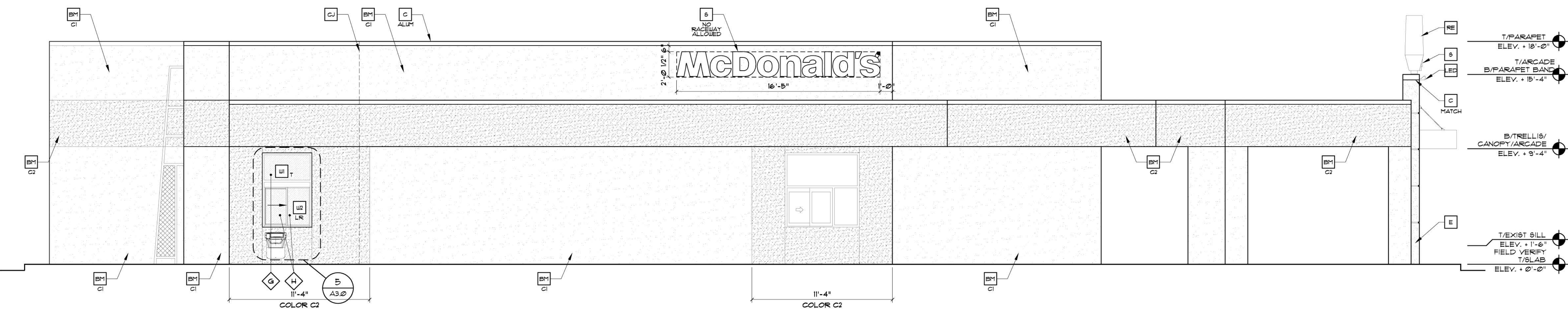


1 SIDE / WEST ELEVATION
1/4" = 1'-0"



2 SIDE / EAST ELEVATION
1/4" = 1'-0"

KEY NOTES:

- | | | | | | | |
|---|---|---|---|--|---|---|
| <p>A METAL AWNING - UNDER SEPARATE PERMIT, COLOR TO BE ALTERNATING STRIPES TO MATCH PANTONE 123C AND 109C</p> <p>BM NEW CEMENTITIOUS FINISH</p> <p>C1 COLOR: SHERWIN WILLIAMS SOCIABLE 6353</p> <p>C2 CHOICE CREAM 6351</p> | <p>C METAL COPING - COLOR - ALUMINUM</p> <p>C METAL COPING - COLOR TO MATCH SURROUNDING MATERIAL</p> <p>C1 NEW ALUMINUM CANOPY 36x16 BY OTHERS (COLOR: YELLOW)</p> <p>C2 NEW ALUMINUM CANOPY TIE-BACK BY OTHERS</p> | <p>C3 NEW ALUMINUM CANOPY 18x16 BY OTHERS (COLOR: YELLOW)</p> <p>CJ CEMENTITIOUS CONTROL JOINT</p> <p>CP CORRUGATED METAL BAND BY METAL ERA - 800-558-2162 - ALUMINUM - 1/8" 19" PANEL 24 GAUGE (COLOR: CITYSCAPE)</p> <p>E CEMENTITIOUS FINISH COLOR - BENJAMIN MOORE 2122-10 SNOW WHITE</p> | <p>EV EXPANSION JOINT</p> <p>L LIGHT FIXTURE (WALL SCONCE) - SEE ELECTRICAL</p> <p>LE ACCENT LIGHTING - SEE ELECTRICAL</p> <p>L1 UP AND DOWN FIXTURE</p> <p>L2 DOWN ONLY FIXTURE</p> <p>L3 INTEGRAL CANOPY FIXTURE</p> <p>L4 UP ONLY FIXTURE</p> | <p>LP LIGHT FIXTURE (PARAPET LIGHT) - SEE ELECTRICAL</p> <p>ML METAL LETTERING - BY OTHERS</p> <p>PB PIPE BOLLARD - PAINTED YELLOW</p> <p>RE 45 FT ROOF ELEMENT & SUPPORT BY OTHERS - SEE ROOF PLAN AND SECTIONS</p> | <p>S McDONALD'S NEXT-GEN SIGNAGE BY OTHERS - UNDER SEPARATE PERMIT.</p> <p>T1 ALUMINUM TRELLIS</p> <p>T3 2X8 WALL FASCIA</p> <p>W1 EXTERIOR WINDOW ASSEMBLY - SEE A3.0</p> <p>T TEMPERED GLASS</p> | <p>W2 DRIVE-THRU WINDOW BY READY ACCESS CONFIRM MODEL, OPTIONS, AND SIZE WITH MCD PROJECT MANAGER. OPTIONS INCLUDE: TRANSOM (SHOWING), AIR CURTAIN, FLYAN/TRANSOM & 432 SQ IN MAX SERVICE OPENING (WHERE REQ'D BY CODE)</p> <p>SLIDE DIRECTION:
RL = RIGHT TO LEFT
LR = LEFT TO RIGHT</p> <p>W3 AMICO VINYL MID-WALL WEEP SCREED OR APPROVED EQUAL</p> |
|---|---|---|---|--|---|---|

ENTIRE PAGE

SCOTT J. PURDY
AR 91876

No. 1102.72

TITLE: MRP REMODEL
4200 W. SAMPLE ROAD
COCONUT CREEK, FL
ST/SITE# 009-1012
NAT# 10901
DATE

ISSUE 02.01.12
REV 01.15.14

SHEET NO

A2.1

AA-0003276

© COPYRIGHT BY HARTLEY ARCHITECTURE, INC. ALL RIGHTS RESERVED 9/12

