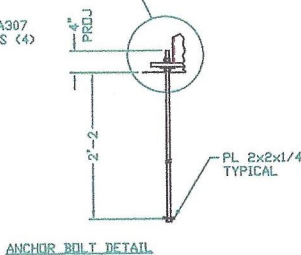
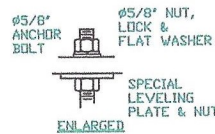
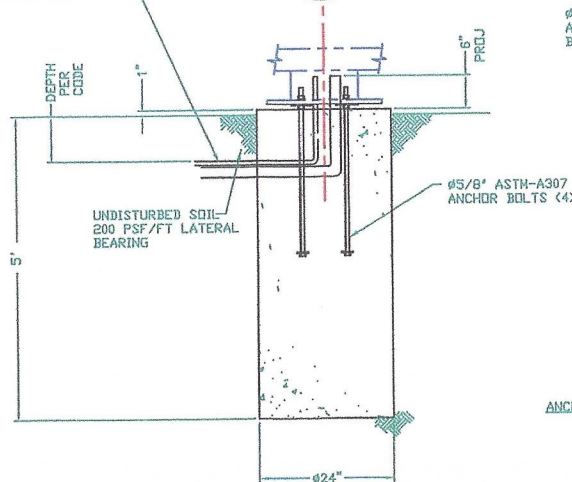
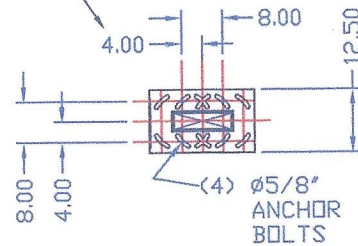
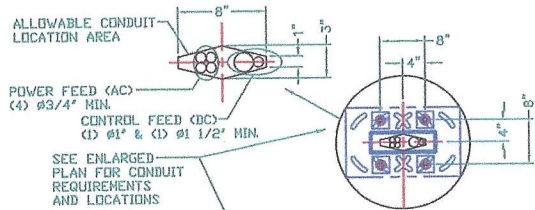
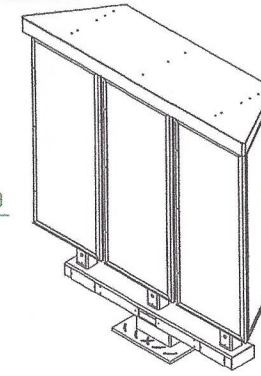
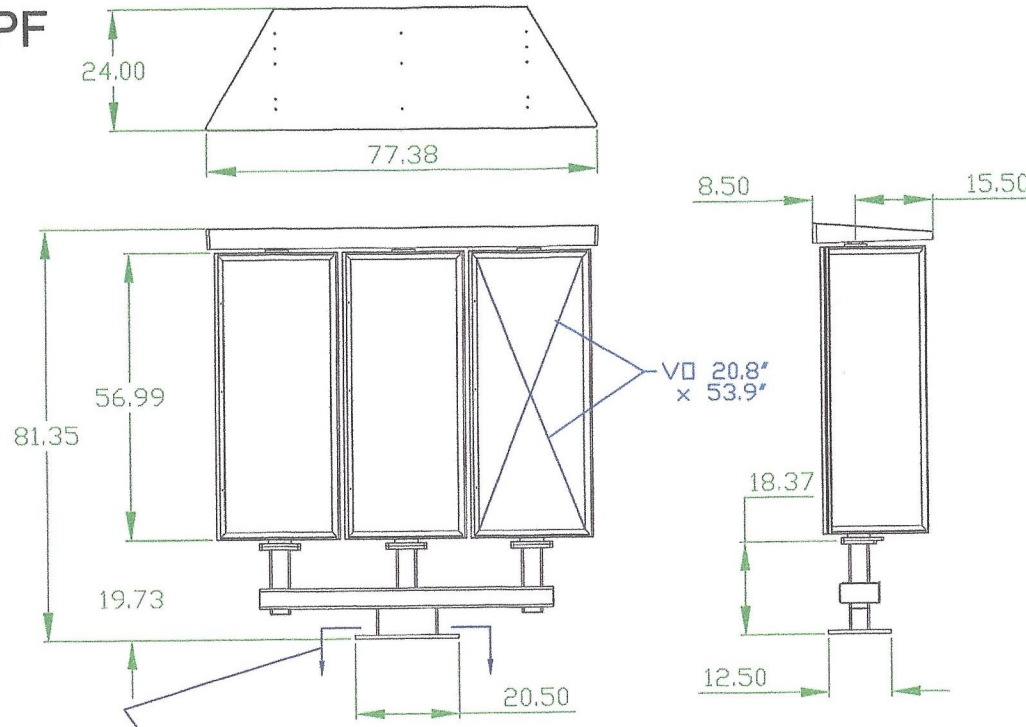


I, J

MENUBOARD - NEW OPF



ELECTRICAL SPECIFICATIONS:
ILLUMINATED SQ FT: 23.3

WIND LOAD CRITERIA: 2010 F.B.C., 160 MPH Ultimate wind speed - exposure "D" Risk Category 1 Per ASCE 7-10. All fasteners and other metal in contact with aluminum shall be stainless steel or hot dip galv.

ELECTRICAL NOTES ILLUMINATED CABINETS

Primary wire size - #12 THWN
Disconnect switch - at base of sign, 20 amp single pole, time lock at panel room
Maximum load - 16 amps 120 volts per circuit maximum circuit size 20 amps per NEC 600-6A
Ballast - Universal H.O. or equiv.
Lamps - G.E. High output daylight or equiv. sizes vary with cabinet dimensions
Sockets - Kulka 5843 H.O. or equiv.
Conduit - minimum 1/2"
Total sign load - 8 amps 120 volts
Total sign circuits - 1
All components shall be U.L. approved
Ballasts shall have independent U.L. approval (fused where required)
All installations shall be in compliance with N.E.C. and state, county, or local codes
All signs shall be bonded to building equipment bonding conductor per N.E.C. 250

ELECTRICAL TO USE U.L. LISTED COMPONENTS AND SHALL MEET N.E.C. STANDARDS
UL Underwriters Laboratories Inc. LISTED ELECTRIC SIGN

Handwritten signature and date: 7/6/12

McDonald's
Coconut Creek
4200 W. Sample Blvd.
Coconut Creek, FL.

Kemp Signs inc.
1767 Hill Ave.
West Palm Beach, Fl. 33407
561-840-6382 fax 561-840-6385

ALBERT A. GARGIULO, P.E.
CONSULTING ENGINEER
Lic. No. PE 32582
324 SUNSET RD.
WEST PALM BEACH, FL. 33401
561-686-5554