

CITY OF COCONUT CREEK  
**RECEIVED**  
APR 4 1990  
**RECEIVED**  
DEPARTMENT OF  
COMMUNITY DEVELOPMENT

## SIGNAGE

### THE TOWNSHIP PLAZA

Coconut Creek, Florida

**MINTO BUILDERS (FLORIDA), INC.**

**Approved** Extra  
DATE 5-9-90 BY [Signature]  
PLANNING & ZONING

Revised 4/4/90

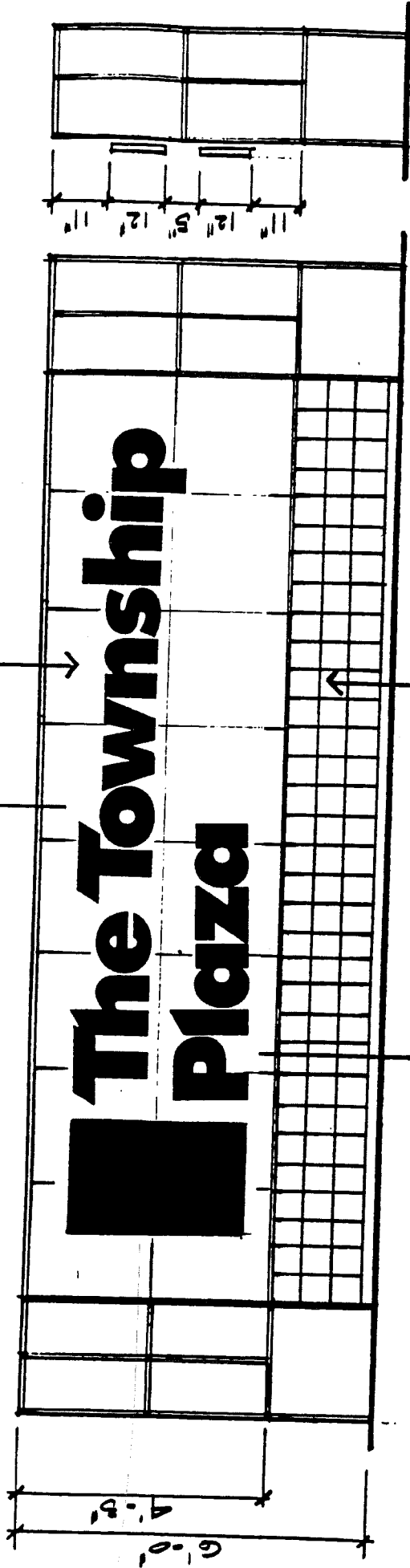
1. GROUND SIGN - TYPE 1

Two ground signs on Sample Road indicating the name of the center shall be located not closer than 15 feet from the public right-of-way. The maximum area of the sign is computed as follows: 12 percent x 2,109 ft. frontage = 253 square feet, to a maximum of 90 square feet per sign face.

The base letter height shall be 12 inches. The sign face shall be of concrete in color and texture to match the building. The letters shall be back-lit channel letters with plexiglass face (lighted through plexiglass face) and helvetica in style.

BLUE GREEN BACK-LIT CHANNEL  
LETTERS WITH NEIGHBOR FACE  
(LIGHTED THROUGH PLEXIGLASS FACE)

STONE FACE FINISH TO  
MATCH BUILDING

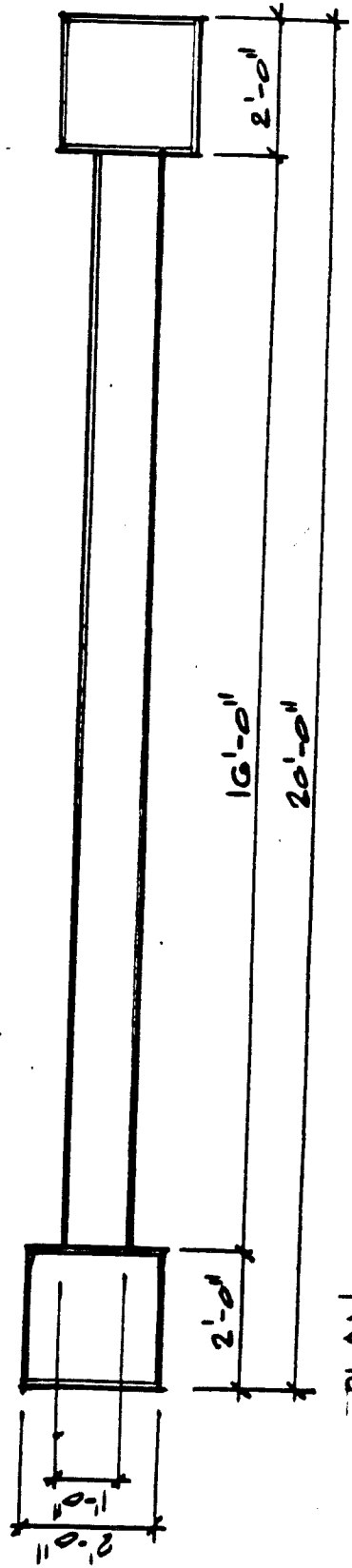


6" x 6" TILE TO  
MATCH STAIRS

SCAB LINE

FRONT ELEVATION

SIDE ELEVATION



PLAN

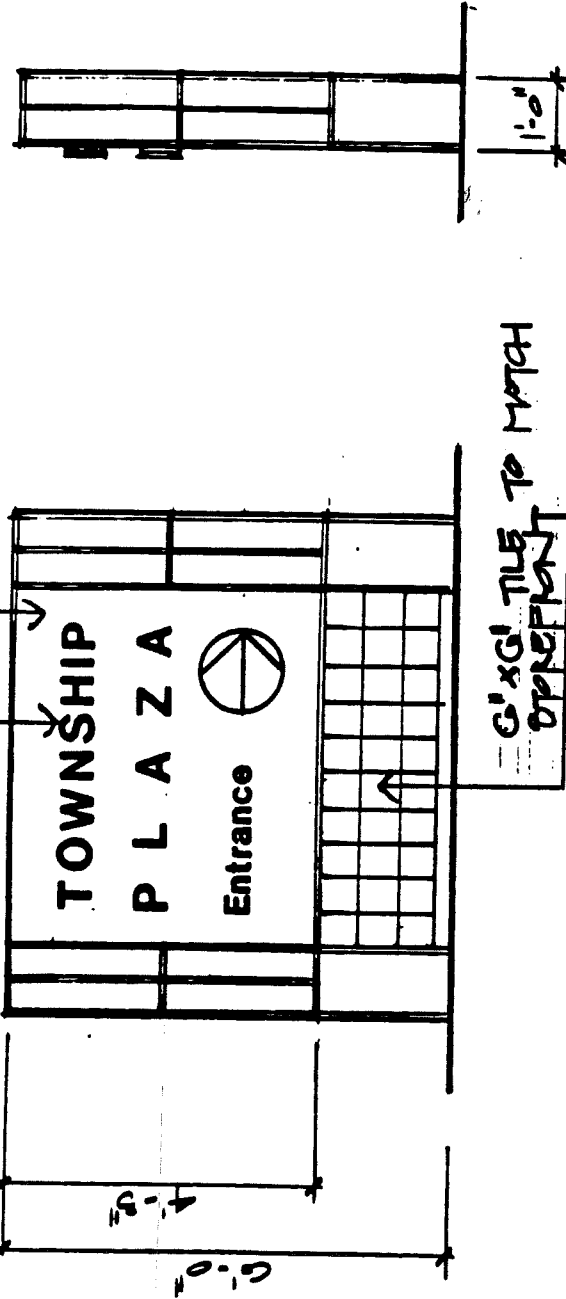
GROUND SIGN

11'-0" x 19'

2. DIRECTORY SIGN - TYPE - 2

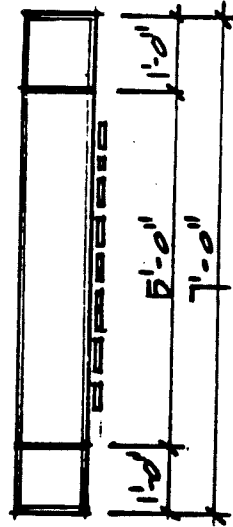
Three directory signs indicating the name and entrance to the center shall have a maximum sign face of 4 feet x 5 feet. The sign face shall be concrete in color and texture to match the building. The letters shall be back-lit channel letters with plexiglass face (lighted through plexiglass face) of 6 inches in height, extruded from the sign face a minimum of 3/8 of an inch, and helvetica in style.

BLUE ONION BRACK - LIT CHANNEL  
 LETTERS WITH NEON GLASS FACE  
 LIGHTED THROUGH FLEMING FACE



FRONT ELEVATION

SIDE ELEVATION



PLAN

DIRECTORY SIGN  
 10'-1" = 11'-0"

3. FASCIA SIGNAGE

One fascia sign shall be permitted per storefront indicating the name of the store or the type of service offered. Limitations based on the Design Schedule of Section 307.0709 are computed as follows:

Building B, C & D

Width of Right-of-Way: 200 feet  
Maximum Items of Information: 11  
Maximum Base Letters and Symbols Height:  
25 inches + (260 ft. minimum from street  
Right-of-Way + 50 ft. = 5 in.)  
= 30 inches Total.

27 inch letters are allowed by Minto Builders\*

Maximum Base Sign Area: 68 s.f. + (260 ft. x 5 percent = 25 percent = 17 s.f.)  
50 ft.  
= 85 s.f. Total per storefront.

Out Parcel Building A & E

Width of Right-of-Way: 200 feet  
Maximum Items of Information: 11  
Maximum base Letters and Symbols Height:  
25 inches + (80 ft. from street  
Right-of-Way + 50 ft. = 1 1/2 in.)  
= 26 1/2 inches Total.

Maximum Base Sign Area: 68 s.f. + (80 ft. x 5 percent = 8 percent = 5 s.f.)  
50 ft.  
= 73 s.f. Total per storefront.

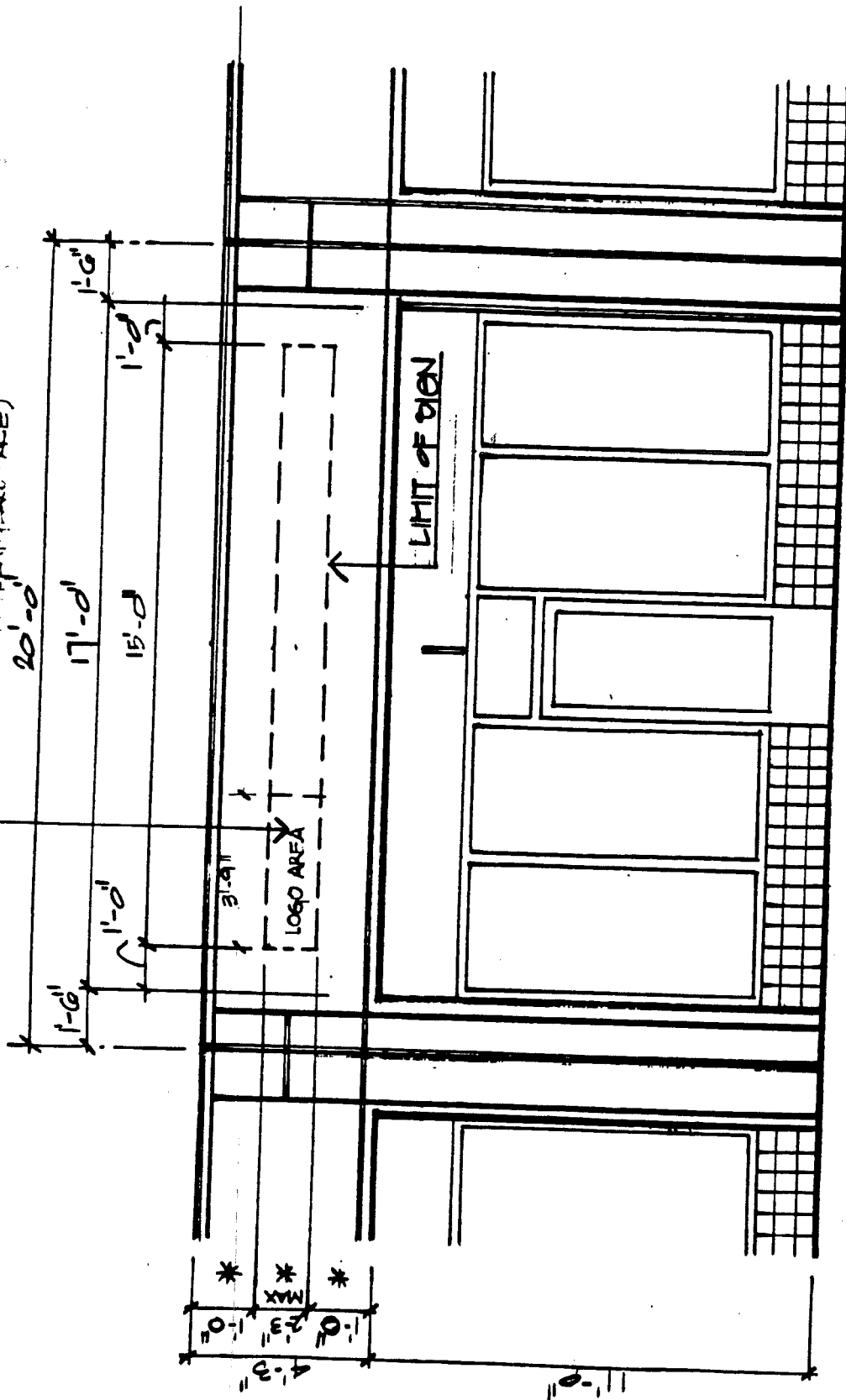
Letter Style

All letter styles shall be allowed provided approval, in writing, is obtained from Minto Builders and the City of Coconut Creek.\*

\*revised 4/4/90

\* 3M HOLLY GREEN FILM ON THE FRONT SIDE OF WHITE PLEXIGLAS  
 ALUM. RETURN & TRIM-CAP RETAINER TO MATCH 3M FILM IN COLOR

(L-16-TEL - 1-800-1-1-FIX-1-9-A-1-E FACE)  
 20'-0"



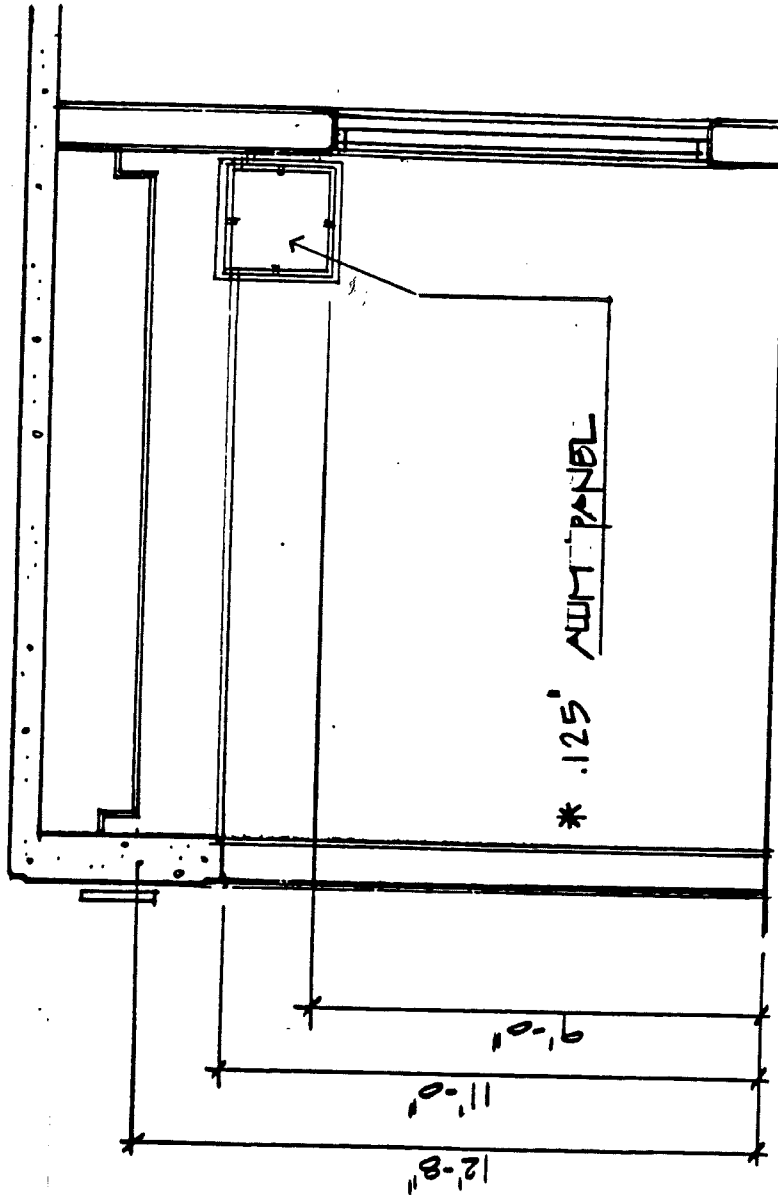
TYPICAL FACI/A VIEW  
 1/4" = 1'-0"

4. CANOPY SIGNAGE\*

One under canopy sign is permitted per store indicating the type of business or service offered. The maximum area of the sign is 24" high by a maximum of 24" long. The sign is to be made of .125 inch aluminum. Copy area not to exceed 3 ft<sup>2</sup>.

\*revised 4/4/90  
and 4/26/90





COPY BION  
 14" = 11'-0"

↓ SECTION 1

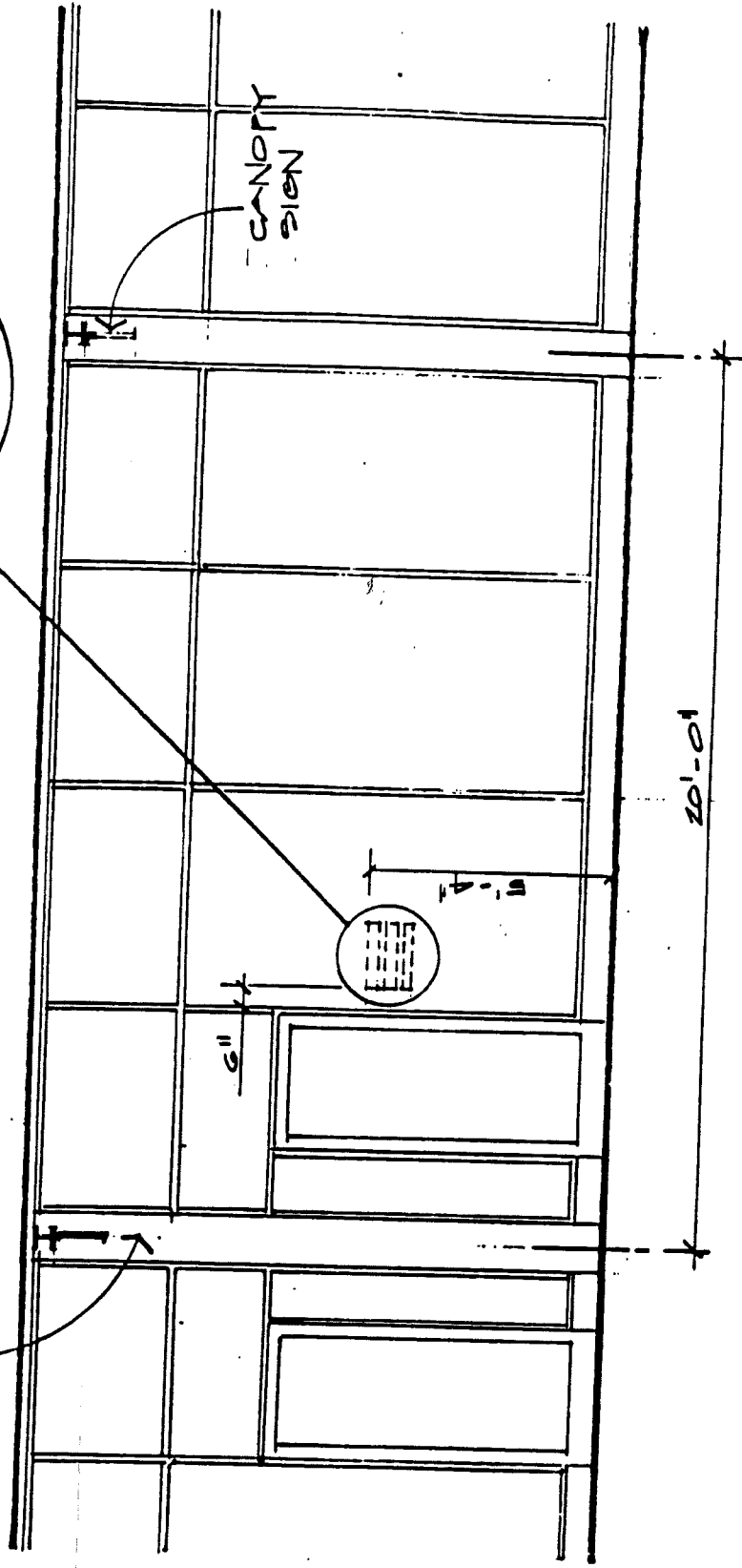
5. STOREFRONT IDENTIFICATION SIGNAGE

One storefront identification sign is permitted per storefront indicating the name of the store or type of service offered, and the hours of operation. The maximum area of the sign is 15 percent of the total glazed area. The letters shall be of die-cut vinyl with adhesive on the letter face to allow placement on the inside of the glass, and of helvetica in style.

Name  
Days  
Hours

PIE CUT VINYL  
LETTERS - WHITE

ALUM. COLUMN  
COVER COLOR TO  
MATCH MULLIONS



STOREFRONT SIGNAGE  
14" x 11'-01"

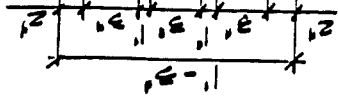
6. REAR IDENTIFICATION SIGNAGE

One rear identification sign is permitted per store indicating the name of the store or type of service offered and the hours of operation. The maximum area of the sign is 3 s.f. made of .125 aluminum. The letters will be white die-cut vinyl and helvetica in style.

DIE CUT VINYL  
LETTERS - WHITE

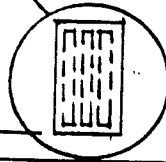
2'-5 1/2"

Name  
Days  
Hours



6"

ALUM. PANEL  
MATCH SCHEDULE



5'-4"

REAR IDENTIFICATION SIGNAGE  
1/4" x 1'-0 1/2"

**SECONDARY SIGN**  
(FOR BAY 31)

**PRIMARY SIGN**

**Retail P**

**SECONDARY SIGN**  
(FOR BAY 33)

**Line of Or**  
**Signage Band**

