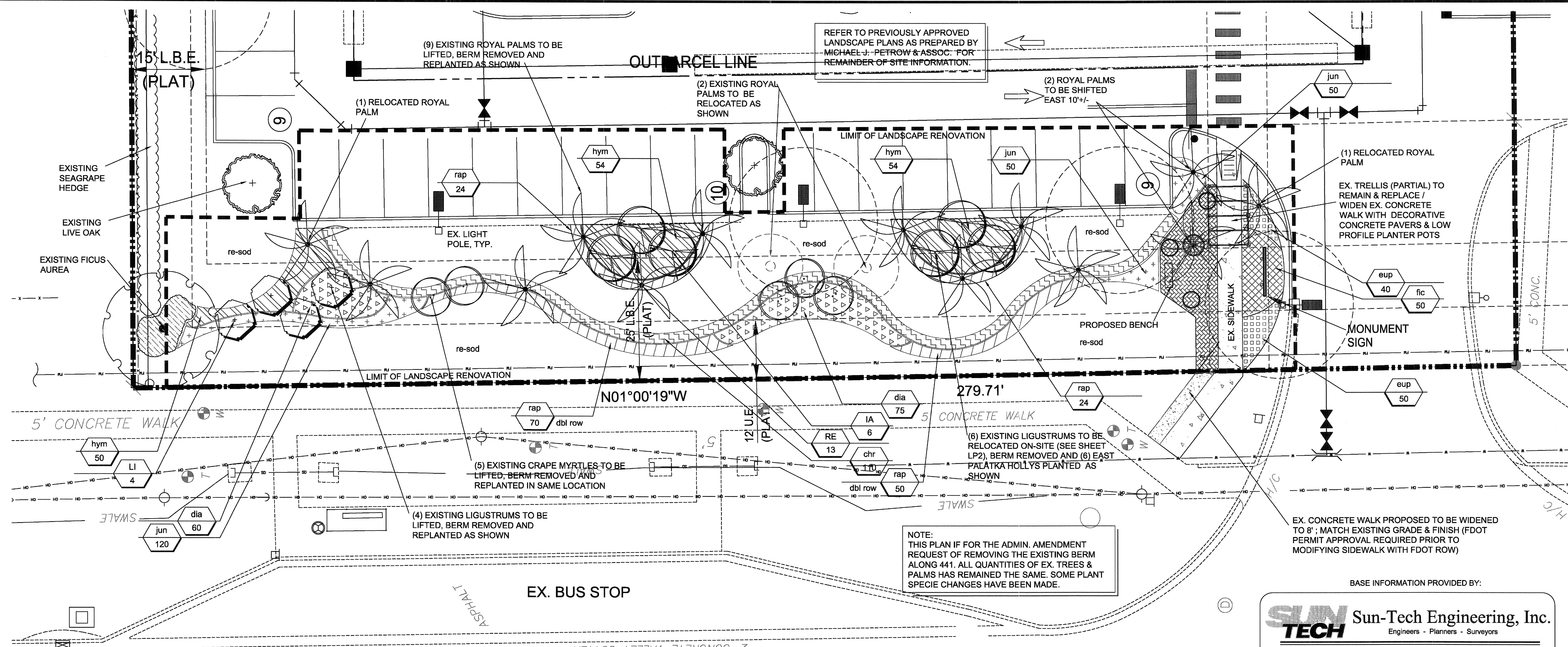


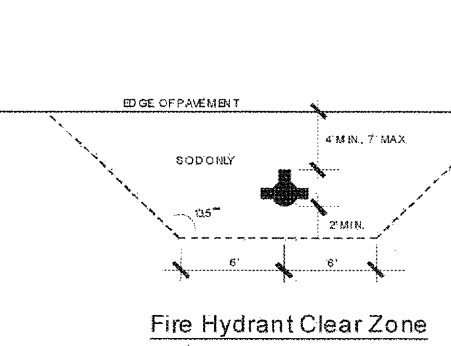
Lynn Bender Landscape Architecture
 5610 Adair Way
 Lake Worth, FL 33467
 Phone: 561-644-3237
 lbenderlarch@gmail.com
 FL-LA666715
 LC26000285

VILLAGE SHOPPES OF COCONUT CREEK
 441 & WILES ROAD COCONUT CREEK, FLORIDA
 441 WEST BUFFER LANDSCAPE PLAN



STATE ROAD 7 (US 441)

SUN TECH Sun-Tech Engineering, Inc.
 Engineers - Planners - Surveyors
 1600 West Oakland Park Boulevard
 Ft. Lauderdale, FL 33311
 www.suntecheng.com
 Certificate of Auth. # 7097
 Phone (954)777-3123
 Fax (954)777-3114

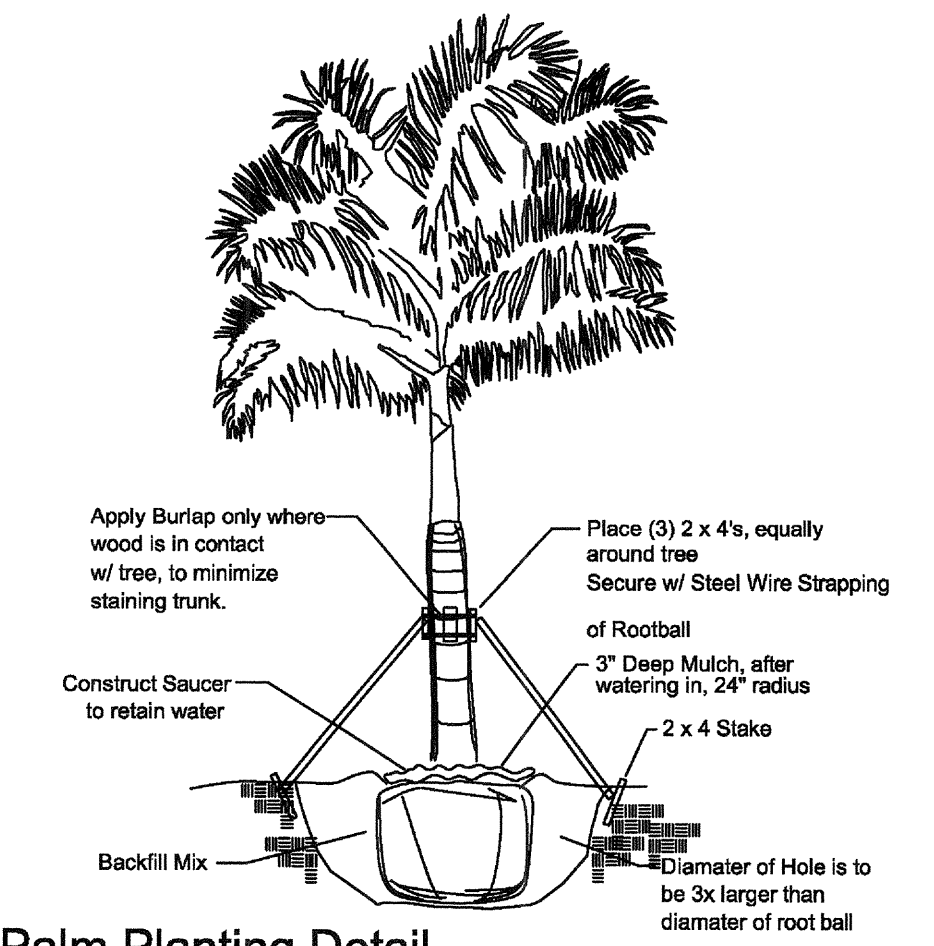


Fire Hydrant Clear Zone
 www.fdot.com

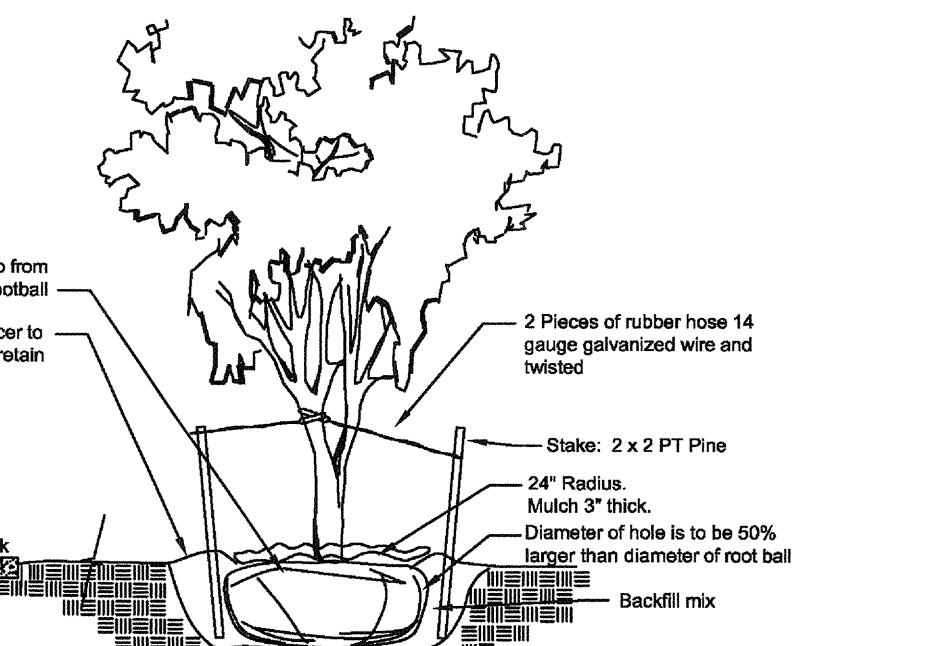
CITY OF COCONUT CREEK
 STANDARD LANDSCAPE NOTES - Commercial

- All landscape and specifications shall meet or exceed the minimum requirements as provided in the City of Coconut Creek Land Development Code. Plans are incomplete without written notes and specifications.
- All planting material shall meet or exceed Florida Grade #1 as specified in Grades and Standards for Nursery Plants, current edition. Trees shall not be topped, lopped, or shaped prior to installation.
- Landscape shall be planted to edge of abutting streets, canals, lakes or other lands.
- All mechanical equipment, air conditioning, irrigation pump stations and equipment, FPL transformers, pool pumps, etc. must be screened (3) sides by landscape shrubs.
- NOTE:** The quantity of screening shrubs is in addition to the required number of shrubs as provided in the code calculation table. All screening shrubs shall be planted for proper operation of equipment being screened and/or for the requirements of the utility as necessary. All hedge material required for screening purposes shall be planted with branches touching. Adjust on-center spacing as necessary and/or provide additional plants to provide an adequate screen.
- Sight distance cones must be maintained for clear sight visibility from thirty (30) inches to seventy-two inches, tree trunks excluded. Measurement shall be made from top of root ball planted at proper elevation.
- Guys/risers/poles shall not be permitted for trees, palms or other plant material. Trees, palms and plant material rejected due to this practice shall be replaced with the inspector on site.
- Burlap material, wire cages, plastic/canvas straps, etc., must be cut and removed for the top one-half (1/2) depth of the root ball. Trees and shrubs grown in grow bags or grow bag type material must have such material REMOVED ENTIRELY prior to planting the tree or shrub.
- All plant material shall be free of pests, insects, disease, weeds, etc.
- All required landscape material shall be installed using a planting soil mix comprised of a type appropriate to the individual proposed plant material and the native soil found on site.
- All plant material shall be planted at the proper depth, as originally grown and/or the top of the root ball is flush or slightly above finished grade immediately after planting. All trees should provide trunk taper when properly planted at the correct planting depth.
- All plant material shall be watered in at time of planting to eliminate air pockets in the root zone area.
- Color-treated or dyed mulch will not be accepted.
- Upon completion of work, the site shall be cleared of all debris, superfluous materials, and equipment caused by this permit to the satisfaction of the inspector.
- Refer to Coconut Creek Fire Equipment Clear Zone diagram to maintain a safe zone fronting fire hydrants.
- Do not plant trees, shrubs or groundcover within Electric Meter Clear Zone. Provide a safe zone as described by the Electrical Inspector.
- All landscaped areas shall be provided with an underground fully automatic irrigation system using pop-up sprinklers. System shall provide 100% coverage with 50% overlap (minimum) using rust free water, except preserved areas remaining in natural state. A rain sensor device or sensor shall be installed that will override the irrigation system when adequate rainfall has occurred. Water shall not be directed and/or provided onto impervious surfaces and/or be designed or installed to throw water over an impervious surface such as a sidewalk, etc. Hours of operation for all irrigation systems shall be limited to 5:00 p.m. to 9:00 a.m. only or as may be further restricted by South Florida Water Management District or other jurisdictional agency.
- Irrigation permits and plans shall be submitted for approval at time of building permits.
- All irrigation systems shall require a South Florida Water Management District water use permit prior to issuance of an irrigation permit and installation of the irrigation system as required.
- All site amenities to include site street lights, landscape control open space, irrigation common open space, buffers, berms, landscape entry features, etc. leading up to the certificate of occupancy must be completed and functional prior to issuance of the certificate of occupancy.
- The height of all required, designed and installed berms shall be from the highest adjacent point whether it is the sidewalk, parking area, vehicular use area, surrounding ground, etc. Where a berm abuts a sidewalk, there shall be a one (1) foot level sod area adjacent to the sidewalk prior to the start of grading for the berm.
- An inspection is required prior to the backfilling of trees/palms in all parking medians and islands.

NOTE: THIS COMMENT SHEET IS TO BE PLACED ON ALL LANDSCAPE PLANS "AS IS"

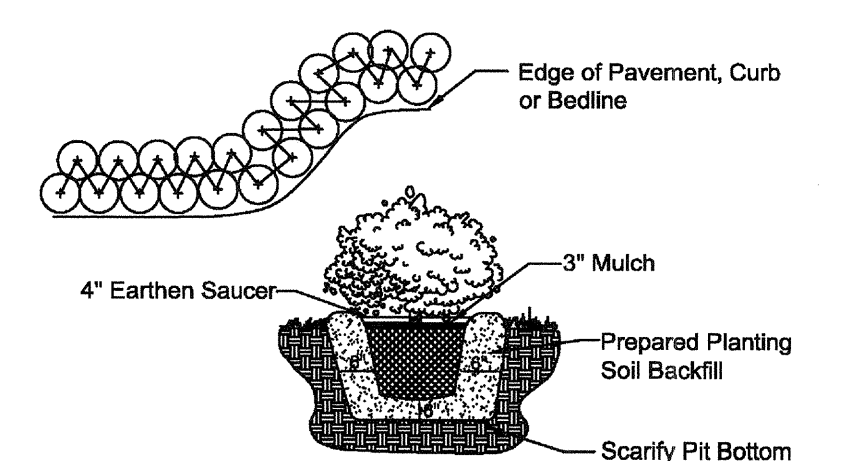


Palm Planting Detail
 Tree Stakes are to be removed between 6-12 months by the Owner. NTS

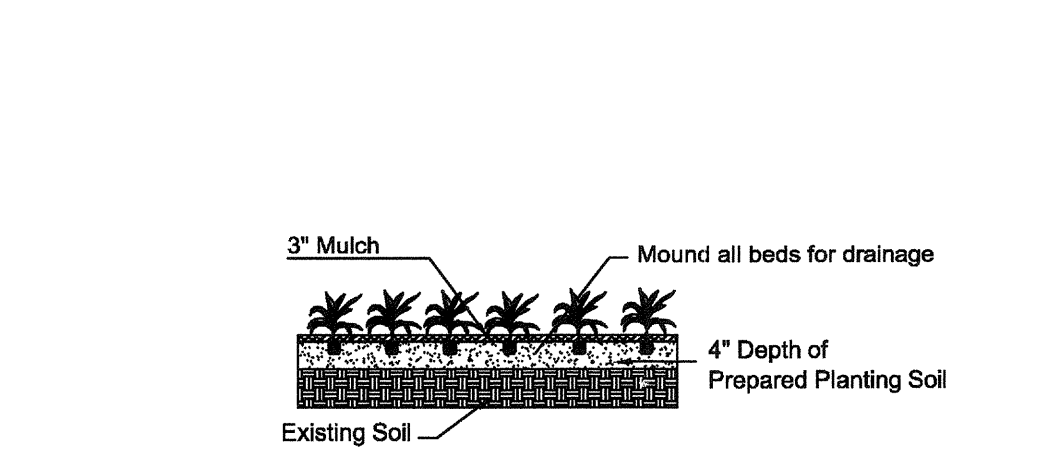


Tree Planting Detail
 Tree Stakes are to be removed between 6-12 months by the Owner. NTS

PLANT LIST				
KEY	QTY	COMMON NAME	SCIENTIFIC NAME	SIZE/SPEC
TREES				
IA	6	EAST PALATKA HOLLY	<i>Ilex attenuata</i>	10'x5' 3" CT, 1" DBH MIN. (replaces 7 ex. LL's which are to be relocated elsewhere on-site)
LI	5	GRAPE MYRTLE	<i>Lagerstroemia indica</i>	RELOCATED (original approved spec - 10'x4', 3'-4.5' CT, STD.)
LL	4	LIGUSTRUM STANDARD	<i>Ligustrum japonicum</i>	RELOCATED (original approved spec - 8'x4', 3' CT, MULTI STD.)
PALMS				
RE	13	ROYAL PALM	<i>Roystonea elata</i>	RELOCATED
SHRUBS & GROUNDCOVERS				
chr	110	RED TIP COCOPLUM	<i>Chrysobalanus icaco 'Red Tip'</i>	3-GAL; FULL TO BASE; PLANT TIP-TO-TIP
dia	135	FLAX LILY	<i>Dianella tasmanica 'var'</i>	1-GAL; FULL @ 18" OC
eup	90	CROWN OF THORN 'ROSIE'	<i>Euphorbia Rosie</i>	1-GAL; 8" MIN
fic	50	GREEN ISLAND FICUS	<i>Ficus microcarpa</i>	3-GAL; FULL @ 24" OC (EX. - REPLACE AS NEEDED)
hym	158	SPIDER LILY	<i>Hymenocallis latifolia</i>	1-GAL; FULL @ 15" OC
jun	220	JUNIPER	<i>Juniperus</i>	1-GAL; FULL @ 12" OC
rap	168	INDIAN HAWTHORN	<i>Raphiolepis indica 'White Alba'</i>	3-GAL; FULL @ 24" OC
TURF				
sod	tbd	ST. AUGUSTINE	<i>Stenotaphrum secundatum 'Floratum'</i>	SOD LAID FLAT, END TO END; NO GAPS; ROLLED
MISCELLANEOUS				
tbd		MULCH		NON-CYPRESS; FDA INSPECTED AND CERT. GRADE 'A'



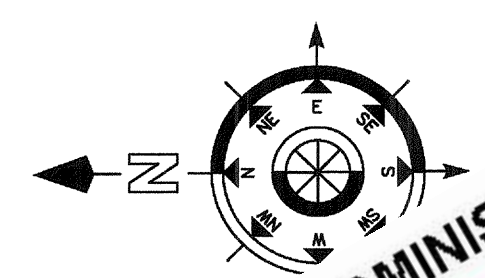
Shrub & Groundcover Planting Detail
 Note: All Shrubs And Groundcover Shall Be Triangular Spaced Along Straight Edges And Will Be Planted In Parallel Rows Along Curved Edges. NTS



Groundcover & Annual Detail
 NOTE: Annuals Are To Be Planted As Per Groundcover Detail Excluding Mulch. NTS

GENERAL NOTES:
 Contractor Shall be familiar w/ the Landscape code and shall comply with all of its applicable requirements.
 Contractor shall verify all quantities indicated at time of bid.
 Contractor shall provide unit prices at time of bid.
 All contractors working on the project shall be licensed and fully insured as required.
 All new planting areas shall be free from shell rock, debris, weeds, etc. and clean fill added prior to installation of plants.
 Mulch all plant beds as specified in details using hardwood, non-cypress to 3" depth.
FOR ALL TREE PLANTINGS:
 Synthetic burlap ball covering materials shall be completely removed.
 Wire baskets shall be cut off to a depth of 1/2 (half) the depth of the root ball.
 Burlap coverings shall be removed to a depth of 1/3 (third) of the root ball.
 Any tree support materials shall be removed from each tree once it is established.
 If any proposed Trees/Palms are adjacent to existing overhead utility lines, then principles of FPL "Plant the Right Tree in the Right Place" shall be adhered to. Alteration of proposed material shall be reviewed by Project LA for approval & notification to City of Coconut Creek.

Call 48 hours before dig in Florida
 It's the Low! 1-800-432-4770
 FPA's (305) 347-3900
 Sunshine State One Call of Florida, Inc.



ADMINISTRATIVE APPROVAL 12-6-11
APPROVED
 Project: Village
 Date: 10-26-11
 Scale: 1" = 10'-0"
 Sheet: LP1
 OF 2