

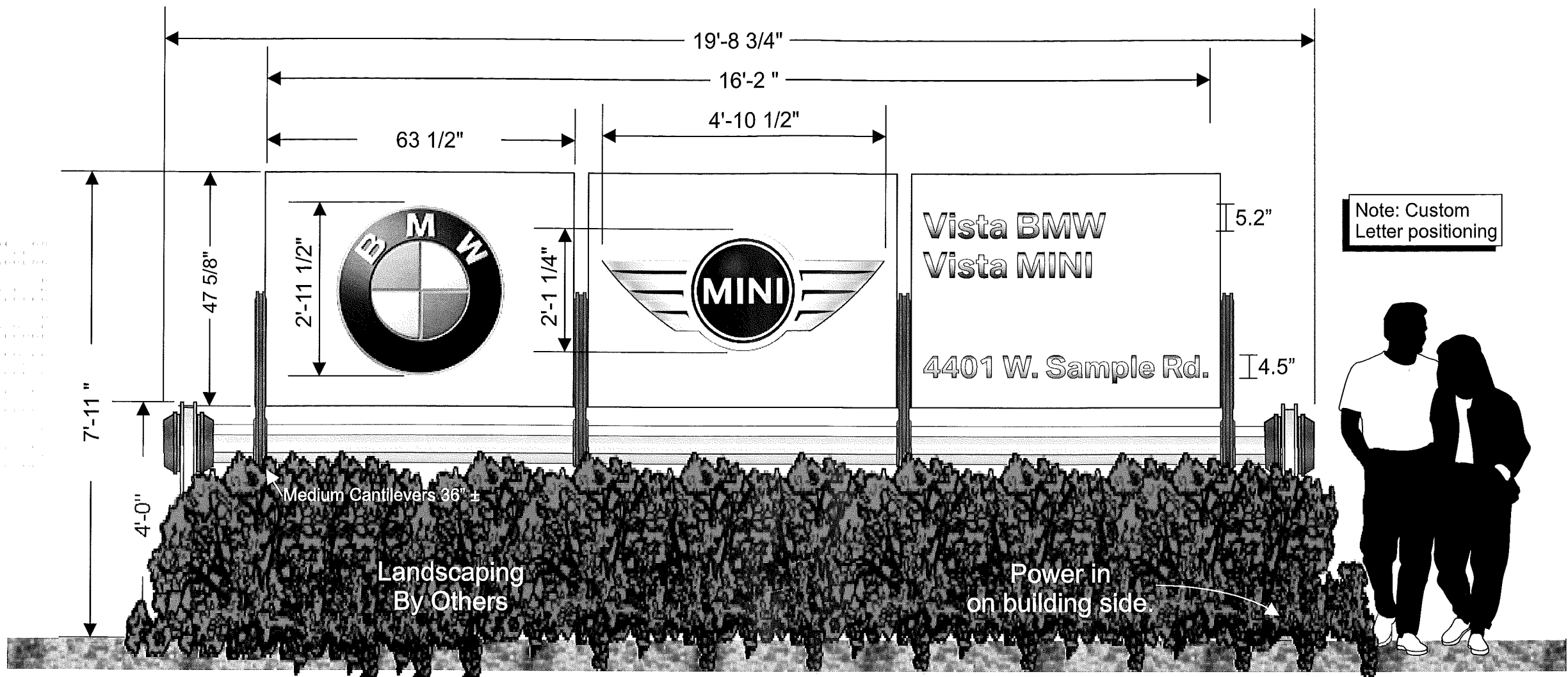
TOTALS:
 3 Monuments
 5 Facade
 8 Directionals



CLIENT:	VISTA MOTORS
LOCATION:	COCONUT CREEK
DATE:	9-12-02
DRAWING #	VISTA-001
APPRVD. BY:	Checked By:
DRAWN BY:	DEA

TOTAL: 89'

THIS DESIGN IS SUBMITTED AS PART OF OUR PROPOSAL AND IS TO REMAIN OUR PROPERTY EXCLUSIVELY UNTIL ACCEPTED AND APPROVED BY PURCHASE.



Application:
 When Pylon sign cannot be utilized due to site conditions and/or local codes, the monument serves as main ID for BMW Centers. Sign should be located in front of center near main roadway, perpendicular to traffic flow.

Specifications:
 Internal framing support using 1 1/2" x 1 1/2" angle. Background panel is .090" bright white aluminum with illuminated logo(s). Support is aluminum extrusions to match new BMW CID. Dealer name is Polished stainless steel lettering, VHB attachment to background.

Illumination:
 High output white fluorescent lamps.

Electrical Requirement:
 One 120v/20a circuit req'd. (Draw = 10.1 amps @120v)

Installation:
 Requires concrete footing to meet local codes.

Height of crown of adjacent road:
 sign #1 = 16'-8"
 sign #2 = 17'-1"
 sign #3 = 17'- 1"

Monument

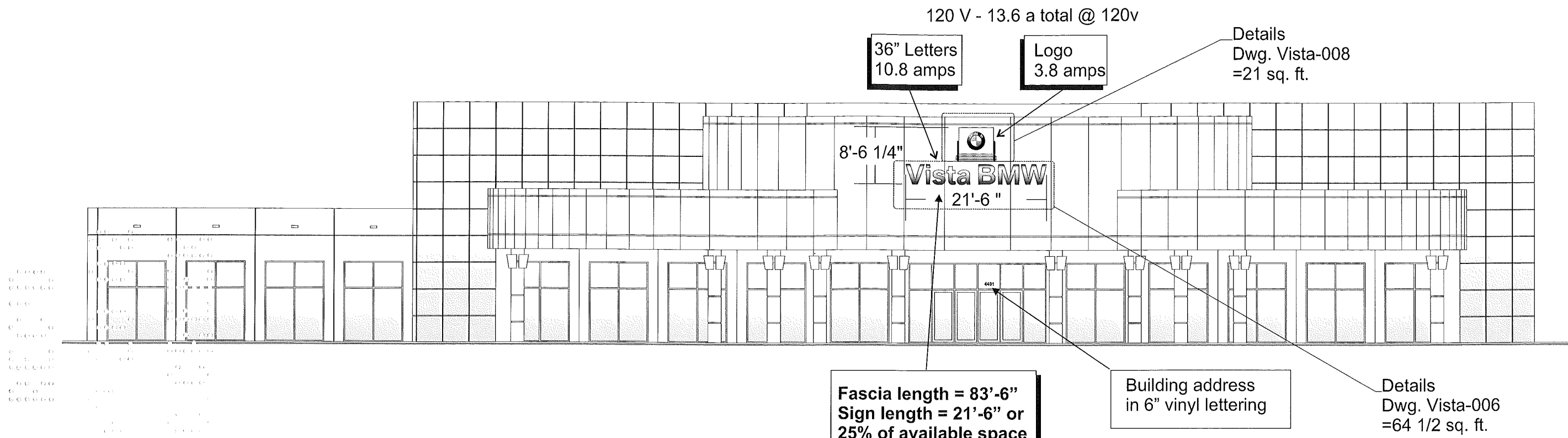
Scale: 3/8" = 1'-0"

3 signs total:
 #1: At West side of Sample Road entrance
 #2: At intersection of Sample Road & Lyons Road (Copy one side only)
 #3: At Lyons Road entrance



PH. 888-704-1516

CLIENT:	VISTA MOTORS
LOCATION:	COCONUT CREEK
DATE:	8/22/02
DRAWING #	Vista-002
DRAWN BY:	DEA
APPRVD. BY:	Checked By:



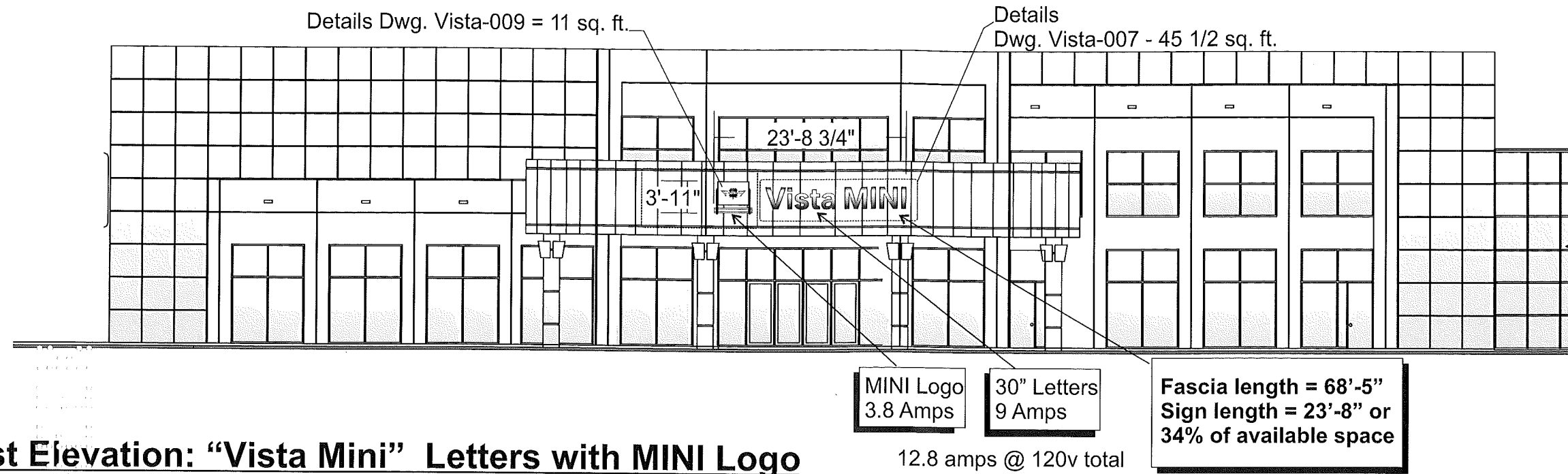
South Elevation: "Vista BMW" letters, w/BMW Logo

Scale: 1/16"=1'0"



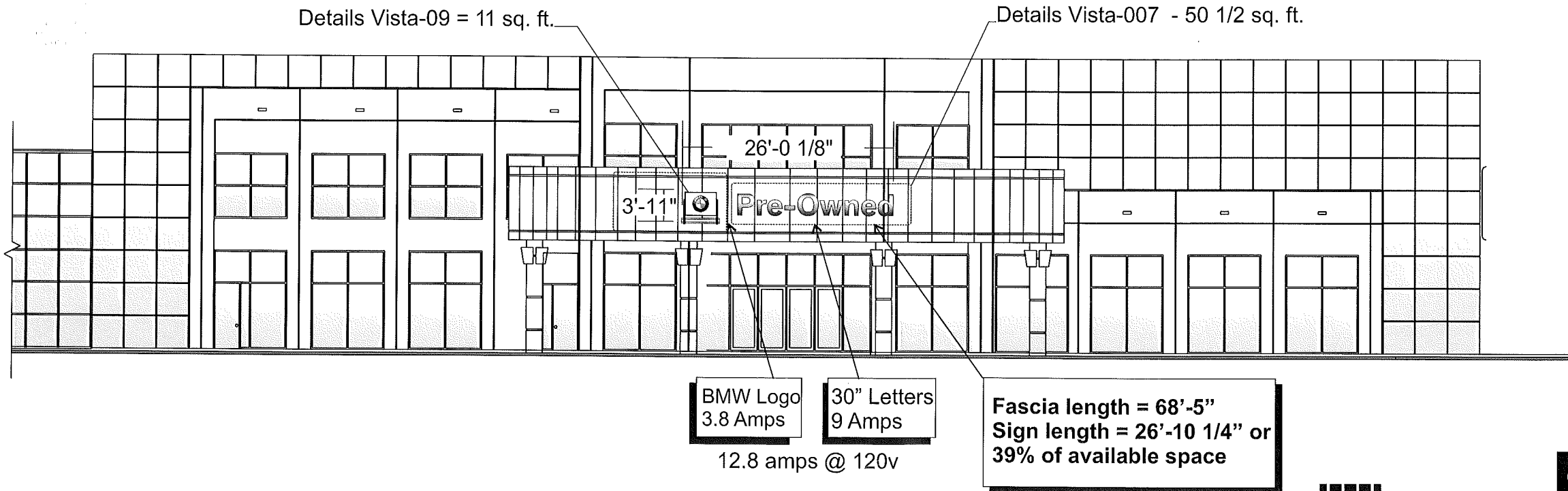
CLIENT:	VISTA BMW
LOCATION:	COCONUT CREEK
DATE:	8-26-02
DRAWING #	VISTA-003
APPRVD. BY:	Checked By:
DRAWN BY:	DEA

THIS DESIGN IS SUBMITTED AS PART OF OUR PROPOSAL AND IS TO REMAIN OUR PROPERTY EXCLUSIVELY UNTIL ACCEPTED AND APPROVED BY PURCHASE.



East Elevation: "Vista Mini" Letters with MINI Logo

Scale: 1/16"=1'0"



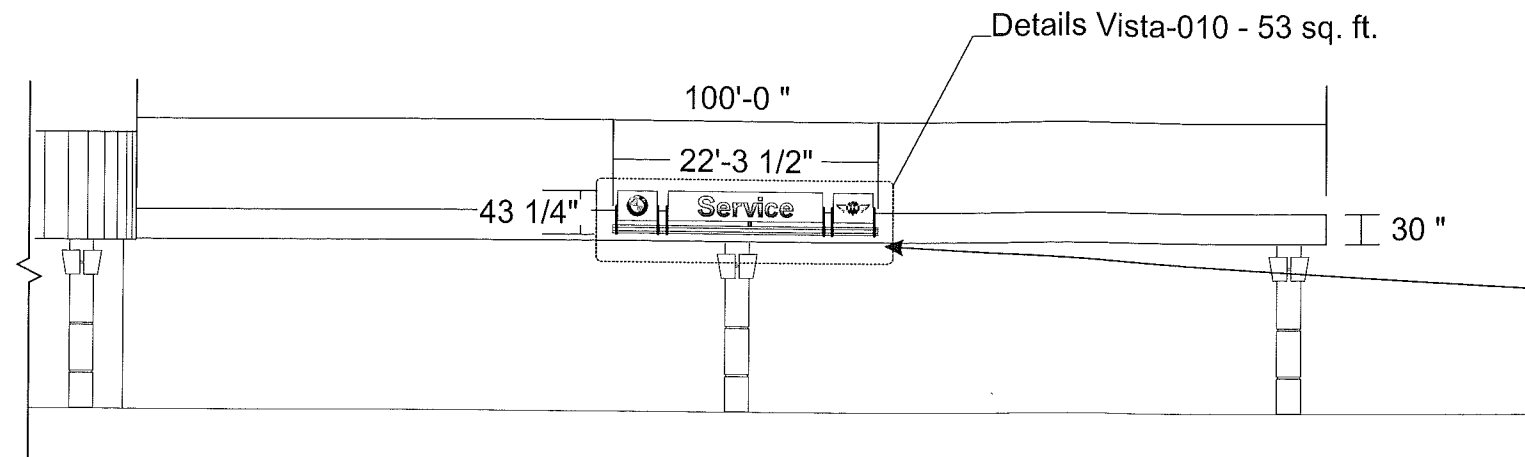
West Elevation: "Pre-Owned" letters with BMW logo.

Scale: 1/16"=1'0"



CLIENT:	VISTA BMW
LOCATION:	COCONUT CREEK
DATE:	8-26-02
DRAWING #	VISTA-004
APPRVD. BY:	Checked By:
DRAWN BY:	DEA

THIS DESIGN IS SUBMITTED AS PART OF OUR PROPOSAL AND IS TO REMAIN OUR PROPERTY EXCLUSIVELY UNTIL ACCEPTED AND APPROVED BY PURCHASE.

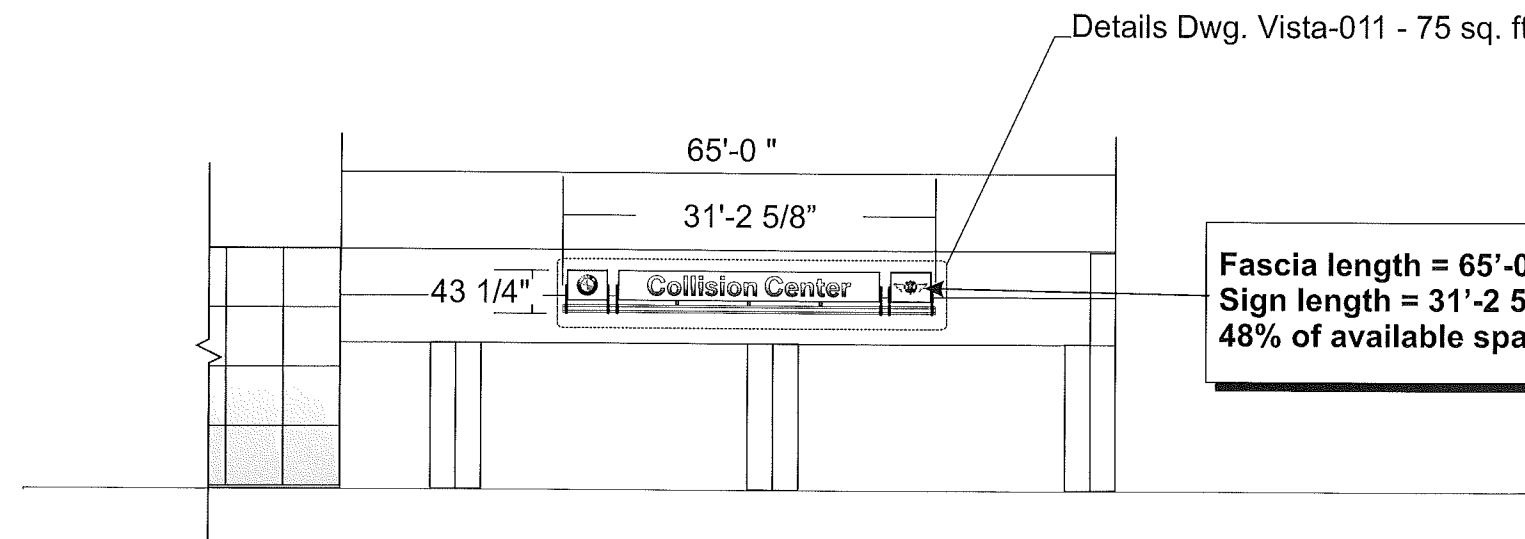


Fascia length = 100'-0"
 Sign length = 22'-3 1/2" or
 22% of available space

9.9 amps @ 120v

South Elevation: "Service" with 2 logos

Scale: 1/16"=1'0"



Fascia length = 65'-0"
 Sign length = 31'-2 5/8" or
 48% of available space

12.7 amps @ 120v

South Elevation: "Collision Center" with 2 logos

Scale: 1/16"=1'0"



**United
 Sign
 Systems**
 PH. 888-704-1516

CLIENT:	VISTA BMW
LOCATION:	COCONUT CREEK
DATE:	8-26-02
DRAWING #	VISTA-005
APPRVD. BY:	Checked By:
DRAWN BY:	DEA

THIS DESIGN IS SUBMITTED AS PART OF OUR PROPOSAL AND IS TO REMAIN OUR PROPERTY EXCLUSIVELY UNTIL ACCEPTED AND APPROVED BY PURCHASE.

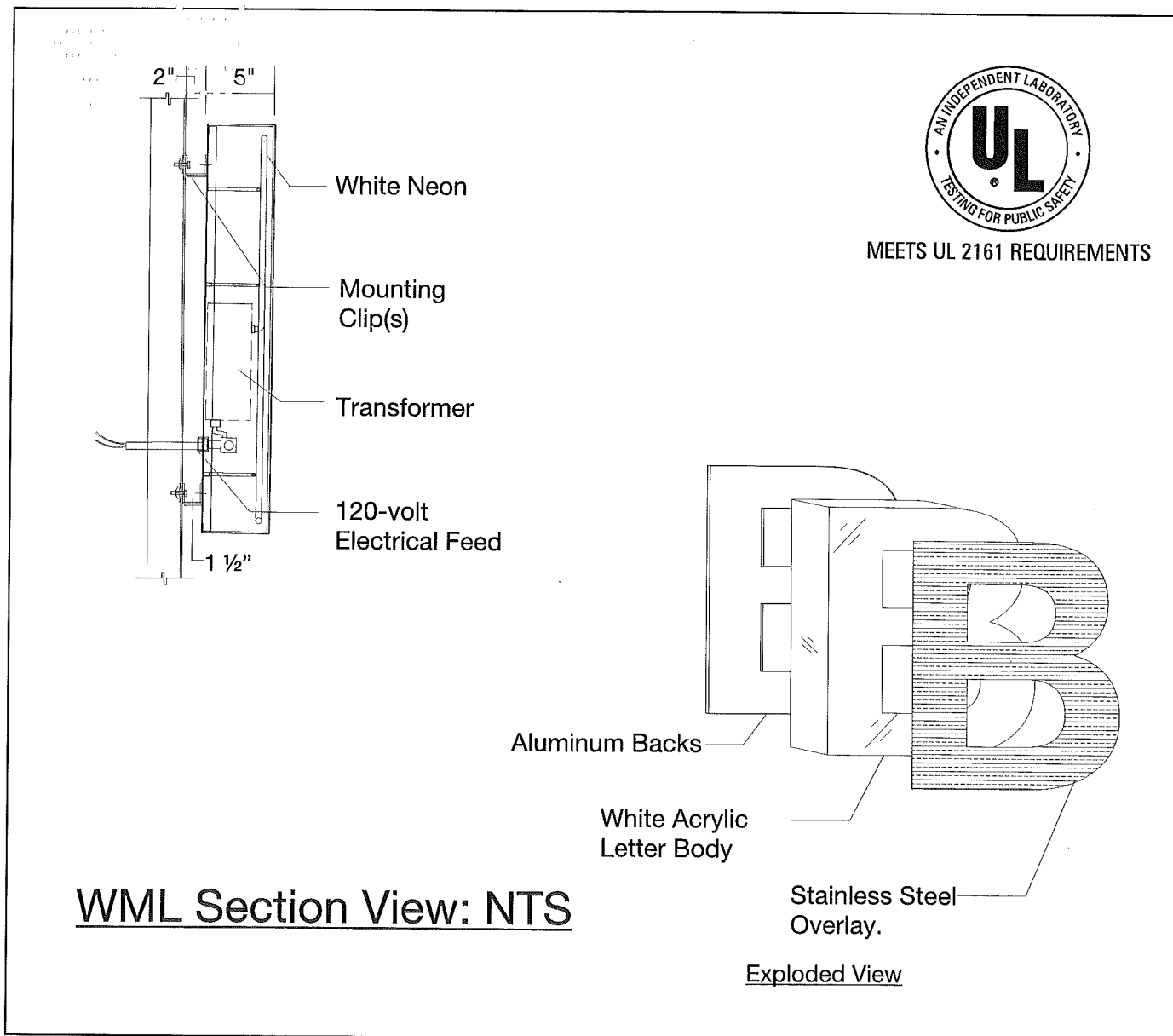
21'-6"

Vista BMW

36"

Elevation:

Scale 1/2" = 1'0"



8 letters @ 1.35a = 10.8amps @ 120v
64 1/2 SQ FT. TOTAL

FABRICATION / ASSEMBLY NOTES

WML (Wall Mounted Lettering) matches old-style BMW wall mounted lettering, except the new CID font is used. These letters are used in the event that standard CNM modules are impossible due to building conditions or local codes.

Interior neon illumination, primary 120v feed (1.35 a) required for each letter.

GRAPHIC COLORS

G1 #8 POLISHED SS OVERLAY
G2 WHITE UVEX

ELECTRICAL SPECIFICATIONS

BALLASTS TRANSFORMERS

QTY	DESCRIPTION

NEON LAMPS

QTY/FOOTAGE	SIZE / DESCRIPTION

VOLTAGE: 120V 277V _____

SPECIAL REQUIREMENTS

PURCHASING/ BOM

QTY	DESCRIPTION

NON STOCK ITEMS

QTY	VENDOR	DESCRIPTION

MISC NOTES:

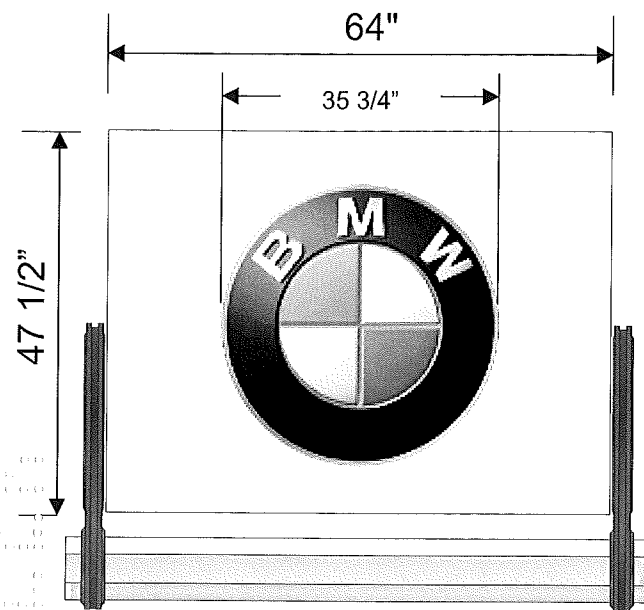
THIS DRAWING IS THE PROPERTY OF UNITED SIGN SYSTEMS. ALL RIGHTS TO ITS USE FOR REPRODUCTION ARE RESERVED BY U.S.S. OF TAMPA, FL

DATE	5-7-02	STATE		REV #		DESCRIPTION	DATE
CITY	X	SALES REP.	RH	APPROVED BY:		DATE	
CLIENT	BMW MINI	SHEET	1 OF 1	DRAWN BY:	DEA	DATE	
INSTALLATION ADDRESS	X	JOB NUMBER	X	CHECKED BY:		DATE	
TITLE	X						

205 Tower Drive
 Oldsmar, FL 34677
 PH. 888-704-1516

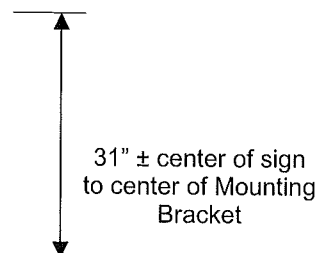
United Sign Systems

Drawing #
Vista-006

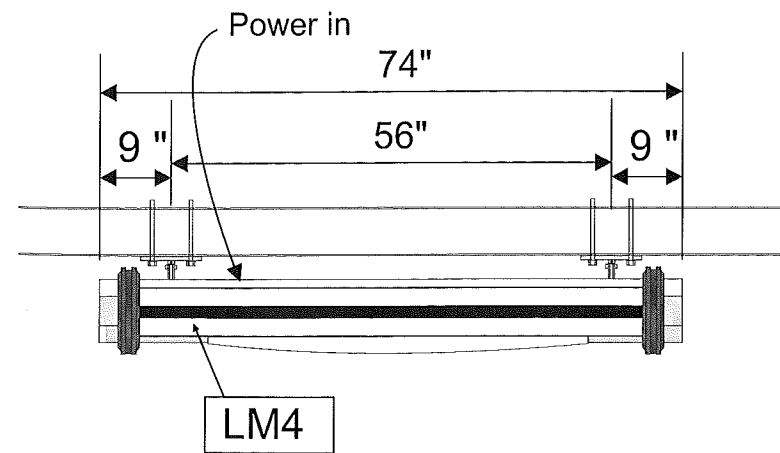


QTY: 1

Facade: Elevation: Scale 1/2" = 1'0"

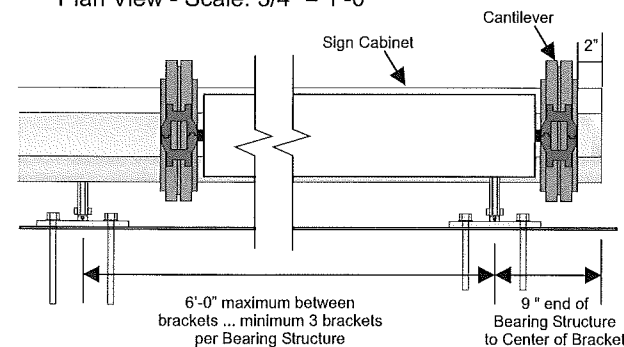


21 SQ. FT



Plan View: Scale 1/2" = 1'0"

Bearing Structure Mounting Detail:
Plan View - Scale: 3/4" = 1'-0"

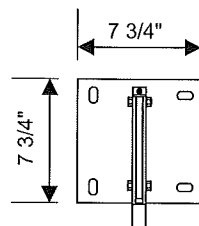


FABRICATION / ASSEMBLY NOTES

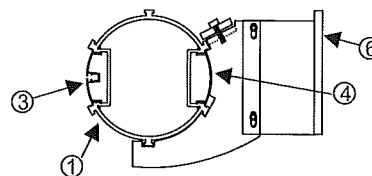
Sign modules are fabricated from .090 aluminum faces painted BMW approved white. Internally illuminated routed faces. Lettering is formed acrylic push-through lettering with stainless steel faces. Logo modules are identical to pylon modules.

- ① 200 mm pole - bearing structure. Length as required (2" past outside cantilevers, typ.)
- ② Cantilever supports at each end of facade module (36" ±)
- ③ LED insert strip on front of bearing structure (typ)
- ④ Blank insert strip on building side of bearing structure (typ)
- ⑤ End cap (typ)
- ⑥ Wall brackets: spaced no further than 6'-0" as required for overall length. Minimum three required per bearing structure.
- ⑦ Middle support brackets: on modules longer than 10 feet, brackets add stability to sign structure. Spaced 3'-0" on center for CNM4.

Electrical requirements: vary with length of copy. Most signs will not exceed one 20 a circuit.



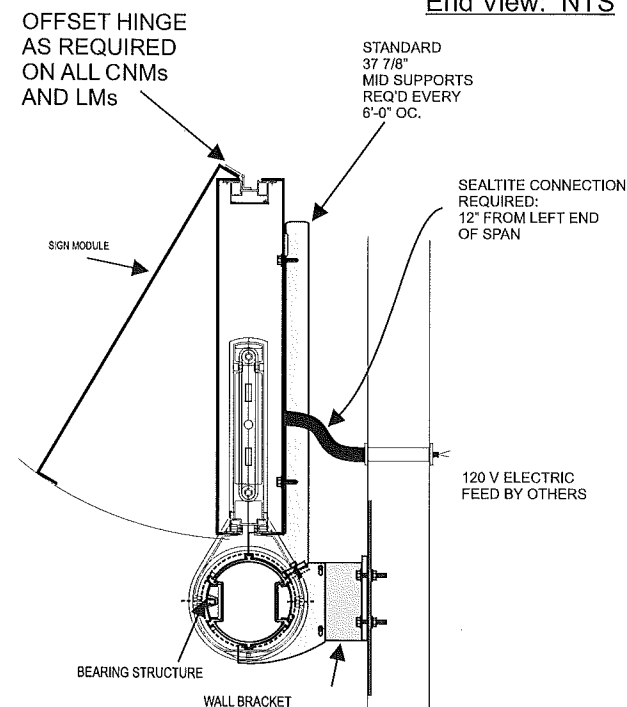
Face view of wall bracket



End view at Wall Bracket (every 6'-0" typ)

Wall Bracket: Scale 1" = 1'0"

End View: NTS



GRAPHIC COLORS

- G1** BMW F1 CHARCOAL
- G2** BMW WHITE
- G3** ANODIZED SILVER

ELECTRICAL SPECIFICATIONS

- BALLASTS TRANSFORMERS

QTY	DESCRIPTION
1	ASB 1224-24 PER CABINET (2.8A)

- NEON LAMPS

QTY/FOOTAGE	SIZE / DESCRIPTION
3	60" LAMPS PER CABINET

VOLTAGE: 120V 277V

SPECIAL REQUIREMENTS

PURCHASING/ BOM

QTY	DESCRIPTION

NON STOCK ITEMS

QTY	VENDOR	DESCRIPTION

MISC NOTES:

THIS DRAWING IS THE PROPERTY OF UNITED SIGN SYSTEMS. ALL RIGHTS TO ITS USE FOR REPRODUCTION ARE RESERVED BY U.S.S. OF TAMPA, FL

REV #	DESCRIPTION	DATE	BY

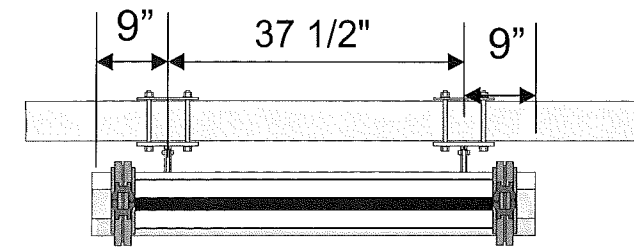
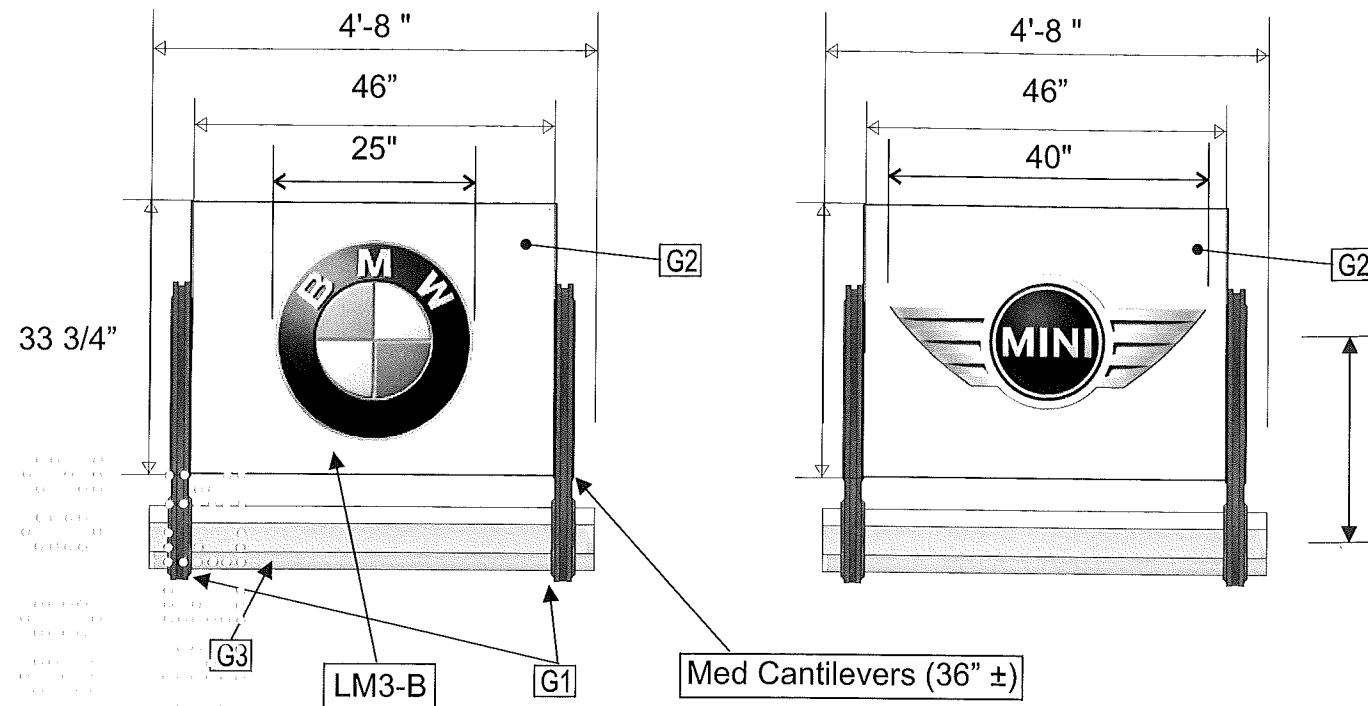
DATE	8/22/02	STATE	FL
CITY	COCONUT CREEK	SALES REP.	RH
SCALE	NOTED	DRAWN BY:	DEA
SHEET	1 OF 1	APPROVED BY:	
JOB NUMBER	X	TITLE	X
CHECKED BY:		DATE	

CLIENT: VISTA BMW
 INSTALLATION ADDRESS: X
 JOB NUMBER: X
 TITLE: X
 CHECKED BY: X
 DATE:

205 Tower Drive
 Oldsmar, FL 34677
 PH. 888-704-1516

United Sign Systems

VISTA-008



Plan View: Scale 1/2" = 1'0"

Facade: Elevation: Scale 1/2" = 1'0"

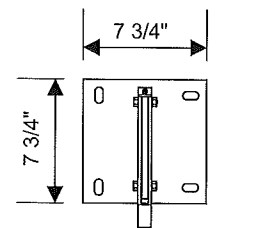
11 SQ. FT EACH

FABRICATION / ASSEMBLY NOTES

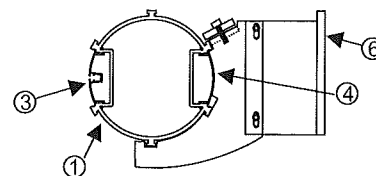
Sign modules are fabricated from .090 aluminum faces painted BMW approved white. Internally illuminated routed faces. Lettering is formed acrylic push-through lettering with stainless steel faces. Logo modules are identical to pylon modules.

- ① 200 mm pole - bearing structure. Length as required (2" past outside cantilevers, typ.)
- ② Cantilever supports at each end of facade module (36" ±)
- ③ LED insert strip on front of bearing structure (typ)
- ④ Blank insert strip on building side of bearing structure (typ)
- ⑤ End cap (typ)
- ⑥ Wall brackets: spaced no further than 6'-0" as required for overall length. Minimum three required per bearing structure.
- ⑦ Middle support brackets: on modules longer than 10 feet, brackets add stability to sign structure. Spaced 3'-0" on center for CNM4.

Electrical requirements: vary with length of copy. Most signs will not exceed one 20 a circuit.

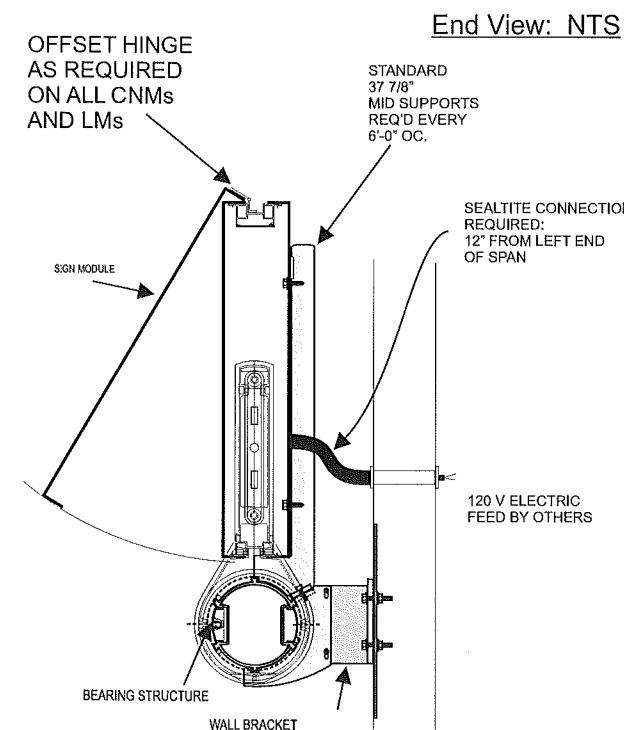
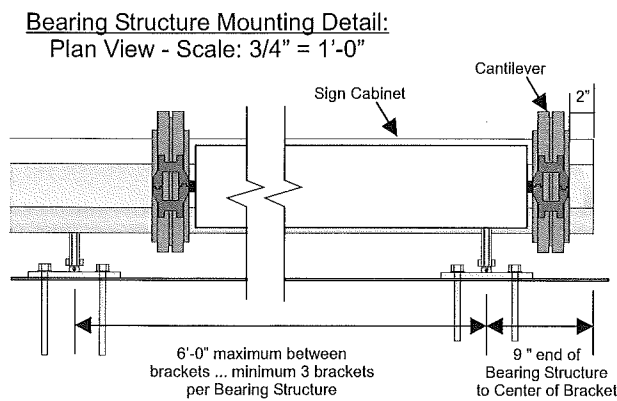


Face view of wall bracket



End view at Wall Bracket (every 6'-0" typ)

Wall Bracket: Scale 1" = 1'0"



GRAPHIC COLORS	
G1	BMW F1 CHARCOAL
G2	BMW WHITE
G3	ANODIZED SILVER

ELECTRICAL SPECIFICATIONS	
<input checked="" type="checkbox"/> BALLASTS	<input type="checkbox"/> TRANSFORMERS
QTY	DESCRIPTION
1	ASB 1224-24 PER CABINET (2.8A)
<input type="checkbox"/> NEON	<input checked="" type="checkbox"/> LAMPS
QTY/FOOTAGE	SIZE / DESCRIPTION
3	60" LAMPS PER CABINET
VOLTAGE: <input checked="" type="checkbox"/> 120V <input type="checkbox"/> 277V <input type="checkbox"/> _____	

PURCHASING/ BOM	
QTY	DESCRIPTION

NON STOCK ITEMS		
QTY	VENDOR	DESCRIPTION

MISC NOTES:

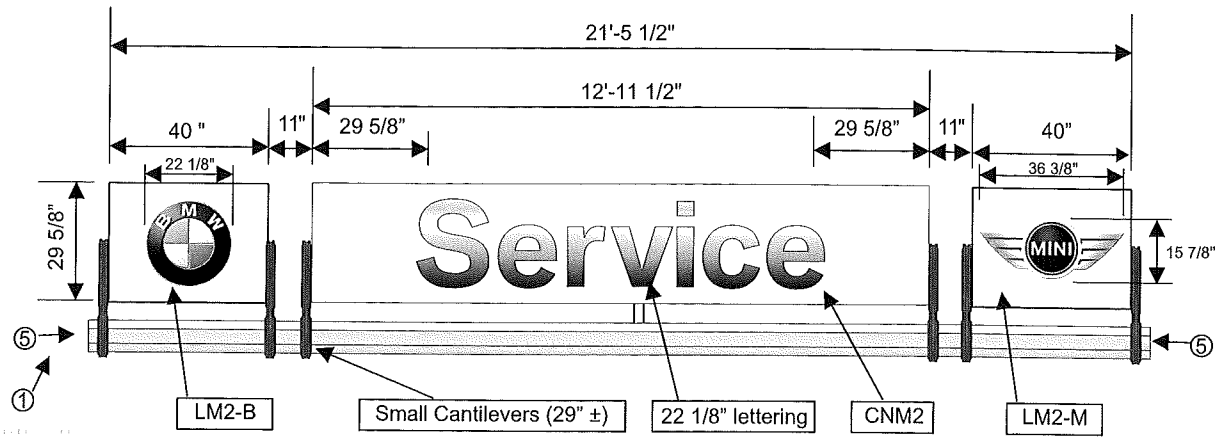
THIS DRAWING IS THE PROPERTY OF UNITED SIGN SYSTEMS. ALL RIGHTS TO ITS USE FOR REPRODUCTION ARE RESERVED BY U.S.S. OF TAMPA, FL

DATE	8/22/02	STATE	FL
CITY	COCONUT CREEK	SALES REP.	RH
CHECKED BY:		DATE	
CLIENT	VISTA BMW	INSTALLATION ADDRESS	X
JOB NUMBER	X	SHEET	1 OF 1
TITLE	X	DRAWN BY:	DEA
CHECKED BY:		DATE	
REV#		DESCRIPTION	

205 Tower Drive
Oldsmar, FL 34677
PH. 888-704-1516

United Sign Systems

VISTA-009



CNM2 - Facade Sign Elevation: Scale 1/4" = 1'0"

(Bearing Structure length as required - 2" past end of outside cantilevers).

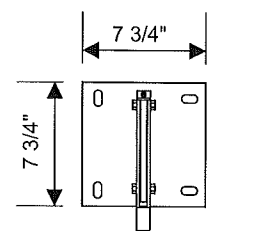
53 SQ. FT

FABRICATION / ASSEMBLY NOTES

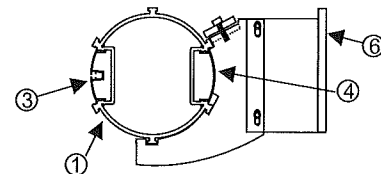
Sign modules are fabricated from .090 aluminum faces painted BMW approved white. Internally illuminated routed faces. Lettering is formed acrylic push-through lettering with stainless steel faces. Logo modules are identical to pylon modules.

- ① 200 mm pole - bearing structure. Length as required (2" past outside cantilevers, typ.)
- ② Cantilever supports at each end of facade module (29" ±)
- ③ LED insert strip on front of bearing structure (typ)
- ④ Blank insert strip on building side of bearing structure (typ)
- ⑤ End cap (typ)
- ⑥ Wall brackets: spaced no further than 8'-0" as required for overall length. Minimum three required per bearing structure.
- ⑦ Middle support brackets: on modules longer than 10 feet, brackets add stability to sign structure. Spaced 6'-0" on center (CNM1-3) and 3'-0" on center for CNM4.

Electrical requirements: vary with length of copy. Most signs will not exceed one 20 a circuit.

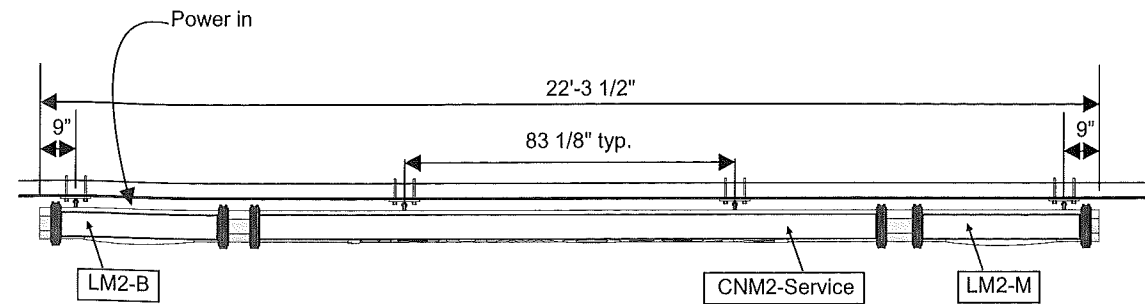


Face view of wall bracket



End view at Wall Bracket (every 8'-0" typ)

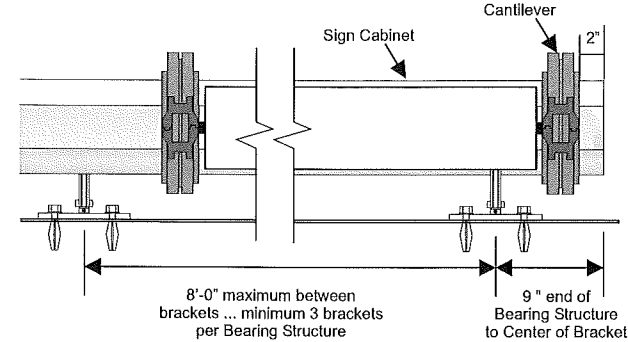
Wall Bracket: Scale 1" = 1'0"



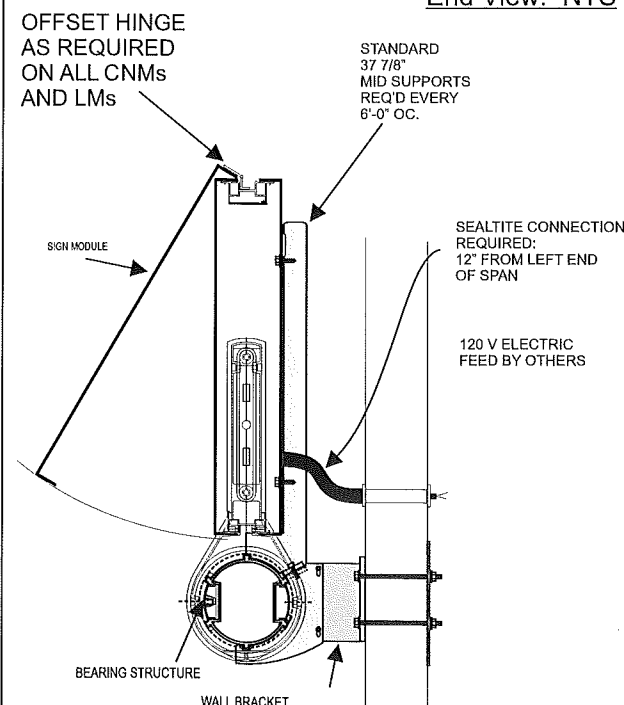
Plan View: Scale 1/4" = 1'0"

Showing Bracket Locations

Bearing Structure Mounting Detail:
Plan View - Scale: 3/4" = 1'-0"



End View: NTS



GRAPHIC COLORS

- G1 BMW F-1 CHARCOAL
- G2 BMW WHITE
- G3 CLEAR ANODIZED ALUMINUM

ELECTRICAL SPECIFICATIONS

- BALLASTS TRANSFORMERS

QTY	DESCRIPTION
2	0620-24 = 2.5a each
1	1240-46 = 3.9a each

- NEON LAMPS

QTY/FOOTAGE	SIZE / DESCRIPTION
6	36" FL-12
3	72" FL-12

VOLTAGE: 120V 277V

SPECIAL REQUIREMENTS

PURCHASING/ BOM

QTY	DESCRIPTION

NON STOCK ITEMS

QTY	VENDOR	DESCRIPTION

MISC NOTES:

THIS DRAWING IS THE PROPERTY OF UNITED SIGN SYSTEMS. ALL RIGHTS TO ITS USE FOR REPRODUCTION ARE RESERVED BY U.S.S. OF TAMPA, FL

REV #	DESCRIPTION	DATE	BY

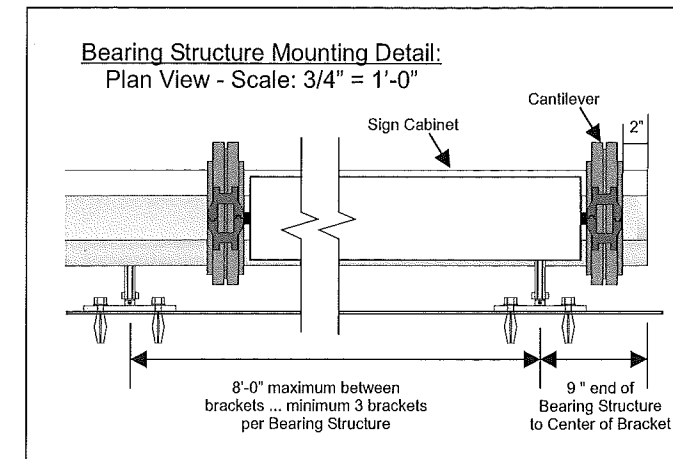
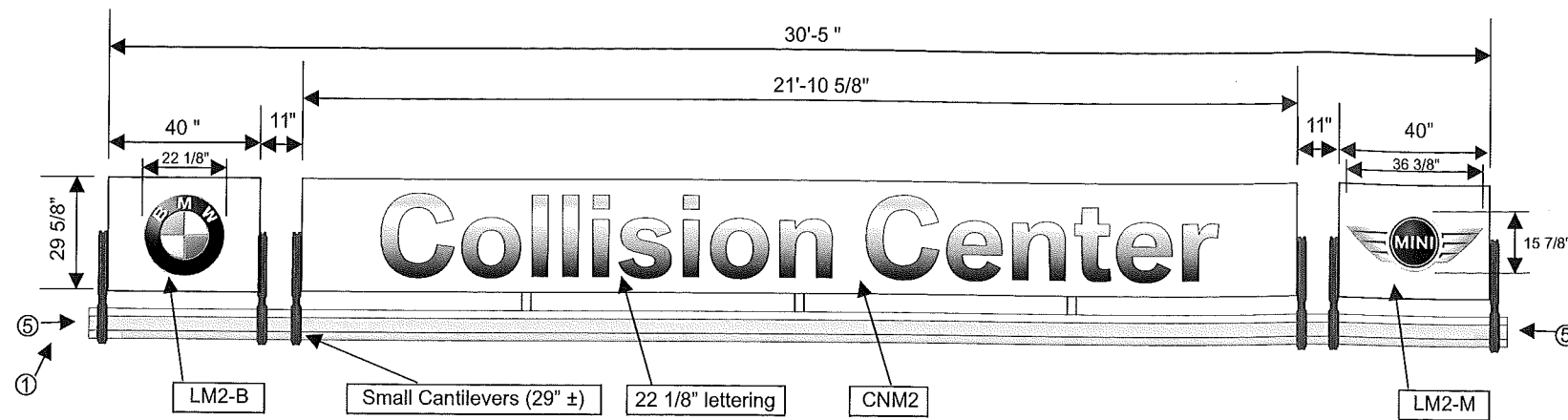
DATE	8/5/02
STATE	FL
CITY	COCONUT CREEK
SALES REP.	SH
SCALE	NOTED
DRAWN BY:	DEA
APPROVED BY:	
DATE	

CLIENT VISTA MOTORS
 INSTALLATION ADDRESS X
 JOB NUMBER X
 SHEET 1 OF
 TITLE: X
 CHECKED BY: X
 DATE

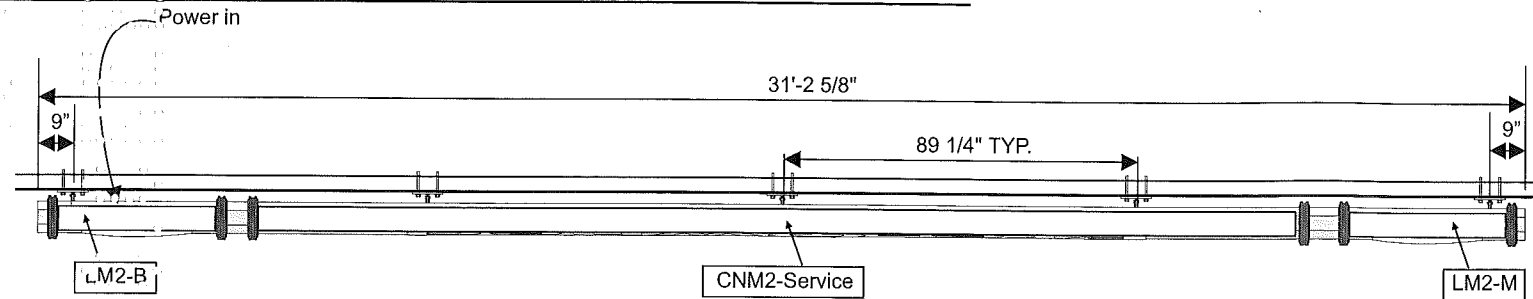
205 Tower Drive
 Oldsmar, FL 34677
 PH. 888-704-1516

United Sign Systems

VISTA-010



CNM2 - Facade Sign Elevation: Scale 1/4" = 1'0"



75 SQ. FT

Plan View: Scale 1/4" = 1'0"

Showing Bracket Locations

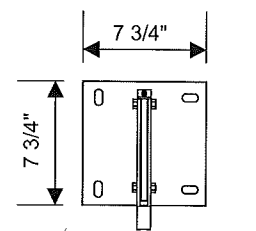
GRAPHIC COLORS	
G1	BMW F-1 CHARCOAL
G2	BMW WHITE
G3	CLEAR ANODIZED ALUMINUM
ELECTRICAL SPECIFICATIONS	
<input checked="" type="checkbox"/>	BALLASTS
<input type="checkbox"/>	TRANSFORMERS
<input type="checkbox"/>	NEON
<input checked="" type="checkbox"/>	LAMPS
QTY/FOOTAGE	SIZE / DESCRIPTION
2	0620-24 = 2.5a each
1	1224-24 = 2.8a each
1	1240-46 = 3.9a each
VOLTAGE: <input checked="" type="checkbox"/> 120V <input type="checkbox"/> 277V <input type="checkbox"/>	
SPECIAL REQUIREMENTS	

FABRICATION / ASSEMBLY NOTES

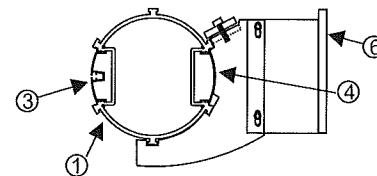
Sign modules are fabricated from .090 aluminum faces painted BMW approved white. Internally illuminated routed faces. Lettering is formed acrylic push-through lettering with stainless steel faces. Logo modules are identical to pylon modules.

- ① 200 mm pole - bearing structure. Length as required (2" past outside cantilevers, typ.)
- ② Cantilever supports at each end of facade module (29" ±)
- ③ LED insert strip on front of bearing structure (typ)
- ④ Blank insert strip on building side of bearing structure (typ)
- ⑤ End cap (typ)
- ⑥ Wall brackets: spaced no further than 8'-0" as required for overall length. Minimum three required per bearing structure.
- ⑦ Middle support brackets: on modules longer than 10 feet, brackets add stability to sign structure. Spaced 6'-0" on center (CNM1-3) and 3'-0" on center for CNM4.

Electrical requirements: vary with length of copy. Most signs will not exceed one 20 a circuit.

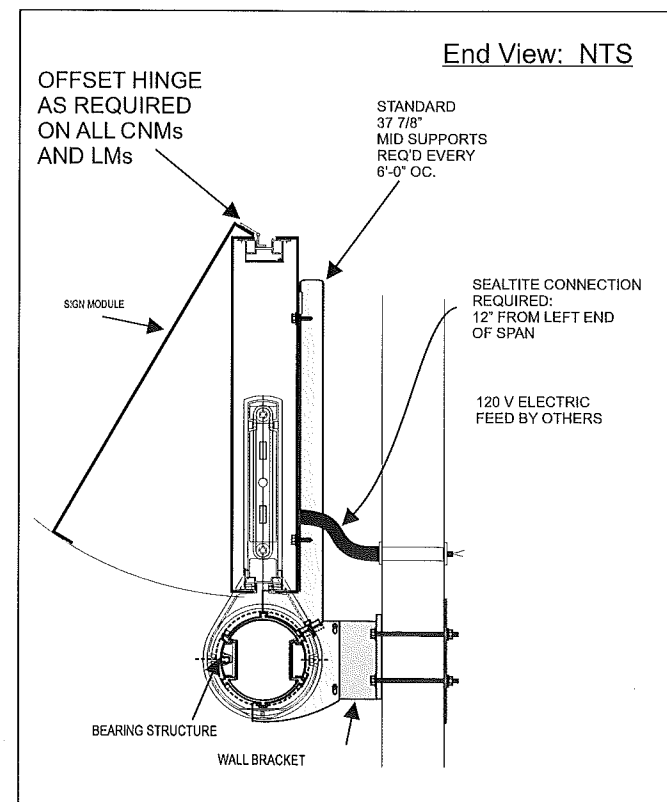


Face view of wall bracket



End view at Wall Bracket (every 8'-0" typ)

Wall Bracket: Scale 1" = 1'0"



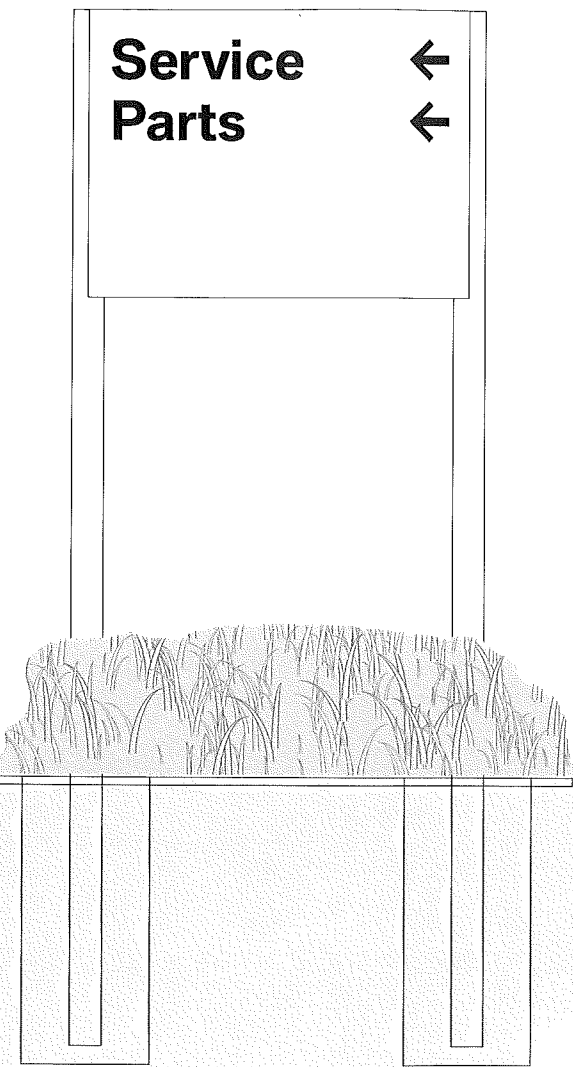
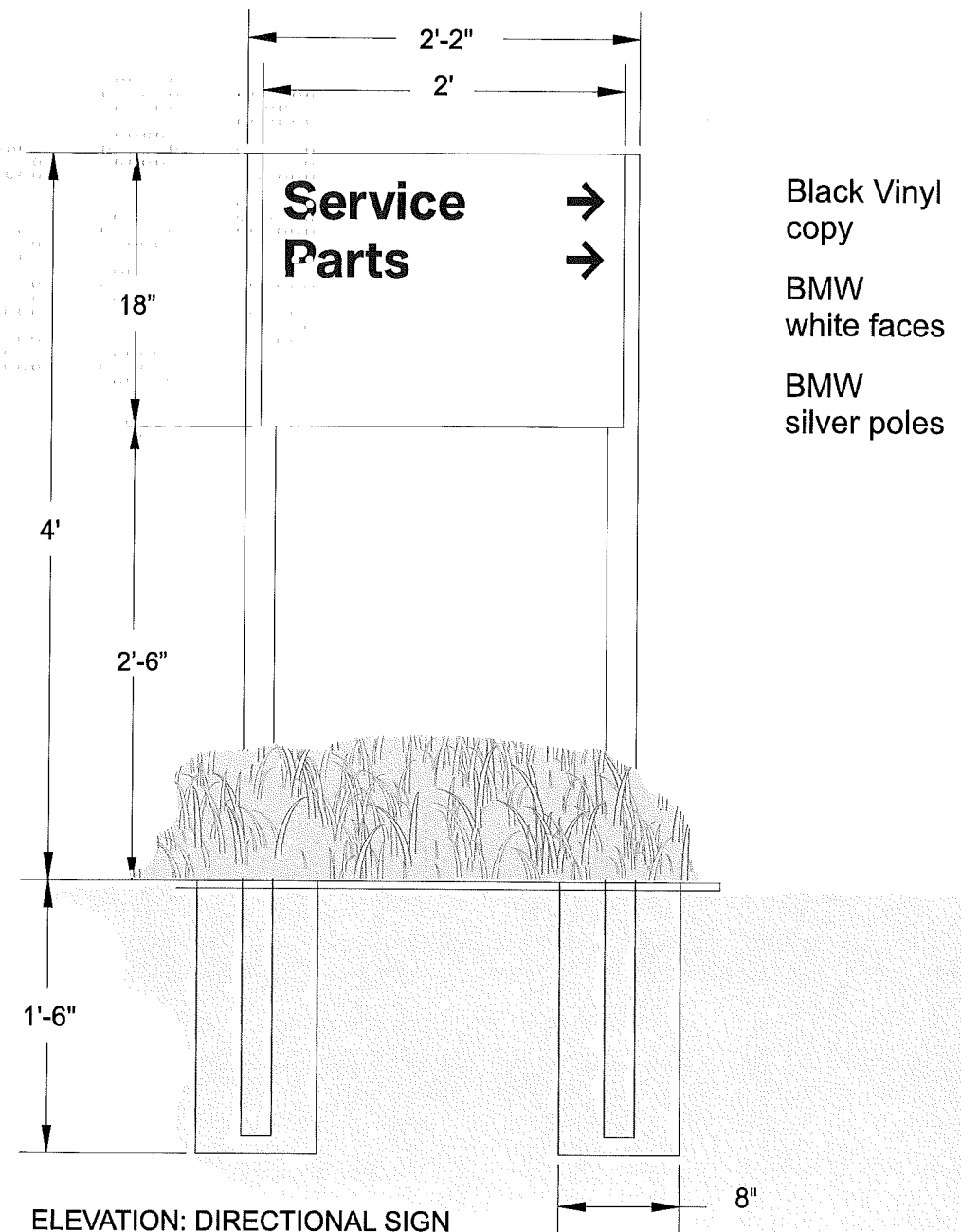
DATE	8/5/02	STATE	FL
CITY	COCONUT CREEK	SALES REP.	SH
SCALE	NOTED	DRAWN BY:	DEA
SHEET	1 OF	APPROVED BY:	
JOB NUMBER	X	CHECKED BY:	
TITLE	X	DATE	
CLIENT	VISTA MOTORS	DESCRIPTION	
INSTALLATION ADDRESS	X	REV#	
<p>205 Tower Drive Oldsmar, FL 34677 PH. 888-704-1516</p>			
<p>United Sign Systems</p>			
<p>VISTA-011</p>			

THIS DRAWING IS THE PROPERTY OF UNITED SIGN SYSTEMS. ALL RIGHTS TO ITS USE FOR REPRODUCTION ARE RESERVED BY U.S.S. OF TAMPA, FL

COPY TYPICAL: DEALER TO PROVIDE
ACTUAL COPY PRIOR TO FABRICATION

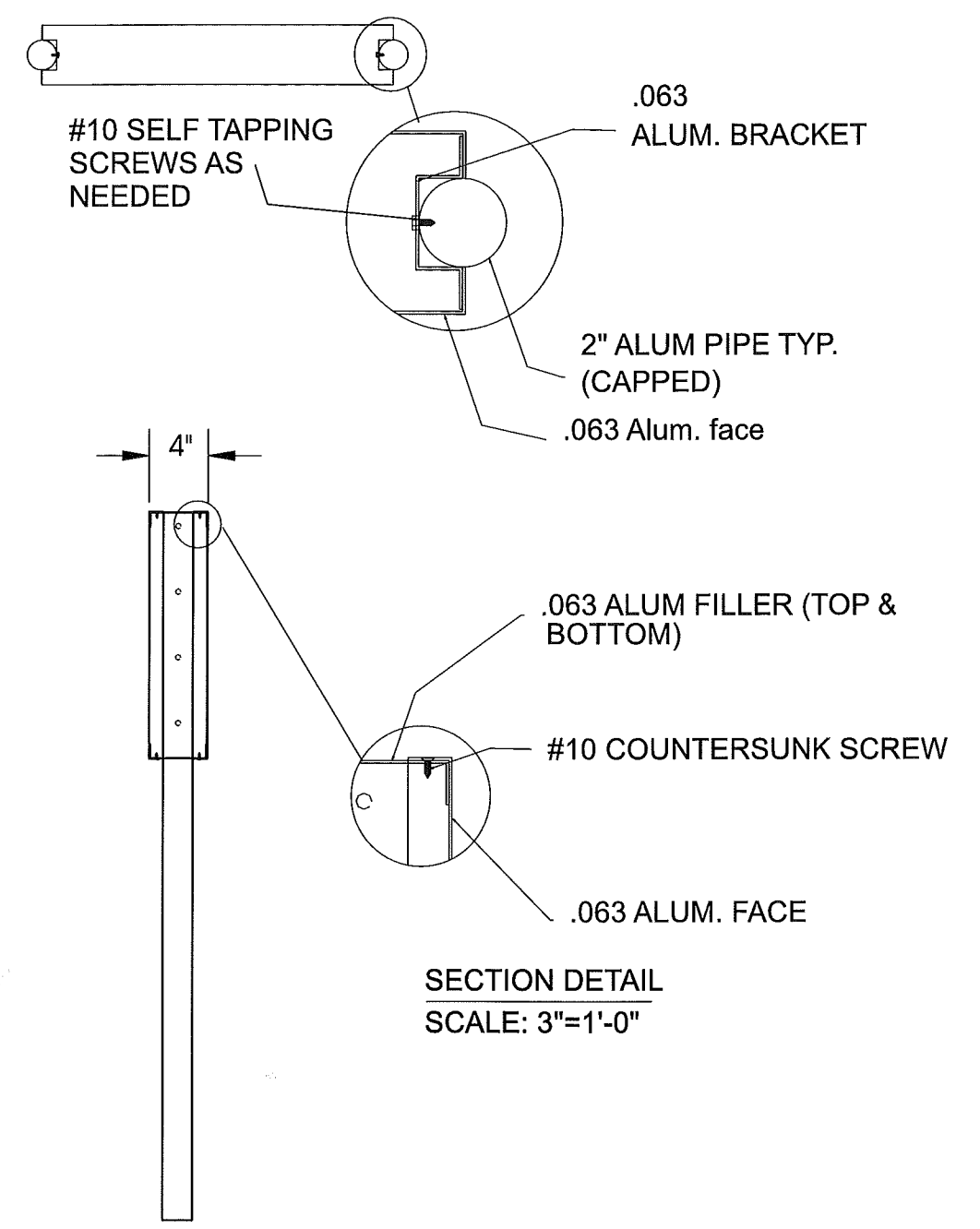
SIDE A

SIDE B



Black Vinyl
copy
BMW
white faces
BMW
silver poles

ELEVATION: DIRECTIONAL SIGN
SCALE: 1"=1'-0"



SECTION VIEW

SECTION DETAIL
SCALE: 3"=1'-0"

DIRECTIONALS #1,3,4,5,6,7,8

United Sign Systems
PH. 888-704-1516

CLIENT:	BMW
LOCATION:	Coconut Creek, FL
DATE:	8-22-02
DRAWING #	Vista-012
APPRVD. BY:	Checked By:
DRAWN BY:	DEA

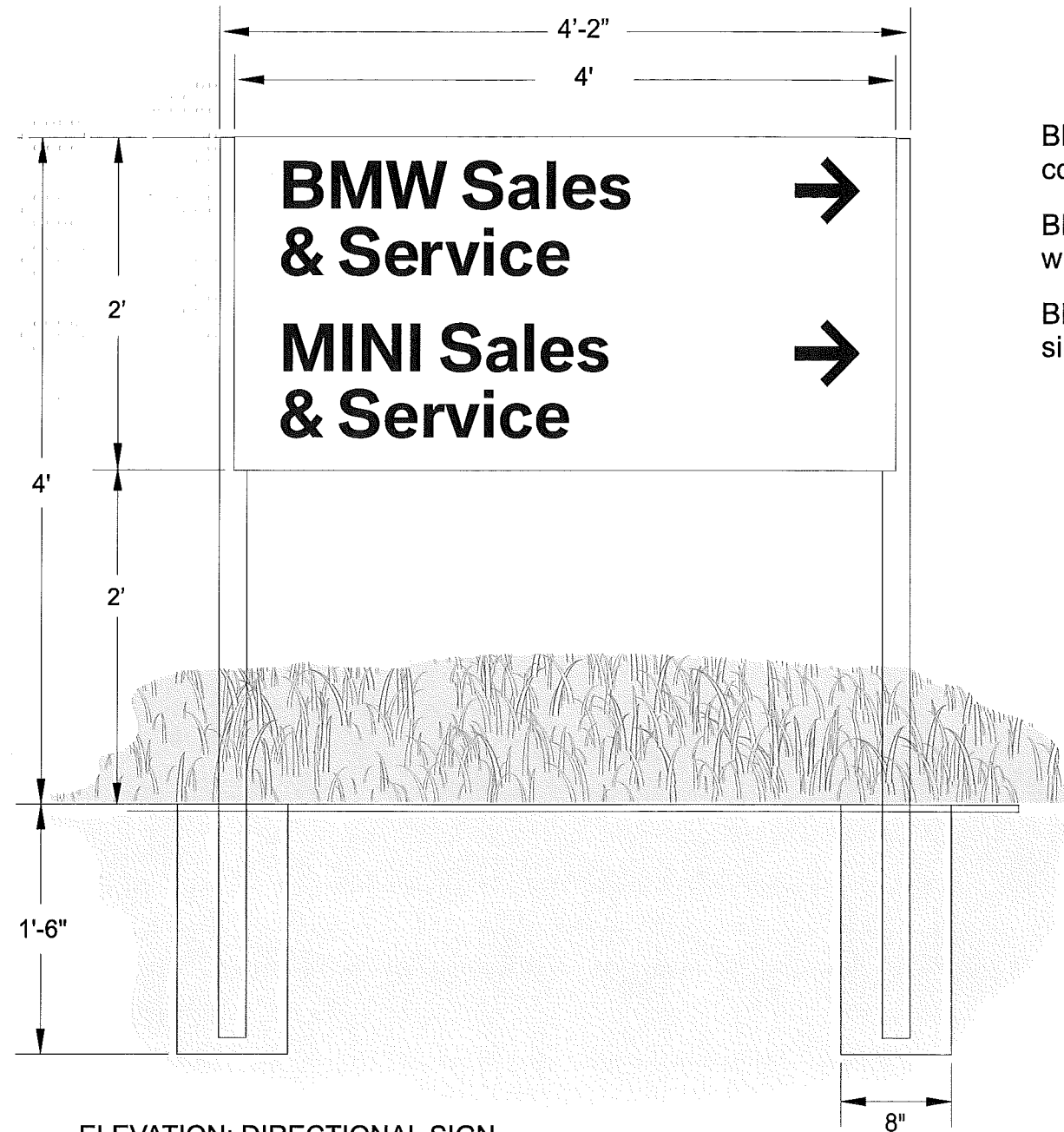
THIS DESIGN IS SUBMITTED AS PART OF OUR PROPOSAL AND IS TO REMAIN OUR PROPERTY EXCLUSIVELY UNTIL ACCEPTED AND APPROVED BY PURCHASE.

COPY TYPICAL: DEALER TO PROVIDE
ACTUAL COPY PRIOR TO FABRICATION

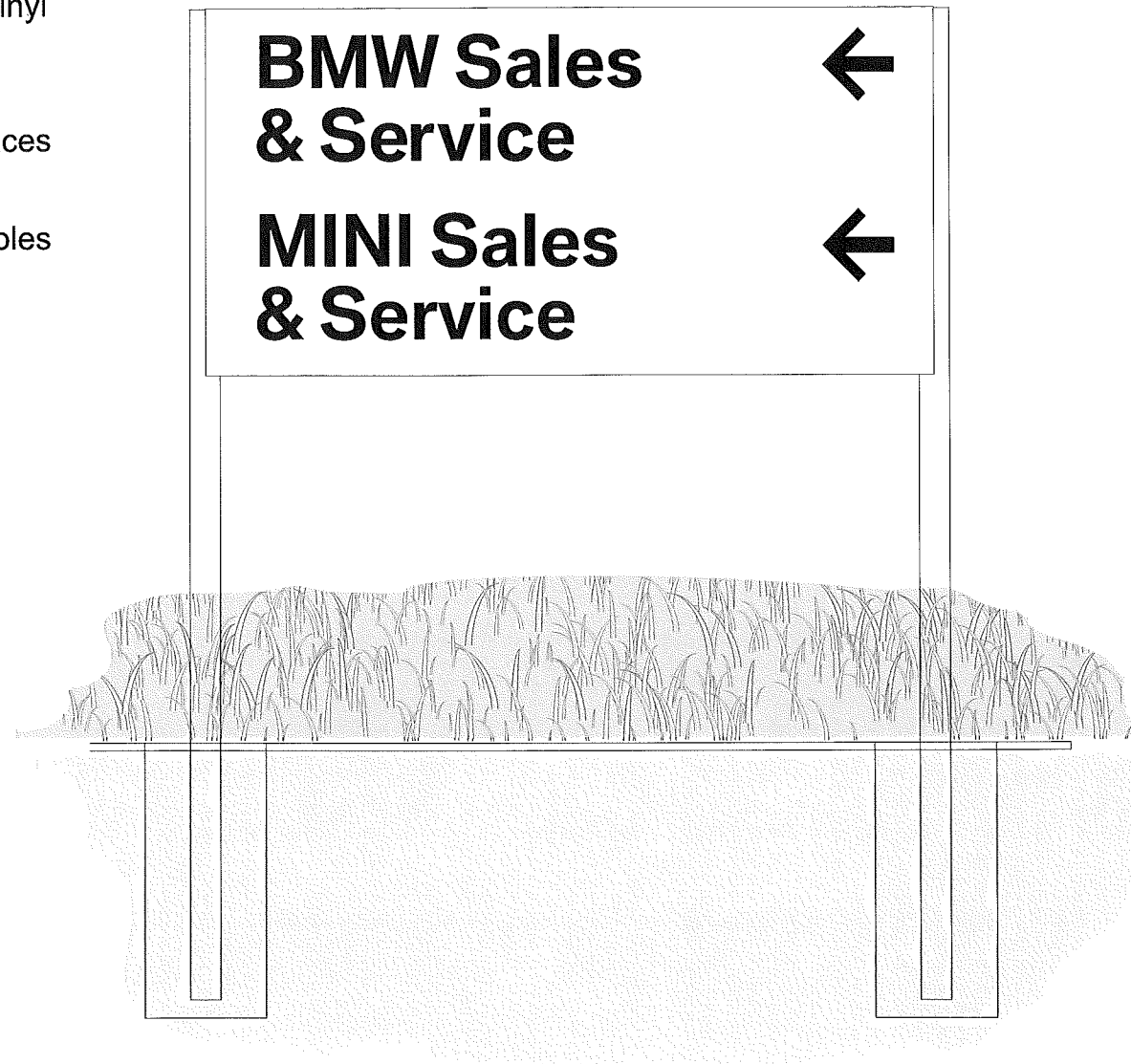
CONSTRUCTION DETAILS:
REFER TO VISTA-012

SIDE A

SIDE B



Black Vinyl
copy
BMW
white faces
BMW
silver poles



ELEVATION: DIRECTIONAL SIGN
SCALE: 1"=1'-0"

DIRECTIONAL #2

 **United
Sign
Systems**
PH. 888-704-1516

CLIENT:	BMW
LOCATION:	Coconut Creek, FL
DATE:	9-12-02
DRAWING #	Vista-013
APPRVD. BY:	Checked By:
DRAWN BY:	DEA

THIS DESIGN IS SUBMITTED AS PART OF OUR PROPOSAL AND IS TO REMAIN
OUR PROPERTY EXCLUSIVELY UNTIL ACCEPTED AND APPROVED BY PURCHASE.