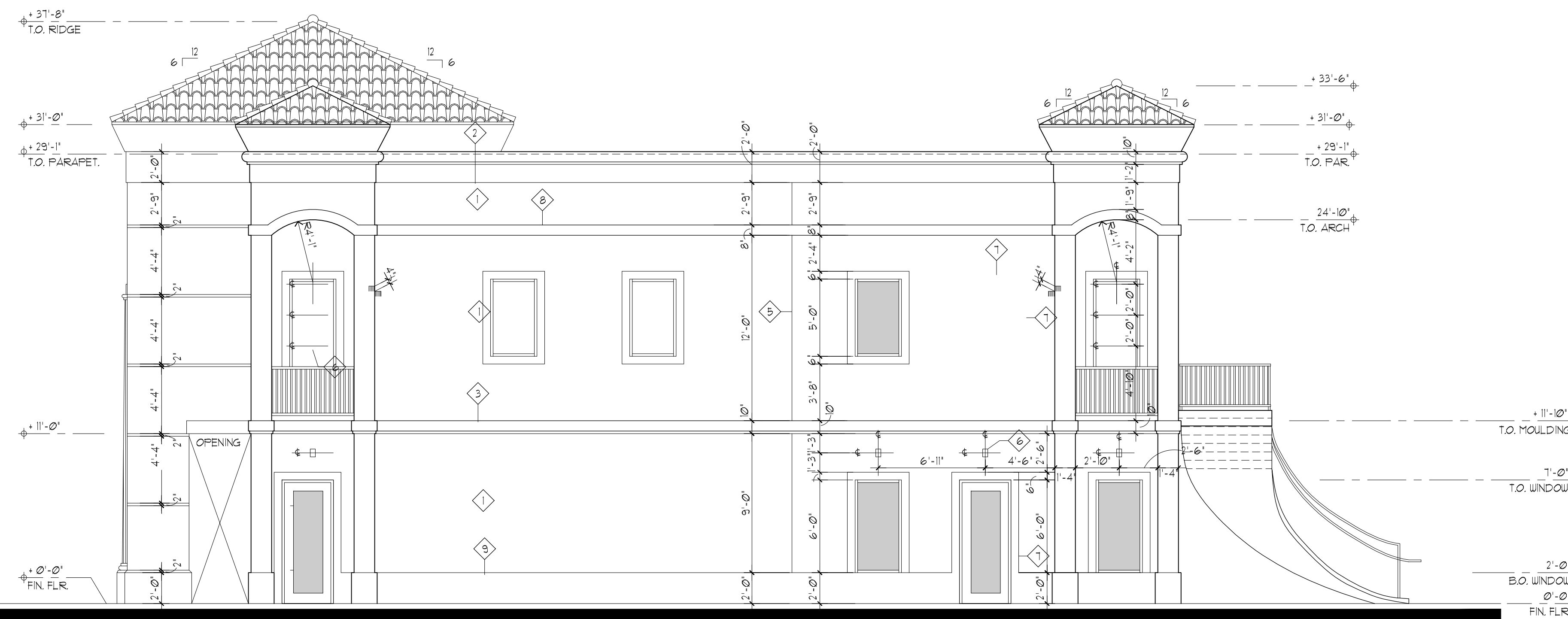


Proposed Right Elevation 3/16"



Proposed Left Elevation 3/16"

KEYED CONSTRUCTION NOTES

- 1 MEDIUM TEXTURE STUCCO FINISH (TYPICAL)
- 2 PREFAB. STYROFOAM DECORATIVE MOLDING. SEE DETAIL 10 ON SHT A-6, SEE NOTE THIS SHT
- 3 2' X 10' PREFAB. STYROFOAM DECORATIVE MOLDING. SEE DETAILS ON SHT A-6
- 4 2' PVC REVEAL. SEE DETAIL 8 ON SHT A-6
- 5 1' PVC REVEAL. SEE DETAIL 3 ON SHT A-6
- 6 4' X 6' DECORATIVE RECESSED STUCCO REVEAL. SEE DETAIL 4 ON SHT A-6
- 7 6' X 3/4" RAISED STUCCO BAND. SEE DETAIL ON SHT A-6
- 8 8' X 3/4" RAISED STUCCO BAND. SEE DETAIL 3 ON SHT A-6
- 9 24' X 2' RAISED STUCCO BAND
- 10 EMERGENCY OVERFLOW SCUPPER. SEE SHT A-3
- 11 STEEL CAGE ROOF LADDER. SEE DETAIL 6 ON SHT A-3
- 12 SPANISH 5' BARREL TILE ROOF (AS SELECTED BY OWNER) OVER BUILT-UP ROOF OVER 5/8" EXTERIOR GRADE SHEATHING PLYWOOD OVER PRE-FAB WOOD TRUSSES @ 24' O.C.
- 13 STEEL COLUMNS INSIDE DECORATIVE COLUMNS. SEE STRUCT DUGS
- 14 IMITATION KEYSTONE DECORATIVE COLUMNS CONSISTING OF PEDISTAL, BASE, SHAFT AND CAPITAL. SEE DETAIL 6, SHT A-6.1 COORDINATE W/ OWNER

GLAZING AND STOREFRONT NOTES:

1. ALL EXTERIOR GLASS PANELS (WINDOWS AND DOORS FOR ENTIRE BUILDING) SHALL BE GREY TINTED IMPACT RESISTANT GLASS ON IMPACT RESISTANT WHITE ESP ALUM. FRAMES (SERIES 3000) AS MFG. BY ARCH. ALUMINUM OR APPROVED EQUAL. SUBMIT SHOP DUGS. FOR REVIEW AND APPROVAL. ASSEMBLY TO COMPLY W/ PRODUCT APPROVAL.
2. CONTRACTOR SHALL TAKE EXTREME CARE NOT TO SCRATCH OR DAMAGE GLASS OR FRAMES.
3. CONTRACTOR SHALL PROPERLY CAULK PERIMETER OF ALL STOREFRONT PANELS WITH WHITE ACRYLIC CAULK.
4. ALL STOREFRONT FRAMES AND GLASS SHALL COMPLY WITH PRODUCT CONTROL REQUIREMENTS AND APPROVALS. SUBMIT SHOP DRAWINGS FOR REVIEW.
5. ALL STOREFRONT FRAMES SHALL BE SECURED TO THE STRUCTURE WITH 1/4" CORROSION RESISTANT APPROVED CONCRETE SCREWS ANCHORED WITH A MINIMUM EMBEDMENT OF 1 1/2" AT 24" O.C. (6' FROM THE ENDS) ON 3000 PSI CONCRETE AND AT 18" O.C. (4' FROM THE ENDS) ON ASTM CONCRETE BLOCK. A NOMINAL 1 X 3 FT. WOOD SPACER SHALL BE USED BETWEEN THE FRAME AND THE STRUCTURE BUT THE SCREW EMBEDMENT INTO THE CONCRETE OR BLOCK SHALL REMAIN AT 1 1/2" MIN. PROPERLY CAULK 1 X 3 SPACER. SHIMMING SHALL BE KEPT TO A MAXIMUM OF 1/4"

PAINT NOTE:

EXTERIOR MASONRY AND CONCRETE BUILDING SURFACES SHALL RECEIVE ONE COAT OF PRIMER/ SEALER AND TWO FINISH COATS OF EXTERIOR FLAT ACRYLIC LATEX PAINT, AS MANUFACTURED BY BENJAMIN MOORE & COMPANY OR APPROVED EQUAL. COLOR SELECTION BY OWNER.

MOLDING NOTES

1. CONTRACTOR SHALL STUCCO MASONRY WALL (FRONT, TOP & BACK) PRIOR TO INSTALLATION OF PRE-FAB. MOLDINGS.
2. ALL EXTERIOR STYROFOAM MOLDINGS SHALL RECEIVE PAINT OVER STUCCO SKIN COAT.
3. ALL PRE-FAB. STYROFOAM MOLDINGS SHALL BE FABRICATED TO BE A ONE PIECE PROFILE AS PER DETAILS ON SHEET A-6.

REVISIONS:

PROPOSED BALLROOM FOR:
VISTA GARDENS
5011 W. HILLSBORO BLVD
COCONUT CREEK, FL

JOSE SALCEDO

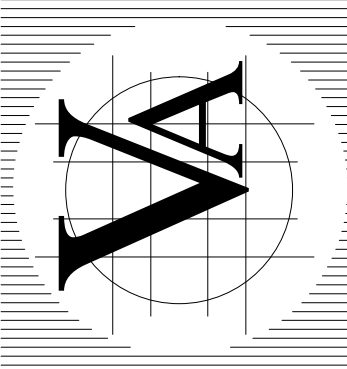
Corporation Licence
#AA0003359

Architectural Seal

JORGE L VILLAVICENCIO
INC. AR0012110

VILLA & ASSOCIATES INC.
ARCHITECTURE PLANNING INTERIOR DESIGN
7344 SW 48 STREET SUITE 201 MIAMI, FLORIDA 33155
TEL. 305-661-8711 - FAX 305-661-8710 - E-Mail Villarchitects@att.net

CONSULTANT: **ARCHI-TEK STUDIO CORP.**
TEL. 305-799-8016 - E-Mail maguilar@architekstudio.com



DATE: 03-14-19 SCALE:

PROJECT NO:

DRAWING NO:
A-4.1